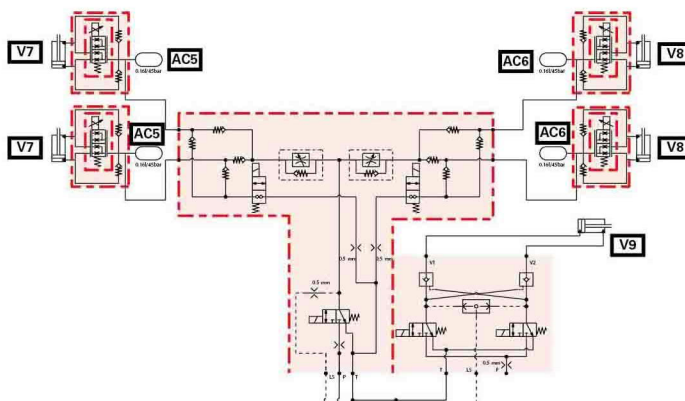
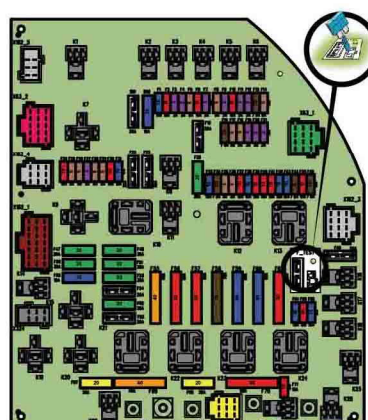


Technician Service Book - series tractors MF 6700 S

Schémas électriques et hydrauliques



Technician Service Book - series tractors MF 6700 S

| | |
|--|------|
| 1 General | 1-1 |
| 1.1 General specifications | 1-3 |
| 1.1.1 tractors MF 6700 SDyna-4 | 1-3 |
| 1.1.2 Tractors MF 6700 SDyna-6 | 1-11 |
| 1.1.3 MF 6700 S Dyna-VT tractors | 1-20 |
| 1.2 Forward speeds | 1-30 |
| 1.2.1 Forward speed with Dyna-4 40 kph transmission and 18.4R38 tires | 1-30 |
| 1.2.2 Forward speed with Dyna-4 40 kph transmission and 20.8R38 tires | 1-30 |
| 1.2.3 Forward speed with Dyna-6 40 kph ECO transmission and 20.8R38 tires | 1-32 |
| 1.2.4 Forward speed with Dyna-6 50 kph transmission and 20.8R38 tires | 1-33 |
| 1.2.5 Forward speed for all models with transmission in Dyna-VT mode | 1-35 |
| 1.3 Dimensions and weights | 1-37 |
| 1.3.1 Dimensions and weights | 1-37 |
| 1.4 Attachment points | 1-41 |
| 1.4.1 Attachment points: MF 6712 S / MF 6713 S / MF 6714 S Dyna-4/Dyna-6 models without front linkage | 1-41 |
| 1.4.2 Attachment points: MF 6712 S / MF 6713 S / MF 6714 S Dyna-4/Dyna-6 models with front linkage | 1-43 |
| 1.4.3 Attachment points: MF 6715 S / MF 6716 S / MF 6718 S Dyna-4/Dyna-6 models without front linkage | 1-45 |
| 1.4.4 Attachment points: MF 6715 S / MF 6716 S / MF 6718 S Dyna-4/Dyna-6 models with front linkage | 1-47 |
| 1.4.5 Attachment points: MF 6713 S / MF 6714 S / MF 6715 S / MF 6716 S / MF 6718 S Dyna-VT models without front linkage: | 1-49 |
| 1.4.6 Attachment points: MF 6713 S / MF 6714 S / MF 6715 S / MF 6716 S / MF 6718 S Dyna-VT models with front linkage | 1-51 |
| 1.5 Capacities | 1-53 |
| 1.5.1 Capacities | 1-53 |
| 1.6 Tightening torques, retaining compounds and sealing products | 1-55 |
| 1.6.1 Retaining compounds and sealing products | 1-55 |
| 1.6.2 Tightening torques for screws and nuts | 1-56 |
| 1.6.3 Tightening torques for hydraulic unions | 1-60 |
| 1.7 Units of measurement | 1-64 |
| 1.7.1 Conversion table | 1-64 |
| 2 Error codes | 2-1 |
| 2.1 Error codes | 2-3 |
| 2.1.1 General table of faults | 2-3 |
| 2.1.2 Indicator light panel | 2-6 |
| 2.1.3 Indication of faults | 2-13 |
| 2.1.4 Description of error code format | 2-16 |
| 2.1.5 Instrument panel error codes Dyna-VT | 2-17 |
| 2.1.6 Instrument panel error codes Dyna-4/Dyna-6 | 2-18 |
| 2.1.7 AGCO Power Tier 3/Stage IIIA engine and Tier 4F/Stage IV SCR Technology engine error codes | 2-19 |
| 2.1.8 Dyna-VT transmission error codes | 2-35 |
| 2.1.9 Transmission error codes Dyna-4/Dyna-6 | 2-38 |
| 2.1.10 Front axle error codes Dyna-VT | 2-40 |
| 2.1.11 Front axle error codes for Dyna-4/Dyna-6 | 2-41 |

| | | |
|----------|---|------------|
| 2.1.12 | Rear power take-off error codes Dyna-VT | 2-41 |
| 2.1.13 | Power take-off error codes Dyna-4/Dyna-6 | 2-43 |
| 2.1.14 | Error codes for the high-pressure braking | 2-44 |
| 2.1.15 | Rear linkage error codes | 2-44 |
| 2.1.16 | Front power lift error codes | 2-46 |
| 2.1.17 | Armrest error codes | 2-46 |
| 2.1.18 | Hydraulic valve error codes | 2-47 |
| 2.1.19 | Air conditioning error codes | 2-49 |
| 2.1.20 | Error codes of the keypad in the pillar | 2-50 |
| 2.1.21 | Suspended cab error codes | 2-51 |
| 3 | Fuse box | 3-1 |
| 3.1 | Fuse box | 3-3 |
| 3.1.1 | Description of the main fuse box | 3-3 |
| 3.1.2 | Description of the secondary fuse box (depending on model) | 3-21 |
| 3.1.3 | Description of additional fuses specific to the panoramic cab | 3-25 |
| 3.1.4 | Battery isolator | 3-27 |
| 4 | Electrical diagrams | 4-1 |
| 4.1 | Electrical diagrams | 4-7 |
| 4.1.1 | Identification of electrical diagrams | 4-7 |
| 4.1.2 | Identification of electrical connectors from X1 to X500 | 4-9 |
| 4.1.3 | Identification of electrical connectors from X501 to X1000 | 4-21 |
| 4.1.4 | Identification table for cable colors | 4-30 |
| 4.1.5 | Electrical diagrams | 4-33 |
| 4.1.5.1 | EFD00000_16 - Battery 12 V power supply points | 4-33 |
| 4.1.5.2 | EFD00000_17 - Battery earth points | 4-34 |
| 4.1.5.3 | EFD00100_17 - 4-wheel drive Dyna-VT | 4-36 |
| 4.1.5.4 | EFD00100_18 - 4-wheel drive Dyna-6 | 4-37 |
| 4.1.5.5 | EFD00100_19 - 4-wheel drive Dyna-4 | 4-37 |
| 4.1.5.6 | EFD00101_17 - Differential lock Dyna-VT | 4-38 |
| 4.1.5.7 | EFD00101_18 - Differential lock Dyna-6 | 4-39 |
| 4.1.5.8 | EFD00101_19 - Differential lock Dyna-4 | 4-40 |
| 4.1.5.9 | EFD00106_28 - rear power take-off Dyna-VT | 4-41 |
| 4.1.5.10 | EFD00106_32 - GPA20 mechanical-control rear power take-off Dyna-6 | 4-42 |
| 4.1.5.11 | EFD00106_33 - GPA20 electrohydraulic-control rear power take-off Dyna-6 | 4-43 |
| 4.1.5.12 | EFD00106_34 - GPA20 mechanical-control rear power take-off Dyna-4 | 4-44 |
| 4.1.5.13 | EFD00106_35 - GPA20 electrohydraulic-control rear power take-off Dyna-4 | 4-45 |
| 4.1.5.14 | EFD00107_11 - front power take-off Dyna-VT | 4-46 |
| 4.1.5.15 | EFD00107_12 - front power take-off Dyna-6 | 4-47 |
| 4.1.5.16 | EFD00107_13 - front power take-off Dyna-4 | 4-48 |
| 4.1.5.17 | EFD00111_31 - transmission Dyna-VT_1/2 | 4-49 |
| 4.1.5.18 | EFD00111_31 - transmission Dyna-VT_2/2 | 4-50 |
| 4.1.5.19 | EFD00111_33 - GTA2520 transmission Dyna-6 Load Sensing_1/4 | 4-51 |
| 4.1.5.20 | EFD00111_33 - GTA2520 transmission Dyna-6 Load Sensing_2/4 | 4-52 |
| 4.1.5.21 | EFD00111_33 - GTA2520 transmission Dyna-6 Load Sensing_3/4 | 4-53 |
| 4.1.5.22 | EFD00111_33 - GTA2520 transmission Dyna-6 Load Sensing_4/4 | 4-54 |
| 4.1.5.23 | EFD00111_34 - GTA2520 Dyna-6 Open Center transmission_1/4 | 4-55 |
| 4.1.5.24 | EFD00111_34 - GTA2520 Dyna-6 Open Center transmission_2/4 | 4-56 |
| 4.1.5.25 | EFD00111_34 - GTA2520 Dyna-6 Open Center transmission_3/4 | 4-57 |
| 4.1.5.26 | EFD00111_34 - GTA2520 Dyna-6 Open Center transmission_4/4 | 4-58 |
| 4.1.5.27 | EFD00111_35 - GTA2520 transmission Dyna-4 Load Sensing_1/2 | 4-59 |
| 4.1.5.28 | EFD00111_35 - GTA2520 transmission Dyna-4 Load Sensing_2/2 | 4-60 |
| 4.1.5.29 | EFD00111_36 - GTA2520 Dyna-4 Open Center transmission_1/2 | 4-61 |
| 4.1.5.30 | EFD00111_36 - GTA2520 Dyna-4 Open Center transmission_2/2 | 4-62 |
| 4.1.5.31 | EFD00113_7 - Cigarette lighter | 4-63 |

<https://www.ebooklibonline.com>

Hello dear friend!

Thank you very much for reading.

Enter the link into your browser.

The full manual is available for immediate download.

<https://www.ebooklibonline.com>

| | | |
|----------|--|-------|
| 4.1.5.32 | EFD00114_30 - Radio | 4-64 |
| 4.1.5.33 | EFD00116_12 - Suspended cab | 4-65 |
| 4.1.5.34 | EFD00117_28 - Additional heater | 4-66 |
| 4.1.5.35 | EFD00117_39 - Automatic air conditioning | 4-67 |
| 4.1.5.36 | EFD00117_40 - Manual air conditioning for standard roof | 4-68 |
| 4.1.5.37 | EFD00117_41 - Manual air conditioning for high-visibility roof | 4-69 |
| 4.1.5.38 | EFD00118_9 - DOT Matrix | 4-70 |
| 4.1.5.39 | EFD00119_10 - Rear windscreen wiper | 4-71 |
| 4.1.5.40 | EFD00119_11 - Rear windscreen wiper for tractors with panoramic cab | 4-72 |
| 4.1.5.41 | EFD00120_12 - Front windscreen wiper | 4-73 |
| 4.1.5.42 | EFD00121_9 - parking brake Dyna-VT | 4-74 |
| 4.1.5.43 | EFD00121_10 - parking brake Dyna-6 | 4-75 |
| 4.1.5.44 | EFD00121_11 - parking brake Dyna-4 | 4-76 |
| 4.1.5.45 | EFD00122_8 - fuel gage Dyna-VT | 4-77 |
| 4.1.5.46 | EFD00122_9 - Dyna-4/ fuel gage Dyna-6 | 4-78 |
| 4.1.5.47 | EFD00123 - C3000 | 4-79 |
| 4.1.5.48 | EFD00123_24 - Datatronic CCD | 4-80 |
| 4.1.5.49 | EFD00123_25 - Isobus | 4-81 |
| 4.1.5.50 | EFD00123_30 - Auto-Guide™ | 4-82 |
| 4.1.5.51 | EFD00125_10 - Cab light | 4-83 |
| 4.1.5.52 | EFD00126_11 - Extreme cold weather heating with automatic air conditioning | 4-84 |
| 4.1.5.53 | EFD00126_12 - Extreme cold weather heating with manual air conditioning for tractors with standard roof | 4-85 |
| 4.1.5.54 | EFD00126_13 - Extreme cold weather heating with manual air conditioning for tractors with high-visibility roof | 4-86 |
| 4.1.5.55 | EFD00127_8 - Left-hand pillar 12 V socket | 4-87 |
| 4.1.5.56 | EFD00128_17 - EAME/ISO cab power socket | 4-88 |
| 4.1.5.57 | EFD00128_18 - NA/SAE cab power socket | 4-89 |
| 4.1.5.58 | EFD00128_20 - EAME/ISO cab power socket_1/2 | 4-90 |
| 4.1.5.59 | EFD00128_20 - EAME/ISO cab power socket_2/2 | 4-91 |
| 4.1.5.60 | EFD00128_21 - NA/SAE cab power socket_1/2 | 4-92 |
| 4.1.5.61 | EFD00128_21 - NA/SAE cab power socket_2/2 | 4-93 |
| 4.1.5.62 | EFD00129_12 - Diagnostics connector_1/2 | 4-94 |
| 4.1.5.63 | EFD00129_12 - Diagnostics connector_2/2 | 4-95 |
| 4.1.5.64 | EFD00129_13 - Diagnostics connector_1/2 with cab harnesses ACW039162 and ACW039167 | 4-97 |
| 4.1.5.65 | EFD00129_13 - Diagnostics connector_2/2 with cab harnesses ACW039162 and ACW039167 | 4-97 |
| 4.1.5.66 | EFD00130_5 - radar Dyna-VT | 4-99 |
| 4.1.5.67 | EFD00130_6 - Dyna-6 and radar Dyna-4 | 4-99 |
| 4.1.5.68 | EFD00131_34 - CAN network Dyna-VT (tractor)_1/5 with Tier 4F/Stage IV SCR Technology engine and cab harness 4990243 | 4-100 |
| 4.1.5.69 | EFD00131_34 - CAN network Dyna-VT (hitch)_2/5 with Tier 4F/Stage IV SCR Technology engine and cab harness 4990243 | 4-101 |
| 4.1.5.70 | EFD00131_34 - CAN network Dyna-VT (engine)_3/5 with Tier 4F/Stage IV SCR Technology engine and cab harness 4990243 | 4-102 |
| 4.1.5.71 | EFD00131_34 - CAN network Dyna-VT (isobus)_4/5 with Tier 4F/Stage IV SCR Technology engine and cab harness 4990243 | 4-103 |
| 4.1.5.72 | EFD00131_34 - CAN network Dyna-VT (AGCO Power)_5/5 with Tier 4F/Stage IV SCR Technology engine and cab harness 4990243 | 4-104 |
| 4.1.5.73 | EFD00131_35 - CAN network Dyna-6 (tractor)_1/7 with Tier 4F/Stage IV SCR Technology engine and cab harnesses ACW005780-ACW005784-4392642 | 4-105 |
| 4.1.5.74 | EFD00131_35 - CAN network Dyna-6 (engine)_2/7 with Tier 4F/Stage IV SCR Technology engine and cab harnesses ACW005780-ACW005784-4392642 | 4-106 |
| 4.1.5.75 | EFD00131_35 - CAN network Dyna-6 (hitch)_3/7 with Tier 4F/Stage IV SCR Technology engine and cab harnesses ACW005780-ACW005784-4392642 | 4-107 |

| | |
|--|-------|
| 4.1.5.76 EFD00131_35 - CAN network Dyna-6 (isobus)_4/7 with Tier 4F/Stage IV SCR Technology engine and cab harnesses ACW005780-ACW005784-4392642 | 4-108 |
| 4.1.5.77 EFD00131_35 - CAN network Dyna-6 (tractor)_5/7 with Tier 4F/Stage IV SCR Technology engine and cab harnesses ACW005780-ACW005784-4392642 | 4-109 |
| 4.1.5.78 EFD00131_35 - CAN network Dyna-6 (engine)_6/7 with Tier 4F/Stage IV SCR Technology engine and cab harnesses ACW005780-ACW005784-4392642 | 4-110 |
| 4.1.5.79 EFD00131_35 - CAN network Dyna-6 (AGCO Power)_7/7 with Tier 4F/Stage IV SCR Technology engine and cab harnesses ACW005780-ACW005784-4392642 | 4-111 |
| 4.1.5.80 EFD00131_36 - CAN network Dyna-4 (tractor)_1/3 with Tier 4F/Stage IV SCR Technology engine and cab harnesses ACW017847-ACW022303-ACW021492-4391826 | 4-112 |
| 4.1.5.81 EFD00131_36 - CAN network Dyna-4 (engine)_2/3 with Tier 4F/Stage IV SCR Technology engine and cab harnesses ACW017847-ACW022303-ACW021492-4391826 | 4-113 |
| 4.1.5.82 EFD00131_36 - CAN network Dyna-4 AGCO Power_3/3 with Tier 4F/Stage IV SCR Technology engine and cab harnesses ACW017847-ACW022303-ACW021492-4391826 | 4-114 |
| 4.1.5.83 EFD00131_39 - CAN network Dyna-6 (tractor)_1/7 with Tier 4F/Stage IV SCR Technology engine and cab harness ACW039167 | 4-115 |
| 4.1.5.84 EFD00131_39 - CAN network Dyna-6 (engine)_2/7 with Tier 4F/Stage IV SCR Technology engine and cab harness ACW039167 | 4-116 |
| 4.1.5.85 EFD00131_39 - CAN network Dyna-6 (hitch)_3/7 with Tier 4F/Stage IV SCR Technology engine and cab harness ACW039167 | 4-117 |
| 4.1.5.86 EFD00131_39 - CAN network Dyna-6 (isobus)_4/7 with Tier 4F/Stage IV SCR Technology engine and cab harness ACW039167 | 4-118 |
| 4.1.5.87 EFD00131_39 - CAN network Dyna-6 (tractor)_5/7 with Tier 4F/Stage IV SCR Technology engine and cab harness ACW039167 | 4-119 |
| 4.1.5.88 EFD00131_39 - CAN network Dyna-6 (engine)_6/7 with Tier 4F/Stage IV SCR Technology engine and cab harness ACW039167 | 4-120 |
| 4.1.5.89 EFD00131_39 - CAN network Dyna-6 AGCO Power_7/7 with Tier 4F/Stage IV SCR Technology engine and cab harness ACW039167 | 4-121 |
| 4.1.5.90 EFD00131_40 - CAN network Dyna-VT (tractor)_1/5 with Tier 4F/Stage IV SCR Technology engine and cab harness ACW039162 | 4-122 |
| 4.1.5.91 EFD00131_40 - CAN network Dyna-VT (hitch)_2/5 with Tier 4F/Stage IV SCR Technology engine and cab harness ACW039162 | 4-123 |
| 4.1.5.92 EFD00131_40 - CAN network Dyna-VT (engine)_3/5 with Tier 4F/Stage IV SCR Technology engine and cab harness ACW039162 | 4-124 |
| 4.1.5.93 EFD00131_40 - CAN network Dyna-VT (isobus)_4/5 with Tier 4F/Stage IV SCR Technology engine and cab harness ACW039162 | 4-125 |
| 4.1.5.94 EFD00131_40 - CAN network Dyna-VT AGCO Power_5/5 with Tier 4F/Stage IV SCR Technology engine and cab harness ACW039162 | 4-126 |
| 4.1.5.95 EFD00132_7 - Electric rear-view mirrors | 4-127 |
| 4.1.5.96 EFD00133_7 - Pneumatic seat | 4-128 |
| 4.1.5.97 EFD00135_11 - Ventilation for tractors with standard roof | 4-129 |
| 4.1.5.98 EFD00135_12 - Ventilation for tractors with high-visibility roof | 4-130 |
| 4.1.5.99 EFD00136_59 - EAME direction indicators and hazard warning lights - standard roof | 4-131 |
| 4.1.5.100 EFD00136_60 - NA direction indicators and hazard warning lights | 4-132 |
| 4.1.5.101 EFD00136_61 - EAME direction indicators and hazard warning lights - high-visibility roof | 4-133 |
| 4.1.5.102 EFD00137_23 - Number plate lighting (except Italy) | 4-134 |
| 4.1.5.103 EFD00137_24 - Italian number plate lighting | 4-135 |
| 4.1.5.104 EFD00138_35 - NA side lights | 4-136 |
| 4.1.5.105 EFD00138_42 - EAME side lights | 4-137 |
| 4.1.5.106 EFD00139_8 - Reversing light Dyna-VT | 4-138 |
| 4.1.5.107 EFD00139_9 - Reversing light Dyna-6 | 4-139 |
| 4.1.5.108 EFD00139_12 - Reversing light Dyna-4 | 4-140 |

| | | |
|-----------|---|-------|
| 4.1.5.109 | EFD00140_48 - High beam lamps and low beam lamps on grille and hand rails | 4-141 |
| 4.1.5.110 | EFD00140_49 - High beam lamps and low beam lamps on hand rails | 4-142 |
| 4.1.5.111 | EFD00140_50 - High beam lamps and low beam lamps on grille | 4-143 |
| 4.1.5.112 | EFD00140_51 - High beam lamps and low beam lamps on grille | 4-144 |
| 4.1.5.113 | EFD00141_77 - Work lights for tractors with panoramic cab | 4-145 |
| 4.1.5.114 | EFD00141_78 - Work lights + high beam lamps on hand rails for tractors with panoramic cab | 4-146 |
| 4.1.5.115 | EFD00141_95 - EAME work lights | 4-147 |
| 4.1.5.116 | EFD00141_96 - NA work lights | 4-148 |
| 4.1.5.117 | EFD00141_97 - Work lights | 4-149 |
| 4.1.5.118 | EFD00142_12 - Brake lights Dyna-VT | 4-150 |
| 4.1.5.119 | EFD00142_13 - Brake lights Dyna-6 | 4-151 |
| 4.1.5.120 | EFD00142_14 - Brake lights Dyna-4 | 4-152 |
| 4.1.5.121 | EFD00143_27 - Rotary beacon | 4-153 |
| 4.1.5.122 | EFD00144_8 - Control module | 4-154 |
| 4.1.5.123 | EFD00145_13 - NA trailer connector | 4-155 |
| 4.1.5.124 | EFD00145_14 - EAME trailer connector | 4-156 |
| 4.1.5.125 | EFD00146_9 - Automatic air conditioning back-lighting | 4-157 |
| 4.1.5.126 | EFD00146_10 - Manual air conditioning back-lighting | 4-158 |
| 4.1.5.127 | EFD00148_13 - Audible alarm | 4-159 |
| 4.1.5.128 | EFD00149_16 - Battery charge + start-up Tier 4F/Stage IV SCR Technology engine | 4-160 |
| 4.1.5.129 | EFD00150_10 - Air filter vacuum sensor | 4-161 |
| 4.1.5.130 | EFD00151_33 - EEM unit power supply AGCO Power (49 AWF engine) | 4-162 |
| 4.1.5.131 | EFD00151_34 - AGCO Power engine electronic injection for Efficient and tractor versions Exclusive (49 AWF engine) | 4-163 |
| 4.1.5.132 | EFD00151_35 - AGCO Power engine electronic injection for tractor versions Essential (49 AWF engine) | 4-164 |
| 4.1.5.133 | EFD00152_19 - Suspended front axle (for MF 6700 S models) | 4-165 |
| 4.1.5.134 | EFD00153_20 - Preheating power supply AGCO Power (66/74 CW-3 and 49AWF engine) | 4-166 |
| 4.1.5.135 | EFD00154_6 - Fuel preheater | 4-167 |
| 4.1.5.136 | EFD00157_6 - Vistronic Tier 4F/Stage IV SCR Technology engine | 4-168 |
| 4.1.5.137 | EFD00159_18 - Hydraulic spool valves Dyna-VT | 4-169 |
| 4.1.5.138 | EFD00159_19 - Hydraulic spool valves Dyna-6 | 4-170 |
| 4.1.5.139 | EFD00160_29 - Rear linkage and Dual Control Dyna-VT | 4-171 |
| 4.1.5.140 | EFD00160_30 - GPA20 and GPA40 Dual Control and rear linkage Dyna-6_1/2 | 4-172 |
| 4.1.5.141 | EFD00160_30 - GPA20 and GPA40 Dual Control and rear linkage Dyna-6_2/2 | 4-173 |
| 4.1.5.142 | EFD00160_31 - Dyna-6 Open Center GPA20 Dual Control and rear linkage | 4-174 |
| 4.1.5.143 | EFD00160_32 - Dyna-4 Load Sensing GPA20 Dual Control and rear linkage | 4-175 |
| 4.1.5.144 | EFD00160_33 - Dyna-4 Open Center GPA20 Dual Control and rear linkage | 4-176 |
| 4.1.5.145 | EFD00161_13 - Front linkage | 4-177 |
| 4.1.5.146 | EFD00162_11 - Dual Control linkage and trailed implements (TIC) Dyna-VT | 4-178 |
| 4.1.5.147 | EFD00162_12 - Dual Control linkage and trailed implements (TIC) Dyna-6 | 4-179 |
| 4.1.5.148 | EFD00166_2 - Side windscreen wiper for tractors with panoramic cab | 4-180 |
| 4.1.5.149 | EFD00167_2 - Triflash for tractors with panoramic cab | 4-181 |
| 4.1.5.150 | EFD00168_2 - Rear fog light for tractors with panoramic cab | 4-182 |
| 4.1.5.151 | EFD00169_18 - Controller power supply Dyna-VT_1/5 | 4-183 |
| 4.1.5.152 | EFD00169_18 - Controller power supply Dyna-VT_2/5 | 4-184 |

| | | |
|-----------|---|-------|
| 4.1.5.153 | EFD00169_18 - Controller power supply Dyna-VT_3/5 | 4-185 |
| 4.1.5.154 | EFD00169_18 - Controller power supply Dyna-VT_4/5 | 4-186 |
| 4.1.5.155 | EFD00169_18 - Controller power supply Dyna-VT_5/5 | 4-187 |
| 4.1.5.156 | EFD00169_19 - Controller power supply Dyna-6 - Transmission | 4-188 |
| 4.1.5.157 | EFD00169_19 - Controller power supply Dyna-6 - linkage | 4-189 |
| 4.1.5.158 | EFD00169_19 - Controller power supply Dyna-6 - suspended front axle (TECU) | 4-190 |
| 4.1.5.159 | EFD00169_19 - Controller power supply Dyna-6 - Instrument panel | 4-191 |
| 4.1.5.160 | EFD00169_19 - Controller power supply Dyna-6 - Suspended cab | 4-192 |
| 4.1.5.161 | EFD00169_20 - Controller power supply Dyna-4_1/4 | 4-193 |
| 4.1.5.162 | EFD00169_20 - Controller power supply Dyna-4_2/4 | 4-194 |
| 4.1.5.163 | EFD00169_20 - Controller power supply Dyna-4_3/4 | 4-195 |
| 4.1.5.164 | EFD00169_20 - Controller power supply Dyna-4_4/4 | 4-196 |
| 4.1.5.165 | EFD00170_3 - High-pressure braking | 4-197 |
| 4.1.5.166 | EFD00172_6 - Front accessory connection socket_1/2 | 4-198 |
| 4.1.5.167 | EFD00172_6 - Front accessory connection socket_2/2 | 4-199 |
| 4.1.5.168 | EFD00173_7 - Water in fuel sensor of the Tier 4f/Stage IV SCR Technology engine | 4-200 |
| 4.1.5.169 | EFD00174_12 - air brake Dyna-VT_1/2 | 4-201 |
| 4.1.5.170 | EFD00174_12 - air brake Dyna-VT_2/2 | 4-202 |
| 4.1.5.171 | EFD00174_14 - GPA20 and GPA50 air brake Dyna-6 | 4-203 |
| 4.1.5.172 | EFD00174_15 - GPA20 and GPA50 air brake Dyna-4 | 4-204 |
| 4.1.5.173 | EFD00175 - Tier4f/Stage IV AGCO Power engine_1/3 | 4-205 |
| 4.1.5.174 | EFD00175 - Tier4f/Stage IV AGCO Power engine_2/3 | 4-206 |
| 4.1.5.175 | EFD00175 - Tier4f/Stage IV AGCO Power engine_3/3 | 4-207 |
| 4.1.5.176 | EFD00175_9 - SCR Technology | 4-208 |
| 4.1.5.177 | EFD00176 - LoaderALO | 4-209 |
| 4.1.5.178 | EFD00176_14 - front set Dyna-6 | 4-210 |
| 4.1.5.179 | EFD00176_15 - ALO loader Dyna-6 | 4-211 |
| 4.1.5.180 | EFD00176_16 - front set Dyna-VT | 4-212 |
| 4.1.5.181 | EFD00176_17 - ALO mechanical loader Dyna-4 | 4-213 |
| 4.1.5.182 | EFD00178_5 - Steering SpeedSteer | 4-214 |
| 4.1.5.183 | EFD00183_2 - Implement attachment without Isobus | 4-215 |
| 4.1.5.184 | EFD00184_3 - AgCommand™ | 4-216 |

5 Harnesses 5-1

5.1 Harnesses 5-5

5.1.1 Identification of harnesses 5-5

5.1.2 Identification table for cable colors 5-8

5.1.3 Harnesses 5-11

5.1.3.1 FAI200 - Engine harness cab - ACW0349940_1/2 5-11

5.1.3.2 FAI200 - Engine harness cab - ACW0349940_2/2 5-12

5.1.3.3 FAI200 - Engine harness - ACW061250_1/4 5-13

5.1.3.4 FAI200 - Engine harness - ACW061250_2/4 5-14

5.1.3.5 FAI200 - Engine harness - ACW061250_3/4 5-15

5.1.3.6 FAI200 - Engine harness - ACW061250_4/4 5-16

5.1.3.7 FAI201 - Front headlights harness - 4388041_1/2 5-17

5.1.3.8 FAI201 - Front headlights harness - 4388041_2/2 5-18

5.1.3.9 FAI202 - Suspended front axle harness - ACW033127_1/2 5-19

5.1.3.10 FAI202 - Suspended front axle harness - ACW033127_2/2 5-20

5.1.3.11 FAI203 - Transmission harness Dyna-VT - 4389481_1/3 5-21

5.1.3.12 FAI203 - Transmission harness Dyna-VT - 4389481_2/3 5-22

5.1.3.13 FAI203 - Transmission harness Dyna-VT - 4389481_3/3 5-23

5.1.3.14 FAI203 - Transmission harness Dyna-4/Dyna-6 GTA2520 - ACW104556_1/3 5-24

5.1.3.15 FAI203 - Transmission harness Dyna-4/Dyna-6 GTA2520 - ACW104556_2/3 5-25

| | | |
|----------|---|------|
| 5.1.3.16 | FAI203 - Transmission harness Dyna-4/Dyna-6 GTA2520 - ACW104556_3/3 | 5-26 |
| 5.1.3.17 | FAI205 - Electrohydraulic valves harness - 4292090 | 5-27 |
| 5.1.3.18 | FAI205 - Electrohydraulic valves harness - 4292091 | 5-28 |
| 5.1.3.19 | FAI205 - Electrohydraulic valves harness - 4292093 | 5-29 |
| 5.1.3.20 | FAI205 - Electrohydraulic valves harness - 4387694 | 5-30 |
| 5.1.3.21 | FAI208 - Linkage with Dual Control and TIC harness - 4387797_1/2 | 5-31 |
| 5.1.3.22 | FAI208 - Linkage with Dual Control and TIC harness - 4387797_2/2 | 5-32 |
| 5.1.3.23 | FAI210 - Cab transmission harness Dyna-4 municipal - 4391826_1/8 | 5-33 |
| 5.1.3.24 | FAI210 - Cab transmission harness Dyna-4 municipal - 4391826_2/8 | 5-34 |
| 5.1.3.25 | FAI210 - Cab transmission harness Dyna-4 municipal - 4391826_3/8 | 5-35 |
| 5.1.3.26 | FAI210 - Cab transmission harness Dyna-4 municipal - 4391826_4/8 | 5-36 |
| 5.1.3.27 | FAI210 - Cab transmission harness Dyna-4 municipal - 4391826_5/8 | 5-37 |
| 5.1.3.28 | FAI210 - Cab transmission harness Dyna-4 municipal - 4391826_6/8 | 5-38 |
| 5.1.3.29 | FAI210 - Cab transmission harness Dyna-4 municipal - 4391826_7/8 | 5-39 |
| 5.1.3.30 | FAI210 - Cab transmission harness Dyna-4 municipal - 4391826_8/8 | 5-40 |
| 5.1.3.31 | FAI210 - Cab transmission harness Dyna-6 municipal - 4392642_1/9 | 5-41 |
| 5.1.3.32 | FAI210 - Cab transmission harness Dyna-6 municipal - 4392642_2/9 | 5-42 |
| 5.1.3.33 | FAI210 - Cab transmission harness Dyna-6 municipal - 4392642_3/9 | 5-43 |
| 5.1.3.34 | FAI210 - Cab transmission harness Dyna-6 municipal - 4392642_4/9 | 5-44 |
| 5.1.3.35 | FAI210 - Cab transmission harness Dyna-6 municipal - 4392642_5/9 | 5-45 |
| 5.1.3.36 | FAI210 - Cab transmission harness Dyna-6 municipal - 4392642_6/9 | 5-46 |
| 5.1.3.37 | FAI210 - Cab transmission harness Dyna-6 municipal - 4392642_7/9 | 5-47 |
| 5.1.3.38 | FAI210 - Cab transmission harness Dyna-6 municipal - 4392642_8/9 | 5-48 |
| 5.1.3.39 | FAI210 - Cab transmission harness Dyna-6 municipal - 4392642_9/9 | 5-49 |
| 5.1.3.40 | FAI210 - Cab transmission harness Dyna-6 long console - ACW005784_1/8 | 5-50 |
| 5.1.3.41 | FAI210 - Cab transmission harness Dyna-6 long console - ACW005784_2/8 | 5-51 |
| 5.1.3.42 | FAI210 - Cab transmission harness Dyna-6 long console - ACW005784_3/8 | 5-52 |
| 5.1.3.43 | FAI210 - Cab transmission harness Dyna-6 long console - ACW005784_4/8 | 5-53 |
| 5.1.3.44 | FAI210 - Cab transmission harness Dyna-6 long console - ACW005784_5/8 | 5-54 |
| 5.1.3.45 | FAI210 - Cab transmission harness Dyna-6 long console - ACW005784_6/8 | 5-55 |
| 5.1.3.46 | FAI210 - Cab transmission harness Dyna-6 long console - ACW005784_7/8 | 5-56 |
| 5.1.3.47 | FAI210 - Cab transmission harness Dyna-6 long console - ACW005784_8/8 | 5-57 |
| 5.1.3.48 | FAI210 - Cab transmission harness Dyna-4 long console - ACW017847_1/7 | 5-58 |
| 5.1.3.49 | FAI210 - Cab transmission harness Dyna-4 long console - ACW017847_2/7 | 5-59 |
| 5.1.3.50 | FAI210 - Cab transmission harness Dyna-4 long console - ACW017847_3/7 | 5-60 |
| 5.1.3.51 | FAI210 - Cab transmission harness Dyna-4 long console - ACW017847_4/7 | 5-61 |
| 5.1.3.52 | FAI210 - Cab transmission harness Dyna-4 long console - ACW017847_5/7 | 5-62 |
| 5.1.3.53 | FAI210 - Cab transmission harness Dyna-4 long console - ACW017847_6/7 | 5-63 |
| 5.1.3.54 | FAI210 - Cab transmission harness Dyna-4 long console - ACW017847_7/7 | 5-64 |
| 5.1.3.55 | FAI210 - Cab transmission harness Dyna-VT short console - ACW039162_1/9 | 5-65 |

| | | |
|----------|---|-------|
| 5.1.3.56 | FAI210 - Cab transmission harness Dyna-VT short console - ACW039162_2/9 | 5-66 |
| 5.1.3.57 | FAI210 - Cab transmission harness Dyna-VT short console - ACW039162_3/9 | 5-67 |
| 5.1.3.58 | FAI210 - Cab transmission harness Dyna-VT short console - ACW039162_4/9 | 5-68 |
| 5.1.3.59 | FAI210 - Cab transmission harness Dyna-VT short console - ACW039162_5/9 | 5-69 |
| 5.1.3.60 | FAI210 - Cab transmission harness Dyna-VT short console - ACW039162_6/9 | 5-70 |
| 5.1.3.61 | FAI210 - Cab transmission harness Dyna-VT short console - ACW039162_7/9 | 5-71 |
| 5.1.3.62 | FAI210 - Cab transmission harness Dyna-VT short console - ACW039162_8/9 | 5-72 |
| 5.1.3.63 | FAI210 - Cab transmission harness Dyna-VT short console - ACW039162_9/9 | 5-73 |
| 5.1.3.64 | FAI210 - Cab transmission harness Dyna-6 short console - ACW039167_1/9 | 5-74 |
| 5.1.3.65 | FAI210 - Cab transmission harness Dyna-6 short console - ACW039167_2/9 | 5-75 |
| 5.1.3.66 | FAI210 - Cab transmission harness Dyna-6 short console - ACW039167_3/9 | 5-76 |
| 5.1.3.67 | FAI210 - Cab transmission harness Dyna-6 short console - ACW039167_4/9 | 5-77 |
| 5.1.3.68 | FAI210 - Cab transmission harness Dyna-6 short console - ACW039167_5/9 | 5-78 |
| 5.1.3.69 | FAI210 - Cab transmission harness Dyna-6 short console - ACW039167_6/9 | 5-79 |
| 5.1.3.70 | FAI210 - Cab transmission harness Dyna-6 short console - ACW039167_7/9 | 5-80 |
| 5.1.3.71 | FAI210 - Cab transmission harness Dyna-6 short console - ACW039167_8/9 | 5-81 |
| 5.1.3.72 | FAI210 - Cab transmission harness Dyna-6 short console - ACW039167_9/9 | 5-82 |
| 5.1.3.73 | FAI212 - Lighting harness Municipal cab - 4380685_1/3 | 5-83 |
| 5.1.3.74 | FAI212 - Lighting harness Municipal cab - 4380685_2/3 | 5-84 |
| 5.1.3.75 | FAI212 - Lighting harness Municipal cab - 4380685_3/3 | 5-85 |
| 5.1.3.76 | FAI212 - Lighting harness EAME - 4389032_1/3 | 5-86 |
| 5.1.3.77 | FAI212 - Lighting harness EAME - 4389032_2/3 | 5-87 |
| 5.1.3.78 | FAI212 - Lighting harness EAME - 4389032_3/3 | 5-88 |
| 5.1.3.79 | FAI212 - Lighting harness NA - 4389034_1/3 | 5-89 |
| 5.1.3.80 | FAI212 - Lighting harness NA - 4389034_2/3 | 5-90 |
| 5.1.3.81 | FAI212 - Lighting harness NA - 4389034_3/3 | 5-91 |
| 5.1.3.82 | FAI219 - Cab interior power socket harness - 4290574_1/2 | 5-92 |
| 5.1.3.83 | FAI219 - Cab interior power socket harness - 4290574_2/2 | 5-93 |
| 5.1.3.84 | FAI219 - Cab interior power socket harness - 4290575_1/2 | 5-94 |
| 5.1.3.85 | FAI219 - Cab interior power socket harness - 4290575_2/2 | 5-95 |
| 5.1.3.86 | FAI223 - Roof harness standard with manual air conditioning - 4353057_1/3 | 5-96 |
| 5.1.3.87 | FAI223 - Roof harness standard with manual air conditioning - 4353057_2/3 | 5-97 |
| 5.1.3.88 | FAI223 - Roof harness standard with manual air conditioning - 4353057_3/3 | 5-98 |
| 5.1.3.89 | FAI223 - Roof harness_High visibility - 4375395_1/3 | 5-99 |
| 5.1.3.90 | FAI223 - Roof harness_High visibility_4375395_2/3 | 5-100 |
| 5.1.3.91 | FAI223 - Roof harness_High visibility_4375395_3/3 | 5-101 |
| 5.1.3.92 | FAI223 - Roof harness_standard_municipal_cab_ACW001936_1/3 | 5-102 |
| 5.1.3.93 | FAI223 - Roof harness_standard_municipal_cab_ACW001936_2/3 | 5-103 |

| | | |
|-----------|---|-------|
| 5.1.3.94 | FAI223 - Roof harness_standard_municipal_cab_ACW001936_3/3 . . . | 5-104 |
| 5.1.3.95 | FAI224 - Hand rail lighting harness - 4390262_1/2 | 5-105 |
| 5.1.3.96 | FAI224 - Hand rail lighting harness - 4390262_2/2 | 5-106 |
| 5.1.3.97 | FAI225 - Electric rear-view mirror harness - 4352622_1/2 | 5-107 |
| 5.1.3.98 | FAI225 - Electric rear-view mirror harness - 4352622_2/2 | 5-108 |
| 5.1.3.99 | FAI227 - Roof harness with automatic air conditioning - 4352621_1/3 . | 5-109 |
| 5.1.3.100 | FAI227 - Roof harness with automatic air conditioning - 4352621_2/3 | 5-110 |
| 5.1.3.101 | FAI227 - Roof harness with automatic air conditioning - 4352621_3/3 | 5-111 |
| 5.1.3.102 | FAI228 - Number plate lighting harness - 4353107_1/2 | 5-112 |
| 5.1.3.103 | FAI228 - Number plate lighting harness - 4353107_2/2 | 5-113 |
| 5.1.3.104 | FAI228 - Number plate lighting harness - 4357222_1/2 | 5-114 |
| 5.1.3.105 | FAI228 - Number plate lighting harness - 4357222_2/2 | 5-115 |
| 5.1.3.106 | FAI245 - Left-hand linkage external controls harness - 4348463_1/2 . | 5-116 |
| 5.1.3.107 | FAI245 - Left-hand linkage external controls harness - 4348463_2/2 . | 5-117 |
| 5.1.3.108 | FAI253 - Hand rail harness - 4390260_1/2 | 5-118 |
| 5.1.3.109 | FAI253 - Hand rail harness - 4390260_2/2 | 5-119 |
| 5.1.3.110 | FAI261 - Isobus harness - 4353130_1/2 | 5-120 |
| 5.1.3.111 | FAI261 - Isobus harness - 4353130_2/2 | 5-121 |
| 5.1.3.112 | FAI261 - Isobus harness - 4353133 | 5-122 |
| 5.1.3.113 | FAI262 - Auto-Guide™ engine harness - 4296810_1/2 | 5-123 |
| 5.1.3.114 | FAI262 - Auto-Guide™ engine harness - 4296810_2/2 | 5-124 |
| 5.1.3.115 | FAI263 - Auto-Guide™ cab adapter harness - 4353936_1/2 | 5-125 |
| 5.1.3.116 | FAI263 - Auto-Guide™ cab adapter harness - 4353936_2/2 | 5-126 |
| 5.1.3.117 | FAI265 - Pneumatic braking harness Dyna-6- ACW034317_1/2 | 5-127 |
| 5.1.3.118 | FAI265 - Pneumatic braking harness Dyna-6- ACW034317_2/2 | 5-128 |
| 5.1.3.119 | FAI265 - Pneumatic braking harness Dyna-VT - ACW016912_1/2 . . . | 5-129 |
| 5.1.3.120 | FAI265 - Pneumatic braking harness Dyna-VT - ACW016912_2/2 . . . | 5-130 |
| 5.1.3.121 | FAI272 - Suspended cab harness Dyna-6 - ACW039185_1/2 | 5-131 |
| 5.1.3.122 | FAI272 - Suspended cab harness Dyna-6 - ACW039185_2/2 | 5-132 |
| 5.1.3.123 | FAI272 - Suspended cab harness Dyna-VT - ACW060395_1/2 | 5-133 |
| 5.1.3.124 | FAI272 - Suspended cab harness Dyna-VT - ACW060395_2/2 | 5-134 |
| 5.1.3.125 | FAI273 - Front linkage harness with power socket - 4353047_1/2 . . . | 5-135 |
| 5.1.3.126 | FAI273 - Front linkage harness with power socket - 4353047_2/2 . . . | 5-136 |
| 5.1.3.127 | FAI273 - Front linkage harness without power socket - 4353048_1/2 | 5-137 |
| 5.1.3.128 | FAI273 - Front linkage harness without power socket - 4353048_2/2 | 5-138 |
| 5.1.3.129 | FAI283 - TopDock harness - 4377536_1/2 | 5-139 |
| 5.1.3.130 | FAI283 - TopDock harness - 4377536_2/2 | 5-140 |
| 5.1.3.131 | FAI287 - ALO loader harness external without multi-function armrest - | |
| | 4378794_1/2 | 5-141 |
| 5.1.3.132 | FAI287 - ALO loader harness external without multi-function armrest - | |
| | 4378794_2/2 | 5-142 |
| 5.1.3.133 | FAI287 - ALO loader harness internal without multi-function armrest - | |
| | 4378879_1/2 | 5-143 |
| 5.1.3.134 | FAI287 - ALO loader harness internal without multi-function armrest - | |
| | 4378879_2/2 | 5-144 |
| 5.1.3.135 | FAI290 - Non-Isobus implement connector harness - 4296266_1/2 . . | 5-145 |
| 5.1.3.136 | FAI290 - Non-Isobus implement connector harness - 4296266_2/2 . . | 5-146 |
| 5.1.3.137 | FAI292 - NA indicator harness - 4350987 | 5-147 |
| 5.1.3.138 | FAI292 - NA indicator harness - 4355519_1/2 | 5-148 |
| 5.1.3.139 | FAI292 - NA indicator harness - 4355519_2/2 | 5-149 |
| 5.1.3.140 | FAI293 - EAME indicator harness - 4350988 | 5-150 |
| 5.1.3.141 | FAI293 - EAME indicator harness - 4355520_1/2 | 5-151 |
| 5.1.3.142 | FAI293 - EAME indicator harness - 4355520_2/2 | 5-152 |
| 5.1.3.143 | FAI294 - Additional heater harness - 4299327_1/2 | 5-153 |
| 5.1.3.144 | FAI294 - Additional heater harness - 4299327_2/2 | 5-154 |
| 5.1.3.145 | FAI299 - Battery isolator harness - ACW028832_1/2 | 5-155 |
| 5.1.3.146 | FAI299 - Battery isolator harness - ACW028832_2/2 | 5-156 |
| 5.1.3.147 | FAI300 - Air conditioning shunt harness - 4353106 | 5-157 |

| | | |
|-----------|--|------------|
| 5.1.3.148 | FAI305 - Engine exhaust harness - 4348876 | 5-158 |
| 5.1.3.149 | FAI307 - Datatronic 4 harness - 4353638_1/2 | 5-159 |
| 5.1.3.150 | FAI307 - Datatronic 4 harness - 4353638_2/2 | 5-160 |
| 5.1.3.151 | FAI307 - Datatronic 4 harness - 4390934_1/2 | 5-161 |
| 5.1.3.152 | FAI307 - Datatronic 4 harness - 4390934_2/2 | 5-162 |
| 5.1.3.153 | FAI310 - Battery/battery isolator negative cable harness - 4389477 | 5-163 |
| 5.1.3.154 | FAI311 - Battery/starter positive cable harness - ACW024867 | 5-164 |
| 5.1.3.155 | FAI312 - Cab/starter negative cable harness - ACW024869 | 5-165 |
| 5.1.3.156 | FAI313 - Cab/battery isolator negative cable harness - 4389475 | 5-166 |
| 5.1.3.157 | FAI314 - Alternator harness - ACW032934_1/2 | 5-167 |
| 5.1.3.158 | FAI314 - Alternator harness - ACW032934_2/2 | 5-168 |
| 5.1.3.159 | FAI317 - Vistronic harness - 4392053_1/2 | 5-169 |
| 5.1.3.160 | FAI317 - Vistronic harness - 4392053_2/2 | 5-170 |
| 5.1.3.161 | FAI321 - GSPTO harness - ACW008066_1/2 | 5-171 |
| 5.1.3.162 | FAI321 - GSPTO harness - ACW008066_2/2 | 5-172 |
| 5.1.3.163 | FAI323 - Hydraulic safety harness Load Sensing - 4355616_1/2 | 5-173 |
| 5.1.3.164 | FAI323 - Hydraulic safety harness Load Sensing - 4355616_2/2 | 5-174 |
| 5.1.3.165 | FAI324 - Open Center hydraulic safety harness - 4355617_1/2 | 5-175 |
| 5.1.3.166 | FAI324 - Open Center hydraulic safety harness - 4355617_2/2 | 5-176 |
| 5.1.3.167 | FAI325 - Power take-off electric selector harness - 4377601_1/2 | 5-177 |
| 5.1.3.168 | FAI325 - Power take-off electric selector harness - 4377601_2/2 | 5-178 |
| 5.1.3.169 | FAI327 - GPA 20 to GPA 20+ adapter harness - 4377849_1/2 | 5-179 |
| 5.1.3.170 | FAI327 - GPA 20 to GPA 20+ adapter harness - 4377849_2/2 | 5-180 |
| 5.1.3.171 | FAI340 - Battery/fuse box positive cable harness - ACW029172 | 5-181 |
| 5.1.3.172 | FAI354 - External loader harness - 4374651_1/2 | 5-182 |
| 5.1.3.173 | FAI354 - External loader harness - 4374651_2/2 | 5-183 |
| 5.1.3.174 | FAI355 - Harness for the left-hand alternator and for the grid heater - ACW032931_1/2 | 5-184 |
| 5.1.3.175 | FAI355 - Harness for the left-hand alternator and for the grid heater - ACW032931_2/2 | 5-185 |
| 5.1.3.176 | FAI355 - Harness for the left-hand alternator and for the grid heater - ACW032959_1/2 | 5-186 |
| 5.1.3.177 | FAI355 - Harness for the left-hand alternator and for the grid heater - ACW032959_2/2 | 5-187 |
| 5.1.3.178 | FAI360 - TopDock harness - 4377537-1/2 | 5-188 |
| 5.1.3.179 | FAI360 - TopDock harness - 4377537-2/2 | 5-189 |
| 5.1.3.180 | FAI361 - Adapter harness for wheel angle sensor - ACW059817 | 5-190 |
| 6 | Hydraulics diagrams | 6-1 |
| | 6.1 Hydraulics diagrams | 6-3 |
| | 6.1.1 Hydraulics diagrams | 6-5 |
| | 6.1.1.1 HFD01022 - Standard auxiliary hydraulics diagram ML180/ML140 | 6-5 |
| | 6.1.1.2 HFD01032 - Standard hydraulics diagram, GTA2520 Open Center 57 l/ min | 6-6 |
| | 6.1.1.3 HFD01034 - Standard hydraulics diagram, GTA2520 Open Center 100 l/ min | 6-7 |
| | 6.1.1.4 HFD01047 - Standard hydraulics diagram, GTA2520 Load Sensing | 6-8 |
| | 6.1.1.5 HFD01060 - Auxiliary hydraulics diagram with all options, ML140 | 6-9 |
| | 6.1.1.6 HFD01061 - Auxiliary hydraulics diagram: all options, GTA2520 Load Sensing | 6-10 |
| | 6.1.1.7 HFD01062 - Auxiliary hydraulics diagram: all options, GTA2520 Open Center 57 l/min | 6-11 |
| | 6.1.1.8 HFD01063 - Auxiliary hydraulics diagram: all options, GTA2520 Open Center 100 l/min | 6-12 |
| | 6.1.1.9 HFD02009 - ML180/ML140 Auto-Guide™/SpeedSteer steering system hydraulics diagram | 6-13 |
| | 6.1.1.10 HFD02010 - ML140/ML180 standard steering system hydraulics diagram | 6-14 |

| | | |
|----------|---|------|
| 6.1.1.11 | HFD03040 - Hydraulics diagram: ML180/ML140 brake system with trailer air brake | 6-15 |
| 6.1.1.12 | HFD03041 - Hydraulics diagram: ML180/ML140 brake system without trailer brake | 6-16 |
| 6.1.1.13 | HFD03052 - Hydraulics diagram: GTA2520 Open Center 57 L/min assisted braking | 6-17 |
| 6.1.1.14 | HFD03056 - Hydraulics diagram: GTA2520 Open Center 100 L/min assisted braking | 6-18 |
| 6.1.1.15 | HFD03059 - Hydraulics diagram: GTA2520 Load Sensing high-pressure braking with pneumatic trailer brake and Auto-Guide™ steering | 6-19 |
| 6.1.1.16 | HFD03060 - Hydraulics diagram: GTA2520 Load Sensing high pressure braking with trailer air brake | 6-20 |
| 6.1.1.17 | HFD03061 - Hydraulics diagram: GTA2520 Load Sensing assisted braking with pneumatic trailer brake and Auto-Guide™ steering | 6-21 |
| 6.1.1.18 | HFD03062 - Hydraulics diagram: GTA2520 Load Sensing assisted braking with trailer air brake | 6-22 |
| 6.1.1.19 | HFD03063 - Hydraulics diagram: GTA2520 Load Sensing high-pressure braking and Auto-Guide™ steering | 6-23 |
| 6.1.1.20 | HFD03064 - Hydraulics diagram: GTA2520 Load Sensing high pressure braking | 6-24 |
| 6.1.1.21 | HFD03065 - Hydraulics diagram: GTA2520 Load Sensing assisted braking and Auto-Guide™ steering | 6-25 |
| 6.1.1.22 | HFD03066 - Hydraulics diagram: GTA2520 Load Sensing assisted braking | 6-26 |
| 6.1.1.23 | HFD03075 - Hydraulics diagram: Open Center 57 l/min assisted braking with front suspension and trailer brake | 6-27 |
| 6.1.1.24 | HFD03076 - Hydraulics diagram: Open Center 57 l/min high-pressure braking with front suspension and trailer brake | 6-28 |
| 6.1.1.25 | HFD03077 - Hydraulics diagram: Open Center 57 l/min high-pressure braking and front suspension | 6-29 |
| 6.1.1.26 | HFD03078 - Hydraulics diagram: Open Center 100 l/min assisted braking with front suspension and trailer brake | 6-30 |
| 6.1.1.27 | HFD03079 - Hydraulics diagram: Open Center 100 l/min high-pressure braking with front suspension and trailer brake | 6-31 |
| 6.1.1.28 | HFD03080 - Hydraulics diagram: Open Center 100 l/min high-pressure braking and front suspension | 6-32 |
| 6.1.1.29 | HFD04004 – ML140/ML180 rear linkage hydraulics diagram | 6-33 |
| 6.1.1.30 | HFD05004 – ML140/ML180 front linkage hydraulics diagram | 6-34 |
| 6.1.1.31 | HFD05008 - Hydraulics diagram: GTA2520 Load Sensing front linkage and front spool valves with front set | 6-35 |
| 6.1.1.32 | HFD05009 - Hydraulics diagram: GTA2520 Load Sensing front linkage without front set | 6-36 |
| 6.1.1.33 | HFD06006 - Hydraulics diagram: ML180/ML140 auxiliary electrohydraulic spool valves | 6-37 |
| 6.1.1.34 | HFD06009 - Hydraulics diagram: ML180/ML140 auxiliary electrohydraulic and mechanical spool valves | 6-38 |
| 6.1.1.35 | HFD06012 - Hydraulics diagram: GTA2520 Load Sensing rear spool valves, four mechanical and Power Beyond | 6-39 |
| 6.1.1.36 | HFD06013 - Hydraulics diagram: GTA2520 Load Sensing rear spool valves, two mechanical and two electrohydraulic | 6-40 |
| 6.1.1.37 | HFD06014 - Hydraulics diagram: GTA2520 Load Sensing rear spool valves, four electrohydraulic and Power Beyond | 6-41 |
| 6.1.1.38 | HFD07004 – ML140/ML180 auto-hitch hydraulics diagram | 6-42 |
| 6.1.1.39 | HFD08008 - Hydraulics diagram: ML140 suspended front axle | 6-43 |
| 6.1.1.40 | HFD10000_1 – ALO loader hydraulics diagram | 6-44 |
| 6.1.1.41 | HFD10009 - Hydraulics diagram: ML140/ML180 tractor with loader | 6-45 |
| 6.1.1.42 | HFD10014 - Hydraulics diagram: GTA2520 Load Sensing loader with front set | 6-46 |

| | | |
|------------|--|-------------|
| 6.1.1.43 | HFD10015 - Hydraulics diagram: GTA2520 Load Sensing loader without front set | 6-47 |
| 6.1.1.44 | HFD10019 - Hydraulics diagram: ML140/180 Load Sensing loader with front set and 3rd function | 6-48 |
| 6.1.1.45 | HFD10020 - Hydraulics diagram: GTA2520 Load Sensing loader with front set and 3rd function | 6-49 |
| 6.1.1.46 | Transmission hydraulics diagram | 6-50 |
| 7 | Pneumatic diagrams | 7-1 |
| 7.1 | Pneumatic diagrams | 7-3 |
| 7.1.1 | Pneumatic diagrams | 7-5 |
| 7.1.1.1 | PFD01015 - GPA40/ML140/ML180 pneumatic trailer braking | 7-5 |
| 7.1.1.2 | PFD01016 - GPA20 pneumatic trailer braking | 7-6 |
| 8 | Adjustments, bleeding and calibrations | 8-1 |
| 8.1 | Bleeding | 8-3 |
| 8.1.1 | Bleeding: Dyna-VT - Assisted brake master cylinders | 8-3 |
| 8.1.1.1 | Charge connector | 8-3 |
| 8.1.1.2 | Pressure connector | 8-3 |
| 8.1.1.3 | Bleed screw locations | 8-3 |
| 8.1.1.4 | Procedure for bleeding the assisted braking system | 8-4 |
| 8.1.2 | Bleeding: Dyna-4/Dyna-6 - Assisted brake master cylinders | 8-6 |
| 8.1.2.1 | Charge connector | 8-6 |
| 8.1.2.2 | Pressure connector - Load Sensing system | 8-6 |
| 8.1.2.3 | Pressure connector - Open Center system | 8-6 |
| 8.1.2.4 | Bleed screw locations | 8-7 |
| 8.1.2.5 | Procedure for bleeding the assisted braking system | 8-8 |
| 8.1.3 | Bleeding: Dyna-4/Dyna-6 - High-pressure braking | 8-10 |
| 8.1.3.1 | Bleed screw locations | 8-10 |
| 8.1.3.2 | Procedure for bleeding the high-pressure braking system | 8-11 |
| 8.2 | Calibrations | 8-13 |
| 8.2.1 | Calibration of the clutch pedal sensor | 8-13 |
| 8.2.2 | Calibration of the throttle pedal sensor | 8-13 |
| 8.2.3 | Calibrating the rear linkage | 8-14 |
| 8.2.4 | Calibration of the front linkage position sensor | 8-16 |
| 8.2.5 | Calibrate the suspended front axle. | 8-17 |
| 8.2.6 | Calibrating the automatic disengagement of the differential and 4-wheel drive | 8-18 |
| 8.2.7 | Calibration of the forward-travel lever | 8-20 |
| 8.2.8 | Forward speed calibration | 8-22 |
| 8.2.9 | Front power take-off calibration for Dyna-4/Dyna-6 | 8-23 |
| 8.2.10 | Calibration of the Dyna-4 and Dyna-6 PowerShuttle transmission | 8-24 |
| 8.2.11 | Calibrating the power sensor on the Dyna-6 transmission | 8-27 |
| 8.2.12 | Dyna-VT transmission calibrations: Introduction and access to calibration using the instrument panel | 8-28 |
| 8.2.13 | Calibration of the high/low speed ranges (Hare/Tortoise) for Dyna-VT | 8-29 |
| 8.2.14 | Dyna-VT transmission calibration | 8-30 |
| 8.2.15 | Calibration of the Dyna-VT coupler function | 8-31 |
| 8.2.16 | Rear power take-off calibration for Dyna-VT | 8-32 |
| 8.2.17 | Front power take-off calibration for Dyna-VT | 8-33 |
| 8.2.18 | Dyna-VT transmission calibration error code | 8-34 |
| 8.2.19 | Calibrations to be carried out using the diagnostic tool | 8-37 |
| 8.2.19.1 | Calibrating the forward travel lever on the armrest | 8-37 |
| 8.2.19.2 | Calibration of the FingerTIP controls on the armrest | 8-39 |
| 8.2.19.3 | Calibration of the FingerTIPs on the console | 8-42 |
| 8.2.19.4 | Joystick calibration | 8-46 |
| 8.2.19.5 | Calibrating the forward travel lever on the armrest | 8-48 |
| 8.2.19.6 | Calibrating the hand throttle. | 8-51 |

8.2.19.7 Calibrating the depth control thumb wheel 8-53

1. General

| | |
|--|-------------|
| 1.1 General specifications | 1-3 |
| 1.1.1 tractors MF 6700 SDyna-4 | 1-3 |
| 1.1.2 Tractors MF 6700 SDyna-6 | 1-11 |
| 1.1.3 MF 6700 S Dyna-VT tractors | 1-20 |
| 1.2 Forward speeds | 1-30 |
| 1.2.1 Forward speed with Dyna-4 40 kph transmission and 18.4R38 tires | 1-30 |
| 1.2.2 Forward speed with Dyna-4 40 kph transmission and 20.8R38 tires | 1-30 |
| 1.2.3 Forward speed with Dyna-6 40 kph ECO transmission and 20.8R38 tires | 1-32 |
| 1.2.4 Forward speed with Dyna-6 50 kph transmission and 20.8R38 tires | 1-33 |
| 1.2.5 Forward speed for all models with transmission in Dyna-VT mode | 1-35 |
| 1.3 Dimensions and weights | 1-37 |
| 1.3.1 Dimensions and weights | 1-37 |
| 1.4 Attachment points | 1-41 |
| 1.4.1 Attachment points: MF 6712 S / MF 6713 S / MF 6714 S Dyna-4/Dyna-6 models without front linkage | 1-41 |
| 1.4.2 Attachment points: MF 6712 S / MF 6713 S / MF 6714 S Dyna-4/Dyna-6 models with front linkage | 1-43 |
| 1.4.3 Attachment points: MF 6715 S / MF 6716 S / MF 6718 S Dyna-4/Dyna-6 models without front linkage | 1-45 |
| 1.4.4 Attachment points: MF 6715 S / MF 6716 S / MF 6718 S Dyna-4/Dyna-6 models with front linkage | 1-47 |
| 1.4.5 Attachment points: MF 6713 S / MF 6714 S / MF 6715 S / MF 6716 S / MF 6718 S Dyna-VT models without front linkage: | 1-49 |
| 1.4.6 Attachment points: MF 6713 S / MF 6714 S / MF 6715 S / MF 6716 S / MF 6718 S Dyna-VT models with front linkage | 1-51 |
| 1.5 Capacities | 1-53 |
| 1.5.1 Capacities | 1-53 |
| 1.6 Tightening torques, retaining compounds and sealing products | 1-55 |
| 1.6.1 Retaining compounds and sealing products | 1-55 |
| 1.6.2 Tightening torques for screws and nuts | 1-56 |
| 1.6.3 Tightening torques for hydraulic unions | 1-60 |
| 1.7 Units of measurement | 1-64 |
| 1.7.1 Conversion table | 1-64 |

1.1 General specifications

1.1.1 tractors MF 6700 SDyna-4

| Engine | | | | |
|--|--------------------|-----------|-----------|-----------|
| Model | MF 6712 S | MF 6713 S | MF 6714 S | MF 6715 S |
| Brand | AGCO Power | | | |
| Type | 49 AWF | | | |
| Nominal power hp ISO (kW) at an engine speed of 2100 rpm | 110 (81) | 115 (85) | 130 (96) | 140 (103) |
| Maximum power hp ISO (kW) at an engine speed of 2000 rpm | 120 (88) | 130 (96) | 140 (103) | 150 (110) |
| Maximum EPM power hp ISO (kW) at an engine speed of 2000 rpm | 140 (103) | 150 (110) | 160 (118) | 175 (129) |
| Maximum EPM torque (Nm) | 614 Nm | 648 Nm | 691 Nm | 745 Nm |
| Engine displacement (in liters) | 4.9 | | | |
| Piston travel | 134 mm | | | |
| Piston diameter | 108 mm | | | |
| Compression ratio | 17,8 bar ± 0,5 bar | | | |
| Number of cylinders | 4 | | | |
| Idle speed, hand brake engaged | 750 rpm | | | |
| Idle speed, hand brake disengaged | 850 rpm | | | |
| Nominal speed | 2100 rpm | | | |
| Maximum speed | 2130 rpm | | | |
| Engine weight | 345 kg | | | |
| High-pressure pump brand | Bosch | | | |
| Fuel injection type | Common rail | | | |
| Firing order | 1-2-4-3 | | | |
| Maximum pressure in the high-pressure system | 2000 bar | | | |
| Injector brand | Bosch | | | |
| Injector type | CRIN 3.20 | | | |
| Charge pump type | Manual | | | |
| Fuel prefilter filtration capacity | 10 μ | | | |
| Main fuel filter filtration capacity | 5 μ | | | |

| Engine | | | | |
|---|---|-----------|-----------|-----------|
| Model | MF 6712 S | MF 6713 S | MF 6714 S | MF 6715 S |
| Low-pressure system pressure at minimum speed | 0,5 bar to 1 bar | | | |
| Low-pressure system pressure at maximum speed | 0,5 bar to 1 bar | | | |
| Recommended oil: | API-CJ4 or ACEA-E9 | | | |
| Maximum operating tilt (precautions) | 25° pitch | | | |
| | 20° roll | | | |
| Oil/fuel consumption | Maximum 0.2% | | | |
| Lubrication system | Gear pump | | | |
| Oil cooling system | Oil/water heat exchanger | | | |
| Oil pressure at minimum speed | 1,5 bar | | | |
| Oil pressure at maximum speed | 2,5 bar at 5 bar depending on the temperature | | | |
| Relief valve adjustment pressure | 5 bar (spring pressure) | | | |
| Air suction type | Turbocharged with air/air intercooler | | | |
| Air preheating type | Grid heater with relay controlled by the ECU | | | |
| Number of valves | 16 | | | |
| Valve clearance value | 0,35 mm (inlet and exhaust) | | | |
| Engine cooling system | Coolant | | | |
| Fan type | Viscostatic | | | |
| Thermostat begins to open at | 83 °C | | | |
| Coolant temperature | -36 °C to +106 °C | | | |
| Air compressor brand for the brake system | Knorr Bremse | | | |
| Type of compressor | Piston | | | |
| Pressure range: | 6,5 bar to 8 bar | | | |
| Block preheater | 110 or 220 volts | | | |
| Fuel preheater | Optional | | | |
| Urea preheater | Tank: coolant | | | |
| Exhaust fumes recirculation system | Pump module and supply lines: electric | | | |
| DOC + SCR system (DEF or AdBlue™ injection) | DOC with metal substrate (exhaust fumes oxidation catalyzer) | | | |
| | SCR Technology with 1 ceramic substrate (exhaust fumes treatment) | | | |
| Safety system | NOx sensors at exhaust inlet and outlet | | | |



Suggest:

For more complete manuals. Please go to the home page.

<https://www.ebooklibonline.com>

If the above button click is invalid. Please download this document first, and then click the above link to download the complete manual.

Thank you so much for reading

| Engine | | | | |
|--|------------------------------|-----------|-----------|-----------|
| Model | MF 6712 S | MF 6713 S | MF 6714 S | MF 6715 S |
| Device brand | Bosch Denox 2.2+ | | | |
| Type of control | Engine controller EEM4 | | | |
| Urea solidification temperature | -11 °C | | | |
| Oil vapor recirculation system | Closed system breather (CCV) | | | |
| Belt: Air conditioning compressor/ left-hand alternator | Poly V belt | | | |
| Belt: Fan/right-hand alternator | Poly V belt | | | |
| Belt: Air compressor | Poly V belt | | | |

| Rear axle transmission | | |
|---|--|------------------------|
| Model | MF 6712 S/MF 6713 S | MF 6714 S/MF 6715 S |
| Gearbox type | GBA25 | |
| Number of ratios | 4 | |
| Number of ranges | 4 | |
| Number of gears | 16/16 | |
| Super creeper gears | 14/1 | |
| Number of gears with super creeper gears | 32/32 | |
| Maximum speed | 40 km/h | |
| Rear axle type | GPA22/22+ | GPA23/23+ |
| Number of pinion/crown wheel teeth | 8/39 | 8/39 |
| Rear axle ratio | 24.75 | 27.16 |
| 4WD ratio | 0.83 | 0.83 |
| Final drive type | Heavy Duty (HD) or Heavy Duty + (HD+) | Super Heavy Duty (SHD) |
| Final drive reduction ratio | (53+13)/13 | (64+14)/14 |
| Maximum 4WD clutch torque | 180 daNm | 206 daNm |
| Number of 4WD disks | 6 disks | |
| Main brake type | Disk | |
| Number of disks per side | 1 disk | |
| Braking pressure | 66 - 70 bar | |
| Parking brake type | Hand brake | |

| Rear axle transmission | | |
|---|---|---------------------|
| Model | MF 6712 S/MF 6713 S | MF 6714 S/MF 6715 S |
| Trailer brake type | Hydraulic and pneumatic with built-in antifreeze pump | |
| Pneumatic trailer braking pressure | 6,9 bar to 8,3 bar | |
| Hydraulic trailer braking pressure | 0 to 150 bar | |
| Maximum operating tilt - pitch (front/rear) | 15° (> 15 km/h) 22° (< or = 15 km/h) | |
| Maximum operating tilt - roll (right/left) | 15° (> 15 km/h) 22° (< or = 15 km/h) | |
| Maximum operating tilt - combined | 15° (> 15 km/h) 22° (< or = 15 km/h) | |
| Total loaded weight supported by rear axle | 7600 kg | 9000 kg |

| Front axle | | |
|--|-------------------------------|-----------|
| Model | MF 6712 S/MF 6713 S/MF 6714 S | MF 6715 S |
| Brand | DANA | |
| Axle type | Suspended or fixed | |
| Supplier reference - suspended axle | 735/614 | 735/613 |
| Suspended front axle weight | 587 kg | 587 kg |
| Supplier reference - fixed axle | 735/528 | 735/530 |
| Fixed front axle weight | 347 kg | 347 kg |
| Number of differential disks | 12 | |
| Total ratio for fixed and suspended front axle | 15.5 | 17 |
| Total loaded weight supported by front axle | 5000 kg | 6000 kg |
| Rotational direction | Anti-clockwise | |
| Recommended oil type (beam and final drive) | SAE85W90 (API GL5-MIL 2105B) | |
| Ratio for fixed and suspended axle final drive | 6 | |
| Number of pinion/crown wheel teeth | 12/31 | 12/34 |
| Maximum steering angle | 55° | |

<https://www.ebooklibonline.com>

Hello dear friend!

Thank you very much for reading.

Enter the link into your browser.

The full manual is available for immediate download.

<https://www.ebooklibonline.com>