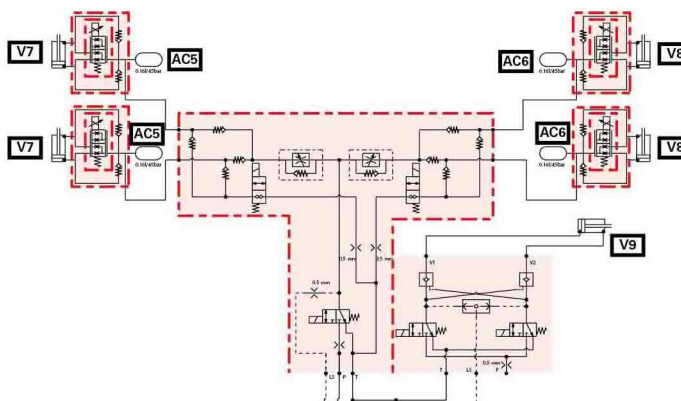
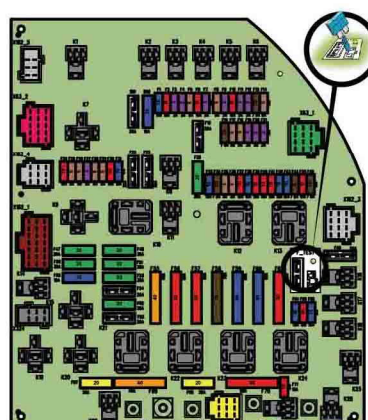


Technician Service Book - MF 5700 SL

Schémas électriques et hydrauliques



Technician Service Book - MF 5700 SL

1 General	1-1
1.1 General specifications	1-3
1.1.1 Models MF 5700 SL	1-3
1.2 Forward speeds	1-12
1.2.1 Forward speed at 2200 rpm for models MF 5710 SL, MF 5711 SL, MF 5712 SL, MF 5713 SL and 16.9R34 tires	1-12
1.2.2 Forward speed at 2200 rpm for models MF 5710 SL, MF 5711 SL, MF 5712 SL, MF 5713 SL and 18.4R38 tires	1-13
1.3 Dimensions and weights	1-15
1.3.1 Dimensions and weights	1-15
1.4 Attachment points	1-18
1.4.1 Attachment points	1-18
1.5 Capacities	1-20
1.5.1 Capacities	1-20
1.6 Tightening torques, retaining compounds and sealing products	1-21
1.6.1 Retaining compounds and sealing products	1-21
1.6.2 Tightening torques for screws and nuts	1-22
1.6.3 Tightening torques for hydraulic unions	1-26
1.7 Units of measurement	1-30
1.7.1 Conversion table	1-30
2 Error codes	2-1
2.1 Error codes	2-3
2.1.1 General table of faults	2-3
2.1.2 Indicator light panel	2-6
2.1.3 Indication of faults	2-12
2.1.4 Description of error code format	2-15
2.1.5 Instrument panel error codes Dyna-4/Dyna-6	2-16
2.1.6 AGCO Power Tier 3/Stage IIIA engine and Tier 4F/Stage IV SCR Technology engine error codes	2-17
2.1.7 Transmission error codes Dyna-4/Dyna-6	2-32
2.1.8 Electro-hydraulic unit error codes	2-34
2.1.9 Front axle error codes for Dyna-4/Dyna-6	2-36
2.1.10 Power take-off error codes Dyna-4/Dyna-6	2-36
2.1.11 Error codes for the high-pressure braking	2-36
2.1.12 Rear linkage error codes	2-37
2.1.13 Front power lift error codes	2-38
2.1.14 Armrest error codes	2-38
2.1.15 Hydraulic valve error codes	2-40
2.1.16 Air conditioning error codes	2-41
2.1.17 Error codes of the keypad in the pillar	2-43
3 Fuse box	3-1
3.1 Fuse box	3-3
3.1.1 Fuse box description	3-3
3.1.2 Description of the secondary fuse box (depending on model)	3-13
3.1.3 Battery isolator	3-16
4 Electrical diagrams	4-1
4.1 Electrical diagrams	4-5

4.1.1	Identification of electrical diagrams	4-5
4.1.2	Identification of electrical connectors from X1 to X500	4-7
4.1.3	Identification of electrical connectors from X501 to X1000	4-19
4.1.4	Identification table for cable colors	4-28
4.1.5	Electrical diagrams	4-31
4.1.5.1	EFD00000_14 - Battery 12 V power supply points	4-31
4.1.5.2	EFD00000_15 - Battery earth points	4-32
4.1.5.3	EFD00100_18 - 4-wheel drive Dyna-6	4-33
4.1.5.4	EFD00100_19 - 4-wheel drive Dyna-4	4-34
4.1.5.5	EFD00101_18 - Differential lock Dyna-6	4-34
4.1.5.6	EFD00101_19 - Differential lock Dyna-4	4-35
4.1.5.7	EFD00106_25 - two or three-speed rear power take-off Dyna-4	4-36
4.1.5.8	EFD00106_26 - two or three-speed rear power take-off Dyna-6	4-37
4.1.5.9	EFD00107_12 - front power take-off Dyna-6	4-38
4.1.5.10	EFD00107_13 - front power take-off Dyna-4	4-39
4.1.5.11	EFD00111_37 - transmission Dyna-6 Essential - 1/4	4-40
4.1.5.12	EFD00111_37 - transmission Dyna-6 Essential- 2/4	4-41
4.1.5.13	EFD00111_37 - transmission Dyna-6 Efficient- 3/4	4-42
4.1.5.14	EFD00111_37 - transmission Dyna-6 Efficient - 4/4	4-43
4.1.5.15	EFD00111_38 - transmission Dyna-4 Essential - 1/4	4-44
4.1.5.16	EFD00111_38 - transmission Dyna-4 Essential - 2/4	4-45
4.1.5.17	EFD00111_38 - transmission Dyna-4 Efficient - 3/4	4-46
4.1.5.18	EFD00111_38 - transmission Dyna-4 Efficient - 4/4	4-47
4.1.5.19	EFD00113_7 - Cigarette lighter	4-48
4.1.5.20	EFD00114_30 - Radio	4-49
4.1.5.21	EFD00117_28 - Additional heater	4-50
4.1.5.22	EFD00117_39 - Automatic air conditioning	4-51
4.1.5.23	EFD00117_40 - Manual air conditioning for standard roof	4-52
4.1.5.24	EFD00117_41 - Manual air conditioning for high-visibility roof	4-53
4.1.5.25	EFD00118_9 - DOT Matrix	4-54
4.1.5.26	EFD00119_10 - Rear windscreen wiper	4-55
4.1.5.27	EFD00120_12 - Front windscreen wiper	4-56
4.1.5.28	EFD00121_10 - parking brake Dyna-6	4-57
4.1.5.29	EFD00121_11 - parking brake Dyna-4	4-58
4.1.5.30	EFD00122_9 - Dyna-4/ fuel gage Dyna-6	4-59
4.1.5.31	EFD00123_24 - Datatronic CCD	4-60
4.1.5.32	EFD00123_25 - Isobus	4-61
4.1.5.33	EFD00123_31 - Auto-Guide™ Dyna-6	4-62
4.1.5.34	EFD00123_31 - Auto-Guide™ Dyna-4	4-63
4.1.5.35	EFD00125_10 - Cab light	4-64
4.1.5.36	EFD00126_11 - Extreme cold weather heating with automatic air conditioning	4-65
4.1.5.37	EFD00126_12 - Extreme cold weather heating with manual air conditioning for tractors with standard roof	4-66
4.1.5.38	EFD00126_13 - Extreme cold weather heating with manual air conditioning for tractors with high-visibility roof	4-67
4.1.5.39	EFD00126_14 - Extreme cold weather heating with manual air conditioning for tractors with flat roof	4-68
4.1.5.40	EFD00127_8 - Left-hand pillar 12 V socket	4-69
4.1.5.41	EFD00128_17 - EAME/ISO cab power socket	4-70
4.1.5.42	EFD00128_18 - NA/SAE cab power socket	4-71
4.1.5.43	EFD00128_20 - EAME/ISO cab power socket_1/2	4-72
4.1.5.44	EFD00128_20 - EAME/ISO cab power socket_2/2	4-73
4.1.5.45	EFD00128_21 - NA/SAE cab power socket_1/2	4-74
4.1.5.46	EFD00128_21 - NA/SAE cab power socket_2/2	4-75
4.1.5.47	EFD00129_12 - Diagnostics connector_1/2	4-76
4.1.5.48	EFD00129_12 - Diagnostics connector_2/2	4-77
4.1.5.49	EFD00130_6 - Dyna-6 and radar Dyna-4	4-79

<https://www.ebooklibonline.com>

Hello dear friend!

Thank you very much for reading.

Enter the link into your browser.

The full manual is available for immediate download.

<https://www.ebooklibonline.com>

4.1.5.50 EFD00131_35 - CAN network Dyna-6 (tractor)_1/7 with Tier 4F/Stage IV SCR Technology engine and cab harnesses ACW005780-ACW005784-4392642	4-79
4.1.5.51 EFD00131_35 - CAN network Dyna-6 (engine)_2/7 with Tier 4F/Stage IV SCR Technology engine and cab harnesses ACW005780-ACW005784-4392642	4-80
4.1.5.52 EFD00131_35 - CAN network Dyna-6 (hitch)_3/7 with Tier 4F/Stage IV SCR Technology engine and cab harnesses ACW005780-ACW005784-4392642	4-81
4.1.5.53 EFD00131_35 - CAN network Dyna-6 (isobus)_4/7 with Tier 4F/Stage IV SCR Technology engine and cab harnesses ACW005780-ACW005784-4392642	4-82
4.1.5.54 EFD00131_35 - CAN network Dyna-6 (tractor)_5/7 with Tier 4F/Stage IV SCR Technology engine and cab harnesses ACW005780-ACW005784-4392642	4-83
4.1.5.55 EFD00131_35 - CAN network Dyna-6 (engine)_6/7 with Tier 4F/Stage IV SCR Technology engine and cab harnesses ACW005780-ACW005784-4392642	4-84
4.1.5.56 EFD00131_35 - CAN network Dyna-6 (AGCO Power)_7/7 with Tier 4F/Stage IV SCR Technology engine and cab harnesses ACW005780-ACW005784-4392642	4-85
4.1.5.57 EFD00131_36 - CAN network Dyna-4 (tractor)_1/3 with Tier 4F/Stage IV SCR Technology engine and cab harnesses ACW017847-ACW022303-ACW021492-4391826	4-86
4.1.5.58 EFD00131_36 - CAN network Dyna-4 (engine)_2/3 with Tier 4F/Stage IV SCR Technology engine and cab harnesses ACW017847-ACW022303-ACW021492-4391826	4-87
4.1.5.59 EFD00131_36 - CAN network Dyna-4 AGCO Power_3/3 with Tier 4F/Stage IV SCR Technology engine and cab harnesses ACW017847-ACW022303-ACW021492-4391826	4-88
4.1.5.60 EFD00132_7 - Electric rear-view mirrors	4-89
4.1.5.61 EFD00133_7 - Pneumatic seat	4-90
4.1.5.62 EFD00135_11 - Ventilation for tractors with standard roof	4-91
4.1.5.63 EFD00135_12 - Ventilation for tractors with high-visibility roof	4-92
4.1.5.64 EFD00136_59 - EAME direction indicators and hazard warning lights - standard roof	4-93
4.1.5.65 EFD00136_60 - NA direction indicators and hazard warning lights	4-94
4.1.5.66 EFD00136_61 - EAME direction indicators and hazard warning lights - high-visibility roof	4-95
4.1.5.67 EFD00137_23 - Number plate lighting (except Italy)	4-96
4.1.5.68 EFD00137_24 - Italian number plate lighting	4-97
4.1.5.69 EFD00137_26 - Number plate lighting for tractors with flat roof	4-98
4.1.5.70 EFD00138_36 - EAME side lights	4-99
4.1.5.71 EFD00138_37 - NA side lights	4-100
4.1.5.72 EFD00139_9 - Reversing light Dyna-6	4-101
4.1.5.73 EFD00139_10 - Reversing light Dyna-4	4-102
4.1.5.74 EFD00140_52 - High beam lamps and low beam lamps on grille	4-103
4.1.5.75 EFD00140_53 - High beam lamps and low beam lamps on grille + hand rail	4-104
4.1.5.76 EFD00141_81 - Work lights for tractors with panoramic cab	4-105
4.1.5.77 EFD00141_83 - Work lights	4-106
4.1.5.78 EFD00141_82 - Work lights + high beam lamps on hand rails for tractors with panoramic cab	4-107
4.1.5.79 EFD00141_84 - Work lights + high beam lamps on hand rails	4-108
4.1.5.80 EFD00142_13 - Brake lights Dyna-6	4-109
4.1.5.81 EFD00142_14 - Brake lights Dyna-4	4-110
4.1.5.82 EFD00143_27 - Rotary beacon	4-111
4.1.5.83 EFD00144_8 - Control module	4-112
4.1.5.84 EFD00145_13 - NA trailer connector	4-113
4.1.5.85 EFD00145_14 - EAME trailer connector	4-114
4.1.5.86 EFD00146_9 - Automatic air conditioning back-lighting	4-115
4.1.5.87 EFD00146_10 - Manual air conditioning back-lighting	4-116
4.1.5.88 EFD00146_11 - Manual air conditioning back-lighting for tractors with high-visibility roof	4-117

4.1.5.89 EFD00148_13 - Audible alarm 4-118

4.1.5.90 EFD00149_19 - Battery charge + start-up Dyna-4/Dyna-6 Efficient and Dyna-6 Essential 4-119

4.1.5.91 EFD00149_19 - Battery charge + start-up Dyna-4 Essential 4-120

4.1.5.92 EFD00150_8 - Air filter vacuum sensor 4-121

4.1.5.93 EFD00151_27 - AGCO Power engine electronic injection for Efficient and tractor versions Exclusive (44/66/74 AWF engine) 4-122

4.1.5.94 EFD00151_28 - AGCO Power engine electronic injection for tractor versions Essential (44/66/74 AWF engine) 4-123

4.1.5.95 EFD00151_38 - engine electronic injection AGCO Power 4-124

4.1.5.96 EFD00152_18 - DANA suspended front axle 4-125

4.1.5.97 EFD00153_21 - Preheating power supply AGCO Power 4-126

4.1.5.98 EFD00154_6 - Fuel preheater 4-127

4.1.5.99 EFD00157_8 - Vistronic 4-128

4.1.5.100 EFD00160_24 - 57 l/min Open Center rear linkage 4-129

4.1.5.101 EFD00160_25 - 100 l/min Open Center rear linkage 4-130

4.1.5.102 EFD00161_11 - Dyna-6 and front linkage Dyna-4 4-131

4.1.5.103 EFD00169_19 - Controller power supply Dyna-6 - Transmission 4-132

4.1.5.104 EFD00169_19 - Controller power supply Dyna-6 - linkage 4-133

4.1.5.105 EFD00169_19 - Controller power supply Dyna-6 - suspended front axle (TECU) 4-134

4.1.5.106 EFD00169_19 - Controller power supply Dyna-6 - Instrument panel 4-135

4.1.5.107 EFD00169_19 - Controller power supply Dyna-6 - electrohydraulic block 4-136

4.1.5.108 EFD00169_21 - Controller power supply Dyna-4 - Transmission 4-137

4.1.5.109 EFD00169_21 - Controller power supply Dyna-4 - linkage 4-138

4.1.5.110 EFD00169_21 - Controller power supply Dyna-4 - Instrument panel 4-139

4.1.5.111 EFD00169_21 - Controller power supply Dyna-4 - suspended front axle (TECU) 4-140

4.1.5.112 EFD00169_21 - Controller power supply Dyna-4 - electrohydraulic block 4-141

4.1.5.113 EFD00172_6 - Front accessory connection socket_1/2 4-142

4.1.5.114 EFD00172_6 - Front accessory connection socket_2/2 4-143

4.1.5.115 EFD00173_7 - Water in fuel sensor of the Tier 4F/Stage IV SCR Technology engine 4-144

4.1.5.116 EFD00174_14 - GPA20 and GPA50 air brake Dyna-6 4-145

4.1.5.117 EFD00174_15 - GPA20 and GPA50 air brake Dyna-4 4-146

4.1.5.118 EFD00175 - Tier4f/Stage IV AGCO Power engine_1/3 4-147

4.1.5.119 EFD00175 - Tier4f/Stage IV AGCO Power engine_2/3 4-148

4.1.5.120 EFD00175 - Tier4f/Stage IV AGCO Power engine_3/3 4-149

4.1.5.121 EFD00175_8 - SCR Technology 4-150

4.1.5.122 EFD00176_11 - Electrohydraulic blocks 4-151

4.1.5.123 EFD00178_5 - Steering SpeedSteer 4-152

4.1.5.124 EFD00183_2 - Implement attachment without Isobus 4-153

4.1.5.125 EFD00184_3 - AgCommand™ 4-154

5 Harnesses 5-1

5.1 Harnesses 5-5

5.1.1 Identification of harnesses 5-5

5.1.2 Identification table for cable colors 5-8

5.1.3 Harnesses 5-11

5.1.3.1 FAI200 - Engine harness - ACW012081_1/4 5-11

5.1.3.2 FAI200 - Engine harness - ACW012081_2/4 5-12

5.1.3.3 FAI200 - Engine harness - ACW012081_3/4 5-13

5.1.3.4 FAI200 - Engine harness - ACW012081_4/4 5-14

5.1.3.5 FAI200 - Engine harness cab - ACW0349940_1/2 5-15

5.1.3.6 FAI200 - Engine harness cab - ACW0349940_2/2 5-16

5.1.3.7 FAI201 - Front headlights harness - ACW030858_1/2 5-17

5.1.3.8	FAI201 - Front headlights harness - ACW030858_2/2	5-18
5.1.3.9	FAI202 - Suspended front axle harness - ACW030838_1/2	5-19
5.1.3.10	FAI202 - Suspended front axle harness - ACW030838_2/2	5-20
5.1.3.11	FAI203 - Transmission harness external GTA2550 - ACW076051_1/3	5-21
5.1.3.12	FAI203 - Transmission harness external GTA2550 - ACW076051_2/3	5-22
5.1.3.13	FAI203 - Transmission harness external GTA2550 - ACW076051_3/3	5-23
5.1.3.14	FAI203 - Transmission harness external GTA2550 - ACW076057_1/2	5-24
5.1.3.15	FAI203 - Transmission harness external GTA2550 - ACW076057_2/2	5-25
5.1.3.16	FAI210 - Cab transmission harness Dyna-6 short console - ACW005780_1/8	5-26
5.1.3.17	FAI210 - Cab transmission harness Dyna-6 short console - ACW005780_2/8	5-27
5.1.3.18	FAI210 - Cab transmission harness Dyna-6 short console - ACW005780_3/8	5-28
5.1.3.19	FAI210 - Cab transmission harness Dyna-6 short console - ACW005780_4/8	5-29
5.1.3.20	FAI210 - Cab transmission harness Dyna-6 short console - ACW005780_5/8	5-30
5.1.3.21	FAI210 - Cab transmission harness Dyna-6 short console - ACW005780_6/8	5-31
5.1.3.22	FAI210 - Cab transmission harness Dyna-6 short console - ACW005780_7/8	5-32
5.1.3.23	FAI210 - Cab transmission harness Dyna-6 short console - ACW005780_8/8	5-33
5.1.3.24	FAI210 - Cab transmission harness Dyna-6 long console - ACW005784_1/8	5-34
5.1.3.25	FAI210 - Cab transmission harness Dyna-6 long console - ACW005784_2/8	5-35
5.1.3.26	FAI210 - Cab transmission harness Dyna-6 long console - ACW005784_3/8	5-36
5.1.3.27	FAI210 - Cab transmission harness Dyna-6 long console - ACW005784_4/8	5-37
5.1.3.28	FAI210 - Cab transmission harness Dyna-6 long console - ACW005784_5/8	5-38
5.1.3.29	FAI210 - Cab transmission harness Dyna-6 long console - ACW005784_6/8	5-39
5.1.3.30	FAI210 - Cab transmission harness Dyna-6 long console - ACW005784_7/8	5-40
5.1.3.31	FAI210 - Cab transmission harness Dyna-6 long console - ACW005784_8/8	5-41
5.1.3.32	FAI210 - Cab transmission harness Dyna-4 short console - ACW021492_1/8	5-42
5.1.3.33	FAI210 - Cab transmission harness Dyna-4 short console - ACW021492_2/8	5-43
5.1.3.34	FAI210 - Cab transmission harness Dyna-4 short console - ACW021492_3/8	5-44
5.1.3.35	FAI210 - Cab transmission harness Dyna-4 short console - ACW021492_4/8	5-45
5.1.3.36	FAI210 - Cab transmission harness Dyna-4 short console - ACW021492_5/8	5-46
5.1.3.37	FAI210 - Cab transmission harness Dyna-4 short console - ACW021492_6/8	5-47
5.1.3.38	FAI210 - Cab transmission harness Dyna-4 short console - ACW021492_7/8	5-48
5.1.3.39	FAI210 - Cab transmission harness Dyna-4 short console - ACW021492_8/8	5-49
5.1.3.40	FAI210 - Cab transmission harness Dyna-4 long console - ACW022303_1/7	5-50

5.1.3.41	FAI210 - Cab transmission harness Dyna-4 long console - ACW022303_2/7	5-51
5.1.3.42	FAI210 - Cab transmission harness Dyna-4 long console - ACW022303_3/7	5-52
5.1.3.43	FAI210 - Cab transmission harness Dyna-4 long console - ACW022303_4/7	5-53
5.1.3.44	FAI210 - Cab transmission harness Dyna-4 long console - ACW022303_5/7	5-54
5.1.3.45	FAI210 - Cab transmission harness Dyna-4 long console - ACW022303_6/7	5-55
5.1.3.46	FAI210 - Cab transmission harness Dyna-4 long console - ACW022303_7/7	5-56
5.1.3.47	FAI212 - Lighting harness NA - 4377263_1/3	5-57
5.1.3.48	FAI212 - Lighting harness NA - 4377263_2/3	5-58
5.1.3.49	FAI212 - Lighting harness NA - 4377263_3/3	5-59
5.1.3.50	FAI212 - Lighting harness EAME - 4377264_1/3	5-60
5.1.3.51	FAI212 - Lighting harness EAME - 4377264_2/3	5-61
5.1.3.52	FAI212 - Lighting harness EAME - 4377264_3/3	5-62
5.1.3.53	FAI219 - Cab interior power socket harness - 4290574_1/2	5-63
5.1.3.54	FAI219 - Cab interior power socket harness - 4290574_2/2	5-64
5.1.3.55	FAI219 - Cab interior power socket harness - 4290575_1/2	5-65
5.1.3.56	FAI219 - Cab interior power socket harness - 4290575_2/2	5-66
5.1.3.57	FAI223 - Roof harness standard with manual air conditioning - 4353057_1/3	5-67
5.1.3.58	FAI223 - Roof harness standard with manual air conditioning - 4353057_2/3	5-68
5.1.3.59	FAI223 - Roof harness standard with manual air conditioning - 4353057_3/3	5-69
5.1.3.60	FAI223 - Roof harness_High visibility - 4375395_1/3	5-70
5.1.3.61	FAI223 - Roof harness_High visibility_4375395_2/3	5-71
5.1.3.62	FAI223 - Roof harness_High visibility_4375395_3/3	5-72
5.1.3.63	FAI223 - Roof harness_High-visibility_municipal_cab_4381001_1/3	5-73
5.1.3.64	FAI223 - Roof harness_High-visibility_municipal_cab_4381001_2/3	5-74
5.1.3.65	FAI223 - Roof harness_High-visibility_municipal_cab_4381001_3/3	5-75
5.1.3.66	FAI223 - Roof harness_standard_municipal_cab_ACW001936_1/3	5-76
5.1.3.67	FAI223 - Roof harness_standard_municipal_cab_ACW001936_2/3	5-77
5.1.3.68	FAI223 - Roof harness_standard_municipal_cab_ACW001936_3/3	5-78
5.1.3.69	FAI225 - Electric rear-view mirror harness - 4352622_1/2	5-79
5.1.3.70	FAI225 - Electric rear-view mirror harness - 4352622_2/2	5-80
5.1.3.71	FAI227 - Roof harness with automatic air conditioning - 4352621_1/3	5-81
5.1.3.72	FAI227 - Roof harness with automatic air conditioning - 4352621_2/3	5-82
5.1.3.73	FAI227 - Roof harness with automatic air conditioning - 4352621_3/3	5-83
5.1.3.74	FAI228 - Number plate lighting harness - 4353107_1/2	5-84
5.1.3.75	FAI228 - Number plate lighting harness - 4353107_2/2	5-85
5.1.3.76	FAI228 - Number plate lighting harness number plate on flat roof - 4382234_1/2	5-86
5.1.3.77	FAI228 - Number plate lighting harness number plate on flat roof - 4382234_2/2	5-87
5.1.3.78	FAI240 - +12 V permanent fuse box harness - ACW015790	5-88
5.1.3.79	FAI253 - Hand rail harness - 4379352_1/2	5-89
5.1.3.80	FAI253 - Hand rail harness - 4379352_2/2	5-90
5.1.3.81	FAI261 - Isobus harness - 4353130_1/2	5-91
5.1.3.82	FAI261 - Isobus harness - 4353130_2/2	5-92
5.1.3.83	FAI261 - Isobus harness - 4353133	5-93
5.1.3.84	FAI262 - Auto-Guide™ engine harness - 4296810_1/2	5-94
5.1.3.85	FAI262 - Auto-Guide™ engine harness - 4296810_2/2	5-95
5.1.3.86	FAI263 - Auto-Guide™ cab adapter harness - 4353936_1/2	5-96
5.1.3.87	FAI263 - Auto-Guide™ cab adapter harness - 4353936_2/2	5-97

5.1.3.88	FAI265 - Pneumatic braking harness Dyna-6 - ACW016913_1/2	5-98
5.1.3.89	FAI265 - Pneumatic braking harness Dyna-6 - ACW016913_2/2	5-99
5.1.3.90	FAI265 - Pneumatic braking harness Dyna-6- ACW034317_1/2	5-100
5.1.3.91	FAI265 - Pneumatic braking harness Dyna-6- ACW034317_2/2	5-101
5.1.3.92	FAI273 - Front linkage harness - Power socket - 4387229_1/2	5-102
5.1.3.93	FAI273 - Front linkage harness - Power socket - 4387229_2/2	5-103
5.1.3.94	FAI283 - TopDock harness - 4377536_1/2	5-104
5.1.3.95	FAI283 - TopDock harness - 4377536_2/2	5-105
5.1.3.96	FAI287 - ALO loader harness external without multi-function armrest - 4378794_1/2	5-106
5.1.3.97	FAI287 - ALO loader harness external without multi-function armrest - 4378794_2/2	5-107
5.1.3.98	FAI287 - ALO loader harness internal without multi-function armrest - 4378879_1/2	5-108
5.1.3.99	FAI287 - ALO loader harness internal without multi-function armrest - 4378879_2/2	5-109
5.1.3.100	FAI290 - Non-Isobus implement connector harness - 4296266_1/2	5-110
5.1.3.101	FAI290 - Non-Isobus implement connector harness - 4296266_2/2	5-111
5.1.3.102	FAI292 - NA indicator harness - 4350987	5-112
5.1.3.103	FAI292 - NA indicator harness - 4355519_1/2	5-113
5.1.3.104	FAI292 - NA indicator harness - 4355519_2/2	5-114
5.1.3.105	FAI292 - NA indicator harness - 4376780_1/2	5-115
5.1.3.106	FAI292 - NA indicator harness - 4376780_2/2	5-116
5.1.3.107	FAI293 - EAME indicator harness - 4350988	5-117
5.1.3.108	FAI293 - EAME indicator harness - 4355520_1/2	5-118
5.1.3.109	FAI293 - EAME indicator harness - 4355520_2/2	5-119
5.1.3.110	FAI294 - Additional heater harness - 4299327_1/2	5-120
5.1.3.111	FAI294 - Additional heater harness - 4299327_2/2	5-121
5.1.3.112	FAI299 - Battery isolator harness - ACW012324	5-122
5.1.3.113	FAI299 - Battery isolator harness - ACW012326	5-123
5.1.3.114	FAI299 - Battery isolator harness - ACW012368_1/2	5-124
5.1.3.115	FAI299 - Battery isolator harness - ACW012368_2/2	5-125
5.1.3.116	FAI300 - Air conditioning shunt harness - 4353106	5-126
5.1.3.117	FAI307 - Datatronic 4 harness - 4353638_1/2	5-127
5.1.3.118	FAI307 - Datatronic 4 harness - 4353638_2/2	5-128
5.1.3.119	FAI311 - Battery/starter positive cable harness - ACW012320	5-129
5.1.3.120	FAI312 - Cab/starter negative cable harness - ACW012366	5-130
5.1.3.121	FAI314 - Alternator harness - ACW012084_1/2	5-131
5.1.3.122	FAI314 - Alternator harness - ACW012084_2/2	5-132
5.1.3.123	FAI317 - Vistronic harness - ACW025338_1/2	5-133
5.1.3.124	FAI317 - Vistronic harness - ACW025338_2/2	5-134
5.1.3.125	FAI325 - Power take-off electric selector harness - 2-speed - 4381659_1/2	5-135
5.1.3.126	FAI325 - Power take-off electric selector harness - 2-speed - 4381659_2/2	5-136
5.1.3.127	FAI325 - Power take-off electric selector harness - 3-speed - 4381660_1/2	5-137
5.1.3.128	FAI325 - Power take-off electric selector harness - 3-speed - 4381660_2/2	5-138
5.1.3.129	FAI354 - External loader harness - 4374651_1/2	5-139
5.1.3.130	FAI354 - External loader harness - 4374651_2/2	5-140
5.1.3.131	FAI356 - Mid Mounted cab harness - 4353915_1/2	5-141
5.1.3.132	FAI356 - Mid Mounted cab harness - 4353915_2/2	5-142
5.1.3.133	FAI357 - External Mid Mounted harness - 4353713_1/2	5-143
5.1.3.134	FAI357 - External Mid Mounted harness - 4353713_2/2	5-144
5.1.3.135	FAI360 - TopDock harness - 4377537-1/2	5-145
5.1.3.136	FAI360 - TopDock harness - 4377537-2/2	5-146

6	Hydraulics diagrams	6-1
6.1	Hydraulics diagrams	6-3
6.1.1	Hydraulics diagrams	6-5
6.1.1.1	HFD01048 - Hydraulics diagram: all options, with Mid Mounted, Open Center 57 L/min	6-5
6.1.1.2	HFD01049 - Hydraulics diagram: all options, without Mid Mounted Open Center 57 L/min	6-6
6.1.1.3	HFD01050 - Hydraulics diagram: all options, with Mid Mounted Open Center 100 L/min	6-7
6.1.1.4	HFD01051 - Hydraulics diagram all options, without Mid Mounted Open Center 100 L/min	6-8
6.1.1.5	HFD01052 - Hydraulics diagram: all options with Mid Mounted Load Sensing	6-9
6.1.1.6	HFD01053 - Hydraulics diagram: all options without Mid Mounted Load Sensing	6-10
6.1.1.7	HFD02011 – Load Sensing standard steering system hydraulics diagram	6-11
6.1.1.8	HFD02012 – Load Sensing Auto-Guide™/Auto-Guide™ steering system hydraulics diagramSpeedSteer	6-12
6.1.1.9	HFD03067 - Hydraulics diagram: Open Center tractor braking with trailer brake	6-13
6.1.1.10	HFD03068 - Hydraulics diagram: Open Center tractor braking without trailer brake	6-14
6.1.1.11	HFD03069 - Hydraulics diagram: Load Sensing tractor braking with trailer brake	6-15
6.1.1.12	HFD03070 - Hydraulics diagram: Load Sensing tractor braking without trailer brake	6-16
7	Pneumatic diagrams	7-1
7.1	Pneumatic diagrams	7-3
7.1.1	Pneumatic diagrams	7-5
7.1.1.1	PFD01009 - Trailer brake pneumatic diagram	7-5
8	Adjustments, bleeding and calibrations	8-1
8.1	Bleeding	8-3
8.1.1	Bleeding the main brake system	8-3
8.1.1.1	Bleeding procedure	8-4
8.1.2	Bleeding the trailer brake system	8-5
8.2	Calibrations	8-6
8.2.1	Calibration of the clutch pedal sensor	8-6
8.2.2	Calibration of the throttle pedal sensor	8-6
8.2.3	Calibrating the rear linkage	8-7
8.2.4	Calibrate the suspended front axle	8-9
8.2.5	Calibrating the automatic disengagement of the differential and 4-wheel drive	8-10
8.2.6	Calibration of the forward-travel lever	8-12
8.2.7	Forward speed calibration	8-14
8.2.8	Front power take-off calibration for Dyna-4/Dyna-6	8-14
8.2.9	Calibration of the Dyna-4 and Dyna-6 PowerShuttle transmission	8-15
8.2.10	Calibration of electrohydraulic block	8-18
8.2.11	Calibrations to be carried out using the diagnostic tool	8-19
8.2.11.1	Joystick calibration	8-19
8.2.11.2	Calibrating the hand throttle	8-22
8.2.11.3	Calibrating the depth control thumb wheel	8-24

1. General

1.1 General specifications	1-3
1.1.1 Models MF 5700 SL	1-3
1.2 Forward speeds	1-12
1.2.1 Forward speed at 2200 rpm for models MF 5710 SL, MF 5711 SL, MF 5712 SL, MF 5713 SL and 16.9R34 tires	1-12
1.2.2 Forward speed at 2200 rpm for models MF 5710 SL, MF 5711 SL, MF 5712 SL, MF 5713 SL and 18.4R38 tires	1-13
1.3 Dimensions and weights	1-15
1.3.1 Dimensions and weights	1-15
1.4 Attachment points	1-18
1.4.1 Attachment points	1-18
1.5 Capacities	1-20
1.5.1 Capacities	1-20
1.6 Tightening torques, retaining compounds and sealing products	1-21
1.6.1 Retaining compounds and sealing products	1-21
1.6.2 Tightening torques for screws and nuts	1-22
1.6.3 Tightening torques for hydraulic unions	1-26
1.7 Units of measurement	1-30
1.7.1 Conversion table	1-30

1.1 General specifications

1.1.1 Models MF 5700 SL

Engine				
Model	MF 5710 SL	MF 5711 SL	MF 5712 SL	MF 5713 SL
Brand	AGCO Power			
Type	44 AWFC			
Nominal power hp ISO (kW) at an engine speed of 2200 rpm	95 (70)	105 (77)	115 (85)	125 (92)
Maximum power hp ISO (kW) at an engine speed of 2000 rpm	100 (74)	110 (81)	120 (88)	130 (96)
Maximum PTO power HP SAE (kW) at an engine speed of 2000 rpm	81 (60)	90 (66)	101 (75)	109 (80)
Maximum torque, Nm	420 Nm	468 Nm	502 Nm	545 Nm
Displacement in liters	4.4			
Piston travel	120 mm			
Piston diameter	108 mm			
Compression ratio	17,4 bar: 1 bar			
Number of cylinders	4			
Idle speed, hand brake engaged	750 rpm			
Idle speed, hand brake disengaged	850 rpm			
Nominal speed	2100 rpm			
Maximum speed	2260 rpm			
Engine weight	430 kg			
High-pressure pump brand	Bosch			
High-pressure pump type	CB18			
Firing order	1-2-4-3			
Maximum pressure in the high-pressure system	1800 bar			
Injector brand	Bosch			
Injector type	CRI 2.2			
Charge pump type	Manual			
Fuel prefilter filtration capacity	10 μ			
Main fuel filter filtration capacity	5 μ			

Engine				
Model	MF 5710 SL	MF 5711 SL	MF 5712 SL	MF 5713 SL
Low-pressure system pressure at minimum speed	0,5 bar to 1 bar			
Low-pressure system pressure at maximum speed	0,5 bar to 1 bar			
Recommended oil:	API CJ4 or ACEA E9			
Maximum operating tilt (precautions)	25° pitch			
	20° roll			
Oil/fuel consumption	Maximum 0.2%			
Lubrication system	Gear pump			
Oil cooling system	Oil/water heat exchanger			
Oil pressure at minimum speed	1,5 bar			
Oil pressure at maximum speed	2,5 bar at 5 bar depending on the temperature			
Relief valve adjustment pressure	5 bar (spring pressure)			
Air suction type	Turbocharged with air/air intercooler			
Air preheating type	Grid heater with relay controlled by the ECU			
Number of valves	16			
Valve clearance value	0,35 mm (inlet and exhaust)			
Engine cooling system	Coolant			
Fan type	Vistronic			
Thermostat begins to open at	83 °C			
Coolant temperature	-35 °C to 106 °C			
Air compressor brand for the brake system	Knorr Bremse			
Type of compressor	Piston			
Pressure range:	6,5 bar to 8 bar			
Block preheater	110 or 220 volts			
Fuel preheater	Not available			
Urea preheater	Tank: coolant			
Exhaust fumes recirculation system	Pump module and supply lines: electric			
DOC + SCR system (DEF or AdBlue™ injection)	DOC with metal substrate (exhaust fumes oxidation catalyzer)			
	SCR Technology with ceramic substrate (exhaust fume treatment)			
Safety system	NOx sensors at exhaust inlet and outlet			

Engine				
Model	MF 5710 SL	MF 5711 SL	MF 5712 SL	MF 5713 SL
Device brand	Bosch Denox 2.2+			
Type of control	Engine controller EEM4			
Urea solidification temperature	-11 °C			
Oil vapor recirculation system	Closed system breather (CCV)			
Belt: Air conditioning compressor/ left-hand alternator	Poly V belt			
Belt: Fan/right-hand alternator	Poly V belt			
Belt: Air compressor	Poly V belt			

Rear axle transmission	
Gearbox type	Dyna-4 GBA25 or GBA25 Dyna-6
Number of ratios	4
Number of ranges	4 or 6
Number of gears	16/16 or 24/24
Super creeper gears	13.68/1
Number of gears with super creeper gears	32/32
Maximum speed	40 km/h
Rear axle type	GPA54
Number of pinion/crown wheel teeth	10/47
Rear axle ratio	25.179
4WD ratio	0.775
Final drive type	GPA54
Final drive reduction ratio	(61+14)/14
Maximum 4WD clutch torque	180 daNm
Number of 4WD disks	6 disks
Main brake type	Multidisc ball ramp
Number of disks per side	5
Braking pressure	-
Parking brake type	Hand brake
Trailer brake type	Hydraulic and/or pneumatic with built-in antifreeze pump
Pneumatic trailer braking pressure	6,9 bar to 8,3 bar

Rear axle transmission	
Hydraulic trailer braking pressure	0 to 150 bar
Maximum operating tilt - pitch (front/rear)	25°
Maximum operating tilt - roll (right/left)	22°
Maximum operating tilt - combined	22°
Total loaded weight supported by rear axle	4-wheel drive: 6400 kg
	2-wheel drive: 6000 kg

Two-wheel drive front axle	
Front axle brand	LODI 140 CP

Four-wheel drive front axle	
Brand	DANA
Supplier reference - suspended axle	730/563
Supplier reference - fixed axle	730/563
Suspended front axle weight	-
Fixed front axle weight	278 kg
Number of differential disks	-
Total ratio for fixed and suspended front axle	14.57
Axle type	Suspended or fixed
Total loaded weight supported by front axle	-
Rotational direction	Anti-clockwise
Recommended oil type (beam and final drive)	SAE85W90 (API GL4-MIL L-2105)
Ratio for fixed and suspended axle final drive	6
Number of pinion/crown wheel teeth	14/34
Maximum steering angle	4-wheel drive: 55°
	2-wheel drive: 52°
Oscillation angle	± 9°
Type of oscillation stop	Mechanical
Suspension type	Hydraulics
Suspension ram diameter	2 mm x 45 mm/35 mm
Suspension ram stroke	140 mm
Hydraulic control unit brand	Husco

Four-wheel drive front axle	
Hydraulic control unit nominal pressure	190 bar
Number of accumulators	2
Volume/pressure of accumulators	0,75 l: 70 bar
	2 l: 40 bar
Suspension sensor type	Angular potentiometer.
Steering sensor type	Angular potentiometer.
Brake type	Combined with the rear brake
Factor K	1.339

Spool valves	
System type	Open Center (OC) 57 l/min or 100 l/min Closed Center Load Sensing (CCLS) 110 l/min
Flow rate	57 l/min or 100 l/min (OC) 110 l/min (CCLS)
High-pressure pump type	Bosch Rexroth gear pump(s) (OC) Bosch Rexroth piston pump (CCLS)
High-pressure pump displacement	19 cm ³ (OC 57 l/min) 19 cm ³ + 14 cm ³ (OC 100 l/min) 45 cm ³ (CCLS)
High-pressure pump rotational speed	3042 rpm (OC)
	865 rpm (CCLS)
High-pressure pump maximum flow rate	57 l/min or 100 l/min (OC) 110 l/min (CCLS)
High-pressure pump maximum pressure	200 bar
Maximum quantity of oil to add for heavy implements	25 l
Maximum exportable oil quantity (without adding oil)	24 l
Maximum exportable oil quantity (adding oil)	49 l
Charge pump type	Suction (OC) 60 cm ³ gear pump (CCLS 110 l/min)
Main relief valve adjustment pressure	195 bar ± 5 bar (OC)
	197 bar ± 5 bar (CCLS)
Number of spool valves (maximum)	4

Spool valves	
Number of front "push-pull" connectors (maximum)	2
Number of rear "push-pull" connectors (maximum)	8
Maximum flow rate per spool valve	57 l/min or 100 l/min (OC) 100 l/min (CCLS)
Spool valve control type	Mechanical
Recommended oil:	According to MF CMS M 1145 specification

Steering	
Steering type	Hydrostatic
Type of control	Steering wheel
Orbitrol displacement	2-wheel drive: 80 cm ³
	4-wheel drive: 125 cm ³
Steering ram diameter	2-wheel drive: 63 mm x 36 mm
	4-wheel drive: 70 mm x 40 mm
Steering ram stroke	2-wheel drive: 2 x 80 mm
	4-wheel drive: 2 x 108 mm
Working pressure	170 bar - 175 bar
Pressure relief valve adjustment pressure	170 bar - 175 bar
Shock valve adjustment pressure	225 bar - 245 bar
Oil recommended for steering	According to MF CMS M1145 specification

Rear linkage	
Lift ram diameter	85 mm
Linkage travel	737 mm
Maximum lifting capacity at ball joints	4206 kg
Working pressure	180 bar
3-point linkage category	CAT3

Front linkage	
Lift ram diameter	80 mm x 40 mm
Linkage travel	695 mm
Maximum lifting capacity at ball joints	2236 kg
Working pressure	190 bar
3-point linkage category	CAT2

Live PTO	
Number of selections possible for rear PTO	540 540/540E 540/540E/1000
Maximum permissible power 540 in 1"3/8 (6 and 21 splines)	125 hp (92)
Maximum permissible power 540E in 1"3/8 (6 and 21 splines)	62.5 hp (46)
Maximum permissible power 1000 in 1"3/8 (6 and 21 splines)	125 hp (92)
Engine speed for 540 PTO	1920 rpm
Engine speed for 540E PTO	1560 rpm
Engine speed for 1000 PTO	1964 rpm
Rotational direction	Clockwise
Clutch type	Multidisc hydraulic
Number of clutch disks	4
Control pressure	21 bar
Splined shaft type	6 and 21 in 1"3/8

Front power take-off	
Number of selections possible for front PTO	1000 rpm
Maximum permissible power	Anti-clockwise: 128 hp (94 kW)
Maximum permissible input-output torque	Anti-clockwise: 449 Nm - 898 Nm
Rotational direction	anti-clockwise
Engine speed if PTO 1000	2000 rpm



Suggest:

For more complete manuals. Please go to the home page.

<https://www.ebooklibonline.com>

If the above button click is invalid. Please download this document first, and then click the above link to download the complete manual.

Thank you so much for reading

Front power take-off	
Ratio	2
Clutch type	Multidisc hydraulic
Splined shaft type	6 or 21 in 1"3/8

Electric	
Battery brand	TAB
Battery specifications (1 battery)	12 V - 105 A/h Type L5
Maximum current at start-up (SAE standard)	505A
Starter type	12 V Iskra
Starter power	3.2 KW
Alternator type	1 x 120 A or 1 x 175 A
Current available on ISOBUS connector	Not available

Electronics	
Instrument panel	IC1
3 Autotronic 5 DC	Transmission/linkage/suspended front axle
Lighting/linkage controller	Management of the lighting and of the rear linkage
1 EEM4 (ECM Tier 4f AGCO Power)	Engine and SCR Denox 2.2+ system
1 Orbitrol Danfoss valve	Auto-Guide™/ functionSpeedSteer
Datatron CCD	Onboard computer
Automatic air conditioning module	Air conditioning
CAN switches key pad	Controls for several tractor functions, such as 4WD, differential lock, high beam, Auto-Guide™, SpeedSteer.
AM50 unit	AgCommand™ (telemetry)

Cab and fittings	
Type of cab suspension available	Mechanical
Type of rear-view mirror control available	Manual or electric
Type of air conditioning control available	Manual or automatic
Type and brand of air conditioning compressor	SANDEN with axial pistons
Compressor displacement	154.9 cm ³ /rev.

Cab and fittings	
Refrigerant	R134a
Cab noise level	71 DBA
Roof type	Standard High-visibility Flat

<https://www.ebooklibonline.com>

Hello dear friend!

Thank you very much for reading.

Enter the link into your browser.

The full manual is available for immediate download.

<https://www.ebooklibonline.com>