

8400 Series Tractors

For models 8450 - 8460 - 8470 - 8480



AGCO - SA - Beauvais - France - RC B562 104 539
Massey Ferguson is a wholly owned subsidiary of AGCO Corporation

July 2005
N° 3378486M2
Issue 1
8400 EAME
English

OPERATOR INSTRUCTION BOOK

CONTENTS

<i>Chapter 1</i> TRACTOR IDENTIFICATION	1
<i>Chapter 2</i> INTRODUCTION - SAFETY INSTRUCTIONS AND WARRANTY	2
<i>Chapter 3</i> INSTRUMENTS AND CONTROLS	3
<i>Chapter 4</i> OPERATION	4
<i>Chapter 5</i> MAINTENANCE AND ADJUSTMENTS	5
<i>Chapter 6</i> SPECIFICATIONS	6
<i>Chapter 7</i> ACCESSORIES AND OPTIONS	7
<i>Appendix</i> CONVERSION TABLES	
<i>Index</i>	

1

2

3

4

5

6

7

Chapter 1
TRACTOR IDENTIFICATION

<https://www.ebooklibonline.com>

Hello dear friend!

Thank you very much for reading.

Enter the link into your browser.

The full manual is available for immediate download.

<https://www.ebooklibonline.com>

CONTENTS

1.1 - SERIAL NUMBER1.5



1 . TRACTOR IDENTIFICATION

1 . TRACTOR IDENTIFICATION

1.1 - SERIAL NUMBER

IMPORTANT: WHEN CONTACTING YOUR DEALER OR AGENT, ALWAYS INDICATE YOUR TRACTOR SERIAL NUMBER.

MODEL:

SERIAL NUMBER:

ENGINE SERIAL NUMBER:

OWNER NAME AND ADDRESS (if applicable):

DEALER:

STREET:

TOWN:

STATE:

ZIP CODE:

DEALER CODE:

Registration plate (according to country)



Z3A-1134-09-04

Fig. 1

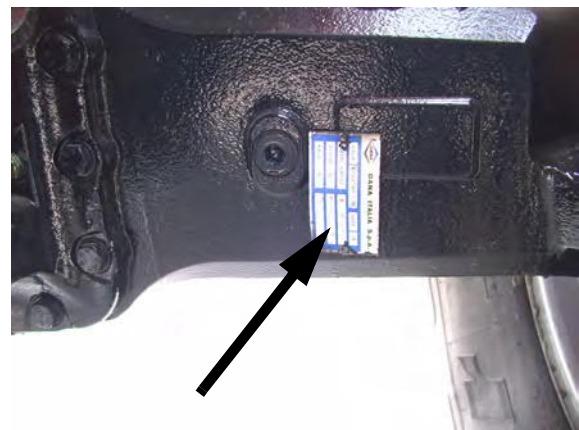
Name plate with serial number (according to country).



Z3A-1132-09-04

Fig. 2

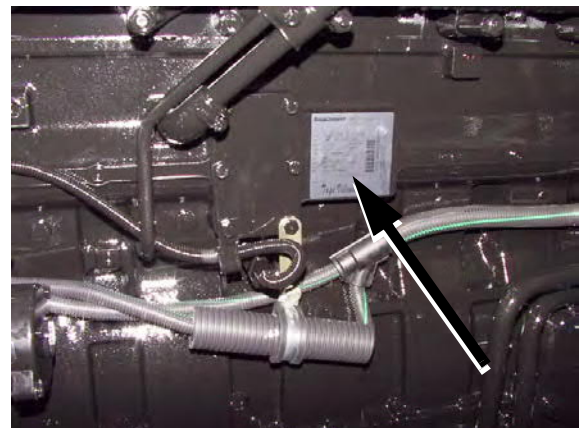
Front axle Serial number



Z3A-700-07-04

Fig. 3

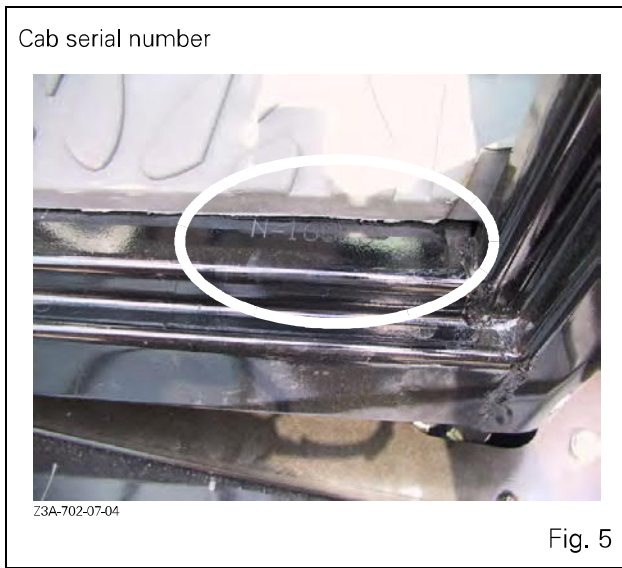
"Sisu" engine serial number



Z3A-701-07-04

Fig. 4

1. TRACTOR IDENTIFICATION



Chapter 2

**INTRODUCTION - SAFETY INSTRUCTIONS AND
WARRANTY**

2 . INTRODUCTION - SAFETY INSTRUCTIONS AND WARRANTY

CONTENTS

2.1 - INTRODUCTION.....	2.5
2.1.1 Pre-delivery inspection, commissioning at the user's premises and warranty.....	2.5
2.1.2 Warranty procedure.....	2.6
2.1.3 Using the tractor in another region.....	2.6
2.1.4 Servicing after the warranty period.....	2.6
2.2 - SAFETY - ALERT SYMBOLS AND TERMS.....	2.7
2.3 - TRACTOR AND IMPLEMENTS.....	2.7
2.4 - MAXIMUM TRAVEL SPEEDS.....	2.8
2.5 - NOTE TO THE OPERATOR.....	2.8
2.6 - DANGER, WARNING AND CAUTION.....	2.8
2.7 - DECALS.....	2.8
2.8 - SAFETY PROCEDURE TO FOLLOW.....	2.8
2.8.1 For proper operation.....	2.8
2.8.2 Observe the following instructions.....	2.9
2.9 - PROTECTION.....	2.9
2.9.1 Cab.....	2.9
2.9.2 Damage to the ROPS cab.....	2.9
2.10 - PREPARING FOR SAFE OPERATION.....	2.9
2.10.1 Know your equipment.....	2.9
2.10.2 Protect yourself.....	2.10
2.10.3 Use all available protective and safety devices.....	2.10
2.10.4 Equipment check.....	2.11
2.10.5 Clean the tractor.....	2.11
2.10.6 Protect the environment.....	2.12
2.11 - SERVICING THE TRACTOR.....	2.12
2.12 - STARTING.....	2.12
2.12.1 Warn personnel before starting.....	2.12
2.12.2 Get on and off the tractor safely.....	2.12
2.12.3 Safe start-up.....	2.12
2.12.4 Follow recommended start-up procedures.....	2.13
2.12.5 Controls test.....	2.13
2.12.6 Starting fluid.....	2.13
2.13 - WORKING SAFELY.....	2.13
2.13.1 Make the right moves.....	2.13
2.13.2 Safety instructions to be observed.....	2.13
2.13.3 Safety of bystanders.....	2.14
2.13.4 Risk of overturning.....	2.14
2.13.5 To avoid overturns.....	2.15
2.13.6 To avoid rear overturns.....	2.15
2.13.7 Emergency handbrake.....	2.16
2.13.8 Other risks.....	2.16
2.13.9 Implements and attachments.....	2.17
2.13.10 Tractor Towing.....	2.18
2.13.11 Limp home mode.....	2.19
2.13.12 Road use.....	2.20
2.13.13 Highway code.....	2.21
2.14 - SAFETY - AFTER OPERATION.....	2.21
2.15 - DESCRIPTION OF DECALS.....	2.22

2 . INTRODUCTION - SAFETY INSTRUCTIONS AND WARRANTY

2 . INTRODUCTION - SAFETY INSTRUCTIONS AND WARRANTY

2.1 - INTRODUCTION

The Safety chapter in the Operator Instruction Book stresses certain basic safety-related situations which may be encountered during the operation and normal servicing of the tractor and gives the information needed to cope with these situations. This chapter SUPPLEMENTS any safety instructions given in other chapters of this book.

It may be necessary to take additional precautions depending on the equipment used and the working conditions on the site or in the servicing area. AGCO can under no circumstances exercise direct control over the commissioning, operation, inspection, lubrication or servicing of the tractor. It is therefore YOUR responsibility to take suitable safety measures in such areas.

NOTE: *This book is published and distributed worldwide and the availability of the equipment indicated, whether on the basic tractor or as accessories, may vary according to the country in which the tractor is used. To find out which equipment is available in a given region, contact an AGCO dealer.*

The purpose of this book is to allow the owner and the operator to run the tractor safely. Providing they follow the instructions carefully, the tractor will operate for many years in the AGCO tradition.

Commissioning the equipment at the user's by the dealer provides the possibility of ensuring that these operating and servicing instructions are properly understood. Always consult the dealer if any part of this book is not understood. It is important for these instructions to be understood and followed.

Daily maintenance should become a routine and a log book of operating hours should be kept.

When new spare parts are required, it is important to use AGCO original spare parts only. AGCO dealers supply only genuine original parts and can give advice concerning their fitting and use.

The use of parts of lower quality may cause serious damage. Customers are advised to only purchase their spare parts from an approved AGCO dealer.

Due to the considerable differences in operating conditions, it is not possible for the manufacturer to formulate complete or absolute assertions in its publications concerning the performance or operating methods of its machines or accept liability for any loss or damage which may result from such assertions or possible errors or omissions.

To prevent the warranty becoming void, you should consult your AGCO dealer to obtain special instructions if the tractor is to be used under abnormal conditions which could be detrimental to it (use in deep water or in paddy fields for instance).

These tractors are only designed for usual farming purposes (designed use).

Any other use is considered as being contrary to the designed use. AGCO declines all liability in cases of physical damage or injuries resulting from improper use the consequences of which shall be borne by the user alone.

The conformity and strict adherence to the operating, servicing and repair requirements specified by AGCO are also essential factors for designed use.

These tractors must only be used, serviced and repaired by personnel having full knowledge of their specific features

and who are aware of the applicable safety rules (prevention of accidents).

Customers are strongly recommended to contact an AGCO dealer in the event of after-sale problems and for any adjustments which may be necessary.

2.1.1 - Pre-delivery inspection, commissioning at the user's premises and warranty

When selling new products to their dealers, the manufacturer gives a warranty which, subject to certain conditions, guarantees that the goods are free from material and workmanship defects. Since this book is published worldwide, it is impossible to detail the exact terms and conditions of warranty that apply to a retail customer in any particular country.

Purchasers of new AGCO equipment should request full details from their supplying Dealer.

In accordance with the Corporation's policy of continuous improvement to its products, alterations in the specifications of machines may be made at any time without notice. The Corporation disclaims all liability for discrepancies which may occur between the specifications of its products and the descriptions thereof contained in its publications.

A Dealer is required to carry out certain activities when supplying a new AGCO tractor. These consist of a full pre-delivery inspection to ensure that the tractor supplied is ready for immediate use, and full instructions to the user in the basic principles of operation and servicing of the tractor. These instructions will cover instruments and controls, and routine servicing and safety precautions. All persons who will be concerned with the operation and servicing of the tractor should be present for these instructions.

NOTE: *AGCO disclaims all liability to any claim resulting from the fitting of non-approved parts, accessories, implements or equipment or unauthorized modification or alteration.*

2 . INTRODUCTION - SAFETY INSTRUCTIONS AND WARRANTY

2.1.2 - Warranty procedure

Correct commissioning at the user's premises and routine servicing contribute to preventing breakdowns. However, if operating problems do occur during the warranty period, follow this procedure:

Immediately inform the dealer you purchased the tractor from, indicating the model and serial number. It is very important not to wait and it should be realised that, even if the defect is covered by the original warranty, the risk coverage may no longer apply if the repair is not carried out immediately.

Provide the dealer with as much information as possible. The dealer will need to know how many hours the tractor has been in service, what type of work it is used for and the symptoms of the problem.

It should be noted that routine servicing operations such as tuning, brake and clutch adjustment, and the supplies used for the tractor servicing (oil, filters, fuel and antifreeze) are not covered by the warranty.

Warning concerning spare parts

Parts other than AGCO parts are likely to be of lower quality. AGCO disclaims all liability in the event of loss or damage arising as a result of such parts being fitted. The manufacturer's warranty may also become void, if such parts are fitted during the normal warranty period.

2.1.3 - Using the tractor in another region

Only the AGCO dealer from whom the tractor was purchased is liable for the protection provided by the warranty. Any repairs required should always, wherever possible, be carried out by this dealer. If, however, the owner moves to another region or if the tractor is to be used temporarily a long way from the dealer it was bought from, it is recommended to ask this dealer for the name and address of the AGCO dealer nearest the customer's new address and arrange to have the obligations remaining to be fulfilled under the warranty transferred to this dealer.

If the customer leaves the region covered by the original dealer without having taken these steps, the new dealer will offer its services if need be, but may bill them at the normal rate unless:

- the user has effectively specified that the warranty period has not expired and,
- the repair dealer has been given the possibility of taking the necessary steps with the selling dealer.

2.1.4 - Servicing after the warranty period

During the warranty period, all maintenance and repair work must be carried out by the AGCO dealer who will carefully carry out detailed checks of the progress and performance of the new tractor.

To obtain best results from an AGCO tractor, it is important to continue regular servicing and periodic inspection after the warranty has expired. All major overhaul work on the tractor must be carried out by a local AGCO dealer; an experienced technician will detect any problems which may arise between two overhauls.

Mechanical staff regularly follow training courses to update their knowledge of the product, maintenance and repair techniques and the use of special modern tools and equipment for troubleshooting. They receive regular Service Bulletins and have access to all the workshop manuals and technical publications required to carry out repairs or maintenance meeting the quality standards required by AGCO.

2 . INTRODUCTION - SAFETY INSTRUCTIONS AND WARRANTY

2.2 - SAFETY - ALERT SYMBOLS AND TERMS

This Safety Alert Symbol means CAUTION!
BE ALERT! YOUR SAFETY DEPENDS ON IT!



The safety alert symbol identifies important safety messages on machines, safety signs, in manuals, or elsewhere. When you see this symbol, be alert to the risk of personal injury or death. Follow the instructions in the safety message.

SAFETY is essential! Why?

- ACCIDENTS DISABLE AND KILL
- ACCIDENTS ARE COSTLY
- ACCIDENTS CAN BE AVOIDED

2

2.3 - TRACTOR AND IMPLEMENTS

The tractor is a source of power - Mechanical - Hydraulic

- On its own, the tractor is of little practical value. Only when used in conjunction with an implement or other attachment does it become a working unit.
- This Operator Instruction Book is compiled to cover the safe working practices when the tractor runs under normal conditions.
- It does not cover all operation and safety instructions relevant to all known implements and attachments that may be fitted at the time of tractor delivery or later.
- It is essential that operators use and understand the relevant instruction books of such implements and attachments.

2 . INTRODUCTION - SAFETY INSTRUCTIONS AND WARRANTY

2.4 - MAXIMUM TRAVEL SPEEDS



DANGER: Road use of agricultural tractors is subject to speed restrictions depending on the bulkiness of the equipment and weight of the transported load. Consult the regulatory texts in force in the relevant countries.

2.5 - NOTE TO THE OPERATOR

It is YOUR responsibility to read and understand the Safety chapter in this book before starting your tractor. You must follow these safety instructions that take you step by step through your working day.

In reading this section, you will note that illustrations have been used to highlight certain situations. Each item illustrated is numbered and the same number appears in the text, in parentheses. This number is placed at the end of the written text that refers to the item illustrated.

Remember that YOU are the key to safety. Good safety practices not only protect you, but also bystanders. Study the features in this book with care and make them a working part of your safety program. Keep in mind that this safety chapter is written only for this type of machine. Also study the usual protective measures taken when working and in particular -

REMEMBER THAT SAFETY DEPENDS ON YOU. YOU CAN PREVENT SERIOUS INJURY OR DEATH.

2.6 - DANGER, WARNING AND CAUTION

Whenever you see the words and symbols shown below, used in this book and on decals, you MUST apply their instructions as they relate to personal safety.



DANGER: This signal, displayed with the word **DANGER**, indicates an imminently hazardous situation that, if not avoided, may result in **DEATH OR VERY SERIOUS INJURY**.



WARNING: This signal, displayed with the word **WARNING**, indicates a potentially hazardous situation that, if not avoided, may result in **DEATH OR VERY SERIOUS INJURY**.



CAUTION: This signal, displayed with the word **CAUTION**, indicates a potentially hazardous situation that, if not avoided, may result in **MINOR INJURY**.

IMPORTANT: Indicates a special instruction or procedure that, if not strictly observed may cause damage to, or destruction of the machine, the process, or the surroundings.

NOTE: The word **NOTE** indicates additional information about a subject or procedure for more efficient or convenient operation or repair.

2.7 - DECALS



WARNING: DO NOT remove or obscure DANGER, WARNING, CAUTION or Instruction Decals.

Replace any Danger, Warning, Caution or Instruction Decals that are not readable or are missing. Replacement decals are available from your Dealer in the event of loss or damage. The actual location of these Safety decals is illustrated at the end of this chapter.

If a used tractor has been purchased, refer to the illustrations at the end of this book to ensure that all the safety signs are in the correct position and are readable.

2.8 - SAFETY PROCEDURE TO FOLLOW

2.8.1 - For proper operation

For proper operation of an agricultural tractor, you must be a qualified and approved operator. To be qualified you must understand the written instructions supplied in this book, have been trained, and know the safety rules and regulations applicable to the work.

Some regulations specify that no one under the age of 16 years, for example, may operate power machinery. This includes tractors. It is your responsibility to know what these regulations are, and obey them, in the operating area or situation.

These will include, but are not limited to, the following instructions for safe tractor operation.



WARNING: The operator must not drink alcohol or take any medication that may affect his concentration or coordination. If taking medication, whether prescribed or not, the operator must seek medical advice as regards his ability to safely operate machinery.

2 . INTRODUCTION - SAFETY INSTRUCTIONS AND WARRANTY

2.8.2 - Observe the following instructions

- **DO NOT ALLOW** children or unqualified persons to operate your tractor. Keep others away from the working area.
- Always wear your seat belt securely fastened.
- Where possible, avoid operating the tractor near ditches, embankments and holes. Reduce speed when turning, crossing slopes, and on rough, slippery, or muddy surfaces.
- Stay off slopes too steep for safe operation.
- Watch where you are going, especially at row ends, on roads, and around trees.
- Instructor seat is only intended for short periods of use
- Do not allow children in the instructor seat.
- **DO NOT PERMIT** others to ride on the tractor or the implement unless an approved instructor seat is fitted.
- Only hitch attachments and implements to the drawbar and hitch points recommended, and never above the centre line of the rear axle.
- Operate the tractor smoothly - no jerky turns, starts or stops. When the tractor is stopped, apply the parking brake securely. Lower the implement and remove the ignition key.
- **DO NOT MODIFY OR REMOVE** any part of the equipment and **DO NOT USE** attachments unless they are properly matched to your tractor.

2.9 - PROTECTION

2.9.1 - Cab

The ROPS (Roll Over Protective Structure) cab has been designed for this tractor series and meets all the safety and sound legal requirements.

The ROPS cab conforms to the various international safety standards. The ROPS cab must **NEVER** be drilled or modified to install accessories or implements. Welding on cab components is **NOT PERMITTED. DO NOT ATTACH** chains or ropes to the main frame of the ROPS cab for pulling purposes.

If additional controls or displays are to be added to the operator's area contact your AGCO dealer for information.

The ROPS cab together with the seat belt is effective in reducing injuries during overturn accidents. Wearing the seat belt is an important part of this protection.

- Always wear your seat belt adjusted snugly.
- Check the seat belt for damage. A damaged seat belt must be replaced (Fig. 1).



Fig. 1

2.9.2 - Damage to the ROPS cab

If the ROPS cab has been damaged as a result of tractor rollover or incident, it must be replaced, NOT repaired. **DO NOT USE** the tractor with a damaged ROPS cab.

2.10 - PREPARING FOR SAFE OPERATION

2.10.1 - Know your equipment

It is important to know the tractor and operation of all its accessories, implements and additional equipment. It is also important to know how to use all the controls, gauges and dials, as well as the rated load capacity, speed range, braking and steering characteristics, turning radius, and operating clearances.

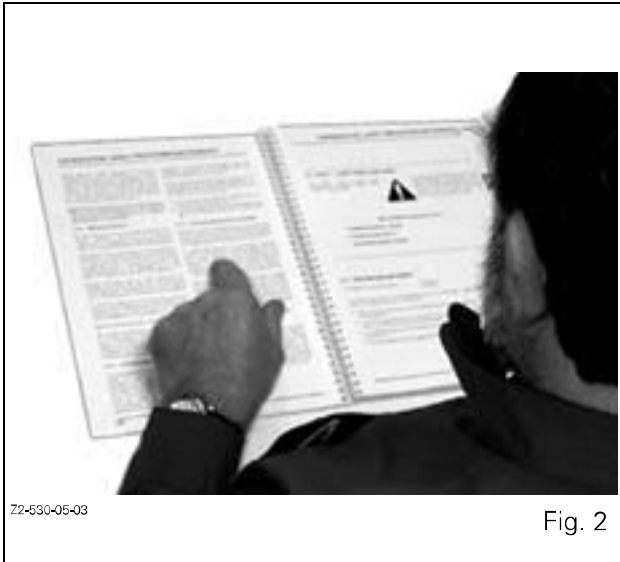
Remember that rain, snow, ice, loose gravel, soft ground, etc. can change the performance of your tractor.

Under poor conditions, slow down and be extra careful, and engage four-wheel drive if fitted.

Study the **DANGER, WARNING** and **CAUTION** safety symbols on your tractor and the information signs also.

2 . INTRODUCTION - SAFETY INSTRUCTIONS AND WARRANTY

READ THIS OPERATOR INSTRUCTION BOOK CAREFULLY BEFORE STARTING THE ENGINE. STUDY IT BEFORE YOU START WORK (Fig. 2).



IF THERE IS SOMETHING IN THE BOOK YOU DON'T UNDERSTAND, ASK SOMEONE (for example your equipment dealer) TO EXPLAIN IT TO YOU.

This book covers general safety practice for agricultural tractors. It must always be kept with the tractor. For further copies contact your AGCO Dealer.

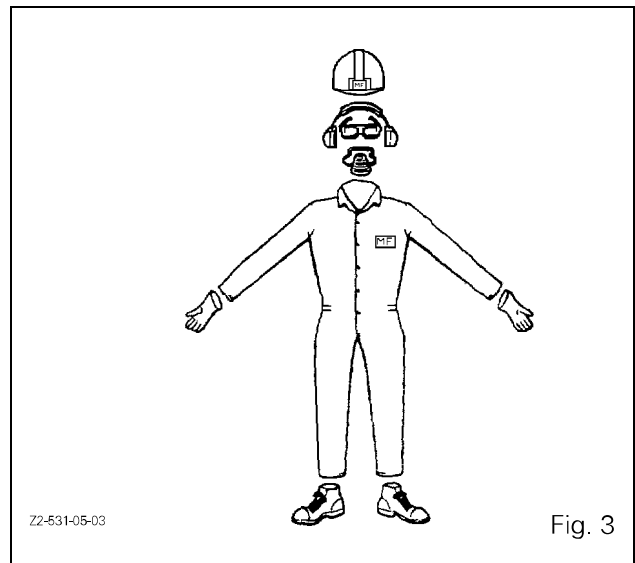
2.10.2 - Protect yourself

Wear all protective clothing and equipment provided or which is appropriate for certain working conditions. Do not take any risks (Fig. 3).

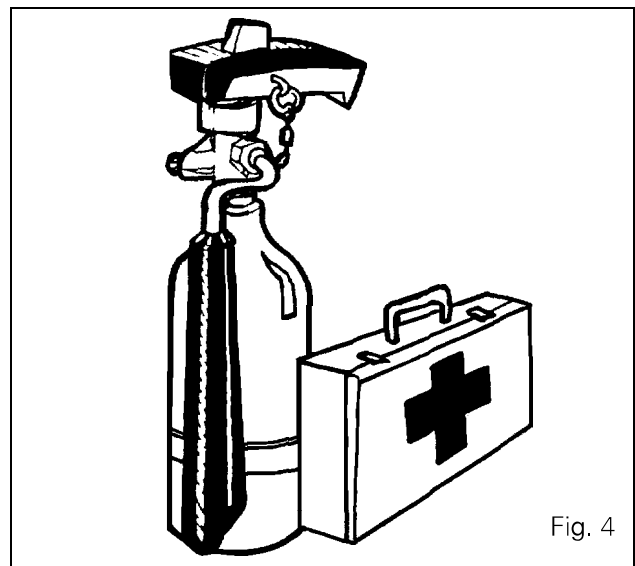
For example, you may need:

- A safety helmet.
- Safety glasses, goggles, or a face shield.
- Hearing protection.
- Respirator or filter mask.
- Inclement weather clothing.
- Reflective clothing.
- Heavy gloves (neoprene for chemicals, leather for rough work).
- Safety shoes.

DO NOT wear loose clothing, jewellery or other items and tie up long hair which could catch on controls or other parts of the equipment.



Learn where fire extinguishers and first aid or emergency equipment is kept and where to get help in a hurry. Make sure you know how to use this equipment (Fig. 4).



2.10.3 - Use all available protective and safety devices

Keep all protective devices correctly attached in their correct places. Ensure that all protective devices, guards and safety signals are fitted as required and are in a good condition.

To help keep you and others around you safe, your tractor should be equipped with:

- Seat belt
- PTO shield

Your tractor may also need:

- Rear view mirror
- Fire extinguisher
- Emergency warning triangle, guards, backup alarm, lighting devices and decals.

It is important to know and use the devices which allow for safe operation of the tractor. Make sure all required equip-



Suggest:

For more complete manuals. Please go to the home page.

<https://www.ebooklibonline.com>

If the above button click is invalid. Please download this document first, and then click the above link to download the complete manual.

Thank you so much for reading

2 . INTRODUCTION - SAFETY INSTRUCTIONS AND WARRANTY

ment is in place and in good working order. **DO NOT REMOVE OR DISCONNECT** any safety device.

2.10.4 - Equipment check

Before you begin your working day, take time to check your tractor and ensure that all systems are in good operating condition.

- **DO NOT SMOKE** while refuelling the tractor. Keep any type of naked flame away (Fig. 5).
- Stop the engine and wait for it to cool before refuelling.

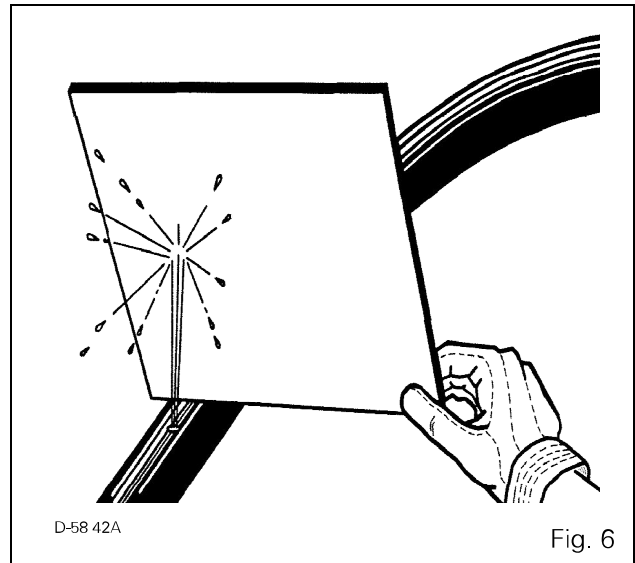


- Check for loose, broken, missing, or damaged parts. Have everything put into good repair. Make certain all safety devices are in place.
- Check the seat belt for damage. A damaged seat belt must be replaced.
- Check that all implements and equipment are correctly fitted and that the tractor and implement PTO ratios (rpm) are respected.
- Check the condition and pressure of tyres (absence of cuts and bulges). Replace worn or damaged tyres. Check the hand and foot brake operation. Adjust if necessary.
- Check the oil level. Add some oil if necessary.
- Perform all servicing procedures outlined in the Maintenance and Adjustments chapter in this book.
- Check that the PTO shaft locking devices are latched.
- Check that the tractor PTO shield and shaft guards are in place and operating properly.
- Check the tractor and implement hydraulic system. Have any leaks or damaged parts repaired or replaced.



WARNING: Diesel fuel or hydraulic fluid under pressure can penetrate the skin or eyes and cause serious personal injury, blindness or death.

Fluid leaks, under pressure, may not be visible. Use a piece of cardboard or wood to detect leaks. DO NOT USE YOUR BARE HANDS. Wear safety goggles for eye protection. If any fluid is injected into the skin, it MUST be surgically removed within a few hours by a doctor familiar with this type of injury (Fig. 6).



Before applying pressure to the fuel or hydraulic system, be sure all connections are tight and that lines, pipes, and hoses are not damaged. Before disconnecting fuel or hydraulic lines, be sure to relieve all pressure.

Make sure that all hydraulic lines are correctly installed and not crossed.



WARNING: Liquid cooling systems build up pressure as the engine gets hot. Before removing the radiator cap, stop the engine and let the system cool.

- Check the engine cooling system and add coolant as required.

2.10.5 - Clean the tractor

- Keep work surfaces and engine compartments clean.
- Before cleaning the machine, always lower implements to the ground, place transmission in neutral, engage the parking brake, shut off the engine and remove the ignition key.
- Clean footsteps, pedals and floor. Remove grease or oil. Brush away dust or mud. In winter, scrape away snow and ice. Remember - slippery surfaces are hazardous.
- Remove or put away implements, buckets, chains and hooks.

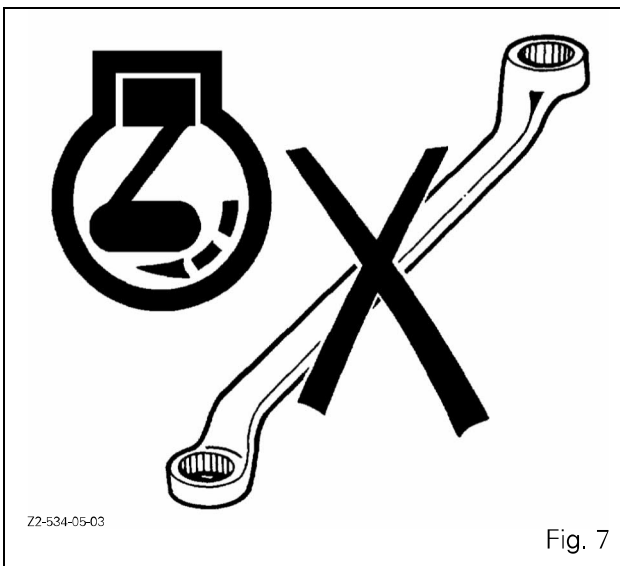
2 . INTRODUCTION - SAFETY INSTRUCTIONS AND WARRANTY

2.10.6 - Protect the environment

- It is illegal to pollute drains, water courses or soil. Use authorized waste disposal facilities, including civic amenity sites and garages providing facilities for disposal of used oil. If in doubt, contact your local authority for advice.

2.11 - SERVICING THE TRACTOR

- **DO NOT SERVICE** the tractor while the engine is running or hot, or if the tractor is in motion (Fig. 7).



- Before making adjustments to or servicing the electrical system, disconnect the battery cables, negative (-) cable first.
- To prevent fires or explosions keep open flame away from the battery or cold weather starting aids. To prevent sparks which could cause explosions use jumper cables according to instructions.
- When making repairs or adjustments it is recommended that you consult your AGCO Dealer, and have the work carried out by trained personnel.
- The implement and/or tractor must be supported on suitable blocks or stands, **NOT** a hydraulic jack.
- Check all nuts and bolts periodically for tightness, especially wheel hub and rim nuts. Tighten to the prescribed torque values.

2.12 - STARTING

2.12.1 - Warn personnel before starting

Before starting, walk completely around the tractor and any attached equipment. Make sure that no one is under it, on it, or close to it. Tell other workers or people nearby that the tractor is about to start. Do not start the tractor while there are people near the tractor, tools or trailed implements.

Ensure that all bystanders, particularly children, are a suitable distance away before starting the engine.

2.12.2 - Get on and off the tractor safely

Always use "three point contact" with the machine, and face the machine when you get on it. (Three point contact means both hands and one foot or one hand and both feet are in contact with the machine at all times when getting on and off).

Clean your shoes and wipe your hands before getting on. Use handrails, grab handles, ladders or footsteps (as provided) when getting on and off.

DO NOT use control levers as a hand hold and never step on pedals when getting on and off.

DO NOT attempt to get on or off a moving tractor. **DO NOT JUMP OFF** a tractor other than in an emergency.

2.12.3 - Safe start-up



WARNING: Before starting the engine make sure there is plenty of ventilation. **DO NOT operate the engine in a closed building. The exhaust fumes may cause asphyxiation.**

Always start the engine from the operator's seat **with all the transmission levers** and the PTO lever in neutral.

Make sure that the tractor dual brake pedals are locked together at all times unless you are making turns in the field which require independent use of the brakes. Make sure the brakes are properly adjusted so that both brakes engage at the same time.

Adjust the seat, fasten the seat belt (as specified in the book), apply the parking brake and put all controls in neutral before starting up.



DANGER: Start the engine, with the ignition key, from the operator's seat only. **DO NOT ATTEMPT to start the engine by shorting across the starter terminals. The machine will start in gear if the neutral start circuit is bypassed. This could cause serious injury or death to anyone in the vicinity of the tractor (Fig. 8).**

<https://www.ebooklibonline.com>

Hello dear friend!

Thank you very much for reading.

Enter the link into your browser.

The full manual is available for immediate download.

<https://www.ebooklibonline.com>