

## CALIFORNIA

### Proposition 65 Warning

**WARNING:** Diesel engine exhaust and some of its constituents are known to the State of California to cause cancer, birth defects, and other reproductive harm.

**WARNING:** Battery posts, terminals and related accessories contain lead and lead compounds, chemicals known to the State of California to cause cancer, birth defects, and other reproductive harm. **Wash hands after handling.**

# 8400 Series Tractors

*For models 8450 - 8460 - 8470 - 8480 Dyna-VT*



---

## CONTENTS

<i>Chapter 1</i> <b>TRACTOR IDENTIFICATION</b>	<b>1</b>
<i>Chapter 2</i> <b>INTRODUCTION - SAFETY INSTRUCTIONS AND WARRANTY</b>	<b>2</b>
<i>Chapter 3</i> <b>INSTRUMENTS AND CONTROLS</b>	<b>3</b>
<i>Chapter 4</i> <b>OPERATION</b>	<b>4</b>
<i>Chapter 5</i> <b>SERVICING AND ADJUSTMENTS</b>	<b>5</b>
<i>Chapter 6</i> <b>SPECIFICATIONS</b>	<b>6</b>
<i>Chapter 7</i> <b>ACCESSORIES AND OPTIONS</b>	<b>7</b>
<i>Appendix</i> <b>CONVERSION TABLES</b>	
<i>Index</i>	

1

2

3

4

5

6

7

*Chapter 1*  
**TRACTOR IDENTIFICATION**

**<https://www.ebooklibonline.com>**

Hello dear friend!

Thank you very much for reading.

Enter the link into your browser.

The full manual is available for immediate download.

**<https://www.ebooklibonline.com>**

**CONTENTS**

1.1 - SERIAL NUMBER .....1.5



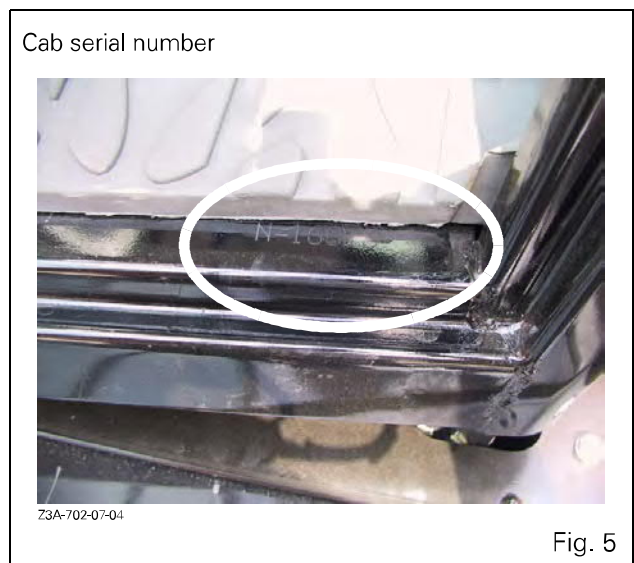
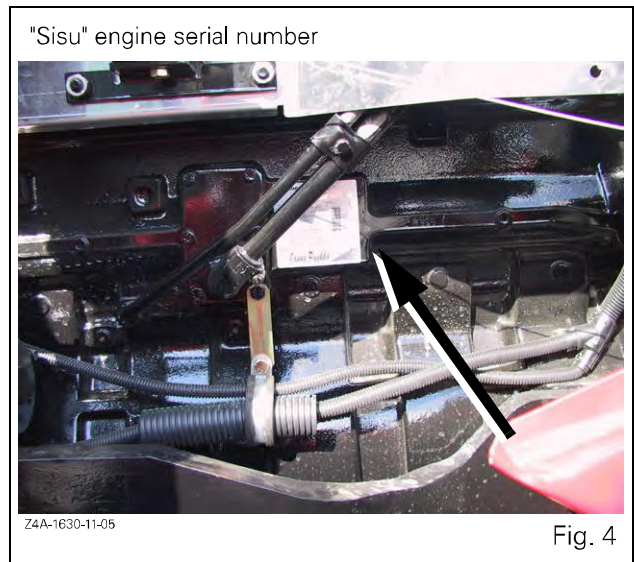
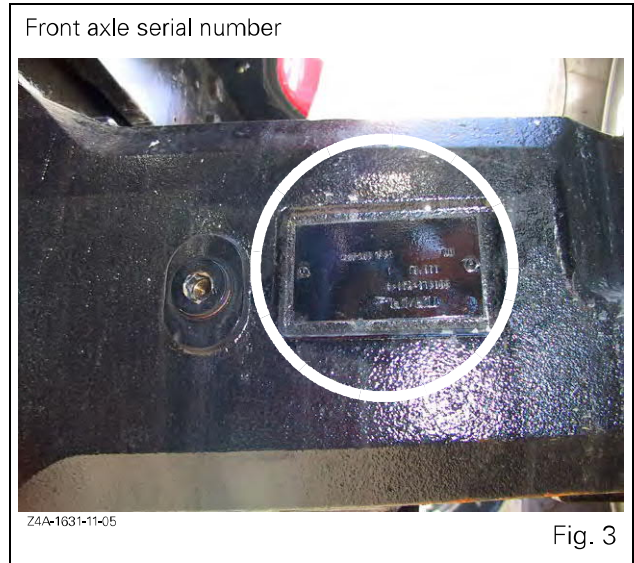
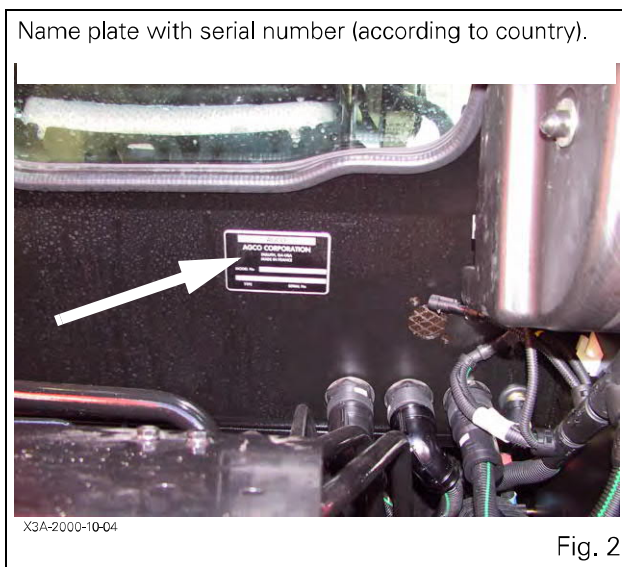
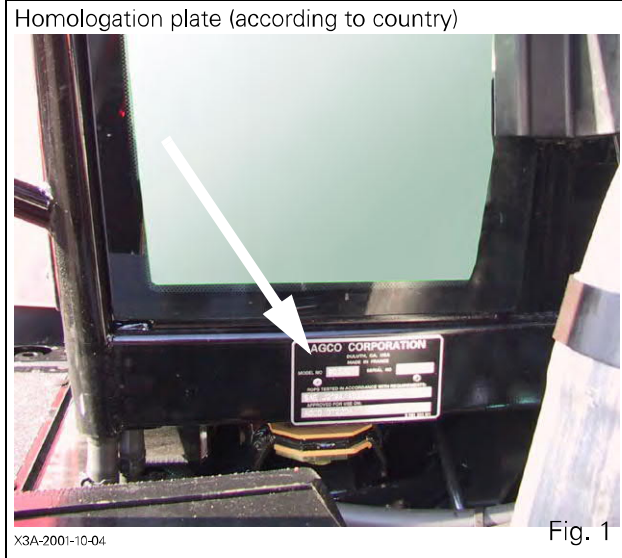
## **1 . TRACTOR IDENTIFICATION**

---

# 1 . TRACTOR IDENTIFICATION

## 1.1 - SERIAL NUMBER

**IMPORTANT: PLEASE QUOTE THE SERIAL NUMBER OF YOUR TRACTOR IN ALL CORRESPONDENCE WITH YOUR DEALER OR AGENT.**



# 1 . TRACTOR IDENTIFICATION

---

MODEL:.....  
.....

SERIAL NUMBER:.....  
.....

ENGINE SERIAL NUMBER:.....  
.....

OWNER NAME AND ADDRESS (if applicable):  
.....  
.....  
.....  
.....  
.....

DEALER:.....  
.....  
.....

STREET:.....

TOWN:.....

COUNTY:.....

POSTCODE:.....

DEALER CODE:.....  
.....

TRACTOR RECEIVED FROM:  
(tick one of the following)

.....FACTORY

.....  
OTHER DEALER (transfer):

*Chapter 2*

**INTRODUCTION - SAFETY INSTRUCTIONS AND  
WARRANTY**

## 2 . INTRODUCTION - SAFETY INSTRUCTIONS AND WARRANTY

---

### CONTENTS

2.1 - INTRODUCTION.....	2.5
2.1.1 Pre-delivery inspection, commissioning on the user's premises and warranty.....	2.5
2.1.2 Warranty procedure.....	2.6
2.1.3 Using the tractor in another region.....	2.6
2.1.4 Servicing after expiry of the warranty period.....	2.6
2.2 - SAFETY — SYMBOLS AND TERMS.....	2.7
2.3 - TRACTOR AND IMPLEMENTS.....	2.7
2.4 - MAXIMUM TRAVEL SPEEDS.....	2.7
2.5 - NOTE TO THE USER.....	2.8
2.5.1 This Book must be kept with the tractor at all times.....	2.8
2.5.2 Safety.....	2.8
2.6 - DECALS DANGER, WARNING AND CAUTION.....	2.8
2.6.1 Decals.....	2.8
2.7 - SAFETY PROCEDURE.....	2.9
2.7.1 Ensuring proper operation.....	2.9
2.7.2 Observe the following instructions.....	2.9
2.8 - PROTECTION.....	2.9
2.8.1 Cab.....	2.9
2.8.2 Roll Over Protection Structure (ROPS).....	2.9
2.9 - PREPARING FOR SAFE OPERATION.....	2.11
2.9.1 Know your equipment.....	2.11
2.9.2 Protect yourself.....	2.11
2.9.3 Use all available protective and safety devices.....	2.12
2.9.4 Equipment check.....	2.12
2.9.5 Clean the tractor.....	2.13
2.9.6 Protect the environment.....	2.13
2.10 - SERVICING THE TRACTOR.....	2.13
2.11 - STARTING UP.....	2.14
2.11.1 Warn personnel before starting up.....	2.14
2.11.2 Mount and dismount the tractor safely.....	2.14
2.11.3 Start up safely.....	2.14
2.11.4 Follow recommended start-up procedures.....	2.14
2.11.5 Test the controls.....	2.14
2.11.6 Starter fluid.....	2.14
2.12 - WORKING SAFELY.....	2.15
2.12.1 Make the right moves.....	2.15
2.12.2 Safe operating practices.....	2.15
2.12.3 Safety of bystanders.....	2.15
2.12.4 Risk of overturning.....	2.16
2.12.5 To avoid overturning.....	2.17
2.12.6 Preventing rear overturns.....	2.17
2.12.7 Emergency hand brake.....	2.18
2.12.8 Other risks.....	2.18
2.12.9 Implements and attachments.....	2.19
2.12.10 Tractor towing.....	2.20
2.12.11 Road use.....	2.20
2.12.12 Highway code.....	2.20

## **2 . INTRODUCTION - SAFETY INSTRUCTIONS AND WARRANTY**

---

2.13 - SAFETY – AFTER OPERATION .....	2.21
2.14 - DESCRIPTION OF DECALS .....	2.22

## 2 . INTRODUCTION - SAFETY INSTRUCTIONS AND WARRANTY

### 2.1 - INTRODUCTION

The Safety chapter in the Operator Instruction Book highlights certain basic safety-related situations which may be encountered during the operation and normal servicing of the tractor and provides the information needed to handle these situations. This chapter SUPPLEMENTS any safety instructions given in other chapters of this book.

It may be necessary to take additional precautions, depending on the attachments used and the working conditions on-site or in the servicing area. AGCO can under no circumstances exercise direct control over the commissioning, operation, inspection, lubrication or servicing of the tractor. It is therefore YOUR responsibility to take suitable safety precautions in such areas.

**NOTE:** *This book is published and distributed worldwide and the availability of the attachments indicated, whether on the basic tractor or as accessories, may vary according to the country in which the tractor is used. To find out which attachments are available in a given region, contact an AGCO dealer.*

The purpose of this book is to allow the owner and the operator to run the tractor safely. Providing they follow the instructions carefully, the tractor will give many years of service in the AGCO tradition.

Commissioning the equipment on the user's premises enables the dealer to ensure that these operating and servicing instructions are properly understood. Always consult the dealer if there is any part of this book that you do not understand. It is important that these instructions are understood and followed.

Daily servicing should become a routine, and a logbook of operating hours should be kept.

When spare parts are required, it is important to use only genuine AGCO parts. AGCO dealers supply genuine parts and can offer advice concerning their fitting and use.

The use of lower quality parts may cause serious damage. Customers are advised only to purchase their spare parts from an approved AGCO dealer.

Owing to the considerable variation in operating conditions, it is not possible for the manufacturer to formulate complete or absolute assertions in its publications concerning the performance or operating methods of its machines or to accept liability for any loss or damage which may result from such assertions or possible errors or omissions.

If the tractor is to be used in abnormal conditions which could cause damage (use in deep water or in paddy fields for instance), you should consult your AGCO dealer to obtain special instructions to prevent the warranty from becoming void.

These tractors are designed only for usual farming activities (intended use).

Use for any other activity is considered to be contrary to the intended use. AGCO disclaims all liability in the event of material damage or physical injury resulting from improper use, the consequences of which shall be borne by the user alone.

Compliance with and strict adherence to the operating, servicing and repair requirements specified by AGCO are also essential elements of the intended use.

These tractors must only be used, serviced and repaired by personnel who have full knowledge of their specific features and are aware of the applicable safety rules (prevention of accidents).

Customers are strongly advised to contact an AGCO dealer in the event of after-sale problems and for any adjustments which may be necessary.

#### 2.1.1 - Pre-delivery inspection, commissioning on the user's premises and warranty

When selling new products to its dealers, the manufacturer provides a warranty which, subject to certain conditions, guarantees that the goods are free from defects in material and workmanship. Since this book is published worldwide, it is impossible to detail the exact terms and conditions of warranty that apply to all retail customers in all countries.

Purchasers of new AGCO equipment should therefore request full details from their supplying dealer.

In accordance with the manufacturer's policy of continuous improvement of its products, the manufacturer reserves the right to make alterations to the specifications of machines at any time without notice. The manufacturer disclaims all liability for discrepancies which may occur between the specifications of its products and the descriptions thereof contained in its publications.

The dealer is required to carry out certain activities when supplying a new AGCO tractor. These consist of carrying out a full pre-delivery inspection to ensure that the tractor supplied is ready for immediate use, and providing full instructions to the user on the basic principles of operation and servicing of the tractor. These instructions will cover instruments and controls, and routine servicing and safety precautions. All persons who will be involved in the operation and servicing of the tractor should be present when these instructions are given.

**NOTE:** *AGCO disclaims all liability in the event of any claim resulting from the fitting of non-approved parts, accessories, implements or attachments or unauthorised modifications or alterations.*

## **2 . INTRODUCTION - SAFETY INSTRUCTIONS AND WARRANTY**

---

### **2.1.2 - Warranty procedure**

Correct commissioning on the user's premises and routine servicing help to prevent breakdowns. However, if operating problems do occur during the warranty period, follow this procedure:

Immediately inform the dealer you purchased the tractor from, stating the model and serial number. It is very important not to delay, as even if the defect is covered by the original warranty, the coverage may no longer apply if the repair is not carried out immediately.

Provide the dealer with as much information as possible. The dealer will need to know how many hours the tractor has been in service, what type of work it is used for and the symptoms of the problem.

It should be noted that routine servicing operations such as tuning, brake and clutch adjustment, and the supplies used for the tractor servicing (oil, filters, fuel and antifreeze) are not covered by the warranty.

### **Warning concerning spare parts**

Parts other than AGCO parts are likely to be of lower quality. AGCO disclaims all liability in the event of loss or damage arising as a result of such parts being fitted. The manufacturer's warranty may also become void if such parts are fitted during the normal warranty period.

### **2.1.3 - Using the tractor in another region**

Only the AGCO dealer from whom the tractor was purchased is liable for the protection provided by the warranty. Any repairs should, wherever possible, always be carried out by this dealer. If, however, the owner moves to another region or if the tractor is to be used temporarily at a location a long way from the dealer from whom it was bought, it is advisable to ask this dealer for the name and address of the AGCO dealer closest to the new address and arrange to have the obligations remaining to be fulfilled under the warranty transferred to this dealer.

If the customer leaves the region covered by the original dealer without having taken these steps, the new dealer will offer its services if needed, but may invoice them at the normal rate unless:

- the customer has clearly stated that the warranty period has not expired, and
- the repair dealer has been given the possibility of taking the necessary steps with the selling dealer.

### **2.1.4 - Servicing after expiry of the warranty period**

During the warranty period, all servicing and repair work must be carried out by the AGCO dealer, who will carefully carry out detailed checks of the progress and performance of the new tractor.

To obtain best results from an AGCO tractor, it is important to continue regular servicing and periodic inspection after the warranty has expired. All major overhaul work on the tractor must be carried out by a local AGCO dealer; an experienced technician will detect any problems which may arise between one overhaul and the next.

Engineers regularly follow training courses to update their knowledge of the product and servicing and repair techniques, and the use of special tools and modern diagnostic equipment. They receive regular Service Bulletins and have access to all the workshop manuals and technical publications required to carry out repairs or servicing in accordance with the quality standards required by AGCO.

## 2 . INTRODUCTION - SAFETY INSTRUCTIONS AND WARRANTY

---

### 2.2 - SAFETY – SYMBOLS AND TERMS

---

This safety alert symbol means CAUTION!  
BE ALERT! YOUR SAFETY DEPENDS ON IT!



The safety alert symbol identifies important safety notices on machines, safety signs, in instruction books or elsewhere. When you see this symbol, be alert to the risk of injury or death. Follow the instructions in the safety notice.

#### **SAFETY is paramount! Why?**

- ACCIDENTS DISABLE AND KILL
- ACCIDENTS ARE COSTLY
- ACCIDENTS CAN BE AVOIDED

2

---

### 2.3 - TRACTOR AND IMPLEMENTS

The tractor is a source of mechanical and hydraulic power.

- On its own, the tractor is of little practical value. Only when used in conjunction with an implement or other attachment does it become a working unit.
- This operator instruction book has been compiled to explain the safe working practices that are associated with basic tractor operation under normal conditions.
- It does not cover all operation and safety instructions relevant to the implements and attachments that may be fitted at the time of tractor delivery or later.
- It is essential that operators use and understand the operator instruction books relating to these implements and attachments.

### 2.4 - MAXIMUM TRAVEL SPEEDS



***DANGER: Road use of agricultural tractors is subject to speed restrictions depending on the bulkiness of the equipment and weight of the transported load. Consult the regulations in force in the relevant countries.***

## 2 . INTRODUCTION - SAFETY INSTRUCTIONS AND WARRANTY

---

### 2.5 - NOTE TO THE USER

The purpose of the contents of this Book (text and illustrations) is to help the user to master tractor operation and servicing better.

Every vehicle part requires and should receive a certain level of servicing and maintenance in order to remain in perfect operating condition. The utmost has been done to include all settings and adjustments for use in all possible operating conditions. However, special attention is required in certain cases.

Please read this Operator Instruction Book very carefully in order to familiarise yourself with all the operating settings and procedures before using the tractor. Always remember that this machine has been designed and tested to work effectively in most operating conditions and that its operation depends on the servicing it receives.

Ask the dealer if certain cases require special attention. His Spare Parts and Service team will be pleased to help and to answer any questions relating to the operation and servicing of the machine.

#### 2.5.1 - This Book must be kept with the tractor at all times

It includes all information available about the product at the time of publication. The manufacturer reserves the right to modify it at any time.

#### 2.5.2 - Safety

Operator safety is one of the major concerns taken into account when designing and tuning the new tractor. The designers have included as many safety systems as possible. Despite these precautions, a number of accidents occur every year which could be avoided with a few seconds' thought and more cautious handling of agricultural machines and implements.

For this reason, you are strongly advised to carefully read and strictly apply the safety instructions set out in this Book.



**WARNING:** *In some illustrations in this book, safety guards and protective panels have been removed for the sake of clarity. Never use the tractor if these parts are not in place. If safety guards and protective panels have been removed for repair purposes, they MUST be refitted before use.*

**REMEMBER THAT SAFETY DEPENDS ON YOU. YOU CAN PREVENT ACCIDENTS WHICH COULD CAUSE SERIOUS INJURY OR DEATH.**

### 2.6 - DECALS DANGER, WARNING AND CAUTION

Whenever you see the words and symbols shown below used in this book or on decals, you MUST apply their instructions as they concern personal safety.



**DANGER:** *This symbol, accompanied by the word DANGER, indicates an imminent danger, which, if not prevented, may result in DEATH OR VERY SERIOUS INJURY.*



**WARNING:** *This symbol, accompanied by the word WARNING, indicates a potential danger, which, if not prevented, may result in DEATH OR SERIOUS INJURY.*



**CAUTION:** *This symbol, accompanied by the word CAUTION, indicates a potential risk, which, if not prevented, may result in MINOR INJURY.*

**IMPORTANT:** *The word IMPORTANT is used to identify special instructions or procedures which, if not strictly observed, may cause damage to, or destruction of the machine, the procedure being undertaken or the surroundings.*

**NOTE:** *The word NOTE is used to highlight particularly interesting information that might enable more efficient or convenient operation or repair.*

#### 2.6.1 - Decals



**WARNING:** *DO NOT REMOVE OR OBSCURE decals indicating Danger, Warning, Caution or Instruction.*

Replace any Danger, Warning, Caution or Instruction decals which are illegible or missing. Replacement decals are available from your Dealer in the event of loss or damage. The actual location of these safety decals is illustrated at the end of this chapter.

If a second-hand tractor has been purchased, refer to the illustrations at the end of this chapter to ensure that all the safety decals are in the correct position and are legible.



**Suggest:**

**For more complete manuals. Please go to the home page.**

**<https://www.ebooklibonline.com>**

**If the above button click is invalid. Please download this document first, and then click the above link to download the complete manual.**

**Thank you so much for reading**

## 2 . INTRODUCTION - SAFETY INSTRUCTIONS AND WARRANTY

### 2.7 - SAFETY PROCEDURE

#### 2.7.1 - Ensuring proper operation

To operate an agricultural tractor properly, you must be a qualified and approved operator. To be qualified, you must understand the written instructions supplied in this operator instruction book, have training in how to operate the tractor and know the safety rules and regulations applicable to the job.

Some regulations specify that no one under the age of 16 may operate power machinery, for example. This includes tractors. It is your responsibility to know what these regulations are and to observe them in the operating area or situation.

These regulations include, but are not limited to, the following instructions for safe tractor operation.



**WARNING:** *The operator must not drink alcohol or take any medication that may affect his concentration or co-ordination. If taking medication, whether prescribed or not, the operator must seek medical advice with regard to his ability to operate machinery safely.*

#### 2.7.2 - Observe the following instructions

- **DO NOT ALLOW** children or unqualified persons to operate the tractor. Move unauthorised persons away from the work area.
- Always wear your seat belt securely fastened.
- Where possible, avoid operating the tractor near ditches, embankments and holes. Reduce speed when negotiating turns and slopes and on rough, slippery or muddy surfaces.
- Stay off slopes that are too steep for safe operation.
- Watch where you are going, especially at row ends, on roads and around trees.
- The instructor seat is only intended for short periods of use.
- Do not allow children to use the instructor seat.
- **DO NOT PERMIT** others to ride on the tractor or the implement unless an approved instructor seat is fitted.
- Only hitch attachments to the drawbar and recommended hitch points and never above the centre line of the rear axle.
- Operate the tractor smoothly — avoid jerky turns, starts or stops. When the tractor is stopped, apply the hand brake securely. Lower the implement and remove the ignition key.
- **DO NOT MODIFY OR REMOVE** any part of the equipment and **DO NOT USE** attachments unless they are properly adapted to suit your tractor.

### 2.8 - PROTECTION

#### 2.8.1 - Cab

The ROPS (Roll Over Protective Structure) has been designed for this tractor series and meets all legal safety and sound requirements.

The ROPS conforms to the various international safety standards. The ROPS must **NEVER** be drilled or modified to enable installation of accessories or implements. Welding components is **NOT PERMITTED. DO NOT ATTACH** chains or ropes to the main frame of the ROPS for pulling purposes.

If additional controls or displays must be added to the operator's area, contact your AGCO dealer for information.

The ROPS and the seat belt are effective in reducing injuries during overturn accidents. Wearing the seat belt is an important part of this protection.

#### 2.8.2 - Roll Over Protection Structure (ROPS)

A Roll Over Protection Structure (ROPS) and seat belt are fitted to tractors without a cab during manufacture. If the ROPS has been removed by the original owner or subsequently, it is recommended to fit the tractor with a new one, in addition to a seat belt. ROPS are effective in reducing injuries when accidents occur and the tractor overturns. If the tractor overturns and is not fitted with a ROPS, serious injury or death may result (Fig. 1).

If the tractor is fitted with a folding ROPS, **DO NOT** wear the seat belt when the ROPS is in folded position.



## 2 . INTRODUCTION - SAFETY INSTRUCTIONS AND WARRANTY

**IMPORTANT:** The Roll Over Protection Structure (ROPS) only offers partial protection against loads falling on the operator's seat, and additional protection can only be obtained by using implements designed to prevent loads from falling on the operator's seat.

Do not forget that the protective roof (FOPS) only offers protection against light objects falling, and is not designed to offer protection against heavy objects falling, such as big bales and fence posts.

### Operation

- Before using the tractor, ensure the ROPS is not damaged, it is attached securely to the tractor and, if it folds, it is firmly set in the raised position.
- If the ROPS has been removed from the tractor or folded for any operation, it must be refitted immediately afterwards, with its attachment points tightened to the specified tightening torques.
- DO NOT attach chains, ropes or cables to the ROPS to draw a trailer or accessory, as this can make the tractor tip backwards. Always use the tractor drawbar for this purpose.
- Always wear the seat belt securely tightened, but do not wear it if the ROPS is folded or removed.
- Check the condition of the seat belt and replace it if it is damaged (Fig. 2).

### 2.8.2.1 - Damaged ROPS

If the tractor has overturned or the ROPS has been damaged (for example if it has hit an object during travel), the ROPS must be replaced to provide the original level of protection.

After an accident, check the condition of the ROPS, the operator's seat, the seat belt and all its attachment points. Before using the tractor again, replace any damaged parts. DO NOT WELD, DRILL, BEND OR STRAIGHTEN THE ROPS because this will reduce the protection it offers.

### Cab

The safety cab is designed for this tractor series and meets all standards and requirements applicable to cab safety and noise levels at work.

The safety cab meets all international safety standards. NEVER drill or modify it to fit accessories or implements. Welding parts to the cab or repairing damaged parts is PROHIBITED. DO NOT attach chains or ropes to the cab frame to pull or draw objects.

If additional controls or indicator lights need fitting at the operator's seat, contact your AGCO dealer for instructions on how to proceed.

The ROPS cab combined with the seat belt effectively reduces the risk of injury in the event of the tractor overturning. Wearing the seat belt plays an important part in this protection.

- Always buckle the seat belt with the strap correctly adjusted.
- Check the condition of the seat belt and replace it if it is damaged (Fig. 2).



**<https://www.ebooklibonline.com>**

Hello dear friend!

Thank you very much for reading.

Enter the link into your browser.

The full manual is available for immediate download.

**<https://www.ebooklibonline.com>**