

OPERATOR'S MANUAL

TEDDER

TD2427



FRONTIER

5PQ990107 (10/08/2014)



Suggest:

For more complete manuals. Please go to the home page.

<https://www.ebooklibonline.com>

If the above button click is invalid. Please download this document first, and then click the above link to download the complete manual.

Thank you so much for reading

TABLE OF CONTENTS

Introduction	2
Intended Use	2
Serial Number	2
Specifications	2
Safety	3
Power Source Safety	3
Driveline Safety	4
Safety Decals and Reflectors	5
Hitching	6
Attaching to the Tractor	6
Transporting	7
Field Transport	7
Road Transport	7
Field Set-up	8
Tine Height Adjustment	8
Adjustments	9
Tine Pitch Adjustment	9
Axle Adjustments	10
General Operation	11
Folding for Transport	11
Lubrication and Maintenance	12
Gearbox Lubrication	12
General Lubrication	13
Grease Fitting Lubrication	14
PTO Lubrication	15
Wheel Bearing Maintenance	16
Electrical	17
Technical	18
Timing the Rotors	18
Replacing the Flotation Springs	19
Torque Specifications	20
Standard Torque Chart	20
Metric Torque Chart	21
Warranty	22
Illustrated Parts Breakdown	23
Chassis Assembly	24
Transport Axle Assembly S/N -800424.....	25
Transport Axle Assembly S/N 800424+.....	26
Transport Lock Assembly	27
Lift Frame Assembly	28
Guards	29
Rotor & Tine Arm	30
Axle Assembly	31
Gearbox Assembly	32
Input Gearbox Assembly	33
Pivot Gearbox Assembly	34
Outer Gearbox Assembly	35
PTO Shaft Assembly S/N -800350	36
PTO Shaft Assembly S/N 800350+	37
Hydraulics S/N - 800099	38
Hydraulics S/N 800099+	39
Decals	40

<https://www.ebooklibonline.com>

Hello dear friend!

Thank you very much for reading.

Enter the link into your browser.

The full manual is available for immediate download.

<https://www.ebooklibonline.com>

INTRODUCTION

Intended Use

Frontier Tedders are designed for evenly distributing and drying hay crops only. Frontier will not cover under warranty a tedder that has been used outside of these crops.

Serial Number

The tedder's serial number can be found on the right side tongue directly under the driveline. Please use this number when requesting service, seeking information, or ordering parts. For the operator's convenience, space to record the serial number, model number, purchase date, and dealer has been provided inside the front cover of this manual.



Specifications



Specifications	TD2418	TD2427
Working Width	18' 2" (5.5m)	27' (8.1m)
Transport Width	10' 6" (3.2m)	9' (2.7m)
Gearboxes	Sealed/Oil Bath	
Rotors	4	6
Arms Per Rotor	7	
Arm Construction	Round Tubular	
PTO/HP Recommended	35	55
Weight	1350lbs	3000lbs
Spindle Size	1-3/8"	
Hub	4-Bolt w/ Tapered Bearings	
Wheels	4-Bolt Heavy Duty, Painted	
Tires	18.5 x 8	
Hydraulic Requirement	1000psi	1200psi

SAFETY

!!SAFETY FIRST!!



This symbol precedes specific safety instructions throughout this manual. When reading the manual, pay close attention to the information that follows this symbol.



FAILURE TO FOLLOW INSTRUCTIONS IN THIS MANUAL COULD RESULT IN PERSONAL INJURY OR DEATH. READ ENTIRE MANUAL BEFORE OPERATING THE TEDDER.



Keep hands, feet and clothing away from the machine's power take-off (PTO) shaft and any other moving parts until the machine has been shut down and the power source has been locked out.



Do not adjust, unclog, lubricate, or service the tedder until it has been shut down.



Support the tedder securely while working under it.



Be certain all bystanders and animals are a safe distance away before folding or unfolding the tedder.



Never allow anyone to ride on the tractor or the tedder.



When transporting, never exceed a speed of 20 MPH and avoid sudden turns.



Be constantly aware of the ends of the machine to avoid collision with other objects.



When transporting the machine on public roads use the proper reflectors, lights, and slow moving vehicle signs required by local government agencies. Frontier will not be liable for any traffic violations.



Be sure to check all fasteners before and after every use, this is especially important when the tedder is new but is a good practice on any machinery with high vibration levels.



Be careful around hydraulic hoses and fittings. Never go near hydraulic leaks. High pressure leaks can puncture skin and cause serious injury or death!

Power Source Safety



Do not use a PTO shaft without a rotating shield in good working order. Make sure drive system safety shields are in place on both the tractor and the tedder.



Do not overextend the PTO shaft



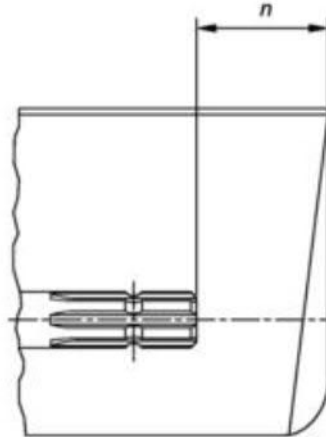
PTO shield chains must be attached to the tractor and/or the tedder to keep the shield from rotating.

SAFETY

Stay Clear of Rotating Drivelines



TS1644-UN-22AUG95



H96219-UN-29APR10

Entanglement in rotating driveline can cause serious injury or death.

Keep tractor master shield and driveline shields in place at all times. Make sure rotating shields turn freely.

Wear close fitting clothing. Stop the engine and be sure that PTO driveline is stopped before making adjustments, connections, or cleaning out PTO driven equipment.

Do not install any adapter device between the tractor and the primary implement PTO drive shaft that will allow a 1000 rpm tractor shaft to power a 540 rpm implement at speeds higher than 540 rpm.

Do not install any adapter device that results in a portion of the rotating implement shaft, tractor shaft, or the adapter to be unguarded. The tractor master shield shall overlap the end of the splined shaft and the added adaptor device as outlined in the table.

PTO Type	Diameter	Splines	$n \pm 5 \text{ mm (0.20 in.)}$
1	35 mm (1.378 in.)	6	85 mm (3.35 in.)
2	35 mm (1.378 in.)	21	85 mm (3.35 in.)
3	45 mm (1.772 in.)	20	100 mm (4.00 in.)

SAFETY

Safety Decals and Reflectors

Safety decals and reflectors are for the safety of yourself and others, and must be heeded at all times. If any decals are missing, faded, or damaged in any way, please contact your dealer for replacements immediately. Shown below are some of the decals used on your tedder.

⚠ WARNING

Do not exceed this Implement's maximum transport speed of 32km/h (20mph). Exceeding this speed may result in loss of control during transport or braking and serious injury or death.

Transport only with a properly ballasted tractor and a properly attached safety tow chain. Do not transport with a motor vehicle. Reduce speed and use additional caution when on inclines, towing under adverse surface conditions, and turning.

IMPORTANT

To avoid machine damage, tilt cylinder must be extended before raising or lowering tedder. Always clean hose ends prior to attaching to tractor.

⚠ WARNING

Cover is under extreme spring pressure. See Operator's Manual for removal instructions.

⚠ CAUTION

To avoid serious injury:

- Read Operator's Manual before operating, servicing or repairing equipment. Follow all safety rules and instructions. (Manuals are available from your selling dealer.)
- Never allow riders.
- Keep bystanders away from equipment during operation.
- Operate from tractor seat only.
- Keep all shields in place and good condition.
- Lower equipment to ground, stop engine, remove key and set brake before dismounting tractor.
- Never allow children or untrained persons to operate equipment.

⚠ DANGER

Entanglement in rotating drivelines can cause serious injury or death. Keep all shields in place. Avoid contact with rotating parts.

⚠ WARNING

PINCH POINT HAZARD
Keep Clear

⚠ CAUTION

Operate only with 540 rpm PTO



⚠ WARNING

Avoid serious injury from hitch whipping up. Tedder must be attached to tractor when operating hydraulics.

⚠ WARNING

To help prevent entanglement, stand clear of tines. Disengage and shut off all engine power before adjusting tine height.

⚠ WARNING

THROWN OBJECTS

Do not operate near people. Debris can be thrown a long distance.

⚠ WARNING

Avoid serious injury from falling wings during service or transport. Install lock chains or cylinder locks before transporting or parking implement with wings raised. Do not service or adjust with wings raised. Make sure bystanders are clear before lowering wings.

⚠ WARNING

High-Pressure hydraulic oil leaks can penetrate skin resulting in serious injury, gangrene, or death.

- Check for leaks with cardboard; never use hand.
- Before loosening fittings: lower load, release pressure, and be sure oil is cool.
- Consult physician immediately if skin penetration occurs.

<https://www.ebooklibonline.com>

Hello dear friend!

Thank you very much for reading.

Enter the link into your browser.

The full manual is available for immediate download.

<https://www.ebooklibonline.com>