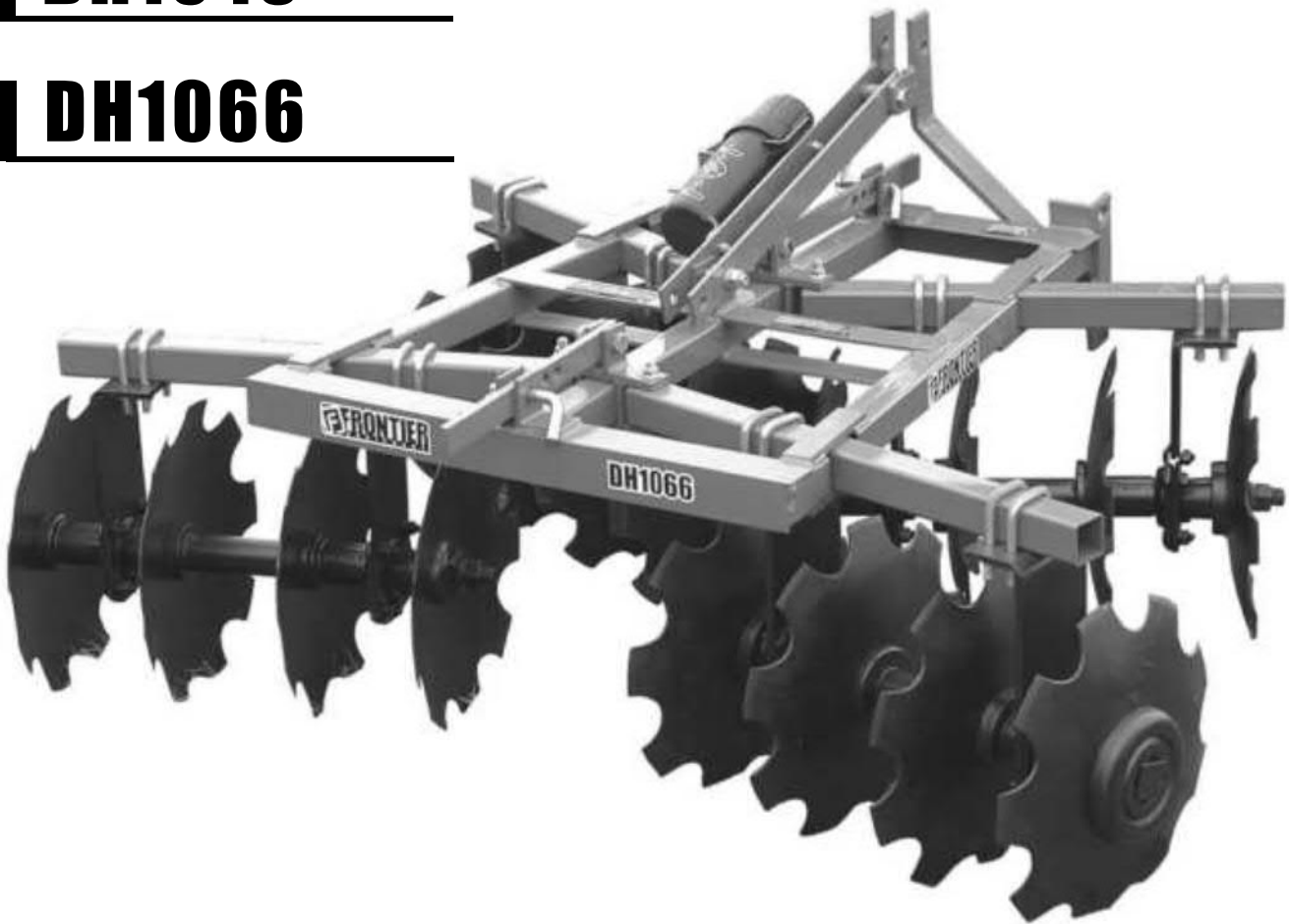


OPERATOR'S MANUAL

DISK HARROWS

DH1048

DH1066



FRONTIER
EQUIPMENT



Suggest:

For more complete manuals. Please go to the home page.

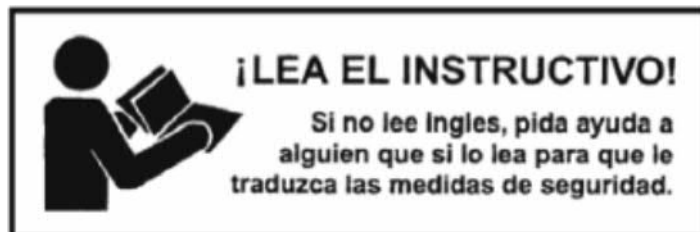
<https://www.ebooklibonline.com>

If the above button click is invalid. Please download this document first, and then click the above link to download the complete manual.

Thank you so much for reading

TABLE OF CONTENTS

| | |
|--|---------|
| INTRODUCTION | ii |
| SPECIFICATIONS / GENERAL INFORMATION | 1 |
| SAFETY DECALS | 2 |
| SAFETY RULES | 3 - 5 |
| DEALER INSTRUCTIONS | 6 |
| OPERATION | 7 - 8 |
| TROUBLE SHOOTING. | 9 |
| OWNER SERVICE | 10 |
| PARTS CATALOG | 11 - 13 |
| BOLT SIZE AND BOLT TORQUE CHART | 14 |
| WARRANTY | 15 |
| WARRANTY FOR PARTS | 16 |



<https://www.ebooklibonline.com>

Hello dear friend!

Thank you very much for reading.

Enter the link into your browser.

The full manual is available for immediate download.

<https://www.ebooklibonline.com>

SPECIFICATIONS

| | DH1048 | DH1066 |
|------------------------------|--|--|
| 3-Point Hitch | Category I (iMatch Compatible) | Category I (iMatch Compatible) |
| Working Width | 48" | 66" |
| Blade Spacing | 7.5" | 7.5" |
| Tractor HP (Max) | 28 HP | 28 HP |
| Shipping Weight | 452 lbs. | 540 lbs. |
| Approximate Operating Weight | 388 lbs. | 445 lbs. |
| Number of Blades | 12 | 16 |
| Blade Size | 16" diameter | 16" diameter |
| Blade Thickness | 3 mm (0.118") | 3 mm (0.118") |
| Front Gang Blade Type | Notched | Notched |
| Rear Gang Blade Type | Notched | Notched |
| Frame Tubing | 2" square | 2" square |
| Gang Tubing | 2" square | 2" square |
| Bearing Hanger | 3/8" formed plate with 1/2" U-bolt | 3/8" formed plate with 1/2" U-bolt |
| Bearing Type | Self aligning sealed ball bearing in pre-rieveted flange | Self aligning sealed ball bearing in pre-rieveted flange |
| Gang Axle | 1" square | 1" square |
| Front Gang Angles | 2, 6, 12, 18 degrees | 2, 6, 12, 18 degrees |
| Rear Gang Angles | 10, 14, 18, 23 degrees | 10, 14, 18, 23 degrees |
| Approximate Assembly Time | 15 minutes | 15 minutes |

GENERAL INFORMATION

The purpose of this manual is to assist you in operating and maintaining your Disc Harrow. Read it carefully. It furnishes information and instructions that will help you achieve years of dependable performance.

These instructions have been compiled from field experience and engineering data. Some information may be general in nature, due to unknown and varying operating conditions. However, through experience and these instructions, you should be able to develop procedures suitable to

your particular situation.

The illustrations and data used in this manual were current at the time of printing. However, due to possible inline production changes, your machine may vary slightly in detail. We reserve the right to redesign and change the machines as may be necessary without notification.

Throughout this manual, references are made to right and left direction. These are determined by standing behind the tractor facing the direction of forward travel.

SAFETY & INSTRUCTIONAL DECALS

ATTENTION! BECOME ALERT! YOUR SAFETY IS INVOLVED!

FAILURE TO FOLLOW THESE INSTRUCTIONS COULD RESULT IN SERIOUS INJURY OR DEATH
Replace Decals Immediately If Damaged!

| | | |
|---|---|--|
|  |  | <h2 style="text-align: center;">⚠ WARNING</h2> <h3 style="text-align: center;">CRUSHING AND PINCHING HAZARD</h3> <ul style="list-style-type: none"> • Be extremely careful handling various parts of the machine. They are extremely heavy and hands, fingers, feet and other body parts could be crushed or pinched between tractor and implement. • Operate tractor controls from tractor seat only. • Do not stand between tractor and implement when tractor is in gear. • Make sure parking brake is engaged before going between tractor and implement. • Stand clear of machine when in operation or being raised or lowered. <p style="text-align: right;">15194A</p> |
|  |  | |

①

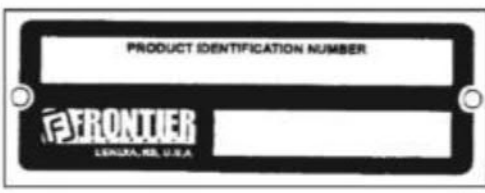
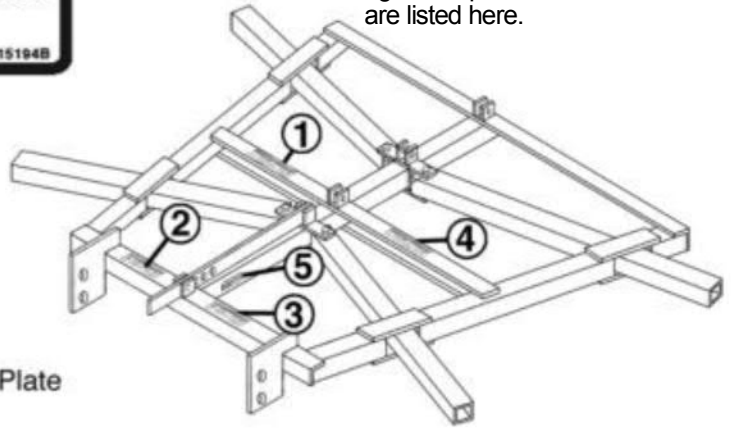
5TL15194A

Check that all safety decals are installed and in good condition. Replace if decals are worn or damaged. Replacement Part numbers are listed here.

| | |
|---|---|
|  | <h2 style="text-align: center;">⚠ WARNING</h2> <h3 style="text-align: center;">FALLING BLADE HAZARD</h3> <ul style="list-style-type: none"> • Can cause serious injury or death. • Keep hands and feet from under raised blade. • Always put disc in the lowered position and chock gangs to prevent rolling when disconnecting disc gangs for maintenance or repair. <p style="text-align: right;">15194B</p> |
|  | |


②

5TL15194B



⑤

Serial Number Plate



| | |
|---|---|
|  | <h2 style="text-align: center;">⚠ WARNING</h2> <h3 style="text-align: center;">TO PREVENT SERIOUS INJURY OR DEATH:</h3> <ul style="list-style-type: none"> • Avoid unsafe operation and maintenance. Do not operate or work on this machine without reading and understanding the operator's manual. • If manual is lost, contact your dealer. <p style="text-align: right;">15194C</p> |
| | |

③

5TL15194C

5TL15194D

④

| | |
|---|---|
|  | <h2 style="text-align: center;">⚠ WARNING</h2> <ul style="list-style-type: none"> • DO NOT allow others to ride on the machine or tractor. • Park or block disc so it will not roll when disconnecting from tractor drawbar. • Never go underneath equipment (lowered to the ground or raised) unless it is properly blocked and secured. • Never place any part of the body underneath equipment or between movable parts even when the engine has been turned off. • Be sure that everyone is standing clear before operating the machine. • DO NOT operate or transport at high speeds. • DO NOT operate or transport on steep slopes. <p style="text-align: right;">15194D</p> |
|  | |



SAFETY RULES



ATTENTION! BECOME ALERT! YOUR SAFETY IS INVOLVED!

Safety is a primary concern in the design and manufacture of our products. Unfortunately, our efforts to provide safe equipment can be wiped out by an operator's single careless act.

In addition to the design and configuration of equipment, hazard control and accident prevention are dependent upon the awareness, concern, judgement, and proper training of personnel involved in the operation, transport, maintenance and storage of equipment.

It has been said "The best safety device is an informed, careful operator." We ask you to be that kind of operator.

TRAINING

- Safety instructions are important! Read all attachment and power unit manuals; follow all safety rules and safety decal information. (Replacement manuals are available from selling dealer.) Failure to follow instructions or safety rules can result in serious injury or death.
- If you do not understand any part of this manual and need assistance, see your dealer.
- Operators must be instructed in and be capable of the safe operation of the equipment, its attachments, and all controls. Do not allow anyone to operate this equipment without proper instructions.
- Never allow children or untrained persons to operate equipment.
- Train all new personnel and review instruction's frequently with existing workers. A person who has not read and understood all operating and safety instructions is not qualified to operate the machine. An untrained operator exposes himself and bystanders to possible serious injury or death.

PREPARATION

- Always wear relatively tight and belted clothing to avoid getting caught in moving parts. Wear

sturdy, rough-soled work shoes and protective equipment for eyes, hair, hands, hearing, and head; and respirator or filter mask where appropriate.

- Make sure attachment is properly secured, adjusted, and in good operating condition.
- Power unit must be equipped with ROPS or ROPS cab and seat belt. Keep seat belt securely fastened. Falling off power unit can result in death from being run over or crushed. Keep foldable ROPS system in "locked up" position at all times.
- A minimum 20% of tractor and equipment weight must be on the tractor front wheels when attachments are in transport position. Without this weight, tractor could tip over, causing personal injury or death. The weight may be attained with a loader, front wheel weights, ballast in tires or front tractor weights. Weigh the tractor and equipment. Do not estimate.

TRANSPORTATION

- Always comply with all state and local laws governing highway safety and lighting and marking requirements.
- Never allow riders on power unit or attachment.
- Do not operate or transport on steep slopes.
- Use extreme care and reduce ground speed on slopes and rough terrain.
- Do not operate or transport equipment while under the influence of alcohol or drugs. Consult your doctor about operating this machine while taking prescription medications.

OPERATION

- Never go underneath equipment (lowered to the ground or raised) unless it is properly blocked and secured. Never place any part of the body underneath equipment or between moveable parts



SAFETY RULES



ATTENTION! BECOME ALERT! YOUR SAFETY IS INVOLVED!

OPERATION (cont'd)

even when the engine has been turned off. Hydraulic system leak down, hydraulic system failures, mechanical failures, or movement of control levers can cause

equipment to drop or rotate unexpectedly and cause severe injury or death.

- Always comply with all state and local laws governing highway safety and lighting and marking requirements.
- Operate only in daylight or good artificial light.
- Keep bystanders away from equipment.
- Keep hands, feet, hair, and clothing away from equipment while engine is running. Stay clear of all moving parts.
- Power unit must be equipped with ROPS or ROPS cab and seat belt. Keep seat belt securely fastened. Falling off power unit can result in death from being run over or crushed. Keep foldable ROPS system in “locked up” position at all times.
- Never allow riders on power unit or attachment.
- Always sit in power unit seat when operating controls or starting engine. Securely fasten seat belt, place transmission in neutral, engage brake, and ensure all other controls are disengaged before starting power unit engine.
- Look down and to the rear and make sure area is clear before operating in reverse.
- Use extreme care when working close to fences, ditches, other obstructions, or on hillsides.
- Do not operate or transport on steep slopes.
- Do not stop, start, or change directions suddenly on slopes. Always operate down slopes; never across the face.

• Use extreme care and reduce ground speed on slopes and rough terrain.

• Keep alert and watch the front as well as the rear when operating.

• When making gang adjustments, be careful to keep hands and feet clear of sliding parts and possible pinch points.

• Stop power unit and equipment immediately upon striking an obstruction. Turn off engine, remove key, inspect, and repair any damage before resuming operation.

• Before leaving operator's seat, lower lift arms and put attachment on the ground. Engage brake, stop engine, remove key, and remove seat belt.

MAINTENANCE

• Always wear relatively tight and belted clothing to avoid getting caught in moving parts. Wear sturdy, rough-soled work shoes and protective equipment for eyes, hair, hands, hearing, and head; and respirator or filter mask where appropriate.

• Never go underneath equipment (lowered to the ground or raised) unless it is properly blocked and secured. Never place any part of the body underneath equipment or between moveable parts even when the engine has been turned off. Hydraulic system leak down, hydraulic system failures, mechanical failures, or movement of control levers can cause equipment to drop or rotate unexpectedly and cause severe injury or death.

• When performing maintenance or repairs make sure the equipment is in the lowered position and both the mainframe and gangs are properly blocked and secured to prevent rolling. Failure to do so can cause serious injury or death.

• Make sure attachment is properly secured, adjusted, and in good operating condition.

<https://www.ebooklibonline.com>

Hello dear friend!

Thank you very much for reading.

Enter the link into your browser.

The full manual is available for immediate download.

<https://www.ebooklibonline.com>