

OPERATOR'S MANUAL

BALE PROCESSOR

BP1166



FRONTIER
EQUIPMENT™

5HB0500115 (8/11/08)

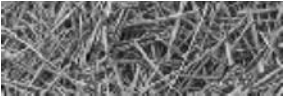


TABLE OF CONTENTS

Part 1: Operating Instructions	1
Introduction	2
Purpose	2
Section 1: Safety	4
1.1 Safety-alert symbols	4
1.2 Operator - personal equipment	6
1.3 Machine safety labels	7
1.4 Shielding	10
1.5 Personal equipment	10
1.6 Safety review	10
1.7 Towing/road transport	12
Section 2: Dealer preparation	13
2.1 Assembly required	13
2.2 Pre-delivery inspection	14
2.3 Machine operation check	14
2.4 BP1166 BALE PROCESSOR shipping list	15
Section 3: Machine Operation	16
3.1 Introduction to the machine	16
3.1.2 Operator's station/controls	16
3.1.3 Bale conveyor speed	17
3.1.4 Deflector	17
3.1.5 Stripper plates/screens	18
3.1.6 Rotor	18
3.1.7 Slug bars	19
3.1.8 Rotor access door	19
3.2 Operation	20
3.2.1 Pre-operation inspection	20
3.2.2 Hitching the BP1166 BALE PROCESSOR to a tractor	21
3.2.3 Starting the machine	22
3.2.4 Normal shut-down procedure	23
3.2.5 Unhitching the BP1166 BALE PROCESSOR from a tractor	23
3.2.6 Loading bales into the BP1166 BALE PROCESSOR	24
3.3 Transportation and storage	25
3.3.1 Preparing for storage	25
3.3.2 Removing from storage (shipping position)	26

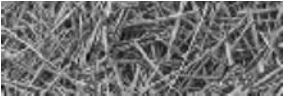


TABLE OF CONTENTS

3.4	Adjusting the machine	27
3.4.1	Changing distribution pattern	27
3.4.2	Changing length of cut	27
Section 4: General maintenance		29
4.1	Maintenance and adjustments	29
4.2	Lubrication	30
4.3	Axle, wheels, tires	31
4.4	General appearance	31
Section 5: Troubleshooting		32
APPENDIX A: WARRANTY		34
Appendix B: BP1166 BALE PROCESSOR Specifications		35
Appendix C: Required For Operation		36
Part 2: Parts Reference		37
MAIN FRAME ASSEMBLY		38
SHREDDER FRONT ASSEMBLY		40
PRESSURE RELIEF VALVE		42
REAR BEARING AND BALE GUIDE ASSEMBLY		44
ROTOR ASSEMBLY		46
BALE CONVEYOR ASSEMBLY		48
BALE LOADER ASSEMBLY		50
RACK DEFLECTOR ASSEMBLY		52
SHIPPING KIT HARDWARE		54
HYDRAULIC ASSEMBLY		56
FLOW CONTROL VALVE		58
ORBIT MOTOR		60
WHEEL AND BEARING		62
PTO ASSEMBLY - PLASTIC GUARD		64
BP1166 BALE PROCESSOR QUICK TATCH		66
TAILLIGHTS AND OPERATOR'S MANUAL ENCLOSURE & WIRING DIAGRAM		68
BP1166 BALE PROCESSOR DECAL REQUIREMENTS		70
BP1166 BALE PROCESSOR DECAL LOCATIONS		72

<https://www.ebooklibonline.com>

Hello dear friend!

Thank you very much for reading.

Enter the link into your browser.

The full manual is available for immediate download.

<https://www.ebooklibonline.com>

OPERATOR'S MANUAL

BALE PROCESSOR

BP1166

PART 1: Operating Instructions



Introduction

Your model BP1166 BALE PROCESSOR is designed to load and shred most types of baled livestock forage. It is designed specifically for use on 6-1/2 ft. diameter round bales weighing up to 1,500 pounds and 5-1/2 feet in length.

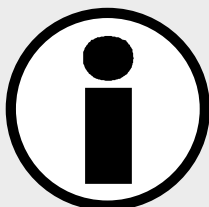
To avoid possible damage to the machine and risk of injury to the operator, consult with a Fointer representative before attempting to shred materials other than livestock forage.

The BP1166 BALE PROCESSOR has multiple uses:

- Laying forage windrows in open fields.
- Filling feed bunks - fenceline, circular etc.
- Spreading straw for livestock bedding.
- Spreading forage over perennial plants, such as strawberries, mushrooms, etc.
- Spreading forage over reclaimed land areas.

Purpose

The purpose of this owner's manual is to explain maintenance requirements and routine adjustments for the most efficient operation of your BP1166 BALE PROCESSOR. There is also a trouble shooting section that may help in case of problems in the field. Any information not covered in this manual may be obtained from your dealer.



SPECIAL NOTE: When reference is made as to front, rear, left hand, or right hand of this machine, the reference is always made from standing at the rear end of the machine and looking toward the hitch. Always use serial number and model number when referring to parts or problems. Please obtain your serial number and write it below for your future reference.

MODEL BP1166 BALE PROCESSOR

SERIAL NO _____

How to use this manual

Manual organization

This manual is organized into the following parts:

- **Part 1: Operating instructions** explain how to set up, use and maintain the BP1166 BALE PROCESSOR.
- **Part 2: Parts reference** contains diagrams of each assembly, with the part number of each part. A key

on the facing page contains a description of the part and the quantity used.

Dealer responsibilities

- Read Section 2, “Dealer Preparation,” and perform the tasks outlined. Also perform a pre-operation inspection as described in Section 3.2.1.
- Upon delivery of the unit to the customer, it is your responsibility to conduct a training session on the safe operation of the unit for the primary operator(s). You must also conduct a “walk-around” inspection of all safety instructional decals on the machine itself. Decals are illustrated in **Part 2: Parts Reference**.
- **Appendix A** provides details of the warranty.

Operator responsibilities

- Operator is responsible for his safety.
- Operator is also responsible for safety of others near the machine.
- Review Section 2, “Dealer Preparation,” to verify that the machine has been prepared for use.
- Thoroughly review sections 1 and 3, which explain normal operation of the machine, and section 4, which explain maintenance requirements.
- Note the important safety information in the Foreword and in Section 1, “Safety.”
- Keep copies of all manuals in a readily accessible location for future reference.



Suggest:

For more complete manuals. Please go to the home page.

<https://www.ebooklibonline.com>

If the above button click is invalid. Please download this document first, and then click the above link to download the complete manual.

Thank you so much for reading

Section 1: Safety

The safety of the operator is of great importance to Frontier. We have provided decals, shield and other safety features to aid you in using your machine safely. In addition, we ask you to be a careful operator who will properly use and service your Frontier equipment.



WARNING: FAILURE TO COMPLY WITH SAFETY INSTRUCTIONS THAT FOLLOW WITHIN THIS MANUAL COULD RESULT IN SEVERE PERSONAL INJURY OR DEATH. BEFORE ATTEMPTING TO OPERATE THIS MACHINE, CAREFULLY READ ALL INSTRUCTIONS CONTAINED WITHIN THIS MANUAL. ALSO READ THE INSTRUCTION MANUAL PROVIDED WITH YOUR TRACTOR.

THIS MACHINE IS NOT TO BE USED FOR ANY PURPOSE OTHER THAN THOSE EXPLAINED IN THE OPERATOR'S MANUAL, ADVERTISING LITERATURE OR OTHER DURATECH INDUSTRIES WRITTEN MATERIAL PERTAINING TO THE BP1166 BALE PROCESSOR

1.1 Safety-alert symbols

Decals are illustrated in **Part 2: Parts Reference**.

The safety decals located on your machine contain important and useful information that will help you operate your equipment safely.

To assure that all decals remain in place and in good condition, follow the instructions below:

- Keep decals clean. Use soap and water - not mineral spirits, adhesive cleaners and other similar cleaners that will damage the decal.
- Replace all damaged or missing decals. When attaching decals, surface temperature of the machine must be at least 40° F (5° C). The surface must be also be clean and dry.
- When replacing a machine component to which a decal is attached, be sure to also replace the decal.

Frontier uses industry accepted ANSI or ASAE standards in labeling its products for safety and operational characteristics.



Safety-Alert Symbol

Read and recognize safety information. Be alert to the potential for personal injury when you see this safety-alert symbol.

DANGER: Indicates an imminently hazardous situation that, if not avoided, will result in death or serious injury. This signal word is to be limited to the most extreme situations, typically for machine components that, for functional purposes, cannot be guarded.



DANGER:
Signal word - White Lettering/Red Background
Safety Alert Symbol - White Triangle/Red Exclamation Point

WARNING: Indicates a potentially hazardous situation that, if not avoided, could result in death or serious injury, and includes hazards that are exposed when guards are removed. It may also be used to alert against unsafe practices.



WARNING:
Signal word - Black Lettering/Orange Background
Safety Alert Symbol - Black Triangle/Orange Exclamation Point

CAUTION: Indicates a potentially hazardous situation that, if not avoided, may result in minor or moderate injury. It may also be used to alert against unsafe practices.



CAUTION:
Signal word - Black Lettering/Yellow Background
Safety Alert Symbol - Black Triangle/Yellow Exclamation Point

This manual uses the symbols to the right to denote important safety instructions and information.

The **DANGER**, **WARNING** and **CAUTION** symbols are used to denote conditions as stated in the text above. Furthermore, the text dealing with these situations is surrounded by a box with a white background, will begin with **DANGER**, **WARNING**, or **CAUTION**.

The **INFORMATION** symbol is used to denote important information or notes in regards to maintenance and use of the machine. The text for this information is surrounded by a box with a light grey background, and will begin with either **IMPORTANT** or **NOTE**.



<https://www.ebooklibonline.com>

Hello dear friend!

Thank you very much for reading.

Enter the link into your browser.

The full manual is available for immediate download.

<https://www.ebooklibonline.com>