

20
Round Bale
Accumulator
(Serial No. 110126-)

John Deere Ottumwa Works
OME94347 Issue C8
(Mark old manual OME87315 D7 for
machines up to Serial No. 110125)

LITHO IN U.S.A.
ENGLISH

Introduction

READ THIS MANUAL carefully to learn how to operate and service your machine correctly. Failure to do so could result in personal injury or equipment damage. This manual and safety signs on your machine may also be available in other languages. (See your John Deere dealer to order.)

THIS MANUAL SHOULD BE CONSIDERED a permanent part of your machine and should remain with the machine when you sell it.

MEASUREMENTS in this manual are given in both metric and customary U.S. unit equivalents. Use only correct replacement parts and fasteners. Metric and inch fasteners may require a specific metric or inch wrench.

RIGHT-HAND AND LEFT-HAND sides are determined by facing in the direction the implement will travel when going forward.

WRITE PRODUCT IDENTIFICATION NUMBERS (P.I.N.) in the Specification section. Accurately record all the numbers to help in tracing the machine should

it be stolen. Your dealer also needs these numbers when you order parts. File the identification numbers in a secure place off the machine.

WARRANTY is provided as part of John Deere's support program for customers who operate and maintain their equipment as described in this manual. The warranty is explained on the warranty certificate which you should have received from your dealer.

This warranty provides you the assurance that John Deere will back its products where defects appear within the warranty period. In some circumstances, John Deere also provides field improvements, often without charge to the customer, even if the product is out of warranty. Should the equipment be abused, or modified to change its performance beyond the original factory specifications, the warranty will become void and field improvements may be denied. Setting fuel delivery above specifications or otherwise overpowering machines will result in such action.

THE TIRE MANUFACTURER'S warranty applicable to your machine may not apply outside the U.S.



John Deere 20 Round Bale Accumulator

-UN-01APR97

E40248

EX,20ACC,IFC -19-09APR97

Contents

	Page		Page
Safety	05-1	Transporting	30-1
Preparing the Tractor		Operating the Accumulator	
Reference Round Baler Operator's		Keep Riders Off Machine	35-1
Manual	10-1	Follow Safe Operating Procedures	35-2
Using Tractor Convenience Outlet	10-1	Guidelines For Use	35-3
Convenience Outlet Adapter	10-2	Monitor-Controller Indicators and Switch	35-4
Installing Accumulator Monitor-Controller		Accumulator Operation Overview	35-5
Open-Station Tractor	10-2	Accumulator Gate Release Operation	35-7
Cab	10-3	Loading the Accumulator	35-8
Using Extended Rear-View Mirrors	10-4	Unloading the Accumulator	35-9
Preparing the Baler		Manually Operating Conveyor	35-10
Reference Round Baler Operator's		Operating Manual Gate Release Valve	35-11
Manual	15-1	Accessing Net Wrap Compartment With	
Removing Bale Push Bar (If Equipped)	15-1	Accumulator Attached	35-12
Sequence Valve		Attachments	40-1
Installing	15-3	Lubrication and Maintenance	
Adjusting	15-6	Lubricating and Maintaining Machine	
Routing Monitor-Controller Wiring Harness.	15-6	Safely	45-1
Installing Hitch on Baler Axle	15-9	Hydraulic Oil	45-1
Preparing the Accumulator		Grease	45-2
Checking Wheel Spindle Position	20-1	Alternative Lubricants	45-2
Checking Wheel Nut Torque	20-1	Mixing of Lubricants	45-3
Checking Tire Inflation Pressure	20-1	Lubricant Storage	45-3
Positioning Bale Guide Rails	20-2	Observe Lubrication Symbols	45-3
Attaching and Detaching		Perform Lubrication and Maintenance	45-4
Reference Round Baler Operator's		Lubrication and Maintenance Intervals	
Manual	25-1	Every 50 Hours	45-4
Attaching Machine Safely	25-1	Annually	45-7
Locking Baler Gate and Accumulator		Troubleshooting	
Conveyor Drive	25-2	Conveyor Assembly	50-1
Hand Signals	25-3	Accumulator Gate	50-2
Attaching Accumulator to Baler	25-4	Guide Rails	50-2
Connecting Hydraulic Hoses and Wiring		Controller-Monitor Difficulties	50-3
Harnesses	25-6	General Accumulator Difficulties	50-4
Detaching Accumulator From Baler	25-9		
Installing Bale Push Bar (If Equipped)	25-13		

Continued on next page

All information, illustrations and specifications in this manual are based on the latest information available at the time of publication. The right is reserved to make changes at any time without notice.

OME94347 C8-19-26FEB98

COPYRIGHT© 1998
DEERE & COMPANY
Moline, Illinois
All rights reserved
A John Deere ILLUSTRATION™ Manual
Previous Editions
Copyright 1997 Deere & Company

<https://www.ebooklibonline.com>

Hello dear friend!

Thank you very much for reading.

Enter the link into your browser.

The full manual is available for immediate download.

<https://www.ebooklibonline.com>

Contents

	Page
Service	
Using Safe Service Procedures	55-1
Keep Service Area Clean	55-2
Service Tires Safely	55-3
Electrical System Wiring Diagram	55-4
Hydraulic System Diagrams	
Conveyor Drive	55-5
Accumulator Gate Release	55-6
Adjusting Conveyor Drive Chain Tension	55-7
Replacing Conveyor Wear Pads	55-7
Replacing Conveyor Drive Motor	55-8
Tightening Frame Hardware	55-8
Replacing Gate Release Valves	55-9
Adjusting Bale Location Indicator	
Switches	55-9
Checking Microswitches	55-10
Replacing Accumulator Gate Cylinder	55-10
Replacing Sequence Valve	55-11
Replacing Monitor-Controller Switch and	
Indicator Lights	55-12
Storage	60-1
Specifications	
Machine Specifications	65-1
Record Product Identification Number	65-2
Bolt and Cap Screw Torque Value Charts	
Metric	65-3
Inch	65-4
Crime Prevention Tips	70-1
Index	

Safety

RECOGNIZE SAFETY INFORMATION

This is the safety-alert symbol. When you see this symbol on your machine or in this manual, be alert to the potential for personal injury.

Follow recommended precautions and safe operating practices.



DX,ALERT -19-03MAR93

T81389 -UN-07DEC68

UNDERSTAND SIGNAL WORDS

A signal word—DANGER, WARNING, or CAUTION—is used with the safety-alert symbol. DANGER identifies the most serious hazards.

DANGER or WARNING safety signs are located near specific hazards. General precautions are listed on CAUTION safety signs. CAUTION also calls attention to safety messages in this manual.



DX,SIGNAL -19-03MAR93

TS187 -19-30SEP88

FOLLOW SAFETY INSTRUCTIONS

Carefully read all safety messages in this manual and on your machine safety signs. Keep safety signs in good condition. Replace missing or damaged safety signs. Be sure new equipment components and repair parts include the current safety signs. Replacement safety signs are available from your John Deere dealer.

Learn how to operate the machine and how to use controls properly. Do not let anyone operate without instruction.

Keep your machine in proper working condition. Unauthorized modifications to the machine may impair the function and/or safety and affect machine life.

If you do not understand any part of this manual and need assistance, contact your John Deere dealer.



DX,READ -19-03MAR93

TS201 -UN-23AUG88



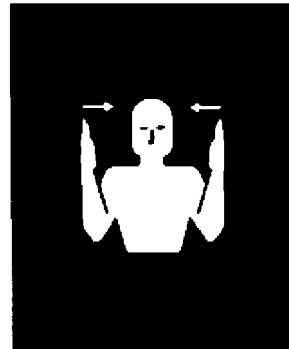
USE A SIGNAL PERSON

Use a signal person to direct movement of the tractor/baler/accumulator combination, whenever the tractor operator's view is obstructed.

Designate one individual as THE signal person. Always have signal person stand in clear view. Be sure signal person stays a safe distance away from the machines when they are moving.

Prior to starting the tractor, discuss hand signals and what each signal means to avoid misunderstandings and confusion which could result in a serious injury or fatal accident for someone.

Keep all bystanders away whenever the machines are moved.



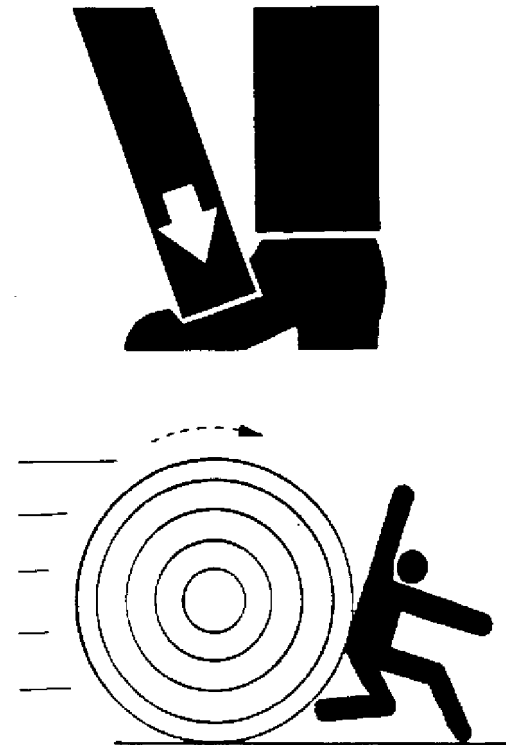
N43984 -UN-11DEC91

EX,20ACCC,A -19-01AUG96

PROTECT BYSTANDERS

To prevent crushing injury, be sure bystanders stand clear before operating rear gate and unloading bale.

Do not allow bystanders to walk or drive within 2.5 m (10 ft) of accumulator when operating in the field.



-UN-23AUG88

TS226

-UN-30APR92

E36666

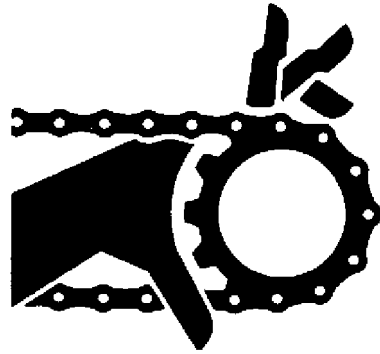
EX,20ACCC,B -19-09APR97



OPERATE ACCUMULATOR SAFELY

To avoid injury or death by being pulled into the conveyer assembly:

- DO NOT attempt to manually move bales onto accumulator or unplug conveyer area WHILE BALER OR ACCUMULATOR IS RUNNING. The conveyer moves faster than you.
- Disengage PTO and shut off tractor engine.
- Stand clear of baler and accumulator at all times when machines are operating.



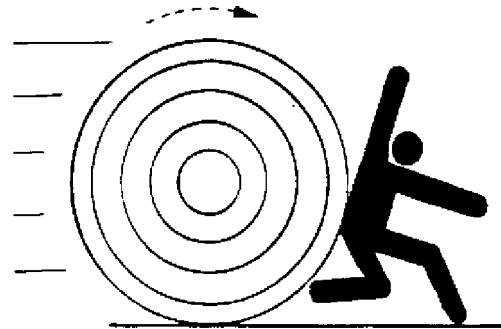
EX.20ACCC.C -19-13AUG96

-UN-23AUG68
TS284

OPERATE SAFELY ON SLOPES

Be especially careful when operating on hillsides. The baler and accumulator may tip sideways if they strike a hole, ditch, or other irregularity.

To prevent injury or damage from rolling bales, discharge bales on level ground or in such a manner that bales will not roll.



EX.20ACCC.D -19-13AUG96

-UN-30APR92
E36866



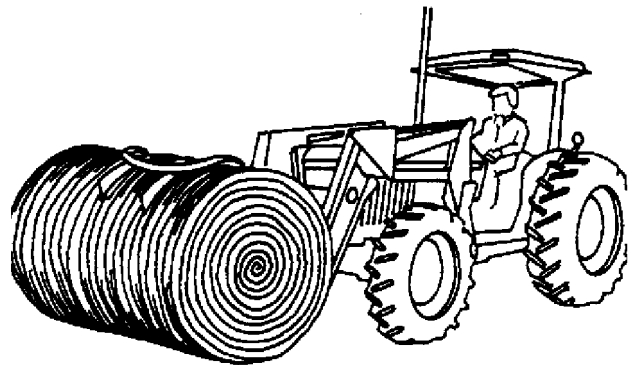
HANDLE ROUND BALES SAFELY

To help prevent personal injury, do not handle round bales without approved John Deere Round Bale Handling attachments.

Improper use of loaders to handle round bales can result in serious injury or death to the tractor/loader operator. This could be caused by the bale rolling back down the loader into the operator's station.

To attain optimum stability and visibility:

- Do not handle bales that exceed the bale weight limitations of the loader.
- Carry the bale slowly and as low as possible to the ground.
- Operate the loader controls smoothly, avoiding jerky operation.
- When handling round bales on a slope, always approach the bale with the tractor facing uphill.
- Never use the tractor/loader to stop a rolling bale.



W7718 -UN-06OCT88

EX,435C,D -19-01SEP88



Suggest:

For more complete manuals. Please go to the home page.

<https://www.ebooklibonline.com>

If the above button click is invalid. Please download this document first, and then click the above link to download the complete manual.

Thank you so much for reading

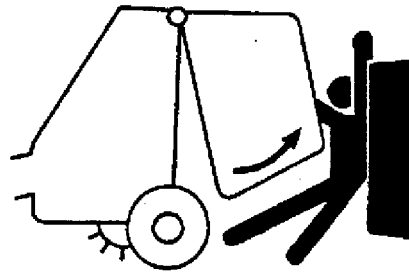


KEEP RIDERS OFF MACHINE



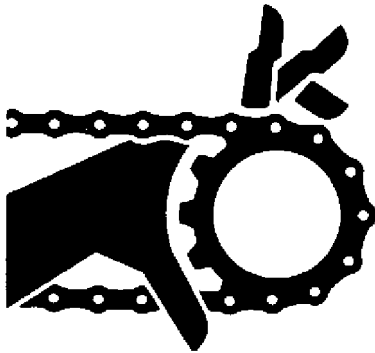
-UN-23AUG88

TS249



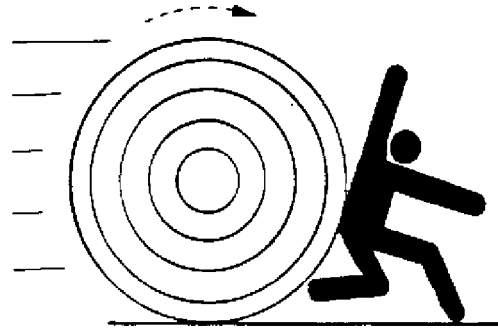
-UN-12SEP88

E32162



-UN-23AUG88

TS284



-UN-30APR92

E36866

Keep riders off.

Riders on machine are subject to injury such as being struck by foreign objects and being thrown off of the machine. Riders can also get struck by baler gate, caught in conveyor assembly or crushed by bales.

EX,20ACCC,E -19-01AUG96



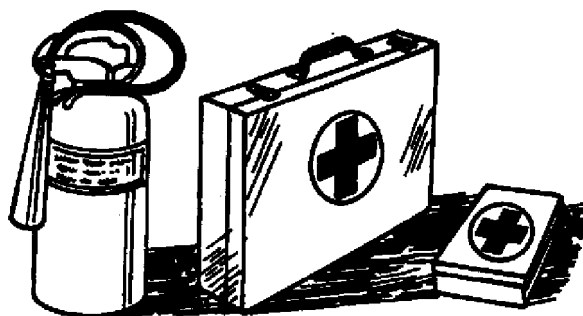
PREPARE FOR EMERGENCIES

Be prepared if a fire starts.

1. Eject bale immediately from baler and accumulator.
2. Move tractor, baler and accumulator upwind 9 m (30 ft) away from flammable material.
3. Raise baler gate and engage gate lock.
4. Use fire extinguisher or other water supply to put out fire.

Keep a first aid kit handy.

Keep emergency numbers for doctors, ambulance service, hospital, and fire department near your telephone.



-UN-23AUG88

TS291

EX,20ACCC,F -19-01AUG96

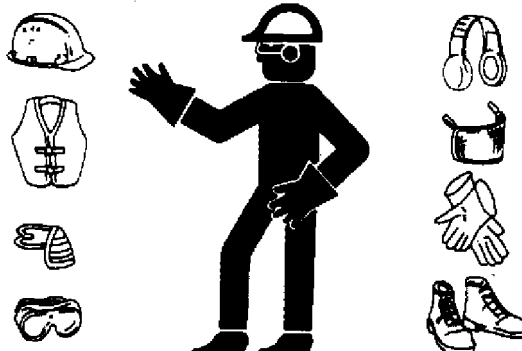
WEAR PROTECTIVE CLOTHING

Wear close fitting clothing and safety equipment appropriate to the job.

Prolonged exposure to loud noise can cause impairment or loss of hearing.

Wear a suitable hearing protective device such as earmuffs or earplugs to protect against objectionable or uncomfortable loud noises.

Operating equipment safely requires the full attention of the operator. Do not wear radio or music headphones while operating machine.



-UN-23AUG88

TS206

DX,WEAR -19-10SEP90

<https://www.ebooklibonline.com>

Hello dear friend!

Thank you very much for reading.

Enter the link into your browser.

The full manual is available for immediate download.

<https://www.ebooklibonline.com>