

T44042

KEY	PART NO.	PART NAME	QTY	Serial No.	REMARKS
1	19H2036	CAP SCREW	1		1/4" X 7/8"
2	12H302	LOCK WASHER	1		1/4"
3	R64764	WASHER	1		(SUB FOR L186T)
4	AR65864	FILLER CAP	1		
5	AR45530	SCREW WITH WASHER	7	____-598042	(SUB AR103811)
5	AR103811	SCREW WITH WASHER	7		(SUB FOR AR100124)
6	AR71130	VALVE COVER	1		
7	T20075	GASKET	1	____-598042	(SUB (8) AR103811 AND AR100596)
7	AR100596	GASKET	1	598043-____	

**<https://www.ebooklibonline.com>**

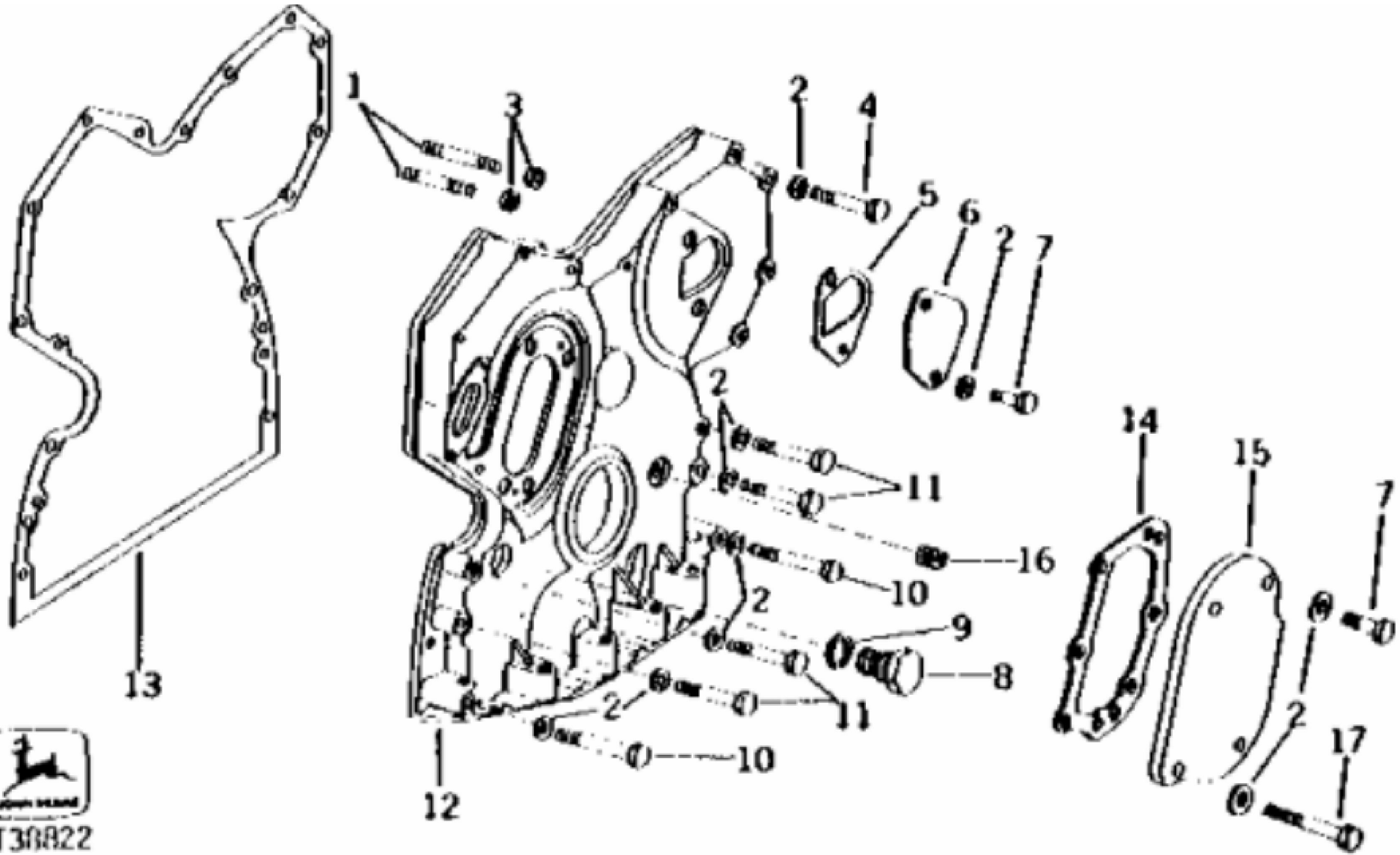
Hello dear friend!

Thank you very much for reading.

Enter the link into your browser.

The full manual is available for immediate download.

**<https://www.ebooklibonline.com>**



T30822

John Deere > Construction And Forestry >CRAWLER LOADER >555 - CRAWLER LOADER >555 Crawler Loader >4 ENGINE 4 >CAMSHAFTS AND VALVE ACTUATING MEANS 0402 >0402-3 - TIMING GEAR COVER [01D25]

KEY	PART NO.	PART NAME	QTY	Serial No.	REMARKS
1	R122226	STUD	2		(SUB FOR R122226)
2	24H1304	WASHER	AR		13/32" X 23/32" X 0.120"
3	14H812	NUT	2		3/8"
4	19H2549	CAP SCREW	6		3/8" X 1-7/8"
5	T20364	GASKET	1	____-483159	(SUB R78366)
5	R78366	GASKET	1		(SUB FOR R69260)
6	R126041	COVER	1		(SUB FOR T20362)
7	19H2284	CAP SCREW	3		3/8" X 7/8"
7	R124277	CAP SCREW	2		(USE WITH R126041) (SUB FOR R122618, THIS APPLICATION)
8	T27657	FITTING PLUG	1		
9	A4827R	WASHER	1		
10	19H3031	CAP SCREW	2		3/8" X 2-1/2"
11	19H2549	CAP SCREW	4		3/8" X 1-7/8"
12	AR58196	COVER	1		(MARKED R52880) (ALSO ORDER T20272, T20273, (3) 19H2284, 19H1726, (4) 24H1304 AND 15H275)
13	T20155	GASKET	1		
14	T20273	GASKET	1		
15	T20272	COVER	1		
16	15H275	PIPE PLUG	1		1/4"
17	19H1726	CAP SCREW	1		3/8" X 2-1/4"



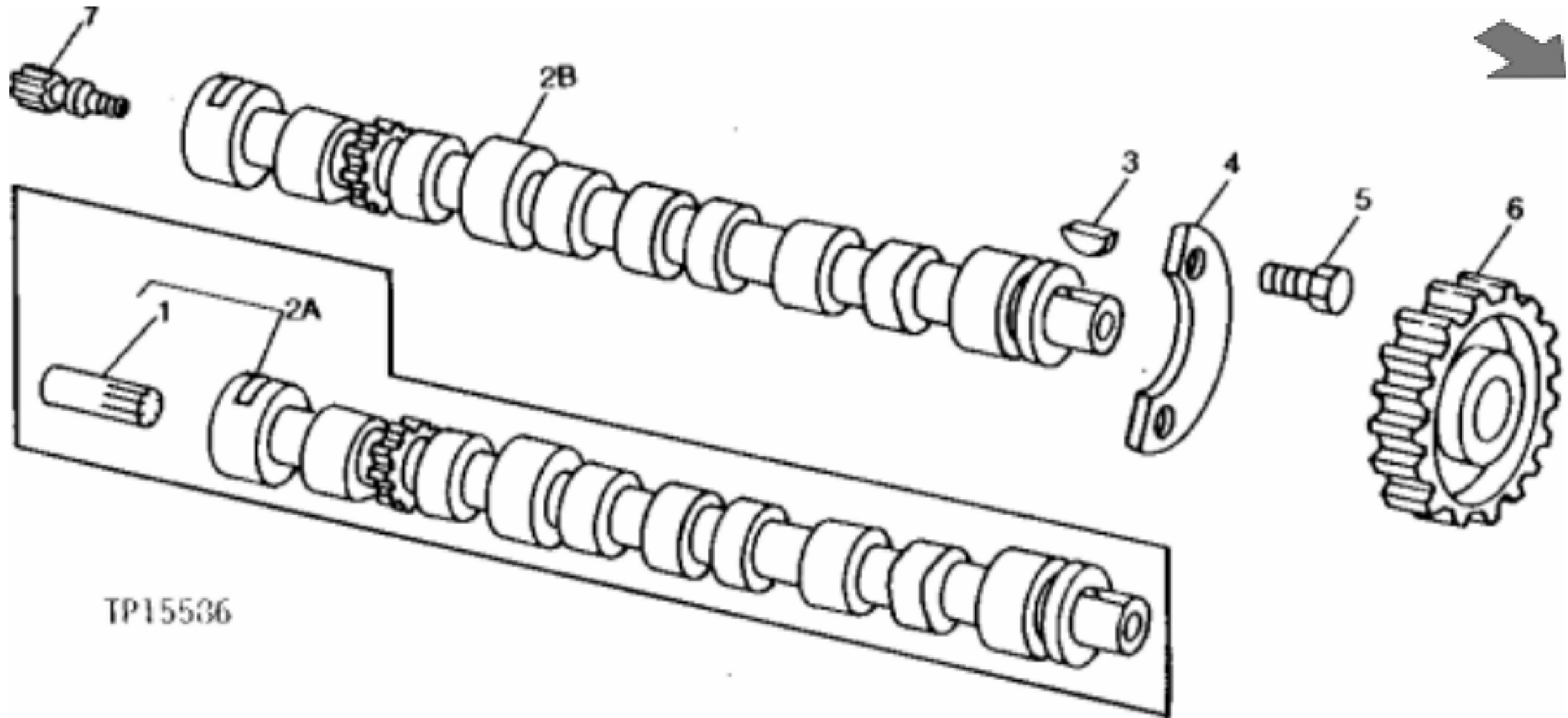
**Suggest:**

**For more complete manuals. Please go to the home page.**

**<https://www.ebooklibonline.com>**

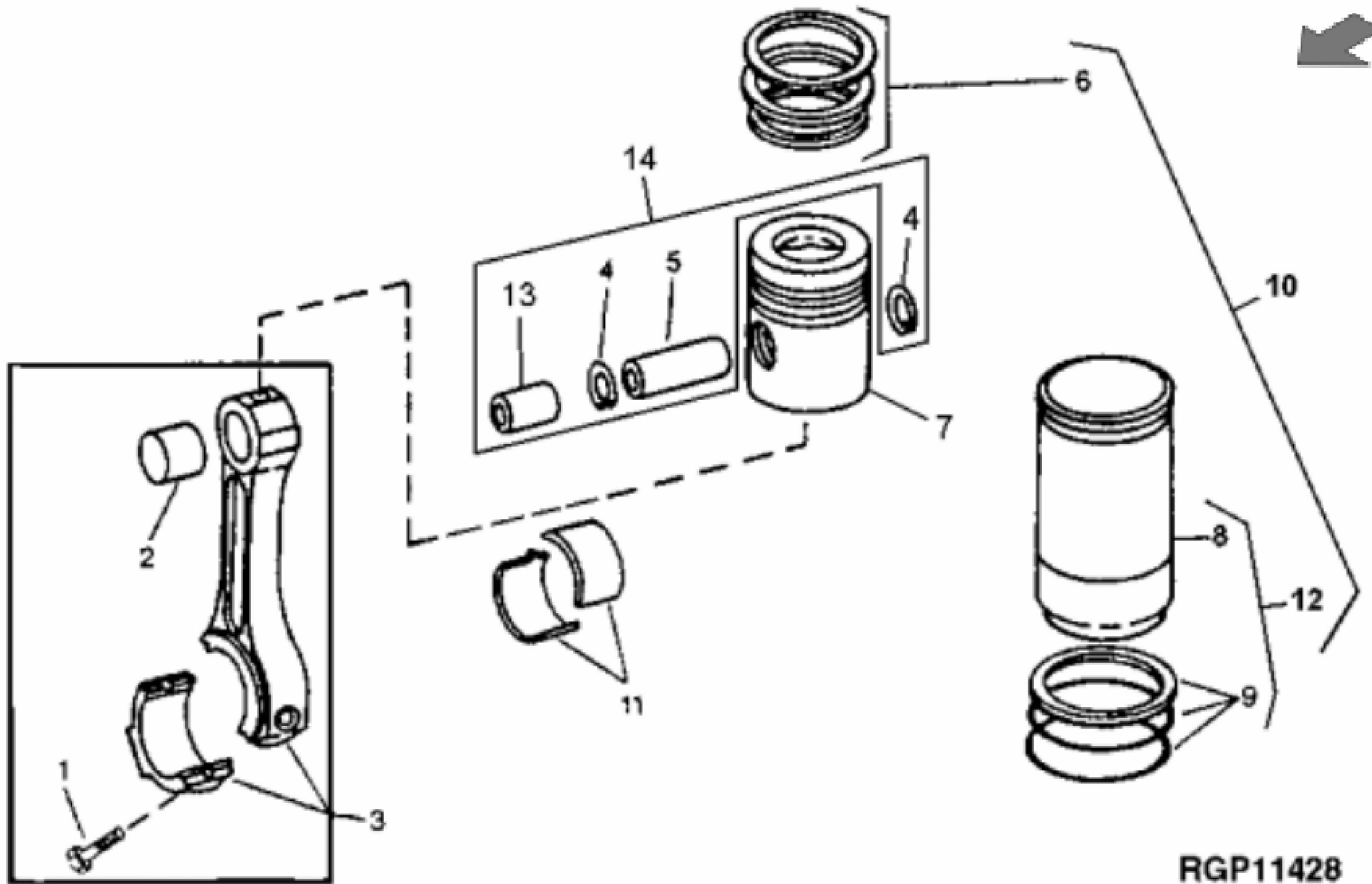
**If the above button click is invalid. Please download this document first, and then click the above link to download the complete manual.**

**Thank you so much for reading**



TP15536

KEY	PART NO.	PART NAME	QTY	REMARKS	
1	T31947	GEAR	1	(USE WITH AT30965)	
2A	AT30965	CAMSHAFT	1	(MARKED T20014) (SUB R82820 AND R81515)	
2B	R82820	CAMSHAFT	1		
3	T28041	SHAFT KEY	1		
4	T20072	PLATE	1		
5	19H2676	CAP SCREW	2	3/8" X 1"	
6	T20070	HELICAL GEAR	1	(48 TEETH)	
7	R81515	GEAR	1		



RGP11428

**<https://www.ebooklibonline.com>**

Hello dear friend!

Thank you very much for reading.

Enter the link into your browser.

The full manual is available for immediate download.

**<https://www.ebooklibonline.com>**