

MP5630

John Deere > Turf And Utility >MOWER, RIDING >SX95 - MOWER, RIDING >RX63, RX73, RX75, RX95, SX75 and SX95 Riding Mowers >20 ENGINE >20-1 - RX63 CYLINDER BLOCK, CYLINDER HEAD AND MUFFLER [A15]

KEY	PART NO.	PART NAME	QTY	REMARKS
1	PT13713	SEAL	1	(E)
2	M73291	SCREW	2	
3	M73288	COVER	1	
4	M97293	GASKET	1	(SUB FOR M73290)
5	M75091	PLATE	1	
6	M73292	SCREW	2	
7	M73289	VALVE	1	BREATHER
8	M73264	ENGINE CYLINDER HEAD GASKET	1	(E)
9	M75088	CYLINDER HEAD	1	
10	M71910	BEARING	1	
11	AM104189	CRANKCASE	1	
12	AM108997	KIT	2	(SUB FOR M73272)
13	AM108997	PLATE	1	BOLT RETAINER, (SUB FOR M72373)
14	AM104187	MUFFLER	1	
15	M73271	GASKET	1	(E) (SUB FOR M75090)
16	M71947	SCREW	1	
17	M73320	SHROUD	1	
18	M121248	BOLT	8	(SUB FOR M71889)
19	M71945	COVER	1	
..	AM102413	ENGINE	1	COMPLETE RECOIL START (6 HP) (FA210V-AS00) (SUB AM106232 SHORT BLOCK)
..	AM106232	SHORT BLOCK ASSEMBLY	1	
..	AM109309	GASKET KIT	1	ENGINE (GASKETS INCLUDED ARE INDICATED ON FOLLOWING PAGES) (SUB FOR AM106233)

<https://www.ebooklibonline.com>

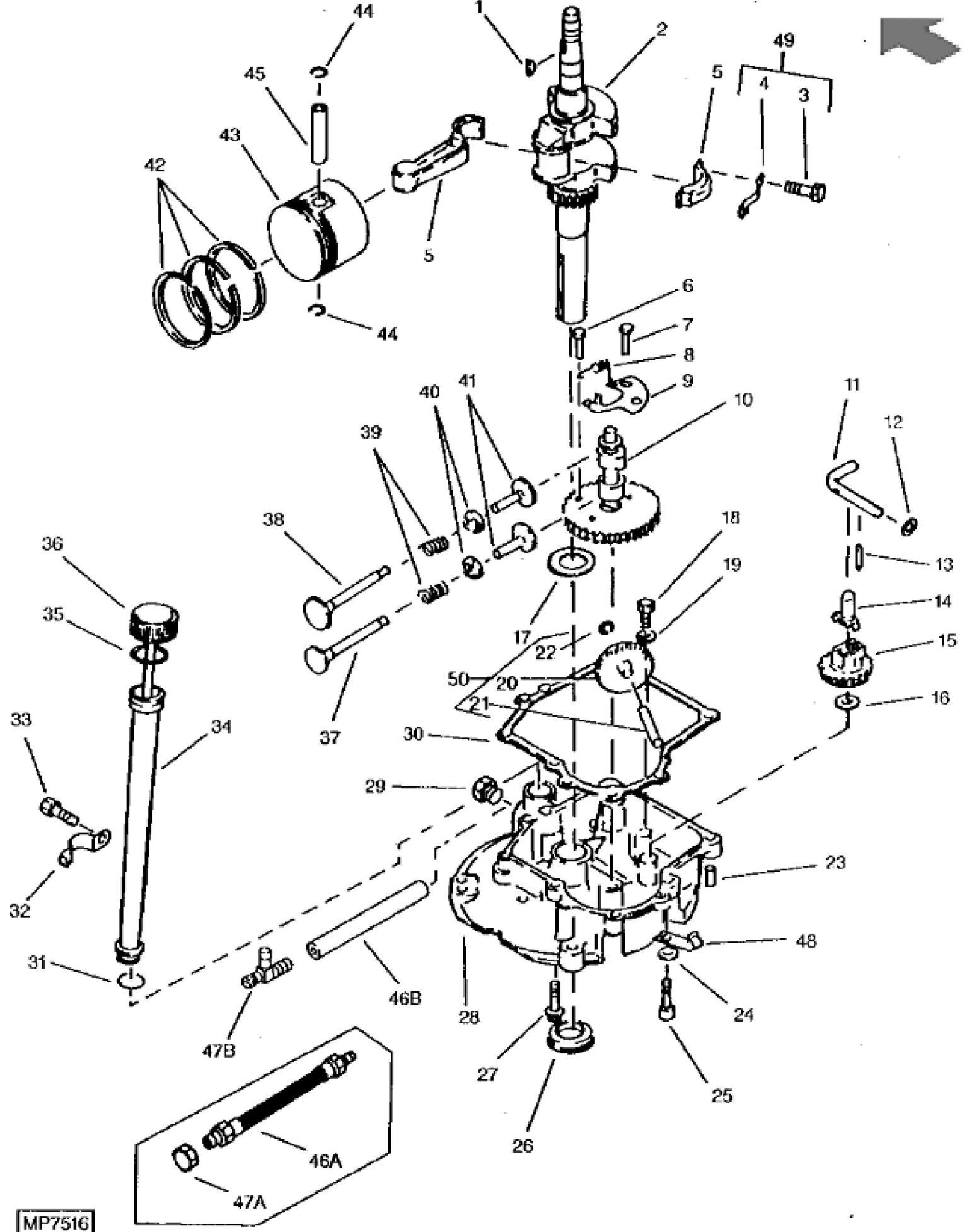
Hello dear friend!

Thank you very much for reading.

Enter the link into your browser.

The full manual is available for immediate download.

<https://www.ebooklibonline.com>

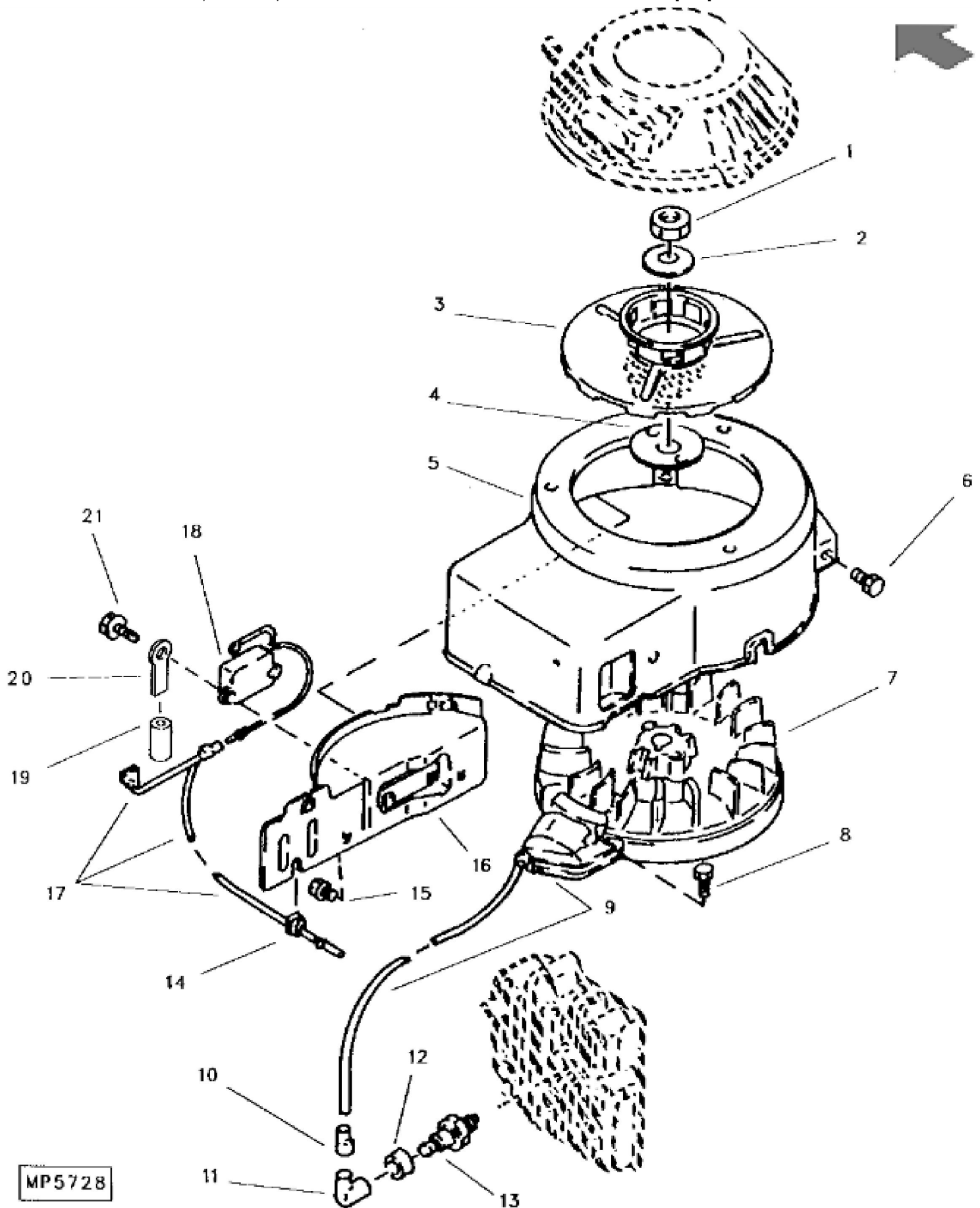


MP7516

John Deere > Turf And Utility >MOWER, RIDING >SX95 - MOWER, RIDING >RX63, RX73, RX75, RX95, SX75 and SX95 Riding Mowers >20 ENGINE >20-2 - RX63 CRANKCASE, PISTON, CAMSHAFT, GOVERNOR, OIL SLINGER, DIPSTICK AND ENGINE BASE [A16]

KEY	PART NO.	PART NAME	QTY	REMARKS
1	M75094	KEY	1	
2	M73285	CRANKSHAFT	1	
3	BOLT	2	(ORDER AM116797)
4	LOCK WASHER	1	(ORDER AM116797)
5	AM103700	CONNECTING ROD	1	INCLUDES BOLTS
6	M73276	PIN	1	
7	M73277	PIN	2	
8	M73278	SPRING	1	
9	M73275	PLATE	1	AUTOMATIC COMPRESSION RELEASE
10	AM104188	CAMSHAFT	1	COMPLETE
11	PT12028	ARM	1	
12	24M7088	WASHER	1	6.600 X 12 X 1.600 MM
13	M88461	PIN	1	
14	PT9996	SLEEVE	1	
15	AM103705	GOVERNOR	1	
16	M95856	WASHER	1	(SUB FOR PT12218)
17	M73286	SPACER	1	
18	M70271	BOLT	1	
19	M118372	WASHER	1	(SUB FOR M70272)
20	OIL SLINGER	1	(ORDER AM109203)
21	SHAFT	1	(ORDER AM109203)
22	M118373	WASHER	1	
23	PT12316	DOWEL PIN	2	
24	M73307	WASHER	1	
25	M73309	BOLT	1	
26	M73308	SEAL	1	(E)
27	M73305	BOLT	6	
28	M73303	COVER	1	CRANKCASE
29	M73312	PLUG	1	
30	M97292	GASKET	1	(SUB FOR M73304)
31	M88478	O-RING	1	(E)
32	M77513	CLAMP	1	
33	M73971	BOLT	1	
34	M70105	FILLER NECK	1	

KEY	PART NO.	PART NAME	QTY	REMARKS
35	M88482	GASKET	1	(E)
36	M77512	DIPSTICK	1	WITH CAP
37	M71900	EXHAUST VALVE	1	
38	M73274	INTAKE VALVE	1	
39	M71901	SPRING	2	
40	M71902	PLATE	2	
41	M71903	TAPPET	2	
42	M73282	PISTON RING KIT	1	STANDARD
42	M73283	PISTON RING KIT	AR	OVERSIZE .25 MM (.01") (NO LONGER AVAILABLE)
42	M73284	PISTON RING KIT	AR	OVERSIZE .50 MM (.02")
43	M73279	PISTON	1	STANDARD
43	M73280	PISTON	AR	OVERSIZE .25 MM (.01") (NO LONGER AVAILABLE)
43	M73281	PISTON	AR	OVERSIZE .50 MM (.02")
44	PT12027	SNAP RING	2	
45	M71905	PISTON PIN	1	
46A	AM104031	HOSE	1	OIL DRAIN, (SUB AM107911 AND M76926)
46B	M76926	HOSE	1	(USE WITH DRAIN VALVE AM107911)
47A	M48867	PIPE PLUG	1	(USE WITH AM104031)
47B	AM107911	DRAIN VALVE	1	(USE WITH M76926 HOSE)
48	M77511	CLAMP	1	FUEL TANK TO FUEL FILTER LINE
49	AM116797	KIT	1	BOLT AND RETAINER, (SUB FOR (2) M71970 AND M71908)
50	AM109203	KIT	1	OIL SLINGER, (SUB FOR M73306, M70269 AND M70270)



MP5728



Suggest:

For more complete manuals. Please go to the home page.

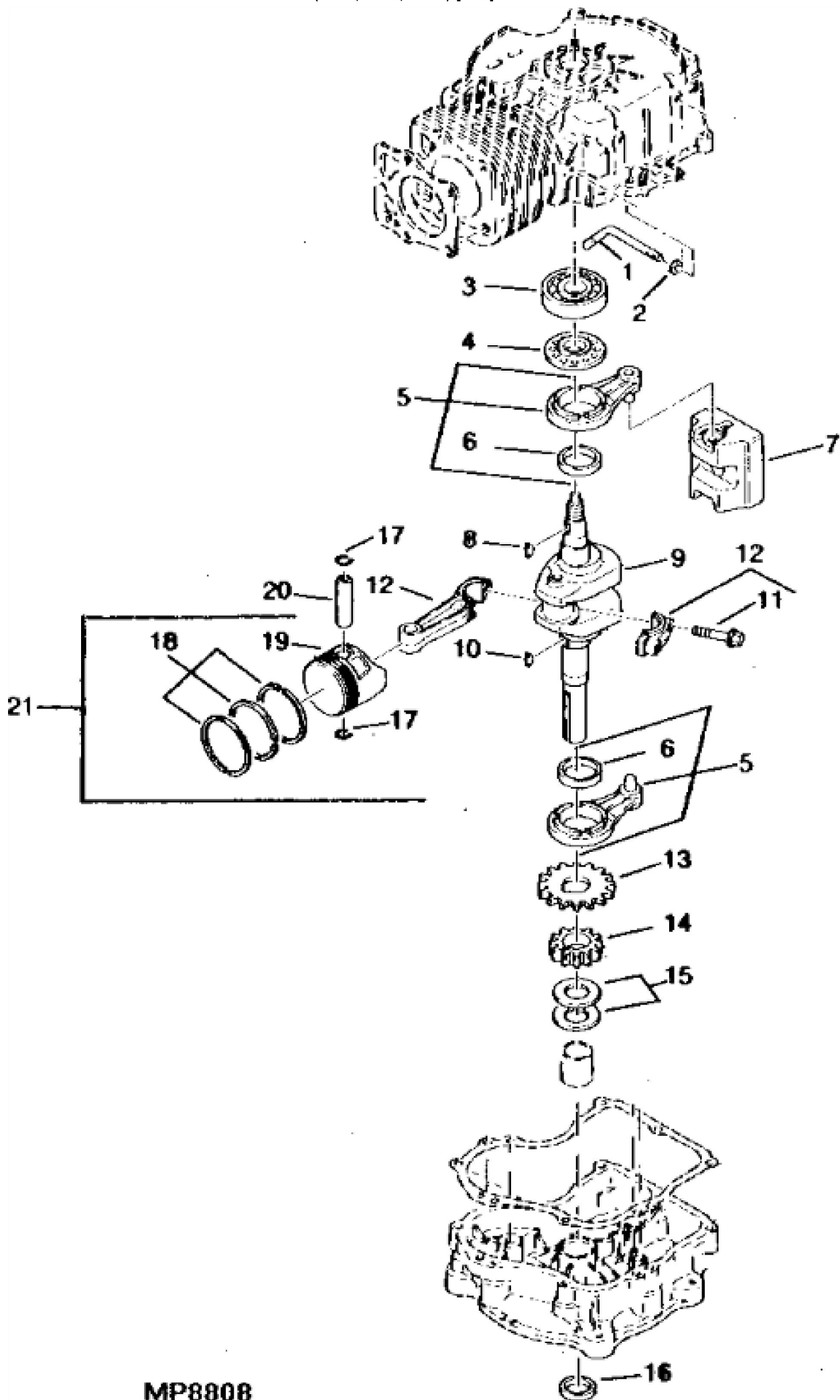
<https://www.ebooklibonline.com>

If the above button click is invalid. Please download this document first, and then click the above link to download the complete manual.

Thank you so much for reading

John Deere > Turf And Utility >MOWER, RIDING >SX95 - MOWER, RIDING >RX63, RX73, RX75, RX95, SX75 and SX95 Riding Mowers >20 ENGINE >20-4 - RX63 FLYWHEEL, SHROUD, BLOWER HOUSING AND ENGINE ELECTRICAL PARTS [A18]

KEY	PART NO.	PART NAME	QTY	REMARKS
1	M71936	NUT	1	
2	M71937	WASHER	1	
3	M71940	PULLEY	1	AND SCREEN
4	M71941	SPACER	AR	
5	M77510	HOUSING	1	
6	19M7300	CAP SCREW	5	M6 X 10
7	M73314	FLYWHEEL	1	
8	19M7373	CAP SCREW	2	M5 X 20
9	M73315	ELECTRICAL COIL	1	IGNITION
10	PT10001	GROMMET	1	
11	PT9999	CAP	1	
12	PT10000	COVER	1	
13	M71939	SPARK PLUG	1	(NGK BMR6A)
14	M71938	GROMMET	1	
15	19M6614	CAP SCREW	2	M6 X 12
15	24M7274	WASHER	2	6 X 12 X 1 MM
16	M77514	HOUSING	1	
17	M73316	WIRING LEAD	1	
18	PT13723	IGNITOR	1	
19	PT11217	SLEEVE	AR	(SUB FOR M74047)
20	M77753	CLAMP	1	
21	21M7271	SCREW	2	M5 X 16



<https://www.ebooklibonline.com>

Hello dear friend!

Thank you very much for reading.

Enter the link into your browser.

The full manual is available for immediate download.

<https://www.ebooklibonline.com>