

# **CLAAS**



**ARION 640-630-620-610 C.I.S.  
ARION 540-530-520-510 C.I.S.**

## **Operator's manual**

***SERVICE & PARTS***

## ABOUT THIS OPERATOR'S MANUAL

6543

This is the original operator's manual. It will simply be referred to as the "operator's manual" throughout this document

This operator's manual complies with the regulations currently in force in the first country the tractor has been delivered to.

This operator's manual contains the instructions for using, adjusting, servicing, cleaning and transporting the tractor. It is essential to be familiar with all of these instructions in order to:

- Improve the performance of the tractor
- Increase the tractor's availability
- Extend the service life of the tractor
- Ensure the correct working conditions in terms of both safety and comfort

If any maintenance operations are missed or if the tractor is used incorrectly, the following is possible:

- An increased safety risk
- Premature wear of the tractor
- A reduction in tractor performance
- Loss of output and time

Have the tractor serviced regularly by an approved CLAAS distributor.

This operator's manual can be considered contractual. CLAAS has a policy of continuous technical improvement to all its products, and therefore reserves the right to change without notice and at any time the details contained in this operator's manual.

The description of the models contained in this operator's manual was established from technical specifications known at the time this operator's manual was written. The operator's manual contains all of the equipment (standard or optional) that exists for these models. The presence of this equipment in the tractor depends on the tractor version and options chosen by the purchaser and the country of sale for this tractor.

Servicing operations during the warranty period are mandatory; failure to carry them out will nullify the contractual warranty.

Failure to observe the instructions for use and maintenance of the tractor as described in this operator's manual definitively excludes any possibility of recourse to the CLAAS warranty system.

The instruction and warning plates affixed to the tractor give important information about possible risks of use. Following these instructions will guarantee your safety!

Front/rear tools have a separate operator's manual.

The CLAAS distribution network is available to respond to any questions that you may have relating to the content of this operator's manual.

### **Important information concerning this operator's manual**

Important information concerning this operator's manual appears at the end of the manual:

**<https://www.ebooklibonline.com>**

Hello dear friend!

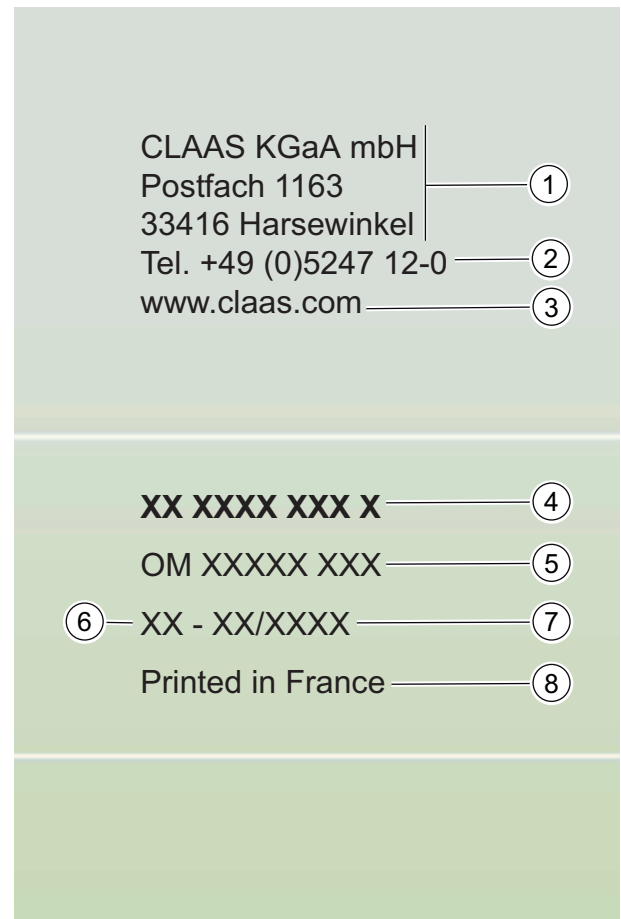
Thank you very much for reading.

Enter the link into your browser.

The full manual is available for immediate download.

**<https://www.ebooklibonline.com>**

- 1 – Address of CLAAS company headquarters
- 2 – Phone number to call if necessary
- 3 – Address of CLAAS company website
- 4 – Reference of this operator's manual
- 5 – Designation of this operator's manual
- 6 – Language code for this operator's manual
- 7 – Publication date of this operator's manual
- 8 – Country where this operator's manual was printed



000msn00gm

The reference, designation and publication date of this operator's manual also appear at the bottom of each page of the operator's manual. The reference of the operator's manual should be quoted in any query concerning the operator's manual and when ordering additional copies.

### Classification into modules

The sections in this manual are categorised into modules, as far as the contents permit. The structure of these modules is identical in each section.

The different product groups have different module structures. CLAAS always endeavours to retain these module structures in each document.

### Direction indications

Indications such as front, rear, right-hand and left-hand are always in the context of the direction of travel of the tractor.

In the illustrations, the direction of travel may be indicated by a direction arrow.

### Text and illustrations

Photos and graphics have been kept neutral wherever possible. If this is not the case, additional information is added underneath the illustration.

Texts and illustrations have been kept neutral wherever possible. If this is not the case, the preceding subtitle takes into account the differences.

### Highlighting dangers and warnings

In the operator's manual, all points concerning personal safety and the safe use of the tractor are indicated by the following symbols. Ensure that other users are also made aware of all safety advice.



## CAUTION

Instructions which must be strictly followed to prevent any risk of personal injury.

---

**Important:** *Instructions which must be strictly followed to prevent damage to the tractor and its environment.*

**Note:** *Instructions to be followed to ensure more efficient/suitable use of the tractor*

### Specific terminology

In this operator's manual, "tool" refers to any equipment hitched to the tractor, whether carried or towed.

Likewise, the term "risk zone" refers to all locations with an increased risk of accident.

- Around the tractor and the tools hitched to the tractor
- Between the tractor and the carried/towed tools
- In the deployment or movement area of the tools

### Technical specifications

The technical specifications, dimensions and weights are provided on a non-binding basis. CLAAS reserves the right to modify them as part of the technical development, subject to errors.

### Optional and additional equipment

Optional equipment consists of tractor equipment variants. Different variants are available but only one can be fitted at a time.

Additional equipment consists of tractor equipment variants which can be fitted as accessories but which are not part of the tractor's standard equipment.

The two terms refer to the possible variants. Standard equipment and equipment variants may vary according to the country.

**VALIDITY OF THE OPERATOR'S MANUAL**

4449

This operator's manual is valid for the following tractors:

Type of tractor	Tractor serial number	
	From	To
ARION 500 ARION 600	A1801461 A1902831	

The operator's manual describes the possible equipment for your tractor. Your tractor's equipment is listed in your order confirmation.

**UNITS**

The units used in this document are in line with international system of units:

<b><i>Physical</i></b>	<b><i>Unit Name</i></b>	<b><i>Symbol of unity</i></b>	<b><i>Multiples and sub-multiples of the unit</i></b>
Size	Metre	m	mm - cm
Volume	Cubic meter	m <sup>3</sup>	cm <sup>3</sup> - dm <sup>3</sup>
	Liter	l	ml - cl
Angle	Degree	°	
Time	Second	s	
	Minute	min	
	Hour	h	
Linear speed	Kilometer per hour	km/h	m/h
Rotation speed	Revolution per minute	1/min	
Weight	Kilogram	kg	g
Forced	Newton	N	
Torque	Newton meter	Nm	
Pressure	Pascal	Pa	
Power	Watt	W	kW
Flow rate	Liter per minute	l/min	
Temperature	Degree Celsius	°C	
Power voltage	Volt	V	mV
Electric intensity	Ampere	A	mA
Resistor	Ohm	Ω	kΩ
Sound level	Bel	B(A)	dB(A)







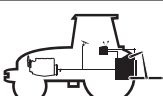

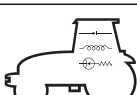




The date format used in this document also complies with the international system:

Year-Month-Day

Example: 2010-07-15

## CHAPTER SYMBOLS

5887

REF	CHAPTERS	SYMBOLS
A	IDENTIFICATION - CERTIFICATION - SAFETY	
B	CAB	
C	ELECTRICAL SERVICES	
D	ENGINE	
E	TRANSMISSION	
F	FRONT AXLE	
G	REAR EQUIPMENT	
H	FRONT EQUIPMENT	
I	CLAAS INFORMATION SYSTEM	
J	WHEELS AND TYRES	
K	CHARACTERISTICS	
L	MAINTENANCE	
M	OPERATIONS THAT ARE MANDATORY UNDER THE GUARANTEE	

---

# CONTENTS

## A - IDENTIFICATION - CERTIFICATION - SAFETY

<b>1</b>	<b>TRACTOR INFORMATION PLATE</b> .....	<b>A. 2</b>
<b>2</b>	<b>TRACTOR POWER LABEL</b> .....	<b>A. 4</b>
<b>3</b>	<b>MOTOR INFORMATION PLATE</b> .....	<b>A. 5</b>
<b>4</b>	<b>CAB IDENTIFICATION PLATE</b> .....	<b>A. 6</b>
<b>5</b>	<b>EUROPEAN REGULATION</b> .....	<b>A. 7</b>
<b>6</b>	<b>SAFETY</b> .....	<b>A. 8</b>
6.1	SAFETY INSTRUCTIONS .....	<b>A. 8</b>
6.2	SAFETY STICKERS WITH WARNING PICTOGRAMS .....	<b>A. 23</b>

## B - CAB

<b>1</b>	<b>OPERATING AND WORKING ENVIRONMENT</b> .....	<b>B. 2</b>
1.1	INSTRUMENTS AND CONTROLS (DRIVING POSITION) .....	<b>B. 2</b>
1.2	INSTRUMENTS AND CONTROLS (PANEL) .....	<b>B. 4</b>
1.3	STOWAGE AND ACCESSORIES .....	<b>B. 5</b>
<b>2</b>	<b>LIGHTING, INDICATORS AND SAFETY</b> .....	<b>B. 6</b>
2.1	DESCRIPTION .....	<b>B. 6</b>
2.2	LOW/HIGH BEAMS AND HORN .....	<b>B. 9</b>
2.3	WORKING LIGHTS AND ROTATING BEACON .....	<b>B. 10</b>
2.4	OVERHEAD LIGHT .....	<b>B. 11</b>
2.5	REAR VIEW MIRRORS .....	<b>B. 11</b>
2.6	WARNING TRIANGLE .....	<b>B. 12</b>
<b>3</b>	<b>STARTING CONTACT</b> .....	<b>B. 13</b>
<b>4</b>	<b>MULTIFUNCTION ARMREST</b> .....	<b>B. 14</b>
<b>5</b>	<b>SEATS</b> .....	<b>B. 15</b>
5.1	DRIVER'S SEAT .....	<b>B. 15</b>
5.2	PASSENGER SEAT .....	<b>B. 17</b>
<b>6</b>	<b>STEERING WHEEL</b> .....	<b>B. 19</b>
<b>7</b>	<b>INSTRUMENT PANEL</b> .....	<b>B. 20</b>
7.1	DESCRIPTION .....	<b>B. 20</b>
7.2	OPERATION .....	<b>B. 22</b>
7.3	OPERATION .....	<b>B. 25</b>
7.4	CALIBRATION .....	<b>B. 26</b>
<b>8</b>	<b>DISPLAY</b> .....	<b>B. 28</b>
8.1	TRANSMISSION DISPLAY .....	<b>B. 28</b>

---

<b>9</b>	<b>HINGED PANELS AND WINDOWS .....</b>	<b>B. 29</b>
<b>10</b>	<b>SIGHT .....</b>	<b>B. 33</b>
<b>11</b>	<b>HEATING - VENTILATION - MANUAL AIR CONDITIONING .....</b>	<b>B. 34</b>
11.1	DESCRIPTION .....	B. 34
11.2	OPERATION .....	B. 34
<b>12</b>	<b>HEATING/VENTILATION/AUTOMATIC CLIMATE CONTROL .....</b>	<b>B. 39</b>
12.1	DESCRIPTION .....	B. 39
12.2	OPERATION .....	B. 39
<b>13</b>	<b>CAB SUSPENSION .....</b>	<b>B. 43</b>

## **C - ELECTRICAL SYSTEM**

<b>1</b>	<b>CHARACTERISTICS .....</b>	<b>C. 2</b>
<b>2</b>	<b>TRAILER/IMPLEMENT LIGHT SOCKET .....</b>	<b>C. 3</b>
<b>3</b>	<b>ELECTRIC CABINET SUPPLY SOCKET .....</b>	<b>C. 4</b>
<b>4</b>	<b>EVENT COUNTER SOCKET .....</b>	<b>C. 5</b>
<b>5</b>	<b>ISO SOCKET .....</b>	<b>C. 6</b>
<b>6</b>	<b>ISOBUS SOCKET .....</b>	<b>C. 7</b>
<b>7</b>	<b>PROVISION FOR THE INSTALLATION OF A CONTROL CASING IN THE CAB .....</b>	<b>C. 8</b>
7.1	FITTING BOX MOUNTING .....	C. 8
7.2	CABLE ROUTING .....	C. 8
<b>8</b>	<b>BATTERY .....</b>	<b>C. 9</b>
8.1	BATTERY COMPARTMENT .....	C. 9
8.2	BATTERY MASTER SWITCH .....	C. 10
<b>9</b>	<b>FUSES AND RELAYS .....</b>	<b>C. 11</b>
9.1	RECOMMENDATIONS .....	C. 11
9.2	CAB-MOUNTED SERVICES FUSE BOX .....	C. 11
9.3	CAB TOP FUSE BOX .....	C. 14
9.4	PRIMARY SERVICES FUSE BOX .....	C. 17

## **D - ENGINE**

<b>1</b>	<b>CHARACTERISTICS .....</b>	<b>D. 2</b>
<b>2</b>	<b>DISPLAYS .....</b>	<b>D. 8</b>
2.1	INSTRUMENT PANEL .....	D. 8
<b>3</b>	<b>SAFETY .....</b>	<b>D. 9</b>
3.1	OPERATION .....	D. 9
3.2	INSTRUMENT PANEL .....	D. 9
3.3	RECOMMENDATIONS .....	D. 9
<b>4</b>	<b>ENGINE HOOD .....</b>	<b>D. 11</b>
4.1	ONE-PIECE HOOD .....	D. 11
4.2	SIDE PANELS .....	D. 11

---

<b>5</b>	<b>ENGINE CONTROL .....</b>	<b>D. 12</b>
5.1	STARTING THE ENGINE .....	D. 12
5.2	USING THE ACCELERATOR PEDAL AND LEVER .....	D. 16
5.3	STOPPING THE ENGINE .....	D. 18
<b>6</b>	<b>CLAAS POWER MANAGEMENT .....</b>	<b>D. 19</b>
<b>7</b>	<b>FUEL .....</b>	<b>D. 20</b>
7.1	RECOMMENDATIONS .....	D. 20
7.2	BLEEDING AIR FROM THE INJECTION SYSTEM .....	D. 21

## **E - TRANSMISSION**

### **GEARBOX**

<b>1</b>	<b>CHARACTERISTICS .....</b>	<b>E. 4</b>
<b>2</b>	<b>FORWARD SPEEDS .....</b>	<b>E. 5</b>
<b>3</b>	<b>DISPLAY .....</b>	<b>E. 18</b>
3.1	TRANSMISSION DISPLAY .....	E. 18
3.2	INSTRUMENT PANEL .....	E. 18
<b>4</b>	<b>SAFETY .....</b>	<b>E. 20</b>
4.1	REVERSER NEUTRAL .....	E. 20
4.2	TRANSMISSION NEUTRAL .....	E. 22
4.3	PROTECTION OF MECHANICAL PARTS .....	E. 23
<b>5</b>	<b>STARTING THE TRACTOR .....</b>	<b>E. 25</b>
5.1	TRANSMISSION DISPLAY .....	E. 25
5.2	CLUTCH .....	E. 25
5.3	SELECTION OF MOVEMENT DIRECTION .....	E. 26
5.4	REVERSER PROGRESSIVITY ADJUSTMENT .....	E. 27
5.5	COUPLING/DECOUPLING FORWARD/REVERSE GEARS .....	E. 29
<b>6</b>	<b>MANUAL GEAR CHANGES .....</b>	<b>E. 31</b>
6.1	START RATIO .....	E. 31
6.2	WORK MODE .....	E. 32
6.3	ROAD MODE .....	E. 33
<b>7</b>	<b>AUTOMATIC GEAR CHANGES .....</b>	<b>E. 35</b>
7.1	SKIP SHIFT .....	E. 35
7.2	AUTOMATIC SPEED ADAPTATION (SPEED MATCHING) .....	E. 35
7.3	MANOEUVRING GEAR .....	E. 36
7.4	HEXACTIV .....	E. 38
<b>8</b>	<b>RATIO MANAGEMENT .....</b>	<b>E. 44</b>
8.1	OPERATION .....	E. 44
8.2	TRANSMISSION DISPLAY .....	E. 44

---

<b>9</b>	<b>CREEP GEAR RANGE</b> .....	<b>E. 45</b>
9.1	OPERATION .....	E. 45
9.2	OPERATION .....	E. 45

## REAR AXLE

<b>1</b>	<b>CHARACTERISTICS</b> .....	<b>E. 48</b>
<b>2</b>	<b>DIFFERENTIAL LOCK</b> .....	<b>E. 51</b>
2.1	RECOMMENDATIONS .....	E. 51
2.2	OPERATION .....	E. 51
2.3	AUTOMATIC MODE .....	E. 51
2.4	PERMANENT MODE .....	E. 52
<b>3</b>	<b>PROTECTION OF MECHANICAL PARTS</b> .....	<b>E. 54</b>
3.1	OPERATION .....	E. 54
3.2	INSTRUMENT PANEL .....	E. 54
3.3	TRANSMISSION DISPLAY .....	E. 54
<b>4</b>	<b>BRAKES</b> .....	<b>E. 55</b>
4.1	SERVICE BRAKES .....	E. 55
4.2	PARKING BRAKE .....	E. 55
4.3	HIGH PRESSURE BRAKING .....	E. 56
<b>5</b>	<b>TRAILER BRAKE</b> .....	<b>E. 58</b>
5.1	HYDRAULIC BRAKE .....	E. 58
5.2	PNEUMATIC BRAKE .....	E. 59

## F - FRONT AXLE

<b>1</b>	<b>CHARACTERISTICS</b> .....	<b>F. 2</b>
<b>2</b>	<b>PROTECTION OF MECHANICAL PARTS</b> .....	<b>F. 5</b>
2.1	OPERATION .....	F. 5
2.2	INSTRUMENT PANEL .....	F. 5
<b>3</b>	<b>FRONT AXLE ENGAGEMENT</b> .....	<b>F. 6</b>
3.1	OPERATION .....	F. 6
3.2	AUTOMATIC MODE .....	F. 6
3.3	PERMANENT MODE .....	F. 7
<b>4</b>	<b>SUSPENDED FRONT AXLE</b> .....	<b>F. 8</b>
4.1	OPERATION .....	F. 8
4.2	FIXED MODE .....	F. 8
4.3	AUTOMATIC MODE .....	F. 9

---

## G - REAR EQUIPMENT

### HYDRAULIC SYSTEMS

<b>1</b>	<b>CHARACTERISTICS .....</b>	<b>G. 4</b>
<b>2</b>	<b>OPEN CENTRE SYSTEM .....</b>	<b>G. 6</b>
2.1	ASSOCIATION BETWEEN CONTROLS/REAR PRESSURE CONNECTORS .....	G. 6
2.2	PRESSURE CONNECTORS .....	G. 8
2.3	CONTROLS .....	G. 10
2.4	CONTROL LEVERS .....	G. 10
2.5	FLOW DIVIDER .....	G. 12
2.6	DUAL ACTING/SINGLE ACTING CONVERSION .....	G. 12
<b>3</b>	<b>CLOSED CENTRE CIRCUIT .....</b>	<b>G. 13</b>
3.1	ASSOCIATION BETWEEN CONTROLS/REAR PRESSURE CONNECTORS .....	G. 13
3.2	PRESSURE CONNECTORS .....	G. 15
3.3	CONTROLS .....	G. 17
3.4	CONTROL LEVERS .....	G. 17
3.5	ADJUSTING FLOW RATE FOR MECHANICALLY-CONTROLLED SPOOL VALVES .....	G. 18
3.6	POWER BEYOND .....	G. 19
<b>4</b>	<b>STATIONARY WORKING .....</b>	<b>G. 20</b>

### REAR LIFT

<b>1</b>	<b>CHARACTERISTICS .....</b>	<b>G. 22</b>
<b>2</b>	<b>CONTROLS .....</b>	<b>G. 23</b>
<b>3</b>	<b>SAFETY .....</b>	<b>G. 25</b>
3.1	PROTECTION OF MECHANICAL PARTS .....	G. 25
3.2	WARNING LIGHT .....	G. 25
3.3	ROAD TRANSPORT SAFETY .....	G. 25
<b>4</b>	<b>USING THE LINKAGE .....</b>	<b>G. 27</b>
<b>5</b>	<b>MODE SELECTION .....</b>	<b>G. 28</b>
<b>6</b>	<b>POSITION CONTROL .....</b>	<b>G. 29</b>
<b>7</b>	<b>FORCE CONTROL .....</b>	<b>G. 30</b>
<b>8</b>	<b>UPPER LIMIT .....</b>	<b>G. 32</b>
<b>9</b>	<b>LOWERING SPEED .....</b>	<b>G. 33</b>
<b>10</b>	<b>TRANSPORT DAMPER .....</b>	<b>G. 34</b>
<b>11</b>	<b>ACTIVE WHEEL SLIP MANAGEMENT .....</b>	<b>G. 35</b>
11.1	OPERATION .....	G. 35
11.2	ADJUSTMENT .....	G. 35
11.3	OPERATION .....	G. 36

---

<b>12</b>	<b>EXTERNAL CONTROLS</b> .....	<b>G. 37</b>
12.1	OPERATION .....	G. 37
12.2	OPERATION .....	G. 37

## **REAR POWER TAKE-OFF**

<b>1</b>	<b>CHARACTERISTICS</b> .....	<b>G. 40</b>
<b>2</b>	<b>RECOMMENDATIONS</b> .....	<b>G. 41</b>
<b>3</b>	<b>CONTROLS</b> .....	<b>G. 42</b>
<b>4</b>	<b>DISPLAY</b> .....	<b>G. 43</b>
<b>5</b>	<b>PTO SPEED SELECTION</b> .....	<b>G. 44</b>
<b>6</b>	<b>OPERATION</b> .....	<b>G. 45</b>
<b>7</b>	<b>EXTERNAL CONTROLS</b> .....	<b>G. 46</b>
<b>8</b>	<b>OPERATION</b> .....	<b>G. 47</b>
<b>9</b>	<b>PTO AUTOMATION</b> .....	<b>G. 48</b>
9.1	OPERATION .....	G. 48
9.2	ADJUSTMENT .....	G. 48
<b>10</b>	<b>POWER TAKE-OFF END FITTING</b> .....	<b>G. 49</b>
<b>11</b>	<b>CONNECTING IMPLEMENTS TO THE POWER TAKE-OFF</b> .....	<b>G. 50</b>
<b>12</b>	<b>STATIONARY WORKING</b> .....	<b>G. 51</b>

## **REAR HITCH**

<b>1</b>	<b>CHARACTERISTICS</b> .....	<b>G. 54</b>
<b>2</b>	<b>RECOMMENDATIONS</b> .....	<b>G. 56</b>
<b>3</b>	<b>ADJUSTABLE LINKS</b> .....	<b>G. 58</b>
<b>4</b>	<b>UPPER LINK</b> .....	<b>G. 59</b>
4.1	MECHANICAL UPPER ROD .....	G. 59
4.2	UPPER TOP LINKAGE .....	G. 59
<b>5</b>	<b>AUTOMATIC HOOKS</b> .....	<b>G. 60</b>
<b>6</b>	<b>STABILISERS</b> .....	<b>G. 62</b>
6.1	OPERATION .....	G. 62
6.2	MECHANICAL STABILISERS .....	G. 62
6.3	SELF-LOCKING STABILISERS .....	G. 62

---

7	<b>DRAW BAR COUPLINGS</b> .....	G. 63
8	<b>SWINGING DRAWBAR</b> .....	G. 65
9	<b>TOW HOOK</b> .....	G. 67
10	<b>AUTOMATIC PICK-UP HITCH</b> .....	G. 68

## H - FRONT EQUIPMENT

### HYDRAULIC SYSTEMS

1	<b>CHARACTERISTICS</b> .....	H. 4
2	<b>FRONT PRESSURE TAPS CONTROLLED BY SPOOL VALVE 3</b> .....	H. 5
2.1	ASSOCIATION BETWEEN CONTROLS/FRONT PRESSURE CONNECTORS .....	H. 5
2.2	PRESSURE CONNECTORS .....	H. 5
2.3	OPERATION .....	H. 7
2.4	FLOW CONTROL .....	H. 8
3	<b>FRONT PRESSURE TAPS CONTROLLED BY SPOOL VALVE 7</b> .....	H. 9
3.1	ASSOCIATION BETWEEN CONTROLS/FRONT PRESSURE CONNECTORS .....	H. 9
3.2	PRESSURE CONNECTORS .....	H. 9
3.3	SAFETY .....	H. 11
3.4	PRELIMINARY OPERATIONS .....	H. 12
3.5	OPERATION .....	H. 12
3.6	MANAGEMENT OF ELECTROHYDRAULIC SPOOL VALVES .....	H. 13

### FRONT LINKAGE

1	<b>CHARACTERISTICS</b> .....	H. 18
2	<b>FRONT LINKAGE CONTROLLED BY SPOOL VALVE 1</b> .....	H. 19
2.1	CONTROLS .....	H. 19
2.2	SAFETY .....	H. 19
2.3	PRELIMINARY OPERATIONS .....	H. 20
2.4	OPERATION .....	H. 22
3	<b>FRONT LINKAGE CONTROLLED BY SPOOL VALVE 6</b> .....	H. 24
3.1	CONTROLS .....	H. 24
3.2	SAFETY .....	H. 25
3.3	PRELIMINARY OPERATIONS .....	H. 25
3.4	OPERATION .....	H. 28
3.5	EXTERNAL CONTROLS .....	H. 29
4	<b>3-POINT HITCH</b> .....	H. 30
4.1	LOWER LINKS .....	H. 30
4.2	UPPER LINK .....	H. 31
4.3	HITCHING AND UNHITCHING THE TOOL .....	H. 31

---

## FRONT POWER TAKE-OFF

1	CHARACTERISTICS .....	H. 36
2	DISPLAY .....	H. 37
3	RECOMMENDATIONS .....	H. 38
4	FRONT POWER TAKE-OFF ENGAGEMENT .....	H. 40
5	STOP OF THE FRONT POWER TAKE-OFF .....	H. 41
6	ADJUSTMENT .....	H. 42

## FRONT LOADER

1	FITTING A FRONTAL LOADER ADAPTATION FRAME .....	H. 46
2	OPERATION .....	H. 48

## I - CLAAS INFORMATION SYSTEM

1	DESCRIPTION .....	I. 2
2	OPERATION .....	I. 4
2.1	OPERATION .....	I. 4
2.2	MAIN MENU .....	I. 5
2.3	HYDRAULIC MENU .....	I. 6
2.4	ON-BOARD COMPUTER MENU .....	I. 8
2.5	TRANSMISSION WINDOW .....	I. 10
2.6	CONSUMPTION MENU .....	I. 12
2.7	MAINTENANCE MENU .....	I. 13
2.8	CONFIGURATION MENU .....	I. 18

## J - WHEELS AND TYRES

1	TYRES .....	J. 2
1.1	RECOMMENDATIONS .....	J. 2
1.2	INFLATION PRESSURE .....	J. 3
1.3	LOAD INDEX .....	J. 4
1.4	SPEED CODE .....	J. 5
2	TRACK WIDTHS .....	J. 6
2.1	SETTING THE TRACK .....	J. 6
2.2	FRONT TRACKS .....	J. 8
2.3	REAR TRACKS .....	J. 28
2.4	TYRE COMBINATIONS .....	J. 40

---

3	WHEELS .....	J. 41
---	--------------	-------

## **K - CHARACTERISTICS**

1	DIMENSIONS .....	K. 2
2	WEIGHT .....	K. 4
3	LOAD-BEARING CAPABILITIES .....	K. 6
4	MAXIMUM TOW WEIGHT AUTHORIZED .....	K. 8
5	CAPACITIES .....	K. 9
6	BALLAST .....	K. 11
6.1	BALLASTING AVAILABLE .....	K. 11
6.2	TRACTOR BALANCING .....	K. 14
7	CAB COMFORT .....	K. 17
7.1	SOUND LEVEL .....	K. 17
7.2	VIBRATION LEVEL .....	K. 18

## **L - MAINTENANCE**

1	RECOMMENDATIONS .....	L. 2
2	TOWING .....	L. 8
3	TRANSPORT .....	L. 9
4	USING A JACK .....	L. 10
5	REPLACING A WHEEL .....	L. 11
6	LOADING AND STOWING THE TRACTOR .....	L. 12
7	STORAGE .....	L. 13
8	DECOMMISSIONING AND DESTRUCTION .....	L. 15
9	FREQUENCIES .....	L. 16
9.1	SUMMARY TABLE .....	L. 16
9.2	OPERATIONS .....	L. 20
10	BLEEDING AIR FROM THE INJECTION SYSTEM .....	L. 68
11	MAINTENANCE LOGBOOK .....	L. 69

## **M - OPERATIONS THAT ARE MANDATORY UNDER THE GUARANTEE**

1	OPERATIONS MANDATORY UNDER THE TERMS OF THE CONTRACTUAL GUARANTEE .....	M. 2
1.1	PRE-DELIVERY INSPECTION .....	M. 2
1.2	HANDING OVER TO THE CUSTOMER .....	M. 2
1.3	MANDATORY ROUTINE MAINTENANCE .....	M. 2
1.4	MANDATORY INSPECTIONS .....	M. 3





# A - IDENTIFICATION - CERTIFICATION - SAFETY





**Suggest:**

**For more complete manuals. Please go to the home page.**

**<https://www.ebooklibonline.com>**

**If the above button click is invalid. Please download this document first, and then click the above link to download the complete manual.**

**Thank you so much for reading**



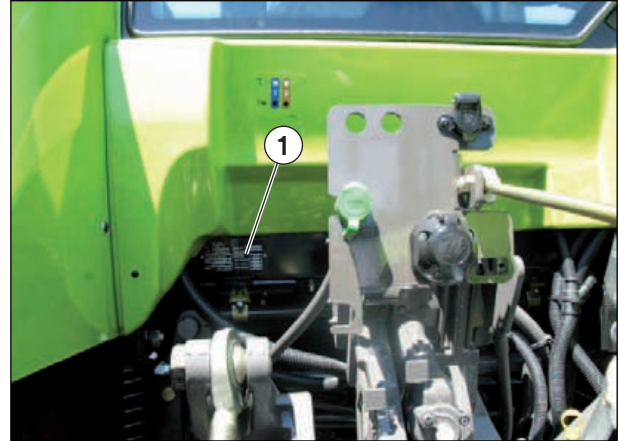
## 1 TRACTOR INFORMATION PLATE

6583

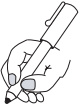

In any mail or order, always indicate the tractor identification number, tractor model, and engine serial number.

### Tractor information plate

The tractor information plate (1) is located on the left, behind the cab.



841msn44m

	<b>Type :</b>
	<b>Vehicle identification number:</b>

- A – Type of tractor.
- B – Tractor identification number (This number is also stamped on the right-hand side of the front chassis).
- C – Reception number per CE type.
- D – Maximum acceptable weight (kg).
- E – Maximum acceptable load on the front axle according to the tires (kg).
- F – Maximum load acceptable on the rear axle according to the tires (kg).
- G – Acceptable tow weight without brake (kg).
- H – Acceptable tow weight with independent brake (kg).
- I – Acceptable tow weight with inertia brake (kg).
- J – Acceptable tow weight with power brakes (hydraulic/pneumatic) (kg).

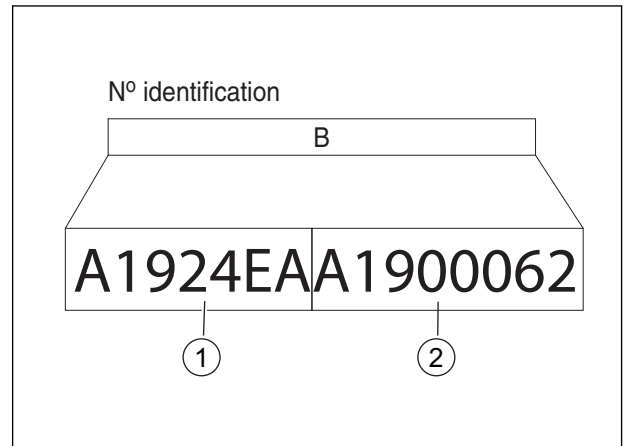
①

<b>CLAAS</b>		
Type	A	Essieu AR
N° CEE	C	F
N° identification	B	Masse remorquable admissible (Kg) sans frein
Masse totale admissible (Kg) (suivant pneumatiques)	D	G
Essieu AV	E	frein mécanique
		H
		frein à inertie
		I
		freins assistés
		J

841hsn50m



The tractor's identification number (B) is composed of the regulation type (1) and serial number (2) of the tractor (the example given opposite is completely fictitious).



841hsn06m

### Tractor regulation type

The regulation type (1) is broken down in the following manner:

Type of tractor	Engine power code	Number of drive wheels	Cabin type	Maximum tractor speed
A18	0: ARION 510 1: ARION 520 2: ARION 530 3: ARION 540	4	E: Suspended cabin	A: 40 km/h C: 50 km/h
A19	0: ARION 610 1: ARION 620 2: ARION 630 3: ARION 640			

### Tractor serial number

The tractor's serial number (2) is composed of the tractor type "A18/A19" followed by a 5 digit number.

**<https://www.ebooklibonline.com>**

Hello dear friend!

Thank you very much for reading.

Enter the link into your browser.

The full manual is available for immediate download.

**<https://www.ebooklibonline.com>**