

Page Title	Page Number
ENGINE ASSEMBLY-AD3.152 ENGINE	1
SHORT ENGINE-TABLE PK ACEC9106	2
CYLINDER BLOCK-AD3.152 ENGINE	3
CRANKSHAFT, PISTONS AND CONNECTING RODS-AD3.152 ENGINE	4
CYLINDER HEAD-AD3.152 ENGINE	5
ROCKER SHAFT-AD3.152 ENGINE	6
AIR INDUCTION AND EXHAUST SYSTEM	7
TIMING GEAR AND CAMSHAFT-AD3.152 ENGINE	8
FUEL INJECTION EQUIPMENT-AD3.152 ENGINE	9
LUBRICATING OIL SUMP-AD3.152 ENGINE	10
LUBRICATING OIL FILTER AND INTEGRAL COOLER-AD3.152 ENGINE	11
WATER PUMP, THERMOSTAT AND HEAT EXCHANGER-AD3.152 ENGINE	12
FUEL SYSTEM AND FILTER-AD3.152 ENGINE	13
ALTERNATOR POSITIONER-AD3.152 ENGINE	14
JOINTS AND GASKETS-AD3.152 ENGINE	15
HEATER KIT-COLD CLIMATE	16
ALTERNATOR	17
ALTERNATOR	18
ALTERNATOR POSITIONER	19
STARTER MOTOR-ISKRA TYPE	20
COOLING SYSTEM-FAN AND HOSES	21
COOLING SYSTEM-RADIATOR AND BRACKET	22
COOLING SYSTEM-RADIATOR AND BRACKET	23
FUEL SYSTEM	24
FUEL TANK-TRACTOR 354 SP	25
FUEL TANK-TRACTOR 354 FP	26
FUEL TANK-TRACTOR GE	27
DRY AIR FILTER	28
EXHAUST SYSTEM-TRACTOR SP - FP	29
EXHAUST SYSTEM-TRACTOR GE	30
HAND AND FOOT THROTTLE CONTROLS	31
BATTERY	32
ELECTRICAL WIRING-FRONT	33
INSTRUMENT PANEL-EQUIPMENT INSTRUMENT PANEL	34
INSTRUMENT PANEL-WITH MECANICS RISER	35
INSTRUMENT PANEL-WITH ELECTRONIC LIFT - NOT INCLUDED TRACTOR	36
ELECTRICAL WIRING-EQUIPMENT INSTRUMENT PANEL	37
ELECTRICAL WIRING-REAR	38
ELECTRICAL WIRING-REAR - NOT INCLUDED TRACTOR GE	39
ELECTRICAL WIRING-EQUIPMENT FOR LIFT	40
LIGHTING EQUIPMENT	41
LIGHTING EQUIPMENT	42
CLUTCH-O.M.G. - 11	43
CLUTCH-LUK - 11	44
CLUTCH PEDAL AND LINKAGE	45
LOWER CLUTCH P.T.O.	46
LOWER CLUTCH P.T.O.	47
FRONT CENTRE HOUSING-CLUTCH BOX	48
TRANSMISSION	49
TRANSMISSION	50
TRANSMISSION	51
TRANSMISSION-FOR NORMAL	52
GEAR BOX: CONTROLS	53
GEAR BOX: CONTROLS-FOR SHUTTLE VERSION ONLY.	54
GEAR BOX: CONTROLS-FOR SPECIAL OPTIONS VERSION ONLY	55
SHIFT LEVERS	56
REDUCER OPTION-FOR SHUTTLE VERSION ONLY: TRACTOR SP - FP - GE	57
REDUCER OPTION-UNDERDRIVE AND SHUTTLE VERSION	58
REDUCER OPTION-OVERDRIVE AND SHUTTLE VERSION	59
REDUCER OPTION-OVERDRIVE AND UNDERDRIVE VERSION	60
REDUCER OPTION-UNDERDRIVE E CREEPER VERSION	61
REDUCER OPTION-SHUTTLE AND CREEPER VERSION	62
REDUCER OPTION-OVERDRIVE AND CREEPER VERSION	63
PTO SHAFT-	64
PTO SHAFT-540/750 R.P.M.	65
PTO-CONTROL	66

TABLE OF CONTENT

PTO-CONTROL-540/750 R.P.M.	67
TRANSFER GEAR BOX AND DRIVE SHAFT:	68
TRANSFER GEAR BOX AND DRIVE SHAFT:	69
REAR AXLE	70
REAR AXLE-TRACTOR SP	71
REAR AXLE-TRACTOR FP	72
REAR AXLE-TRACTOR GE	73
DIFFERENTIAL LOCK CONTROLS	74
BRAKES	75
BRAKES-PIPINGS	76
BRAKES-DEVICE CONTROL	77
BRAKES	78
MASTER CYLINDER-BRAKE PUMP	79
BRAKE CYLINDER	80
KIT TRAILER BRAKES-NOT INCLUDED GE TRACTOR	81
REAR WHEELS-TRACTOR SP	82
REAR WHEELS-TRACTOR FP	83
REAR WHEELS-TRACTOR GE	84
FRONT WHEELS-TRACTOR SP - FP	85
FRONT WHEELS-TRACTOR GE	86
FRONT AXLE 2 WHEEL DRIVE-TRACTOR FP	87
FRONT AXLE 2 WHEEL DRIVE-TRACTOR SP - GE	88
FRONT AXLE 4 WHEEL DRIVE	89
FRONT AXLE 4 WHEEL DRIVE	90
FRONT AXLE 4 WHEEL DRIVE-TRACTOR 354 SP	91
FRONT AXLE 4 WHEEL DRIVE-TRACTOR 354 FP	92
FRONT AXLE 4 WHEEL DRIVE-TRACTOR 354 GE	93
FRONT AXLE 4 WHEEL DRIVE-TRACTOR 354 SP	94
FRONT AXLE 4 WHEEL DRIVE-TRACTOR 354 FP	95
FRONT AXLE 4 WHEEL DRIVE-TRACTOR 354 GE	96
FRONT AXLE 4 WHEEL DRIVE-TYPE STANDARD	97
FRONT AXLE 4 WHEEL DRIVE-TYPE HYDROLOCK	98
FRONT AXLE 4 WHEEL DRIVE-PINION SET AND SIDE SHAFT	99
FRONT AXLE 4 WHEEL DRIVE-PINION SET AND SIDE SHAFT	100
FRONT AXLE 4 WHEEL DRIVE-HOUSINGS AND STEERING CYLINDER	101
FRONT AXLE 4 WHEEL DRIVE-FINAL REDUCER AND WHELL HUB	102
FRONT AXLE 4 WHEEL DRIVE-WITH DIFFERENTIAL STANDARD	103
FRONT AXLE 4 WHEEL DRIVE-WITH DIFFERENTIAL HYDROLOCK	104
STEERING HYDRAULIC LINES-TRACTOR 354 SP-354 FP	105
STEERING HYDRAULIC LINES-TRACTOR 354 SP - 354 FP - 354 GE	106
STEERING HYDRAULIC LINES-TRACTOR SP - FP - GE	107
STEERING ORBITROL UNIT-2 WHEEL DRIVE	108
STEERING ORBITROL UNIT-4 WHEELS DRIVE	109
STEERING-PUMP-TUROLLA	110
STEERING-PUMP-BOSCH	111
STEERING CYLINDER-TRACTOR SP - GE	112
STEERING CYLINDER-TRACTOR FP	113
STEERING CYLINDER	114
HYDRAULIC EQUIPMENT	115
HYDRAULIC EQUIPMENT	116
HYDRAULIC EQUIPMENT	117
HYDRAULIC PUMP-TUROLLA	118
HYDRAULIC PUMP-BOSCH	119
HYDRAULIC PUMP-BOSCH	120
HYDRAULIC PUMP-TUROLLA	121
HYDRAULIC PUMP-TUROLLA	122
HYDRAULIC PUMP-BOSCH	123
HYDRAULIC LIFT VALVE-WITH MECANICS RISER	124
HYDRAULIC LIFT	125
HYDRAULIC LIFT-TRACTOR SP - GE	126
HYDRAULIC LIFT-TRACTOR FP	127
HYDRAULIC LIFT-TRACTOR SP	128
HYDRAULIC LIFT-TRACTOR FP	129
ELECTRICAL WIRING-FOR ELECTRONIC LIFT	130
HYDRAULIC LIFT VALVE-FOR ELECTRONIC LIFT	131
ELECTRICAL WIRING-CONTROL PANEL ELECTRONIC LIFT	132
ELECTRICAL WIRING-CONTROL PANEL ELECTRONIC LIFT	133
MECHANICAL CONTROL LIFT-TRACTOR SP	134

TABLE OF CONTENT

MECHANICAL CONTROL LIFT-TRACTOR GE	135
MECHANICAL CONTROL LIFT-TRACTOR FP	136
MECHANICAL CONTROL LIFT-TRACTOR FP	137
MECHANICAL CONTROL LIFT-TRACTOR SP	138
MECHANICAL CONTROL LIFT-TRACTOR 354 SP/FP	139
MECHANICAL CONTROL LIFT-TRACTOR GE	140
HYDRAULIC LIFT CYLINDER-HYDRAULIC LIFT CYLINDER,WITH 1'AND 2'AUXIL.HYD	141
HYDRAULIC LIFT CYLINDER-HYDRAULIC LIFT CYLINDER,WITH 3AND 4 AUXIL.HYDR	142
AUXILIARY HYDRAULIC VALVE LINES-WITH 1.O DISTRIBUTOR	143
AUXILIARY HYDRAULIC VALVE LINES-WITH 2.O DISTRIBUTORES	144
AUXILIARY HYDRAULIC VALVE LINES-WITH 3.O DISTRIBUTORES	145
AUXILIARY HYDRAULIC VALVE LINES-TRACTOR FP WITH N.4 HYDRA. VALVE	146
CONTROLS ,AUXILIARY HYDRAULICS-WITH 1.O DISTRIBUTOR	147
CONTROLS ,AUXILIARY HYDRAULICS-WITH 2.O DISTRIBUTORES	148
CONTROLS ,AUXILIARY HYDRAULICS-WITH 3.O DISTRIBUTORES	149
CONTROLS ,AUXILIARY HYDRAULICS-TRACTOR FP	150
PLATE FOR AUXILIARY HYDRAULIC VALVE-HIDROIRMA TYPE.	151
AUXILIARY HYDRAULICS VALVE STANDARD-HYDROIRMA TYPE STANDARD	152
AUXILIARY HYDRAULICS VALVE STANDARD-HYDROIRMA TYPE STANDARD	153
AUXILIARY HYDRAULICS FLOATING-HYDROIRMA TYPE FLOATING	154
AUXILIARY HYDRAULICS FLOATING-HYDROIRMA TYPE FLOATING	155
AUXILIARY HYDRAULICS VAVE KICK-OUT-HYDROIRMA TYPE KICK-OUT	156
AUXILIARY HYDRAULICS VAVE KICK-OUT-HYDROIRMA TYPE KICK-OUT	157
AUXILIARY HYDRAULIC VALVE LINES-WITH 1.O DISTRIBUTOR	158
AUXILIARY HYDRAULIC VALVE LINES-WITH 2.O DISTRIBUTORES	159
AUXILIARY HYDRAULIC VALVE LINES-TRACTOR FP WITH N.3 HYDRA. VALVE	160
CONTROLS ,AUXILIARY HYDRAULICS-WITH 1.O DISTRIBUTOR	161
CONTROLS ,AUXILIARY HYDRAULICS-WITH 2.O DISTRIBUTORES	162
CONTROLS ,AUXILIARY HYDRAULICS-TRACTOR WITH N.3 HYDRA. VALVE	163
AUXILIARY HYDRAULICS VALVE-TILL TYPE STANDARD	164
AUXILIARY HYDRAULICS VALVE-TILL TYPE FLOATING	165
AUXILIARY HYDRAULIC VALVE LINES-WITH AUXILIARY HYDRAULIC VALVE CLEARANCE	166
AUXILIARY HYDRAULICS VALVE STANDARD-SALAMI TYPE STANDARD	167
AUXILIARY HYDRAULICS FLOATING-SALAMI TYPE FLOATING	168
AUXILIARY HYDRAULICS VAVE KICK-OUT-SALAMI TYPE KICK-OUT	169
AUXILIARY VALVE FOR HYDRAULIC ENGINE-SALAMI TYPE FOR HYDRAULIC ENGINE	170
ACCESSORIES HYDRAULIC-ADDITIONAL POWER OUTLET UNIT	171
LINKAGE-STANDARD VERSION	172
LINKAGE-STANDARD VERSION	173
LINKAGE-TRACTOR SP	174
LINKAGE-NOT INCLUDED GE TRACTOR	175
LINKAGE-TRACTOR GE	176
LINKAGE-NOT INCLUDED GE TRACTOR	177
LINKAGE-TRACTOR GE	178
LINKAGE	179
LINKAGE-MECANICS LIFT CYLINDER RIGTH	180
LINKAGE-TRACTOR FP	181
LINKAGE-TRACTOR FP	182
SHEET METAL-TRACTOR 354 SP - 354 FP - 354 GE	183
SHEET METAL-TRACTOR 354 SP - 354 FP - 354 GE	184
SHEET METAL	185
SHEET METAL	186
COOLING SYSTEM-SHIELD FAN	187
TOOL BOX	188
DECALS	189
DECALS	190
DECALS	191
FENDERS - FRONT-4 WHEELS DRIVE	192
FENDERS AND PLATFORM-TRACTOR SP	193
FENDERS AND PLATFORM-TRACTOR FP	194
FENDERS AND PLATFORM-TRACTOR GE	195
SEAT	196
SEAT-CHASSIS AND SUSPENSION	197
SAFETY FRAME-TRACTOR SP - FP - GE	198
ROTATING LIGHT	199
WEIGHT FRAME AND WEIGHTS W	200
HITCH CONNECTIONS-WITHOUT HITCH	201
REAR HOOK	202

<https://www.ebooklibonline.com>

Hello dear friend!

Thank you very much for reading.

Enter the link into your browser.

The full manual is available for immediate download.

<https://www.ebooklibonline.com>

MASSEY FERGUSON

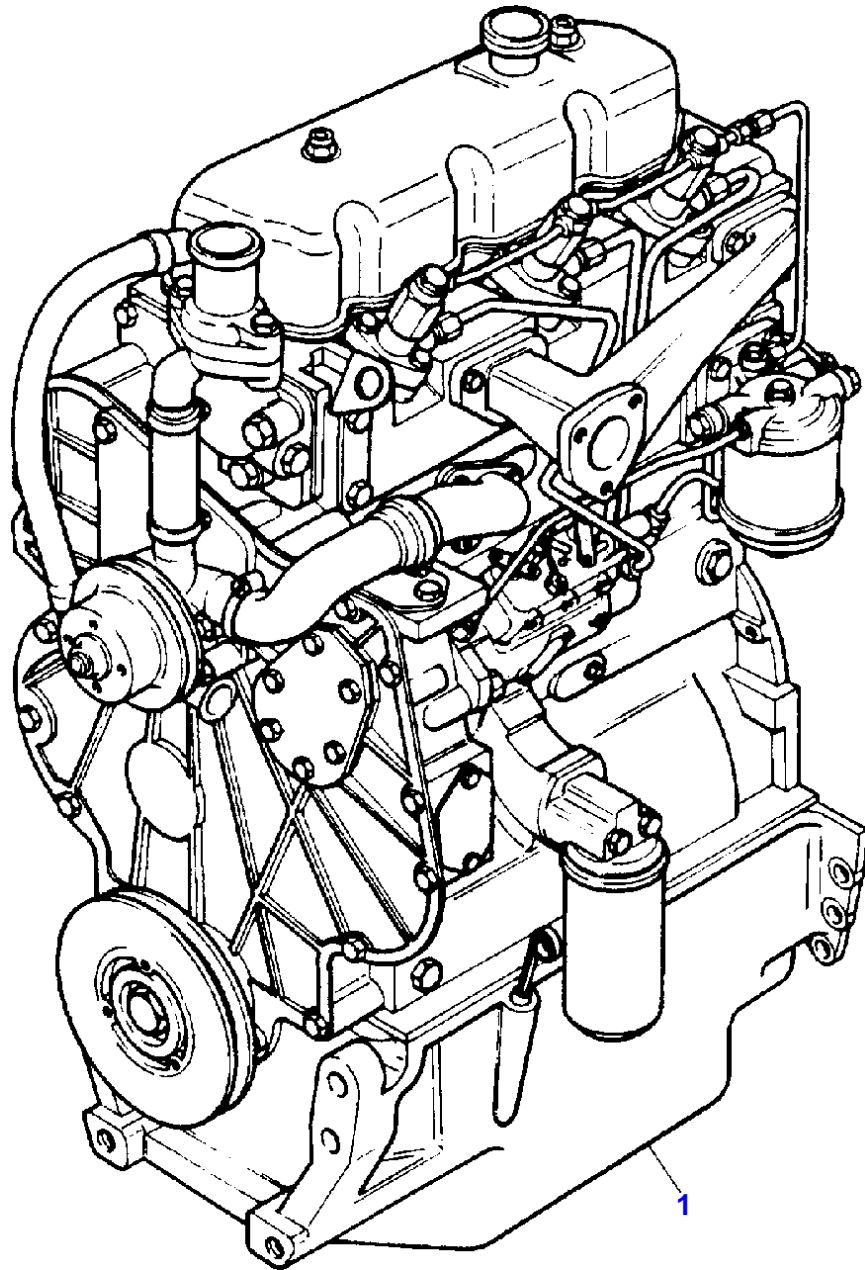
MF 354/3210 SP(X)-FP(X)-GE(X) FOOTSTEP TRACTOR - 3653990

3653990

TABLE OF CONTENT

00

DRAWBAR-HEAVY DUTY	203
REAR HOOK-STANDARD TYPE	204
REAR HOOK-TRACTOR FP	205
TOOL KIT	206
SEALERS AND LIQUID GASKETS ADHESIES	207



MASSEY FERGUSON

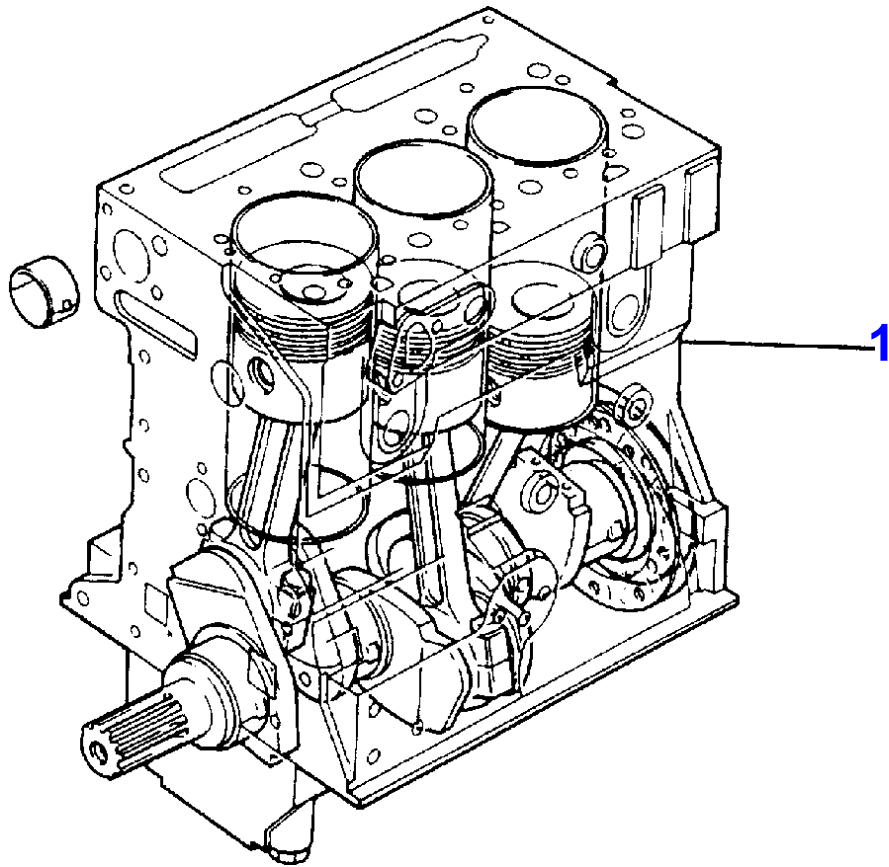
MF 354/3210 SP(X)-FP(X)-GE(X) FOOTSTEP TRACTOR - 3653990

3653990

ENGINE ASSEMBLY-AD3.152 ENGINE

1

Item	Part Number	Qty	Description	Comments
1	3553118M91	1	Engine	[C] [A] "CE31197"
1	3553128M91	1	Engine	[B] "CE31212"
				[C] WITH BLU ENGINE STD
				[A] STD.HYDRAULIC LINES
				[B] SINGLE HYDRAULIC LINES



MASSEY FERGUSON

MF 354/3210 SP(X)-FP(X)-GE(X) FOOTSTEP TRACTOR - 3653990

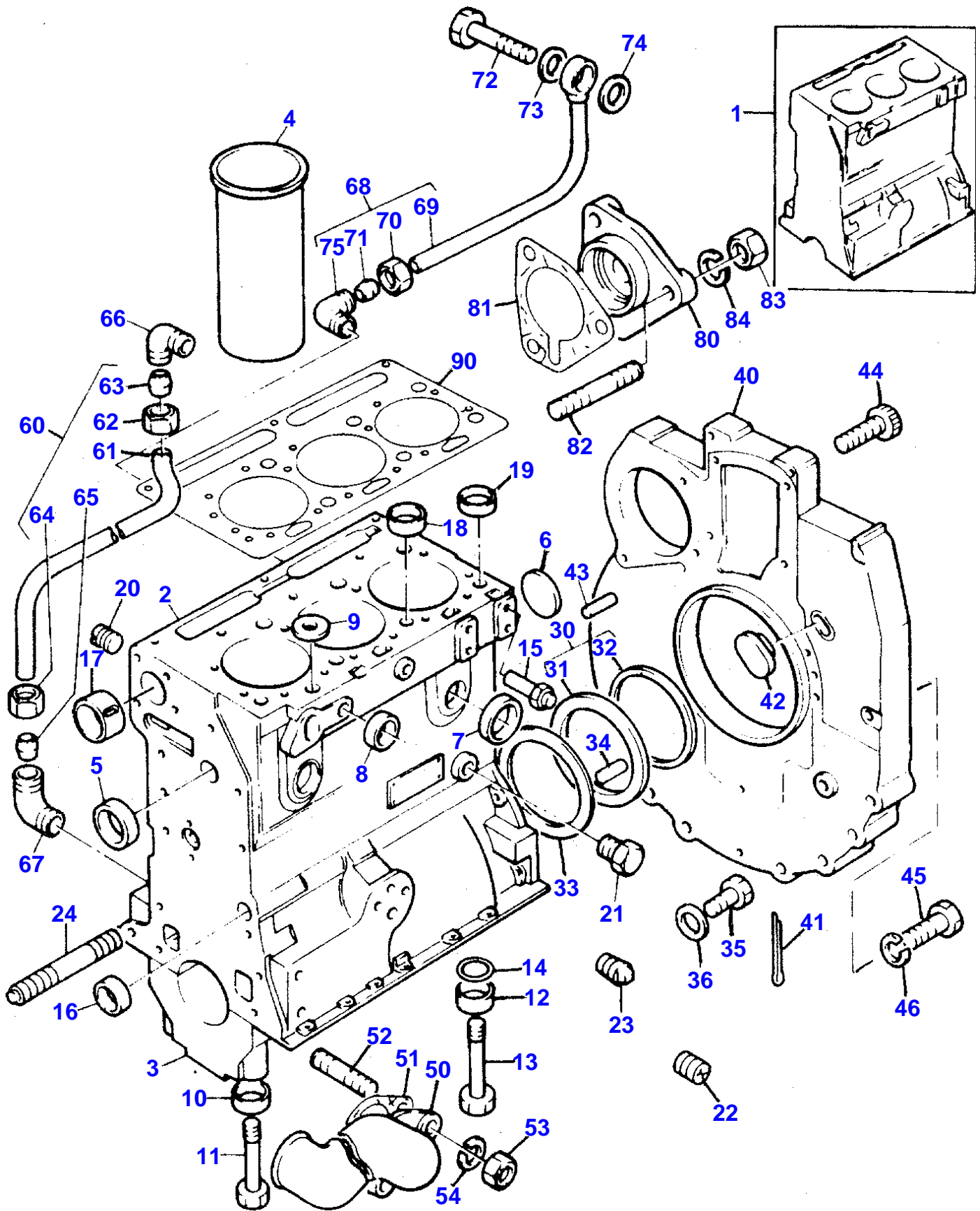
3653990

SHORT ENGINE-TABLE PK ACEC9106

2

Item	Part Number	Qty	Description	Comments
1	CE39124	1	ENGINE	[C] [A] "39116"
2		1	CYLINDER BLOCK	[B] (1)
		3	LINER	(1)
		1	CRANKSHAFT	(1)
		2	WEIGHT	(1)
		1	BEARING	(1)
		3	PISTON	(1)
		3	SEGMENT	(1)
		3	CONROD	(1)
		1	BEARING	(1)
		4	WASHER	(1)
		1	SEAL	(1)
		1	HOUSING	(1)

[C]
WITH BLU ENGINE STD
[B]
COMPLETE WITH PLUGS
[A]
LIP SEAL



CYLINDER BLOCK-AD3.152 ENGINE

Item	Part Number	Qty	Description	Comments
1	ZZ 50206	1	BLOCK	[C]
	ZZ 50133	1	BLOCK	Up to Serial or Engine Number
2		1	CYLINDER BLOCK	(1)
3		4	SUPPORT	Not serviced, order REF.1 (1) Not serviced, order REF.1
4	31358323	3	Liner	[A, X] (1) . 3. 3. 6
4	31358345	X	Liner	[B]
	31358357	X	Liner	[B] Thickness (+) 0.76MM Thickness (+) 0.030
5	0650710	1	Plug	(1)
6	0650692	1	Plug	(1)
7	0650710	4	Plug	(1)
8	32417163	2	Plug	(1)
9	33141124	1	Plug	(1)
10	33137408	6	Thimble	(1)
11	32181441	6	Screw	(1)
12	33137408	2	Thimble	(1)
13	32181442	2	Screw	(1)
14	2415608	2	O Ring	(1)
15	2485A204	1	Plug	(1)
16	0650566	2	Plug	(1)
17	31134128	1	Bush	(1)
18	33157142	2	Plug	(1)
19	33157143	2	Plug	(1)
20	32114143	1	Plug	(1)
21	32161114	1	Plug	(1)
22	32114472	3	Plug	(1)
23	0650593	1	Plug	(1) Up to Serial or Engine Number U726816K From Serial or Engine Number U726817K
23	0650594	1	Plug	
24	32537404	1	Stud	
30	4142V002	1	Housing	[X] . 1. 2. 8
31		1	HOUSING	(30) Not serviced, order REF.30
32	2418F475	1	Seal	(30)
33	33826115	1	GASKET	[X] . 1. 2. 8
34	0350015	2	Dowel	[X] . 1. 2. 8
35	2183205	9	Screw	
36	390972X1	9	Washer Metric	
40	37147975	1	Plate	
41	0610045	1	Pin	
42	37813113	1	Plug	
43	0350016	2	Dowel	
44	0720798	2	Screw	
45	0746454	6	BOLT	
46	0920054	6	Washer	
50	37736243	1	UNION	[E]
51	3686J003	1	GASKET	[F]
	3686J003	1	GASKET	[G]
52	2183205	2	Screw	
53	353916X1	2	Nut Unf	
54	0920053	2	Washer	
60	35352404	1	Pipe,Oil	
61		1	PIPE	(60) Not serviced, order REF.60
62	0576111	1	Nut	(60)
63	0566002	1	Olive	(60)
64	0576111	1	Nut	(60)
65	0566002	1	Olive	(60)
66	0201047	1	Connection	
67	0201047	1	Connection	
68	35568109	1	Pipe,Oil	

MASSEY FERGUSON

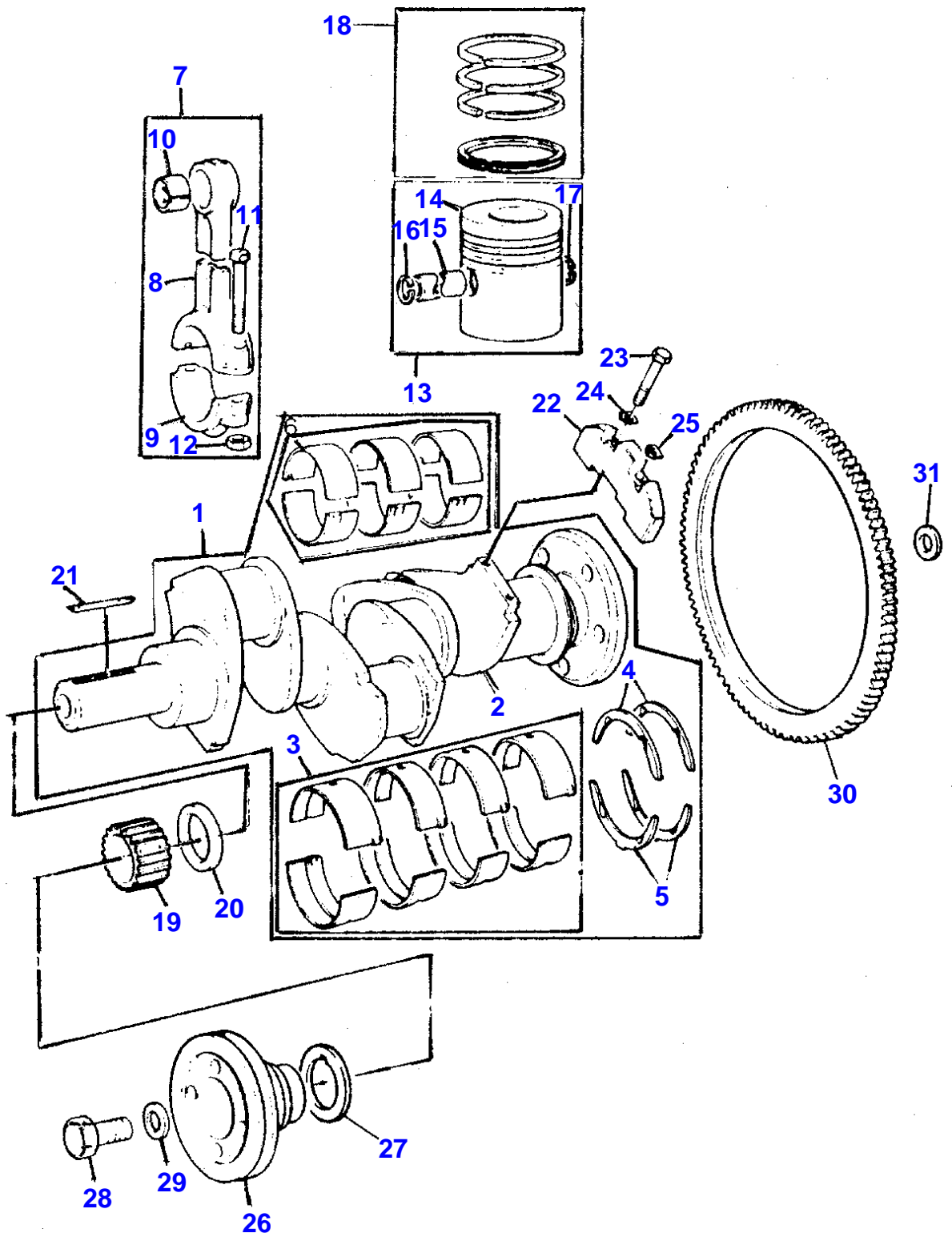
MF 354/3210 SP(X)-FP(X)-GE(X) FOOTSTEP TRACTOR - 3653990

3653990

CYLINDER BLOCK-AD3.152 ENGINE

3

Item	Part Number	Qty	Description	Comments
69		1	PIPE	(68) Not serviced, order REF.68
70	0576111	1	Nut	(68)
71	0566002	1	Olive	(68)
72	0095350	1	Bolt	
73	2411118	1	Washer	
74	2411118	1	Washer	
75	0201047	1	Connection	
80	37556191	1	Plate	
81	36862605	1	GASKET	
82	2183205	3	Screw	(80)
83	390972X1	3	Washer Metric	
90	3681E024	1	GASKET	[X] 00.001.004.016
				[A] PRESS FIT
				[B] SLIP FIT
				[E] WAS 37736242 USE 37736243 WITH 3686J002
				[F] USED ONLY WITH 37736242
				[G] USED ONLY WITH 37736243
				[X] QTY PER TRACTORS SOLD (AA.BBB.CCC.DDD) (AA) FOR 1 ,(BBB) 2-10 (CCC) 11-25 (DDD) 26-50
				[C] WITH BLU ENGINE STD



Item	Part Number	Qty	Description	Comments
1	ZZ90150P	1	SHAFT	[E]
2		1	SHAFT	(1) Not serviced, order REF.1
3	68084	X	Kit, Bearing	[A] (1)
	68084A	1	Kit, Bearing	[A, X] Thickness (-)0.25MM Thickness (-)0.010 . 1. 2. 3
3	68084B	X	Kit, Bearing	[A] Thickness (-)0.50MM Thickness (-)0.020
3	68084C	X	Kit, Bearing	[A] Thickness (-)0.75MM Thickness (-)0.030
4	31137211	2	Thrust Washer	(1)
	31137212	1	Washer	[X] Thickness (+)0.19MM Thickness (+)0.0075 . 1. 2. 3
5	31137221	2	Thrust Washer	(1)
	31137222	1	Washer	[X] Thickness (+)0.19MM Thickness (+)0.0075 . 1. 2. 3
6	85036	1	Kit, Bearing	[A] (1)
	85036A	1	Kit, Bearing	[A, X] Thickness (-)0.25MM Thickness (-)0.010 . 1. 2. 3
6	85036B	X	Kit, Bearing	[A] Thickness (-)0.50MM Thickness (-)0.020
6	85036C	X	Kit, Bearing	[A] Thickness (-)0.75MM Thickness (-)0.030
7	ZZ90010	1	Kit, Conrod	[X] . 3. 6. 18
8		1	CONROD	(7) Not serviced, order REF.7
9		1	SUPPORT	(7) Not serviced, order REF.7
10	31134151	1	Bush	(7)
11	0095250	2	Bolt	(7)
12	33221327	2	Nut	(7)
13	68302	3	Kit, Piston	[B]
	89214	3	Kit, Piston	[C, X] 00.003.006.018
14		1	PISTON	(13) Not serviced, order REF.13
15		1	PIN	(13) Not serviced, order REF.13
16	0170001	1	Circlip	(13)
17	0170001	1	Circlip	(13)
18	41158065	3	Kit, Piston Ring	[X] . 3. 6. 18
19	31163495	1	GEAR	[X] Number of teeth/spines 25 . 1. 2. 3
20	33125151	1	SPACER	
21	36271704	1	Woodruff Key	
22	31328242	2	Weight	[D]
23	2185189	4	Screw	
24	31731515	2	Washer	
25	31731516	2	Washer	
26	31147788	1	PULLEY	
27	33176137	1	Washer	
28	32162331	1	Screw	
29	33125112	1	Washer	
30	3552228M1	1	CROWNWHEEL	Number of teeth/spines 115

MASSEY FERGUSON

MF 354/3210 SP(X)-FP(X)-GE(X) FOOTSTEP TRACTOR - 3653990

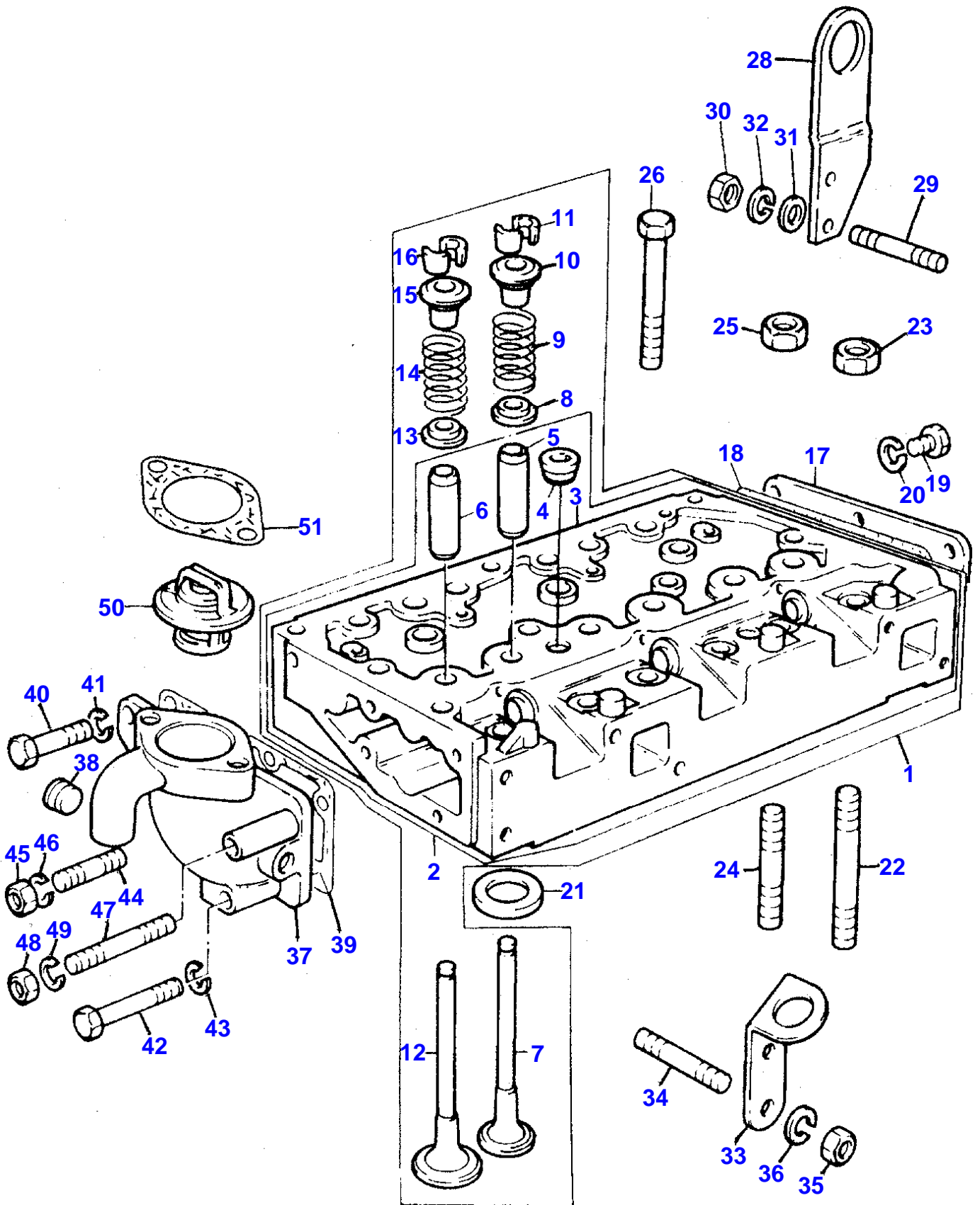
3653990

CRANKSHAFT, PISTONS AND CONNECTING RODS-AD3.152 ENGINE

4

Item	Part Number	Qty	Description	Comments
31	33117127	6	Washer	
32	31137235	1	WASHER	(1)
32	31137236	X	WASHER	Thickness (+)0.007
33	31137245	1	WASHER	(1)
33	31137246	X	WASHER	Thickness (+)0.007

[A]
PRE-FINISHED
[C]
PRE-TOPPED
[B]
UNTOPPED
[X]
QTY PER TRACTORS SOLD (AA.BBB.CCC.DDD) (AA) FOR 1 ,(BBB) 2-10 (CCC)
11-25 (DDD) 26-50
[E]
WITH BLU ENGINE STD
[D]
REPLACES 31328241 IN ENGINE SETS ONLY(QTY 2).



CYLINDER HEAD-AD3.152 ENGINE

Item	Part Number	Qty	Description	Comments
1	ZZ80235P	1	HEAD	[C]
2	ZZ 80017	1	CYLINDER HEAD	(1)
3		1	CYLINDER HEAD	(2)
4	2431154	2	Plug	Not serviced, order REF.2 (2)
5	3316A031	3	GUIDE	(2)
6	3316A031	3	GUIDE	[X] (2) . 3. 6. 18
7	3142A081	3	Valve Exhaust	[X] (1) . 3. 6. 18 . 3. 6. 18
8	33415133	3	Washer	[X] (1) . 3. 6. 18
9	0780012	3	Spring	[X] (1) . 3. 6. 18
10	33423148	3	Cap	[X] (1) . 3. 6. 18
11	0230001	6	Cotter	[A, X] (1) . 3. 6. 18
12	31431681	3	Valve Inlet	[X] (1) . 3. 6. 18
13	33415133	3	Washer	(1)
14	0780012	3	Spring	(1)
15	33423148	3	Cap	(1)
16	0230001	6	Cotter	[A] (1)
17	3612M002	1	Plate	
18	36851416	1	GASKET	
19	353517X1	6	Screw Unf	
20	0920053	6	Washer	
21	33124428	3	Insert	
22	32524132	1	Stud	
23	33221329	1	Nut	
24	32524148	3	Stud	
25	33221329	3	Nut	
26	32181457	5	Screw	
27	32181458	9	Screw	
28		1	STIRRUP	[B]
29	2216194	2	SCREW	
30	2188135	2	Nut	
31	0920004	2	Washer	
32	0920054	2	Washer	
33	36456321	1	Plate	
34	0826462	2	Stud	
35	2188135	2	Nut	
36	0920054	2	Washer	
37	37766363	1	Body	
38	2431A054	1	Plug	
39	3685A005	1	GASKET	
40	2183205	2	Screw	
41	0920053	2	Washer	
42	0096437	1	Bolt	
43	0920054	1	Washer	
44	2217072	1	Stud	
45	0576002	1	Nut	
46	0920053	1	Washer	
47	0096441	1	Bolt	
48	2188135	1	Nut	
49	0920054	1	Washer	
50	2485666	1	Thermostat	[X] . 2. 4. 16
51	36834154	1	GASKET	[X] . 2. 4. 16

[A]
SERVICED IN PAIRS
[X]

MASSEY FERGUSON

MF 354/3210 SP(X)-FP(X)-GE(X) FOOTSTEP TRACTOR - 3653990

3653990

CYLINDER HEAD-AD3.152 ENGINE

5

Item Part Number Qty Description

Comments

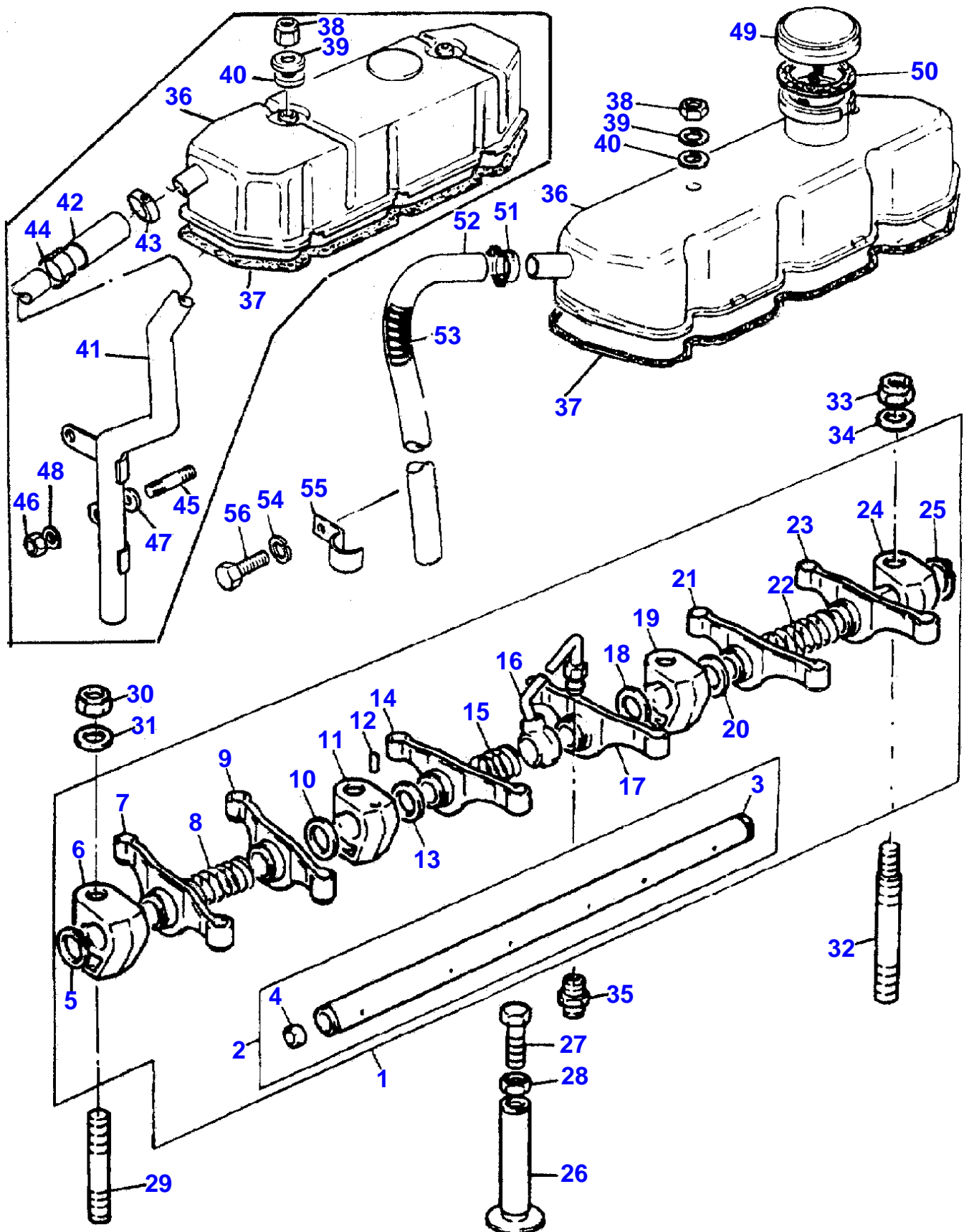
QTY PER TRACTORS SOLD (AA.BBB.CCC.DDD) (AA) FOR 1 ,(BBB) 2-10 (CCC)
11-25 (DDD) 26-50

[C]

WITH BLU ENGINE STD

[B]

NOT SERVICED



ROCKER SHAFT-AD3.152 ENGINE

Item	Part Number	Qty	Description	Comments
1	4115R807	1	SHAFT	[A] [X] . 0. 1. 2
2	ZZ90047	1	Rocker Shaft	[X] (1) . 1. 2. 4
3		1	SHAFT	(2) Not serviced, order REF.2
4	0650507	2	Plug	[X] (2) . 2. 4. 8
5	0170033	1	Circlip	(1)
6	0101138	1	Bracket	(1)
7	3737A091	1	Lever	(1) Right Hand
8	0780005	1	Spring	(1)
9	3737A091	1	Lever	(1) Right Hand
10	0330505	1	Spacer	(1)
11	37521212	1	Bracket	(1)
12	2112A066	1	Pin	(1)
13	0330505	1	Spacer	(1)
14	3737A101	1	Lever	(1) Left Hand
15	0780175	1	Spring	(1)
16	35568352	1	Pipe,Oil	(1)
17	3737A091	1	Lever	(1) Right Hand
18	0330505	1	Spacer	(1)
19	0101138	1	Bracket	(1)
20	0330505	1	Spacer	(1)
21	3737A101	1	Lever	(1) Left Hand
22	0780005	1	Spring	(1)
23	3737A101	1	Lever	(1) Left Hand
24	0101138	1	Bracket	(1)
25	0170033	1	Circlip	(1)
26	0860012	6	Tappet	[X] . 2. 4. 8
27	32151116	6	Screw	
28	0576052	6	Nut	
29	2214209	2	Stud	
30	2211283	2	Nut	
31	0920004	2	Washer	
32	32754435	2	Stud	
33	2211283	2	Nut	
34	0920004	2	Washer	
35	0206002	1	Union	
36	37188557	1	COVER	Up to Serial or Engine Number 31/01/94
	37188197	1	COVER	From Serial or Engine Number 01/02/94
37	36811115	1	Joint	[X] . 2. 4. 10
38	0576102	2	Nut	
39	3314P004	2	Washer	
40	3381A003	2	Washer	
41	35732479	1	Pipe	Up to Serial or Engine Number 31/01/94
42	0202058	1	Hose	Up to Serial or Engine Number 31/01/94
43	21825195	1	Clip	Up to Serial or Engine Number 31/01/94
44	21825195	1	Clip	Up to Serial or Engine Number 31/01/94
45	2217572	1	STUD	Up to Serial or Engine Number 31/01/94
46	353916X1	1	Nut Unf	Up to Serial or Engine Number 31/01/94
47	0920460	1	SPACER	Up to Serial or Engine Number 31/01/94
48	0920053	1	Washer	Up to Serial or Engine Number 31/01/94
49	2487854	1	Cap	(36) From Serial or Engine Number 01/02/94
50	24870001	1	Joint	(49) From Serial or Engine Number 01/02/94
51	21825195	1	Clip	From Serial or Engine Number 01/02/94
52	33872516	1	Pipe,Breather	From Serial or Engine Number 01/02/94
53	31754118	1	Spring	From Serial or Engine Number 01/02/94
54	0920053	1	Washer	From Serial or Engine Number 01/02/94

MASSEY FERGUSON

MF 354/3210 SP(X)-FP(X)-GE(X) FOOTSTEP TRACTOR - 3653990

3653990

ROCKER SHAFT-AD3.152 ENGINE

6

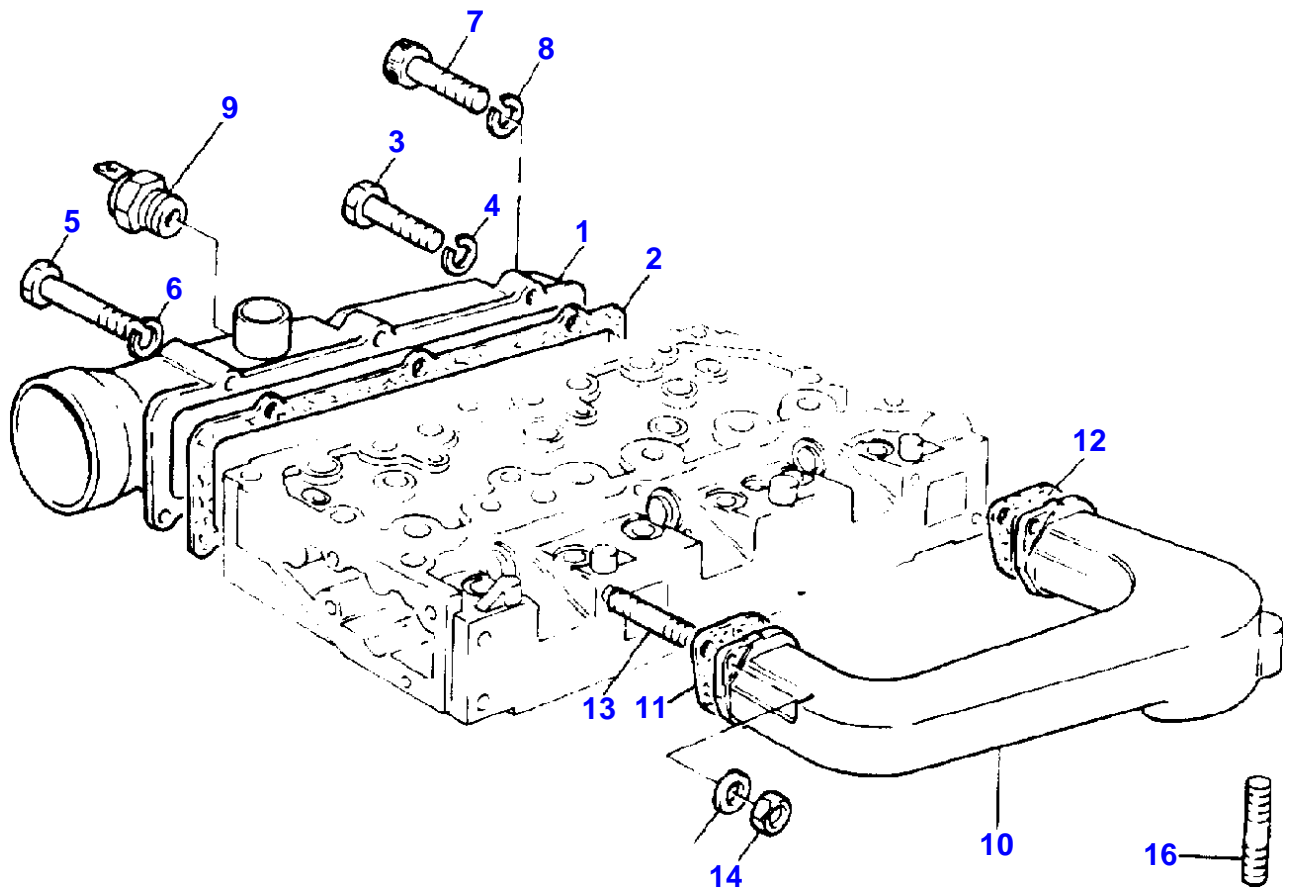
Item	Part Number	Qty	Description	Comments
55	36561129	2	Clip	From Serial or Engine Number 01/02/94
56	2233204	1	Screw	From Serial or Engine Number 01/02/94

[X]

QTY PER TRACTORS SOLD (AA.BBB.CCC.DDD) (AA) FOR 1 ,(BBB) 2-10 (CCC) 11-25 (DDD) 26-50

[A]

WITH BLU ENGINE STD



MASSEY FERGUSON

MF 354/3210 SP(X)-FP(X)-GE(X) FOOTSTEP TRACTOR - 3653990

3653990

AIR INDUCTION AND EXHAUST SYSTEM

7

Item	Part Number	Qty	Description	Comments
1	37786294	1	COLLET	[A]
2	36867201	1	GASKET	[X]
				. 1. 2. 8
3	0746019	4	Screw	
4	0920052	4	Washer	
5	0096044	2	Screw	
6	0920052	2	Washer	
7	2172518	1	Screw	
8	0920052	1	Washer	
9	2666108	1	Intake Heater	[X]
				. 1. 2. 8
10	37781341	1	Exhaust Manifold	[X]
				. 1. 2. 8
11	36862198	1	GASKET	
12	36862198	1	GASKET	
13	0826243	4	Stud	
14	2188134	4	Nut	
15	390972X1	4	Washer Metric	
16	0826404	3	Stud	

[X]
 QTY PER TRACTORS SOLD (AA.BBB.CCC.DDD) (AA) FOR 1 ,(BBB) 2-10 (CCC)
 11-25 (DDD) 26-50
 [A]
 WITH BLU ENGINE STD



Suggest:

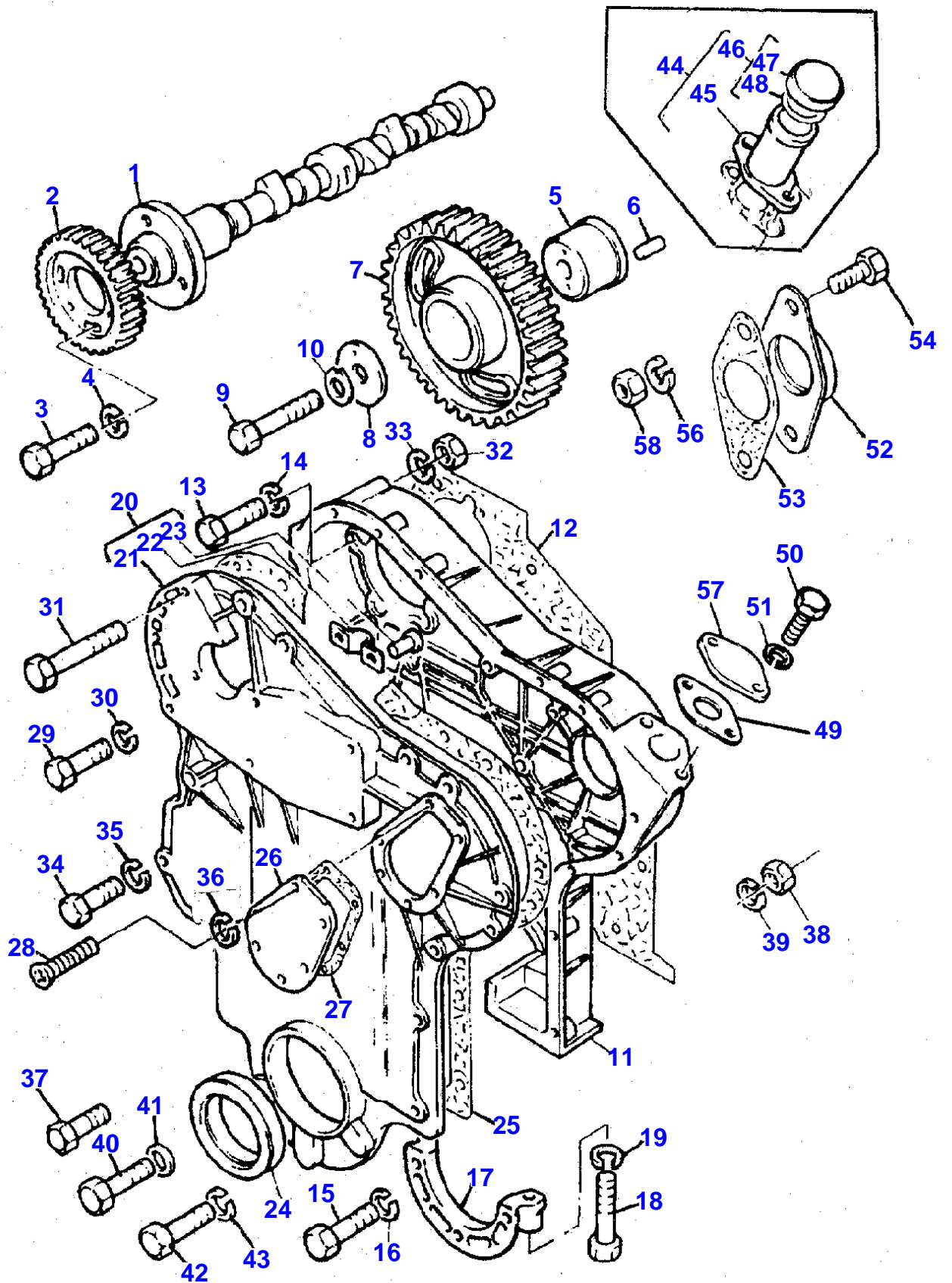
If the above button click is invalid.

Please download this document

first, and then click the above link

to download the complete manual.

Thank you so much for reading



<https://www.ebooklibonline.com>

Hello dear friend!

Thank you very much for reading.

Enter the link into your browser.

The full manual is available for immediate download.

<https://www.ebooklibonline.com>