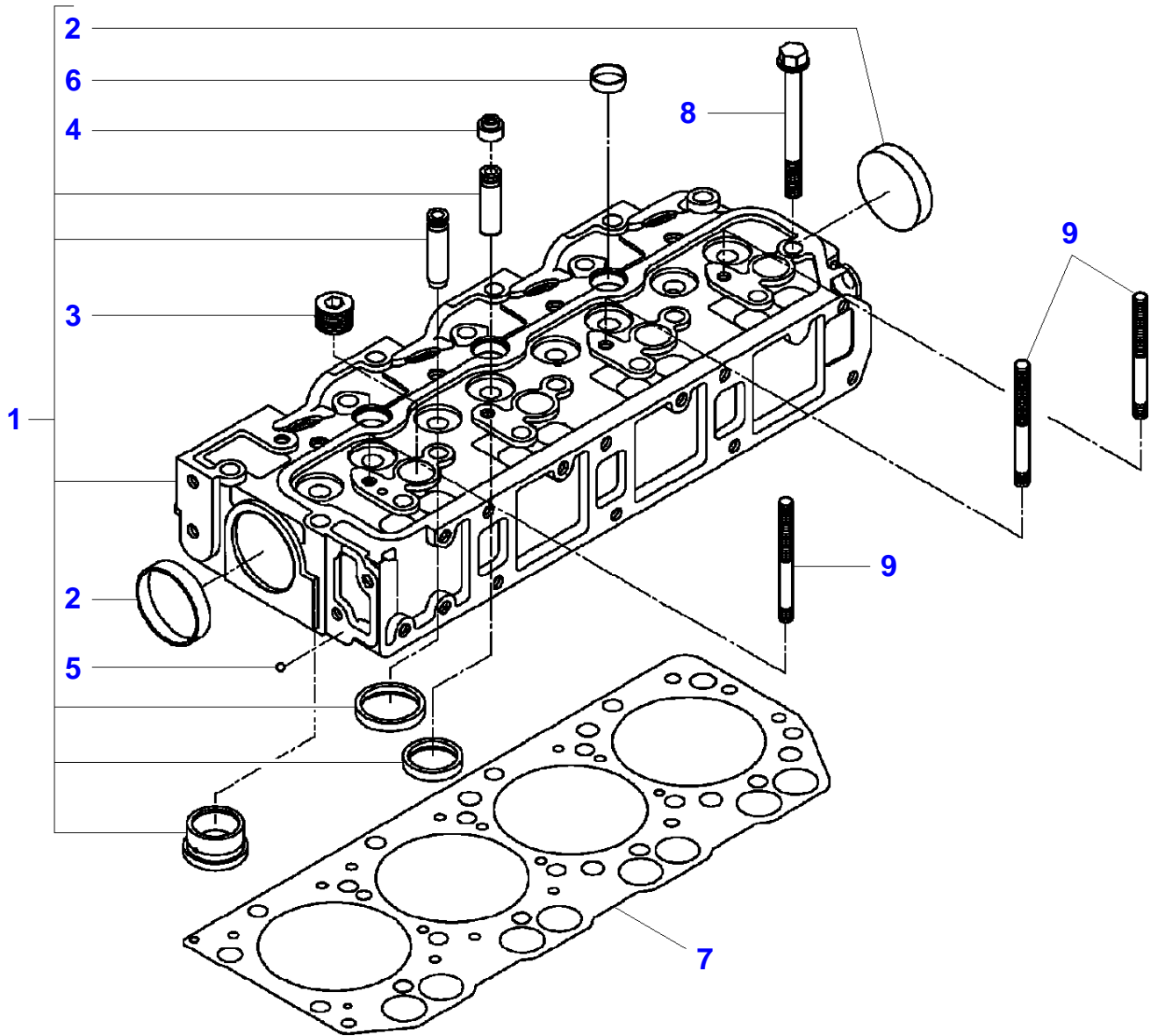


<b>Page Number</b>	<b>Page Title</b>	<b>Page Reference</b>
01-000-TOC	ENGINE, FUEL AND EXHAUST SYSTEM	01-000-TOC
02-000-TOC	FRAME AND SUSPENSION	02-000-TOC
03-000-TOC	DRIVE TRAIN SYSTEM	03-000-TOC
04-000-TOC	HYDRAULIC SYSTEM	04-000-TOC
05-000-TOC	ELECTRICAL SYSTEM	05-000-TOC
06-000-TOC	CAB	06-000-TOC
07-000-TOC	PLATFORM	07-000-TOC
08-000-TOC	CHASSIS	08-000-TOC
09-000-TOC	WHEELS	09-000-TOC
10-000-TOC	ACCESSORIES	10-000-TOC
11-000-TOC	GENERAL INFORMATION	11-000-TOC

Page Number	Page Title	Page Reference
01-0001	ENGINE - CYLINDER HEAD	IS01I001-1
01-0002	ENGINE - CYLINDER HEAD COVER	IS02I001-1
01-0003	ENGINE - INTAKE MANIFOLD	IS03I001-1
01-0004	ENGINE - EXHAUST MANIFOLD	IS04I001-1
01-0005	ENGINE - CYLINDER-BLOCK	IS05I001-1
01-0006	ENGINE - CONNECTING ROD BEARINGS - REPAIR KIT	IS06I001-1
01-0007	ENGINE - OIL SUMP	IS07I001-1
01-0008	ENGINE - REAR PLATE	IK79I001-1
01-0009	ENGINE - TIMING GEAR HOUSING - TYPE ENG .E4CGVB19 - E4CGVB24	IS09I001-1
01-0010	ENGINE - TIMING GEAR HOUSING - TYPE ENG. E4CGVB21 - E4CGVB23	IS09I009-1
01-0011	ENGINE - HANGER	IS10I001-1
01-0012	ENGINE - ROCKER ARM	IS11I001-1
01-0013	ENGINE - CAMSHAFT	IS12I001-1
01-0014	ENGINE - PISTON	IS13I001-1
01-0015	ENGINE - CRANKSHAFT	IS15I001-1
01-0016	ENGINE - OIL PUMP	IS16I001-1
01-0017	ENGINE - WATER PUMP	IS17I001-1
01-0018	ENGINE - FAN	IS19I001-1
01-0019	ENGINE - INJECTION SYSTEM	IS20I001-1
01-0020	ENGINE - INJECTION SYSTEM - INJECTION NOZZLE	IS20I002-1
01-0021	ENGINE - INJECTION PUMP	IS21I001-1
01-0022	ENGINE - INJECTION PUMP	IS21I002-1
01-0023	ENGINE - FUEL PIPE	IS22I001-1
01-0024	ENGINE - REPAIR KIT	IK03I001-1
01-0025	ALTERNATOR & STARTER	IS23I001-1
01-0026	ALTERNATOR - TYPE E4CGVB19 - E4CGVB21 - E4CGVB24 UPTO 6839	IS29I001-1
01-0027	ALTERNATOR - TYPE E4CGVB23 - E4CGVB24 FROM 6840	IS29I004-1
01-0028	STARTER	IS30I001-1
01-0029	ENGINE ELECTRICS	IS24I001-1
01-0030	BATTERY	IS75I001-1
01-0031	COOLING SYSTEM	IS33I001-1
01-0032	COOLING SYSTEM	IS33I013-1
01-0033	COOLING SYSTEM	IS33I002-1
01-0034	FUEL SYSTEM - FUEL TANK & ATTACHMENTS	IS35I001-1
01-0035	FUEL SYSTEM - FUEL FILTER & PIPES	IS31I001-1
01-0036	AIR FILTER	IS32I001-1
01-0037	EXHAUST	IS34I001-1
01-0038	THROTTLE CONTROL - FOR STANDARD TRANSMISSION	IS37I001-1
01-0039	THROTTLE CONTROL - FOR HYDROSTATIC TRANSMISSION	IS37I002-1
01-0040	HYDROSTATIC TRACTION DRIVE	IS87I001-1
01-0041	HYDROSTATIC TRACTION DRIVE	IS87I002-1

MF 1547 COMPACT TRACTOR  
I-IS01-001-A

I-IS01-001-A



**<https://www.ebooklibonline.com>**

Hello dear friend!

Thank you very much for reading.

Enter the link into your browser.

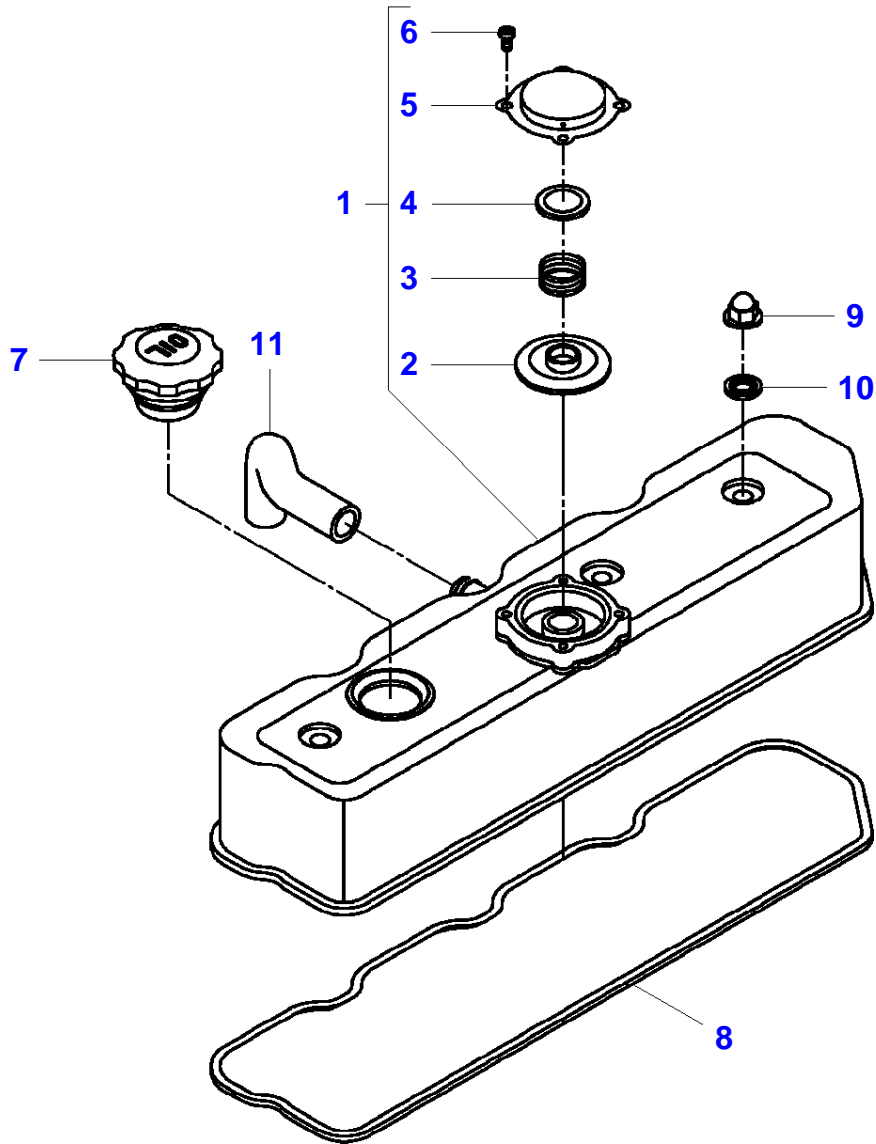
The full manual is available for immediate download.

**<https://www.ebooklibonline.com>**

Item	Part Number	Qty	Description Comments	Technical Specification
1	6240833M91	1	CYLINDER HEAD	
2	3710542M1	2	SEALING CUP (1) 50 mm	?50 MM
3	3707877M2	4	PIPE PLUG (1)	1/2"
4	3710256M1	8	VALVE OIL SEAL (1)	
5	3711713M1	1	BALL (1)	
6	3710543M1	3	SEALING CUP (1) 20 mm	?20 MM
7	3607102M1	1	CYLINDER HEAD GASKET	
8	3710536M1	18	HEXAGONAL HEAD BOLT	M10 X 92 (1.25)
9	3607420M1	3	STUD BOLT	M8 X 71 (1.25)

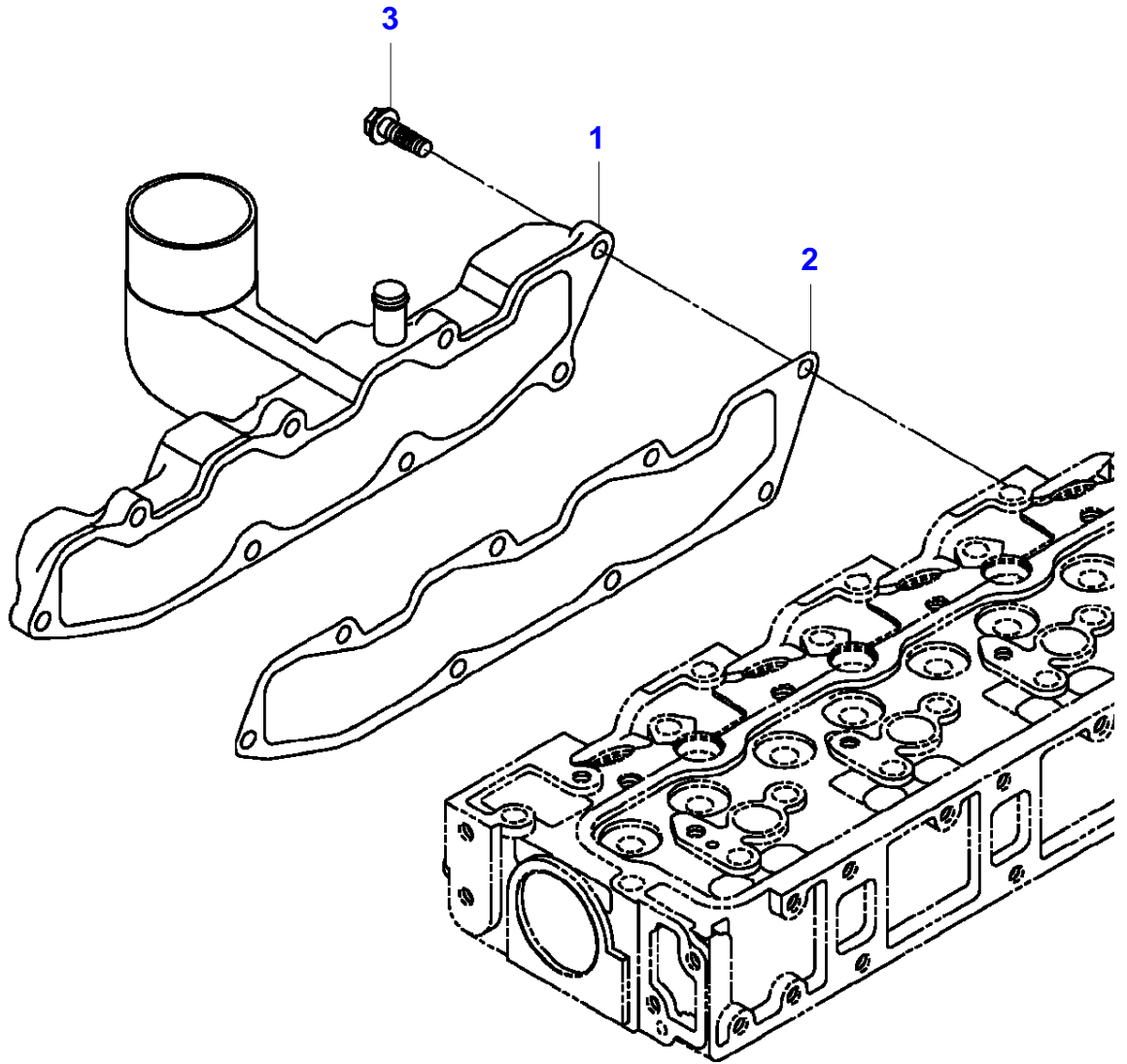
MF 1547 COMPACT TRACTOR  
I-IS02-001-A

I-IS02-001-A



Item	Part Number	Qty	Description Comments	Technical Specification
1	3607103M91	1	CYLINDER HEAD COVER	
2	3607106M1	1	RUBBER FLANGE (1)	
3	3607108M1	1	SPRING (1)	
4	3607109M1	1	SPRING SEAT (1)	
5	3607110M1	1	BLOW BY COVER (1)	
6	3710529M1	4	HEXAGONAL HEAD BOLT (1)	4 X 8"
7	3710188M1	1	OIL FILLER CAP	
8	3607105M1	1	CYLINDER HEAD COVER SEAL	
9	3710127M2	3	CAP NUT	M8
10	4266260M1	3	GASKET	
11	3607088M1	1	HOSE	

I-IS03-001-A



---

Massey Ferguson

MF 1547 COMPACT TRACTOR

3906062

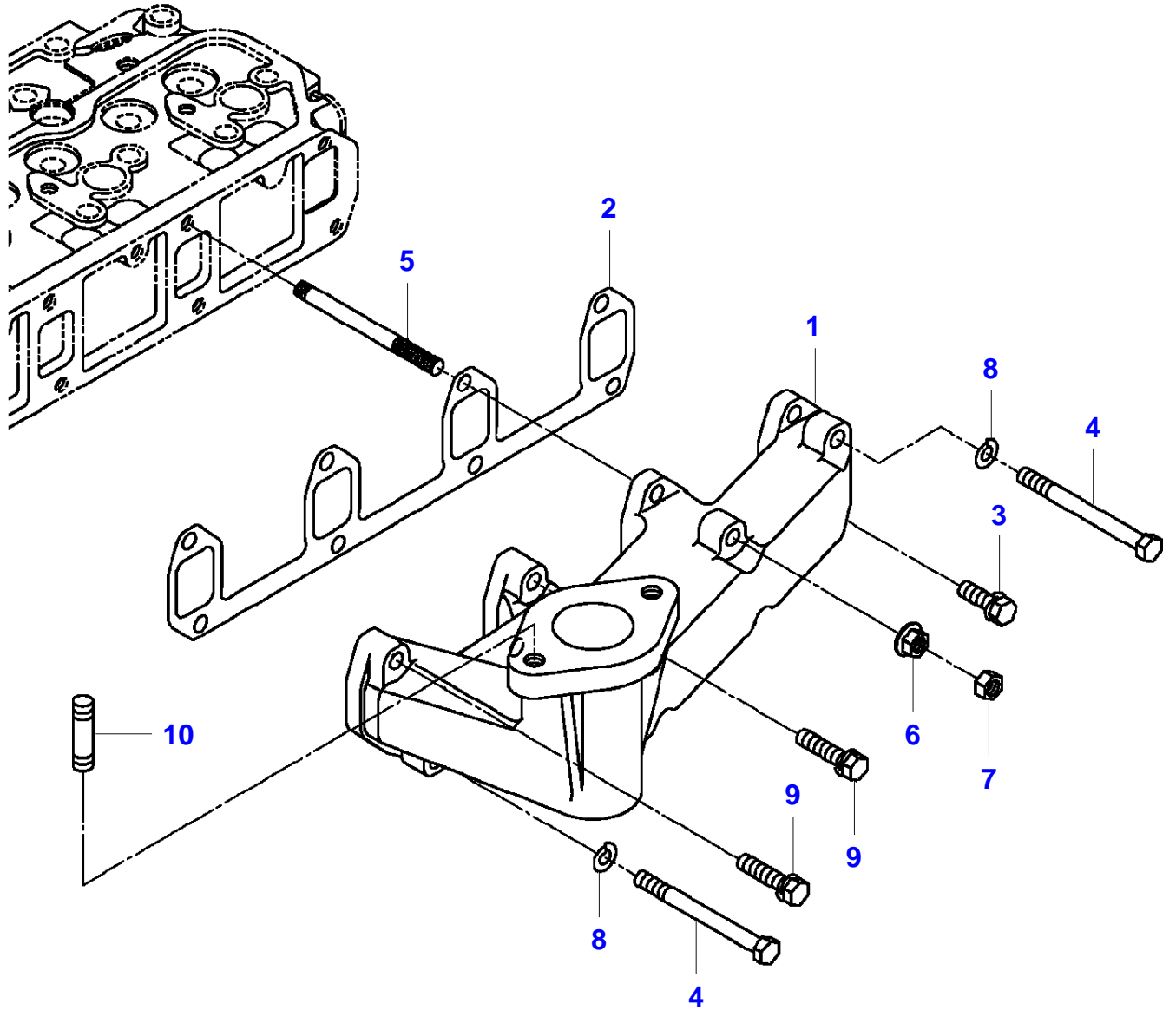
ENGINE - INTAKE MANIFOLD

Page01-0003

---

Item	Part Number	Qty	Description Comments
1	3607176M91	1	INLET MANIFOLD
2	3607178M1	1	INLET MANIFOLD GASKET
3	4267568M1	8	HEXAGON FLANGE BOLT

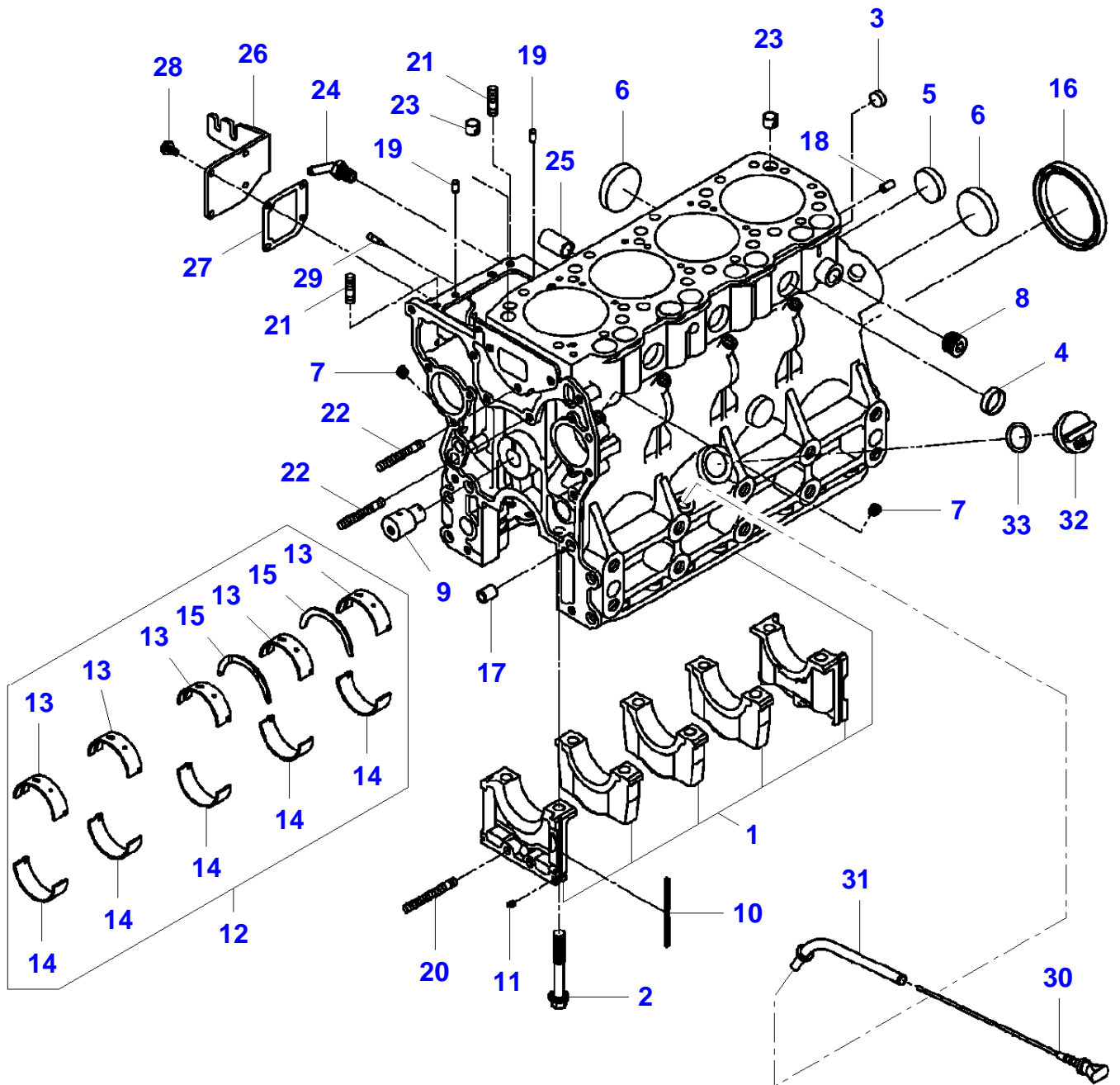
I-IS04-001-A



<b>Item</b>	<b>Part Number</b>	<b>Qty</b>	<b>Description Comments</b>	<b>Technical Specification</b>
1	6243084M1	1	EXHAUST MANIFOLD	
2	3607180M1	1	EXHAUST MANIFOLD GASKET	
3	3702273M1	1	HEXAGONAL HEAD BOLT	
4	3704594M1	2	BOLT	
5	3607087M1	3	STUD BOLT	M8 X 85
6	4260467M1	3	HEX NUT	M8
			M8	
7	1440203X1	3	HEX NUT	M8
			M8	
8	353446X1	2	LOCK WASHER	5/16"
			5/16"	
9	3607227M1	2	HEXAGONAL BOLT	M8 X 35
			M8 X 35	
10	3704355M1	2	STUD BOLT	

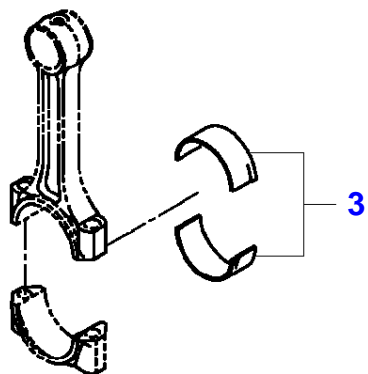
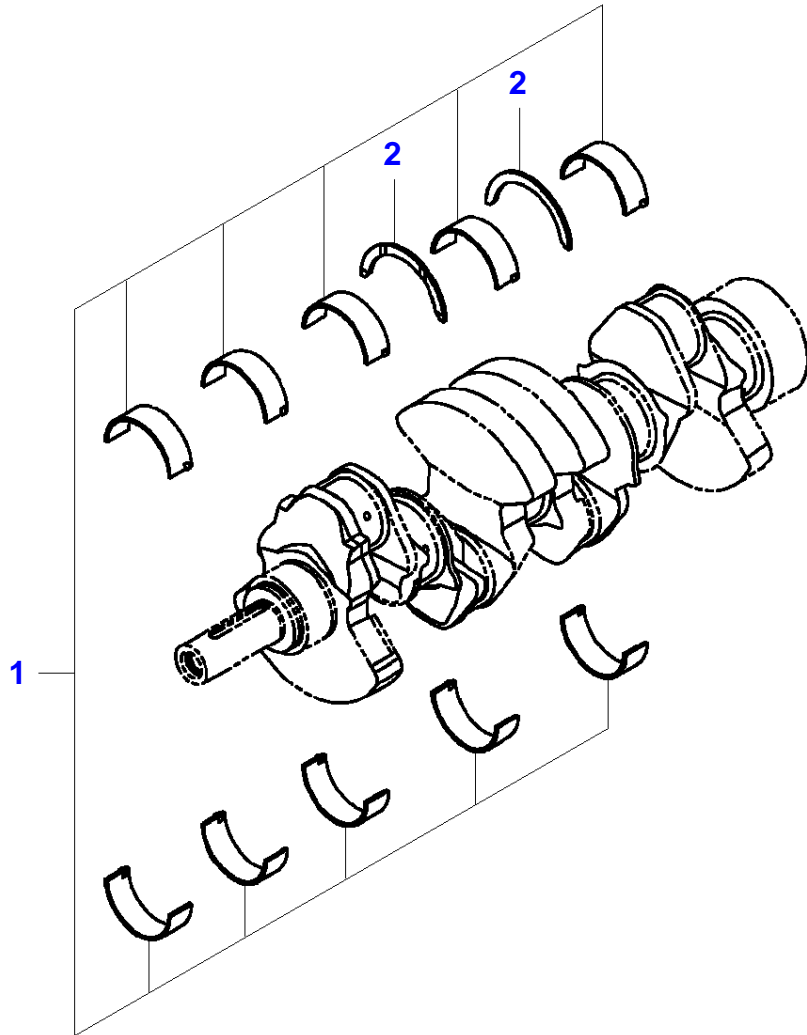
MF 1547 COMPACT TRACTOR  
I-IS05-001-A

I-IS05-001-A



Item	Part Number	Qty	Description Comments	Technical Specification
1	4267614M93	1	CYLINDER BLOCK	
2	3710537M1	10	HEXAGONAL HEAD BOLT (1)	
3	4265578M1	2	SEALING CUP (1) 16 mm	?16 MM
4	3710130M2	3	SEALING CAP (1) 28 mm	?28 MM
5	4265580M1	1	SEALING CUP (1) 36 mm	?36 MM
6	3710542M1	4	SEALING CUP (1) 50 mm	?50 MM
7	3704257M1	10	PLUG (1)	
8	3707877M2	1	PIPE PLUG (1)	1/2"
9	3711695M3	1	PIN (1)	
10	3710160M1	4	BEARING CAP SEAL	
11	3710161M1	2	BEARING CAP SEAL	?7 MM
12	3607122M91	1	BEARING SET	
13	3710572M1	5	CRANKSHAFT BEARING (12) TOP	
14	3710573M1	5	CRANKSHAFT BEARING (12) BOTTOM	
15	3710580M1	2	THRUST BEARING (12)	
16	3710544M2	1	OIL SEAL	
17	3710137M2	2	DOWEL PIN	
18	4266242M1	2	STRAIGHT PIN	?8 X 16 MM
19	3757960M1	2	PIN	?6 X 12 MM
20	3754115M1	1	BOLT	M8 X 60
21	3704353M1	2	STUD BOLT	M8 X 22
22	3710484M1	2	STUD BOLT	M8 X 50
23	3758287M1	2	DOWEL PIN	
24	3754123M1	1	WATER DRAIN PIPE	
25	4264261M1	1	OIL FILTER CONNECTOR	
26	3756975M3	1	INJECTION PUMP COVER	
27	3710163M1	1	COVER SEAL	
28	4267405M1	4	HEXAGON FLANGE BOLT	
29	3710411M1	1	SPRING PIN	
30	6243049M1	1	OIL DIPSTICK	
31	6242061M91	1	GUIDE	
32	3756982M1	1	OIL FILTER CAP	
33	3756940M1	1	O-RING	

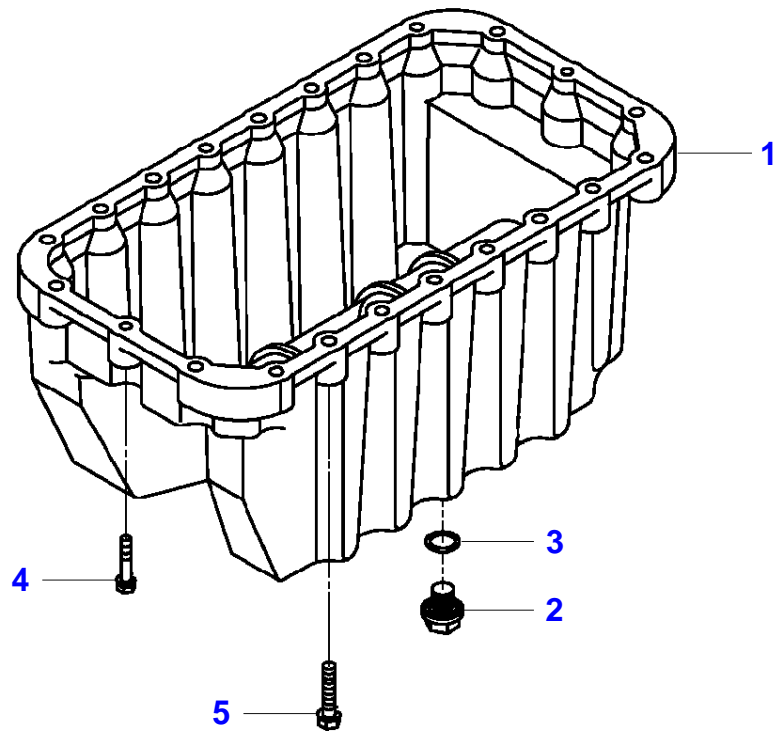
I-IS06-001-A



<b>Item</b>	<b>Part Number</b>	<b>Qty</b>	<b>Description</b>	<b>Technical Specification</b>
1	3607123M91	1	BEARING SET Comments 0.25mm	.010 UNDERSIZED
	3607124M91	1	BEARING SET 0.50mm	.020 UNDERSIZED
2	3710580M1	2	THRUST BEARING (1)	
3	4266964M1	4	BEARING	+0,25 MM
	4266969M1	4	BEARING	+0,50 MM

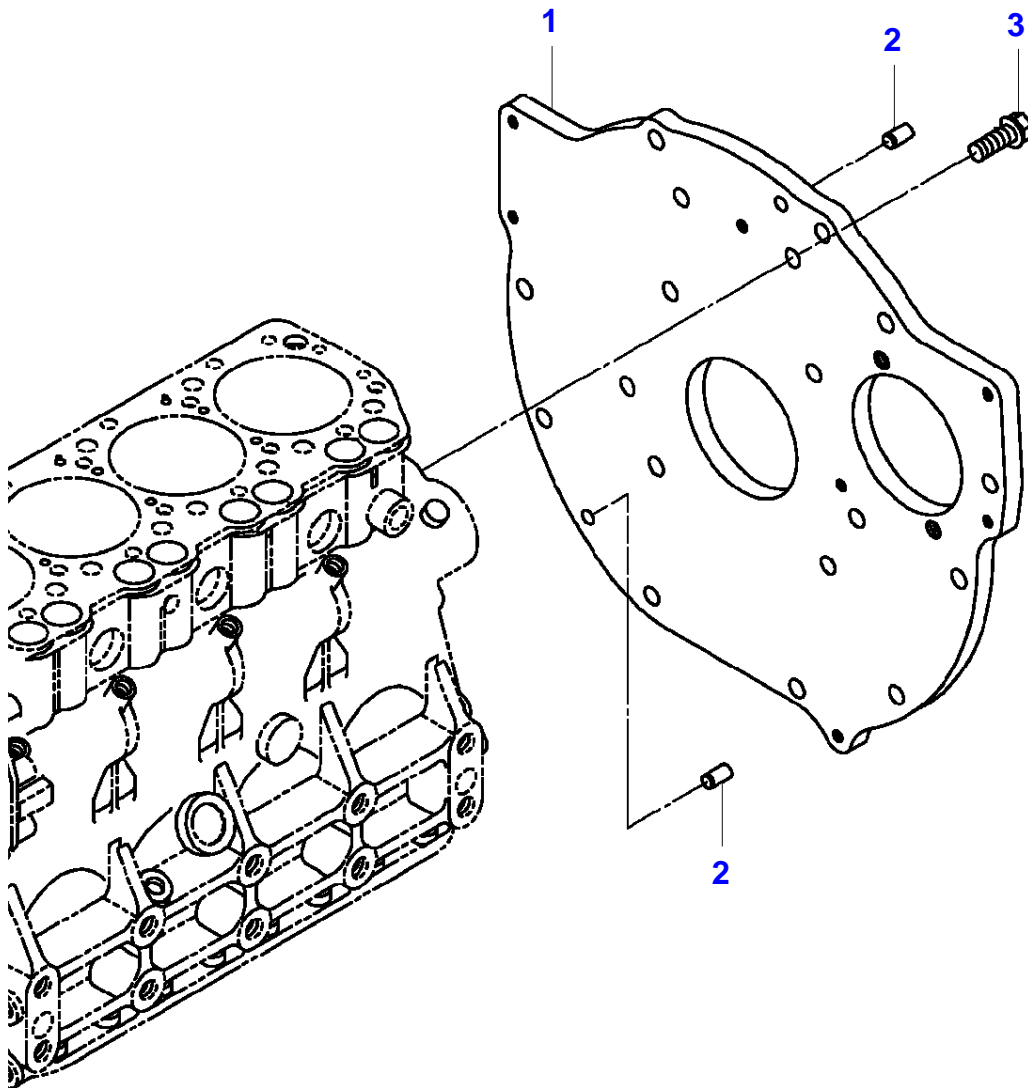
MF 1547 COMPACT TRACTOR  
I-IS07-001-A

I-IS07-001-A



<b>Item</b>	<b>Part Number</b>	<b>Qty</b>	<b>Description Comments</b>	<b>Technical Specification</b>
1	3607121M1	1	OIL SUMP	
2	3607358M2	2	PLUG M14	M14 (1.5)
3	3708620M1	2	O-RING	
4	3704335M1	2	HEX CAP SCREW	
5	3710481M1	20	HEXAGONAL BOLT	M8 X 40

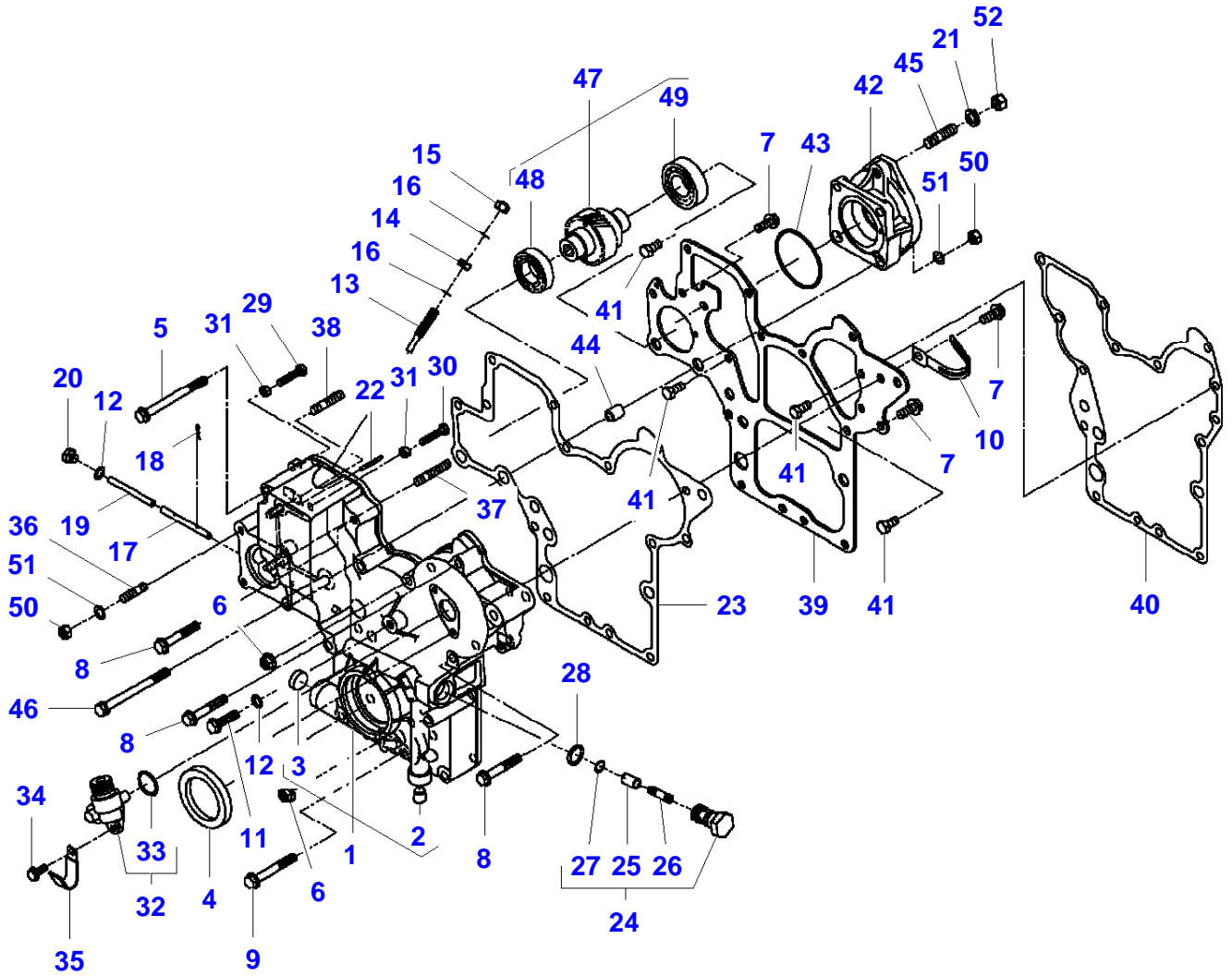
I-IK79-001-A



<b>Item</b>	<b>Part Number</b>	<b>Qty</b>	<b>Description Comments</b>	<b>Technical Specification</b>
1	6243046M1	1	PLATE	
2	3757959M1	2	PIN	?10 X 18 MM
3	3607086M1	8	HEXAGONAL BOLT	M12-1.5 X 35

MF 1547 COMPACT TRACTOR  
I-IS09-001-A

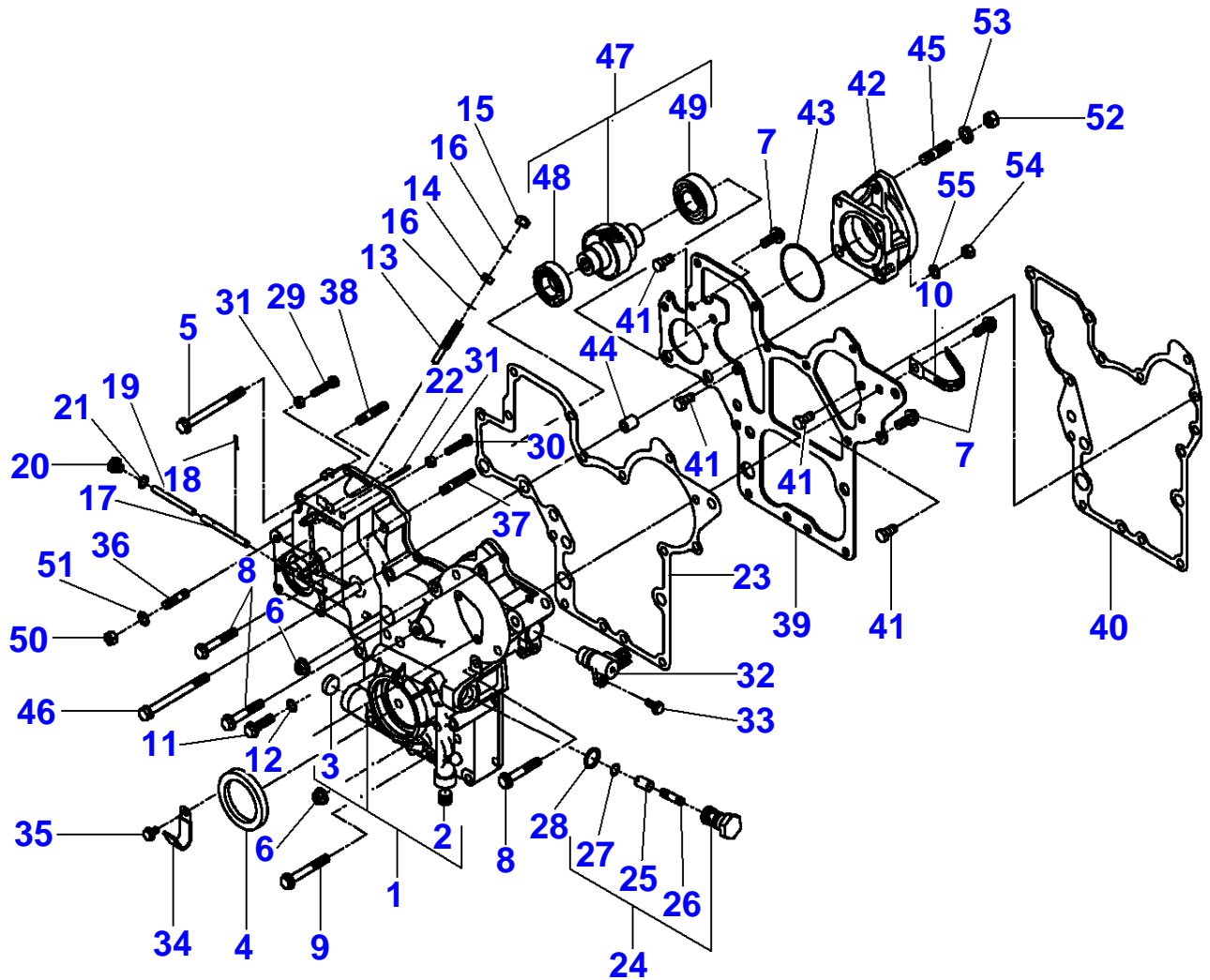
I-IS09-001-A



Item	Part Number	Qty	Description Comments	Technical Specification
1	6243040M91	1	TIMING GEAR CASE	
2	3710541M2	1	PIPE PLUG (1)	0.25 NPT
3	3710543M1	1	SEALING CUP (1) 20 mm	?20 MM
4	3607090M1	1	OIL SEAL	
5	6240916M1	2	HEXAGON FLANGE BOLT	
6	4260467M1	2	HEX NUT M8	M8
7	4267567M1	3	HEXAGON FLANGE BOLT	
8	4267572M1	3	HEXAGON FLANGE BOLT	
9	4267574M1	5	HEXAGON FLANGE BOLT	
10	3756922M1	1	CLAMP	
11	4267569M1	1	HEXAGON FLANGE BOLT	
12	3756923M1	2	FLAT WASHER 8-14 X 1	?8-14 X 1 MM
13	3710404M2	1	STOP	
14	3710125M1	1	NUT	
15	3708581M1	1	CAP NUT	M8
16	3758721M1	2	SEAL	
17	3710400M1	1	ARM PIN	
18	3754238M1	2	PIN	
19	3710401M2	1	PIN	
20	4266261M1	1	SCREW PLUG	M8 (1.25)
21	339376X1	2	LOCKWASHER M10	M10 ZN
22	3607092M1	1	GROOVE PIN	?3 X 32 MM
23	3607116M1	1	GEAR CASE GASKET	
24	3607433M91	1	RELIEF VALVE	
25	3605697M2	1	RELIEF VALVE PISTON (24)	
26	3710279M1	1	RELIEF SPRING (24)	
27	3711702M1	1	SNAP RING (24)	
28	3708620M1	1	O-RING	
29	3710119M1	1	HEX CAP SCREW	
30	3710120M1	1	HEXAGONAL HEAD BOLT	M6
31	3710489M1	2	NUT	
32	3606142M92	1	TACHOMETER DRIVE	
33	3708632M1	1	O-RING (32)	
34	4267406M1	2	HEXAGON FLANGE BOLT	
35	3607083M1	1	CLAMP	7"
36	3704353M1	3	STUD BOLT	M8 X 22
37	4264385M1	1	BOLT	M8 X 35
38	4264680M1	1	STUD BOLT M8 X 30	M8 X 30
39	6243042M1	1	PLATE	
40	3607117M1	1	PLATE GASKET	
41	3710482M1	4	HEXAGONAL BOLT	M8 X 16
42	6243045M1	1	SPACER	
43	3706759M1	1	O RING	
44	3710137M2	2	DOWEL PIN	
45	3754282M1	2	BOLT	M10 X 25
46	3704085M1	1	HEXAGONAL BOLT	M8 X 62
47	6243079M91	1	HYDRAULIC SHAFT	
48	6242095M1	1	BEARING (47)	
49	4264545M1	1	BEARING (47)	
50	3704361M1	5	NUT	
51	353446X1	5	LOCK WASHER 5/16"	5/16"
52	339402X1	2	HEX NUT M10	M10 (1.5) ISO 8 ZN

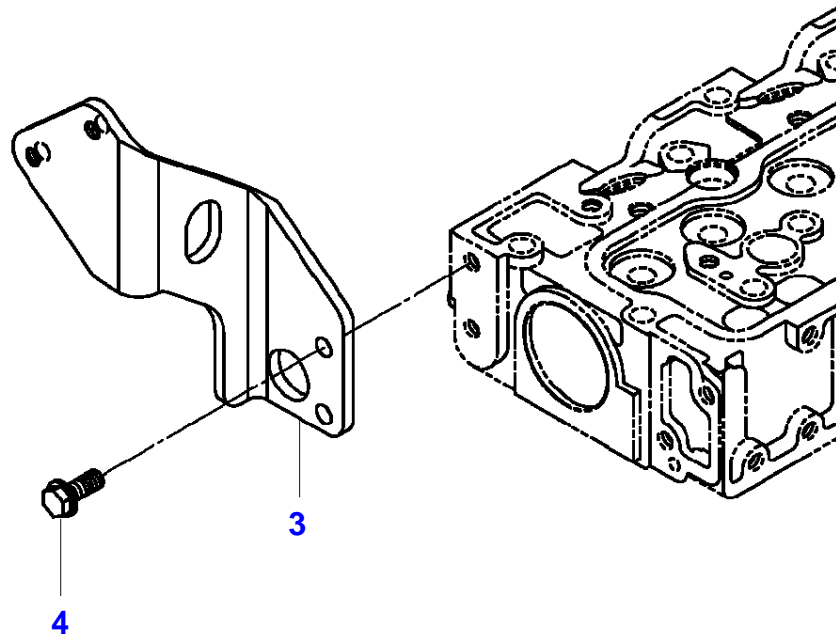
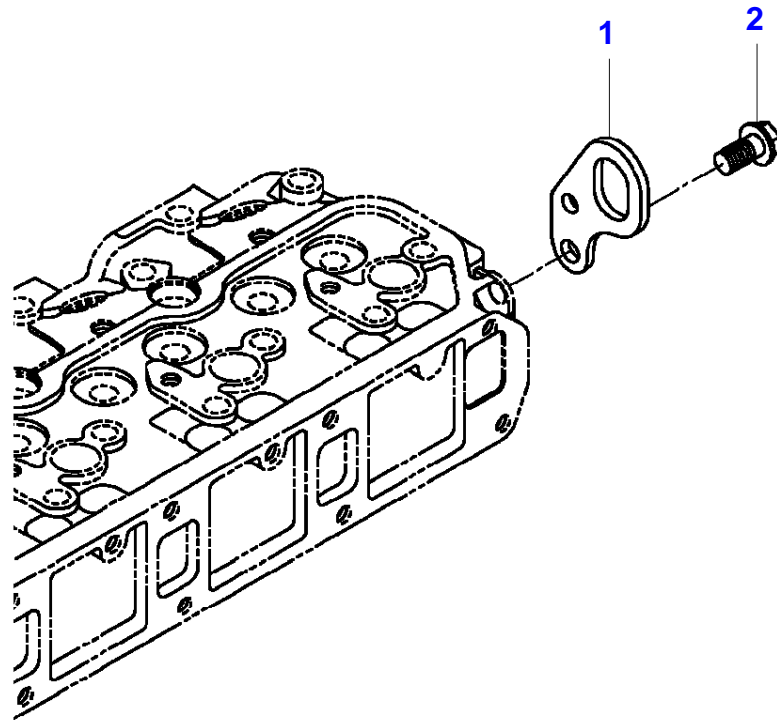
MF 1547 COMPACT TRACTOR  
I-IS09-009-A

I-IS09-009-A



Item	Part Number	Qty	Description Comments	Technical Specification
1	6250292M91	1	TIMING GEAR CASE	
2	3710541M2	1	PIPE PLUG (1)	0.25 NPT
3	3710543M1	1	SEALING CUP (1) 20 mm	?20 MM
4	3607090M1	1	OIL SEAL	
5	6240916M1	2	HEXAGON FLANGE BOLT	
6	4260467M1	2	HEX NUT M8	M8
7	4267567M1	3	HEXAGON FLANGE BOLT	
8	4267572M1	3	HEXAGON FLANGE BOLT	
9	4267574M1	5	HEXAGON FLANGE BOLT	
10	3756922M1	1	CLAMP	
11	4267569M1	1	HEXAGON FLANGE BOLT	
12	3756923M1	2	FLAT WASHER 8-14 X 1	?8-14 X 1 MM
13	3710404M2	1	STOP	
14	3710125M1	1	NUT	
15	3708581M1	1	CAP NUT	M8
16	3758721M1	2	SEAL	
17	3710400M1	1	ARM PIN	
18	3754238M1	2	PIN	
19	3710401M2	1	PIN	
20	4266261M1	1	SCREW PLUG	M8 (1.25)
21	3756923M1	2	FLAT WASHER 08X14X01	?8-14 X 1 MM
22	3607092M1	1	GROOVE PIN	?3 X 32 MM
23	3607116M1	1	GEAR CASE GASKET	
24	3607433M91	1	RELIEF VALVE	
25	3605697M2	1	RELIEF VALVE PISTON (24)	
26	3710279M1	1	RELIEF SPRING (24)	
27	3711702M1	1	SNAP RING (24)	
28	3708620M1	1	O-RING	
29	3710119M1	1	HEX CAP SCREW	
30	3710120M1	1	HEXAGONAL HEAD BOLT	M6
31	3710489M1	2	NUT	
32	6250284M91	1	SENSOR	
33	4267406M1	1	HEXAGON FLANGE BOLT (32)	
34	3607083M1	1	CLAMP	7"
35	4267404M1	1	HEXAGON FLANGE BOLT	
36	3704353M1	3	STUD BOLT	M8 X 22
37	4264385M1	1	BOLT	M8 X 35
38	4264680M1	1	STUD BOLT	M8 X 30
39	6243042M1	1	PLATE	
40	3607117M1	1	PLATE GASKET	
41	3710482M1	4	HEXAGONAL BOLT	M8 X 16
42	6243045M1	1	SPACER	
43	3706759M1	1	O RING	
44	3710137M2	2	DOWEL PIN	
45	3754282M1	2	BOLT	M10 X 25
46	3704085M1	1	HEXAGONAL BOLT	M8 X 62
47	6243079M91	1	HYDRAULIC SHAFT	
48	6242095M1	1	BEARING	
49	4264545M1	1	BEARING	
50	3704361M1	2	NUT	
51	353446X1	2	LOCK WASHER	5/16"
52	339402X1	2	HEX NUT	M10 (1.5) ISO 8 ZN
53	339376X1	2	LOCKWASHER	M10 ZN
54	3704361M1	3	NUT	
55	353446X1	3	LOCK WASHER	5/16"

I-IS10-001-A



<b>Item</b>	<b>Part Number</b>	<b>Qty</b>	<b>Description Comments</b>
1	3710190M3	1	HANGER UP TO SERIAL OR ENGINE NUMBER 7760 ENG.E4CGVB19 ENG.E4CGVB24
2	4268574M1	1	HEXAGON FLANGE BOLT UP TO SERIAL OR ENGINE NUMBER 7760 ENG.E4CGVB19 ENG.E4CGVB24
3	6243050M1	1	HANGER
4	4267567M1	2	HEXAGON FLANGE BOLT



**Suggest:**

**If the above button click is invalid.**

**Please download this document**

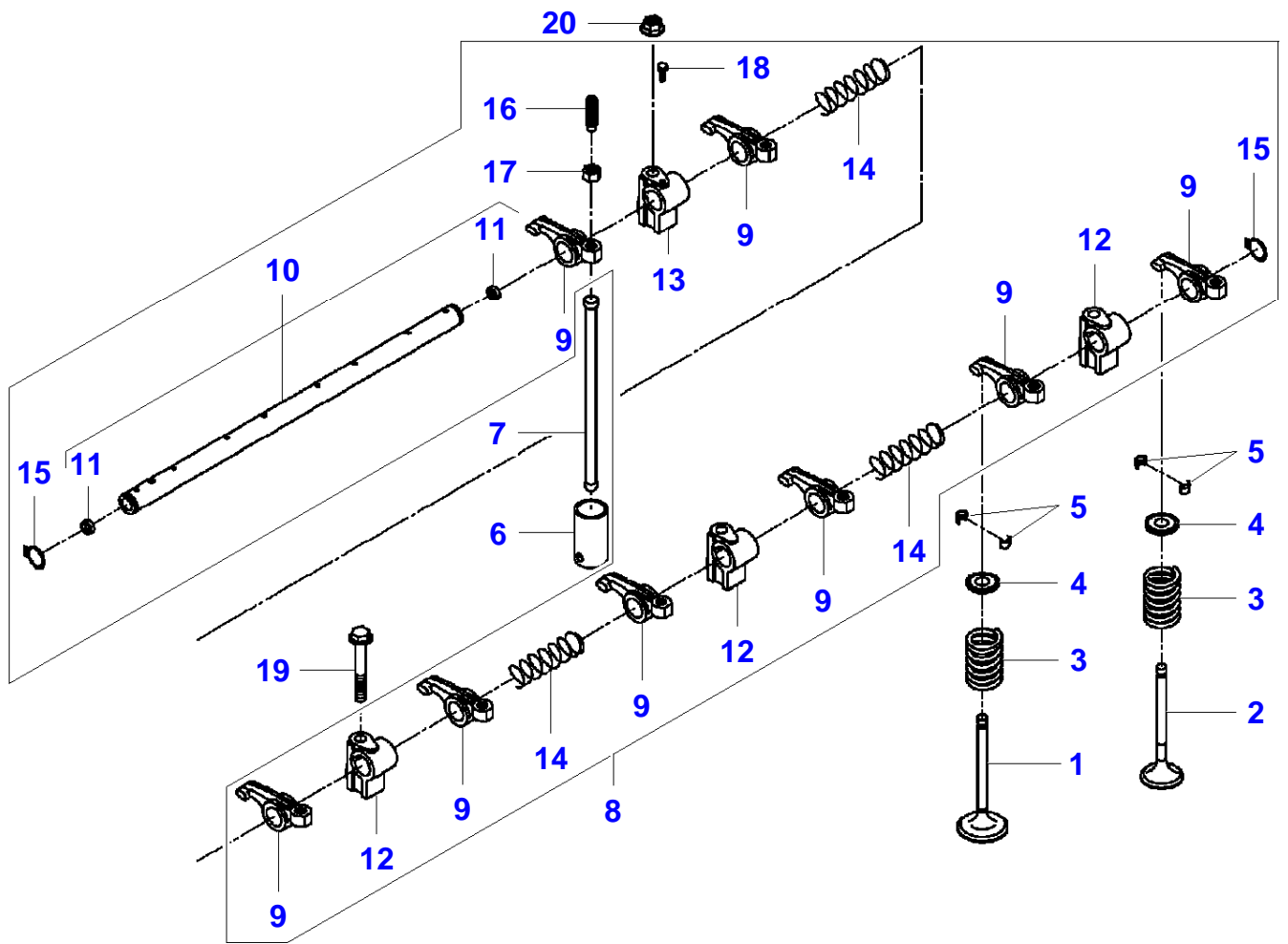
**first, and then click the above link**

**to download the complete manual.**

**Thank you so much for reading**

MF 1547 COMPACT TRACTOR  
I-IS11-001-A

I-IS11-001-A



**<https://www.ebooklibonline.com>**

Hello dear friend!

Thank you very much for reading.

Enter the link into your browser.

The full manual is available for immediate download.

**<https://www.ebooklibonline.com>**