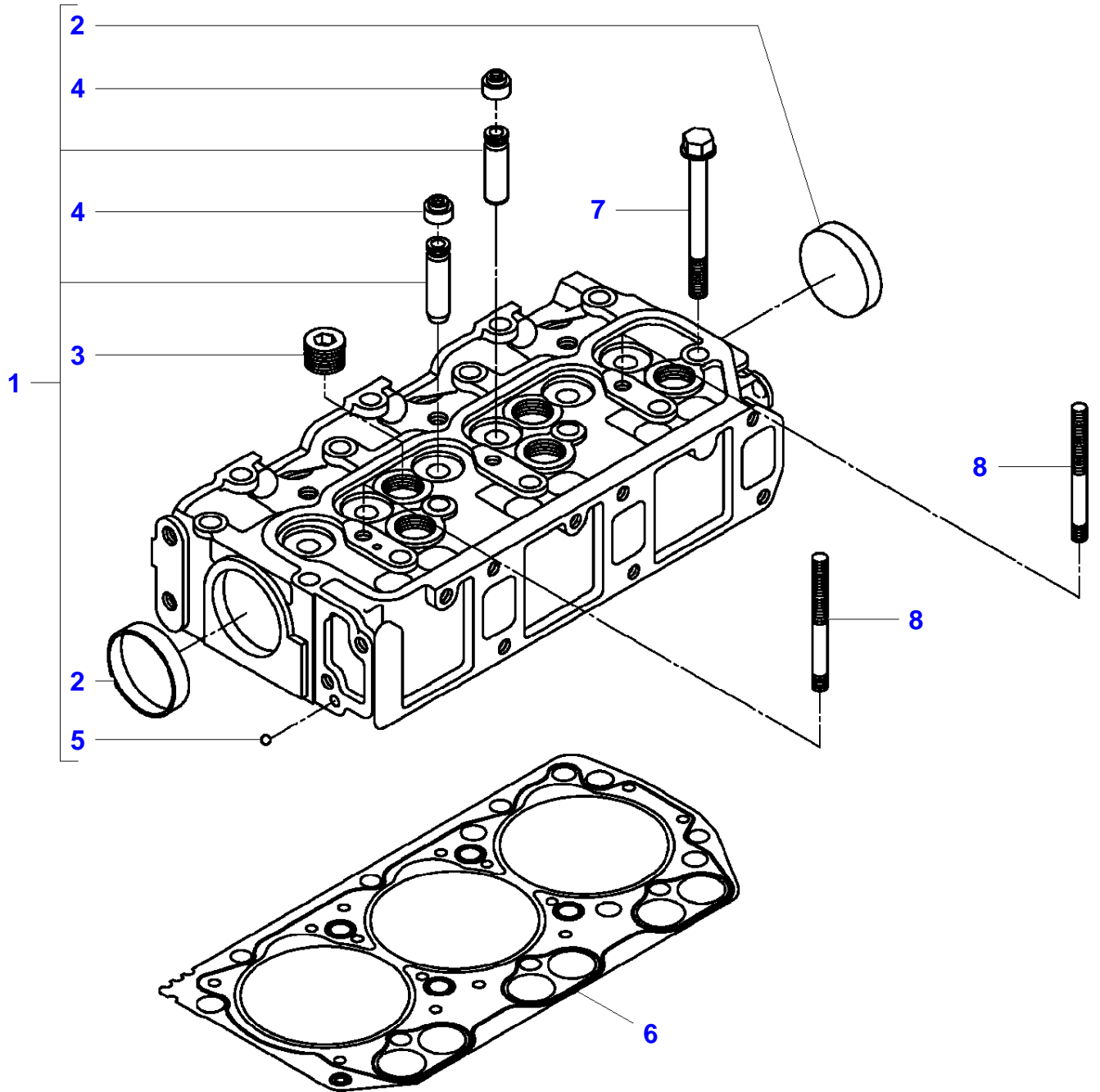


Page Title	Page Number
Engine - Cylinder Head	010-0005
Engine - Cylinder Head Cover	010-0010
Engine - Intake Manifold	010-0015
Engine - Exhaust Manifold	010-0020
Engine - Turbo Compressor	010-0025
Engine - Cylinder Block	010-0030
Engine - Cylinder Block	010-0035
Engine - Connecting Rod Bearings - Repair Kit	010-0040
Engine - Oil Sump	010-0045
Engine - Rear Plate	010-0050
Engine - Timing Gear Housing	010-0055
Engine - Hanger	010-0060
Engine - Rocker Arm	010-0065
Engine - Camshaft	010-0070
Engine - Piston	010-0075
Engine - Crankshaft	010-0080
Engine - Oil Pump	010-0085
Engine - Water Pump	010-0090
Engine - Fan	010-0095
Engine - Injection System	010-0100
Engine - Injection System - Injection Nozzle	010-0105
Engine - Injection Pump	010-0110
Engine - Injection Pump	010-0115
Engine - Fuel Pipe	010-0120
Engine - Repair Kit	010-0125

I-IS01-002-A



Massey Ferguson**MF 1540 COMPACT TRACTOR - 3906060**

3906060

Engine - Cylinder Head

Page010-0005

Item	Part Number	Qty	Description	Comments
1	6242277M92	1	Cylinder Head	
2	3710542M1	2	Cup	(1) Diameter 50 mm
3	3707877M2	5	Plug	(1)
4	3710256M1	6	Oil Seal	(1)
5	3711713M1	1	Ball	(1)
6	6242056M2	1	Head Gasket	
7	3710536M1	14	Hex Screw	
8	3607420M1	2	Stud	

<https://www.ebooklibonline.com>

Hello dear friend!

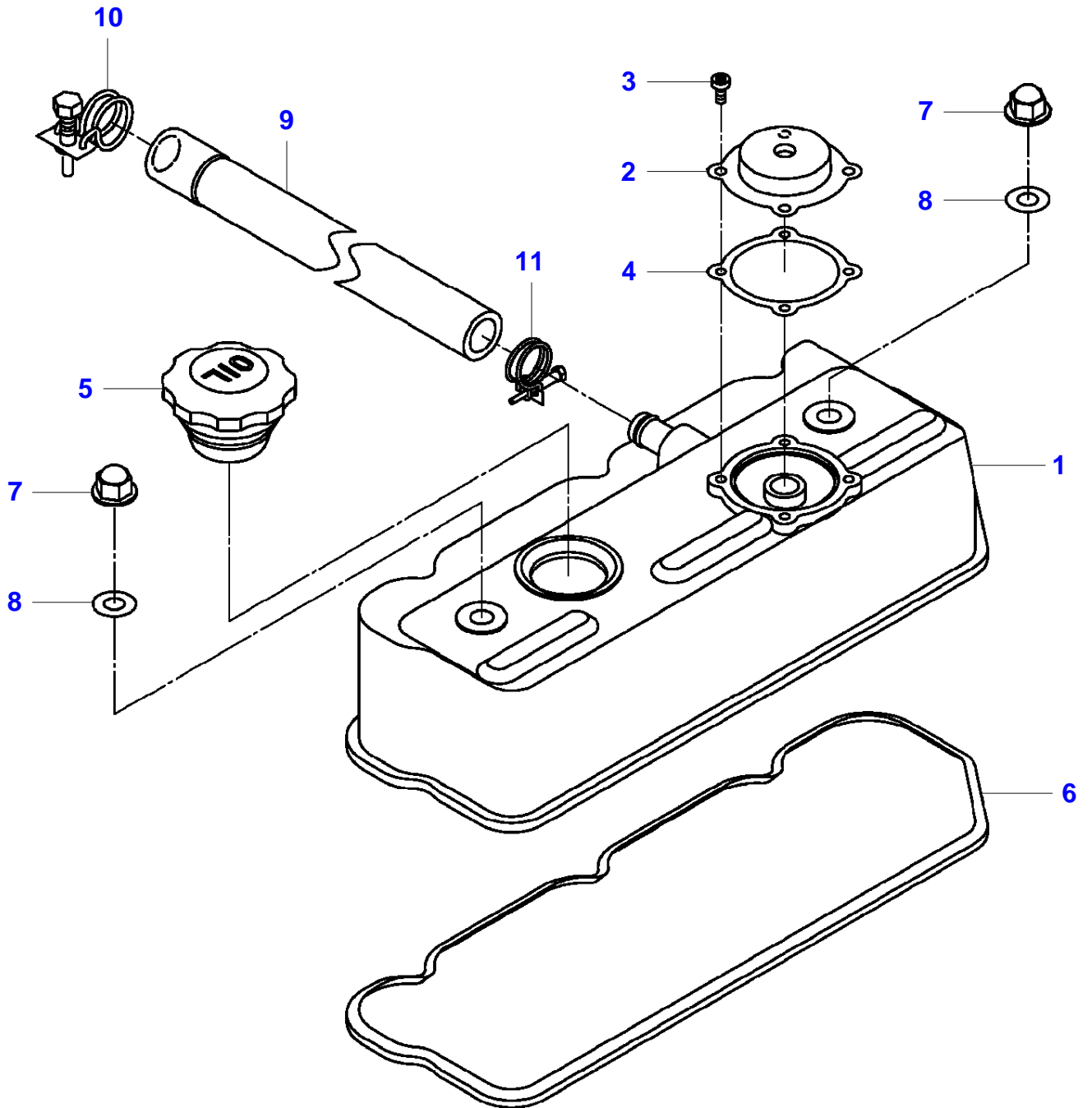
Thank you very much for reading.

Enter the link into your browser.

The full manual is available for immediate download.

<https://www.ebooklibonline.com>

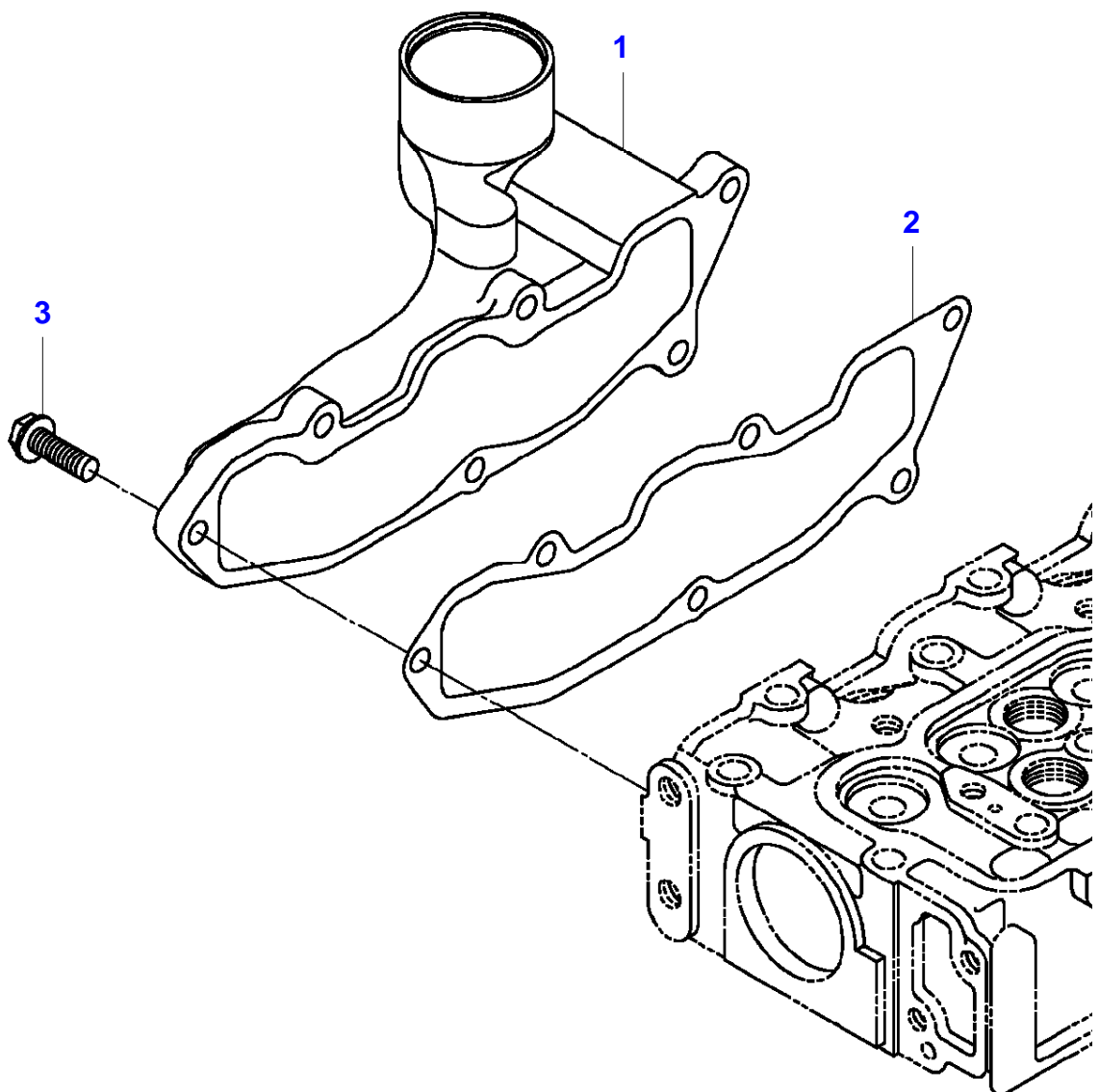
I-IS02-003-A



Engine - Cylinder Head Cover

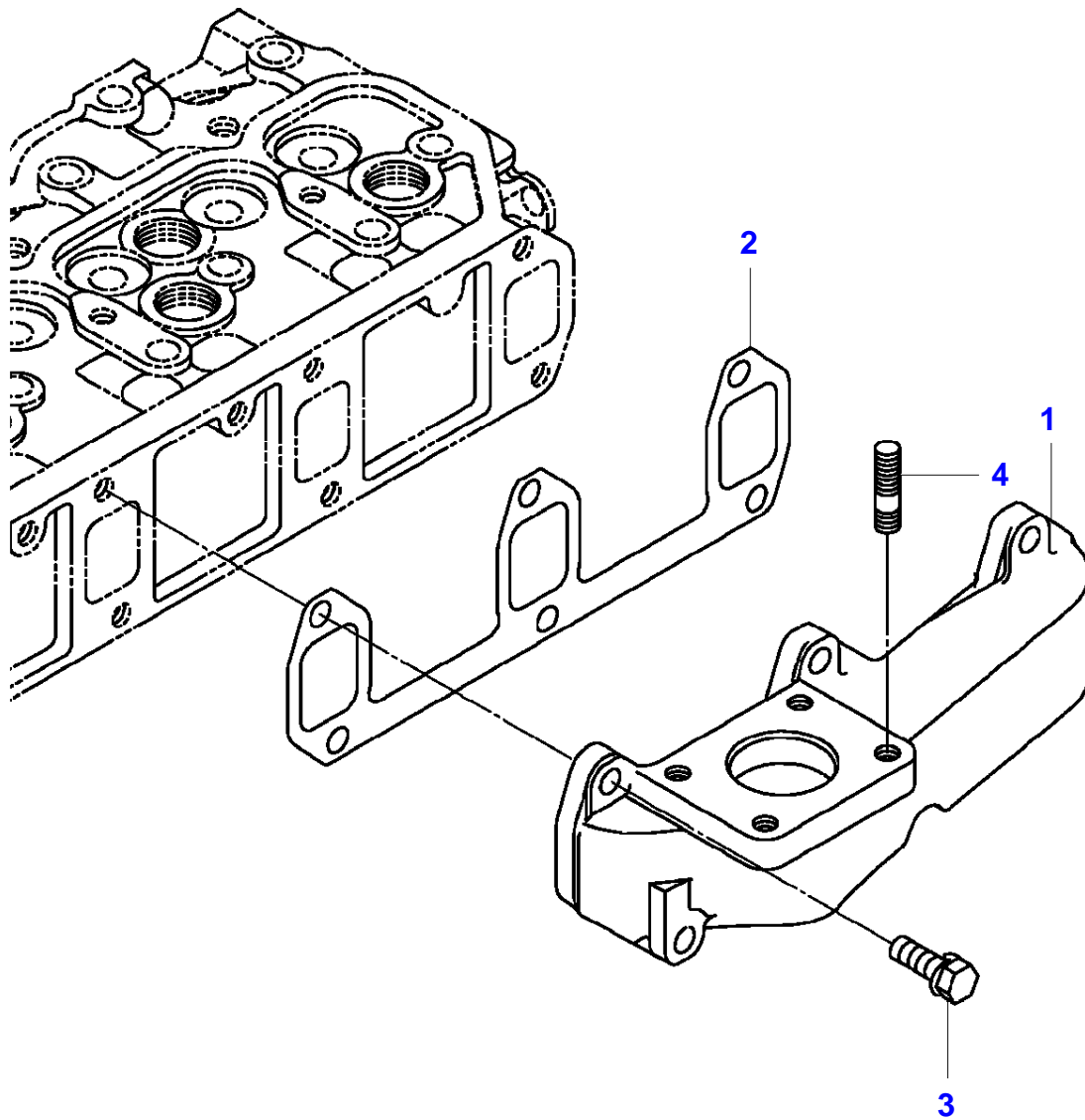
Item	Part Number	Qty	Description	Comments
1	3608540M92	1	Valve Cover	
2	6242410M1	1	Cover	
3	3710529M1	4	Hex Socket Screw	
4	6242409M1	1	Packing	
5	3710188M1	1	Plug	
6	3710553M1	1	Gasket	
7	3710127M2	2	Nut	
8	4267629M1	2	Gasket	
9	6242263M1	1	Hose	
10	3756937M1	1	Hose Clip	Diameter 16-20
11	3756936M1	1	Hose Clip	Diameter 13-18

I-IS03-003-A



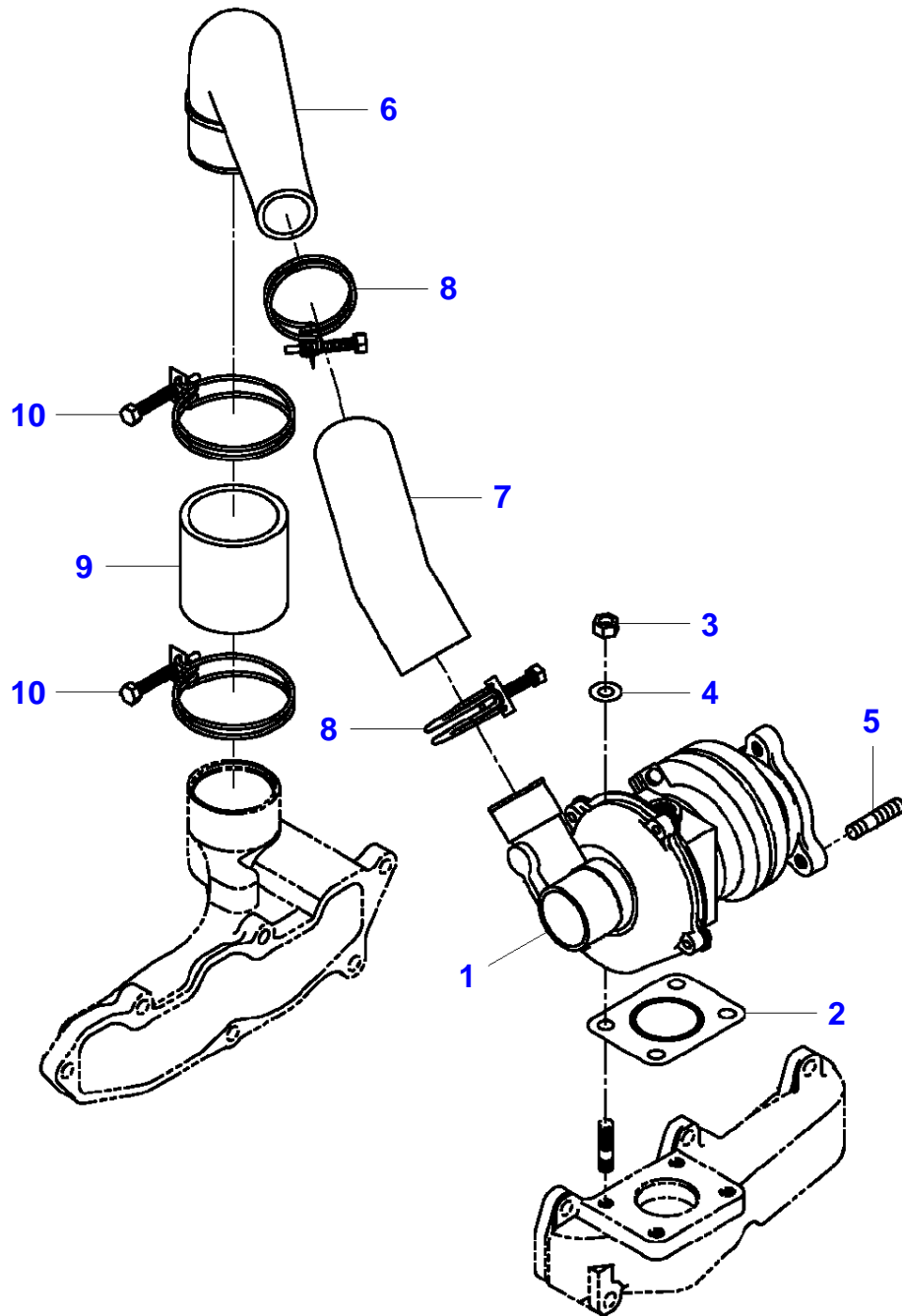
Item	Part Number	Qty	Description
1	3757060M1	1	Intake Manifold
2	3710649M1	1	Gasket
3	4267568M1	6	Hex Screw

I-IS04-003-A



Item	Part Number	Qty	Description
1	6242125M1	1	Exhaust Manifold
2	3710652M1	1	Gasket
3	3702273M1	6	Hex Screw
4	4265608M1	4	Stud

I-IS08-001-A



Massey Ferguson**MF 1540 COMPACT TRACTOR - 3906060**

3906060

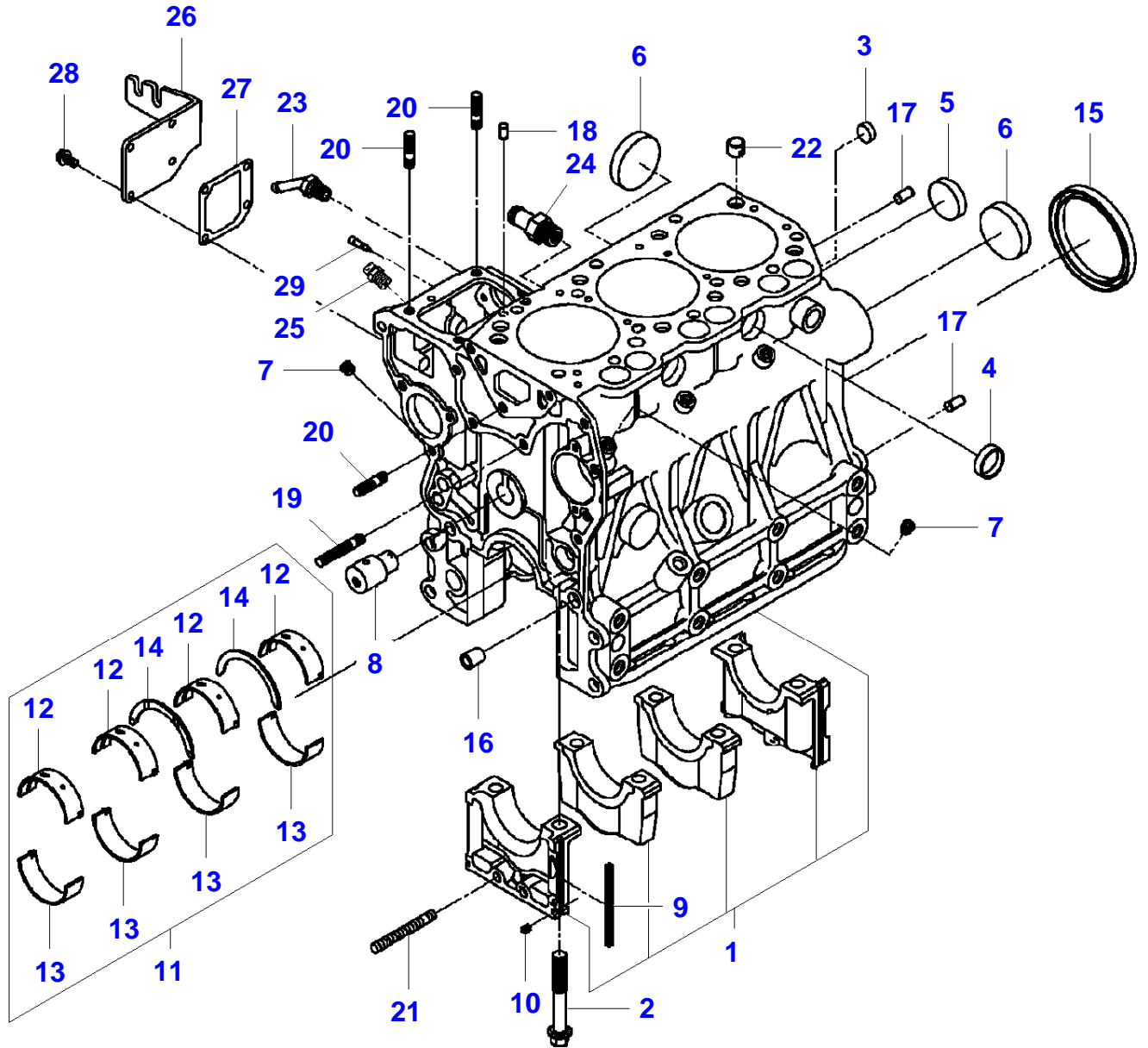
Engine - Turbo Compressor

Page010-0025

Item	Part Number	Qty	Description	Comments
1	6242205M91	1	Turbocharger	
2	3757061M1	1	Gasket	
3	3756938M1	4	Nut	
4	3704671M1	4	Washer	
5	3704597M1	3	Stud	
6	6242127M1	1	Pipe	
7	6242253M1	1	Hose	
8	3755568M1	2	Hose Clip	Diameter 38-46
9	6242254M1	1	Hose	
10	3755572M1	2	Hose Clip	Diameter 52-63

MF 1540 COMPACT TRACTOR - 3906060
I-IS05-003-A

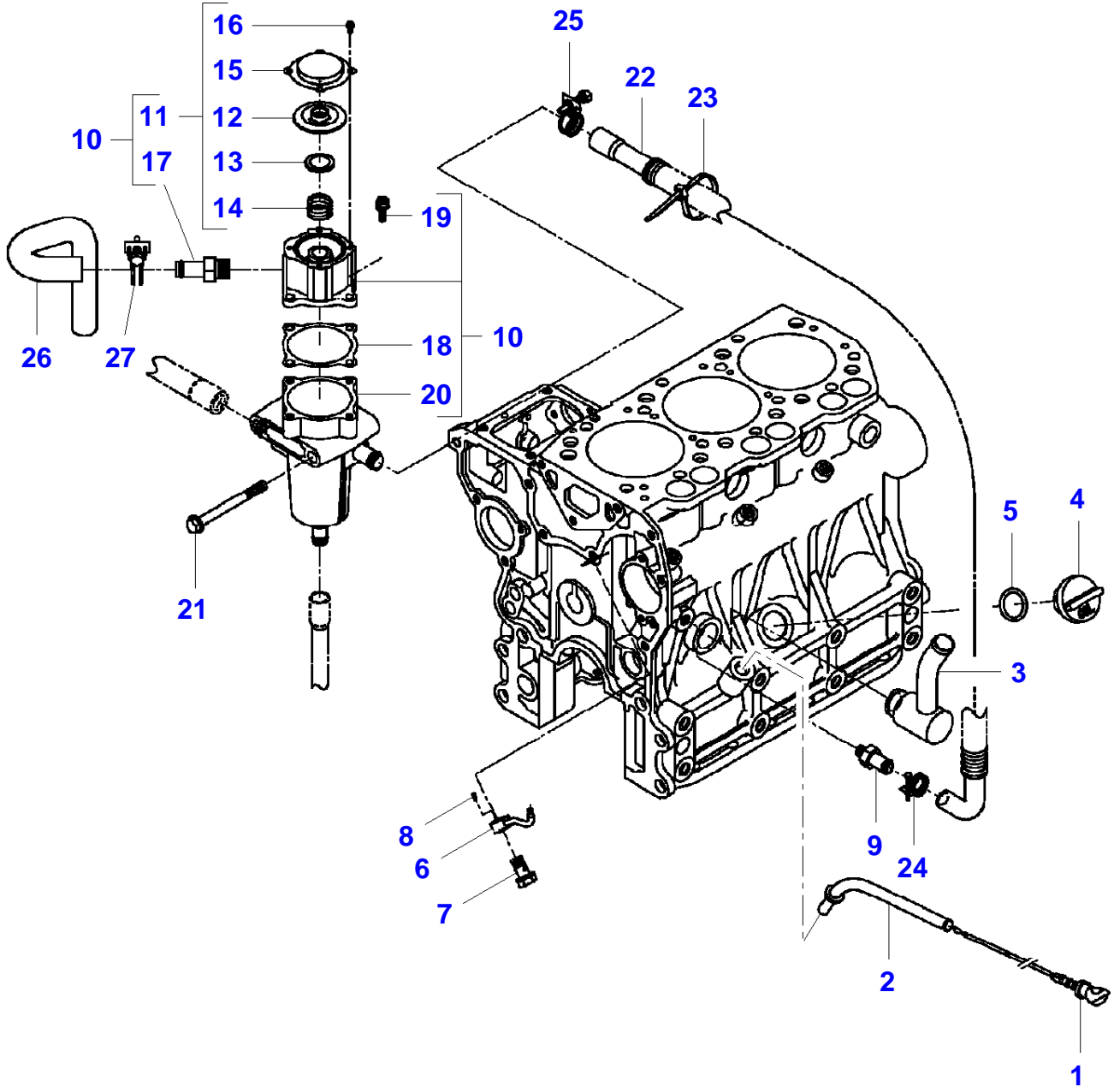
I-IS05-003-A



Engine - Cylinder Block

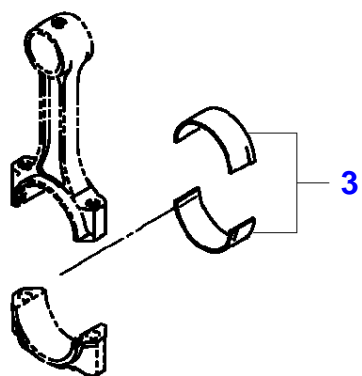
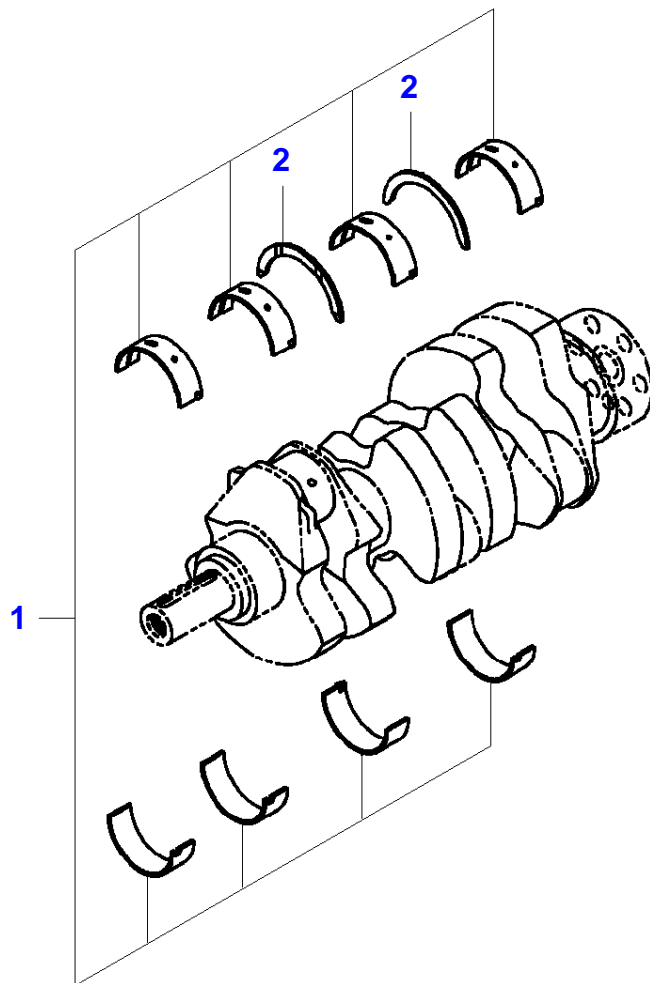
Item	Part Number	Qty	Description	Comments
1	6242101M91	1	Cylinder Block	
2	3710537M1	8	Hex Screw	(1)
3	4265578M1	2	Cup	(1) Diameter 16 mm
4	3710130M2	2	Cup	(1) Diameter 28 mm
5	4265580M1	1	Cup	(1) Diameter 36 mm
6	3710542M1	3	Cup	(1) Diameter 50 mm
7	3704257M1	8	Plug	(1)
8	3711695M3	1	Pin	(1)
9	3710160M1	4	Seal	
10	3710161M1	2	Seal	Diameter 7 mm
11	3710571M91	1	Kit, Bearing	
12	3710572M1	4	Bearing	(11)
13	3710573M1	4	Bearing	(11)
14	3710580M1	2	Bearing Thrust	(11)
15	3710544M2	1	Oil Seal	
16	3710137M2	2	Pin	
17	4266242M1	2	Pin	
18	3757960M1	2	Pin	
19	3706536M1	1	Stud	M8 X 40
20	3704353M1	3	Stud	
21	3754115M1	1	Stud	
22	3758287M1	2	Dowel	
23	3754123M1	1	Pipe,Water	
24	3757056M1	1	Pipe,Water	
25	3704382M1	1	Nipple	
26	3756975M3	1	Cover	
27	3710163M1	1	Gasket	
28	4267405M1	4	Bolt	
29	3710411M1	1	Pin	

I-IS05-004-A



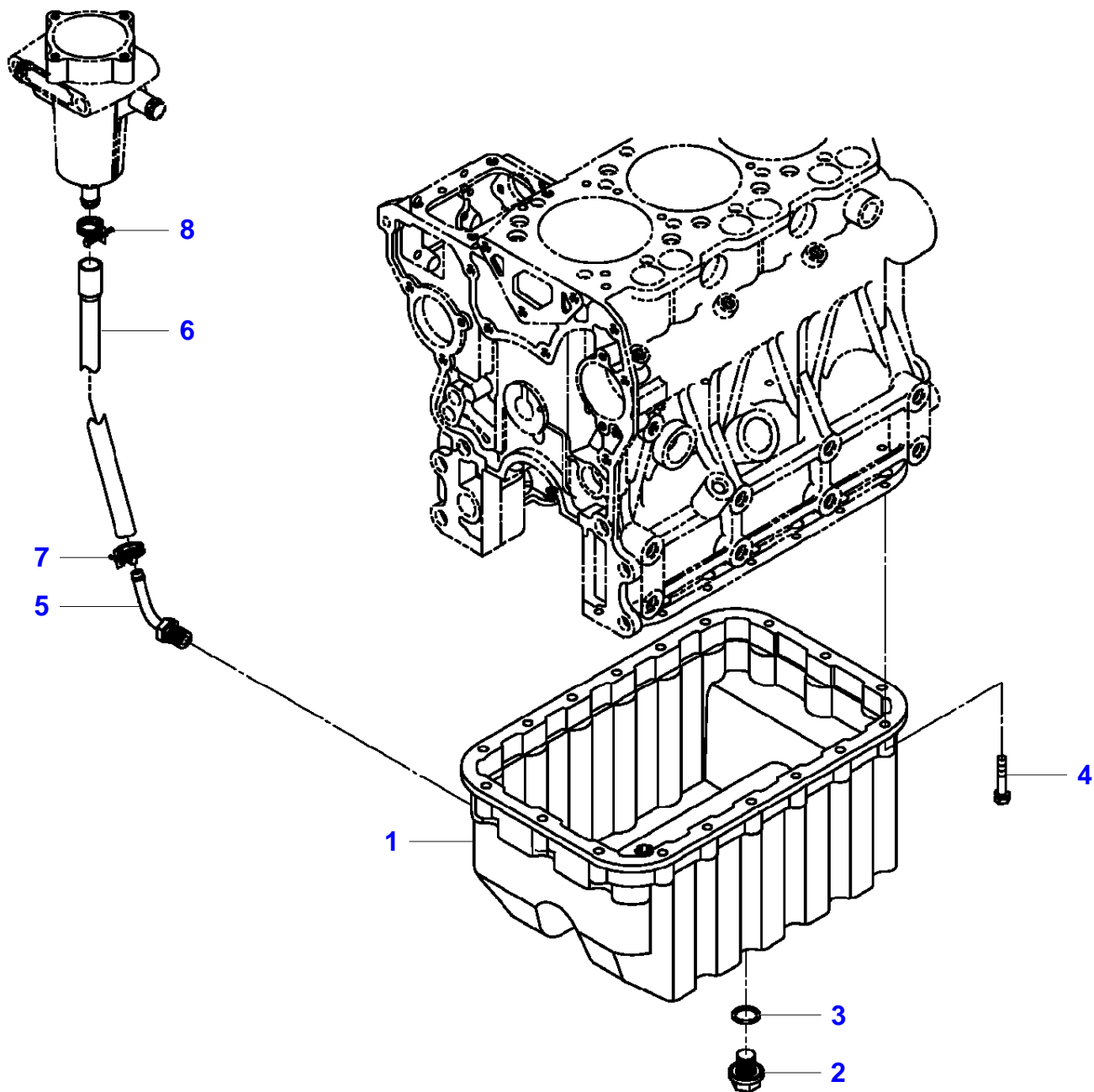
Item	Part Number	Qty	Description	Comments
1	6242407M2	1	Oil Level Indic.	
2	6242061M91	1	Guide	
3	6242122M91	1	Pipe	
4	3756982M1	1	Cap	
5	3756940M1	1	O Ring	
6	6242124M1	3	Pipe	
7	6242123M91	3	Eye Bolt	
8	6242093M1	3	Pin	
9	6242266M1	1	Adapter	
10	6242412M91	1	Breather	
11	6242413M91	1	Cover	(10)
12	3607106M1	1	Flange	(11)
13	3607109M1	1	Seat	(11)
14	6242411M1	1	Spring	(11)
15	3607110M1	1	Cover	(11)
16	3710529M1	4	Hex Socket Screw	(11)
17	3757056M1	1	Pipe,Water	(10)
18	6242414M1	1	Gasket	(10)
19	3710634M1	4	Bolt	(10)
20	6242416M91	1	Breather	(10)
21	4267576M1	2	Bolt	
22	6242264M1	1	Hose	
23	4262569M1	1	Cable Tie	Length 202 mm
24	3756936M1	1	Hose Clip	Diameter 13-18
25	3756937M1	1	Hose Clip	Diameter 16-20
26	6242408M1	1	Hose	
27	3755563M1	1	Hose Clip	Diameter 20-24

I-IS06-002-A



Item	Part Number	Qty	Description	Comments
1	3710574M91	1	Kit, Bearing	25
	3710577M91	1	Kit, Bearing	50
2	3710580M1	2	Bearing Thrust	(1)
3	4266964M1	3	Bearing	25
	4266969M1	3	Bearing	50

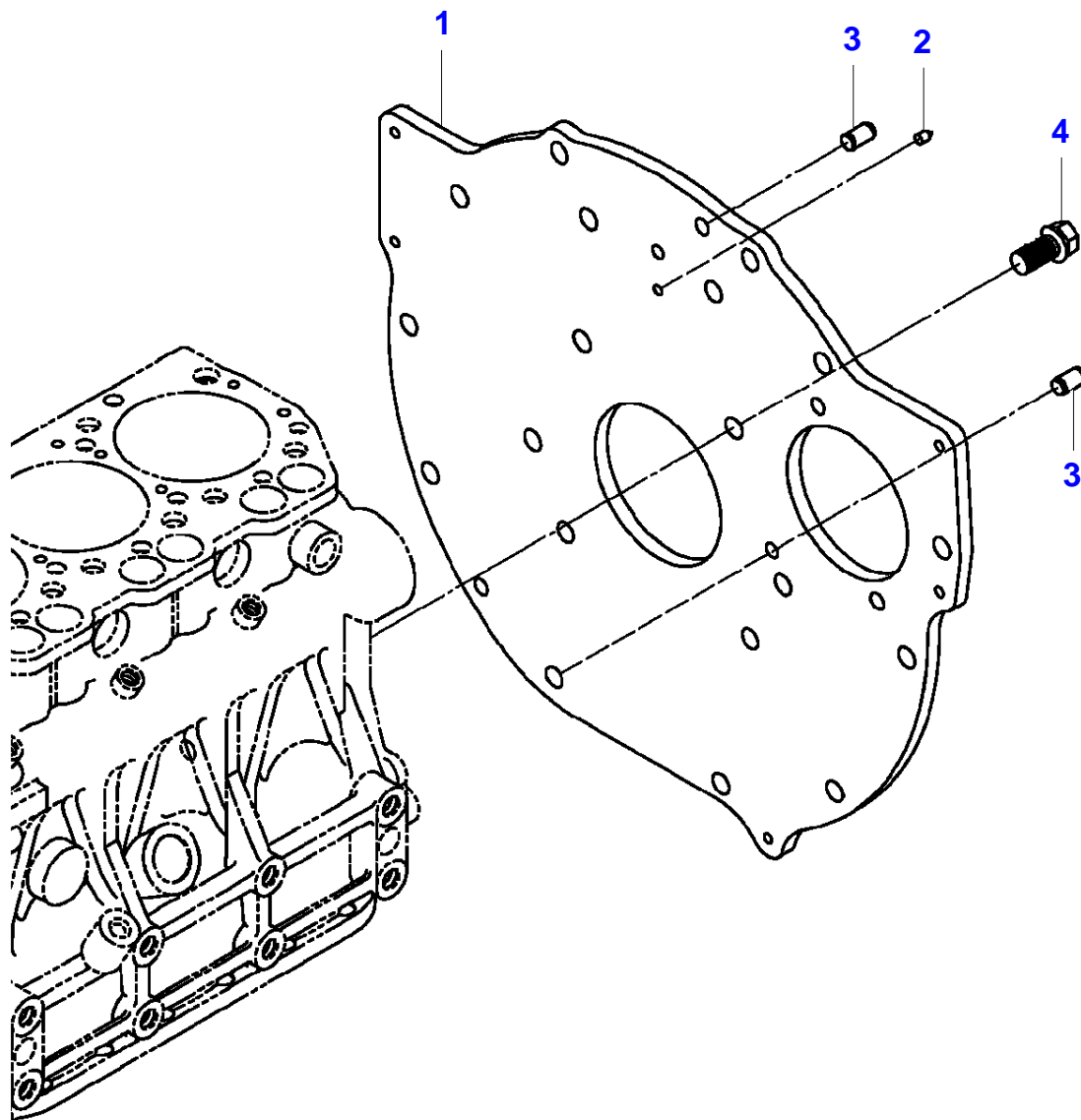
I-IS07-003-A



Engine - Oil Sump

Item	Part Number	Qty	Description	Comments
1	6242228M1	1	Oil Sump	
2	3607358M2	2	Plug	M14
3	3708620M1	2	O Ring	
4	3704335M1	18	Hex Screw	
5	3704191M1	1	Pipe	
6	6242262M1	1	Hose	
7	3755562M1	1	Hose Clip	Diameter 10-15
8	3756936M1	1	Hose Clip	Diameter 13-18

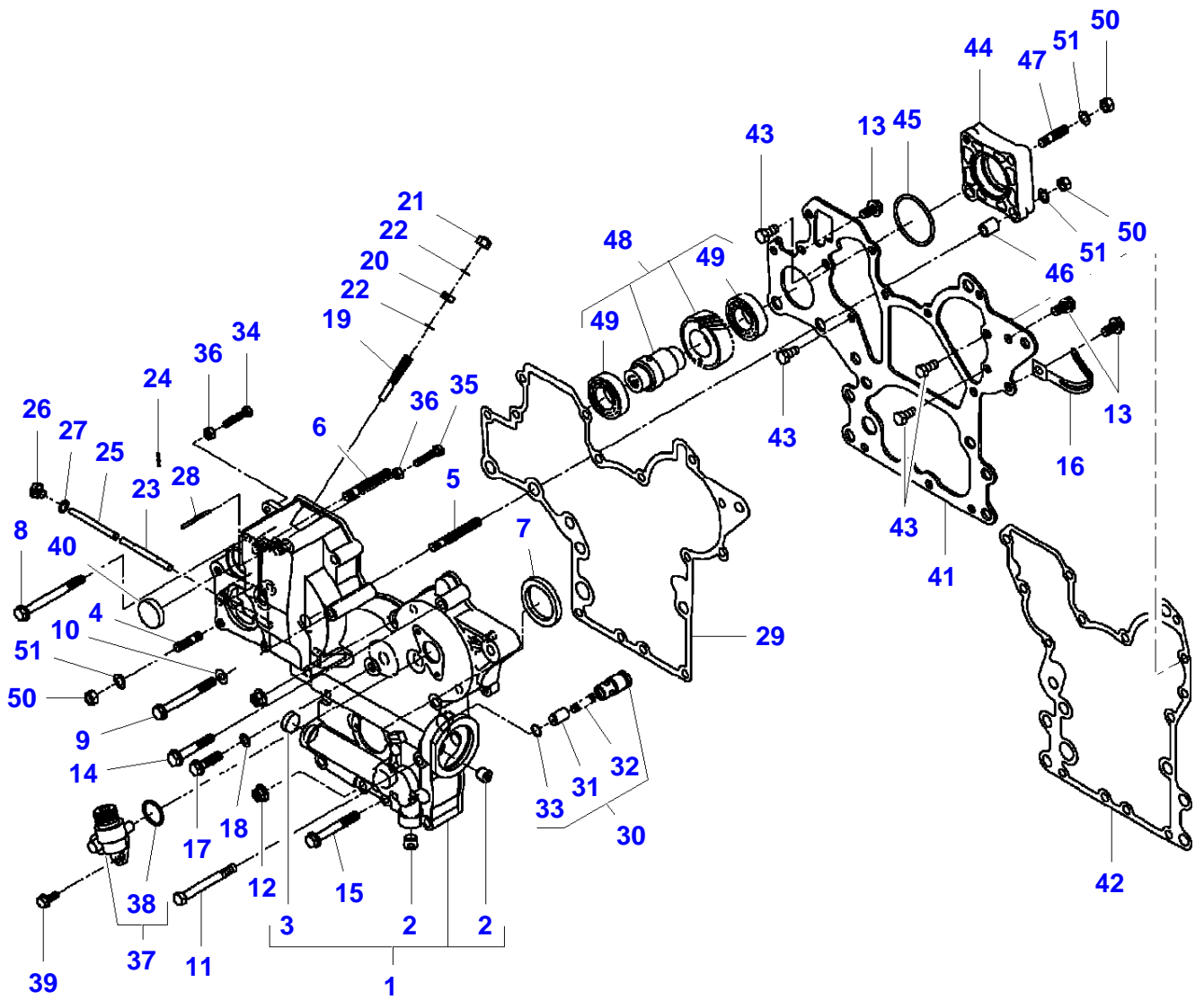
I-IK79-002-A



Item	Part Number	Qty	Description
1	6242103M1	1	Plate
2	3756977M1	1	Pointer
3	3757959M1	2	Pin
4	3710768M1	8	Hex Screw

MF 1540 COMPACT TRACTOR - 3906060
I-IS09-002-A

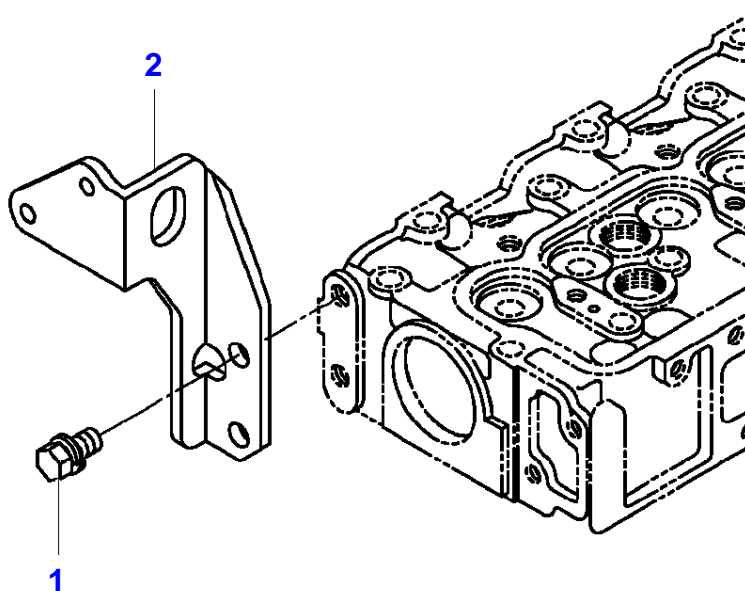
I-IS09-002-A



Engine - Timing Gear Housing

Item	Part Number	Qty	Description	Comments
1	4266009M91	1	Gear Case Assy.	
2	3710541M2	2	Plug	(1)
3	3710543M1	1	Cup	(1) Diameter 20 mm
4	3704353M1	4	Stud	
5	3704354M1	2	Stud	
6	3710484M1	1	Stud	
7	3710133M1	1	Oil Seal	
8	4267576M1	1	Bolt	
9	4267575M1	1	Bolt	
10	4265990M1	1	Washer	Diameter 8-16 X 1,2
11	3606214M1	1	Bolt	
12	4260467M1	2	Nut	M8
13	4267566M1	3	Bolt	
14	4267572M1	3	Bolt	
15	4267574M1	4	Bolt	
16	3756922M1	1	Clamp	
17	4267569M1	1	Bolt	
18	3756923M1	1	Washer	Diameter 8-14 X 1
19	3710404M2	1	Stop	
20	3710125M1	1	Nut	
21	3708581M1	1	Cap Nut	
22	3758721M1	2	Packing	
23	3710400M1	1	Pin	
24	3754238M1	2	Pin	
25	3710401M2	1	Pin	
26	4266261M1	1	Plug	
27	3756923M1	1	Washer	Diameter 8-14 X 1
28	3710135M1	1	Pin	
29	3710565M2	1	Gasket	
30	3605696M92	1	Pressure Valve	
31	3605697M2	1	Piston	(30)
32	3710279M1	1	Spring	(30)
33	3711702M1	1	Snapping	(30)
34	3710119M1	1	Bolt	
35	3710120M1	1	Bolt	
36	3710489M1	2	Nut	
37	3606142M92	1	Angle Trans.	
38	3708632M1	1	O Ring	
39	4267406M1	2	Bolt	
40	3710083M1	1	Blank Cover	Diameter 30 mm
41	3710564M3	1	Plate	
42	3710566M2	1	Gasket	
43	3710482M1	4	Bolt	
44	3710169M1	1	Spacer	
45	3708634M1	1	O Ring	
46	3710137M2	2	Pin	
47	3704353M1	1	Stud	
48	6242115M91	1	Shaft	
49	6242095M1	2	Bearing	(48)
50	3704361M1	8	Nut	
51	353446X1	8	Lock Washer	5/16"

I-IS10-002-A



Massey Ferguson

MF 1540 COMPACT TRACTOR - 3906060

3906060

Engine - Hanger

Page010-0060

Item	Part Number	Qty	Description
1	3704341M1	2	Hex Screw
2	6242347M1	1	Hanger



Suggest:

If the above button click is invalid.

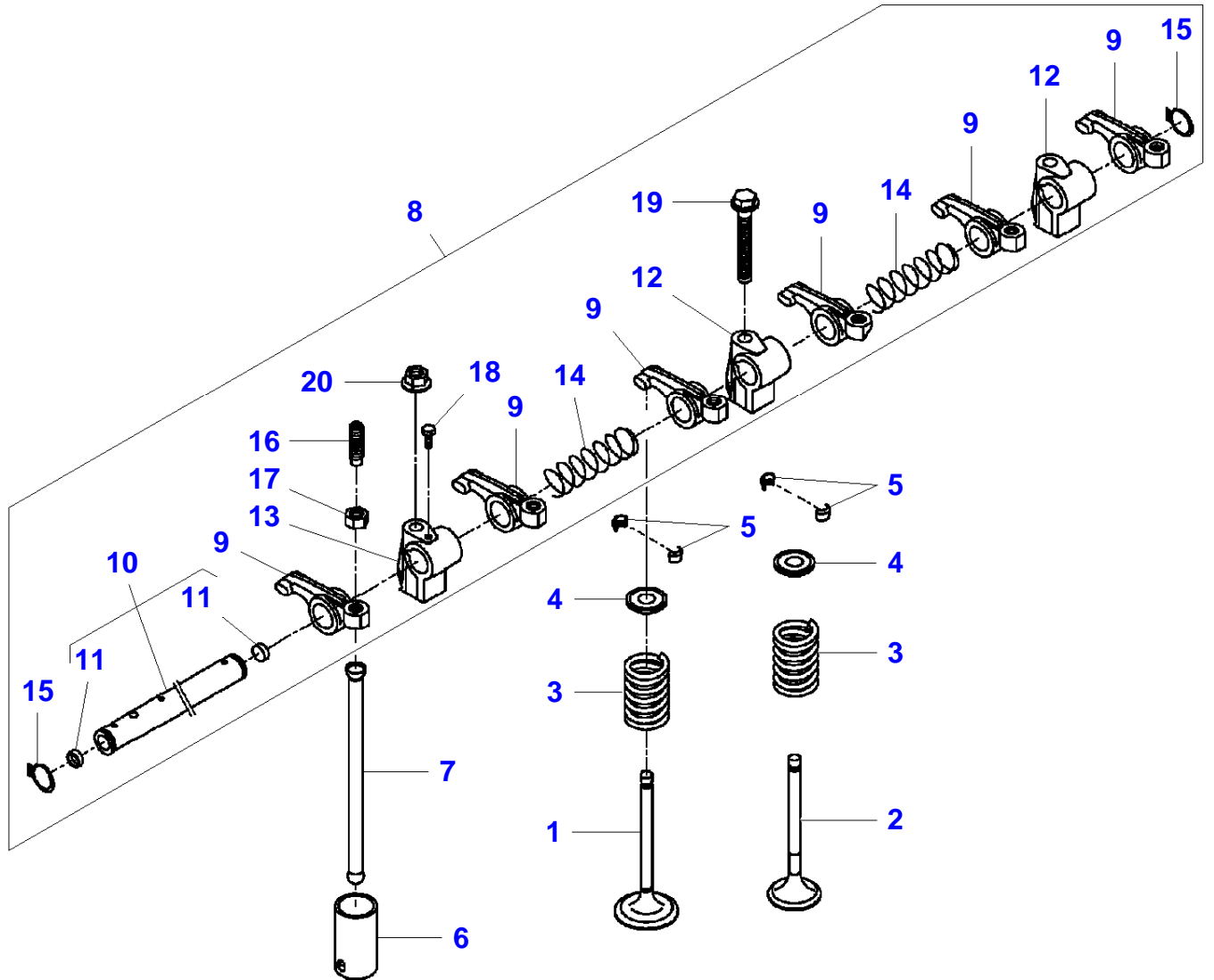
Please download this document

first, and then click the above link

to download the complete manual.

Thank you so much for reading

I-IS11-002-A



<https://www.ebooklibonline.com>

Hello dear friend!

Thank you very much for reading.

Enter the link into your browser.

The full manual is available for immediate download.

<https://www.ebooklibonline.com>