

Page Title	Page Number
ENGINE - A4.236 ENGINE- .	1
SHORT ENGINE- . - A4.236 ENGINE- .	2
CYLINDER BLOCK - A4.236 ENGINE- .	3
CRANKSHAFT, PISTONS AND CONNECTING RODS - A4.236 ENGINE- .	5
CYLINDER HEAD - A4.236 ENGINE- .	7
ROCKER SHAFT - A4.236 ENGINE- .	12
TIMING GEAR AND CAMSHAFT - A4.236 ENGINE- .	14
BALANCER UNIT - A4.236 ENGINE- .	16
FUEL INJECTION EQUIPMENT (DIESEL) - A4.236 ENGINE- .	18
LUBRICATING OIL SUMP - A4.236 ENGINE- .	20
LUBRICATING OIL FILTER AND INTEGRAL COOLER - A4.236 ENGINE- .	23
WATER PUMP, THERMOSTAT AND HEAT EXCHANGER - A4.236 ENGINE- .	24
LOW PRESSURE FUEL SYSTEM - A4.236 ENGINE- .	27
AIR INDUCTION AND EXHAUST SYSTEM - A4.236 ENGINE- .	29
ALTERNATOR POSITIONER - A4.236 ENGINE- .	30
JOINTS AND GASKETS - A4.236 ENGINE- .	31
HEATER - COLD CLIMATE	32
STAND - WITH SPACER	33
ALTERNATOR-LUCAS - LUCAS- .	34
ALTERNATOR - VALEO TYPE	36
ALTERNATOR - ISKRA TYPE- .	38
STARTER-LUCAS - UP TO SERIAL NUMBER R35158- .	40
STARTER MOTOR - MARELLI TYPE- .	42
STARTER MOTOR - BOSCH	44
STARTER MOTOR - ISKRA TYPE- .	45
COOLING SYSTEM-ENGINE - FAN AND HOSES	47
COOLING SYSTEM-ENGINE - FAN AND HOSES	48
EXHAUST SYSTEM-HORIZONTAL	49
EXHAUST SYSTEM-HORIZONTAL - TRATTRICE- H- .	51
EXHAUST SYSTEM-VERTICAL - TRATTRICE- H- .	52
EXHAUST SYSTEM-VERTICAL	53
AIR FILTER-DRY - DUAL ELEMENT - DRY AIR CLEANER- .	54
FUEL SYSTEM-FUEL TANK AND ATTACHMENTS	57
FUEL SYSTEM-FUEL FILTER	59
COOLING SYSTEM - TRATTRICE- H- .	61
COOLING SYSTEM - RADIATOR AND BRACKET- .	66
THROTTLE CONTROLS	70
INSTRUMENT PANEL AND INSTRUMENTS	72
INSTRUMENT PANEL AND INSTRUMENTS - TRATTRICE- H- .	76
INSTRUMENT PANEL AND INSTRUMENTS	79
INSTRUMENT PANEL AND INSTRUMENTS - TRATTRICE- H- .	80
ELECTRICAL WIRING	81
ELECTRICAL WIRING - TRATTRICE- H- .	86
ELECTRONIC HARNESS-INSTRUMENT PANEL	90
SENSORS HARNESS	91
LIGHTING EQUIPMENT-REAR	92
ELECTRICAL WIRING-TRACTOR CAB	93
LIGHTING EQUIPMENT-REAR - TRATTRICE- H- .	94
LIGHTING EQUIPMENT-REAR - TRATTRICE- H- .	95
LIGHTING EQUIPMENT-REAR - TRATTRICE- H- .	96
LIGHTING EQUIPMENT	97
LIGHTING EQUIPMENT - TRATTRICE- H- .	102
LIGHTING EQUIPMENT	105
BATTERY	106
CLUTCH-DUAL CLUTCH - LUK - 11- .	108
CLUTCH-DUAL CLUTCH - O.M.G. - 11- .	110
CLUTCH PEDAL AND LINKAGE	112
CENTRE AXLE HOUSING AND TRANSMISSION HOUSING	115
CENTRE AXLE HOUSING AND TRANSMISSION HOUSING	116
12 SPEED TRANSMISSION - STANDARD VERSION	118
12 SPEED TRANSMISSION - STANDARD VERSION	121
SHIFT LEVERS-12 SPEED TRANSMISSION	124
SHIFT LEVERS-12 SPEED TRANSMISSION	126
GEAR BOX - FOR SHUTTLE VERSION ONLY.	128
REDUCER - FOR SHUTTLE VERSION ONLY.	129
REDUCER CONTROL - OVERDRIVE AND SHUTTLE VERSION	132

TABLE OF CONTENT

REDUCER - OVERDRIVE AND SHUTTLE VERSION	134
REDUCER CONTROL - OVERDRIVE AND UNDERDRIVE VERSION	138
REDUCER - OVERDRIVE AND UNDERDRIVE VERSION	140
REDUCER CONTROL - OVERDRIVE AND CREEPER VERSION	144
REDUCER - OVERDRIVE AND CREEPER VERSION	146
REDUCER CONTROL - UNDERDRIVE AND SHUTTLE VERSION	149
REDUCER - UNDERDRIVE AND SHUTTLE VERSION	150
REDUCER CONTROL - UNDERDRIVE E CREEPER VERSION	154
REDUCER - UNDERDRIVE E CREEPER VERSION	155
REDUCER CONTROL - SHUTTLE AND CREEPER VERSION	158
REDUCER - SHUTTLE AND CREEPER VERSION	159
PTO SHAFT - 540 R.P.M.- .	162
PTO SHAFT - 540 R.P.M.- .	164
PTO SHAFT - 540/750/1000 R.P.M.- .	166
PTO SHAFT - 540/750/1000 R.P.M.- .	169
PTO-CONTROL - 540 R.P.M.- .	171
PTO-CONTROL - 540/750/1000 R.P.M.- .	172
TRANSFER GEAR BOX-4 WHEEL DRIVE	174
4 WHEEL DRIVE CONTROLS	176
REAR AXLE-DIFFERENTIAL	177
REAR AXLE-DIFFERENTIAL - TRATTRICE- H- .	179
REAR AXLE-HOUSING	181
REAR AXLE-HOUSING - TRATTRICE- H- .	185
REAR AXLE-DIFFERENTIAL LOCK MECHANISM - MECHANICAL CONTROL- .	188
BRAKE AND CONTROLS	189
BRAKE AND CONTROLS	191
BRAKE AND CONTROLS - TRATTRICE- H- .	193
BRAKES-HANDBRAKE	195
BRAKE CYLINDER	197
BRAKES-MASTER CYLINDER	199
REAR WHEELS	200
FRONT WHEELS	203
FRONT WHEELS - TRATTRICE- H- .	207
FRONT AXLE 2 WHEEL DRIVE-AXLE SUPPORT	208
FRONT AXLE 4 WHEEL DRIVE-DIFFERENTIAL	211
FRONT AXLE 4 WHEEL DRIVE-DIFFERENTIAL	214
FRONT AXLE 4 WHEEL DRIVE-FINAL DRIVE	216
FRONT AXLE 4 WHEEL DRIVE-DIFFERENTIAL	218
FRONT AXLE 4 WHEEL DRIVE-DIFFERENTIAL	221
FRONT AXLE 4 WHEEL DRIVE-FINAL DRIVE	224
FRONT AXLE 4 WHEEL DRIVE-DIFFERENTIAL - TRATTRICE- H- .	227
FRONT AXLE 4 WHEEL DRIVE-DIFFERENTIAL - TRATTRICE- H- .	230
FRONT AXLE 4 WHEEL DRIVE-FINAL DRIVE - TRATTRICE- H- .	233
STEERING ORBITROL UNIT - 2 WHEEL DRIVE	236
STEERING ORBITROL UNIT - 4 WHEELS DRIVE	238
STEERING HYDRAULIC LINES	240
STEERING HYDRAULIC LINES - TRATTRICE- H- .	243
STEERING HYDRAULIC LINES	245
STEERING HYDRAULIC LINES - TRATTRICE- H- .	248
STEERING CYLINDER-4 WHEEL DRIVE	250
STEERING CYLINDER-4 WHEEL DRIVE	251
STEERING CYLINDER-4 WHEEL DRIVE - TRATTRICE- H- .	252
STEERING CYLINDER-2 WHEEL DRIVE	253
STEERING-STEERING PUMP - UP TO SERIAL NUMBER R31000- .	255
STEERING-STEERING PUMP - FROM SERIAL NO- R31001.	256
HYDRAULIC LIFT PIPINGS - STANDARD VERSION	257
HYDRAULIC LIFT PIPINGS	260
HYDRAULIC LIFT PIPINGS - SINGLE HYDRAULIC LINES	263
HYDRAULIC PUMP - BOSCH	265
HYDRAULIC PUMP - TUROLLA	266
HYDRAULIC PUMP - BOSCH	267
HYDRAULIC PUMP - TUROLLA	269
HYDRAULIC LIFT VALVE	270
HYDRAULIC LIFT-LIFT ARMS	272
HYDRAULIC LIFT-LIFT ARMS	274
REAR CONTROLS-DRAFT AND POSITION	276
REAR CONTROLS-DRAFT AND POSITION	279
REAR CONTROLS-DRAFT AND POSITION - TRATTRICE- H- .	281

TABLE OF CONTENT

HYDRAULIC LIFT CYLINDER - HYDRAULIC LIFT CYLINDER,WITH 1'AND 2'AUXIL.HYDRAUL .VAL	283
HYDRAULIC LIFT CYLINDER - HYDRAULIC LIFT CYLINDER,WITH 1'AND 2'AUXIL.HYDRAUL .VAL	285
AUXILIARY HYDRAULIC VALVE LINES - TILL TYPE	287
AUXILIARY HYDRAULIC VALVE LINES - TILL TYPE	290
AUXILIARY HYDRAULIC VALVE LINES - WITH AUXILIARY HYDRAULIC VALVE CLEARANCE- .	293
AUXILIARY HYDRAULIC VALVE LINES - WITH AUXILIARY HYDRAULIC VALVE CLEARANCE- .	294
AUXILIARY HYDRAULIC VALVE LINES - WITH AUXILIARY HYDRAULIC VALVE CLEARANCE- .	295
AUXILIARY HYDRAULIC VALVE LINES - WITH AUXILIARY HYDRAULIC VALVE CLEARANCE- .	298
AUXILIARY HYDRAULICS VALVE - TILL TYPE STANDARD- .	301
AUXILIARY HYDRAULICS VALVE - TILL TYPE FLOATING- .	303
AUXILIARY HYDRAULIC VALVE LINES- HIDROIRMA - HIDROIRMA TYPE FROM SERIAL N.B08001- .	305
AUXILIARY HYDRAULIC VALVE LINES- HIDROIRMA - HIDROIRMA TYPE FROM SERIAL N.B08001- .	307
AUXILIARY HYDRAULIC VALVE LINES- HIDROIRMA - HIDROIRMA TYPE FROM SERIAL N.B08001- .	308
LINKAGETOP LINK - HIDROIRMA TYPE FROM SERIAL N.B08001- .	310
PLATFORM AUTOMATIC HITCHWITH REMOTE CONTROL - HIDROIRMA TYPE FROM SERIAL N.B08001- .	311
CONTROL VALVE-VALVE - HIDROIRMA TYPE FROM SERIAL N.B08001- .	312
ACCESSORIES HYDRAULIC - ADDITIONAL POWER OUTLET UNIT	313
LINKAGE CAT 2 - UP TP SERIAL NUMBER- .	314
LINKAGE CAT 2 - UP TP SERIAL NUMBER- .	317
LINKAGE CAT 2	320
LINKAGE CAT 2 - TRATTRICE- H- .	323
LINKAGE CAT 2	326
LINKAGE-LINK END	329
SHEET METAL-GRILLE	330
SHEET METAL-HOOD	331
SHEET METAL-PANELS	333
DECALS	334
DECALS	337
DECALS	341
FENDERS - FRONT - 2WHEEL DRIVE	343
FENDERS - FRONT - 4 WHEEL DRIVE	344
FENDERS AND PLATFORM	346
FENDERS AND PLATFORM - TRATTRICE- H- .	351
FENDERS AND PLATFORM - TRATTRICE- H- .	353
SAFETY FRAME	355
SAFETY FRAME	356
ROTATING LIGHT	357
SEAT-GRAMMER	359
TRACTOR CAB-FRAME	362
TRACTOR CAB-ROOF	365
TRACTOR CAB-CAB DOOR	368
TRACTOR CAB-WINDOWS - FRONT- .	370
TRACTOR CAB-WINDOWS - REAR	372
TRACTOR CAB-CAB INSULATION	375
TRACTOR CAB-CAB INSULATION	376
TRACTOR CAB-ELECTRICAL EQUIPMENT	378
TRACTOR CAB-CAB INSULATION	379
TRACTOR CAB-AIR CONDITIONER - FROM SERIAL NO R 34153.	381
TRACTOR CAB-AIR CONDITIONER - FROM SERIAL NO R 34153.	384
TRAILER BRAKES-PIPES AND FITTINGS	385
WEIGHT FRAME AND WEIGHTS	387
REAR HOOK-ADJUSTABLE	388
DRAWBAR	389
DRAWBAR	390
REAR HOOK-ADJUSTABLE - STANDARD	391
TOOL KIT	392

**<https://www.ebooklibonline.com>**

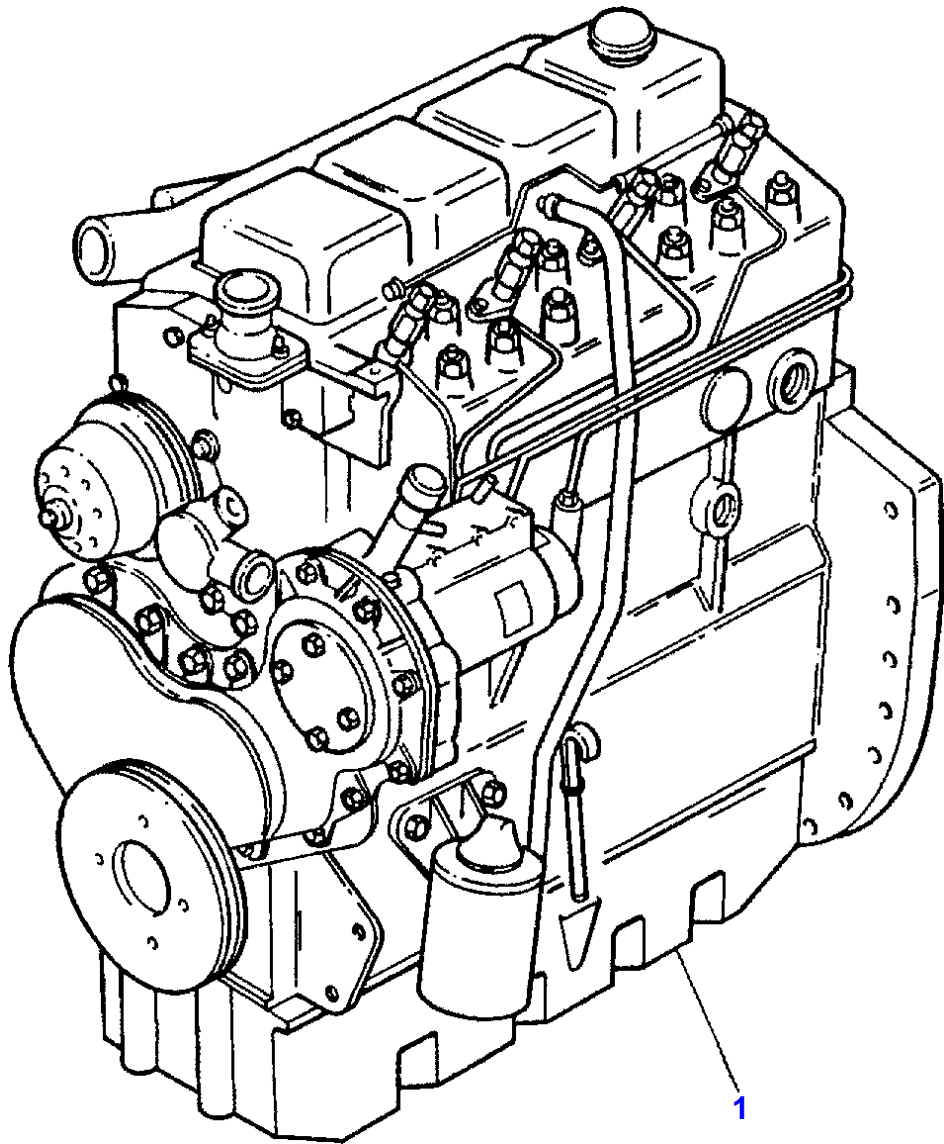
Hello dear friend!

Thank you very much for reading.

Enter the link into your browser.

The full manual is available for immediate download.

**<https://www.ebooklibonline.com>**



MASSEY FERGUSON

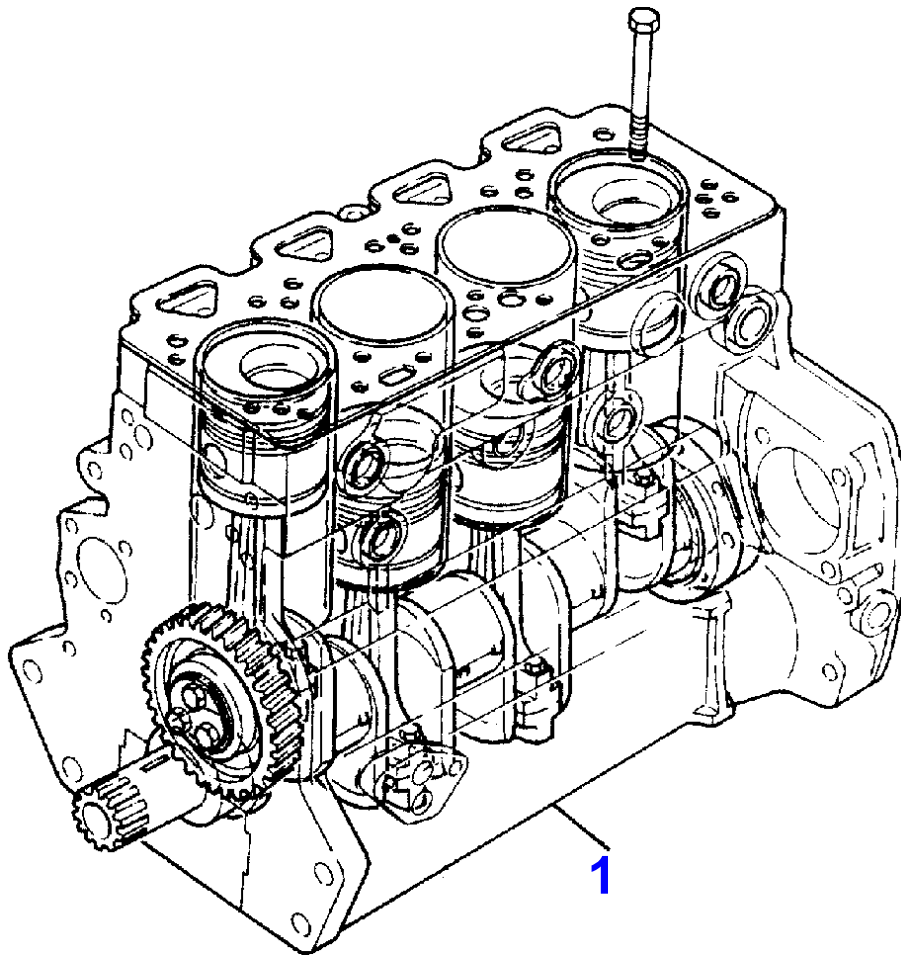
MF 374 F - H TRACTOR, ->| 30/09/93 - 3311557

3311557

ENGINE - A4.236 ENGINE- .

1

Item	Part Number	Qty	Description	Comments
				A4.236 ENGINE- .
1	3553131M91	1	Engine	Repairs and replaces LD31202



MASSEY FERGUSON

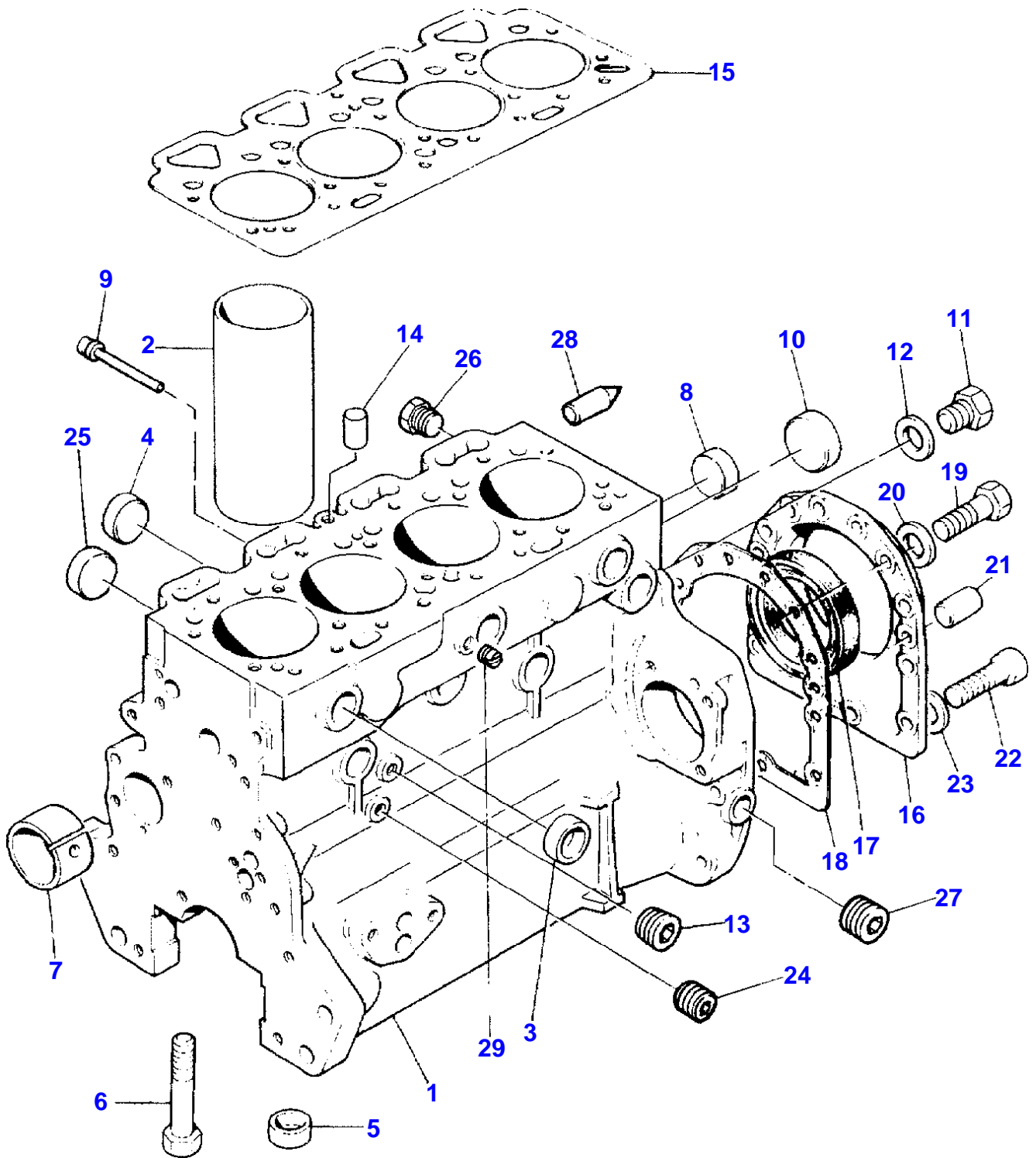
MF 374 F - H TRACTOR, ->| 30/09/93 - 3311557

3311557

SHORT ENGINE- . - A4.236 ENGINE- .

2

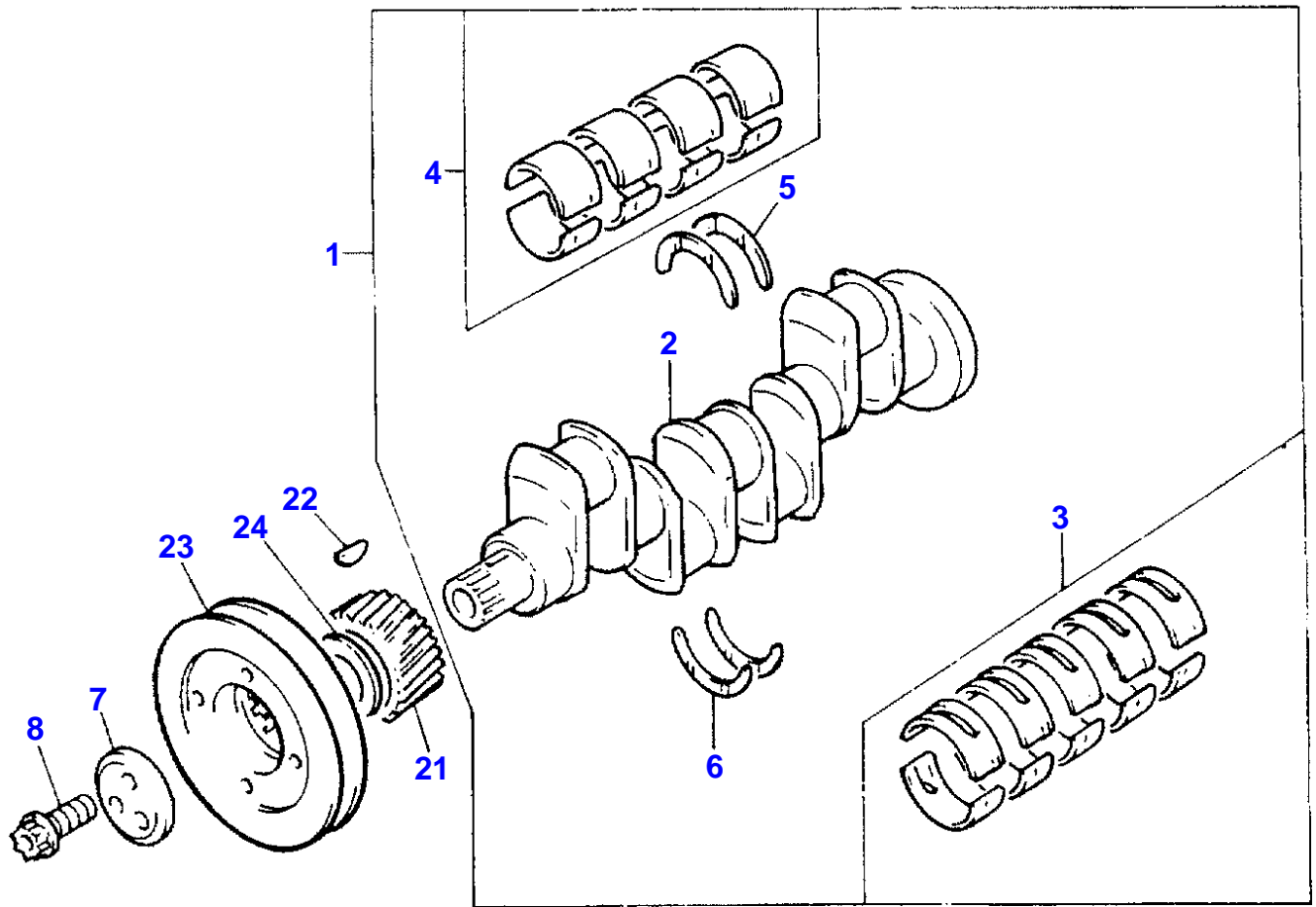
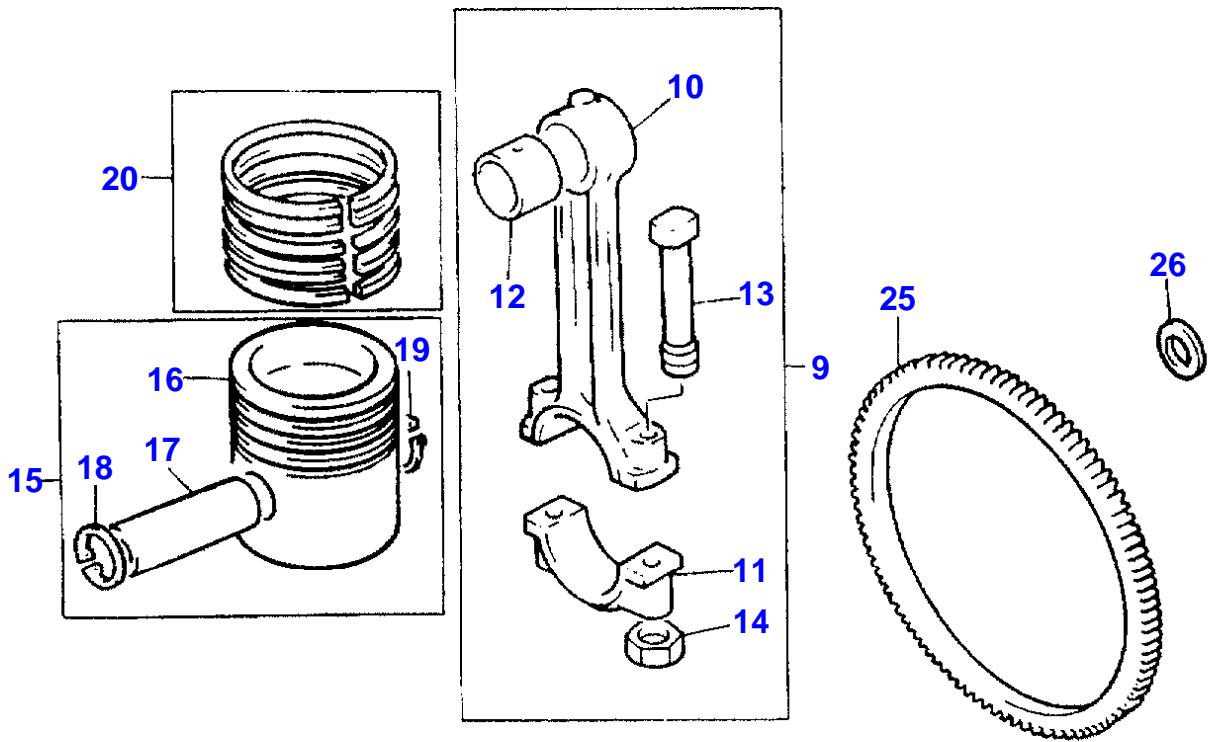
Item	Part Number	Qty	Description	Comments
				A4.236 ENGINE- .
1	LD39336	1	Engine	Repairs and replaces LD 39303
2		1	Housing	(1)
				(A)
2		4	Liner	(1)
		1		(1)
2		4	Piston	(1)
		4		(1)
2		4	Conrod	(1)
		10		(1)
2		8		(1)
2		4	Washer	(1)
		1		(1)
		1	Housing	(1)
		22	Bolt	(1)
		1		(1)
				(A)
				COMPLETE WITH PLUGS



Item	Part Number	Qty	Description	Comments
				A4.236 ENGINE- .
1	ZZ 50145	1	Cylinder Block	Repairs and replaces ZZ50110 Repairs and replaces ZZ50114
2	3135X031	4	Liner	(1)
2	3135X032	X	Liner	(A)
3	0650710	6	Plug	(B)
				(1)
				Repairs and replaces 0650563
4	32418122	4	Plug	(1)
5	33142111	10	Sleeve	(1)
6	32166329	10	Screw	(1)
7	31134164	1	Bush	(1)
				Repairs and replaces 31134163
				Repairs and replaces 31134132
8	0650710	2	Plug	(1)
				Repairs and replaces 0650563
9	2485A204	1	Plug	(1)
10	32416105	1	Plug	(1)
11	32168212	1	Plug	(1)
				Repairs and replaces 0650582
12	3311R003	1	Washer	(1)
				Repairs and replaces 0920130
13	0650588	2	Plug	(1)
14	32417134	1	Plug	
15	3681E018	1		Repairs and replaces 36812352
16	4142V066	1	Flange	Repairs and replaces 4142V064 Repairs and replaces 4142V061
17	2418F475	1		(16)
18	3681T009	1		
19	0746211	12	Screw	
20	390972X1	12	Washer	
21	0350009	2	Dowel	
22	2172530	2	Screw	
23	33112111	2	Washer	
24	0650594	1	Plug	Repairs and replaces 2431131
25	0650577	4	Plug	
26	32161114	2	Plug	
27	0650588	1	Plug	
28	32452113	1	Pin	
29	32114143	1	Plug	Repairs and replaces 32114116

(A)  
PRESS FIT

(B)  
SLIP FIT



Item	Part Number	Qty	Description	Comments
				A4.236 ENGINE- .
1	ZZ 90081	1	Shaft	Repairs and replaces U5BG0024
2		1	Shaft	(1) Not serviced, order REF.1
3	81558	1	Bearing	(1) (A)
3	81558A	X	Bearing	(A) Thickness (-)0.25MM Thickness (-)0.010
3	81558B	X	Kit	(A) Thickness (-)0.50MM Thickness (-)0.020
3	81558C	X	Bearing	(A) Thickness (-)0.75MM Thickness (-)0.030
4	85042	1	Kit	(1) (A)
4	85042A	X	Kit	(A) Thickness (-)0.25MM Thickness (-)0.010
4	85042B	X	Kit	(A) Thickness (-)0.50MM Thickness (-)0.020
4	85042C	X	Kit	(A) Thickness (-)0.75MM Thickness (-)0.030
5	31137551	2	Washer	(1)
	31137312	X	Ring	Thickness (+)0.19MM Thickness (+)0.0075
6	31137561	2	Washer	(1)
	31137322	X	Ring	Thickness (+)0.19MM Thickness (+)0.0075
7	3242T001	1	Ring	(D)
8	32186139	3	Screw	(D)
9	ZZ 90009	4	Conrod	Repairs and replaces M7BJ0015
10		1	Conrod	(9) Not serviced, order REF.9
11		1	Support	(9) Not serviced, order REF.9
12	31134123	1	Thimble	(9)
13	32762144	1	Screw	(9)
14	33221328	1	Nut	(9)
15	U5LU0025	4	Piston	(B)
	U5LP0035	4	Piston	(C)
16		1	Piston	(15) Not serviced, order REF.15
17		1	Pin	(15) Not serviced, order REF.15
18	0170002	1	Ring	(15)
19	0170002	1	Ring	(15)
20	41158041	4	Kit	
21	31171681	1	Gear	Number of teeth/spines 28
22	0500012	1	Key	
23	31148798	1	Pulley	Repairs and replaces 31148797
24	33125416	1	Washer	(E)
25	3552228M1	1	Crownwheel	Number of teeth/spines 115
26	33117127	6	Washer	Repairs and replaces 33117121  (A) PRE-FINISHED  (B) UNTOPPED  (C) PRE-TOPPED  (D)

MASSEY FERGUSON

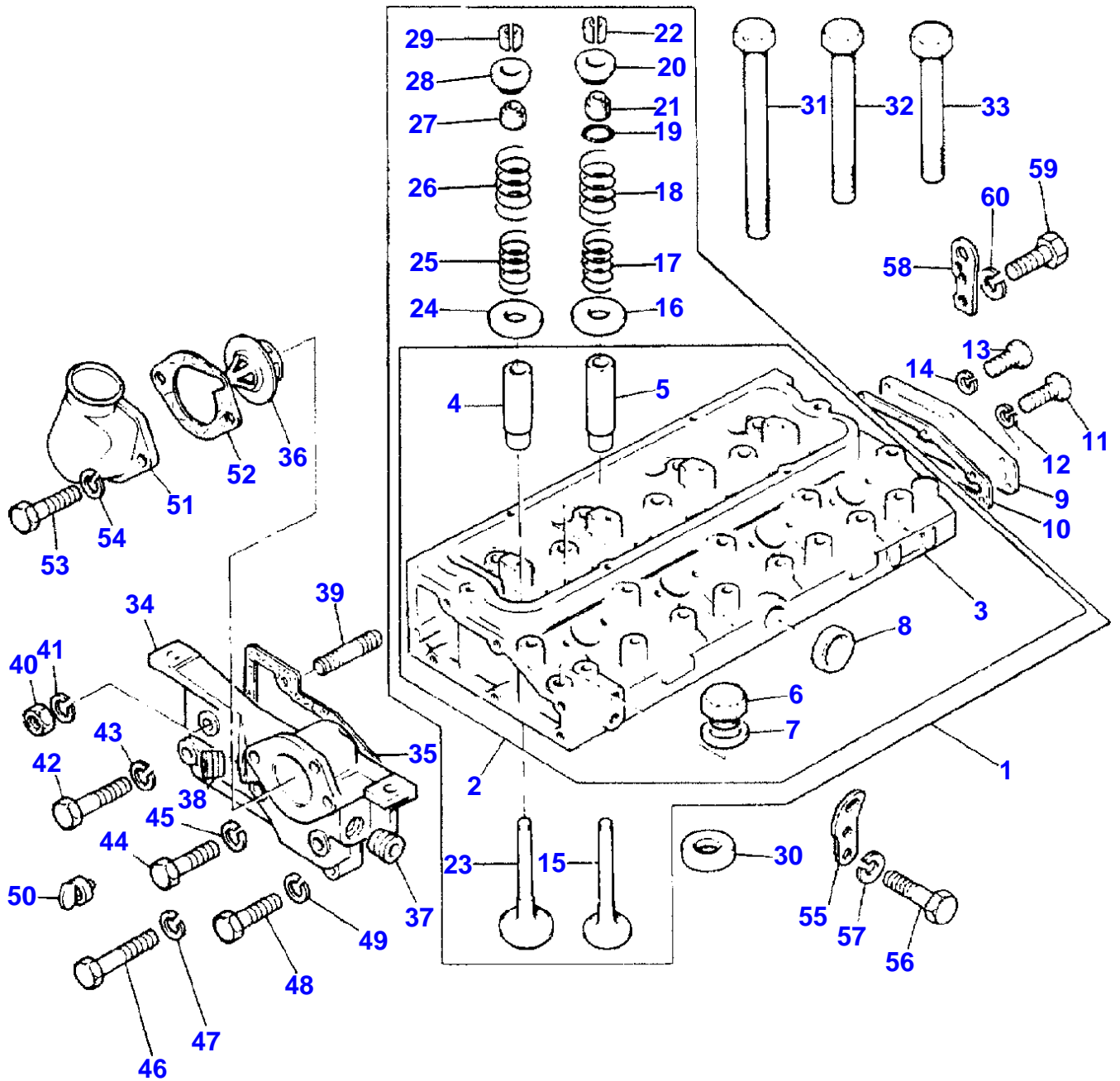
MF 374 F - H TRACTOR, ->| 30/09/93 - 3311557

3311557

CRANKSHAFT, PISTONS AND CONNECTING RODS - A4.236 ENGINE- .

5

Item	Part Number	Qty	Description	Comments
				NOT SUPPLIED WITH ASSEMBLY
				(E)
				USED ONLY WITH 31148797



Item	Part Number	Qty	Description	Comments
				A4.236 ENGINE- .
1	ZZ 80175	1	Cylinder Head	Repairs and replaces ZZ80072
				Repairs and replaces ZZ80062
2	ZZ 80176	1	Cylinder Head	Repairs and replaces ZZ80015 (1)
				(F)
				Repairs and replaces ZZ80157
				Repairs and replaces ZZ80061
				Repairs and replaces ZZ80004 (2)
3		1	Cylinder Head	(2)
				Not serviced, order REF.2
4	3343F002	4	Guide	(2)
				(C)
5	3343J002	4	Guide	(2)
				(C)
6	0650203	1	Plug	(2)
7	2411157	1	Washer	(2)
8	0650710	1	Plug	(2)
9	3623K007	1	Plate	
10	3685R004	1		
11	0746452	2	Screw	
12	0920054	2	Lock Washer	
13	2183205	4	Screw	Repairs and replaces 0746254
14	0920053	4	Washer	
15	31431881	4	Valve	(D,G)
				Alternative 31431886
15	3142A052	4	Valve	(1)
				(C,H)
15	31431882	X	Valve	(B,G)
				Thickness (+) 0,003
15	3142A053	X	Valve	(B,H)
				Thickness (+) 0.003
15	31431883	X	Valve	(B,G)
				Thickness (+) 0,015
15	3142A054	X	Valve	(B,H)
				Thickness (+) 0,015
15	31431884	X	Valve	(B,G)
				Thickness (+) 0,030
15	3142A055	X	Valve	(B,H)
				Thickness (+) 0,030
16	33415118	4	Washer	(1)
17	31744131	4	Spring	(1)
				(J)
17	31744133	4	Spring	(1)
				(K)
18	31745121	4	Spring	(1)
				(J)
18	31745122	4	Spring	(1)
				(K)
19	2415B201	4	Ring	(1)
				(J)
20	33423147	4	Cover	(1)
				(J)
20	33424107	4	Cover	(1)
				(K)
21	33817117	4		(1)
22	33173108	8	Cotter	(1)
				(A)
23	31431641	4	Valve	(1)
				(D)
23	31431315	4	Valve	(1)
				(E)
23	31431401	X	Valve	(B,D)
				Thickness (+) 0.003
23	31431316	X	Valve	(B,E)

Item	Part Number	Qty	Description	Comments
23	31431402	X	Valve	Thickness (+) 0,003 (B,D)
23	31431317	X	Valve	Thickness (+) 0,015 (B,E)
23	31431403	X	Valve	Thickness (+) 0,015 (B,D)
23	31431318	X	Valve	Thickness (+) 0,030 (B,E)
24	33415118	4	Washer	Thickness (+) 0,030 (1)
25	31744131	4	Spring	(1)
25	31744133	4	Spring	(J) (1)
26	31745121	4	Spring	(K) (1)
26	31745122	4	Spring	(J) (1)
27	33817117	4		(K) (1)
28	33423147	4	Cover	(1)
28	33424107	4	Cover	(J) (1)
29	33173108	8	Cotter	(K) (1)
30	33152153	4	Cap	(A) (1)
31	32166337	2	Screw	
32	32166338	12	Screw	
33	32166339	8	Screw	
34	37762705	1	Box	Repairs and replaces 37762706
34	3545576M1	1	Body	(B)
35	36853514	1		
36	2485659	1	Thermostat	
37	2431154	1	Plug	
38	2431154	1	Plug	
39	2217202	1	Stud	
40	2188135	1	Nut	
41	0920054	1	Lock Washer	
42	0096238	1	Screw	
43	0920053	1	Washer	
44	0096439	1	Screw	
45	0920054	1	Lock Washer	
46	2183205	2	Screw	
47	0920053	2	Washer	
48	0096434	2	Screw	
49	0920054	2	Lock Washer	
50	2485791	1	Valve	
51		1	Manifold	(I)
52	36862225	1		
53	0096433	2	Screw	
54	0920054	2	Lock Washer	
55	3648C004	1	Plate	
56	353537X1	2	Screw	
57	0920054	2	Lock Washer	
58	36177111	1	Base Plate	
59	353537X1	2	Screw	
60	0920054	2	Lock Washer	

(A)  
SERVICED IN PAIRS

(B)  
WITH CONDITIONED AIR

(C)  
REMOVE AND FIT 31431881

(D)  
FITTED IN PLACE OF EXHAUST VALVES SUPPLIED WITH CY LINDER HEAD ASSEMBLY

Item	Part Number	Qty	Description	Comments
------	-------------	-----	-------------	----------

(E)  
USED ONLY WITH ZZ80062/ZZ80072 (CYLINDER HEAD)

(F)  
MINOR ASSEMBLY

(G)  
USED ONLY WITH ZZ80015/ZZ80072 ..

(H)  
USED ONLY WITH ZZ80062

(I)  
NOT SUPPLIED BY PERKINS ENGINES LIMITED.

(J)  
USED ONLY WITH ZZ80015/ZZ80062

(K)  
USED ONLY WITH ZZ80072



Item	Part Number	Qty	Description	Comments
				A4.236 ENGINE- .
1	ZZ 90007	1	Shaft	Repairs and replaces ZZ90030
2	ZZ 90032	1	Shaft	(1)
3		1	Shaft	(2)
				Not serviced, order REF.2
4	0650507	2	Plug	(2)
5	3818X901	4	Poppet	(1)
				Repairs and replaces 37521334
6	41151484	4	Lever	(1)
				Right Hand
7	41151483	4	Lever	(1)
				Left Hand
				Repairs and replaces 37371271
8	31744123	2	Spring	(1)
9	31743108	2	Spring	(1)
10	3775E012	1	Union	(1)
				(A)
11	2231236	1	Screw	(B)
	2233022	1	Screw	(1)
				(C)
12	33117426	2	Shim	(1)
13	0170151	2	Ring	(1)
14	33117434	2	Lock Washer	(1)
15	0720579	8	Screw	(1)
16	0576052	8	Nut	(1)
17	31434163	8	Tappet	
18	31434307	8	Rod	
19	33811113	1	Ring	
20	0096634	4	Screw	
21	0920006	4	Washer	
22	37188141	1	Cover	
23	3681A026	1		Repairs and replaces 36811132
24	2172513	4	Screw	
25	0920002	4	Washer	
26	0920052	4	Washer	
27	2487845	1	Plug	
28		1	Plug	(27)
				Not serviced, order REF.27
29	24870002	1		(27)
30	33872516	1	Pipe	
31	21825195	1	Clamp	Repairs and replaces 0180063
32	35731144	1	Pipe	
33	0096215	1	Screw	Up to Serial or Engine Number U226708S
	2187333	1	Screw	From Serial or Engine Number U226709S
34	0920003	1	Washer	Up to Serial or Engine Number U226708S
35	0920053	1	Washer	Up to Serial or Engine Number U226708S
				(A)
				WAS 3775E011 USE 3775E012/2233022.
				(B)
				USED ONLY WITH 3775E011
				(C)
				USED ONLY WITH 3775E012



MASSEY FERGUSON

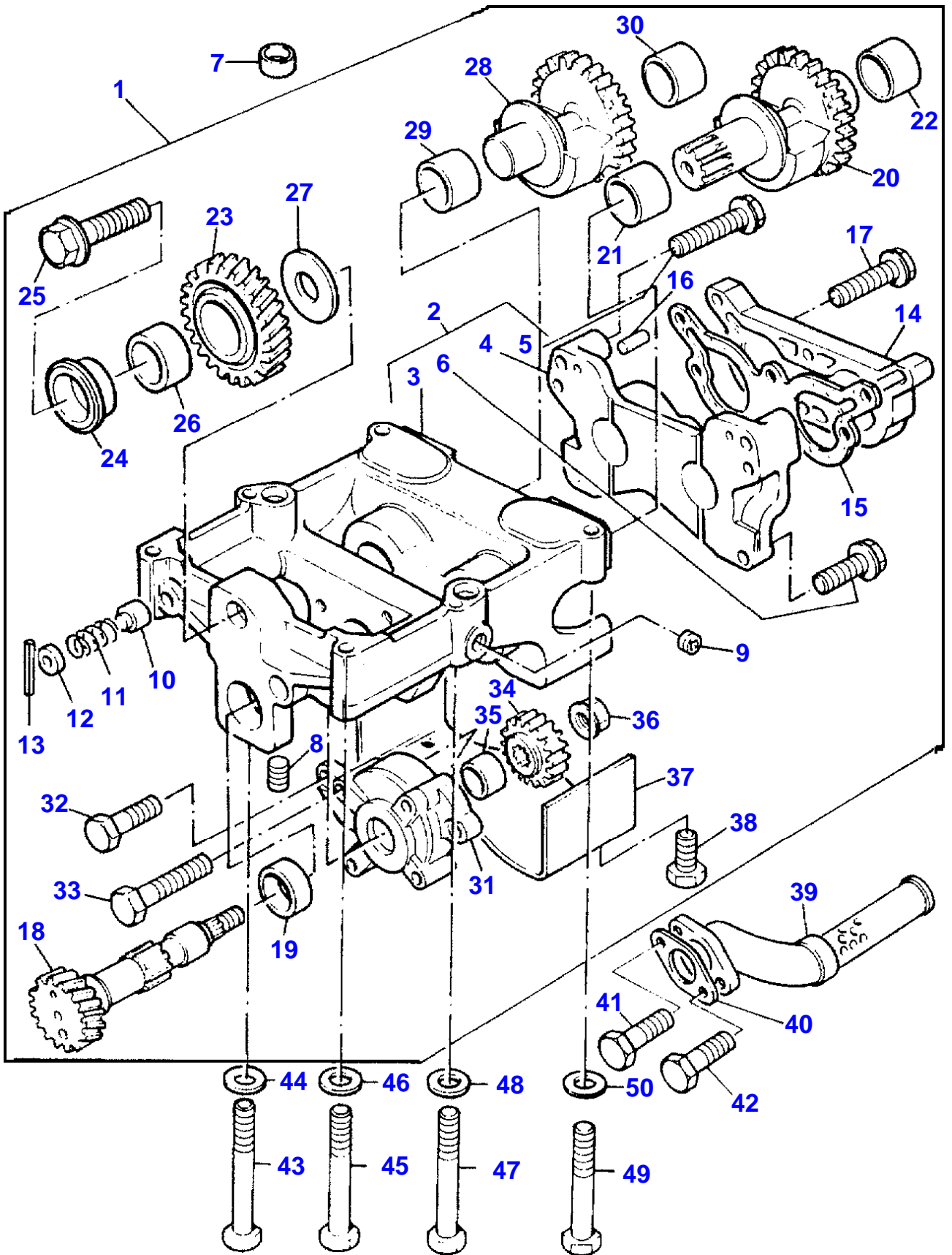
MF 374 F - H TRACTOR, ->| 30/09/93 - 3311557

3311557

TIMING GEAR AND CAMSHAFT - A4.236 ENGINE- .

14

Item	Part Number	Qty	Description	Comments
				A4.236 ENGINE- .
1	37161642	1	Body	
2	36814137	1		
3	2183205	8	Screw	
4	0920053	8	Washer	
5	0746211	1	Screw	
6	0920053	1	Washer	
7	33426161	1	Collar	
8	41115023	1	Gear	Number of teeth/spines 63
9	0050345	2	Thimble	(8)
10	0941082	1	Plate	
11	2184634	3	Screw	
12	31415374	1	Camshaft	
13	33153121	1	Washer	
14	2116053	1	Pin	
15	3117L011	1	Gear	Number of teeth/spines 56
16	0500012	1	Key	
17	37166401	1	Cover	
18	2418F436	1		
19	36813137	1		
20	0096238	4	Screw	
21	0920053	4	Washer	
22	2183205	10	Screw	
23	0920053	10	Washer	
24	2183205	4	Screw	
25	0920053	4	Washer	
26	3241H004	1	Plate	
27	33825419	1		
28	2183203	4	Screw	
29	0920053	4	Washer	
30	36171121	1	Base Plate	
31	36833119	1		
32	2183104	2	Screw	
33	0920052	2	Washer	
34	32161217	1	Screw	
35	33115408	1	Shim	
36	31733121	1	Washer	
37	33153128	1	Washer	
38	36235118	1	Base Plate	
39	36862138	1		
40	2183204	2	Screw	
41	0920053	2	Washer	
42	37556148	1	Base Plate	
43	36861429	1		
44	0748505	1	Screw	
45	2238153	1	Nut	
46	0920054	1	Lock Washer	
47	2232151	2	Screw	
48	2238153	2	Nut	
49	0920054	2	Lock Washer	



Item	Part Number	Qty	Description	Comments
				A4.236 ENGINE- .
1	4111K051	1	Balancer	
2	4145L007	1	Frame	(1)
3		1		(2) Not serviced, order REF.2
4		1		(2) Not serviced, order REF.2
5	2315C052	4	Screw	(2)
6	2314J005	2	Screw	(2)
7	33137408	2	Bush	
8	32558314	1	Plug	(1)
9	2431A054	1	Plug	(1)
10	3272E005	1	Piston	(1)
11	3174D004	1	Spring	(1)
12	3342A611	1	Washer	(1)
13	2116A056	1	Pin	(1)
14	3753R061	1	Cover	(1)
15	3687M006	1		(1)
16	0350042	2	Dowel	(1)
17	2315C052	4	Screw	(1)
18	3117V003	1	Shaft	(1) Number of teeth/spines 21
19	2551A009	1	Bearing	(1)
20	3116K014	1	Weight	(1) Number of teeth/spines 16/38
21	2511A730	1	Bush	(1)
22	2511A730	1	Bush	(1)
23	3117C071	1	Gear	(1) Number of teeth/spines 37
24	33451804	1	Hub	(1)
25	2314J606	1	Screw	(1)
26	2551A201	1	Bearing	(1)
27	3321A002	1	Washer	(1)
28	3116K004	1	Weight	(1) Number of teeth/spines 38
29	2511A730	1	Bush	(1)
30	2511A730	1	Bush	(1)
31	4132F041	1	Pump	(1) Repairs and replaces 4132F021
32	2314J606	1	Screw	(1)
33	2314H012	2	Screw	(1)
34	3116W001	1	Gear	(1) Number of teeth/spines 24
35	2551A014	1	Bearing	(1)
36	33531136	1	Nut	(1)
37	3661K001	1	Cover	(1)
38	2314C034	4	Screw	(1)
39	3764E031	1	Pipe	
40	3683L002	1	Universal Joint	
41	2314H006	1	Screw	Repairs and replaces 2315C053
42	2314H012	2	Screw	Repairs and replaces 2315C059
43	0096442	1	Screw	
44	33115129	1	Washer	
45	0096441	2	Screw	
46	33115129	2	Washer	
47	0096441	1	Screw	
48	33115129	1	Washer	
49	0096439	2	Screw	
50	33115129	2	Washer	



MASSEY FERGUSON

MF 374 F - H TRACTOR, ->| 30/09/93 - 3311557

3311557

FUEL INJECTION EQUIPMENT (DIESEL) - A4.236 ENGINE- .

18

Item	Part Number	Qty	Description	Comments
				A4.236 ENGINE- .
1	38313	1	Pump	Up to Serial or Engine Number 88/08
	2643C282	1	Pump	From Serial or Engine Number 88/09
2	3281M002	1	Sleeve	Repairs and replaces 2644951
3	31718104	1	Sealer	
4	31718105	1	Wire	
5	3687H012	1		
6	2217139	3	Screw	
7	353916X1	3	Nut	
8	390972X1	3	Washer	
9	0920053	3	Washer	
10	41115136	1	Gear	Number of teeth/spines 56
11		1	Gear	(10) Not serviced, order REF.10
12	0350010	1	Dowel	(10)
13	353517X1	3	Screw	
14	0920053	3	Washer	
15	35343136	1	Pipe	NO.1 CYL. Repairs and replaces 35343025
16	35343136	1	Pipe	NO.2 CYL.
17	35343138	1	Pipe	NO.3 CYL.
18	35343139	1	Pipe	NO.4 CYL.
19	36511123	2	Plate	
20	36511123	2	Plate	
21	36844116	2	Block	
22	36844116	2	Block	
23	0726505	2	Screw	
24	2211401	2	Nut	
25	2645L003	4	Atomiser	Repairs and replaces 2645C010
26	2646460	1	Body	(25)
27	2646842	1	Nozzle	(25)
28	0921173	4	Washer	
29	33813129	4	Spacer	
30	33813131	4		
31	0746259	8	Screw	
32	3558X011	1	Pipe	
33	0095315	3	Filler	
34	0920107	3	Washer	
35	0920107	3	Washer	
36	0201526	1	Union	
37	0920107	1	Washer	
38	0920107	1	Washer	
39	0206102	1	Union	
40	33225412	1	Nut	
41	33811112	1	Spinner	



**Suggest:**

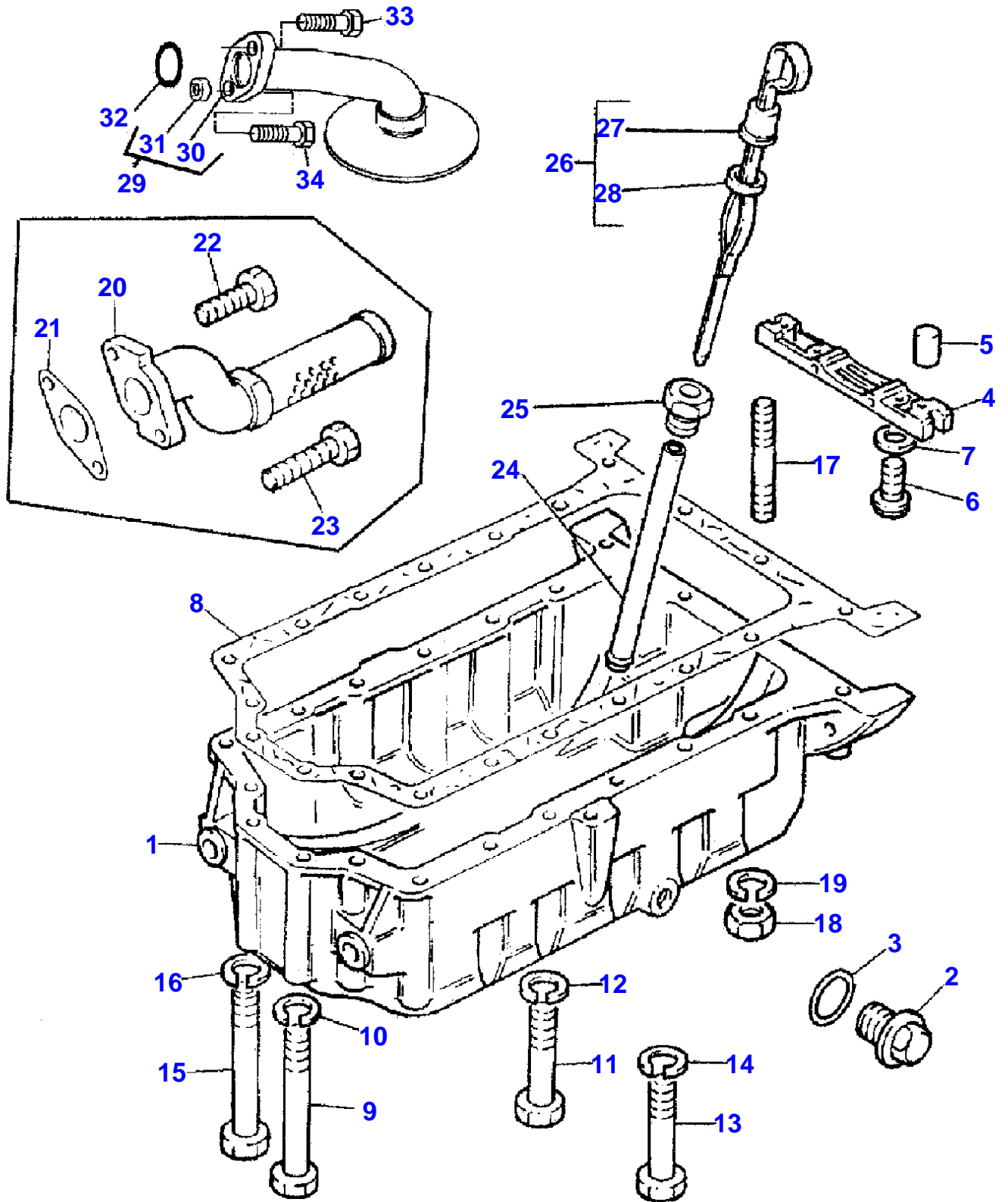
**If the above button click is invalid.**

**Please download this document**

**first, and then click the above link**

**to download the complete manual.**

**Thank you so much for reading**



**<https://www.ebooklibonline.com>**

Hello dear friend!

Thank you very much for reading.

Enter the link into your browser.

The full manual is available for immediate download.

**<https://www.ebooklibonline.com>**