

Page Title	Page Number
ENGINE ASSEMBLY-T3.152.4 ENGINE	1
SHORT ENGINE-TABLE PK ACEC9107	2
CYLINDER BLOCK-T3.152.4 ENGINE	3
CRANKSHAFT, PISTONS AND CONNECTING RODS-T3.152.4 ENGINE	4
CYLINDER HEAD-T3.152.4 ENGINE	5
ROCKER SHAFT-T3.152.4 ENGINE	6
TIMING GEAR AND CAMSHAFT-T3.152.4 ENGINE	7
FUEL INJECTION EQUIPMENT-T3.152.4 ENGINE	8
LUBRICATING OIL SUMP-T3.152.4 ENGINE	9
LUBRICATING OIL FILTER AND INTEGRAL COOLER-T3.152.4 ENGINE	10
WATER PUMP, THERMOSTAT AND HEAT EXCHANGER-T3.152.4 ENGINE	11
FUEL SYSTEM AND FILTER-T3.152.4 ENGINE	12
TURBOCHARGER-T3.152.4 ENGINE	13
TURBOCHARGER-T3.152.4 ENGINE	14
TURBOCHARGER-T3.152.4 ENGINE	15
ALTERNATOR POSITIONER-T3.152.4 ENGINE	16
JOINTS AND GASKETS-T3.152.4 ENGINE	17
HEATER KIT-COLD CLIMATE	18
ALTERNATOR	19
ALTERNATOR-VALEO TYPE	20
ALTERNATOR-ISKRA TYPE	21
STARTER MOTOR-MARELLI TYPE	22
STARTER MOTOR-BOSCH	23
STARTER MOTOR-ISKRA TYPE	24
COOLING SYSTEM-FAN AND HOSES	25
COOLING SYSTEM-RADIATOR AND BRACKET	26
FUEL SYSTEM	27
FUEL TANK	28
DRY AIR FILTER-DRY AIR CLEANER	29
EXHAUST SYSTEM	30
TURBOCHARGER-WITH EXHAUST HORIZONTAL	31
EXHAUST SYSTEM	32
HAND AND FOOT THROTTLE CONTROLS	33
BATTERY	34
INSTRUMENT PANEL	35
INSTRUMENT PANEL	36
ELECTRICAL WIRING-FRONT	37
ELECTRICAL WIRING-REAR	38
LIGHTING EQUIPMENT	39
LIGHTING EQUIPMENT	40
LIGHTING EQUIPMENT	41
CLUTCH-O.M.G. - 11	42
CLUTCH-LUK - 11	43
CLUTCH PEDAL AND LINKAGE	44
LOWER CLUTCH P.T.O.	45
CENTRE AXLE HOUSING AND TRANSMISSION HOUSING	46
CENTRE AXLE HOUSING AND TRANSMISSION HOUSING	47
TRANSMISSION	48
TRANSMISSION	49
SHIFT LEVERS	50
GEAR BOX	51
REDUCER OPTION-FOR SHUTTLE VERSION ONLY.	52
GEAR BOX-FOR SHUTTLE VERSION ONLY.	53
GEAR BOX-FOR SPECIAL OPTIONS VERSION ONLY	54
REDUCER OPTION-OVERDRIVE AND SHUTTLE VERSION	55
REDUCER OPTION-OVERDRIVE AND UNDERDRIVE VERSION	56
REDUCER OPTION-OVERDRIVE AND CREEPER VERSION	57
REDUCER OPTION-UNDERDRIVE AND SHUTTLE VERSION	58
REDUCER OPTION-UNDERDRIVE E CREEPER VERSION	59
REDUCER OPTION-SHUTTLE AND CREEPER VERSION	60
PTO SHAFT-STANDARD TYPE	61
PTO-CONTROL-540 R.P.M. STD	62
PTO SHAFT-540/750/1000 R.P.M.	63
PTO-CONTROL-540/750/1000 R.P.M.	64
TRANSFER GEAR BOX AND DRIVE SHAFT:	65
4 WHEEL DRIVE CONTROLS	66

TABLE OF CONTENT

REAR AXLE	67
REAR AXLE	68
REAR AXLE DIFFERENTIAL LOCK MECHANISM	69
DIFFERENTIAL LOCK CONTROLS	70
DIFFERENTIAL LOCK CONTROLS	71
BRAKE AND CONTROLS	72
BRAKE AND CONTROLS-DEVICE	73
BRAKE AND CONTROLS-PIPINGS	74
BRAKE AND CONTROLS-PIPINGS FRONT	75
BRAKES	76
MASTER CYLINDER-BRAKE PUMP	77
BRAKE CYLINDER	78
REAR WHEELS	79
FRONT WHEELS	80
FRONT AXLE 2 WHEEL DRIVE	81
FRONT AXLE 4 WHEEL DRIVE	82
FRONT AXLE 4 WHEEL DRIVE	83
FRONT AXLE 4 WHEEL DRIVE	84
STEERING HYDRAULIC LINES	85
STEERING HYDRAULIC LINES	86
STEERING HYDRAULIC LINES	87
STEERING ORBITROL UNIT-2 WHEEL DRIVE	88
STEERING ORBITROL UNIT-4 WHEELS DRIVE	89
STEERING-PUMP-TUROLLA	90
STEERING-PUMP-BOSCH	91
STEERING CYLINDER	92
STEERING CYLINDER	93
HYDRAULIC EQUIPMENT-HIDRAULIC LINES STD.	94
HYDRAULIC EQUIPMENT-SINGLE HYDRAULIC LINES	95
HYDRAULIC EQUIPMENT-SINGLE HYDRAULIC LINES	96
HYDRAULIC PUMP-TUROLLA	97
HYDRAULIC PUMP-BOSCH	98
HYDRAULIC PUMP-CESSNA	99
HYDRAULIC LIFT VALVE-WITH MECANICS RISER	100
HYDRAULIC LIFT-WITH MECANICS RISER	101
HYDRAULIC LIFT-WITH MECANICS RISER	102
HYDRAULIC LIFT-WITH ELECTRONIC LIFT	103
HYDRAULIC LIFT-WITH ELECTRONIC LIFT	104
ELECTRICAL WIRING-WITH ELECTRONIC LIFT	105
HYDRAULIC LIFT VALVE-WITH ELECTRONIC LIFT	106
ELECTRICAL WIRING-CONTROL PANEL	107
ELECTRONIC LIFT	108
MECHANICAL CONTROL LIFT	109
MECHANICAL CONTROL LIFT	110
MECHANICAL CONTROL LIFT	111
AUXILIARY HYDRAULIC VALVE LINES	112
AUXILIARY HYDRAULIC VALVE LINES	113
PLATE FOR AUXILIARY HYDRAULIC VALVE-HIDROIRMA TYPE.	114
AUXILIARY HYDRAULICS VALVE STANDARD-HYDROIRMA TYPE STANDARD	115
AUXILIARY HYDRAULICS FLOATING-HYDROIRMA TYPE FLOATING	116
AUXILIARY HYDRAULIC VALVE LINES	117
AUXILIARY HYDRAULICS-CONTROL WITH 1.0 AND 2.0 DISTRIBUTOR.	118
AUXILIARY HYDRAULIC VALVE LINES-SINGLE HYDRAULIC LINES	119
AUXILIARY HYDRAULICS VALVE-TILL TYPE STANDARD	120
AUXILIARY HYDRAULICS VALVE-TILL TYPE FLOATING	121
LINKAGE	122
LINKAGE-MECANICS LIFT CYLINDER RIGTH	123
HYDRAULIC LIFT CYLINDER-HYDRAULIC LIFT CYLINDER,WITH 1'AND 2'AUXIL.HYD	124
LINKAGE	125
SHEET METAL	126
SHEET METAL	127
SIDE COVER-SHIELD FAN	128
SHEET METAL	129
DECALS	130
DECALS	131
DECALS	132
FENDERS - FRONT	133
FENDERS AND PLATFORM	134

TABLE OF CONTENT

FENDERS AND PLATFORM	135
REAR SHEET METAL	136
SEAT	137
SEAT	138
SEAT	139
SAFETY FRAME	140
ROTATING LIGHT	141
WEIGHT FRAME AND WEIGHTS W	142
HITCH CONNECTIONS-WITHOUT HITCH	143
REAR HOOK	144
DRAWBAR-HEAVY DUTY	145
DRAWBAR-	146
TOOL KIT	147
SEALERS AND LIQUID GASKETS ADHESIES	148
REDUCER OPTION	149
REDUCER OPTION-SHUTTLE AND CREEPER VERSION	150
REDUCER OPTION-OVERDRIVE AND CREEPER VERSION	151
REAR HOOK	152

<https://www.ebooklibonline.com>

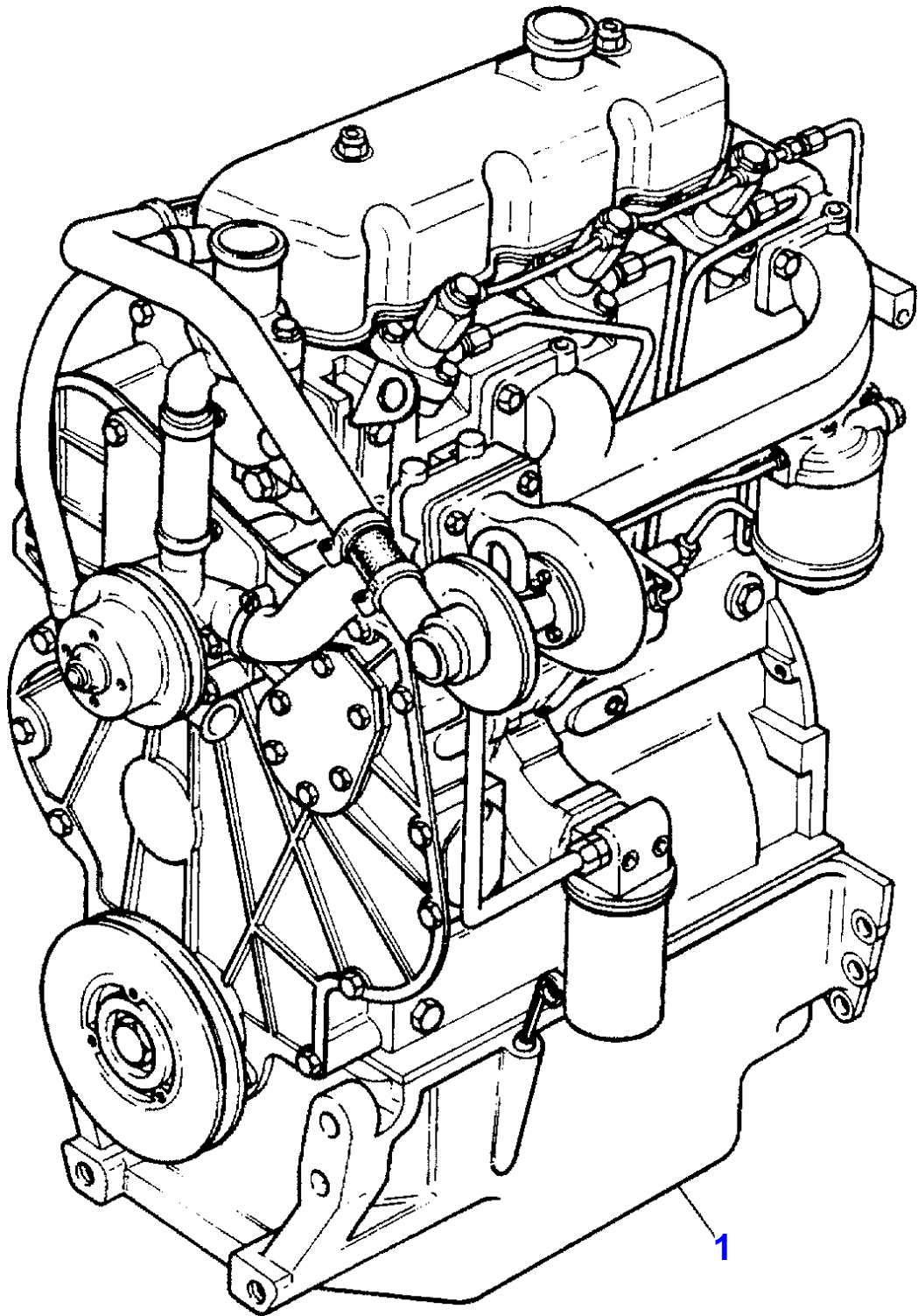
Hello dear friend!

Thank you very much for reading.

Enter the link into your browser.

The full manual is available for immediate download.

<https://www.ebooklibonline.com>



MASSEY FERGUSON

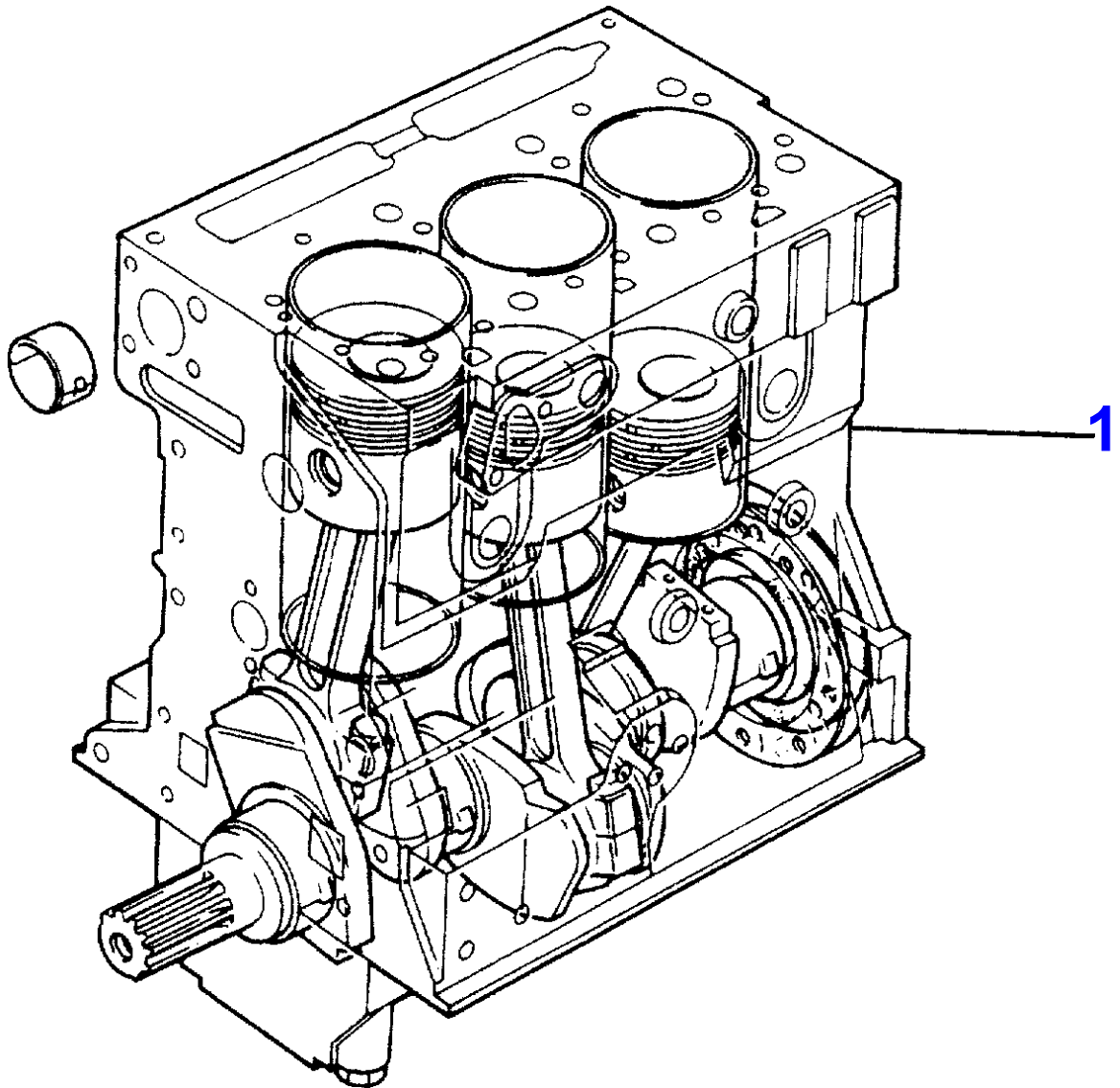
MF 364 V FOOTSTEP TRACTOR - 3540305

3540305

ENGINE ASSEMBLY-T3.152.4 ENGINE

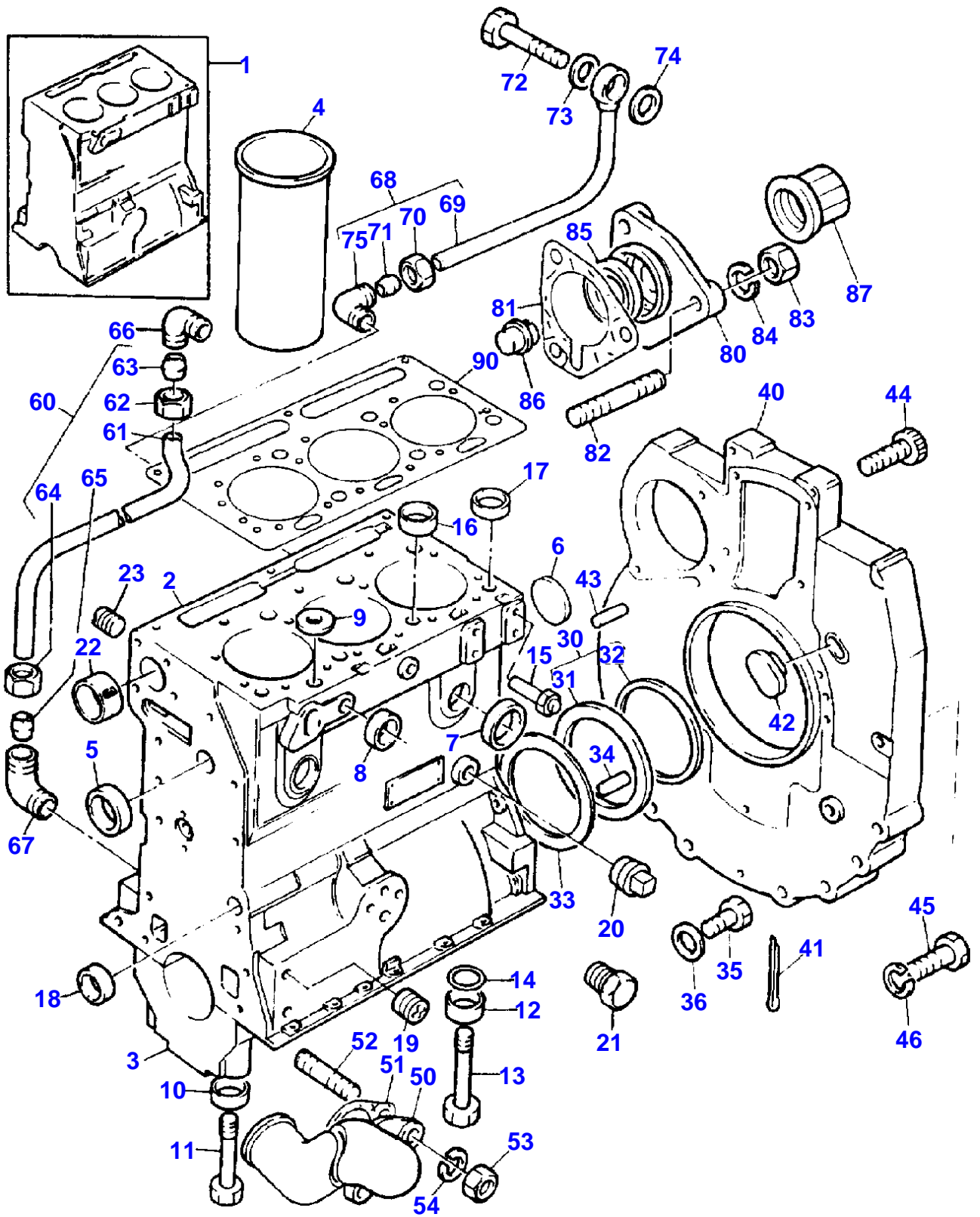
1

Item	Part Number	Qty	Description	Comments
1	3553117M91	1	Engine	[C] "CN31198"
1	3553116M91	1	Engine	[D] "CN31225"
				[C] STD.HYDRAULIC LINES
				[D] SINGLE HYDRAULIC LINES



SHORT ENGINE-TABLE PK ACEC9107

Item	Part Number	Qty	Description	Comments
1	CN39125	1	SHORT ENGINE	[A] "CN39117"
2		1		[B]
		3		(1)
		1		(1)
		2		(1)
		1		(1)
		3		(1)
		3		(1)
		3		(1)
		1		(1)
		4		(1)
		1		(1)
		1	HOUSING	(1)
				[B] COMPLETE WITH PLUGS
				[A] LIP SEAL



CYLINDER BLOCK-T3.152.4 ENGINE

Item	Part Number	Qty	Description	Comments
1	ZZ 50133	1	BLOCK	Up to Serial or Engine Number
	ZZ 50206	1	BLOCK	From Serial or Engine Number
2		1		(1) Not serviced, order REF.1
3		4		(1) Not serviced, order REF.1
4	31358323	3	Liner	[A, X] (1) 00.003.003.006
4	31358345	X	Liner	[B]
	31358357	X	Liner	[B] Thickness (+)0.76MM Thickness (+)0.030
5	0650710	1	Plug	(1)
6	0650692	1	Plug	(1)
7	0650710	4	Plug	(1)
8	32417163	2	Plug	(1)
9	33141124	1	Plug	(1)
10	33137408	6	Thimble	(1)
11	32181441	6	Screw	(1)
12	33137408	2	Thimble	(1)
13	32181442	2	Screw	(1)
14	2415608	2	O Ring	(1)
15	2485A204	1	Plug	(1)
16	33157142	2	Plug	(1)
17	33157143	2	Plug	(1)
18	0650566	2	Plug	(1)
19	32114472	3	Plug	(1)
20	0650593	1	Plug	(1)
20	0650594	1	Plug	Up to Serial or Engine Number U726816K [D] From Serial or Engine Number U726817K
21	32161114	1	Plug	(1)
22	32114143	1	Plug	(1)
23	31134128	1	Bush	(1)
30	4142V002	1	Housing	[X] . 1. 2. 4
31		1		(30) Not serviced, order REF.30
32	2418F475	1	Seal	(30)
33	33826115	1	GASKET	[X] . 1. 2. 4
34	0350015	2	Dowel	
35	2183205	9	Screw	
36	390972X1	9	Washer	
			Metric	
40	37147975	1	Plate	
41	0610045	1	Pin	
42	37813113	1	Plug	
43	0350016	2	Dowel	
44	0720798	2	Screw	
45	0746454	6	BOLT	
46	0920054	6	Washer	
50	3765T011	1	Connection	
51	3686J003	1	GASKET	
52	2217072	2	Stud	
53	0576002	2	Nut	
54	0920053	2	Washer	
60	35352404	1	Pipe,Oil	
61		1		(60) Not serviced, order REF.60
62	0576111	1	Nut	(60)
63	0566002	1	Olive	(60)
64	0576111	1	Nut	(60)
65	0566002	1	Olive	(60)
66	0201047	1	Connection	
67	0201047	1	Connection	
68	35568109	1	Pipe,Oil	
69		1	PIPE	(68) Not serviced, order REF.68
70	0576111	1	Nut	(68)

CYLINDER BLOCK-T3.152.4 ENGINE

Item	Part Number	Qty	Description	Comments
71	0566002	1	Olive	(68)
72	0095350	1	Bolt	
73	2411118	1	Washer	
74	2411118	1	Washer	
75	0201047	1	Connection	
80	37556191	1	Plate	[E]
81	36862605	1	GASKET	
82	2183205	3	Screw	[F]
82	2183203	3	Screw	[G]
83	0920053	3	Washer	
90	3681E024	1	GASKET	[X]

. 4. 4. 8

[A]

PRESS FIT

[B]

SLIP FIT

[X]

QTY PER TRACTORS SOLD (AA.BBB.CCC.DDD) (AA) FOR 1 ,(BBB) 2-10 (CCC) 11-25 (DDD) 26-50

[D]

FITTED IN PLACE OF OIL PRESSURE RAIL PLUG SUPPLIED WITH CYLINDER BLOCK ASSEM

[C]

REMOVE AND FIT 0650594

[F]

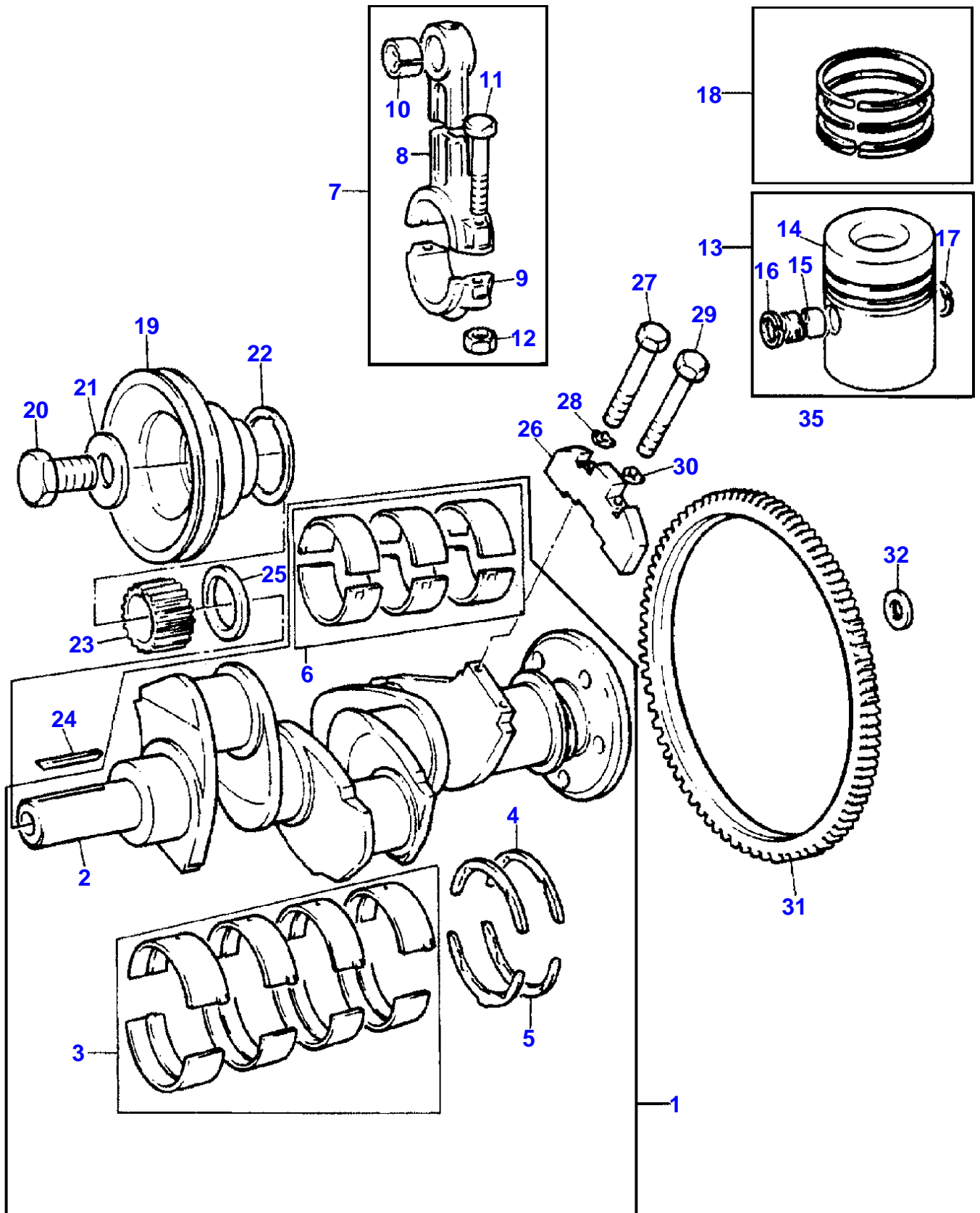
USED ONLY WITH 37416753

[G]

USED ONLY WITH 37556191

[E]

WAS 37416753 - USE 37556191 WITH 2183203-3

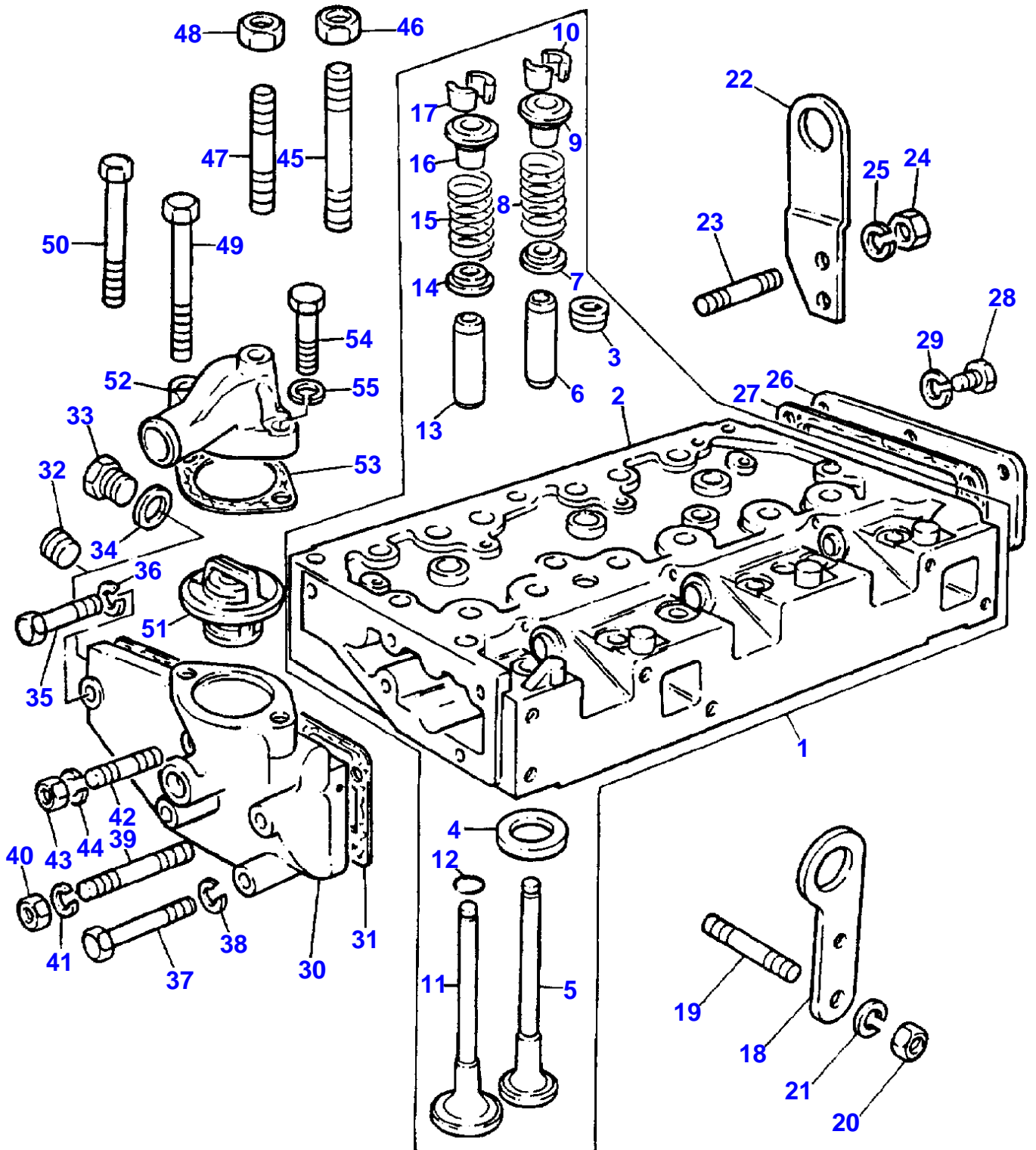


CRANKSHAFT, PISTONS AND CONNECTING RODS-T3.152.4 ENGINE

Item	Part Number	Qty	Description	Comments
1	ZZ90106	1	SHAFT	
2		1		(1) Not serviced, order REF.1
3	U5MB0008	1	KIT	[A, X] . 1. 2. 3
3	68084A	X	Kit, Bearing	[A] Thickness (-)0.25MM Thickness (-)0.010 U5MB0008A
3	U5MB0008B	X	KIT	[A] Thickness (-)0.50MM Thickness (-)0.020
3	U5MB0008C	X	KIT	[A] Thickness (-)0.75MM Thickness (-)0.030
4	31137211	2	Thrust Washer	[X] (1) . 1. 2. 3
4	31137212	X	Washer	Thickness (+)0.19MM Thickness (+)0.0075
5	31137221	2	Thrust Washer	[X] (1) . 1. 2. 3
5	31137222	X	Washer	Thickness (+)0.19MM Thickness (+)0.0075
6	U5ME0005	1	KIT	[A, X] (1) . 1. 2. 3
6	U5ME0005A	X	KIT	[A] Thickness (-)0.25MM Thickness (-)0.010
6	U5ME0005B	X	KIT	[A] Thickness (-)0.50MM Thickness (-)0.020
6	U5ME0005C	X	KIT	[A] Thickness (-)0.75MM Thickness (-)0.030
7	ZZ90010	1	Kit, Conrod	[X] . 3. 6. 9
8		1	CONROD	(7) Not serviced, order REF.7
9		1	SUPPORT	(7) Not serviced, order REF.7
10	31134151	1	Bush	(7)
11	0095250	2	Bolt	(7)
12	33221327	2	Nut	(7)
13	U5LP0029	3	Kit, Piston	[B]
	U5LU0023	3	Kit, Piston	[C, X] . 3. 6. 9
14		1	PISTON	(13) Not serviced, order REF.13
15		1		(13) Not serviced, order REF.13
16	0170001	1	Circlip	(13)
17	0170001	1	Circlip	(13)
18	4181A017	3	Kit, Piston Ring	[X] . 3. 6. 9
19	31147788	1	PULLEY	
20	32162331	1	Screw	
21	33125112	1	Washer	
22	33176137	1	Washer	
23	31163495	1	GEAR	[D, G] Number of teeth/spines 25
23	31163495	1	GEAR	[E, H] Number of teeth/spines 25
24	36271704	1	Woodruff Key	
25	33125151	1	SPACER	
26	31328242	2	Weight	[F]
27	2185189	2	Screw	
28	31731515	2	Washer	Right Hand
29	2185189	2	Screw	
30	31731516	2	Washer	Left Hand
31	3552228M1	1	CROWNWHEEL	Number of teeth/spines 115

Item	Part Number	Qty	Description	Comments
32	33117127	6	Washer	

[A]
 PRE-FINISHED
 [C]
 PRE-TOPPED
 [B]
 UNTOPPED
 [X]
 QTY PER TRACTORS SOLD (AA.BBB.CCC.DDD) (AA) FOR 1 ,(BBB) 2-10 (CCC)
 11-25 (DDD) 26-50
 [D]
 FOR ENGINES BUILT TO BUILD LIST CN31198 (3553117M9 1).
 [E]
 FOR ENGINES BUILT TO BUILD LIST CN31225 (3553116M9 1).
 [G]
 STD.HYDRAULIC LINES
 [H]
 SINGLE HYDRAULIC LINES
 [F]
 REPLACES 31328241 IN ENGINE SETS ONLY(QTY 2).



CYLINDER HEAD-T3.152.4 ENGINE

Item	Part Number	Qty	Description	Comments
1	ZZ80113	1	CYLINDER HEAD	[X]
2		1		. 0. 1. 2 (1) Not serviced, order REF.1
3	2431154	2	Plug	(1)
4	3314A005	3	Insert	[X] (1)
5	3142A081	3	Valve Exhaust	. 6. 12. 24 [X] (1)
6	3313E011	3	Guide	. 3. 6. 18 [X] (1)
7	33415133	3	Washer	. 3. 6. 18 [X] (1)
8	0780006	3	Spring	(1)
9	33423148	3	Cap	[X] (1)
10	0230001	6	Cotter	. 3. 6. 18 [A, X] (1)
11	31431121	3	VALVE	. 3. 6. 18 [X] (1)
12	2415258	3	Seal	(1)
13	3313E011	3	Guide	(1)
14	33177518	3	Washer	(1)
15	0780006	3	Spring	(1)
16	33423148	3	Cap	(1)
17	0230001	6	Cotter	[A] (1)
18	3624V004	1	Plate	
19		2		
20		2		
21		2		[B]
22		1		[C]
23	2216194	2	SCREW	
24	2188135	2	Nut	
25	0920054	2	Washer	
26	3612M002	1	Plate	
27	36851416	1	GASKET	
28	353517X1	6	Screw Unf	
29	0920053	6	Washer	
30	3771K072	1	BODY	
31	3685A005	1	GASKET	[X] . 2. 4. 6
32	2431A054	1	Plug	
33	0650203	1	Plug	
34	2411157	1	Washer	
35	0096213	2	Bolt	Up to Serial or Engine Number 11/07/90
	2186219	2	SCREW	From Serial or Engine Number 12/07/90
36	0920053	2	Washer	
37	2185551	1	SCREW	
38	0920054	1	Washer	
39	2215179	1	STUD	Up to Serial or Engine Number 11/07/90
	2183205	1	Screw	From Serial or Engine Number 12/07/90
40	2188135	1	Nut	
41	0920054	1	Washer	
42	2217072	1	Stud	Up to Serial or Engine Number 11/07/90
	2186219	1	SCREW	From Serial or Engine Number 12/07/90
43	0576002	1	Nut	
44	0920053	1	Washer	
45	32524132	1	Stud	
46	33221329	1	Nut	
47	32524148	3	Stud	
48	33221329	3	Nut	
49	32181457	5	Screw	
50	32181458	9	Screw	
51	2485613	1	Thermostat	[X] . 2. 4. 16
52	3764A041	1	CONNECTION	
53	36834154	1	GASKET	[X] . 2. 4. 16
54	0746458	2	SCREW	

MASSEY FERGUSON

MF 364 V FOOTSTEP TRACTOR - 3540305

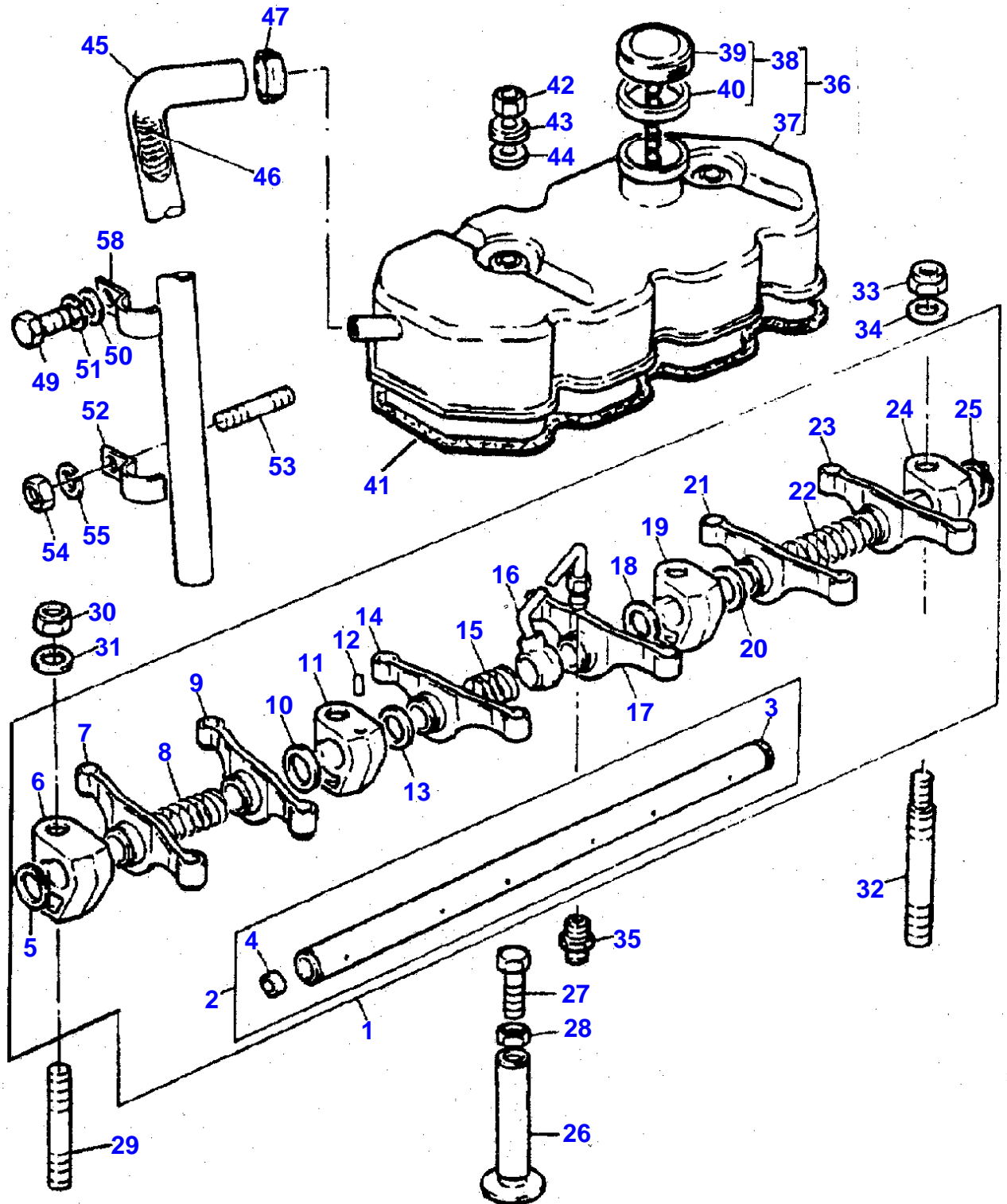
3540305

CYLINDER HEAD-T3.152.4 ENGINE

5

Item	Part Number	Qty	Description	Comments
55	0920054	2	Washer	

[A]
SERVICED IN PAIRS
[X]
QTY PER TRACTORS SOLD (AA.BBB.CCC.DDD) (AA) FOR 1 ,(BBB) 2-10 (CCC)
11-25 (DDD) 26-50
[B]
NOT REQUIRED FOR THIS APPLICATION
[C]
NOT SERVICED



ROCKER SHAFT-T3.152.4 ENGINE

Item	Part Number	Qty	Description	Comments
1	4115R805	1	Rocker Shaft Ass	[X]
				00.001.002.008
2	ZZ90047	1	Rocker Shaft	(1)
3		1	SHAFT	(2)
				Not serviced, order REF.2
4	0650507	2	Plug	(2)
5	0170033	1	Circlip	(1)
6	0101138	1	Bracket	(1)
7	3737A091	1	Lever	(1)
				Right Hand
8	0780005	1	Spring	(1)
9	3737A091	1	Lever	(1)
				Right Hand
10	0330505	1	Spacer	(1)
11	37521212	1	Bracket	(1)
12	2112A066	1	Pin	(1)
13	0330505	1	Spacer	(1)
14	3737A101	1	Lever	(1)
				Left Hand
15	0780175	1	Spring	(1)
16	35568352	1	Pipe,Oil	(1)
17	3737A091	1	Lever	(1)
				Right Hand
18	0330505	1	Spacer	(1)
19	0101138	1	Bracket	(1)
20	0330505	1	Spacer	(1)
21	3737A101	1	Lever	(1)
				Left Hand
22	0780005	1	Spring	(1)
23	3737A101	1	Lever	(1)
				Left Hand
24	0101138	1	Bracket	(1)
25	0170033	1	Circlip	(1)
26	0860012	6	Tappet	
27	32151116	6	Screw	
28	0576052	6	Nut	
29	2214209	2	Stud	
30	2211283	2	Nut	
31	0920004	2	Washer	
32	32754435	2	Stud	
33	2211283	2	Nut	
34	0920004	2	Washer	
35	0206002	1	Union	
36	37188197	1	COVER	
37		1		(36)
				Not serviced, order REF.36
38	2487854	1	Cap	(36)
39		1		(38)
				Not serviced, order REF.38
40	24870001	1	Joint	(38)
41	36811115	1	Joint	[X]
				. 2. 4. 10
42	0576102	2	Nut	
43	3314P004	2	Washer	
44	3381A003	2	Washer	
45	33872516	1	Pipe,Breather	
46	31754118	1	Spring	
47	21825195	1	Clip	
48	36561129	1	Clip	
49	2233204	1	Screw	
50	0920002	1	Washer	
51	0920052	1	Washer	
52	36561129	1	Clip	
53	2217570	1	Stud	
54	0576002	1	Nut	
55	0920053	1	Washer	

[X]

MASSEY FERGUSON

MF 364 V FOOTSTEP TRACTOR - 3540305

3540305

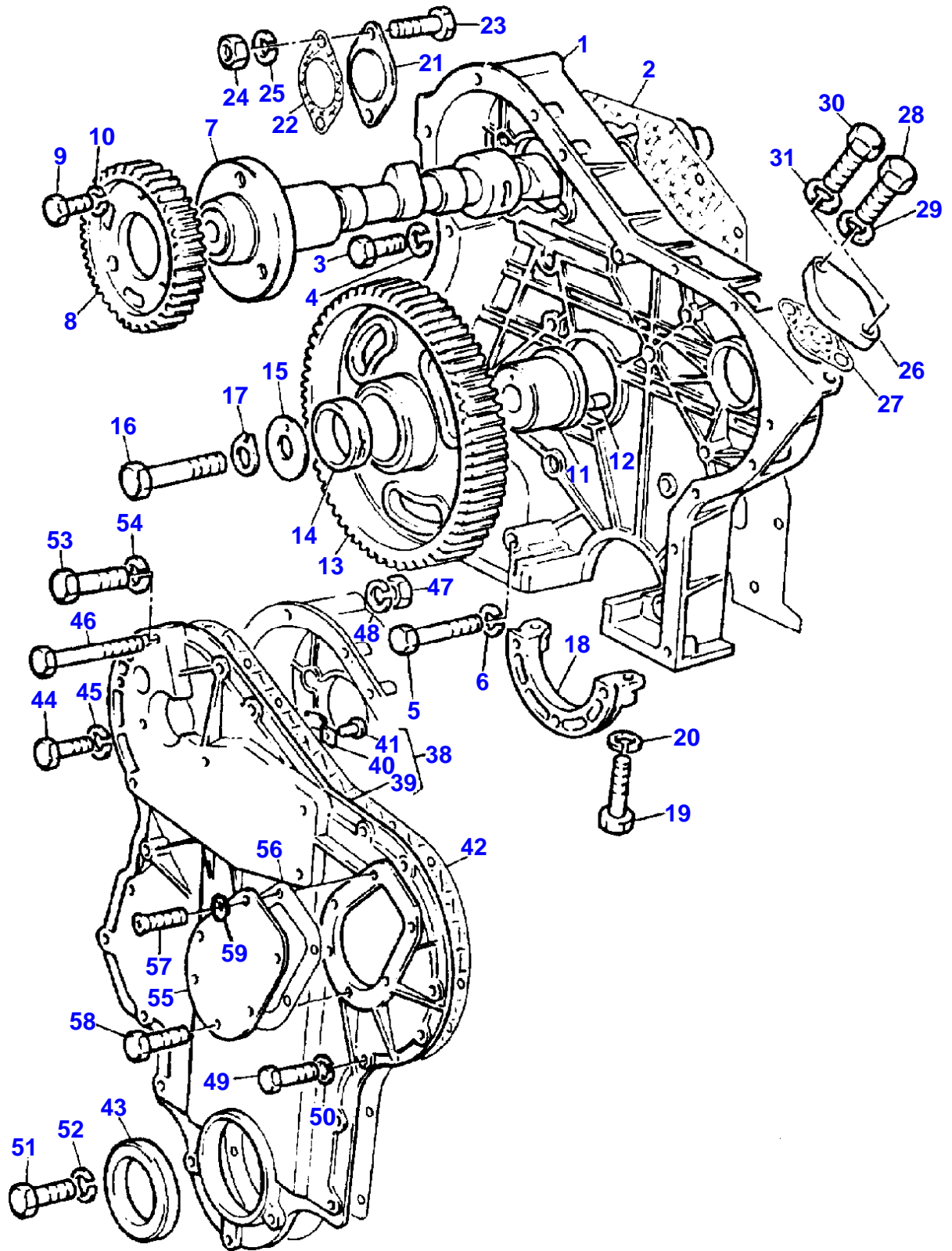
ROCKER SHAFT-T3.152.4 ENGINE

6

Item Part Number Qty Description

Comments

QTY PER TRACTORS SOLD (AA.BBB.CCC.DDD) (AA) FOR 1 ,(BBB) 2-10 (CCC)
11-25 (DDD) 26-50



TIMING GEAR AND CAMSHAFT-T3.152.4 ENGINE

Item	Part Number	Qty	Description	Comments
1	37161482	1	Timing Case	
2	36814161	1	GASKET	[X] . 1. 2. 8
3	0746355	12	Screw	
4	0920053	12	Washer	
5	0096234	2	Bolt	
6	0920053	2	Washer	
7	31415264	1	Camshaft	
8	31164131	1	GEAR	Number of teeth/spines 50
9	0746214	3	Screw	
10	0920053	3	Washer	
11	0995447	1	Hub	
12	0350005	1	Dowel	
13	31164362	1	Gear,Idler	[A, C] Number of teeth/spines 90
13	4111A015	1	Gear,Idler	[B, D] Number of teeth/spines 90
14	2511A735	1	Bush	
15	0940738	1	Plate	
16	0095199	1	Screw	
17	0920883	1	Washer	
18	37354312	1	Timinggear Cover	
19	0746259	2	SCREW	
20	0920053	2	Washer	
21	37461104	1	Plate	
22	36835413	1	Joint	
23	0748510	2	Bolt	
24	2238153	2	Nut	
25	0920054	2	Washer	
26	36172128	1	Plate	
27	36837413	1	Joint	
28	2183204	1	Screw	
29	0920053	1	Washer	
30	2183204	1	Screw	
31	0920053	1	Washer	
38	ZZ90039	1	Kit, Front Cover	
39		1	COVER	(38) Not serviced, order REF.38
40	3661P002	1	Spring	(38)
41	2126151	1	Rivet	(38)
42	36813158	1	GASKET	[X] . 1. 2. 8
43	2415344	1	Seal	[X] . 1. 2. 8
44	0748414	2	Setscrew	
45	0920053	2	Washer	
46	0096213	1	Bolt	
47	0576002	2	Nut	
48	0920053	2	Washer	
49	0748354	8	Screw	
50	0920052	8	Washer	
51	2233207	3	Screw	
52	0920053	3	Washer	
53	0096240	1	Bolt	
54	0920053	1	Washer	
55	36234114	1	Blanking Cover	
56	36862572	1	GASKET	
57	2233103	5	Screw	
58		1		
59	0920052	5	Washer	From Serial or Engine Number

[X]
 QTY PER TRACTORS SOLD (AA.BBB.CCC.DDD) (AA) FOR 1 ,(BBB) 2-10 (CCC)
 11-25 (DDD) 26-50
 [A]
 FOR ENGINES BUILT TO BUILD LIST CN31198 (3553117M9 1).
 [B]
 FOR ENGINES BUILT TO BUILD LIST CN31225 (3553116M9 1).
 [C]

MASSEY FERGUSON

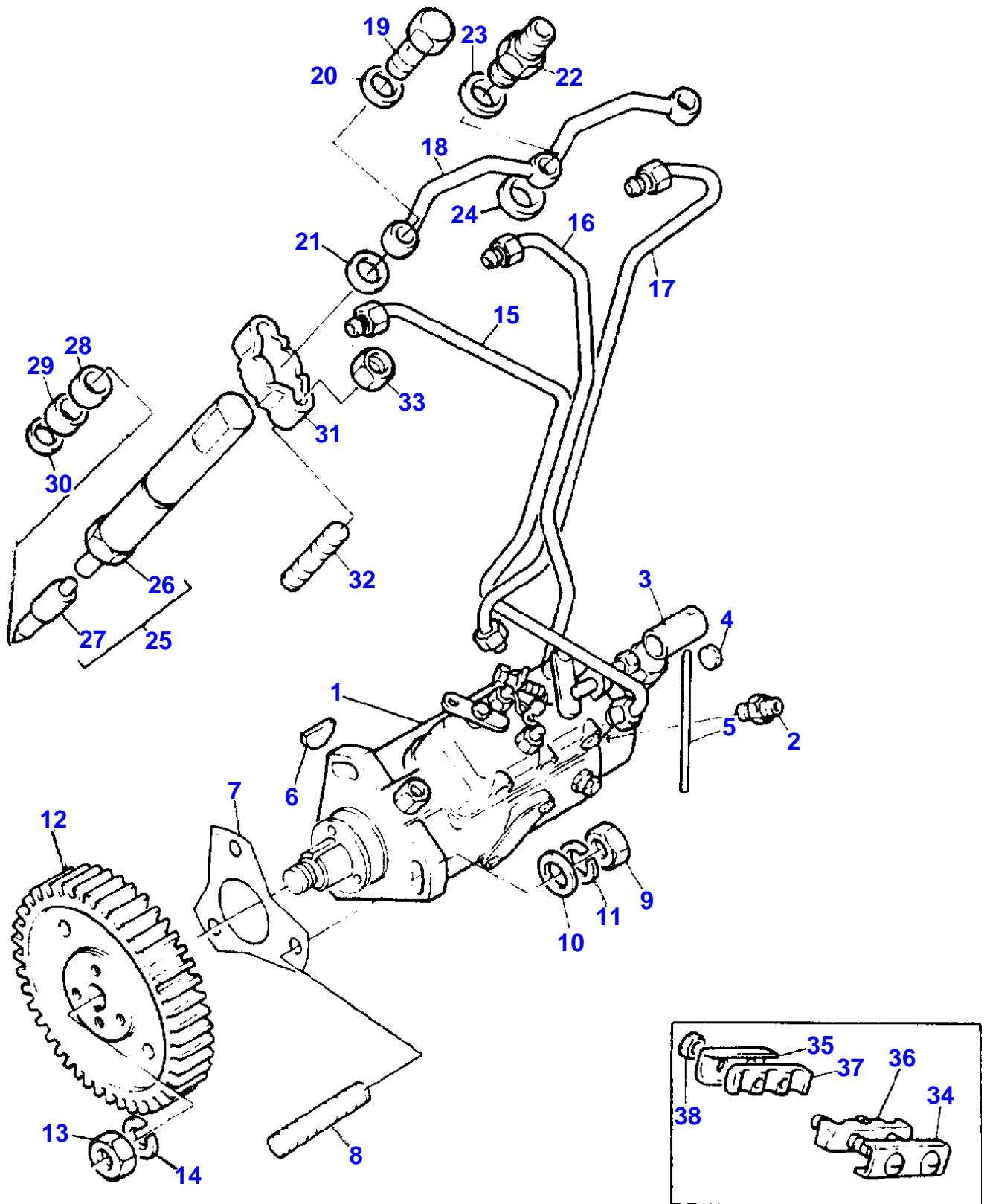
MF 364 V FOOTSTEP TRACTOR - 3540305

3540305

TIMING GEAR AND CAMSHAFT-T3.152.4 ENGINE

7

Item	Part Number	Qty	Description	Comments
				STD.HYDRAULIC LINES
				[D]
				SINGLE HYDRAULIC LINES





Suggest:

If the above button click is invalid.

Please download this document

first, and then click the above link

to download the complete manual.

Thank you so much for reading

Item	Part Number	Qty	Description	Comments
1	2643B132	1	PUMP	
2	28730179	1	Solenoid	
3	3281M002	1	SLEEVE	
4	31718104	1	Seal	
5	31718105	1	Wire	
6	26430809	1	Woodruff Key	
7	3687H011	1	GASKET	
8	2217575	3	Stud	
9	0576002	3	Nut	
10	390972X1	3	Washer Metric	
11	0920053	3	Washer	
12	3116K072	1	Gear,Fuel Pump	[A, C] Number of teeth/spines 50
12	3116K081	1	GEAR	[B, D] Number of teeth/spines 50
13		1	NUT	[F]
14	26430506	1	Washer	
15	3521E022	1	Injection Pipe	[X] NO.1 CYL. . 1. 2. 4
16	3521E023	1	Injection Pipe	[X] NO.2 CYL. . 1. 2. 4
17	3521E024	1	Injection Pipe	[X] NO.3 CYL. . 1. 2. 4
18	3558X013	1	Leak-Off Pipe	[X] . 1. 2. 4
19	0095315	2	Banjo Bolt	
20	0920107	2	Washer	
21	0921172	2	WASHER	
22	0201526	1	Union	
23	0920107	1	Washer	
24	0920107	1	Washer	
25	2645A013	3	Atomiser	[X] . 3. 6. 18
26	2645A301	1	Holder	(25)
27	2645K603	1	Nozzle	(25)
28	33813126	3	Spacer	
29	33813127	3	Seal	
30	0921173	3	Washer	
31		3	SUPPORT	Not serviced, order REF.39
32	2216108	6	Stud	
33	0576002	6	Nut	
34	38631117	1	Plate	
35	36511127	1	Plate	
36	36845115	1	Clip	
37	36845115	1	Clip	
38	2211401	2	Nut	
39	3662K002	3	Clamp	
40	26431164A	X	Shim	[E] (25) Thickness (+) 0,30MM
40	26431164B	X	Shim	Thickness (+) 0,42MM
	26431164C	X	Shim	Thickness (+) 0,44MM
	26431164D	X	Shim	Thickness (+) 0,46MM
	26431164E	X	SHIM	Thickness (+) 0,48MM
	26431164F	X	Shim	Thickness (+) 0,50MM
	26431164G	X	Shim	Thickness (+) 0,52MM
	26431164H	X	Shim	Thickness (+) 0,54MM
	26431164J	X	Shim	Thickness (+) 0,56MM
	26431164K	X	Shim	Thickness (+) 0,58MM
	26431164L	X	Shim	Thickness (+) 0,60MM
	26431164M	X	Shim	Thickness (+) 0,62MM
	26431164N	X	Shim	Thickness (+) 0,64MM
	26431164P	X	Shim	Thickness (+) 0,66MM
	26431164Q	X	SHIM	Thickness (+) 0,68MM
	26431164R	X	SHIM	Thickness (+) 0,70MM
	26431164S	X	SHIM	Thickness (+) 1,00MM
	26431164T	X	SHIM	Thickness (+) 1,28MM

<https://www.ebooklibonline.com>

Hello dear friend!

Thank you very much for reading.

Enter the link into your browser.

The full manual is available for immediate download.

<https://www.ebooklibonline.com>