

Page Title	Page Number
ENGINE - T3.152.4 ENGINE	1
SHORT ENGINE- . - TABLE PK ACEC9107- .	2
CYLINDER BLOCK - T3.152.4 ENGINE	3
CRANKSHAFT, PISTONS AND CONNECTING RODS - T3.152.4 ENGINE	7
CYLINDER HEAD - T3.152.4 ENGINE	10
ROCKER SHAFT - T3.152.4 ENGINE	13
TIMING GEAR AND CAMSHAFT - T3.152.4 ENGINE	16
FUEL INJECTION EQUIPMENT (DIESEL) - T3.152.4 ENGINE	19
LUBRICATING OIL SUMP - T3.152.4 ENGINE	21
LUBRICATING OIL FILTER AND INTEGRAL COOLER - T3.152.4 ENGINE	24
WATER PUMP, THERMOSTAT AND HEAT EXCHANGER - T3.152.4 ENGINE	25
LOW PRESSURE FUEL SYSTEM - T3.152.4 ENGINE	27
TURBOCHARGER - T3.152.4 ENGINE	28
TURBOCHARGER-INLET AND EXHAUST MANIFOLD - T3.152.4 ENGINE	30
TURBOCHARGER-PIPES AND HEAT SHIELDS - T3.152.4 ENGINE	31
ALTERNATOR POSITIONER - T3.152.4 ENGINE	33
JOINTS AND GASKETS - T3.152.4 ENGINE	34
HEATER - COLD CLIMATE	35
ALTERNATOR - ISKRA TYPE- .	36
ALTERNATOR - VALEO TYPE	38
ALTERNATOR-LUCAS - LUCAS- .	40
STARTER MOTOR - UP TO SERIAL NUMBER R35158- .	42
STARTER MOTOR - ISKRA TYPE- .	43
STARTER MOTOR - FROM SERIAL NO. R35159- .	45
STARTER MOTOR - FROM SERIAL NO. S12087- .	47
COOLING SYSTEM-ENGINE - FAN AND HOSES	48
EXHAUST SYSTEM-HORIZONTAL	49
EXHAUST SYSTEM-VERTICAL	51
AIR FILTER-DRY - DUAL ELEMENT - DRY AIR CLEANER- .	52
FUEL SYSTEM-FUEL TANK AND ATTACHMENTS	54
FUEL SYSTEM-FUEL FILTER	56
COOLING SYSTEM - RADIATOR AND BRACKET- .	58
THROTTLE CONTROLS	62
INSTRUMENT PANEL AND INSTRUMENTS	64
INSTRUMENT PANEL AND INSTRUMENTS	68
ELECTRICAL WIRING	69
ELECTRONIC HARNESS-INSTRUMENT PANEL	74
SENSORS HARNESS	75
LIGHTING EQUIPMENT-REAR	76
ELECTRICAL WIRING-TRACTOR CAB	77
LIGHTING EQUIPMENT	78
LIGHTING EQUIPMENT	83
BATTERY	84
CLUTCH-DUAL CLUTCH - LUK 11- - UP TO SERIAL NUMBER P50186- .	86
CLUTCH-DUAL CLUTCH - OMG 11- - UP TO SERIAL NUMBER P50186- .	88
CLUTCH-DUAL CLUTCH - O.M.G. FROM SERIAL N.P50187- .	90
CLUTCH-DUAL CLUTCH - LUK 11" FROM SERIAL N.P50187- .	92
CLUTCH PEDAL AND LINKAGE	94
CENTRE AXLE HOUSING AND TRANSMISSION HOUSING	97
CENTRE AXLE HOUSING AND TRANSMISSION HOUSING	98
12 SPEED TRANSMISSION - STANDARD VERSION	100
12 SPEED TRANSMISSION - STANDARD VERSION	103
SHIFT LEVERS-12 SPEED TRANSMISSION	106
SHIFT LEVERS-12 SPEED TRANSMISSION	108
GEAR BOX - FOR SHUTTLE VERSION ONLY.	110
REDUCER - FOR SHUTTLE VERSION ONLY.	111
REDUCER CONTROL - OVERDRIVE AND SHUTTLE VERSION	114
REDUCER - OVERDRIVE AND SHUTTLE VERSION	116
REDUCER CONTROL - OVERDRIVE AND UNDERDRIVE VERSION	120
REDUCER - OVERDRIVE AND UNDERDRIVE VERSION	122
REDUCER CONTROL - OVERDRIVE AND CREEPER VERSION	126
REDUCER - OVERDRIVE AND CREEPER VERSION	128
REDUCER CONTROL - UNDERDRIVE AND SHUTTLE VERSION	131
REDUCER - UNDERDRIVE AND SHUTTLE VERSION	132
REDUCER CONTROL - UNDERDRIVE E CREEPER VERSION	136
REDUCER - UNDERDRIVE E CREEPER VERSION	137

TABLE OF CONTENT

REDUCER CONTROL - SHUTTLE AND CREEPER VERSION	140
REDUCER - SHUTTLE AND CREEPER VERSION	141
PTO SHAFT - 540 R.P.M.- .	144
PTO SHAFT - 540 R.P.M.- .	146
PTO SHAFT - 540/750/1000 R.P.M.- .	148
PTO SHAFT - 540/750/1000 R.P.M.- .	151
PTO-CONTROL - 540 R.P.M.- .	153
PTO-CONTROL - 540/750/1000 R.P.M.- .	154
TRANSFER GEAR BOX-4 WHEEL DRIVE	156
4 WHEEL DRIVE CONTROLS	158
REAR AXLE-DIFFERENTIAL	159
REAR AXLE-HOUSING	161
REAR AXLE-DIFFERENTIAL LOCK MECHANISM - MECHANICAL CONTROL- .	164
BRAKE AND CONTROLS	165
BRAKE AND CONTROLS	167
BRAKES-HANDBRAKE	169
BRAKE CYLINDER	171
BRAKES-MASTER CYLINDER	173
REAR WHEELS	174
FRONT WHEELS	178
FRONT AXLE 2 WHEEL DRIVE-AXLE SUPPORT	182
FRONT AXLE 4 WHEEL DRIVE-DIFFERENTIAL	185
FRONT AXLE 4 WHEEL DRIVE-DIFFERENTIAL	188
FRONT AXLE 4 WHEEL DRIVE-FINAL DRIVE	190
FRONT AXLE 4 WHEEL DRIVE-DIFFERENTIAL	192
FRONT AXLE 4 WHEEL DRIVE-DIFFERENTIAL	195
FRONT AXLE 4 WHEEL DRIVE-FINAL DRIVE	198
STEERING ORBITROL UNIT - 2 WHEEL DRIVE	201
STEERING ORBITROL UNIT - 4 WHEELS DRIVE	203
STEERING HYDRAULIC LINES	205
STEERING HYDRAULIC LINES	207
STEERING CYLINDER-4 WHEEL DRIVE	210
STEERING CYLINDER-4 WHEEL DRIVE	211
STEERING CYLINDER-2 WHEEL DRIVE	212
STEERING-STEERING PUMP - UP TO SERIAL NUMBER R31000- .	214
STEERING-STEERING PUMP - FROM SERIAL NO- R31001.	215
HYDRAULIC LIFT PIPINGS - STANDARD VERSION	216
HYDRAULIC LIFT PIPINGS	218
HYDRAULIC LIFT PIPINGS - SINGLE HYDRAULIC LINES	221
HYDRAULIC PUMP - BOSCH	223
HYDRAULIC PUMP - TUROLA	224
HYDRAULIC PUMP - CESSNA	225
HYDRAULIC LIFT VALVE	227
HYDRAULIC LIFT-LIFT ARMS	229
HYDRAULIC LIFT-LIFT ARMS	231
REAR CONTROLS-DRAFT AND POSITION	233
REAR CONTROLS-DRAFT AND POSITION	236
HYDRAULIC LIFT CYLINDER - HYDRAULIC LIFT CYLINDER,WITH 1'AND 2'AUXIL.HYDRAUL .VAL	238
AUXILIARY HYDRAULIC VALVE LINES - TILL TYPE	240
AUXILIARY HYDRAULIC VALVE LINES - TILL TYPE	243
AUXILIARY HYDRAULIC VALVE LINES - WITH AUXILIARY HYDRAULIC VALVE CLEARANCE- .	246
AUXILIARY HYDRAULIC VALVE LINES - WITH AUXILIARY HYDRAULIC VALVE CLEARANCE- .	247
AUXILIARY HYDRAULICS VALVE - TILL TYPE STANDARD- .	248
AUXILIARY HYDRAULICS VALVE - TILL TYPE FLOATING- .	250
AUXILIARY HYDRAULIC VALVE LINES- HIDROIRMA - HIDROIRMA TYPE FROM SERIAL N.B08001- .	252
AUXILIARY HYDRAULIC VALVE LINES- HIDROIRMA - HIDROIRMA TYPE FROM SERIAL N.B08001- .	254
AUXILIARY HYDRAULIC VALVE LINES- HIDROIRMA - HIDROIRMA TYPE FROM SERIAL N.B08001- .	255
LINKAGETOP LINK - HIDROIRMA TYPE FROM SERIAL N.B08001- .	257
PLATFORM AUTOMATIC HITCHWITH REMOTE CONTROL - HIDROIRMA TYPE FROM SERIAL N.B08001- .	258
CONTROL VALVE-VALVE - HIDROIRMA TYPE FROM SERIAL N.B08001- .	259
ACCESSORIES HYDRAULIC - ADDITIONAL POWER OUTLET UNIT	260
LINKAGE CAT 2 - UP TP SERIAL NUMBER- .	261
LINKAGE CAT 2 - UP TP SERIAL NUMBER- .	264
LINKAGE CAT 2	267
LINKAGE CAT 2	270
LINKAGE-LINK END	273
SHEET METAL-GRILLE	274
SHEET METAL-HOOD	275

TABLE OF CONTENT

00

SHEET METAL-PANELS	277
DECALS	278
DECALS	281
DECALS	285
FENDERS - FRONT - 2WHEEL DRIVE	287
FENDERS - FRONT - 4 WHEEL DRIVE	288
FENDERS AND PLATFORM	290
SAFETY FRAME	295
ROTATING LIGHT	296
SEAT-GRAMMER	298
TRACTOR CAB-FRAME	301
TRACTOR CAB-ROOF	304
TRACTOR CAB-CAB DOOR	307
TRACTOR CAB-WINDOWS - FRONT - .	309
TRACTOR CAB-WINDOWS - REAR	311
TRACTOR CAB-CAB INSULATION	314
TRACTOR CAB-CAB INSULATION	315
TRACTOR CAB-ELECTRICAL EQUIPMENT	317
TRACTOR CAB-CAB INSULATION	318
TRAILER BRAKES-PIPES AND FITTINGS	320
WEIGHT FRAME AND WEIGHTS	322
REAR HOOK-ADJUSTABLE	323
DRAWBAR	324
DRAWBAR	325
REAR HOOK-ADJUSTABLE - STANDARD	326
TOOL KIT	327

<https://www.ebooklibonline.com>

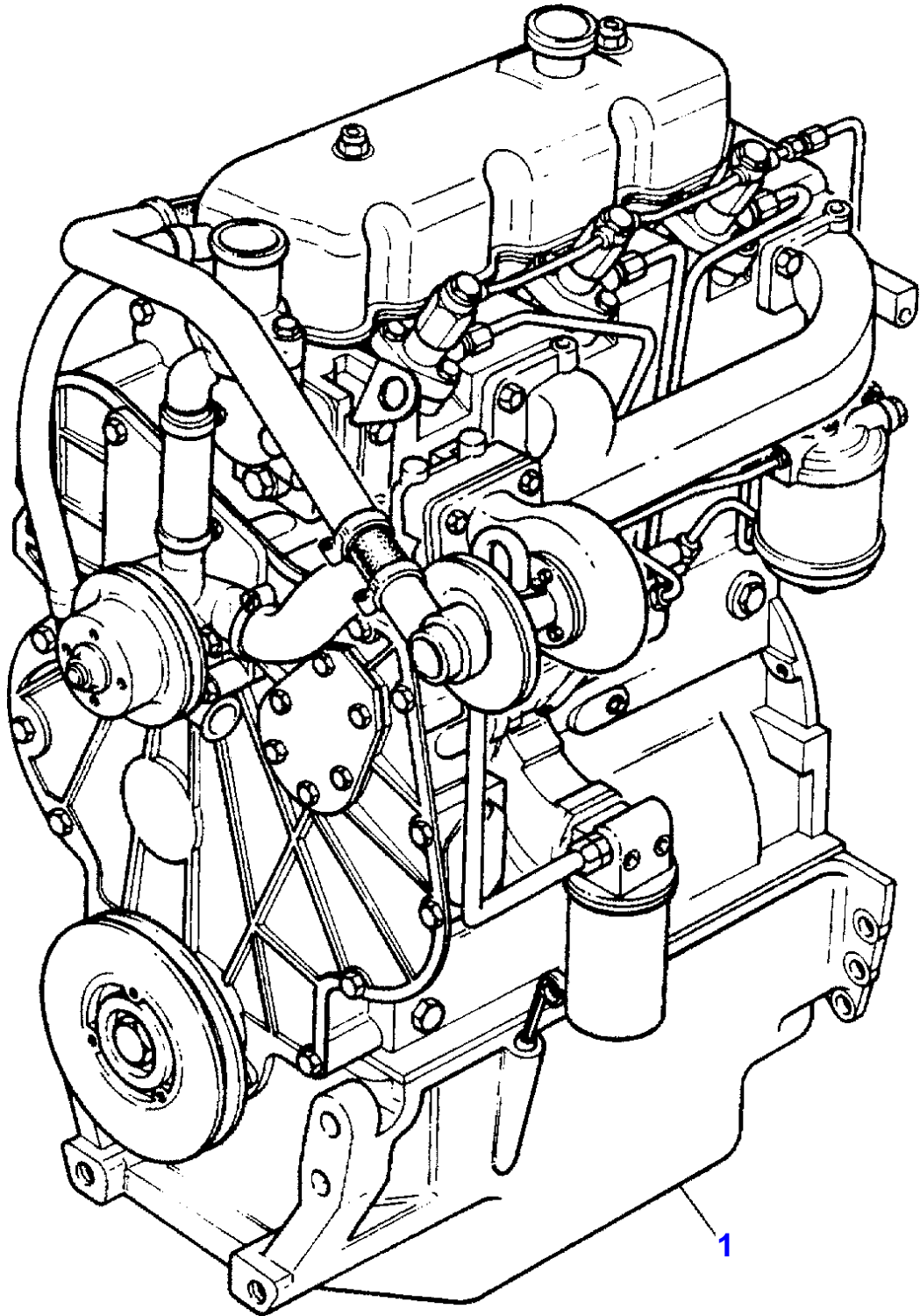
Hello dear friend!

Thank you very much for reading.

Enter the link into your browser.

The full manual is available for immediate download.

<https://www.ebooklibonline.com>



MASSEY FERGUSON

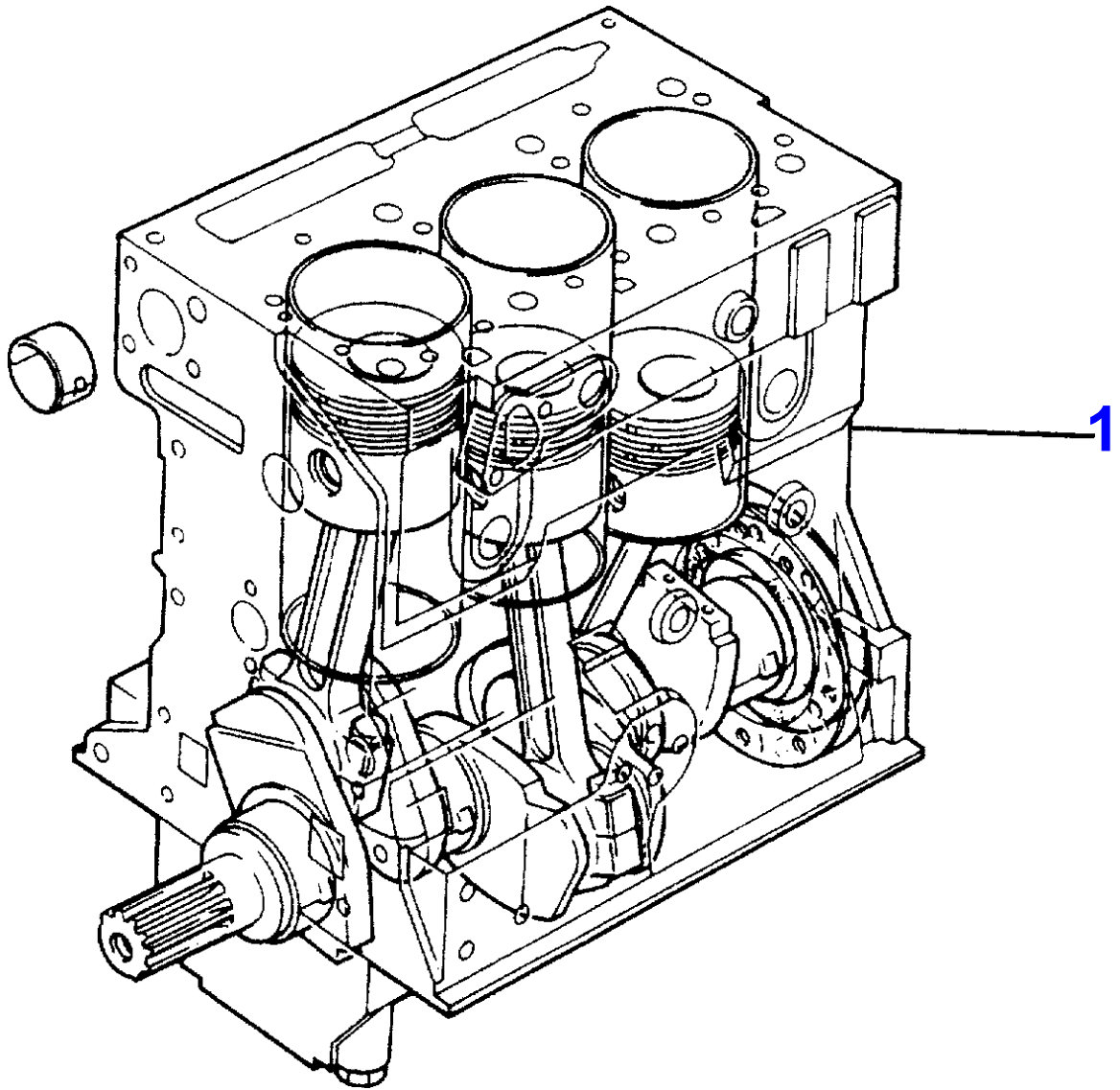
MF 364 F TRACTOR - 3311556

3311556

ENGINE - T3.152.4 ENGINE

1

Item	Part Number	Qty	Description	Comments
				T3.152.4 ENGINE
1	3553117M91	1	Engine	(A) Repairs and replaces CN31198
1	3553116M91	X	Engine	(B) Repairs and replaces CN31225
				(A) SINGLE STANDARD LINES
				(B) SINGLE HYDRAULIC LINES



MASSEY FERGUSON

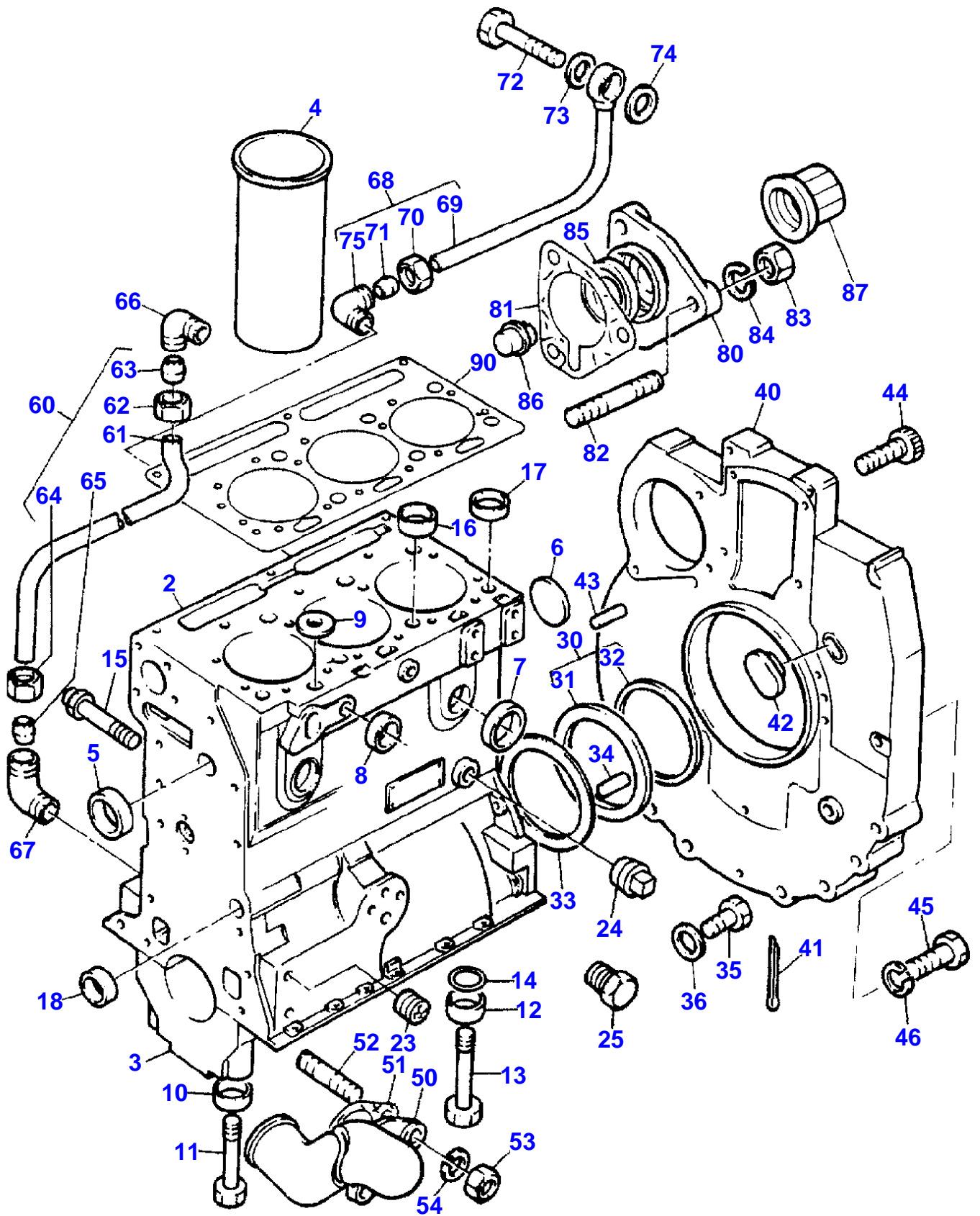
MF 364 F TRACTOR - 3311556

3311556

SHORT ENGINE- . - TABLE PK ACEC9107- .

2

Item	Part Number	Qty	Description	Comments
				TABLE PK ACEC9107- .
1	CN39125	1	Engine	(A) Repairs and replaces CN39117
2		1	Housing	(B)
		3	Liner	(1)
		1		(1)
2		2	Weight	(1)
		1		(1)
2		3	Piston	(1)
		3		(1)
2		3	Conrod	(1)
		1		(1)
2		4	Washer	(1)
		1		(1)
		1	Housing	(1)
				(A) LIP SEAL
				(B) COMPLETE WITH PLUGS



Item	Part Number	Qty	Description	Comments
T3.152.4 ENGINE				
1	ZZ 50206	1	Block	Repairs and replaces ZZ50172/3
2		1	Housing	Repairs and replaces ZZ50133 (1) Not serviced, order REF.1
3		4	Support	(1) Not serviced, order REF.1
4	31358356	3	Liner	(1) (A,B)
4	31358358	X	Liner	(1) (B) Thickness 0.030 .76MM
4	31358323	3	Barrel	O/S (1) (C,D)
4	31358345	X	Liner	(C,E)
5	0650710	1	Plug	(1)
6	0650566	1	Plug	(1)
7	0650710	4	Plug	(1)
8	32417115	2	Plug	(1)
9	33141124	1	Plug	(1)
10	33137408	6	Bush	(1)
11	32181441	6	Screw	(1)
12	33137408	2	Bush	(1)
13	32181442	2	Screw	(1)
14	2415608	2	Ring	(1)
15	2485A204	1	Plug	(1)
16	33157142	2	Plug	(1)
17	33157143	2	Plug	(1)
18	0650566	1	Plug	(1)
23	32114472	2	Plug	
24	0650593	1	Plug	Up to Serial or Engine Number U726816K
	0650594	1	Plug	From Serial or Engine Number U726817K
				Repairs and replaces 2431131
25	32161114	1	Plug	Repairs and replaces 32161357
30	4142V002	1	Ring	
31		1	Ring	(30) Not serviced, order REF.30
32	2418F475	1		(30)
33	33826111	1		
34	0350015	2	Pin	
35	2183205	9	Screw	
36	390972X1	9	Washer	
40	37147975	1	Plate	
41	0610045	1	Linch Pin	
42	37813113	1	Plug	
43	0350016	2		
44	0720798	2	Screw	
45	0746454	6	Screw	
46	0920054	6	Lock Washer	
50	3765T011	1	Union	
51	0490486	1		
52	2217072	2	Screw	
53	353916X1	2	Nut	
54	0920053	2	Washer	
60	35352404	1	Pipe	
61		1	Pipe	(60) Not serviced, order REF.60
62	0576111	1	Nut	(60)
63	0566002	1	Olive	(60)
64	0576111	1	Nut	(60)
65	0566002	1	Olive	(60)
66	0201047	1	Union	

MASSEY FERGUSON

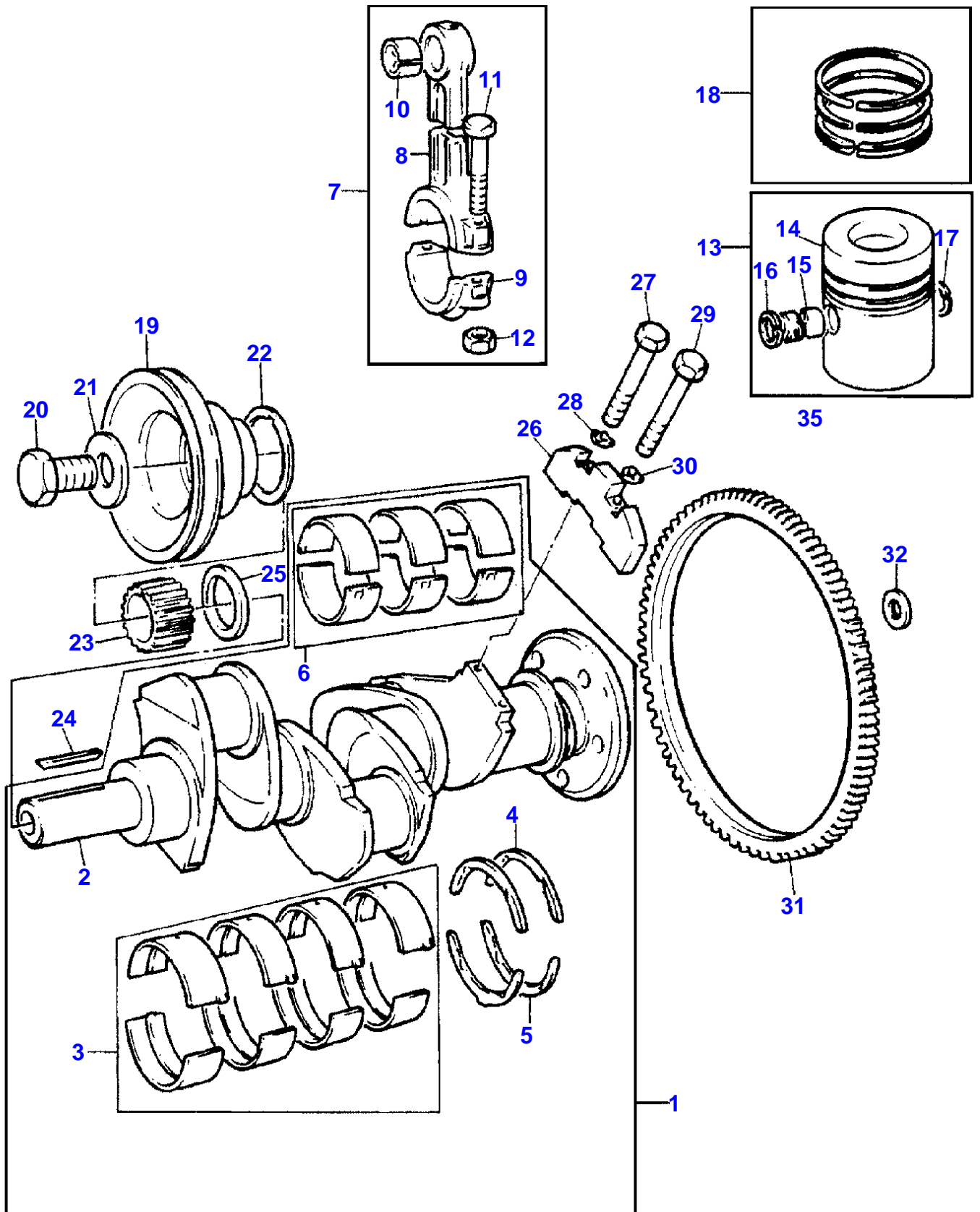
MF 364 F TRACTOR - 3311556

3311556

CYLINDER BLOCK - T3.152.4 ENGINE

3

Item	Part Number	Qty	Description	Comments
67	0201047	1	Union	
68	35568109	1	Pipe	
69		1	Pipe	(68) Not serviced, order REF .68
70	0576111	1	Nut	(68)
71	0566002	1	Olive	(68)
72	0095350	1	Union	
73	2411118	1	Washer	Repairs and replaces 0920126
74	2411118	1	Washer	Repairs and replaces 0920126
75	0201047	1	Union	
80	37556191	1	Cover	Repairs and replaces 37416753
81	36862605	1		Repairs and replaces 36862511 Repairs and replaces 21820518
82	0826201	3	Stud	
83	353916X1	3	Nut	
84	0920053	3	Washer	
90	3681E024	1		Repairs and replaces 3681E006/15 (A) PRESS FIT PARALLEL LINER. (B) USED ONLY WITH ZZ50133 (C) USED ONLY WITH ZZ50172 (D) PRESS FIT (E) SLIP FIT



Item	Part Number	Qty	Description	Comments
				T3.152.4 ENGINE
1	ZZ90106	1	Shaft	Repairs and replaces U5BG0043
2		1	Shaft	(1) Not serviced, order REF.1
3	U5MB0008	X	Kit	(A)
	68084A	X	Kit	(A) Thickness (-)0.25MM Thickness (-)0.010
3	U5MB0008B	X	Kit	Repairs and replaces U5MB0008A (A) Thickness (-)0.50MM Thickness (-)0.020
3	U5MB0008C	X	Kit	(A) Thickness (-)0.75MM Thickness (-)0.030
4	31137211	2	Washer	(1)
	31137212	X	Washer	Thickness (+)0.19MM Thickness (+)0.0075
5	31137221	2	Washer	(1)
	31137222	X	Washer	Thickness (+)0.19MM Thickness (+)0.0075
6	U5ME0005	1	Kit	(1) (A)
6	U5ME0005A	X	Kit	(A) Thickness (-)0.25MM Thickness (-)0.010
6	U5ME0005B	X	Kit	(A) Thickness (-)0.50MM Thickness (-)0.020
6	U5ME0005C	X	Kit	(A) Thickness (-)0.75MM Thickness (-)0.030
7	ZZ90010	1	Conrod	
8		1	Conrod	(7) Not serviced, order REF.7
9		1	Support	(7) Not serviced, order REF.7
10	31134151	1	Thimble	(7)
11	0095250	2	Screw	(7)
12	33221327	2	Nut	(7)
13	U5LP0029	3	Piston	(B)
	U5LU0023	3	Piston	(C)
14		1	Piston	(13) Not serviced, order REF.13
15		1	Pin	(13) Not serviced, order REF.13
16	2721A022	1	Ring	(13)
17	2721A022	1	Ring	(13)
18	4181A017	3	Kit	
19	31147788	1	Pulley	
20	32162312	1	Screw	
21	33125112	1	Washer	
22	33176137	1	Spacer	
23	0410132	1	Gear	Number of teeth/spines 25
24	36271704	1	Key	
25	33125151	1	Spacer	
26	31328242	2	Weight	
27	2185189	2	Screw	
28	31731515	2	Plate	Right Hand
29	2185189	2	Screw	
30	31731516	2	Plate	Left Hand
31	3552228M1	1	Crownwheel	Number of teeth/spines 115
32	33117127	6	Washer	

(A)
PRE-FINISHED

(B)

MASSEY FERGUSON

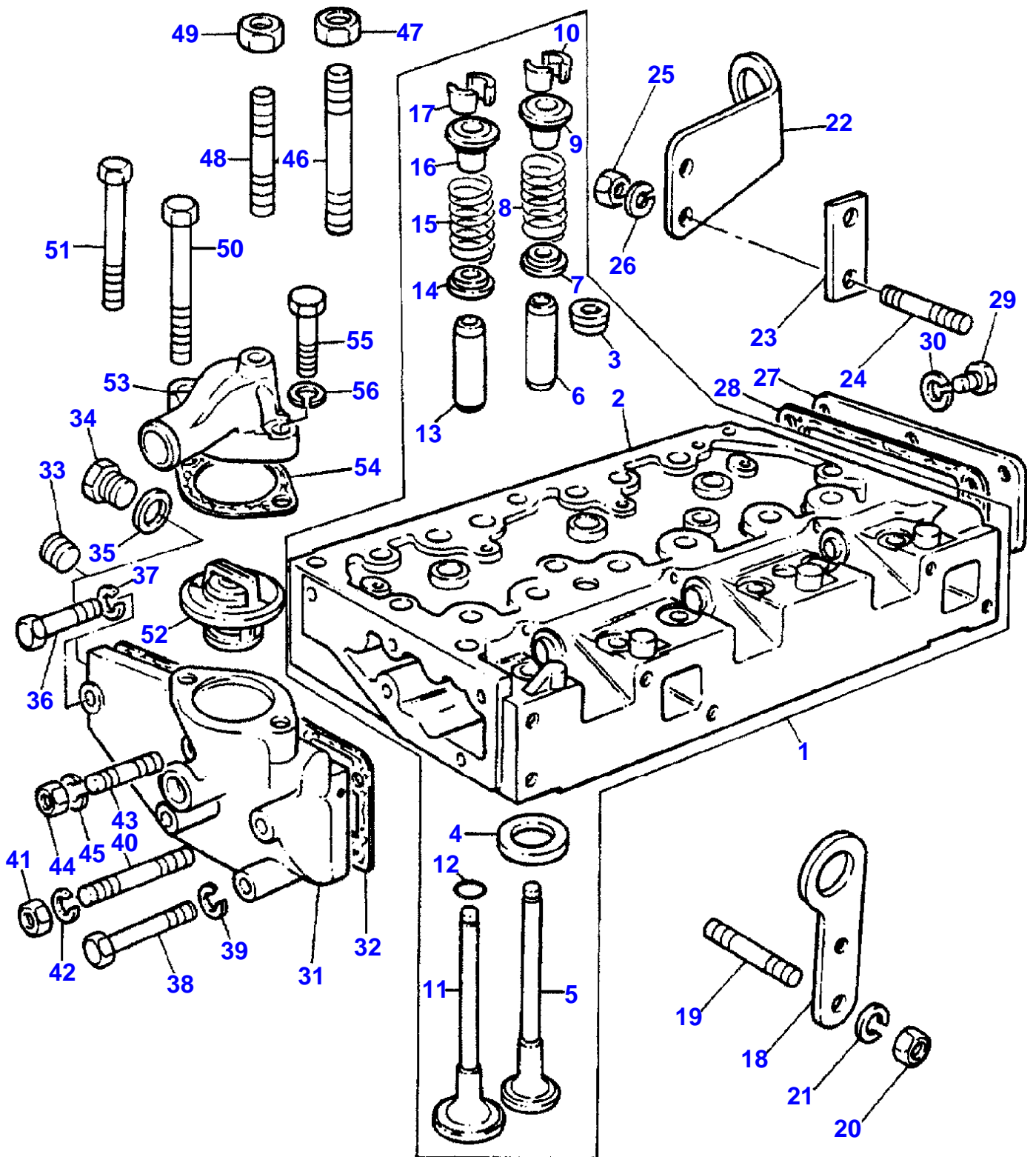
MF 364 F TRACTOR - 3311556

3311556

CRANKSHAFT, PISTONS AND CONNECTING RODS - T3.152.4 ENGINE

7

Item	Part Number	Qty	Description	Comments
				UNTOPPED
				(C)
				PRE-TOPPED



MASSEY FERGUSON

MF 364 F TRACTOR - 3311556

3311556

CYLINDER HEAD - T3.152.4 ENGINE

10

Item	Part Number	Qty	Description	Comments
				T3.152.4 ENGINE
1	ZZ 80113	1	Cylinder Head	
2		1		(1) Not serviced, order REF.1
3	2431154	2	Plug	(1)
4	3314A005	3	Insert	(1)
5	3142A081	3	Valve	(1)
6	3313E011	3	Guide	(1)
7	33415133	3		(1)
8	0780006	3	Spring	(1)
9	33423148	3	Cap	(1)
10	0230001	6	Spring	(1) (A)
11	31431121	3	Valve	(1)
12	2415258	3		(1)
13	3313E011	3	Guide	(1)
14	33177518	3	Washer	(1)
15	0780006	3	Spring	(1)
16	33423148	3	Cap	(1)
17	0230001	6	Spring	(1) (A)
18	3624V004	1	Plate	
19	32521111	2	Stud	
20	2188135	2	Nut	
21		2		(B)
22	3645T003	1	Plate	
23	3611E003	1	Spacer	
24	2216165	2	Stud	
25	0576051	2	Nut	
26	0920054	2	Lock Washer	
27	3612M002	1	Cover	
28	0490485	1		
29	0746254	6	Screw	
30	0920053	6	Washer	
31	3771K072	1	Body	Repairs and replaces 3771K071
32	3685A004	1		
33	2431A054	1	Plug	
34	0650203	1	Plug	
35	2411157	1	Washer	
36	0096213	2	Screw	
37	0920053	2	Washer	
38	0096442	1	Screw	
39	0920054	1	Lock Washer	
40	2215179	1	Stud	
41	0576051	1	Nut	
42	0920054	1	Lock Washer	
43	2217072	1	Screw	
44	0576002	1	Nut	
45	0920053	1	Washer	
46	32524132	1	Stud	
47	33221329	1	Nut	
48	32524148	3	Stud	
49	33221329	3	Nut	
50	32181457	5	Screw	
51	32181458	9	Screw	
52	2485613	1	Thermostat	
53	3764A041	1	Connection	
54	0490184	1		
55	0096433	2	Screw	
56	0920054	2	Lock Washer	

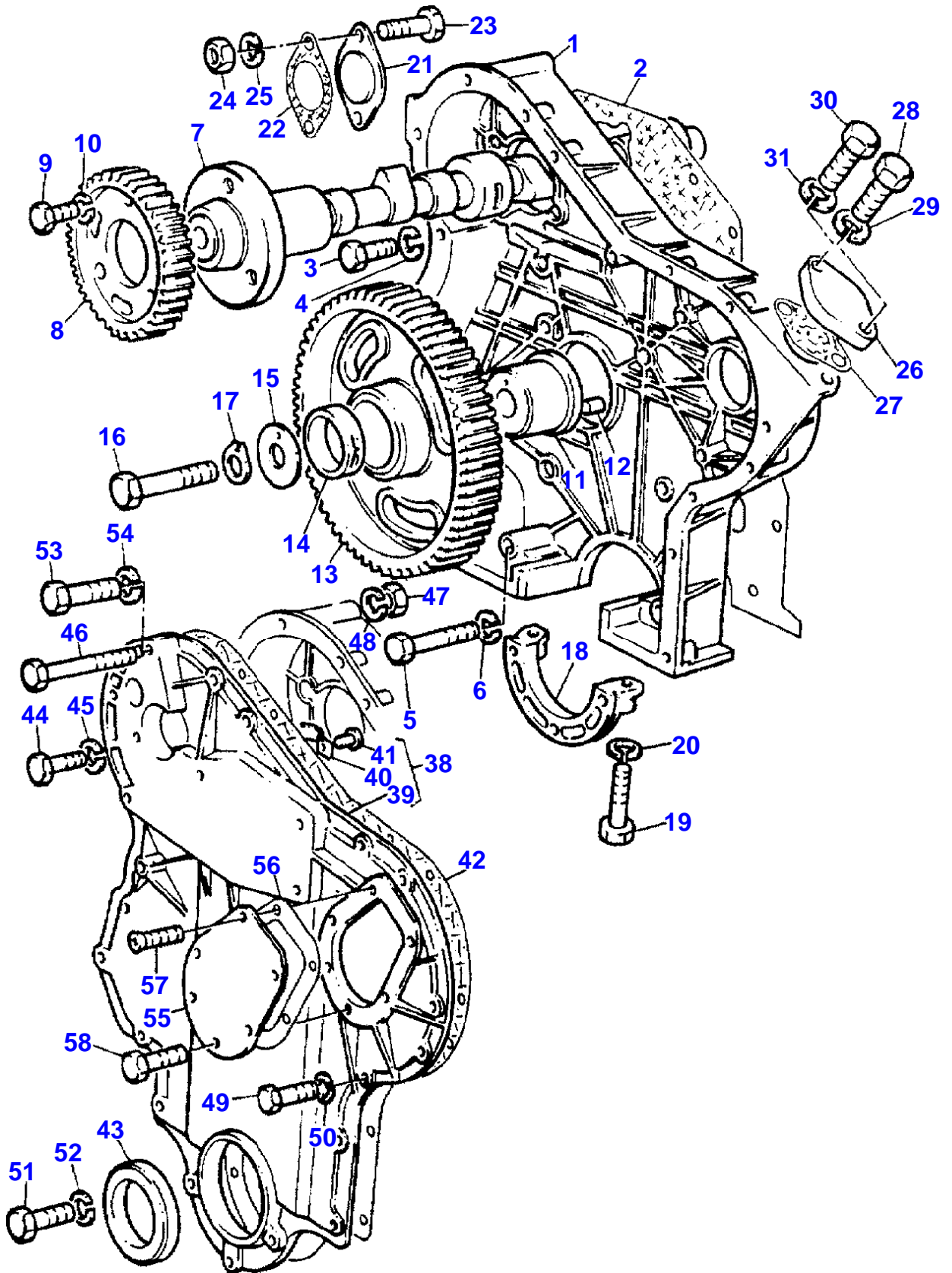
(A)
SERVICED IN PAIRS

(B)
NOT REQUIRED FOR THIS APPLICATION

Item	Part Number	Qty	Description	Comments
				T3.152.4 ENGINE
1	4115R805	1	Shaft	Repairs and replaces 4115R803
2	ZZ90047	1	Shaft	Repairs and replaces 41151306 (1)
3		1		Repairs and replaces U7LR0002 (2) Not serviced, order REF.2
4	0650507	2	Plug	(2)
5	0170033	1	Ring	(1)
6	0101138	1	Support	(1)
7	3737A091	1	Lever	(1) Right Hand Repairs and replaces 3737A081 Repairs and replaces 3737A041
8	0780005	1	Spring	(1)
9	3737A091	1	Lever	(1) Right Hand Repairs and replaces 3737A081 Repairs and replaces 3737A041
10	0330505	1	Shim	(1)
11	37521212	1	Support	(1)
12	2112A066	1	Pin	(1)
13	0330505	1	Shim	(1)
14	3737A101	1	Lever	(1) Left Hand Repairs and replaces 3737A071 Repairs and replaces 3737A031
15	0780175	1	Spring	(1)
16	35568352	1	Pipe	(1)
17	3737A091	1	Lever	(1) Right Hand Repairs and replaces 3737A081 Repairs and replaces 3737A041
18	0330505	1	Shim	(1)
19	0101138	1	Support	(1)
20	0330505	1	Shim	(1)
21	3737A101	1	Lever	(1) Left Hand Repairs and replaces 3737A071 Repairs and replaces 3737A031
22	0780005	1	Spring	(1)
23	3737A101	1	Lever	(1) Left Hand Repairs and replaces 3737A071 Repairs and replaces 3737A031
24	0101138	1	Support	(1)
25	0170033	1	Ring	(1)
26	0860012	6	Tappet	
27	32151116	6	Screw	Repairs and replaces 0720677
28	0576052	6	Nut	
29	2214209	2	Stud	
30	2211283	2	Nut	
31	0920004	2	Washer	
32	32754435	2	Stud	
33	2211283	2	Nut	
34	0920004	2	Washer	
35	0206002	1	Union	
36	37188197	1	Cover	
37		1		(36) Not serviced, order REF.36
38	2487854	1	Plug	(36)
39		1		(38) Not serviced, order REF.38
40	24870001	1		(38)
41	36811115	1		

ROCKER SHAFT - T3.152.4 ENGINE

Item	Part Number	Qty	Description	Comments
42	0576102	2	Nut	
43	3314P004	2	Washer	
44	3381A003	2	O Ring	
45	33872516	1	Pipe	
46	31754118	1	Spring	
47	21825195	1	Clamp	Repairs and replaces 0180063
48	36561129	1	Clamp	
49	0748354	1	Screw	
50	0920002	1	Washer	
51	0920052	1	Washer	
52	36561129	1	Clamp	
53	2217570	1	Screw	
54	353916X1	1	Nut	
55	0920053	1	Washer	

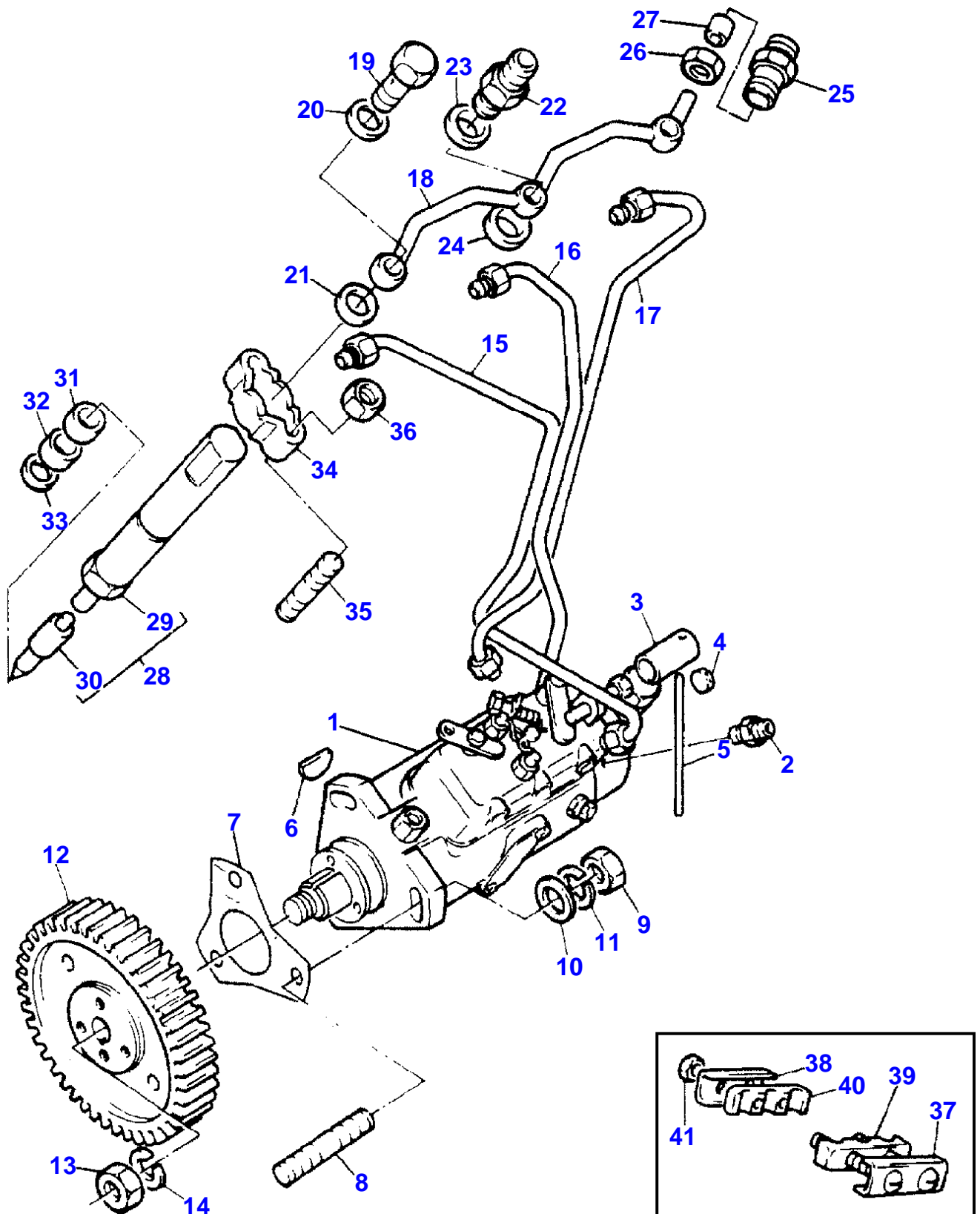


TIMING GEAR AND CAMSHAFT - T3.152.4 ENGINE

Item	Part Number	Qty	Description	Comments
T3.152.4 ENGINE				
1	37161482	1	Cover	
2	36814113	1		Repairs and replaces 36814119
3	0746355	12	Screw	
4	0920053	12	Washer	
5	0096234	2	Screw	
6	0920053	2	Washer	
7	31415264	1	Shaft	
8	31164131	1	Gear	Number of teeth/spines 50
9	0746214	3	Screw	
10	0920053	3	Washer	
11	0995447	1	Hub	
12	0350005	1	Dowel	
13	31164362	1	Gear	(B) Number of teeth/spines 90
13	4111A015	1	Gear	From Serial or Engine Number 90
14	2511A735	1	Bush	(A)
15	0940738	1		
16	0095199	1	Screw	
17	0920883	1	Washer	
18	37354312	1	Cover	
19	0746259	2	Screw	
20	0920053	2	Washer	
21	37461104	1	Cover	
22	36835413	1		
23	0748510	2	Screw	
24	2238153	2	Nut	
25	0920054	2	Lock Washer	
26	36172128	1	Plate	
27	36837413	1		
28	2183204	1	Screw	
29	0920053	1	Washer	
30	2183204	1	Screw	
31	0920053	1	Washer	
38	ZZ90039	1		Repairs and replaces A5FH0245
39		1		(38) Not serviced, order REF .38
40	3661P002	1	Spring	(38)
41	2126151	1	Rivet	(38)
42	36813136	1		
43	2415344	1		
44	0748414	2	Screw	
45	0920053	2	Washer	
46	0096213	1	Screw	
47	353916X1	2	Nut	
48	0920053	2	Washer	
49	0748354	8	Screw	
50	0920052	8	Washer	
51	2233207	3	Screw	
52	0920053	3	Washer	
53	0096240	1	Screw	
54	0920053	1	Washer	
55	36234114	1	Cover	Repairs and replaces 3623H005
56	36862512	1		
57	2233103	5	Screw	Repairs and replaces 2227117
58	2233104	1	Screw	See Page - Reference Number 31/ 17
59	0920052	5	Washer	From Serial or Engine Number

(A)
NOT FITTED ON THIS APPLICATION

(B)
FOR ENGINES BUILT TO BUILD LIST CN31198 (3553117M9 1).



Item	Part Number	Qty	Description	Comments
				T3.152.4 ENGINE
1	2643B132	1	Pump	
2	28730179	1	Solenoid	
3	3281M002	1	Sleeve	Repairs and replaces 2644951
4	31718104	1	Sealer	
5	31718105	1	Wire	
6	26430809	1	Key	
7	3687H012	1		Repairs and replaces 33828108
8	2217575	3	Screw	
9	353916X1	3	Nut	
10	390972X1	3	Washer	
11	0920053	3	Washer	
12	3116K072	1	Gear	(B) Number of teeth/spines 50
12	3116K081	1	Gear	Number of teeth/spines 50
13	26431262	1	Nut	
14	26430506	1	Washer	
15	3521E022	1	Pipe	NO.1 CYL. Repairs and replaces 3521E004
16	3521E023	1	Pipe	NO.2 CYL. Repairs and replaces 3521E005
17	3521E024	1	Pipe	NO.3 CYL. Repairs and replaces 3521E006
18	3558X007	1	Pipe	
19	0095315	2	Filler	
20	0920107	2	Washer	
21	0920107	2	Washer	
22	0201526	1	Union	
23	0920107	1	Washer	
24	0920107	1	Washer	
25	0206102	1	Union	
26	33225412	1	Nut	
27	33811112	1	Spinner	
28	2645A013	3	Atomiser	
29	2645A301	1	Support	(28)
30	2645K603	1	Nozzle	(28)
31	33813126	3	Spacer	
32	33813127	3	Ring	
33	0921173	3	Washer	
34	3662K002	3	Clamp	Repairs and replaces 3666V002 Repairs and replaces 3666V003
35	2216108	6	Screw	
36	353916X1	6	Nut	
37	38631117	1	Support	
38	36511127	1	Plate	
39	36845115	1	Pad	
40	36845115	1	Pad	
41	2211401	2	Nut	

(A)
NOT FITTED ON THIS APPLICATION

(B)
FOR ENGINES BUILT TO BUILD LIST CN31198 (3553117M9 1).



Suggest:

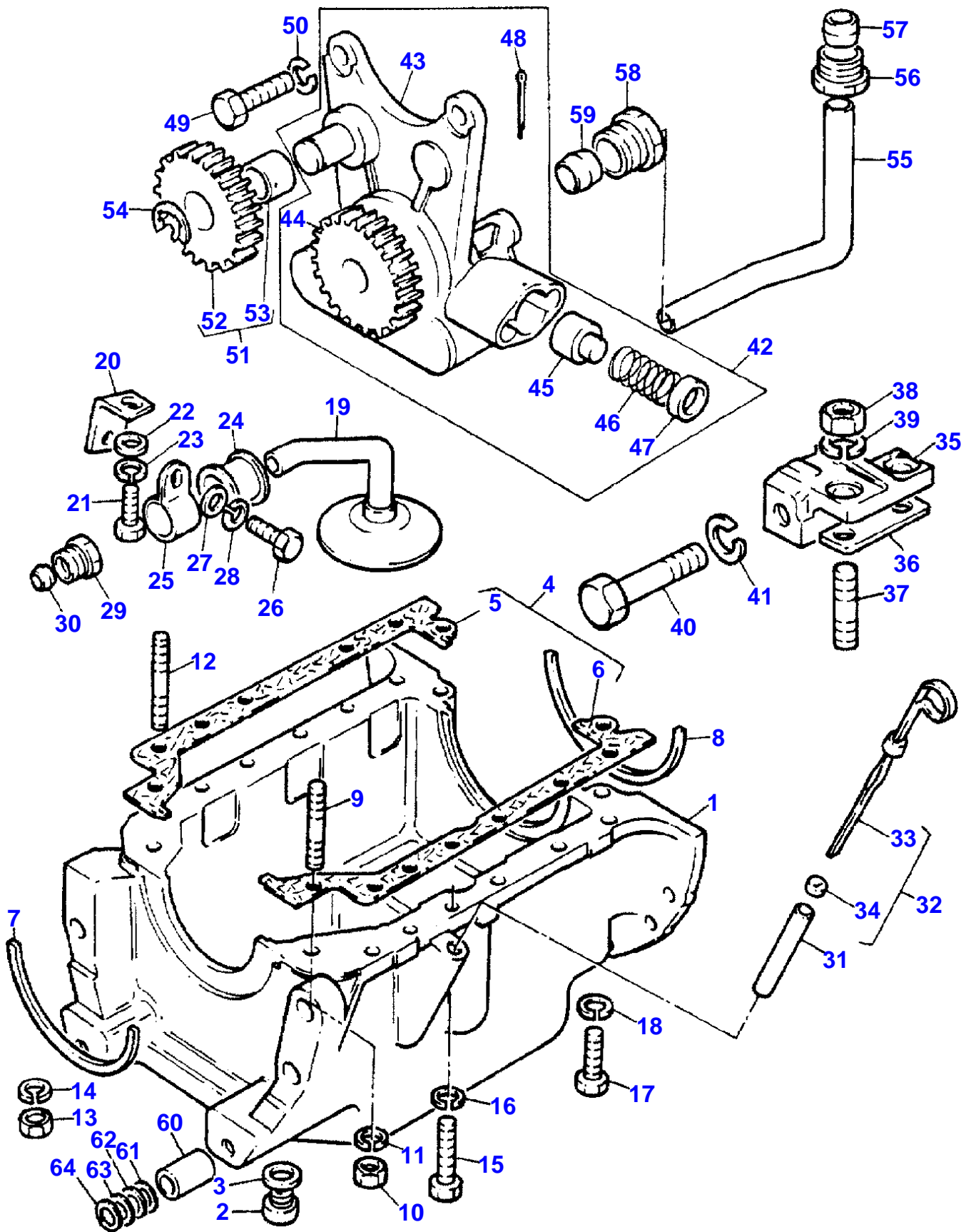
If the above button click is invalid.

Please download this document

first, and then click the above link

to download the complete manual.

Thank you so much for reading



<https://www.ebooklibonline.com>

Hello dear friend!

Thank you very much for reading.

Enter the link into your browser.

The full manual is available for immediate download.

<https://www.ebooklibonline.com>