

Page Title	Page Number
ENGINE - AD3.152 ENGINE	1
SHORT ENGINE- . - TABLE PK ACEC9106- .	2
CYLINDER BLOCK - AD3.152 ENGINE	3
CRANKSHAFT, PISTONS AND CONNECTING RODS - AD3.152 ENGINE	6
CYLINDER HEAD - AD3.152 ENGINE	8
ROCKER SHAFT - AD3.152 ENGINE	11
TIMING GEAR AND CAMSHAFT - AD3.152 ENGINE	13
FUEL INJECTION EQUIPMENT (DIESEL) - AD3.152 ENGINE	16
LUBRICATING OIL SUMP - AD3.152 ENGINE	18
LUBRICATING OIL FILTER AND INTEGRAL COOLER - AD3.152 ENGINE	22
WATER PUMP, THERMOSTAT AND HEAT EXCHANGER - AD3.152 ENGINE	23
LOW PRESSURE FUEL SYSTEM - AD3.152 ENGINE	25
AIR INDUCTION AND EXHAUST SYSTEM - AD3.152 ENGINE	26
ALTERNATOR POSITIONER - AD3.152 ENGINE	27
JOINTS AND GASKETS - AD3.152 ENGINE	28
HEATER - COLD CLIMATE	29
ALTERNATOR - ISKRA TYPE- .	30
ALTERNATOR - VALEO TYPE	32
ALTERNATOR-LUCAS - LUCAS- .	34
STARTER MOTOR - UP TO SERIAL NUMBER R35158- .	36
STARTER MOTOR - ISKRA TYPE- .	37
STARTER MOTOR - FROM SERIAL NO. R35159- .	39
STARTER MOTOR - FROM SERIAL NO. S12087- .	41
COOLING SYSTEM-ENGINE - FAN AND HOSES	42
EXHAUST SYSTEM-HORIZONTAL	43
EXHAUST SYSTEM-VERTICAL	45
AIR FILTER-DRY - DUAL ELEMENT - DRY AIR CLEANER- .	46
FUEL SYSTEM-FUEL TANK AND ATTACHMENTS	48
FUEL SYSTEM-FUEL FILTER	50
COOLING SYSTEM - RADIATOR AND BRACKET- .	52
THROTTLE CONTROLS	55
INSTRUMENT PANEL AND INSTRUMENTS	57
INSTRUMENT PANEL AND INSTRUMENTS	61
ELECTRICAL WIRING	62
ELECTRONIC HARNESS-INSTRUMENT PANEL	67
SENSORS HARNESS	68
LIGHTING EQUIPMENT-REAR	69
ELECTRICAL WIRING-TRACTOR CAB	70
LIGHTING EQUIPMENT	71
LIGHTING EQUIPMENT	76
BATTERY	77
CLUTCH-DUAL CLUTCH - LUK 11- - UP TO SERIAL NUMBER P50186- .	79
CLUTCH-DUAL CLUTCH - OMG 11- - UP TO SERIAL NUMBER P50186- .	81
CLUTCH-DUAL CLUTCH - O.M.G. FROM SERIAL N.P50187- .	83
CLUTCH-DUAL CLUTCH - LUK 11" FROM SERIAL N.P50187- .	85
CLUTCH PEDAL AND LINKAGE	87
CENTRE AXLE HOUSING AND TRANSMISSION HOUSING	90
CENTRE AXLE HOUSING AND TRANSMISSION HOUSING	91
12 SPEED TRANSMISSION - STANDARD VERSION	93
12 SPEED TRANSMISSION - STANDARD VERSION	96
SHIFT LEVERS-12 SPEED TRANSMISSION	99
SHIFT LEVERS-12 SPEED TRANSMISSION	101
GEAR BOX - FOR SHUTTLE VERSION ONLY.	103
REDUCER - FOR SHUTTLE VERSION ONLY.	104
REDUCER CONTROL - OVERDRIVE AND SHUTTLE VERSION	107
REDUCER - OVERDRIVE AND SHUTTLE VERSION	109
REDUCER CONTROL - OVERDRIVE AND UNDERDRIVE VERSION	113
REDUCER - OVERDRIVE AND UNDERDRIVE VERSION	115
REDUCER CONTROL - OVERDRIVE AND CREEPER VERSION	119
REDUCER - OVERDRIVE AND CREEPER VERSION	121
REDUCER CONTROL - UNDERDRIVE AND SHUTTLE VERSION	124
REDUCER - UNDERDRIVE AND SHUTTLE VERSION	125
REDUCER CONTROL - UNDERDRIVE E CREEPER VERSION	129
REDUCER - UNDERDRIVE E CREEPER VERSION	130
REDUCER CONTROL - SHUTTLE AND CREEPER VERSION	133
REDUCER - SHUTTLE AND CREEPER VERSION	134

TABLE OF CONTENT

PTO SHAFT - 540 R.P.M.- .	137
PTO SHAFT - 540 R.P.M.- .	139
PTO SHAFT - 540/750/1000 R.P.M.- .	141
PTO SHAFT - 540/750/1000 R.P.M.- .	144
PTO-CONTROL - 540 R.P.M.- .	146
PTO-CONTROL - 540/750/1000 R.P.M.- .	147
TRANSFER GEAR BOX-4 WHEEL DRIVE	149
4 WHEEL DRIVE CONTROLS	151
REAR AXLE-DIFFERENTIAL	152
REAR AXLE-HOUSING	154
REAR AXLE-DIFFERENTIAL LOCK MECHANISM - MECHANICAL CONTROL- .	157
BRAKE AND CONTROLS	158
BRAKE AND CONTROLS	160
BRAKES-HANDBRAKE	162
BRAKE CYLINDER	164
BRAKES-MASTER CYLINDER	166
REAR WHEELS	167
FRONT WHEELS	170
FRONT AXLE 2 WHEEL DRIVE-AXLE SUPPORT	173
FRONT AXLE 4 WHEEL DRIVE-DIFFERENTIAL	176
FRONT AXLE 4 WHEEL DRIVE-DIFFERENTIAL	179
FRONT AXLE 4 WHEEL DRIVE-FINAL DRIVE	181
FRONT AXLE 4 WHEEL DRIVE-DIFFERENTIAL	183
FRONT AXLE 4 WHEEL DRIVE-DIFFERENTIAL	186
FRONT AXLE 4 WHEEL DRIVE-FINAL DRIVE	189
STEERING ORBITROL UNIT - 2 WHEEL DRIVE	192
STEERING ORBITROL UNIT - 4 WHEELS DRIVE	194
STEERING HYDRAULIC LINES	196
STEERING HYDRAULIC LINES	198
STEERING CYLINDER-4 WHEEL DRIVE	201
STEERING CYLINDER-4 WHEEL DRIVE	202
STEERING CYLINDER-2 WHEEL DRIVE	203
STEERING-STEERING PUMP - UP TO SERIAL NUMBER R31000- .	205
STEERING-STEERING PUMP - FROM SERIAL NO- R31001.	206
HYDRAULIC LIFT PIPINGS - STANDARD VERSION	207
HYDRAULIC LIFT PIPINGS	209
HYDRAULIC LIFT PIPINGS - SINGLE HYDRAULIC LINES	212
HYDRAULIC PUMP - BOSCH	214
HYDRAULIC PUMP - TUROLLA	215
HYDRAULIC PUMP - CESSNA	216
HYDRAULIC LIFT VALVE	218
HYDRAULIC LIFT-LIFT ARMS	220
HYDRAULIC LIFT-LIFT ARMS	222
REAR CONTROLS-DRAFT AND POSITION	224
REAR CONTROLS-DRAFT AND POSITION	227
HYDRAULIC LIFT CYLINDER - HYDRAULIC LIFT CYLINDER,WITH 1'AND 2'AUXIL.HYDRAUL .VAL	229
AUXILIARY HYDRAULIC VALVE LINES - TILL TYPE	231
AUXILIARY HYDRAULIC VALVE LINES - TILL TYPE	234
AUXILIARY HYDRAULIC VALVE LINES - WITH AUXILIARY HYDRAULIC VALVE CLEARANCE- .	237
AUXILIARY HYDRAULIC VALVE LINES - WITH AUXILIARY HYDRAULIC VALVE CLEARANCE- .	238
AUXILIARY HYDRAULICS VALVE - TILL TYPE STANDARD- .	239
AUXILIARY HYDRAULICS VALVE - TILL TYPE FLOATING- .	241
AUXILIARY HYDRAULIC VALVE LINES- HIDROIRMA - HIDROIRMA TYPE FROM SERIAL N.B08001- .	243
AUXILIARY HYDRAULIC VALVE LINES- HIDROIRMA - HIDROIRMA TYPE FROM SERIAL N.B08001- .	245
AUXILIARY HYDRAULIC VALVE LINES- HIDROIRMA - HIDROIRMA TYPE FROM SERIAL N.B08001- .	246
LINKAGETOP LINK - HIDROIRMA TYPE FROM SERIAL N.B08001- .	248
PLATFORM AUTOMATIC HITCHWITH REMOTE CONTROL - HIDROIRMA TYPE FROM SERIAL N.B08001- .	249
CONTROL VALVE-VALVE - HIDROIRMA TYPE FROM SERIAL N.B08001- .	250
ACCESSORIES HYDRAULIC - ADDITIONAL POWER OUTLET UNIT	251
LINKAGE CAT 2 - UP TP SERIAL NUMBER- .	252
LINKAGE CAT 2 - UP TP SERIAL NUMBER- .	255
LINKAGE CAT 2	258
LINKAGE CAT 2	261
LINKAGE-LINK END	264
SHEET METAL-GRILLE	265
SHEET METAL-HOOD	266
SHEET METAL-PANELS	268
DECALS	269

TABLE OF CONTENT		00
DECALS	272	
DECALS	276	
FENDERS - FRONT - 2WHEEL DRIVE	278	
FENDERS - FRONT - 4 WHEEL DRIVE	279	
FENDERS AND PLATFORM	281	
SAFETY FRAME	286	
ROTATING LIGHT	287	
SEAT-GRAMMER	289	
TRACTOR CAB-FRAME	292	
TRACTOR CAB-ROOF	295	
TRACTOR CAB-CAB DOOR	298	
TRACTOR CAB-WINDOWS - FRONT- .	300	
TRACTOR CAB-WINDOWS - REAR	302	
TRACTOR CAB-CAB INSULATION	305	
TRACTOR CAB-CAB INSULATION	306	
TRACTOR CAB-ELECTRICAL EQUIPMENT	308	
TRACTOR CAB-CAB INSULATION	309	
TRAILER BRAKES-PIPES AND FITTINGS	311	
WEIGHT FRAME AND WEIGHTS	313	
REAR HOOK-ADJUSTABLE	314	
DRAWBAR	315	
DRAWBAR	316	
REAR HOOK-ADJUSTABLE - STANDARD	317	
TOOL KIT	318	

**<https://www.ebooklibonline.com>**

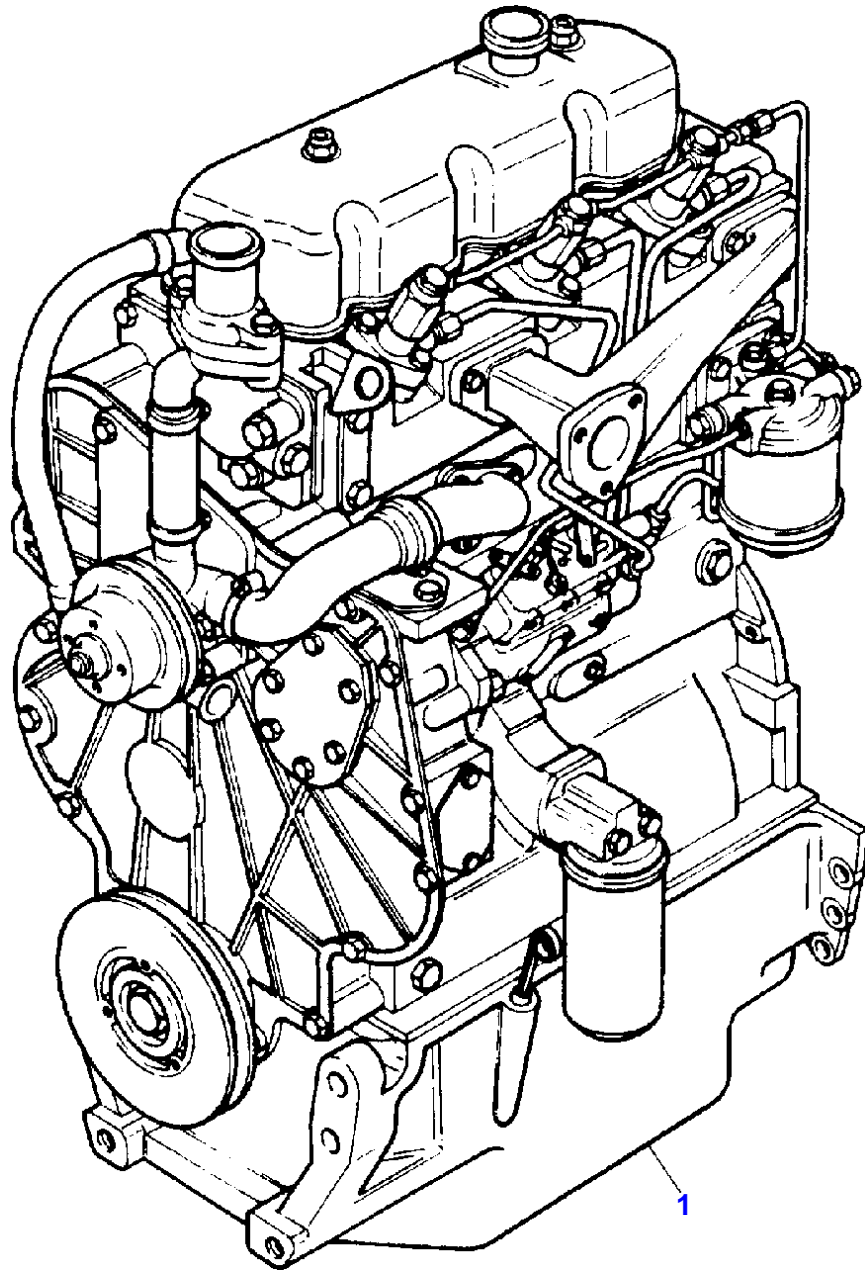
Hello dear friend!

Thank you very much for reading.

Enter the link into your browser.

The full manual is available for immediate download.

**<https://www.ebooklibonline.com>**



MASSEY FERGUSON

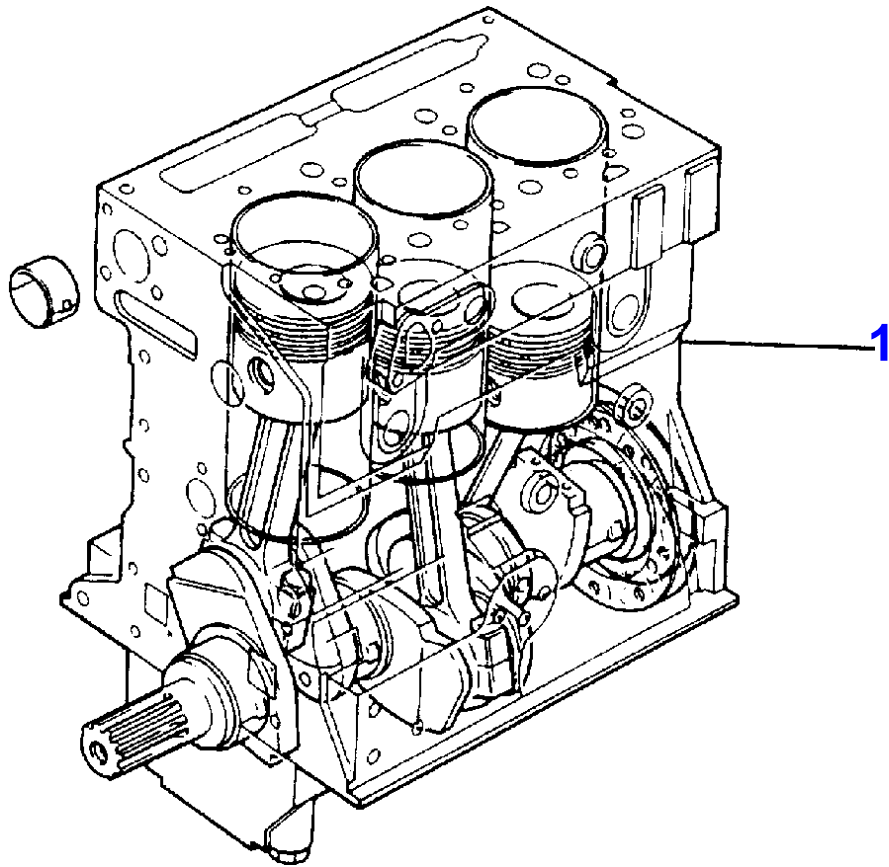
MF 354 F TRACTOR - 3311555

3311555

ENGINE - AD3.152 ENGINE

1

Item	Part Number	Qty	Description	Comments
				AD3.152 ENGINE
1	3553118M91	X	Engine	(A) Repairs and replaces CE31197
1	3553128M91	X	Engine	(B) Repairs and replaces CE31212
				(A) SINGLE STANDARD LINES
				(B) SINGLE HYDRAULIC LINES



MASSEY FERGUSON

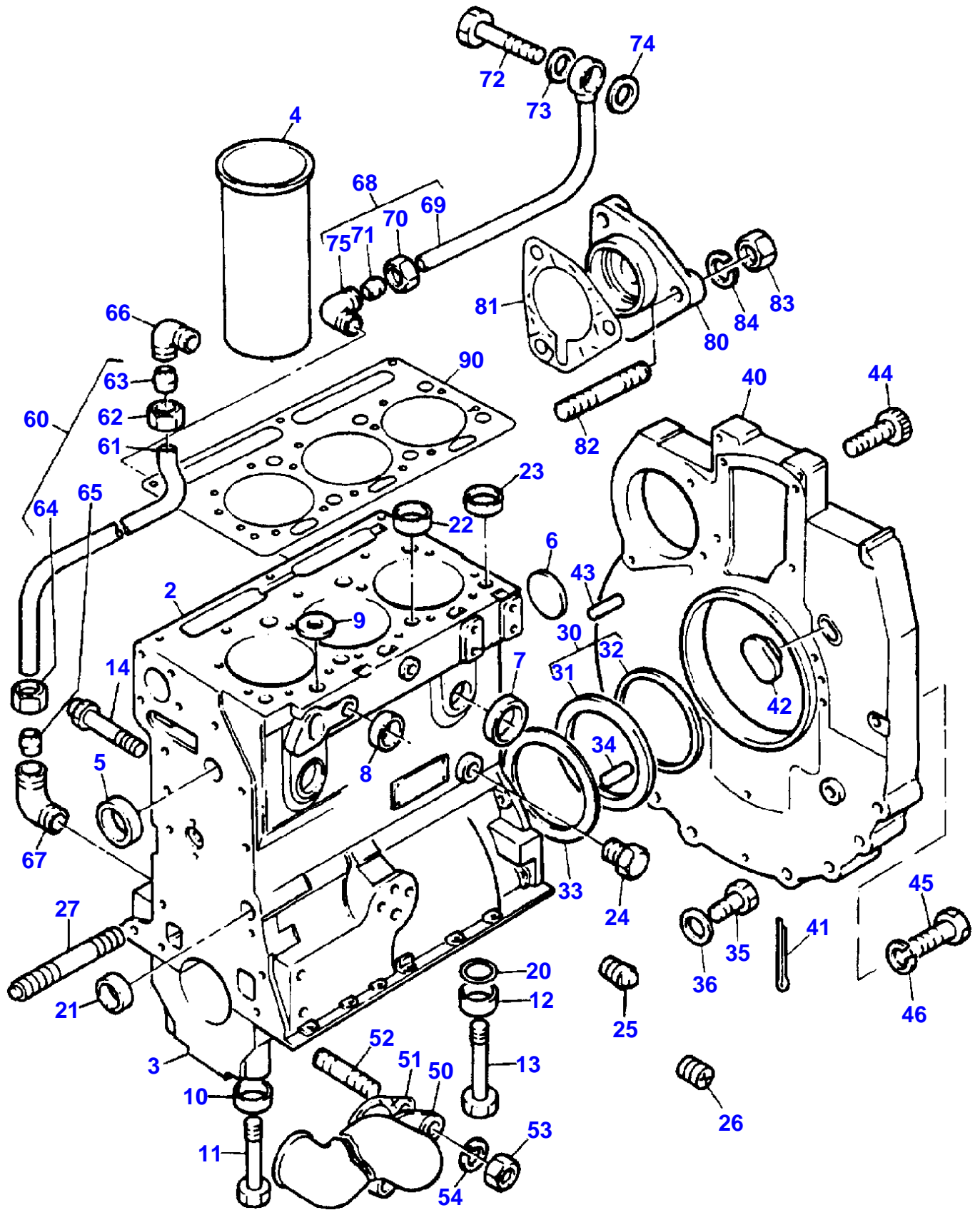
MF 354 F TRACTOR - 3311555

3311555

SHORT ENGINE- . - TABLE PK ACEC9106- .

2

Item	Part Number	Qty	Description	Comments
				TABLE PK ACEC9106- .
1	CE39124	1	Engine	(A) Repairs and replaces 39116
2		1	Cylinder Block	(1) (B)
2		3	Liner	(1)
		1	Crankshaft	(1)
		2	Weight	(1)
		1	Bearing	(1)
		3	Piston	(1)
		3	Segment	(1)
		3	Conrod	(1)
		1	Bearing	(1)
		4	Washer	(1)
		1		(1)
		1	Housing	(1)
				(A) LIP SEAL
				(B) COMPLETE WITH PLUGS



MASSEY FERGUSON

MF 354 F TRACTOR - 3311555

3311555

CYLINDER BLOCK - AD3.152 ENGINE

3

Item	Part Number	Qty	Description	Comments
				AD3.152 ENGINE
1	ZZ 50206	1	Block	Repairs and replaces ZZ50172
2		1	Housing	Repairs and replaces ZZ50119 (1) Not serviced, order REF.1
3		4	Support	(1) Not serviced, order REF.1
4	31358356	3	Liner	(1) (A)
4	31358358	X	Liner	(1) Thickness (+)0.76MM Thickness (+)0.030
5	0650710	1	Plug	(1)
6	0650692	1	Plug	(1)
7	0650710	4	Plug	Repairs and replaces 0650664 (1)
8	32417163	2	Plug	Repairs and replaces 0650563 (1)
9	33141124	1	Plug	Repairs and replaces 32417115 (1)
10	33137408	6	Bush	(1)
11	32181441	6	Screw	(1)
12	33137408	2	Bush	(1)
13	32181442	2	Screw	(1)
14	2485A204	1	Plug	(1)
20	2415608	2	Ring	
21	0650566	2	Plug	
22	33157142	2	Plug	
23	33157143	2	Plug	
24	32161114	1	Plug	
25	0650594	1	Plug	
26	32114472	2	Plug	
27	32537404	1	Stud	
30	4142V002	1	Ring	
31		1	Ring	(30) Not serviced, order REF.30
32	2418F475	1		(30)
33	33826111	1		
34	0350015	2	Pin	
35	2183205	9	Screw	
36	390972X1	9	Washer	
40	37147975	1	Plate	
41	0610045	1	Linch Pin	
42	37813113	1	Plug	
43	0350016	2		
44	0720798	2	Screw	
45	0746454	6	Screw	
46	0920054	6	Lock Washer	
50	3765T011	1	Union	
51	0490486	1		
52	2217072	2	Screw	
53	353916X1	2	Nut	
54	0920053	2	Washer	
60	35352404	1	Pipe	
61		1	Pipe	(60) Not serviced, order REF.60
62	0576111	1	Nut	(60)
63	0566002	1	Olive	(60)
64	0576111	1	Nut	(60)
65	0566002	1	Olive	(60)
66	0201047	1	Union	
67	0201047	1	Union	
68	35568109	1	Pipe	

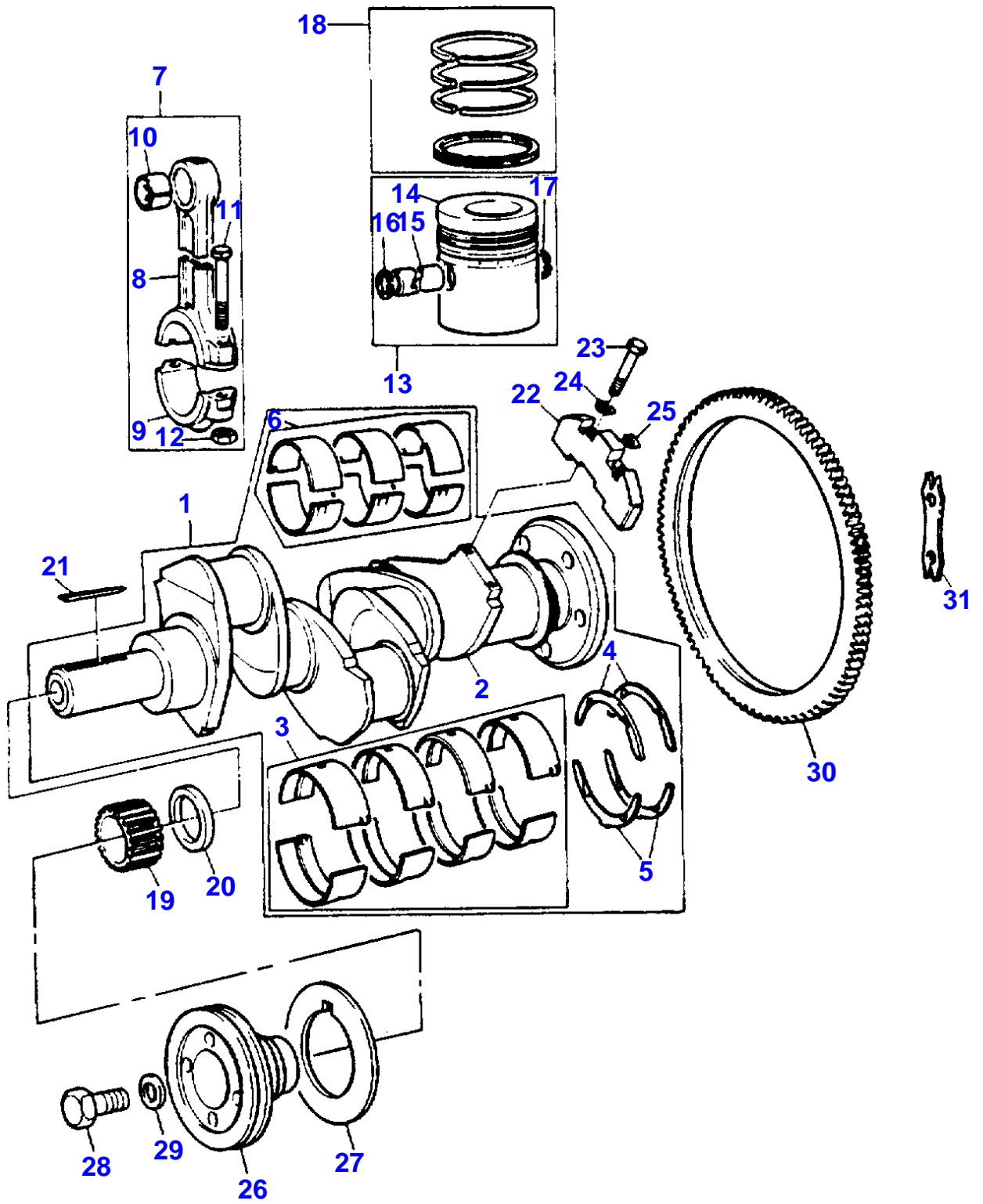
**MASSEY FERGUSON****MF 354 F TRACTOR - 3311555**

3311555

**CYLINDER BLOCK - AD3.152 ENGINE**

3

Item	Part Number	Qty	Description	Comments
69		1	Pipe	(68) Not serviced, order REF.68
70	0576111	1	Nut	(68)
71	0566002	1	Olive	(68)
72	0095350	1	Union	
73	0920126	1	Ring	
74	0920126	1	Ring	
75	0201047	1	Union	
80	37556191	1	Cover	Repairs and replaces 37416753
81	36862605	1		
82	0826201	3	Stud	
83	353916X1	3	Nut	
84	0920053	3	Washer	
90	3681E024	1		Repairs and replaces 3681E006/15  (A) PRESS FIT PARALLEL LINER.



Item	Part Number	Qty	Description	Comments
				AD3.152 ENGINE
1	ZZ90150	1	Crankshaft	Repairs and replaces ZZ90078/122 Repairs and replaces U5BG0027 Repairs and replaces ZZ90019
2		1	Shaft	(1) Not serviced, order REF.1
3	68084	X	Bearing	(A)
	68084A	X	Kit	(A) Thickness (-)0.25MM Thickness (-)0.010
3	68084B	X	Kit	(A) Thickness (-)0.50MM Thickness (-)0.020
3	68084C	X	Kit	(A) Thickness (-)0.75MM Thickness (-)0.030
4	31137211	2	Washer	(1)
	31137212	X	Washer	Thickness (+)0.19MM Thickness (+)0.0075
5	31137221	2	Washer	(1)
	31137222	X	Washer	Thickness (+)0.19MM Thickness (+)0.0075
6	85036	1	Bearing	(1) (A)
6	85036A	X	Bearing	(A) Thickness (-)0.25MM Thickness (-)0.010
6	85036B	X	Bearing	(A) Thickness (-)0.50MM Thickness (-)0.020
6	85036C	X	Bearing	(A) Thickness (-)0.75MM Thickness (-)0.030
7	ZZ90010	1	Conrod	
8		1	Conrod	(7) Not serviced, order REF.7
9		1	Support	(7) Not serviced, order REF.7
10	31134151	1	Thimble	(7)
11	0095250	2	Screw	(7)
12	33221327	2	Nut	(7)
13	68302	3	Piston	(B)
	89214	3	Piston	(C)
14		1	Piston	(13) Not serviced, order REF.13
15		1	Pin	(13) Not serviced, order REF.13
16	0170001	1	Ring	(13)
17	0170001	1	Ring	(13)
18	41158065	3	Kit	
19	0410132	1	Gear	Number of teeth/spines 25
20	33125151	1	Spacer	
21	36271704	1	Key	
22	31328242	2	Weight	
23	2185189	4	Screw	
24	31731515	2	Plate	
25	31731516	2	Plate	
26	31147788	1	Pulley	
27	33176137	1	Spacer	
28	32162312	1	Screw	
29	33125112	1	Washer	
30	3552228M1	1	Crownwheel	Number of teeth/spines 115
31	0921062	3	Plate	

(A)  
PRE-FINISHED

(B)

MASSEY FERGUSON

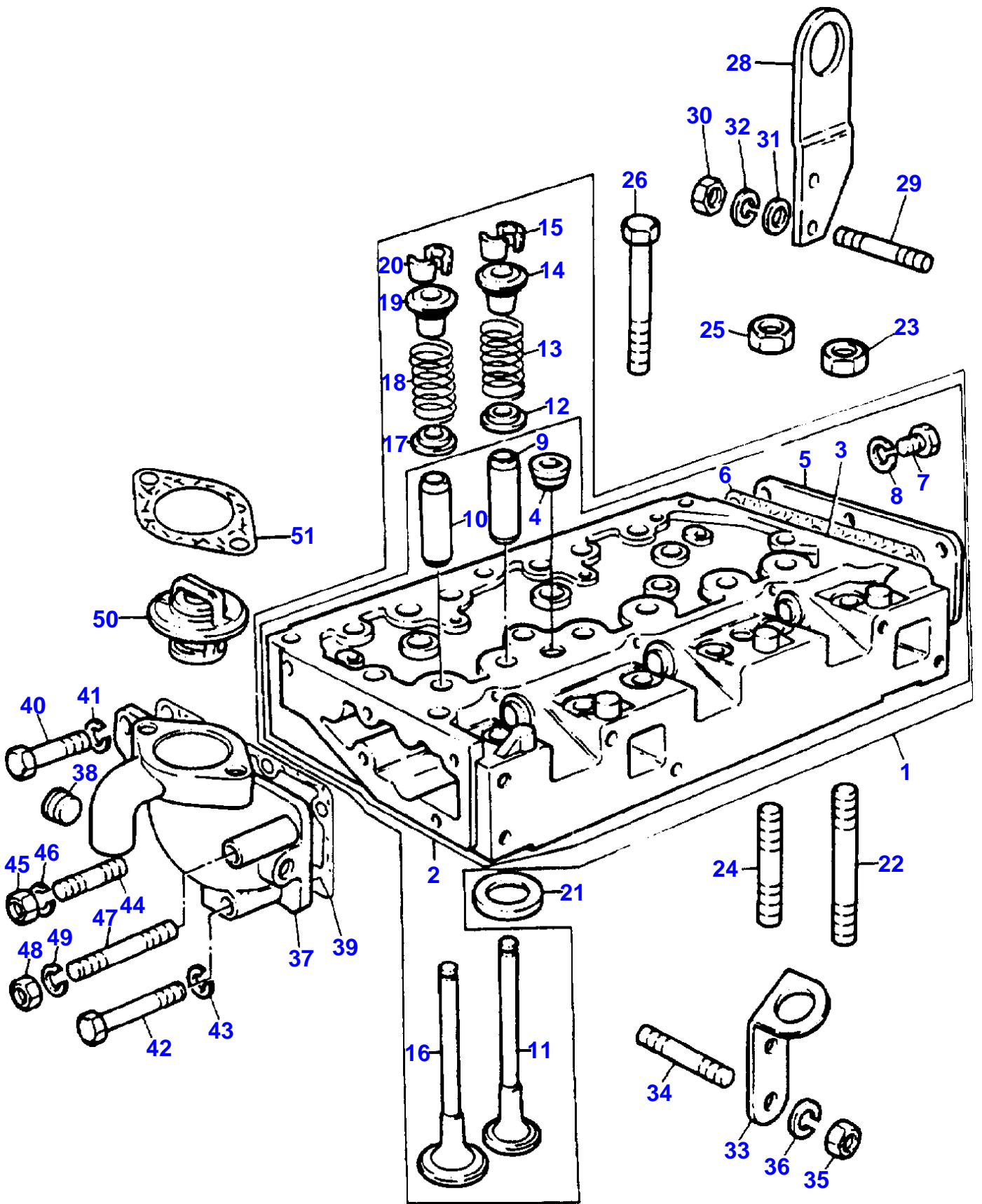
MF 354 F TRACTOR - 3311555

3311555

CRANKSHAFT, PISTONS AND CONNECTING RODS - AD3.152 ENGINE

6

Item	Part Number	Qty	Description	Comments
				UNTOPPED
				(C)
				PRE-TOPPED



MASSEY FERGUSON

MF 354 F TRACTOR - 3311555

3311555

CYLINDER HEAD - AD3.152 ENGINE

8

Item	Part Number	Qty	Description	Comments
				AD3.152 ENGINE
1	ZZ80082	1	Cylinder Head	
2	ZZ 80017	1	Cylinder Head	(1)
3		1	Cylinder Head	(2)
4	2431154	2	Plug	Not serviced, order REF.2 (2)
5	3612M002	1	Cover	(2)
6	0490485	1		(2)
7	353517X1	6	Screw	(2)
8	0920053	6	Washer	(2)
9	33261723	3	Guide	(2)
10	33261723	3	Guide	(2)
11	3142A081	3	Valve	(1)
12	33415133	3		Repairs and replaces 31431011 (1)
13	0780012	3	Spring	(1)
13	0780006	3	Spring	(A)
14	33423148	3	Cap	(B)
15	0230001	6	Spring	(1)
16	31431681	3	Valve	(1)
17	33415133	3		(1)
18	0780012	3	Spring	(1)
18	0780006	3	Spring	(D)
19	33423148	3	Cap	(E)
20	0230001	6	Spring	(1)
21	33124428	3	Insert	(C)
22	32524132	1	Stud	
23	33221329	1	Nut	
24	32524148	3	Stud	
25	33221329	3	Nut	
26	32181457	5	Screw	
27	32181458	9	Screw	
28	36531408	1	Stirrup	
29	2216194	1	Screw	
30	2188135	2	Nut	
31	0920004	2	Washer	
32	0920054	2	Lock Washer	
33	36456321	1	Plate	
34	0826462	2	Stud	
35	2188135	2	Nut	
36	0920054	2	Lock Washer	
37	37766363	1	Body	
38	2431A054	1	Plug	
39	3685A004	1		Repairs and replaces 0490482
40	2183205	2	Screw	
41	0920053	2	Washer	
42	0096437	1	Screw	
43	0920054	1	Lock Washer	
44	2217072	1	Screw	
45	353916X1	1	Nut	
46	0920053	1	Washer	
47	2215178	1	Screw	
48	2188135	1	Nut	
49	0920054	1	Lock Washer	
50	2485666	1	Thermostat	
51	0490184	1		

(A)  
REMOVE AND FIT 0780006

(B)

MASSEY FERGUSON

MF 354 F TRACTOR - 3311555

3311555

CYLINDER HEAD - AD3.152 ENGINE

8

Item Part Number Qty Description

Comments

FITTED IN PLACE OF EXHAUST VALVE SPRINGS SUPPLIED WITH CYLINDER HEAD ASSEMBLY

(C)

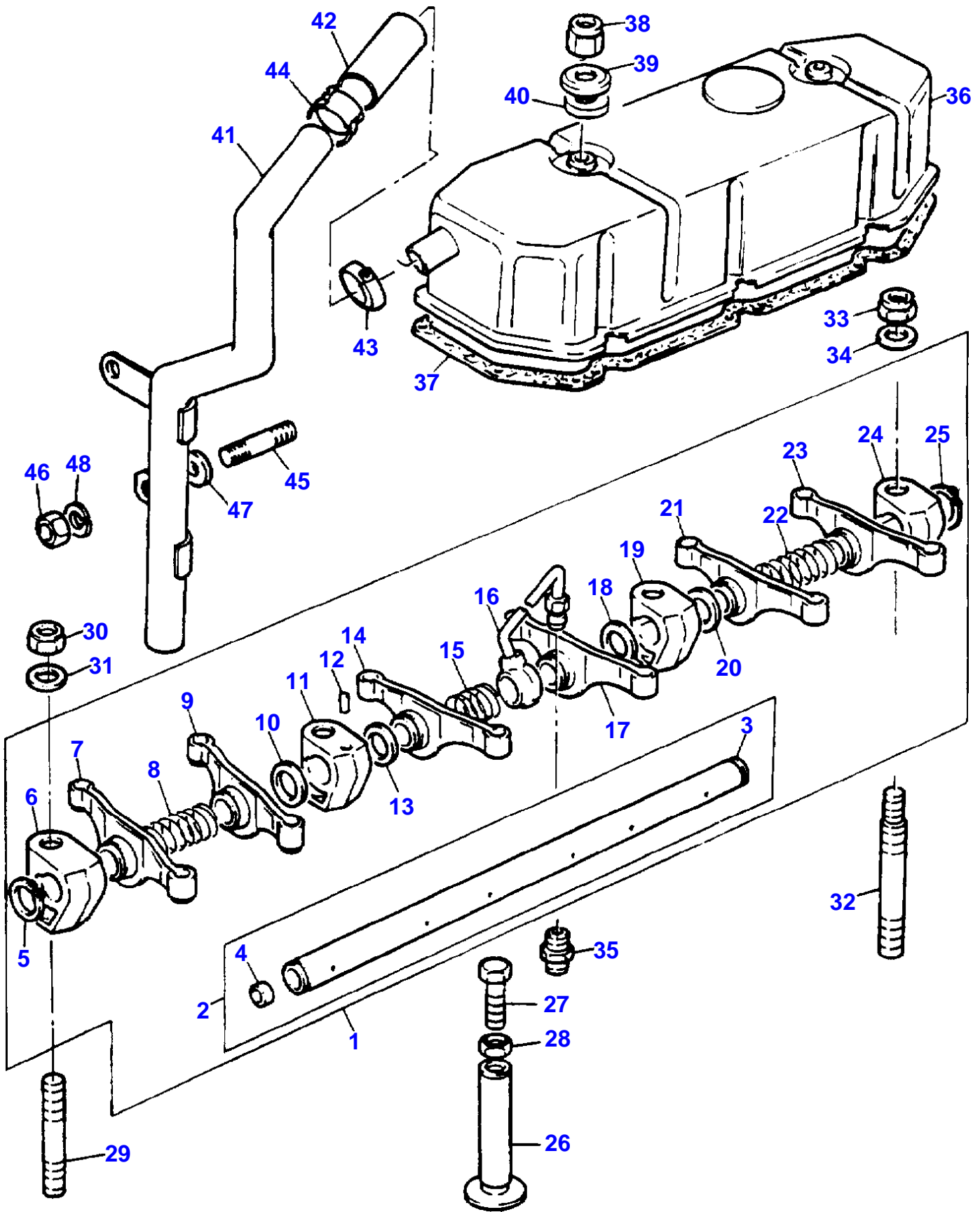
SERVICED IN PAIRS

(D)

REMOVE AND FIT 0780006

(E)

FITTED IN PLACE OF INLET VALVE SPRINGS SUPPLIED WITH CYLINDER HEAD ASSEMBLY



Item	Part Number	Qty	Description	Comments
				AD3.152 ENGINE
1	4115R805	1	Shaft	Repairs and replaces 4115R803
2	ZZ90047	1	Shaft	Repairs and replaces 41151306 (1)
3		1	Shaft	Repairs and replaces U7LR0002 (2) Not serviced, order REF.2
4	0650507	2	Plug	(2)
5	0170033	1	Ring	(1)
6	0101138	1	Support	(1)
7	3737A091	1	Lever	(1) Right Hand Repairs and replaces 3737A081 Repairs and replaces 3737A041
8	0780005	1	Spring	(1)
9	3737A091	1	Lever	(1) Right Hand Repairs and replaces 3737A081 Repairs and replaces 3737A041
10	0330505	1	Shim	(1)
11	37521212	1	Support	(1)
12	2112A066	1	Pin	(1)
13	0330505	1	Shim	(1)
14	3737A101	1	Lever	(1) Left Hand Repairs and replaces 3737A071 Repairs and replaces 3737A031
15	0780175	1	Spring	(1)
16	35568352	1	Pipe	(1)
17	3737A091	1	Lever	(1) Right Hand Repairs and replaces 3737A081 Repairs and replaces 3737A041
18	0330505	1	Shim	(1)
19	0101138	1	Support	(1)
20	0330505	1	Shim	(1)
21	3737A101	1	Lever	(1) Left Hand Repairs and replaces 3737A071 Repairs and replaces 3737A031
22	0780005	1	Spring	(1)
23	3737A101	1	Lever	(1) Left Hand Repairs and replaces 3737A071 Repairs and replaces 3737A031
24	0101138	1	Support	(1)
25	0170033	1	Ring	(1)
26	0860012	6	Tappet	
27	32151116	6	Screw	Repairs and replaces 0720677
28	0576052	6	Nut	
29	2214209	2	Stud	
30	2211283	2	Nut	
31	0920004	2	Washer	
32	32754435	2	Stud	
33	2211283	2	Nut	
34	0920004	2	Washer	
35	0206002	1	Union	
36	37188557	1	Cover	
37	36811115	1		
38	0576102	2	Nut	
39	3314P004	2	Washer	
40	3381A003	2	O Ring	
41	35732479	1	Chute	
42	0202058	1	Sleeve	
43	21825195	1	Clamp	Repairs and replaces 2481863
44	21825195	1	Clamp	Repairs and replaces 2481863
45	2217602	1	Screw	
46	353916X1	1	Nut	

MASSEY FERGUSON

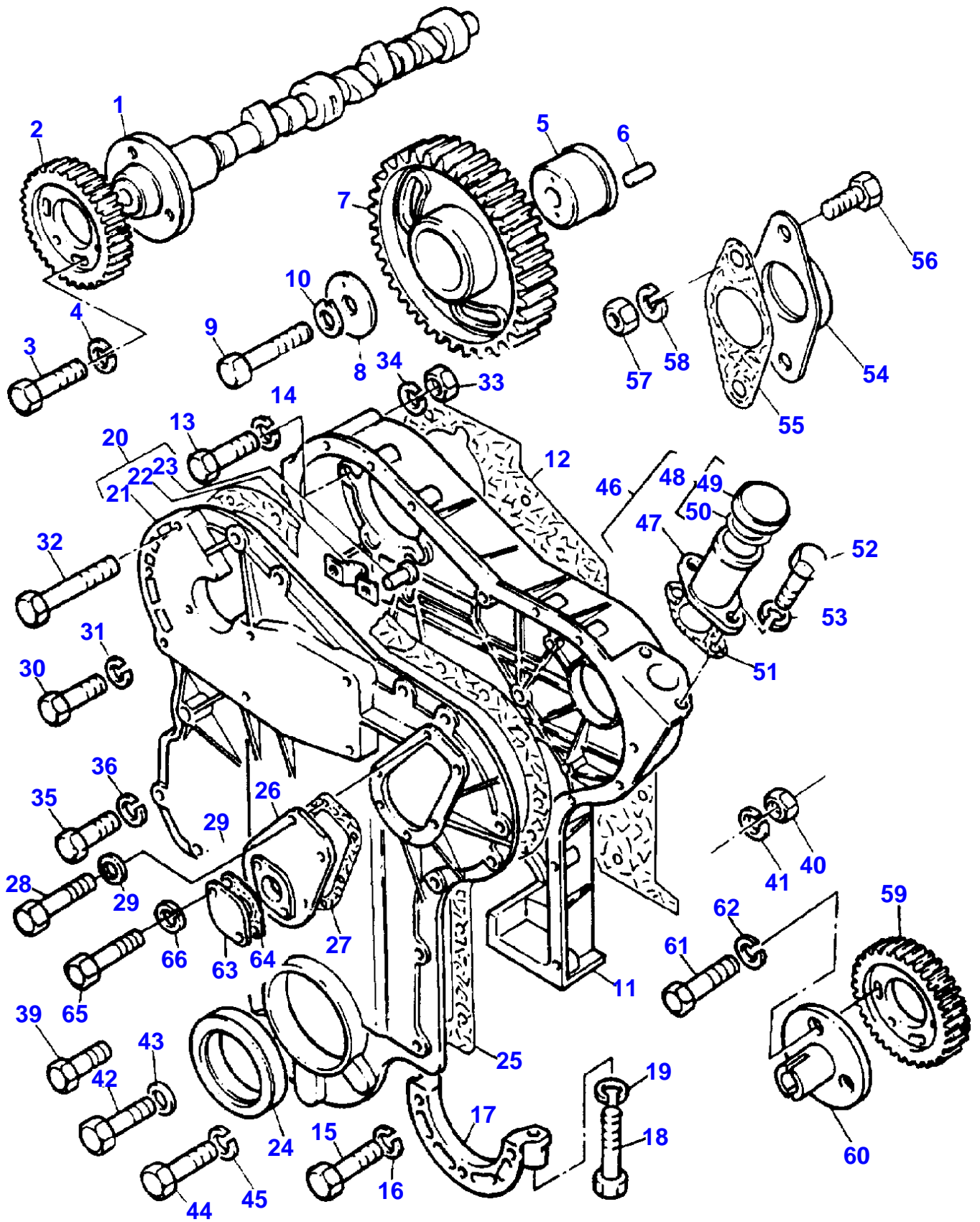
MF 354 F TRACTOR - 3311555

3311555

ROCKER SHAFT - AD3.152 ENGINE

11

Item	Part Number	Qty	Description	Comments
47	0920460	1	Washer	
48	0920053	1	Washer	



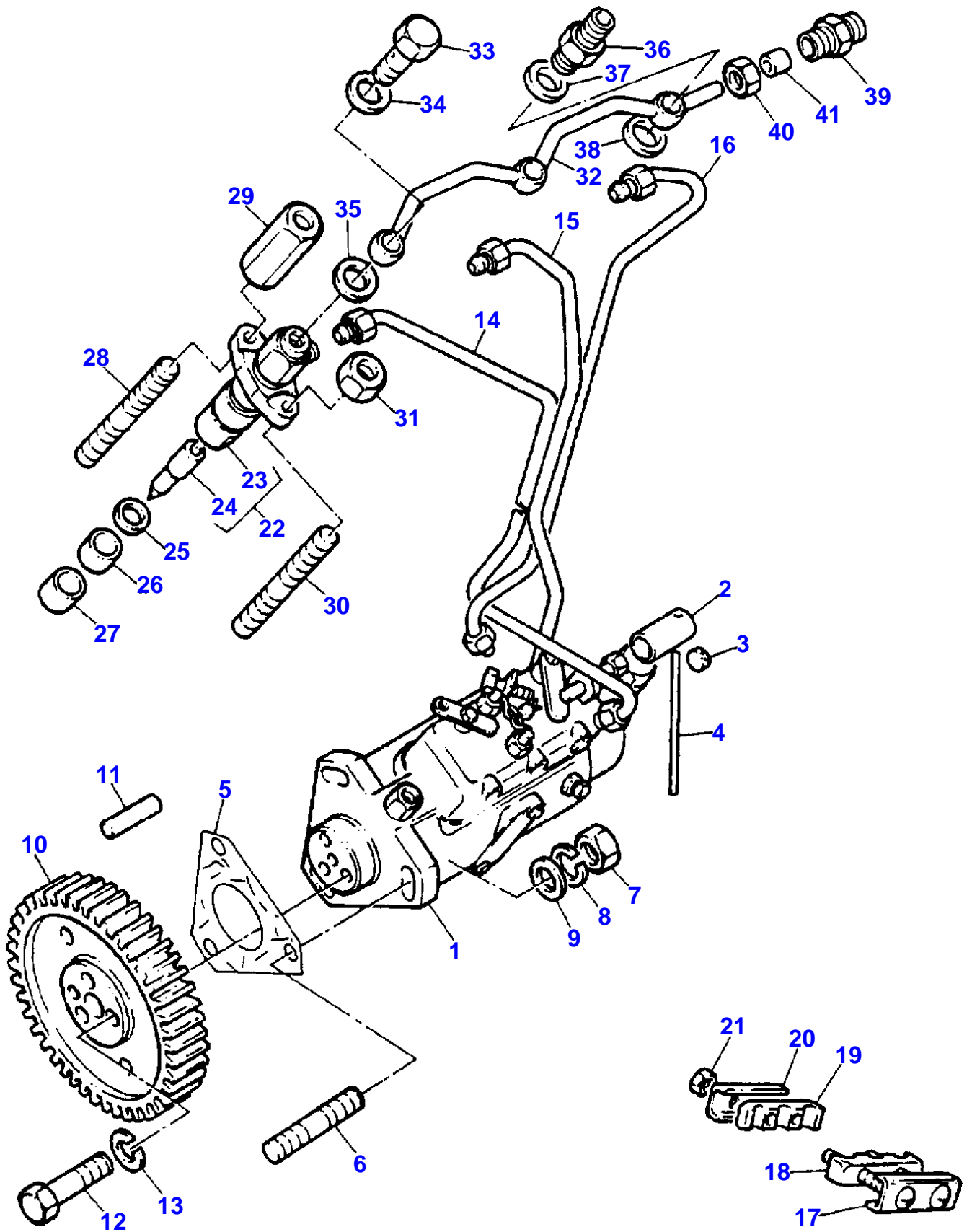
Item	Part Number	Qty	Description	Comments
				AD3.152 ENGINE
1	31415264	1	Shaft	
2	0410241	1	Gear	(A) Number of teeth/spines 50
2	31164131	1	Gear	(B) Number of teeth/spines 50
3	0746214	3	Screw	
4	0920053	3	Washer	
5	0995447	1	Hub	
6	0350005	1	Dowel	
7	31164362	1	Gear	(A) Number of teeth/spines 90
7	4111A015	1	Gear	(B) Number of teeth/spines 90
8	0940738	1		
9	0095199	1	Screw	
10	0920883	1	Washer	
11	37161481	1	Housing	
12	36814113	1		Repairs and replaces 36814119
13	0746355	12	Screw	
14	0920053	12	Washer	
15	0096234	2	Screw	
16	0920053	2	Washer	
17	37354312	1	Cover	
18	0096232	2	Screw	
19	0920053	2	Washer	
20	ZZ 90039	1	Cover	Repairs and replaces A5FH0245
21		1		(20) Not serviced, order REF.20
22	3661P002	1	Spring	(20)
23	2126151	1	Rivet	(20)
24	2415344	1		
25	36813136	1		
26	37523171	1	Cover	
27	36862512	1		
28	0748353	6	Screw	
29	2411151	6	Washer	
30	0748414	2	Screw	
31	0920053	2	Washer	
32	0096213	1	Screw	
33	0576002	1	Nut	
34	0920053	1	Washer	
35	0748353	8	Screw	
36	0920052	8	Washer	
37	0748412	2	Screw	
38	0920106	2	Washer	
39	0748510	2	Screw	
40	2238153	2	Nut	
41	0920054	2	Lock Washer	
42	2233207	1	Screw	
43	2411152	1	Washer	
44	2233207	3	Screw	
45	0920053	3	Washer	
46	35784123	1	Plug	
47		1		(46) Not serviced, order REF.46
48	2487854	1	Plug	(46)
49		1		(48) Not serviced, order REF.48
50	24870001	1		(48)
51	36837413	1		
52	2183204	2	Screw	
53	0920053	2	Washer	
54	37461104	1	Cover	
55	36835413	1		

TIMING GEAR AND CAMSHAFT - AD3.152 ENGINE

Item	Part Number	Qty	Description	Comments
56	0748510	2	Screw	
57	2238153	2	Nut	
58	0920054	2	Lock Washer	
59		1	Gear	See Page - Reference Number 16/ 10
60	32728103	1	Flange	
61		3	Screw	See Page - Reference Number 16/ 12
62		3	Washer	See Page - Reference Number 16/ 13
63	36171121	1	Base Plate	
64	36833119	1		
65	0748352	2	Screw	
66	0920052	2	Washer	

(A)  
FOR ENGINES BUILT TO BUILD LIST CE31197 (3553118M9 1).

(B)  
FOR ENGINES BUILT TO BUILD LIST CE31212 (3553128M9 1).



Item	Part Number	Qty	Description	Comments
				AD3.152 ENGINE
1	2643B133	1	Pump	
2	3281M002	1	Sleeve	Repairs and replaces 2644951
3	31718104	1	Sealer	
4	31718105	1	Wire	
5	3687H012	1		Repairs and replaces 0490685
6	2217575	3	Screw	
7	353916X1	3	Nut	
8	390972X1	3	Washer	
9	0920053	3	Washer	
10	31164632	1	Gear	(A) Number of teeth/spines 50
10	3116K082	1	Gear	(B) Number of teeth/spines 50
11	0350010	1	Dowel	
12	0746211	3	Screw	
13	0920053	3	Washer	
14	3521E018	1	Pipe	NO.1 CYL. Repairs and replaces 3531E011 Repairs and replaces 3521E007
15	3521E019	1	Pipe	NO.2 CYL. Repairs and replaces 3521E008
16	3521E021	1	Pipe	NO.3 CYL. Repairs and replaces 3521E009
17	38631117	1	Support	
18	36845115	1	Pad	
19	36845115	1	Pad	
20	36511127	1	Plate	
21	2211401	2	Nut	
22	2645C021	3	Atomiser	Repairs and replaces 2645C021
23	2645C305	1	Support	(22) Repairs and replaces 2646466
24	2645C620	1	Nozzle	(22) Repairs and replaces 2646825
25	0921173	3	Washer	
26	33813126	3	Spacer	
27	33813127	3	Ring	
28	2216105	3	Stud	
29	32726512	3	Nut	
30	2216105	3	Stud	
31	353916X1	3	Nut	
32	3558X007	1	Pipe	
33	0095315	2	Filler	
34	0920107	2	Washer	
35	0920107	2	Washer	
36	0201526	1	Union	
37	0920107	1	Washer	
38	0920107	1	Washer	
39	0206102	1	Union	
40	33225412	1	Nut	
41	33811112	1	Spinner	

(A)  
FOR ENGINES BUILT TO BUILD LIST CE31197 (3553118M9 1).

(B)  
FOR ENGINES BUILT TO BUILD LIST CE31212 (3553128M9 1).



**Suggest:**

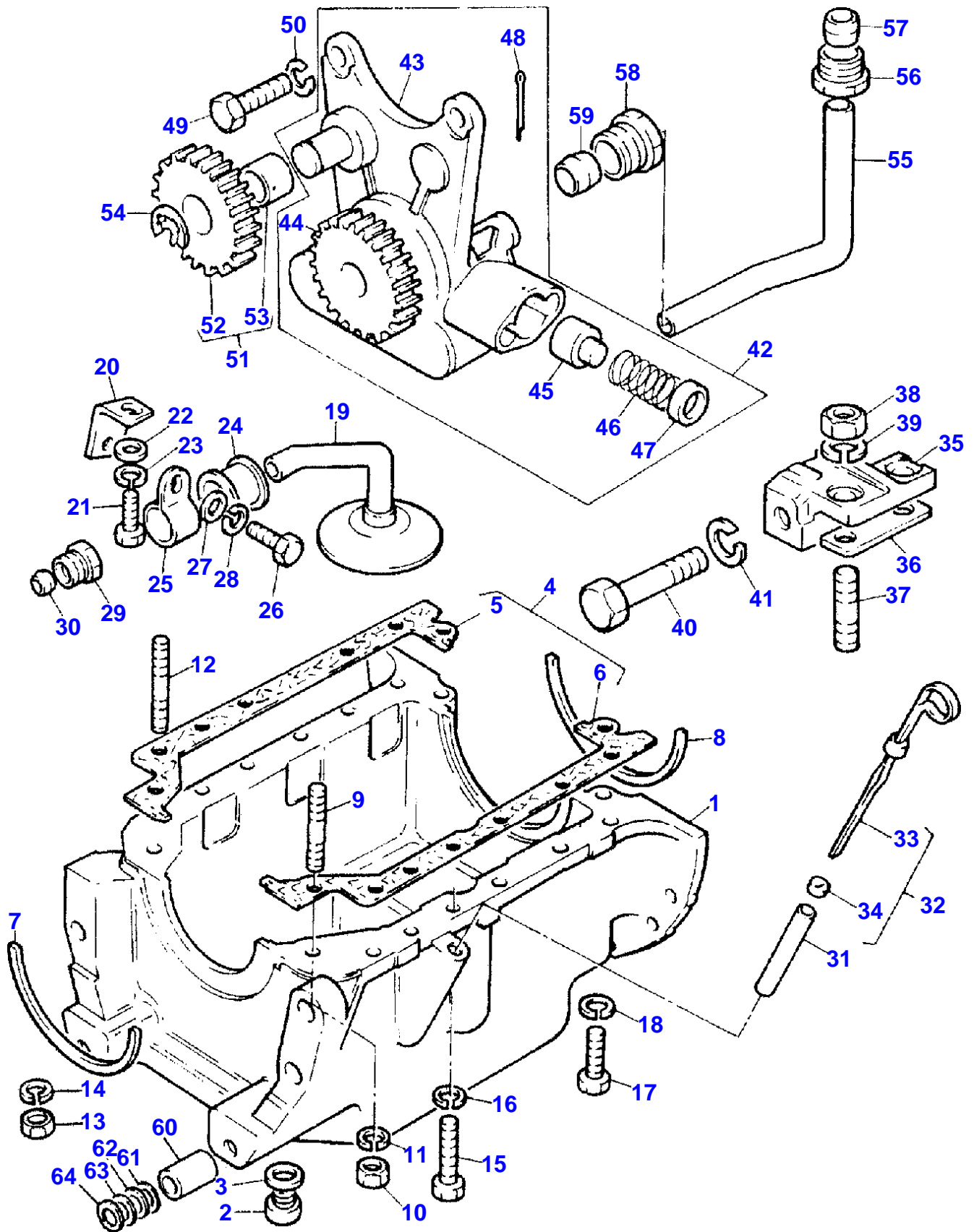
**If the above button click is invalid.**

**Please download this document**

**first, and then click the above link**

**to download the complete manual.**

**Thank you so much for reading**



**<https://www.ebooklibonline.com>**

Hello dear friend!

Thank you very much for reading.

Enter the link into your browser.

The full manual is available for immediate download.

**<https://www.ebooklibonline.com>**