

CX350C
Tier 4
Crawler Excavator

OPERATOR'S MANUAL

Part number 84406998
1st edition English
January 2011



Contents

1 GENERAL INFORMATION

Safety rules and signal word definitions	1-1
Safety rules	1-2
Note to the Owner	1-3
Product identification	1-5
Left, right, front and rear of the machine	1-8
Electro-magnetic interference (EMC).....	1-8
Description of the main components	1-9

2 SAFETY INFORMATION

Safety rules	2-1
Safety decals	2-7
Hand signals.....	2-21

3 CONTROLS/INSTRUMENTS

ACCESS TO OPERATOR'S PLATFORM

FRAME AND CAB - Access/Exit	3-1
Position of the operator's compartment controls and accessories	3-3

OPERATOR'S SEAT

Air suspension seat adjustments	3-5
---------------------------------------	-----

FORWARD CONTROLS

Hand control levers and pedals	3-8
Windshield.....	3-12
Front lower window	3-13
Front right hand console.....	3-14
System display and function control panel	3-15
Monitor switches.....	3-21
Menu screen display	3-24
Diesel particulate diffuser.....	3-32
Clock adjustment	3-39

LEFT-HAND SIDE CONTROLS

Left-hand control arm.....	3-40
Heating, ventilation or air-conditioning control	3-41
Function cancellation lever and safety bar	3-45
Cab internal lighting	3-46
Emergency exit hammer	3-46
Tool quick coupler locking and unlocking control switch (Optional)	3-47
Sliding windows on door.....	3-47

RIGHT-HAND SIDE CONTROLS

Right-hand control arm	3-48
Cab radio	3-49
Right hand console	3-51
Coat hanger hook	3-52
Cup holder.....	3-52

REARWARD CONTROLS

Fuse box.....	3-53
Magazine rack	3-53
Refrigerated compartment.....	3-54
Storage compartment	3-54

OVERHEAD CONTROLS

Roof curtain.....	3-55
Roof hatch.....	3-55
Sun shield (optional)	3-55

EXTERIOR CONTROLS

Fuel tank.....	3-56
Rear view mirrors.....	3-57
Cameras.....	3-58
Front storage box.....	3-58
Side doors	3-59
Engine hood.....	3-60
Lower panels	3-61
Windshield washer reservoir	3-61
Load handling eyes.....	3-62
Towing holes.....	3-63
Safety valves (optional)	3-64
Optional tool supply valves (optional)	3-64
Fuel tank filler pump (if equipped)	3-65
Cab protection (ROPS and FOPS) (optional)	3-67

4 OPERATING INSTRUCTIONS

COMMISSIONING THE UNIT

USER PLATFORM - Operating.....	4-1
USER PLATFORM - Running-in Procedure.....	4-3

STARTING THE UNIT

Anti-theft protection.....	4-4
Starting the engine	4-7
Bringing the machine up to operating temperature.....	4-9
Engine operation	4-10
Operating the machine in hot or cold weather.....	4-11
Machine operation.....	4-12

<https://www.ebooklibonline.com>

Hello dear friend!

Thank you very much for reading.

Enter the link into your browser.

The full manual is available for immediate download.

<https://www.ebooklibonline.com>

STOPPING THE UNIT

Stopping the engine	4-13
---------------------------	------

MOVING THE UNIT

Machine travel	4-14
Handling the machine	4-17
Load handling	4-18
Operating the machine	4-20
Quick coupler (optional)	4-22
Lowering the attachment in the event of a failure	4-27
Auxiliary hydraulic circuits	4-28
Optional hand control levers configuration	4-34

PARKING THE UNIT

Parking the machine.....	4-35
--------------------------	------

5 TRANSPORT OPERATIONS

SHIPPING TRANSPORT

Transporting the machine	5-1
--------------------------------	-----

RECOVERY TRANSPORT

Towing	5-6
--------------	-----

6 MAINTENANCE

GENERAL INFORMATION

Basic instructions	6-1
Fluids, fuels and lubricants	6-4
Fluid capacities and lubricant specifications	6-8
Grease points.....	6-9
Levels.....	6-17
Engine	6-19
Cooling system	6-22
Fuel system.....	6-25
Releasing pressure in the hydraulic system.....	6-30
Hydraulic circuit.....	6-32
Air filter	6-41
Swing reduction gear	6-45
Travel reduction gears.....	6-47
Tracks	6-48
Track rollers and idler wheels	6-51
Radiator and coolers	6-52
Fan and alternator drive belt	6-54
Adjustment of engine valve rocker clearances	6-55
Fuel tank filter	6-55
Fire extinguisher (not supplied)	6-56

Protecting the Electrical/Electronic Systems During Charging or Welding	6-56
Cab protection (ROPS and FOPS) (optional)	6-57
Machine inspection and cleaning	6-57
Checking the machine settings	6-57
Plastic and resin parts	6-58
Checking the cylinders for leaks	6-58
Tooth tip wear limits on the backhoe bucket	6-58
Replacing a tooth on a backhoe bucket	6-59
Replacing a backhoe bucket	6-60
Checking the opening of the quick coupler locking hook (optional)	6-61
Air conditioning	6-63
Diesel particulate diffuser	6-66
Gas spring inspection	6-67
Torque specifications for hardware	6-68
Fuses	6-69
Batteries	6-71
Alternator	6-75
Starter motor	6-75
Bulb replacement	6-76

MAINTENANCE CHART

Maintenance Chart	6-79
-------------------------	------

STORAGE

Preparation for storage	6-83
Periodic checks	6-84
Starting up after storage	6-85

7 TROUBLESHOOTING

FAULT CODE RESOLUTION

Engine troubleshooting	7-1
------------------------------	-----

8 SPECIFICATIONS

General specification	8-1
Noise level	8-3
Weight	8-3
Dimension	8-4

1 - GENERAL INFORMATION

Safety rules and signal word definitions


Personal safety





This is the safety alert symbol. It is used to alert you to potential personal injury hazards. Obey all safety messages that follow this symbol to avoid possible death or injury.

Throughout this manual you will find the signal words DANGER, WARNING, and CAUTION followed by special instructions. These precautions are intended for the personal safety of you and those working with you.

Read and understand all the safety messages in this manual before you operate or service the machine.

 DANGER indicates a hazardous situation which, if not avoided, will result in death or serious injury.

 WARNING indicates a hazardous situation which, if not avoided, could result in death or serious injury.

 CAUTION indicates a hazardous situation which, if not avoided, could result in minor or moderate injury.

FAILURE TO FOLLOW DANGER, WARNING, AND CAUTION MESSAGES COULD RESULT IN DEATH OR SERIOUS INJURY.

Machine safety

NOTICE: Notice indicates a situation which, if not avoided, could result in machine or property damage.

Throughout this manual you will find the signal word Notice followed by special instructions to prevent machine or property damage. The word Notice is used to address practices not related to personal safety.

Information

NOTE: Note indicates additional information which clarifies steps, procedures, or other information in this manual.

Throughout this manual you will find the word Note followed by additional information about a step, procedure, or other information in the manual. The word Note is not intended to address personal safety or property damage.

Safety rules

**CALIFORNIA
PROPOSITION 65 WARNING**

Diesel engine exhaust and some of its constituents are known to the State of California to cause cancer, birth defects, and other reproductive harm.

Battery post, terminals and related accessories contain lead and lead compounds.

Wash hands after handling

BT09A213 1

Note to the Owner

IMPROPER OPERATION OF THIS MACHINE CAN CAUSE INJURY OR DEATH. BEFORE USING THIS MACHINE, MAKE CERTAIN THAT EVERY OPERATOR:

- Is instructed in safe and proper use of the machine.
- Reads and understands the Manual(s) pertaining to the machine.
- Reads and understands ALL Safety Decals on the machine.
- Clears the area of other persons.
- Learns and practices safe use of machine controls in a safe, clear area before operating this machine on a job site.

It is your responsibility to observe pertinent laws and regulations and follow CASE instructions on machine operation and maintenance.

Your machine has been designed and built to the highest standards of quality. It conforms to all current safety regulations. However, the risk of accidents can never be completely excluded. That is why it is essential to observe elementary safety rules and precautions.

Read this manual carefully, paying particular attention to the instructions concerning safety, operation and maintenance so as to avoid the risk of injury while operating or servicing the machine.

The standard attachments and tools of this machine are designed to carry out all kinds of earthmoving and rehandling operations. If you want to use this machine to handle a load (pipes, culverts, formwork, etc.), make sure that it is designed to carry out this kind of work. For this type of application, the machine must be equipped with safety valves, a load handling chart corresponding to the type of machine and its attachment and a load fixing point. All legal requirements must also be strictly observed.

Do not use this machine for any application or purpose other than those described in this manual. If the machine is to be used for work involving the use of special attachments, accessories or equipment, consult your CASE Dealer in order to make sure that any adaptations or modifications made are in keeping with the machine's technical specifications and with prevailing safety requirements.

Any modification or adaptation which is not approved by the manufacturer may invalidate the machine's initial conformity with safety requirements.

The machine must undergo regular inspections, the frequency of which varies according to the type of use. Consult your CASE Dealer.

The engine and fuel system on your machine is designed and built to government emissions standards. Tampering by dealers, customers, operators and users is **STRICTLY PROHIBITED BY LAW**. Failure to comply could result in government fines, rework charges, invalid warranty, legal action and possible confiscation of the machine until rework to original condition is completed. Engine service and/or repairs must be done by a certified technician only.

Your CASE Dealer can provide after-sales service and genuine CASE spare parts, your guarantee of quality and match.

CNH America LLC. Company reserves the right to make changes in the specification and design of the machine without prior notice and without incurring any obligation to modify units previously sold.

The description of the models shown in this manual has been made in accordance with the technical specifications known as of the date of design of this document.

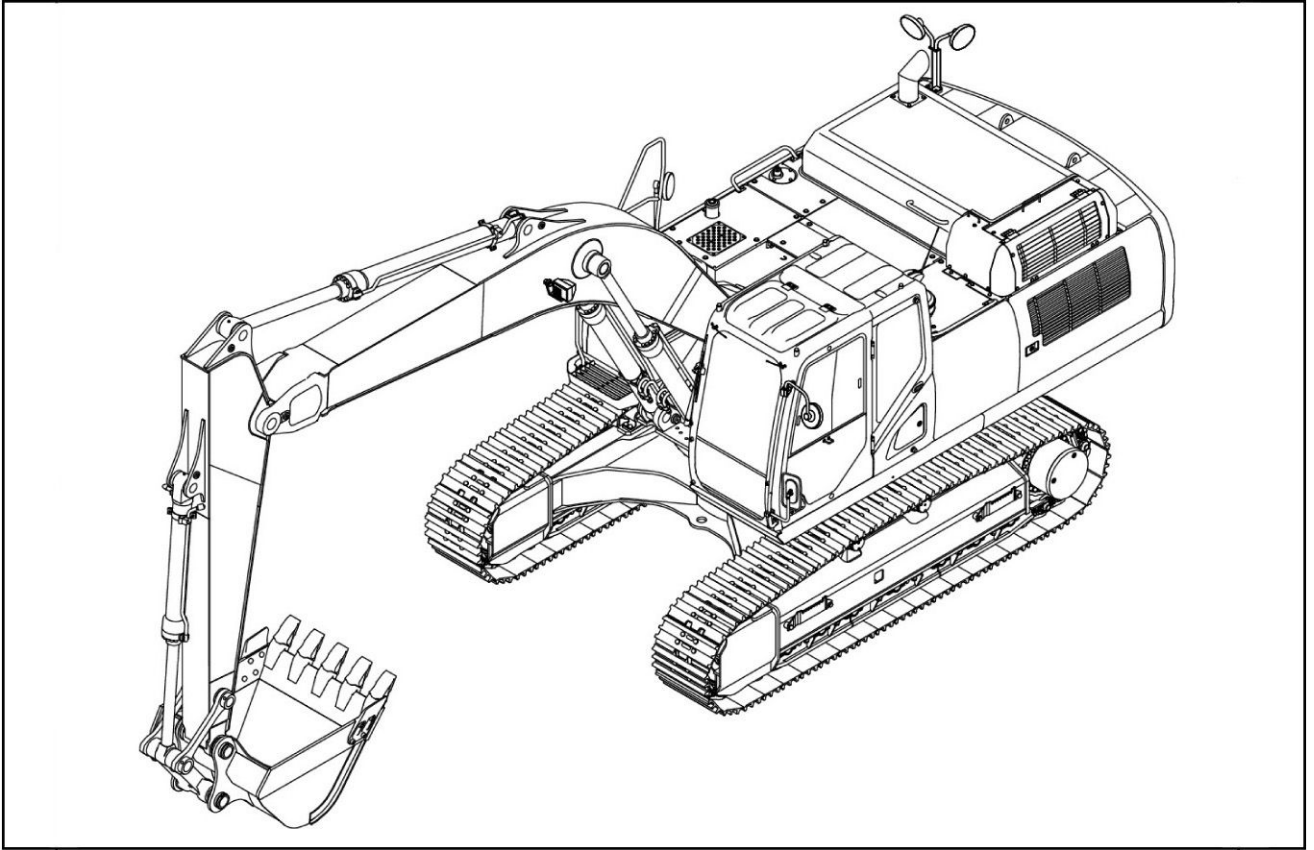
All data given in this manual is subject to production variations. Dimensions and weights are provided with approximate values and the machine fitting shown in the illustrations may not correspond with standard models. For precise information on specific machine models and versions, please consult your CASE Dealer.

Reproduction or translation, even partial, is prohibited without written authorization from **CNH America LLC.** Company.

Copyright 2011 CNH America LLC
Issued January 2011

Product identification

CX350C HYDRAULIC CRAWLER EXCAVATORS



1JOA94-003 1

Dealer's Stamp



BLANCTPB1 2



Suggest:

If the above button click is invalid.

Please download this document

first, and then click the above link

to download the complete manual.

Thank you so much for reading

TYPE, SERIAL NUMBER AND YEAR OF MANUFACTURE OF THE MACHINE

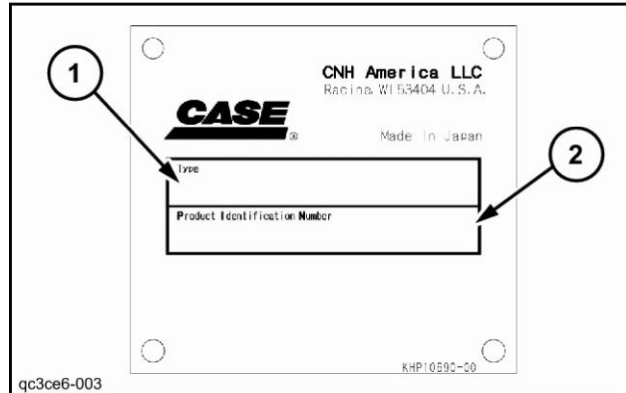
When ordering parts, obtaining information or assistance, always supply your CASE Dealer with the type and serial number of your machine or accessories.

Write the following in the spaces below: the type, serial number and year of manufacture of your machine, accessories and the serial numbers of the various hydraulic and mechanical components

Machine

(1) Type / Model and Category:
(Hydraulic Excavator) **CX350C**.

(2) Serial number:



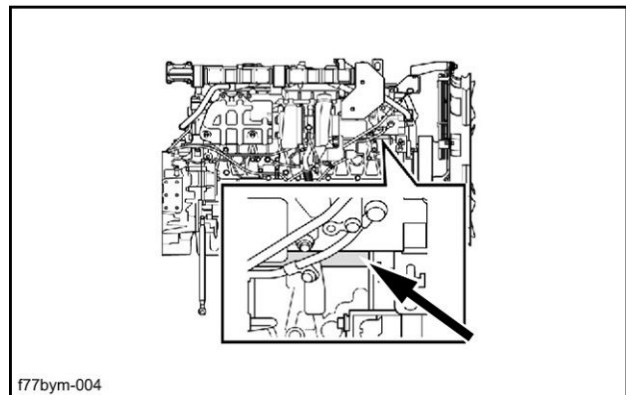
QC3CE6-003 3

Engine

Make and type: **ISUZU AL - 6HK1X**

Serial number:

ATTENTION: The engine and fuel system on your machine is designed and built to government emissions standards. Tampering by dealers, customers, operators and users is **STRICTLY PROHIBITED BY LAW**. Failure to comply could result in government fines, rework charges, invalid warranty, legal action and possible confiscation of the machine until rework to original condition is completed. Engine service and/or repairs must be done by a certified technician only.



F77BYM-004 4

Component serial numbers

Hydraulic pump:

Swing reduction gear:

Travel reduction gears:

Travel control valve:

Attachment control valve:

Swing control valve:

<https://www.ebooklibonline.com>

Hello dear friend!

Thank you very much for reading.

Enter the link into your browser.

The full manual is available for immediate download.

<https://www.ebooklibonline.com>