

CASE

PROFESSIONAL PARTNER

**OPERATOR'S MANUAL
WHEEL LOADER**

**721E
821E
TIER 3**

87479861 NA
Replaces 87364251 NA

Issued 03-2008



OPERATOR'S MANUAL

WHEEL LOADER

721E
821E
TIER 3




READ, UNDERSTAND, AND FOLLOW ALL SAFETY PRECAUTIONS AND INSTRUCTIONS FOUND IN THIS MANUAL BEFORE OPERATING THE MACHINE.

CNH America LLC reserves the right to make improvements in design or changes in specifications at any time without incurring any obligation to install them on units previously sold.

All data given in this publication is subject to production variations. Dimensions and weights are only approximate. Illustrations do not necessarily show products in standard condition. For exact information about any particular product, please consult your Dealer.

REVISION HISTORY			
Issue	Issue Date	Applicable Machines	Remarks
First Edition	08-2006	721E-821E Tier 3 Wheel Loader	87364251 NA
Revision 1	03-2008	721E-821E Tier 3 Wheel Loader	87479861 NA






THIS SAFETY ALERT SYMBOL INDICATES IMPORTANT SAFETY MESSAGES IN THIS MANUAL. WHEN YOU SEE THIS SYMBOL, CAREFULLY READ THE MESSAGE THAT FOLLOWS AND BE ALERT TO THE POSSIBILITY OF DEATH OR SERIOUS INJURY.

Safety Decals on this machine use the words Danger, Warning, or Caution, which are defined as follows:

- **DANGER:** Indicates an immediate hazardous situation that, if not avoided, will result in death or serious injury. The color associated with Danger is RED.
- **WARNING:** Indicates a potentially hazardous situation that, if not avoided, could result in death or serious injury. The color associated with Warning is ORANGE.
- **CAUTION:** Indicates a potentially hazardous situation which, if not avoided, may result in minor or moderate injury. It may also be used to alert against unsafe practices. The color associated with Caution is YELLOW.

If Safety Decals on this machine are ISO two panel Pictorial, decals are defined as follows:

- The first panel indicates the nature of the hazard.
- The second panel indicates the appropriate avoidance of the hazard.
- Background color is YELLOW
- Prohibition symbols such as  and  if used, are RED.



WARNING

IMPROPER OPERATION OF THIS MACHINE CAN CAUSE DEATH OR SERIOUS INJURY. BEFORE USING THIS MACHINE, MAKE CERTAIN THAT EVERY OPERATOR:

- ② Is instructed in safe and proper use of the machine.
- ② Reads and understands the Manual(s) pertaining to the machine.
- ② Reads and understands ALL Safety Decals on the machine.
- ② Clears the area of other persons.
- ② Learns and practices safe use of machine controls in a safe, clear area before operating this machine on a job site.

It is your responsibility to observe pertinent laws and regulations and follow instructions on machine operation and maintenance.

**CALIFORNIA
PROPOSITION 65 WARNING**

Diesel engine exhaust and some of its constituents are known to the State of California to cause cancer, birth defects, and other reproductive harm.

Battery post, terminals and related accessories contain lead and lead compounds. Wash hands after handling.

TECHNICAL MANUALS

Manuals are available from your Dealer for the operation, service, and repair of your machine. Contact your Dealer for assistance in obtaining the manuals for your machine. Your Dealer can expedite your order for Operator's Manuals, Parts Catalogs, Service Manuals, and maintenance records. Always give the Machine Name, Model, and P. I. N. (Product Identification Number) or S. N. (Serial Number) of your machine so your Dealer can provide the correct manuals for your machine.

<https://www.ebooklibonline.com>

Hello dear friend!

Thank you very much for reading.

Enter the link into your browser.

The full manual is available for immediate download.

<https://www.ebooklibonline.com>

TABLE OF CONTENTS

CHAPTER 1

GENERAL INFORMATION

To the Owner	1-1
Machine Components	1-5

CHAPTER 2

SAFETY, AND DECALS

Table of Contents	2-1
Safety Rules	2-3
Personal Safety	2-3
Utility Safety	2-4
Decals	2-11

CHAPTER 3

INSTRUMENTS AND CONTROLS

Table of Contents	3-1
Access Doors and Covers	3-3
Cab	3-5
Front Console	3-14
Instrument Panel Indicators	3-15
Control Levers	3-32
Side Console	3-37
Climate Control	3-38

CHAPTER 4

OPERATING INSTRUCTIONS

Table of Contents	4-1
Control Levers	4-13

CHAPTER 5

LUBRICATION, FILTERS, AND FLUIDS

Table of Contents	5-1
Servicing Instructions	5-3
Support Strut for Loader Lift Arms	5-4
Releasing Pressure in the Hydraulic System	5-5
Fluids and Lubricants	5-6
Engine Oil Viscosity / Temperature Ranges	5-7
Daily Inspections	5-10
Lubrication and Maintenance Quick Reference Chart	5-11
Access Doors and Fill Locations	5-12
Scheduled Maintenance	5-14

CHAPTER 6

MAINTENANCE AND ADJUSTMENTS

Table of Contents	6-1
Cab Service	6-20

CHAPTER 7

ELECTRICAL

Table of Contents	7-1
Electrical System	7-3
Batteries	7-5
Fuses and Relays	7-7
Machine Lights	7-10

CHAPTER 8

SPECIFICATIONS

Table of Contents	8-1
Specifications	8-3
721E	8-3
Specifications	8-7
821E	8-7

CHAPTER 9

INDEX

Chapter 1
GENERAL INFORMATION
TO THE OWNER



BD06F164

Figure 1

721E

Read this manual before you start the engine or operate the machine. If you need more information, see your Case dealer.

With experienced and trained technicians, your Case dealer can provide the best methods of repair and maintenance for your machine. Your dealer can give you assistance with Case approved service parts.

Use this manual as a guide. Your Wheel Loader will remain a reliable working tool as long as it is kept in working condition and serviced properly.



BD06F005

Figure 2

721E XT

DO NOT OPERATE or permit anyone to operate or service this machine until you or the other persons have read and understand the safety, operation and maintenance instructions in this manual. Use only trained operators who have demonstrated the ability to operate and service this machine correctly and safely.

This Wheel Loader, with standard equipment and attachments is intended to be used for digging and general earth moving purposes such as land leveling, truck loading, and material rehandling. This machine is not intended to be used for lifting other objects or transporting loads at high speeds.



BD06F007

Figure 3

821E

DO NOT use this machine for any application or purpose other than those described in this manual. If the loader is to be used in an application that involves special attachments or equipment, such as forestry, etc., consult an authorized dealer. Consult an authorized dealer on changes, additions or modifications that can be required for this machine to comply with various country regulations and safety requirements. Unauthorized modifications may cause serious injury or death. Anyone making such unauthorized modifications is responsible for the consequences.

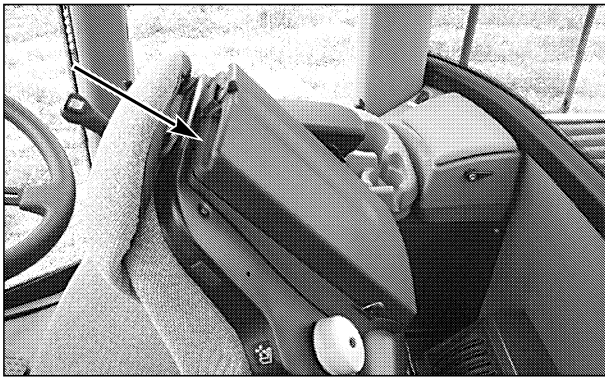
This Operators Manual is to be stored in the manual compartment equipped on this machine. Make sure this manual is complete and in good condition. Contact your dealer to obtain additional manuals. Contact your dealer for any further information or assistance about your machine.

Before permitting a new operator on this machine, make certain:

- That the operator has received the necessary training to operate the machine correctly and safely.
- That the operator has read and understands the instructions given in this manual.

Always keep this manual in the operator's compartment. Make sure it is always complete and in good condition. If you wish to obtain extra copies, or copies in languages other than that of the country of use, consult your dealer.

Your dealer is at your disposal for any further information. He will also provide any after-sales service you may require and genuine Case replacement parts, your guarantee of quality and match.



BD06F071

Figure 4

OPERATOR MANUAL STORAGE COMPARTMENT

To access the operator manual storage area located on the back of the operator's seat, release the latch on top of the seat and open the compartment.

READ THIS MANUAL COMPLETELY and make certain you understand the controls. All equipment has a limit. Make sure you understand the speed, brakes, steering, stability and load characteristics of this machine before you start to operate.

DO NOT remove this manual or the safety manual from the machine. See your dealer for additional manuals. Also see the manual information on the inside of the rear cover of this manual.

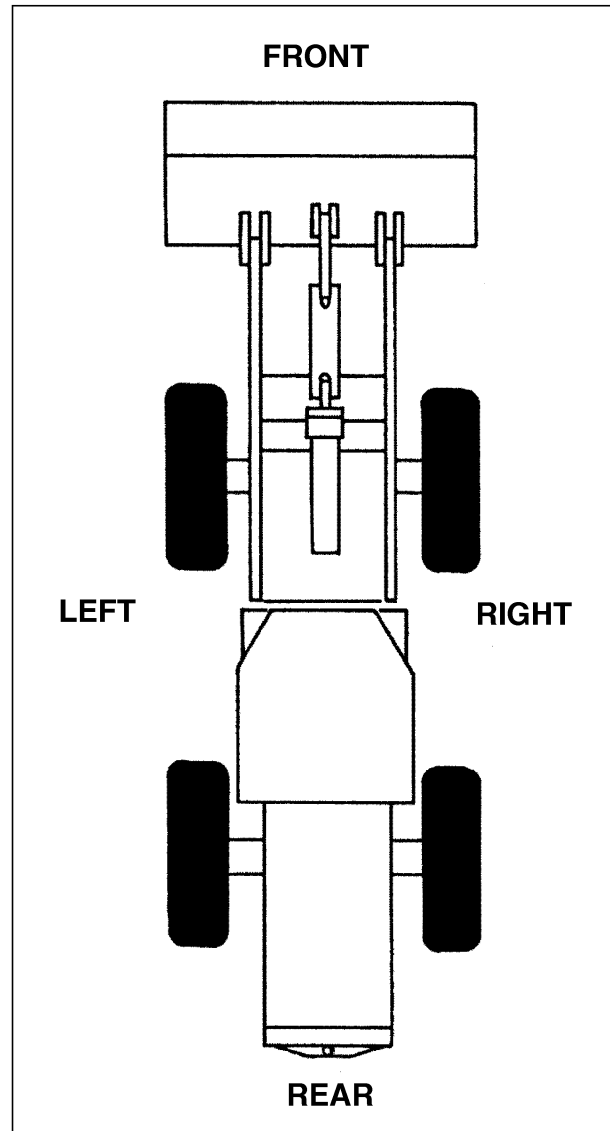
When you see this symbol read your Operator's Manual.



When you see this symbol refer to your Repair Manual.



RIGHT, LEFT, FRONT, AND REAR OF THE MACHINE

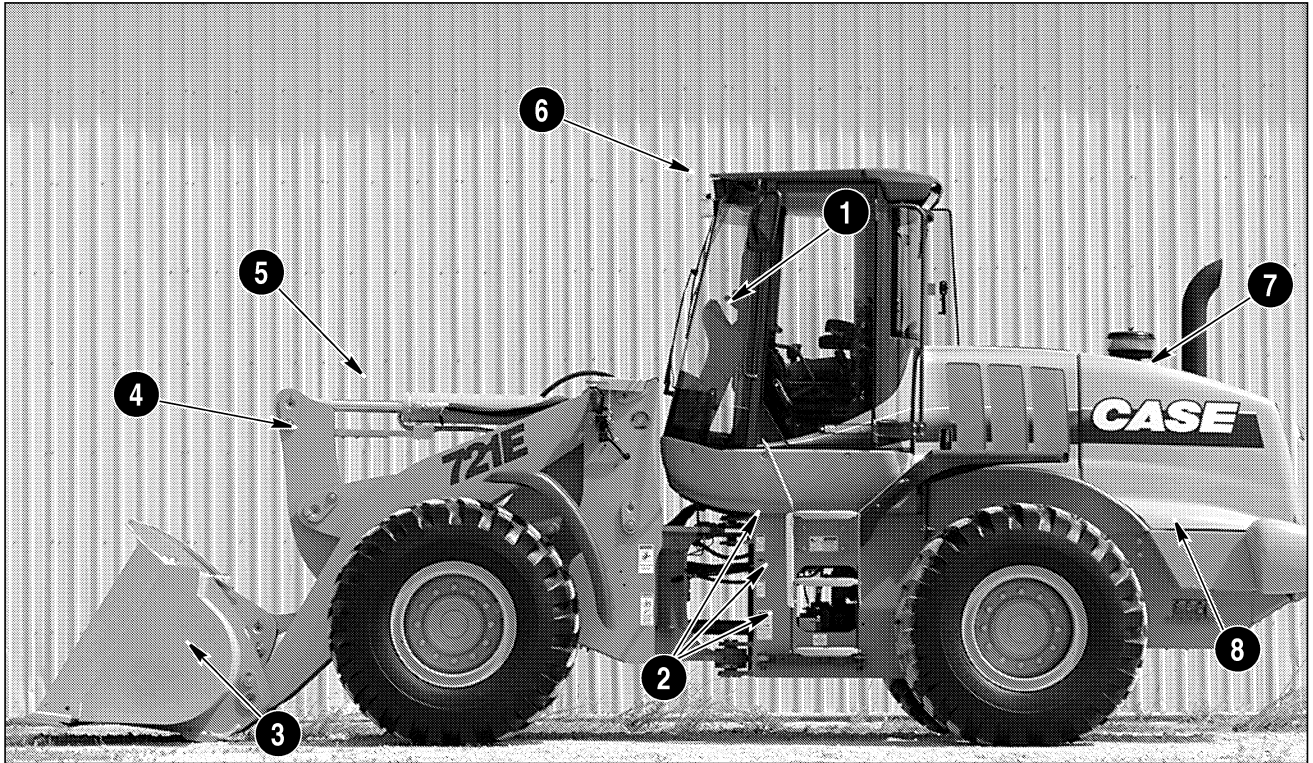


B891464

Figure 5

The terms Right-hand, Left-hand, Front, and Rear are used in this manual to indicate the sides as they are seen from the operator's seat.

MACHINE COMPONENTS

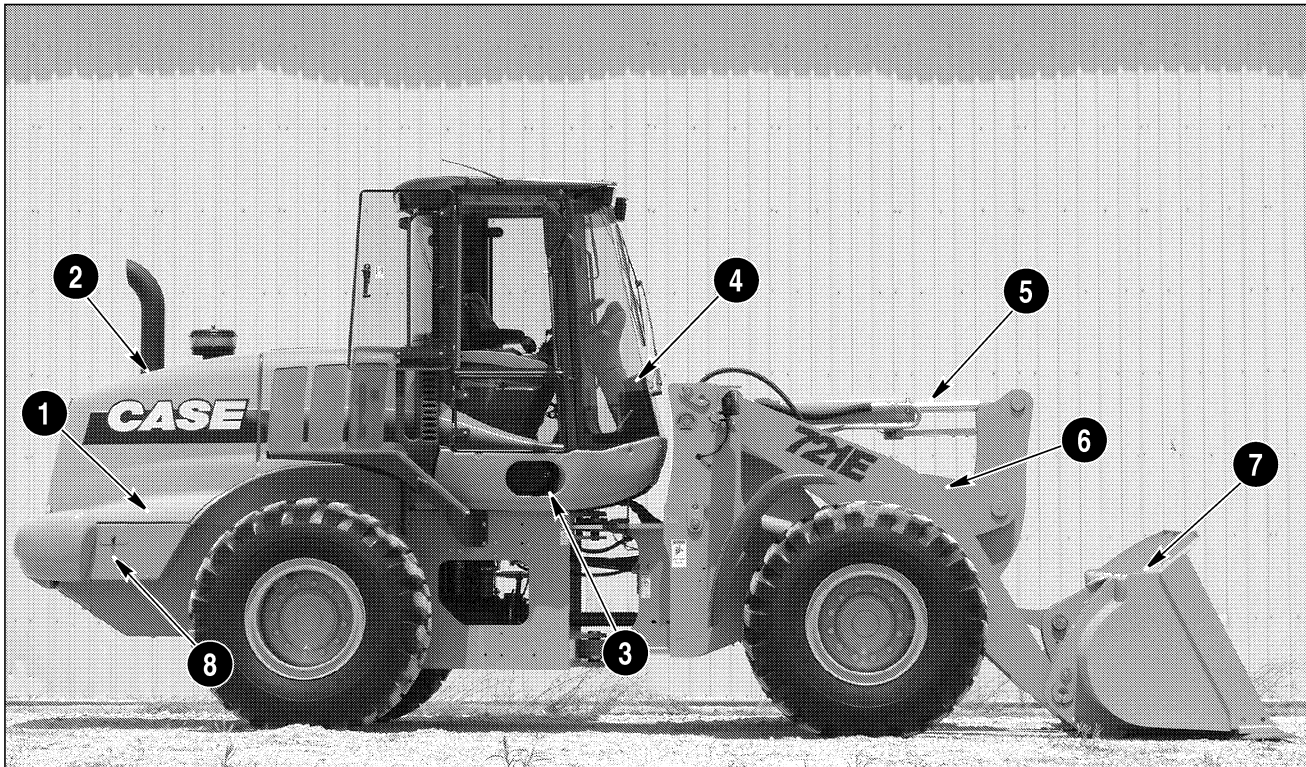


BD06F164

Figure 6

MACHINE COMPONENTS

- | | |
|----------------------------|------------------------|
| 1. CAB DOOR AND HAND HOLDS | 5. BUCKET CYLINDER |
| 2. STEPS | 6. ROPS CAB |
| 3. BUCKET | 7. ENGINE HOOD |
| 4. BELLCRANK | 8. LEFT BATTERY ACCESS |



BD06F166

Figure 7

MACHINE COMPONENTS

- | | | |
|-----------------------------------|--------------------|--------------------------------------|
| 1. Right Side Battery Compartment | 4. Front Console | 7. Bucket |
| 2. Engine Hood | 5. Bucket Cylinder | 8. Hood Switch and Disconnect Switch |
| 3. Cab Air Filter Access | 6. Loader Lift Arm | |

**IDENTIFICATION NUMBERS
MODEL, SERIAL NUMBER, AND YEAR OF
MANUFACTURE**

When ordering parts, obtaining information or assistance, always supply your dealer with the type and serial number of your machine or accessories.

Write the following information in the spaces below: The type, serial number and year of manufacture of your machine, accessories and the serial numbers of the various hydraulic and mechanical components.

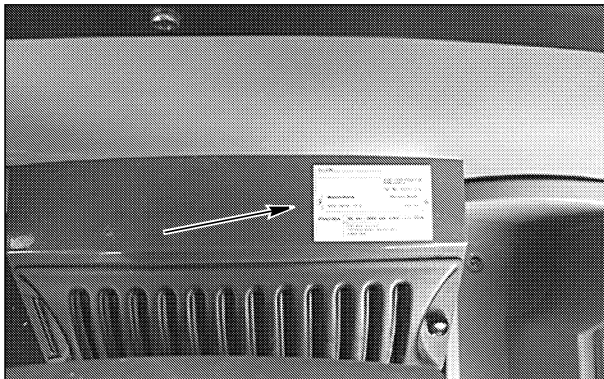
Make a record of the numbers and keep the record and your Manufacturer's Statement of Origin in a safe place.

PRODUCT IDENTIFICATION PLATE	
➤	_____ Model _____
➤	_____ Serial Number _____
➤	_____ Manufacturing Year _____

ENGINE	
➤	_____ Make and Model _____
➤	_____ Serial Number _____

COMPONENT SERIAL NUMBERS	
➤	_____ Transmission _____
➤	_____ Front and Rear Axle _____
➤	_____ ROPS CAB _____

ROPS CAB



BD06H167

Figure 8

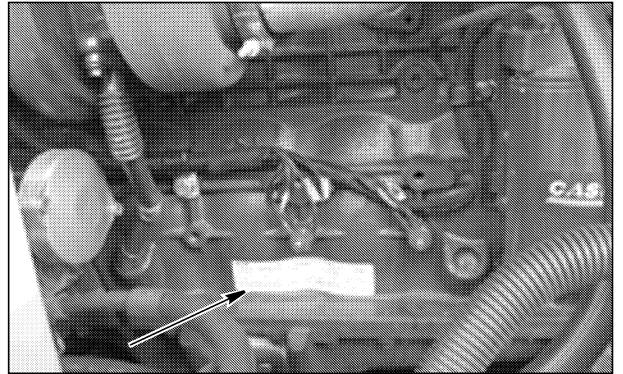
PRODUCT IDENTIFICATION NUMBER (P.I.N.)



BD06F166

Figure 9

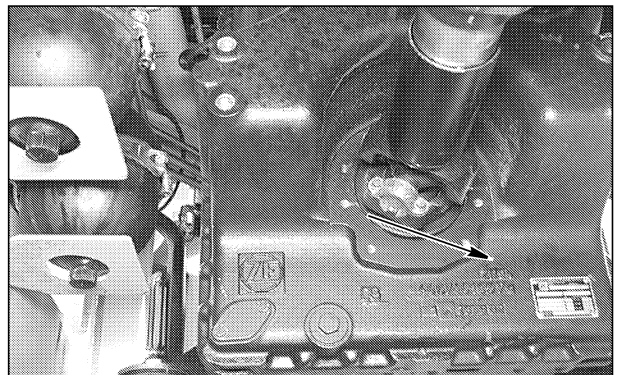
ENGINE



BD06F092

Figure 10

TRANSMISSION



BD02N124

Figure 11

AXLE



BD02N126

Figure 12



Suggest:

If the above button click is invalid.

Please download this document

first, and then click the above link

to download the complete manual.

Thank you so much for reading

NOTES

Chapter 2
SAFETY, AND DECALS
TABLE OF CONTENTS

SAFETY RULES 2-3

PERSONAL SAFETY 2-3

UTILITY SAFETY 2-4

 Personal 2-5

 General 2-5

 Mounting and Dismounting Precautions 2-5

 Starting and Stopping Precautions 2-5

 Operating Precautions 2-6

 Maintenance Precautions 2-7

 Fuel Handling Precautions 2-8

 Burn Prevention 2-8

 Hazardous Chemical Precautions 2-8

 Transporting Precautions 2-8

 Fire Extinguisher 2-8

 Seat Belt Precautions 2-9

 Specific Precautions to this Machine 2-10

DECALS 2-11

NOTES

<https://www.ebooklibonline.com>

Hello dear friend!

Thank you very much for reading.

Enter the link into your browser.

The full manual is available for immediate download.

<https://www.ebooklibonline.com>