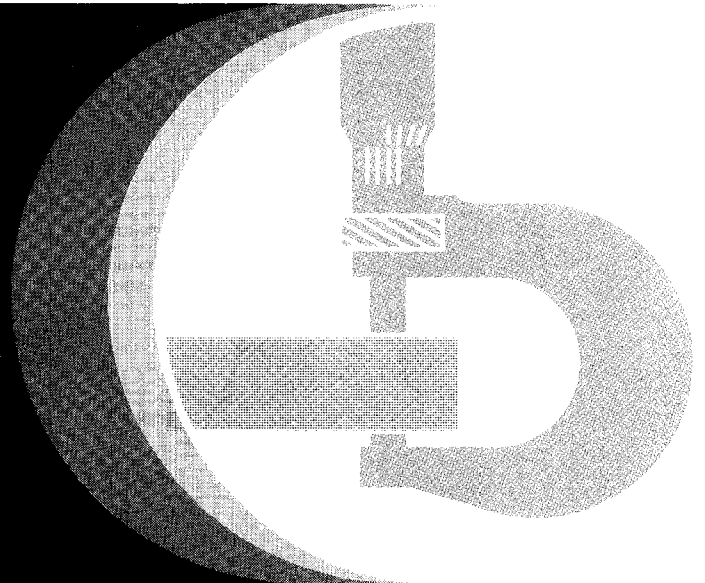


# Combines

932, 942, 952, 955, 965-H,  
968-H, 975, 975 Hydro/4, 985,  
985 Hydro/4, 1065, 1068-H, 1072,  
1075, 1075 Hydro/4,  
1085, 1085 Hydro/4



**John Deere Werke Zweibrücken**  
**TM-4387**

Printed in Germany (English) Rev.

# Combines 932, 942, 952, 955, 965, 965-H, 968-H, 975 975 Hydro/4, 985, 985 Hydro/4, 1065, 1068-H, 1072, 1075, 1075 Hydro/4, 1085 and 1085 Hydro/4

Technical Manual TM-4387

(1989)

## CONTENTS

SECTION	10	—	GENERAL
Group	00	—	Specifications and special tools
Group	05	—	General information
Group	10	—	Pre-delivery inspection, delivery service and after-sales inspection
Group	15	—	Lubrication and periodic service
Group	20	—	Engine and combine tune-up and adjustments
Group	25	—	Combine separation
SECTION	20	—	ENGINE REPAIR
Group	00	—	Specifications and special tools
Group	05	—	Cylinder head, valves, camshaft and balancer shafts (Engines 3179, 4239, 6359)*
Group	06	—	Cylinder head, valves and camshaft (Engine 6466)**
Group	10	—	Cylinder block, liners, pistons and connecting rods (Engines 3179, 4239, 6359)*
Group	11	—	Cylinder block, liners, pistons and connecting rods, (Engine 6466)**
Group	15	—	Crankshaft, main bearings and flywheel (Engines 3179, 4239, 6359)*
Group	16	—	Crankshaft, main bearings and flywheel (Engine 6466)**
Group	20	—	Lubrication system (Engines 3179, 4239, 6359)*
Group	21	—	Lubrication system (Engine 6466)**
Group	25	—	Cooling system (Engines 3179, 4239, 6359)*
Group	27	—	Fan drive countershaft
Group	26	—	Cooling system (Engine 6466)**
Group	30	—	Timing gear train (Engines 3179, 4239, 6359)*
SECTION	30	—	FUEL AND AIR REPAIR
Group	00	—	Specifications and special tools
Group	05	—	Air intake system
Group	10	—	Fuel system
Group	11	—	Fuel filter with water trap and electrical fuel transfer pump from serial no. 041201
Group	15	—	Roto Diesel fuel injection pump
Group	20	—	Roosa Master fuel injection pump
Group	25	—	Robert Bosch fuel injection pump
Group	30	—	Roosa Master fuel injection nozzles
Group	35	—	Robert Bosch fuel injection nozzles KDEL (21 mm)
Group	40	—	Speed control linkage
SECTION	40	—	ELECTRICAL SYSTEM
Group	00	—	Specifications and special tools
Group	05	—	Diagnosing malfunctions
Group	10	—	Electrical system components
Group	15	—	Wiring diagrams and wiring harnesses
Group	20	—	Starting motor (Bosch)
		—	Starting motor (John Deere)
Group	30	—	Alternator (Bosch)
Group	35	—	Alternator (Delcotron)
Group	40	—	Electrical leveling control system (sidehill combines)

- 
- SECTION 41 – MODIFIED ELECTRICAL EQUIPMENT ON  
COMBINES FROM SERIAL NO. 041201
- Group 05 – Wiring harnesses and connectors
  - Group 06 – Electrical circuits and wiring diagrams
  - Group 07 – Testing individual circuits
  - Group 10 – Starting motor
  - Group 15 – Alternator
  - Group 20 – Components
  - Group 25 – Shaft low speed monitor system
  - Group 30 – Harvestrak combine monitor – Functional description and tests
  - Group 35 – Harvestrake combine monitor – Repair
  - Group 40 – Electromagnetic transmission brake

- SECTION 50 – POWER TRAIN
- Group 00 – Specifications and special tools
  - Group 05 – Variable ground speed drive
  - Group 10 – "Posi Torq" ground drive
  - Group 15 – Engine clutch and clutch linkage (932, 942, 952)
  - Group 20 – Engine clutch and clutch linkage (955)
  - Group 25 – Engine Clutch (955 to 1085)
  - Group 26 – Clutch from Ser. No. 044137
  - Group 30 – Reverser clutch, control and linkage
  - Group 35 – Hydrostatic drive
  - Group 40 – Front axle (932, 942, 952)
  - Group 45 – Transmission and differential (955 to 1085 Hydro/4)
  - Group 50 – Final drives (955, 965, 975 to 1085 Hydro/4)
  - Group 51 – Rice drives
  - Group 55 – Final drive (sidehill combines)
  - Group 60 – Track system

- SECTION 60 – BRAKES AND REAR AXLE
- Group 00 – Specifications and special tools
  - Group 05 – Parking brake (932, 942, 952)
  - Group 10 – Parking brake (955 to 1085 Hydro/4)
  - Group 15 – Footbrakes (disk brakes acting on transmission)
  - Group 16 – Footbrakes (with integrated slave cylinder)
  - Group 20 – Footbrakes (disk brakes acting on front wheels)
  - Group 25 – Rear axle
  - Group 30 – Rear axle (sidehill combines)
  - Group 35 – V-support for wide rear axle

**<https://www.ebooklibonline.com>**

Hello dear friend!

Thank you very much for reading.

Enter the link into your browser.

The full manual is available for immediate download.

**<https://www.ebooklibonline.com>**

---

**SECTION 70 – HYDRAULIC SYSTEM**

- Group 00 – Specifications and special tools
- Group 05 – General information, diagnosing malfunctions
- Group 06 – Hydraulic symbols and system layout
- Group 10 – Pressure tests
- Group 15 – Hydraulic oil reservoir, filter, suction and pressure lines
- Group 20 – Hydraulic pump and flow divider
- Group 25 – Tandem (dual-gear) hydraulic pump
- Group 30 – Triple hydraulic pump
- Group 35 – Single and three spool control valves
- Group 40 – Seven spool control valve
- Group 41 – Seven spool control valve (from serial no. 041201)
- Group 45 – Hydraulic cylinders (up to a certain serial no.)
- Group 50 – Hydraulic cylinders (from a certain serial no.)
- Group 55 – Nitrogen accumulators
- Group 60 – Hydrostatic steering
- Group 65 – Hydraulic brakes
- Group 70 – Hydraulic clutch control
- Group 71 – Clutch operation with integrated slave cylinder
- Group 75 – Transmission brake
- Group 80 – Hydraulic components (sidehill combines)
- Group 85 – Hydraulic drive reel or belt pick-up system
- Group 90 – Hydraulic reverser motor

**SECTION 80 -- MISCELLANEOUS**

- Group 00 – Specifications and special tools
- Group 05 – General information
- Group 10 – Bearings and shafts
- Group 15 – Belts and chains

**SECTION 90 – OPERATOR'S CAB**

- Group 00 – Specifications and special tools
- Group 05 – Cab ventilation
- Group 10 – Air conditioning system
- Group 15 – Air conditioning system components
- Group 20 – Heater

**SECTION 95 – OPERATOR'S PLATFORM WITH SG-2 CAB ( – 044136 )**

- Group 00 – Specifications and special tools
- Group 05 – Cab ventilation
- Group 10 – Air conditioning system
- Group 15 – Compressor
- Group 20 – System components
- Group 25 – Cab heating system
- Group 30 – Operator's seat
- Group 35 – SG2 cab

**SECTION 96 – OPERATOR'S PLATFORM WITH SG-2 CAB (044137 – )**

- Group 05 – Cab ventilation
- Group 10 – Air conditioning system
- Group 15 – System service
- Group 20 – System testing
- Group 25 – Compressor
- Group 30 – System components
- Group 35 – Cab heating system
- Group 40 – Operator's seat
- Group 45 – SG2 cab

**SECTION 100 — CUTTING PLATFORM AND CORN HEAD**

- Group 00 — Specifications and special tools
- Group 05 — General information, diagnosing malfunctions
- Group 10 — Cutting platform and knife drive
- Group 11 — 200-Series Platform
- Group 15 — Variable reel speed drive
- Group 20 — Corn head
- Group 25 — Corn head gear case

**SECTION 110 — FEEDER HOUSE**

- Group 05 — General information, diagnosing malfunctions
- Group 10 — Feeder drive
- Group 15 — Feeder house (with integrated cutting platform)
- Group 20 — Feeder house (with quick-tach cutting platform)
- Group 21 — Feeder house (with quick-tach cutting platform; from serial no. 041201)
- Group 25 — Chain transmission — cutting platform drive
- Group 30 — Hydraulic reverser

**SECTION 120 — SEPARATOR AND CLEANING UNIT**

- Group 00 — Specifications and special tools
- Group 05 — General information, diagnosing malfunctions
- Group 10 — Separator drive
- Group 15 — Threshing cylinder, variable cylinder drive
- Group 20 — Cylinder drive reduction gear (up to serial no. 039 866)
- Group 21 — Cylinder drive reduction gear (from serial no. 039 867)
- Group 25 — Concave
- Group 30 — Beater, beater variable drive
- Group 35 — Cross shaker
- Group 40 — Straw walkers, cleaning shoe with sieves and fan

**SECTION 130 — ELEVATORS, GRAIN TANK AND GRAIN TANK UNLOADING AUGERS**

- Group 05 — General information, diagnosing malfunctions
- Group 10 — Elevator and auger drives
- Group 15 — Clean grain auger and elevator
- Group 20 — Lower tailings auger, elevator and upper auger
- Group 25 — Grain tank leveling auger and unloading auger
- Group 30 — Outer unloading auger and housing

**SECTION 140 — SPECIAL EQUIPMENT**

- Group 00 — Specifications and special tools
- Group 05 — Straw chopper with centrifugal and electric clutch
- Group 10 — Straw chopper with direct drive
- Group 15 — Straw spreader

**GENERAL**

Directions, such as right-hand, left-hand, front or rear, always stand in relation to the direction of combine travel.

All information, illustrations and specifications in this technical manual are based on the latest status at time of publication and can be changed at any time without prior notice.

# Group 05 General Information

## Serial Numbers

*NOTE: Please quote all the serial numbers stamped in the appropriate serial number plate when ordering replacement parts for your combine, combine engine and special equipment (e.g. operator's cab, cutting platform trailer).*

The combine serial number is stamped into the name plate on the right-hand side of the operator's platform (see fig. 1).

The serial number is also stamped into the right-hand angle frame of the combine if the name plate gets lost for any reason (see fig. 2).

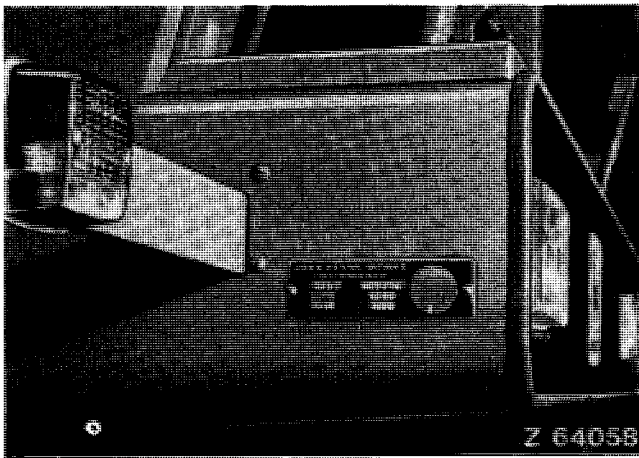


Fig. 1 — Serial Number Plate on Operator's Platform

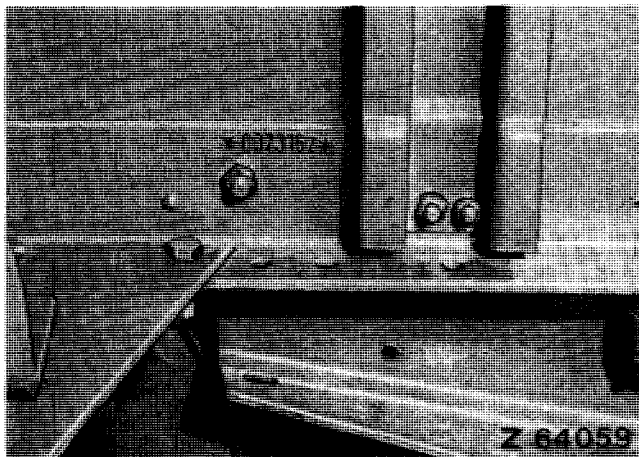


Fig. 2 — Serial Number Stamped into Angle Frame

The serial number of a John Deere engine is stamped into the name plate near the starting motor.

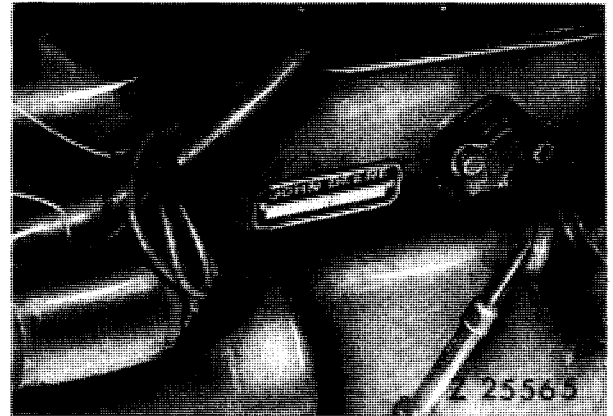


Fig. 3 — Engine Serial Number

The serial number of the cutting platform is stamped into a plate on the outer right-hand side panel of the platform (see fig. 4).\*

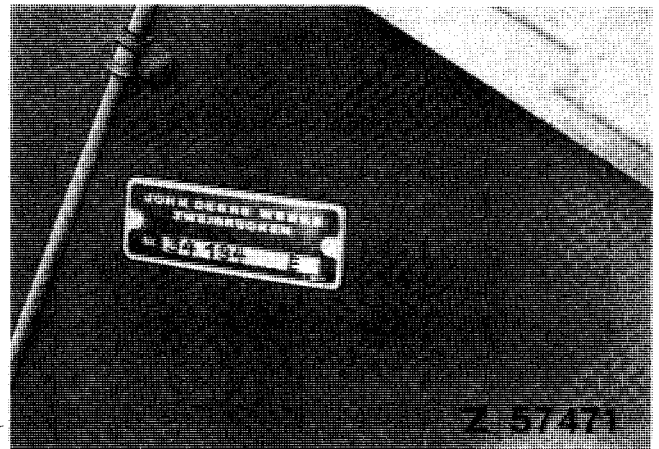


Fig. 4 — Serial Number of Cutting Platform (14 ft. cutting platform shown)

\* The various sized cutting platforms are marked as follows:

B 8 ft. 5 in.	D 12 ft.	F 16 ft.
C 10 ft.	E 14 ft.	G 18 ft.

The corn head serial number is stamped into a plate on the right-hand side below the drive guard (see fig. 5).

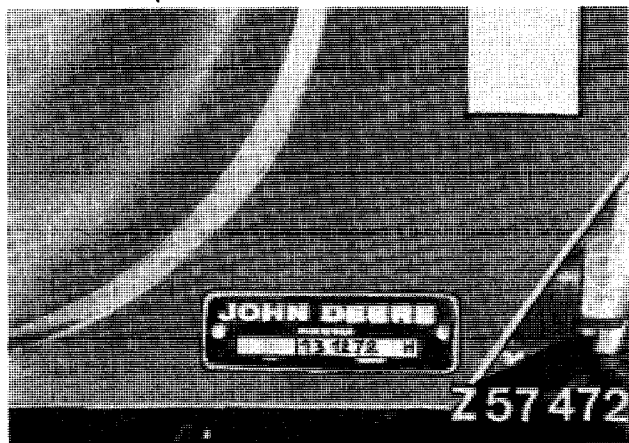


Fig. 5 – Corn Head Serial Number

The cutting platform trailer serial number is stamped into the name plate located on the right-hand side of the trailer drawbar behind the towing eye (see fig. 6).

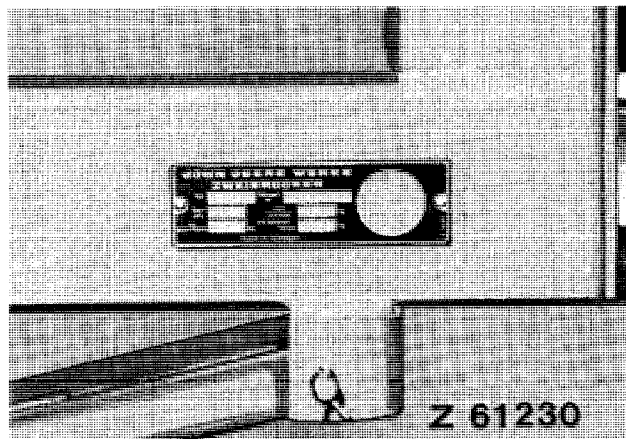


Fig. 6 – Serial Number of Cutting Platform Trailer

The operator's cab serial number is stamped into the name plate located on the left-hand inner side panel of cab (see figs. 7 and 8).

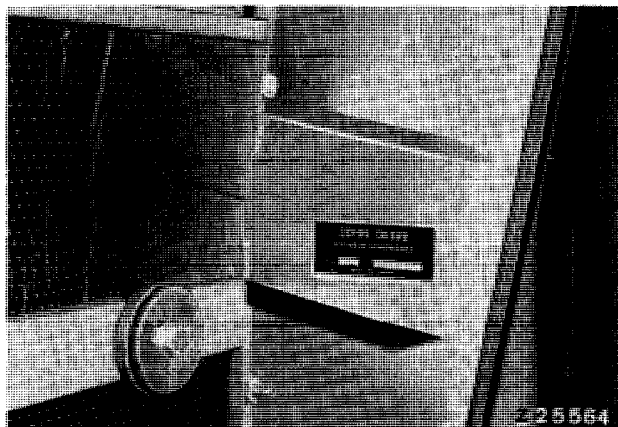


Fig. 7 – Standard Operator's Cab Serial Number

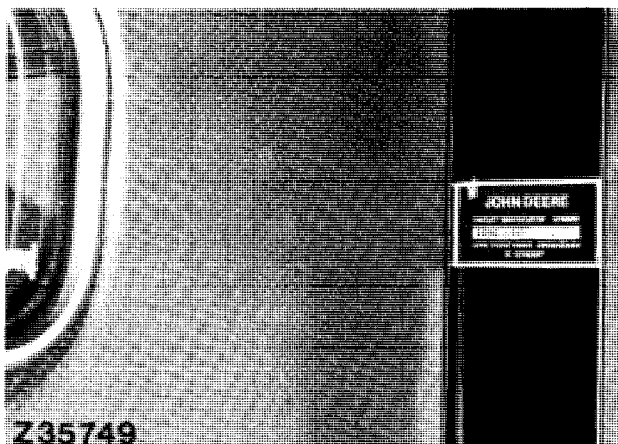


Fig. 8 – SG2 Cab Serial Number

The fuel injection pump type and serial number is stamped into the name plate located on pump housing (see figs. 9, 10, 11).

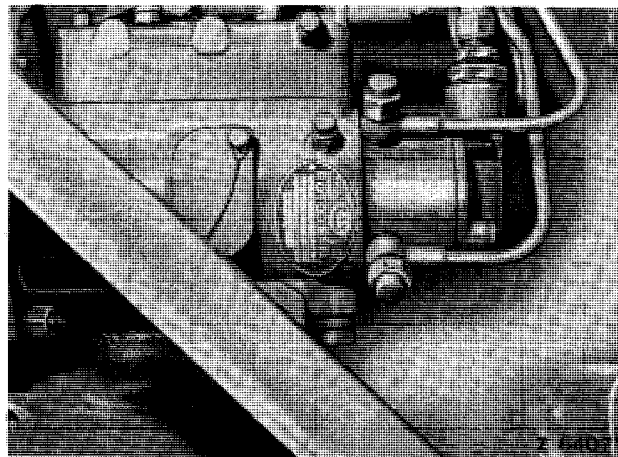


Fig. 9 – Serial Number of Roto-Diesel Fuel Injection Pump

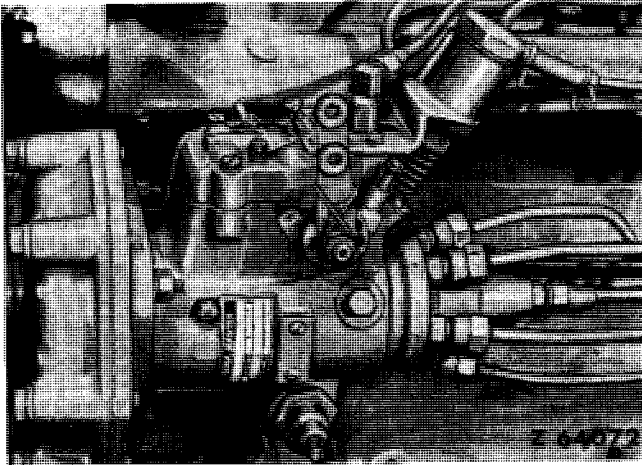


Fig. 10 – Serial Number of Roosa-Master Fuel Injection Pump

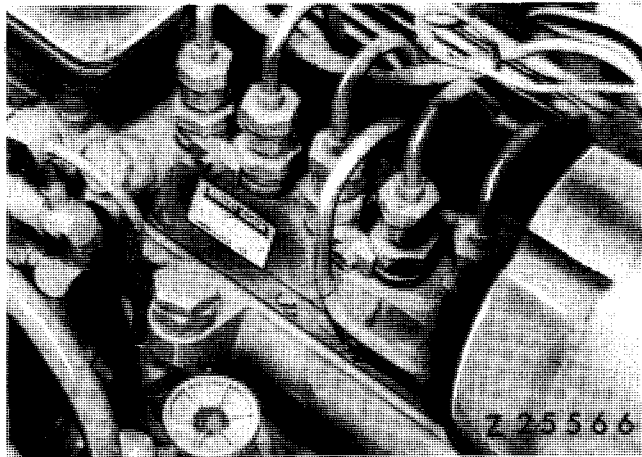


Fig. 11 – Serial Number of Robert Bosch Fuel Injection Pump

The track assembly serial number is stamped into the outer side of track frame below the front idler bracket.

Left-hand track assemblies are numbered with an odd serial number. Right-hand track assemblies have an even serial number (see fig. 12).

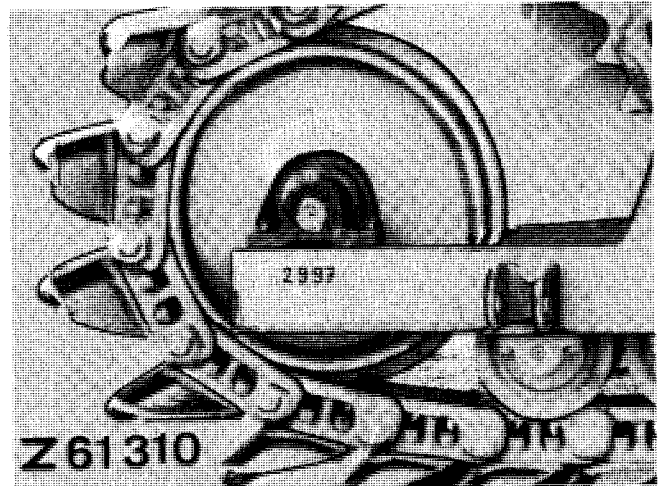


Fig. 12 – Serial Number of Track Assembly, L.H. Side

The straw chopper serial number plate is attached to the right-hand side of the chopper housing.

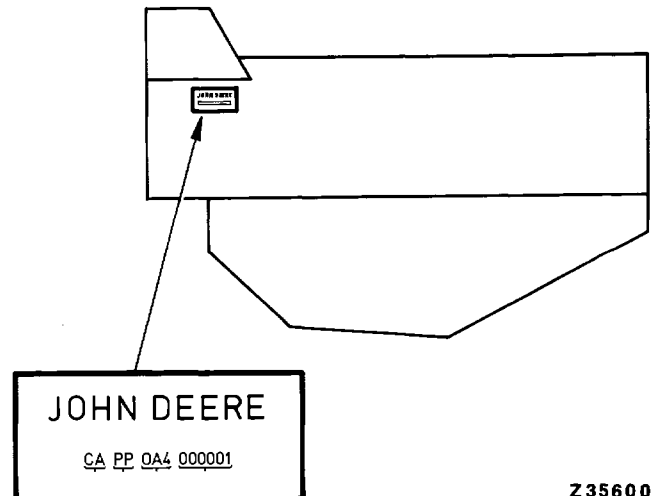


Fig. 13 – Straw Chopper Serial Number

### Model numbers

The fuel injection pump, injection nozzles, alternator, starting motor and the hydraulic pump have model numbers to facilitate identification of different makes of a given unit.

### Specifications

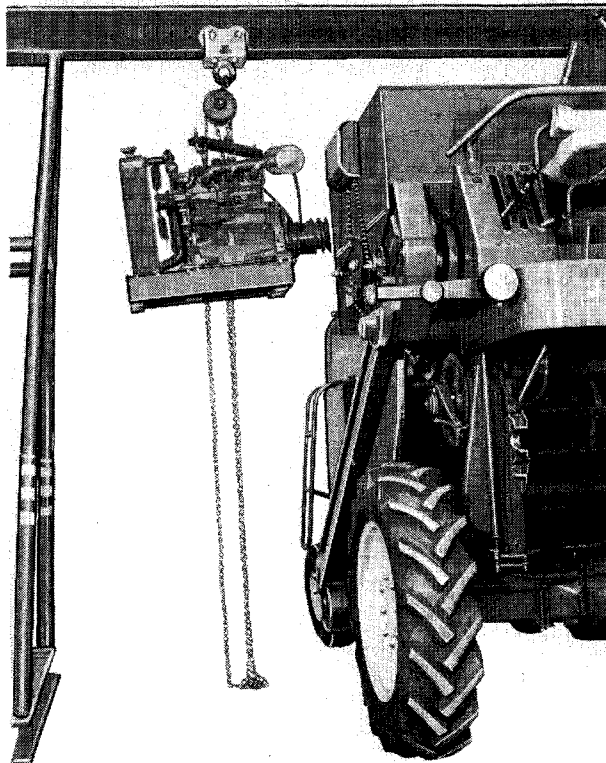
The relevant operator's manual or the different sections of this Technical Manual contain all the necessary specifications.

## Group 25 Separation

### Removal and Installation of Engine – Combines 932 and 942

#### General Information

A hoist is required for removing engine from combine. The hoist should be high enough to lift the engine approx. 150 mm (6 in.) and to remove it sideways from combine (see fig. 1).



Z 50870

Fig. 1 – Hoist (Engine Being Removed Sideways from Combine)

**IMPORTANT!** Before removal mark position of engine on combine. Mark position on combine and engine mountings both laterally and longitudinally. These marks are essential for correct alignment when reinstalling the engine.

For most service operations the engine need not be removed. Remove the engine in case of major engine overhaul or for repairs to the crankshaft.

#### Removal

Before removing engine carry out the following:

First disconnect ground cable of battery.

Remove right-hand engine cover.

Disconnect wiring harness at connector 1 (fig. 2).

Loosen fuel line clamps of fuel lines on combine.

Remove three or four attaching cap screws 2 (depending on combine model) from right-hand engine carrier.

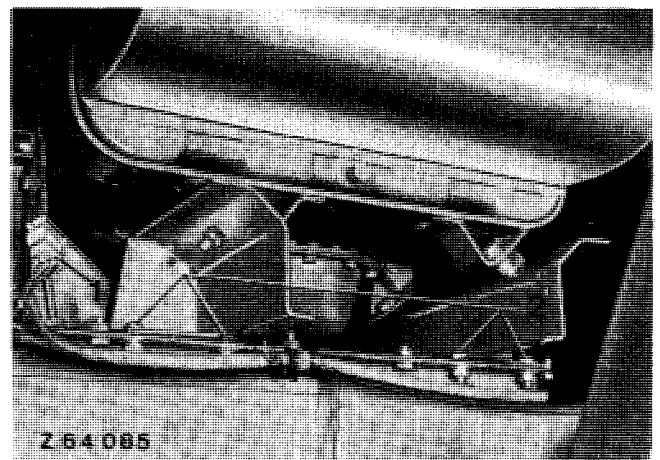


Fig. 2 – Removing Engine Connections on Radiator Side (Combine 942)

- 1 Wiring harness
- 2 Attaching cap screws of engine carrier

Remove fuel suction and return hose 1 (fig. 3) from fuel transfer pump and return line.

Remove engine oil drain hose 7 from left-hand combine side panel (fig. 5).

Disconnect positive cable 3 (fig. 3) from battery. Remove guard 5. Loosen attaching cap screws 2 of hydraulic pump bracket. Take off hydraulic pump drive belt and remove hydraulic pump with bracket from engine.

Remove breather tube clamp 4 from engine block and pull breather tube out of rocker cover (necessary for later installation of lifting eyes).

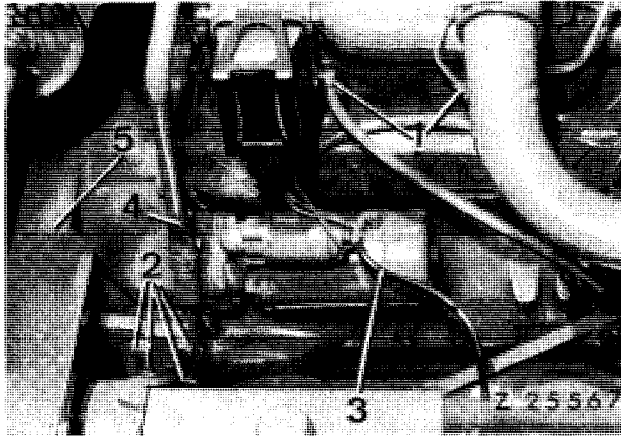


Fig. 3 – Removing Various Engine Connections Near Hydraulic Pump and Starting Motor (942 Shown)

- 1 Disconnect fuel hoses here
- 2 Attaching cap screws of hydraulic pump bracket
- 3 Positive cable
- 4 Breather tube clamp
- 5 Guard

Disconnect throttle and stop control linkage 1 (fig. 4) at ball joint 2 of fuel injection pump (remove wire clip or hex. nut).

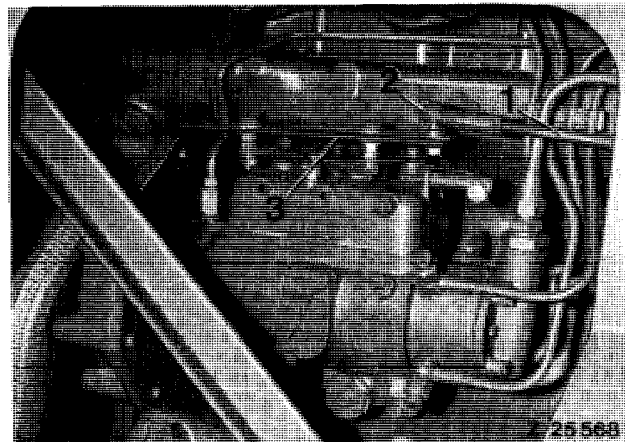


Fig. 4 – Removing Various Engine Connections Near Fuel Injection Pump (942 Shown)

- 1 Throttle and stop control linkage
- 2 Ball joint
- 3 Throttle and stop adjusting plate

Remove unloading auger drive belt 1 (fig. 5) from engine drive pulley and shift control lever of unloading auger into operating position.

Slacken ground drive belt 2 (variable ground speed drive) and remove from engine drive pulley.

Remove flat belt 3 and hydraulic pump drive belt 6.

Remove grain tank braces 5 and attaching cap screws 4 from engine carrier angle frame.

Remove flat belt tension roller from tensioner bracket.

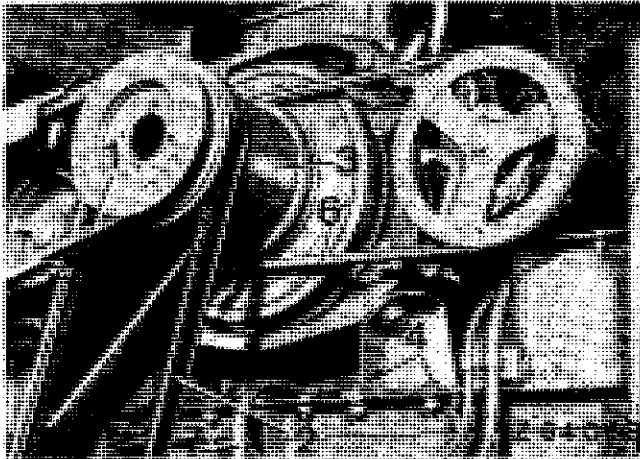


Fig. 5 — Removing Various Engine Connections Near Drive Pulley (942 Shown)

- 1 Unloading auger drive belt
- 2 Ground drive belt
- 3 Flat belt
- 4 Attaching cap screws of engine carrier angle frame
- 5 Grain tank braces
- 6 Hydraulic pump drive belt
- 7 Engine oil drain hose

Attach lifting eyes to engine (see fig. 6 and Special Tools) and by means of a suitable hoist lift up complete engine approx. 150 mm (6 in.). Then slide engine to the right out of combine.

**IMPORTANT!** On the combine 942 there are shims located under the engine carrier. Attach shims to specific carrier when engine is raised. This to ensure that original shim packs are placed under engine carriers when engine is reinstalled. This is important for engine alignment.

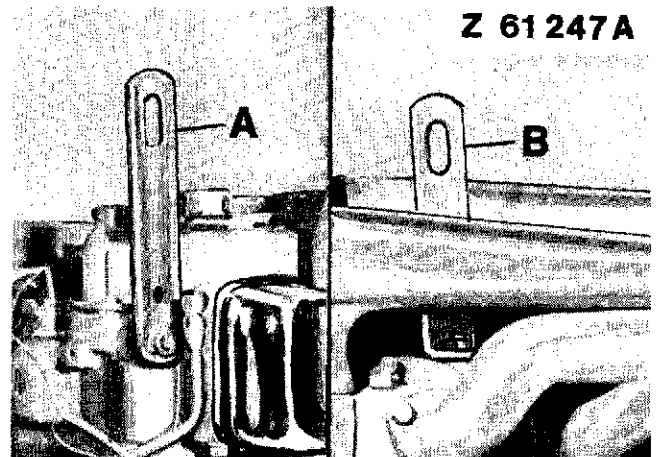


Fig. 6 — Attaching Lifting Eyes

- A Lifting eye JD 244-1
- B Lifting eye JD 244-2

## Installation

When installing the engine, reverse removal procedure.

**IMPORTANT!** Make sure when aligning engine that marks made on engine carrier and combine are aligned on both sides of engine.

It is absolutely essential to make sure that engine is correctly aligned for correct flat belt travel. Note and comply with instructions given under "Flat Belt Travel Path" in Section 120, Group 10.

Check crankcase oil and coolant level.

Bleed fuel system. See operator's manual for details.

Make a test run of the engine.

After the test run check all attaching cap screws for tightness. Then check all drive belts for correct adjustment, true running and tension.

Check engine speeds to make sure that beater is running at specified speed of  $850 \pm_{0}^{30}$  rpm. If necessary adjust throttle and stop control linkage.

## Removal and Installation of Engine – Combines 952 and 955

### General Information

A hoist is required for removing engine from combine. The hoist should be high enough to lift the engine approx. 150 mm (6 in.) and to remove it sideways from combine (see fig. 7).

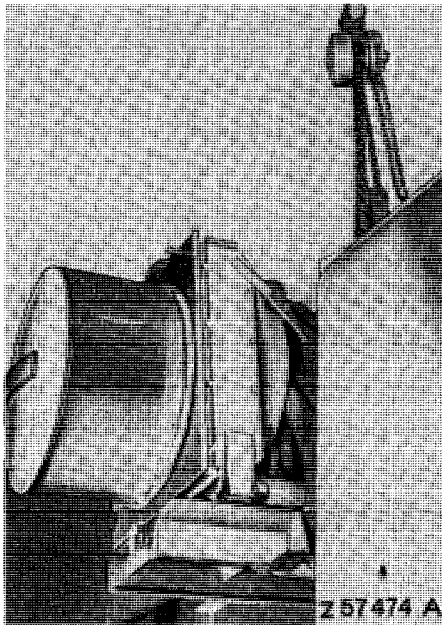


Fig. 7 – Engine Being Removed Sideways from Combine

### Removal

**NOTE:** For most service operations the engine need not be removed. Remove the engine in case of major engine overhaul or for repairs to the crankshaft.

**IMPORTANT!** Before removal mark position of engine on combine. Mark position on combine and engine mountings both laterally and longitudinally. These marks are essential for correct alignment when reinstalling the engine.

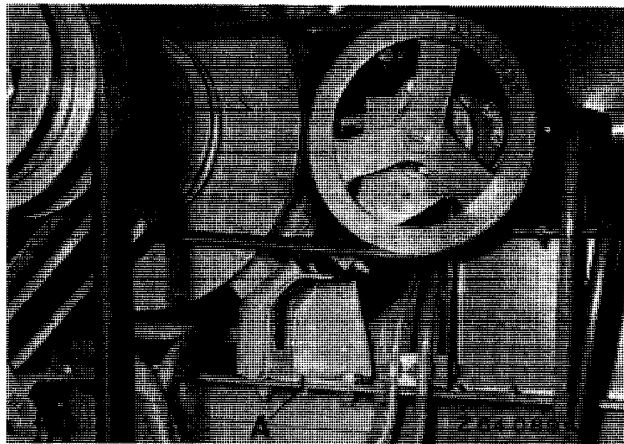


Fig. 8 – Marking Position of Engine to Combine

A Mark between engine carrier and combine frame

### BEFORE REMOVING ENGINE CARRY OUT THE FOLLOWING:

First disconnect ground cable and then positive cable of battery. Disconnect engine wiring harness at disconnecting point A 29 (see wiring diagram in section 40 and fig. 9).

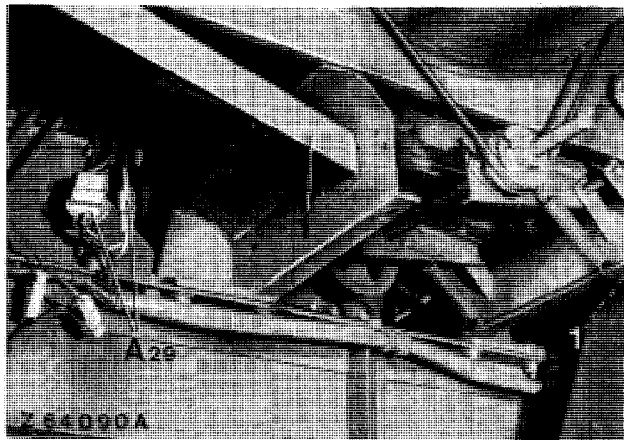


Fig. 9 – Engine Wiring Harness Disconnecting Point

A29 Engine wiring harness disconnecting point  
1 Engine carrier supports

On engines with a Thermostart cold weather starting aid, disconnect cable from burner at intake manifold. Remove both engine carrier supports 1 (fig. 9) and right-hand engine guards. Also remove the right-hand rear engine covers. Disconnect fuel suction and return lines from fuel transfer pump and return line.

Loosen square-headed hydraulic pump drive belt adjusting screw B. Remove V-belt A from pulley and finally remove hydraulic pump complete with adjusting lever C from bracket after having removed clamping screw D.

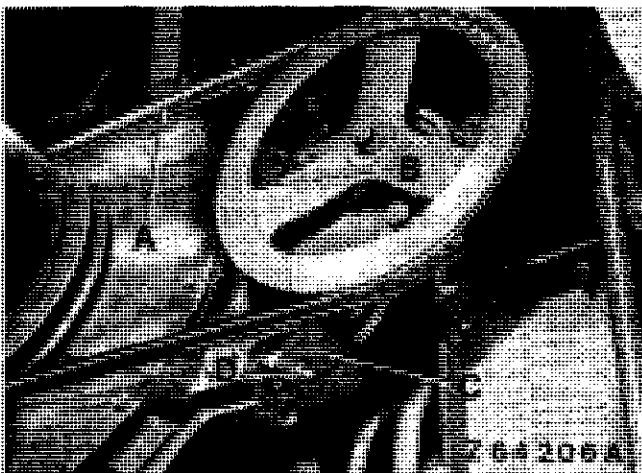


Fig. 10 — Removal of Hydraulic Pump (955 Shown)

- A V-belt
- B Adjusting screw
- C Adjusting lever
- D Clamping screw

Remove engine breather hose 1 (fig. 12) from left-hand side of engine.

Remove engine oil drain hose 2 (fig. 12) from left-hand side of combine.

Disconnect throttle and stop control linkage 1 (fig. 11) at ball joint 2 from fuel injection pump (disconnect wire clip).

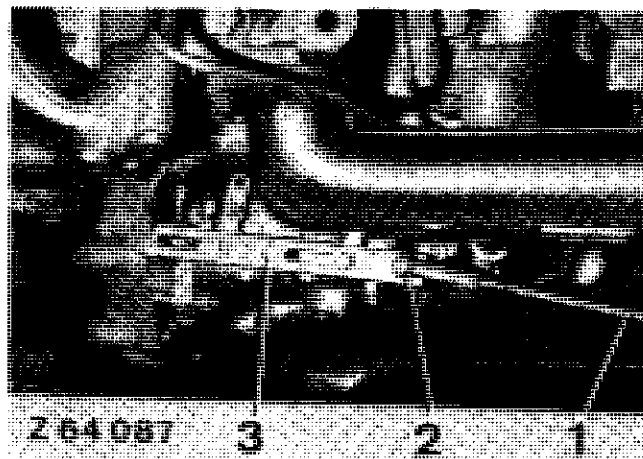


Fig. 11 — Removing Various Engine Connections Near Fuel Injection Pump

- 1 Throttle and stop control linkage
- 2 Ball joint
- 3 Throttle and stop adjusting plate

Remove unloading auger drive belt 4 (fig. 12) from engine drive pulley.

Shift control lever of unloading auger into operating position.

Slacken ground drive belt 5 and remove from engine drive pulley.

Remove flat belt 6 from engine drive pulley after having removed belt guide.

Remove hydraulic pump drive belt 7 from engine drive pulley.

Remove flat belt tension roller from tensioner bracket.

Disconnect grain tank braces 8 from engine carrier.

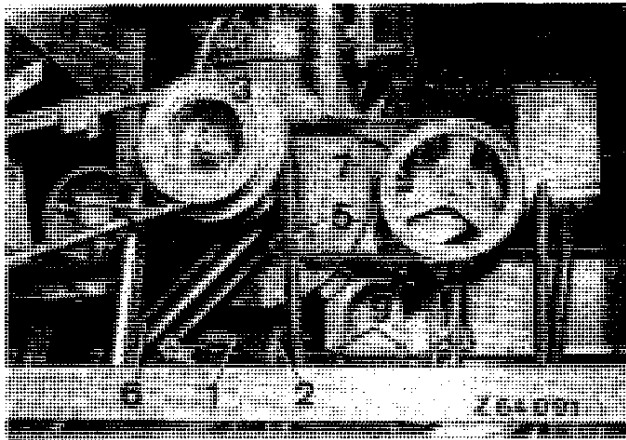


Fig. 12 – Removing Various Engine Connections Near Drive Pulley

- 1 Engine breather hose
- 2 Engine oil drain hose
- 3 Breather tube
- 4 Unloading auger drive belt
- 5 Ground drive belt
- 6 Flat belt
- 7 Hydraulic pump drive belt
- 8 Grain tank braces
- 9 Attaching cap screws of engine carrier supports

Remove attaching cap screws 9 of engine carrier supports.

Attach lifting eyes to engine (see fig. 13 and Special Tools). By means of a suitable hoist lift up complete engine approx. 150 mm (6 in.) and slide engine to the right out of combine.

**IMPORTANT!** There are shims located under the engine carrier. Attach shims to specific carrier when engine is raised. This to ensure that original shim packs are placed under engine carriers when engine is reinstalled. This is important for engine alignment.

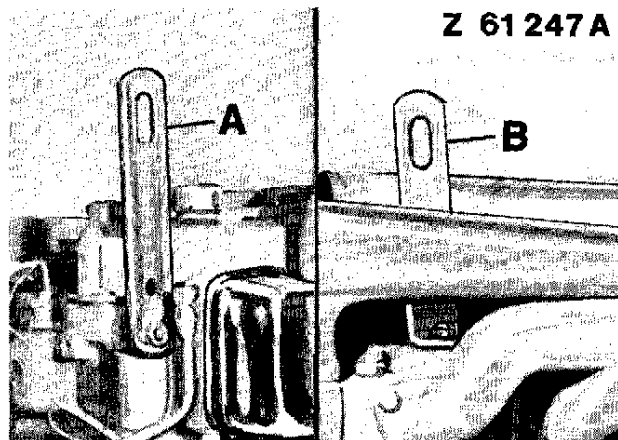


Fig. 13 – Attaching Lifting Eyes

- A Lifting eye JD 244-1
- B Lifting eye JD 244-2

## Installation

When installing the engine, reverse removal procedure.

**IMPORTANT!** Make sure when aligning engine that marks made on engine carrier and combine are aligned on both sides of engine.

Check crankcase oil and coolant level.

Bleed fuel system. See operator's manual for details.

Make a test run of the engine.

After the test run check all attaching cap screws for tightness. Then check all drive belts for correct adjustment, true running and tension.

Check engine speeds to make sure that beater is running at specified speed of  $850 \pm 30$  rpm. If necessary, adjust throttle and stop control linkage.

At full load speed adjusting plate 3 should lightly contact stop. If not, adjust control linkage 1 (fig. 11).

## Removal and Installation of Engine – Combines 965 – 985\* and 1065 – 1075 Hydro/4

### General Information

A hoist is required for removing engine from combine. The hoist should be high enough to lift the engine approx. 200 mm (8 in.) and to remove it sideways from the combine (see fig. 14).

*NOTE: For most service operations the engine need to be removed. Remove the engine in case of major engine overhaul or for repairs to the crankshaft.*

Always remove engine from right-hand side of combine.

### Removal

*NOTE: When removing engine, it is not necessary to mark position of engine carrier to combine frame.*

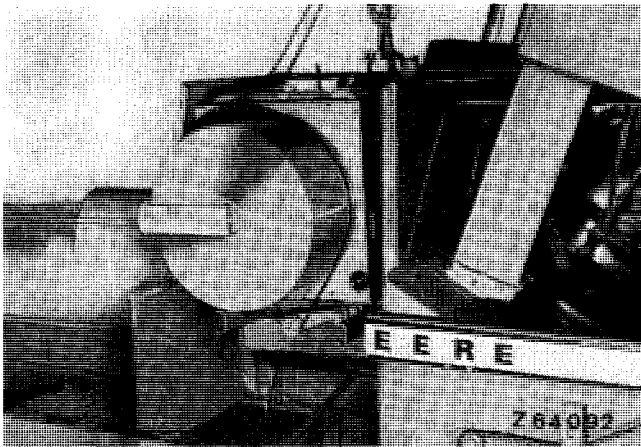


Fig. 14 – Engine Being Removed Sideways from Side of Combine

Carry out the following preparatory work to remove engine:

**IMPORTANT!** Lower feeder conveyor to the ground (hydraulic system now pressure-free).

Disconnect ground (-) and positive (+) cable at battery.

\* up to Serial No. 018432

### WORK ON LEFT-HAND SIDE OF COMBINE

Remove lower side panel.

Remove beater drive belt guard.

Slacken transmission drive belt 1 (figs. 16 and 17) at tensioner 2.

Remove power band guide 3.

Remove clamp of engine breather tube 4 and pull out tube from O-ring guide (from left-hand engine mouting frame).

Remove cotter pin and pin 5 (fig. 17) from connecting plates 8 between both arms of cutting platform throw-out device.

Using a chisel remove cotter pin (D, fig. 15) so that later, connecting link (A) can be removed from arm (C).

Remove cotter in (B, fig. 15) and remove arm (C) to the left and at the same time disconnecting link (A) from arm.

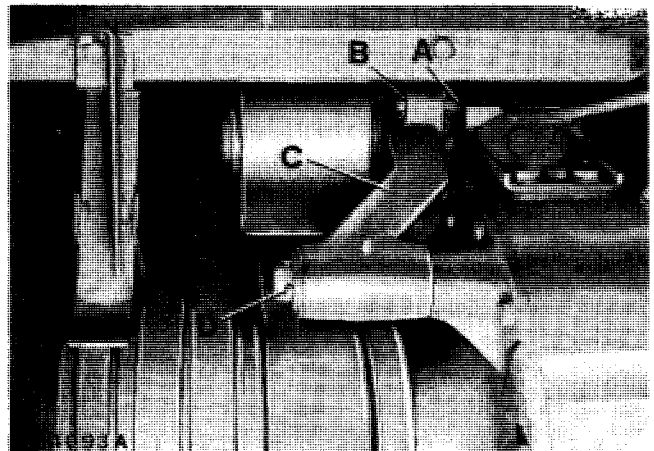


Fig. 15 – Removing Cutting Platform Throw-Out Device

- A Link
- B Cotter pin
- C Arm
- D Cotter pin

**NOTE:** Do not disconnect connecting link (A) at lifting plate.

Remove power band guide bracket 6 (fig. 16) from left-hand engine mounting bracket 7.

Disconnect hydraulic line and battery cable clamps from left-hand engine mounting bracket.

Disconnect all belts from engine drive pulley.

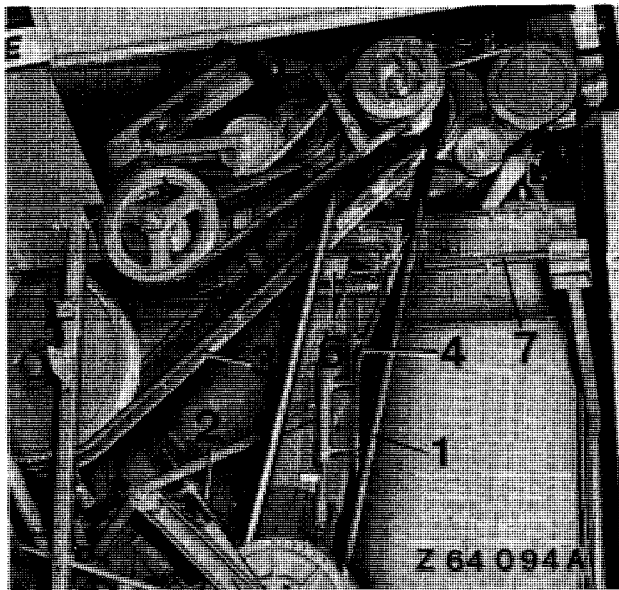


Fig. 16 – Preparing to Remove Engine (Combines with Variable Ground Speed Drive)

- 1 Transmission drive belt
- 2 Tensioner
- 3 Power band guide
- 4 Engine breather tube
- 6 Bracket
- 7 Engine mounting bracket

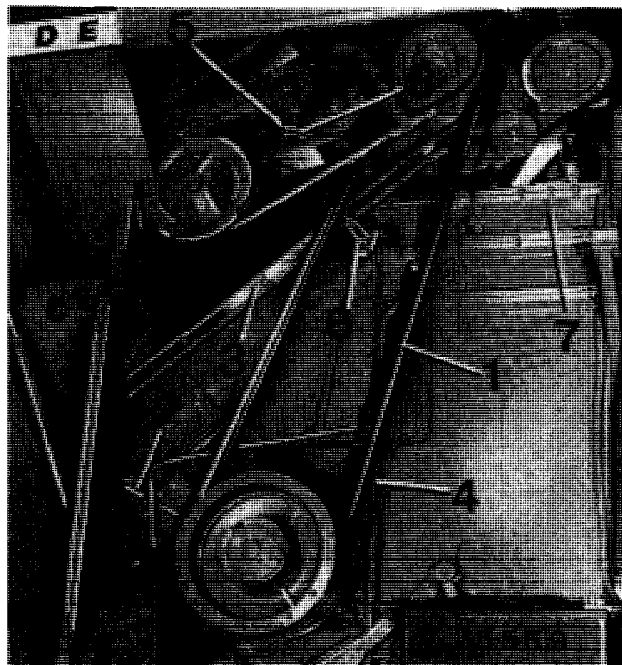


Fig. 17 – Preparing to Remove Engine (Combines with Posi-Torq Drive)

- 1 Transmission drive belt
- 2 Tensioner
- 3 Power band guide
- 4 Engine breather tube
- 5 Pin
- 6 Bracket
- 7 Engine mounting bracket
- 8 Connecting plates

On combines with hydrostatic drive, additionally carry out the following: Remove drive belt 8 (fig. 18) of hydrostatic drive variable pump after shifting tensioner pulley 9 by means of tensioner 10. Disconnect the two oil hoses from lines at points 11 and 12.

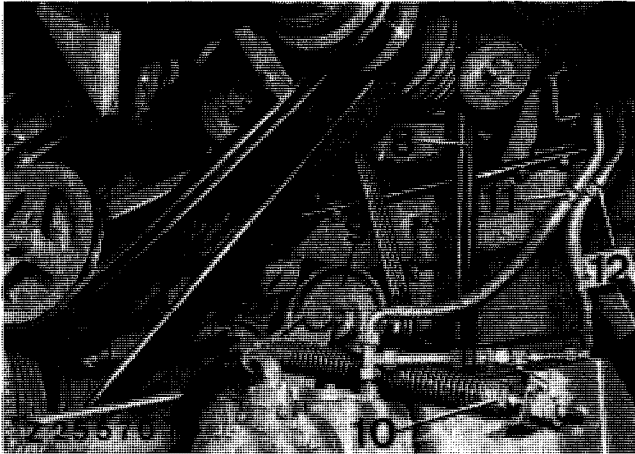


Fig. 18 — Preparing to Remove Engine (Combine with Hydrostatic Drive)

- 8 Drive belt
- 9 Tensioner pulley
- 10 Tensioner
- 11 Disconnect point
- 12 Disconnect point

Remove air intake pipe 14 (fig. 19) and muffler 12 with exhaust pipe 13.

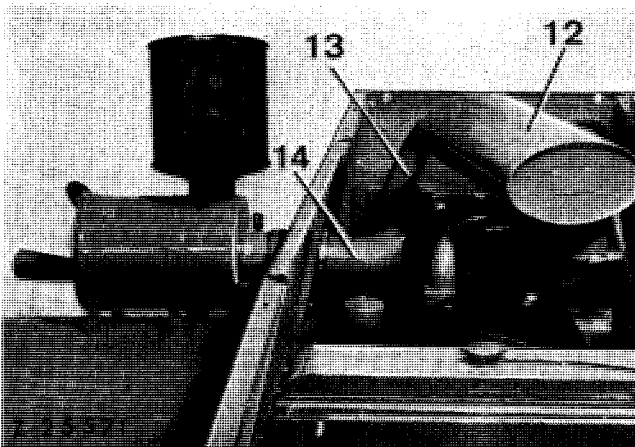


Fig. 19 — Preparing to Remove Engine (975 Combine Shown)

- 12 Muffler
- 13 Exhaust pipe
- 14 Air intake pipe

Disconnect fuel inlet line 15 (fig. 20) leading to fuel filter and fuel return line 16 leading to fuel tank at engine.

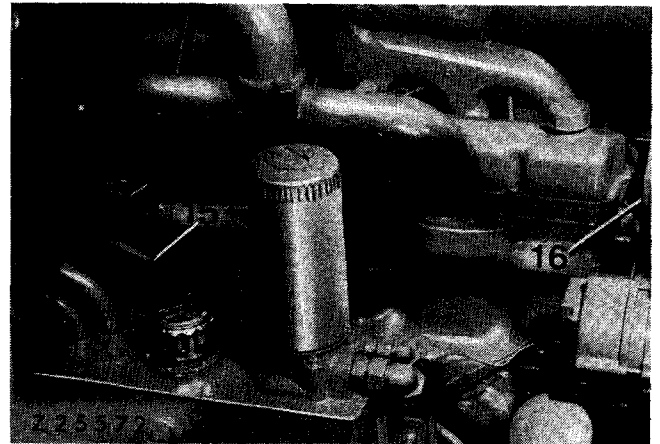


Fig. 20 — Preparing to Remove Engine

- 15 Fuel inlet line
- 16 Fuel return line

Remove bracket between hydraulic tank and rear panel of engine.

#### WORK AT GRAIN TANK REAR PANEL AREA

At control valve remove both inspection plates from rear panel of grain tank and from grain tank floor.

**IMPORTANT!** Thoroughly clean control valve area.

Remove ball joints from rocker arms 4 (figs. 21 and 22) on control valve.

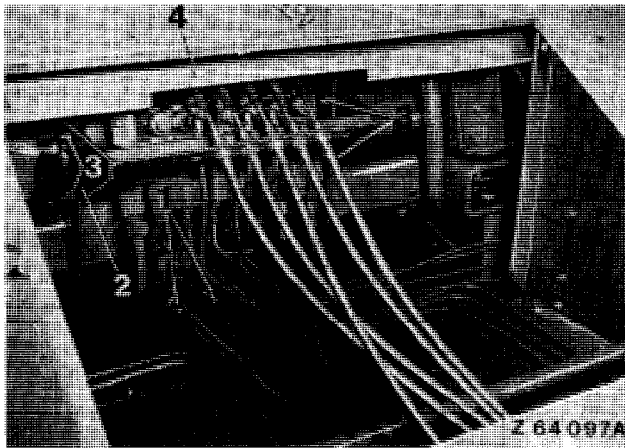


Fig. 21 — Preparing to Remove Engine at Control Valve

- 1 Hose connections
- 2 Bowden cable bracket
- 3 Cap screws
- 4 Rocker arm ball joints

Disconnect bowden cable bracket 2 from control valve by removing the four cap screws 3.

Disconnect both hose connections 1 (fig. 21) leading to the steering pump. Seal openings immediately with plastic plugs.

*NOTE: Mark position of hydraulic lines to control valve before removal.*

Disconnect all hydraulic lines to control valve and seal openings immediately with plastic plugs or caps.

Disconnect speed control and shut-off rod 5 from bracket 7 (fig. 22).

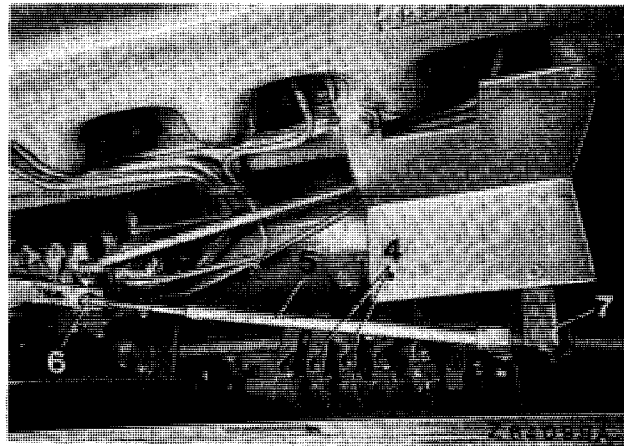


Fig. 22 — Preparing to Remove Engine at Roto-Diesel Fuel Injection Pump

- 4 Rocker arm ball joints
- 5 Speed control and shut-off rod
- 6 Ball joint
- 7 Bracket

After having removed wire seal, disconnect ball joint 6 and remove speed control rod from fuel injection pump.

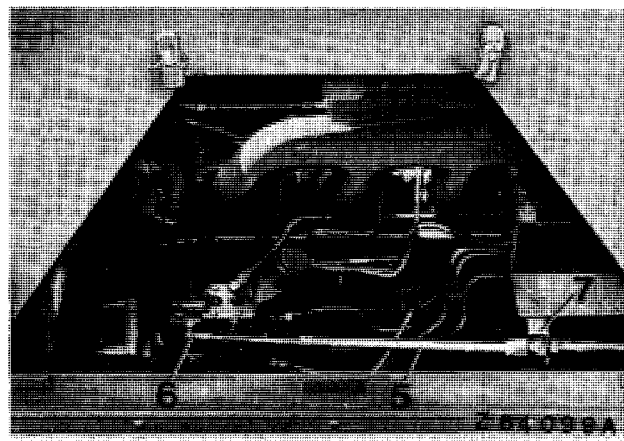


Fig. 23 — Preparing to Remove Engine at Roosa-Master Fuel Injection Pump

- 5 Speed control and shut-off rod
- 6 Ball joint
- 7 Bracket

**WORK ON RIGHT-HAND SIDE OF COMBINE**

Remove engine cover. Remove rear triangular plate from rear engine panel.

Disconnect the long hinged cover below the John Deere sign at the three hinges and remove.

Remove the four screws and lift off cover with John Deere sign.

Remove operator's seat. Disconnect plug 8 (fig. 24) after removing attaching clamp.

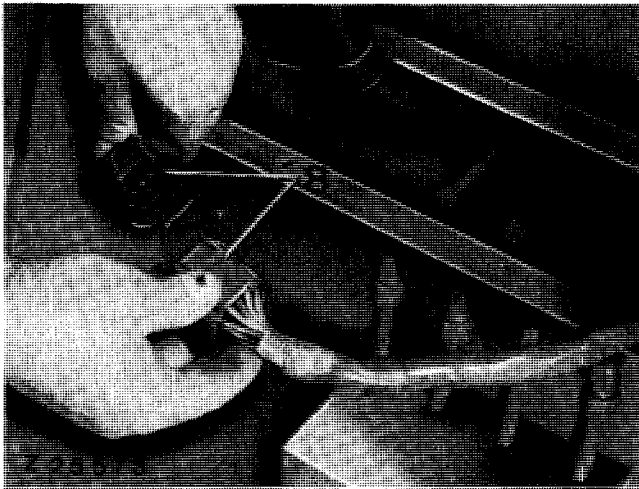


Fig. 24 — Wiring Harness Plug next to Operator's Seat (Seat Removed)

8 Wiring harness plug

Disconnect wiring harness plug 8 (fig. 24) at right-hand engine mounting bracket.

Disconnect cable to electrical fuel transfer pump at plug. Disconnect straw walker warning device cable at plug behind engine.

Loosen clamp 9 (fig. 25) attaching hydraulic line 13 of beater variable drive. Disconnect hydraulic line 13 at accumulator of variable cylinder drive. Disconnect engine floor plate at the three cap screws 14 at right and left-hand side of engine mounting bracket. Remove fuel tank brace 12 from mounting bracket.

Remove the six attaching screws 15 of right and left-hand engine mounting bracket 10.

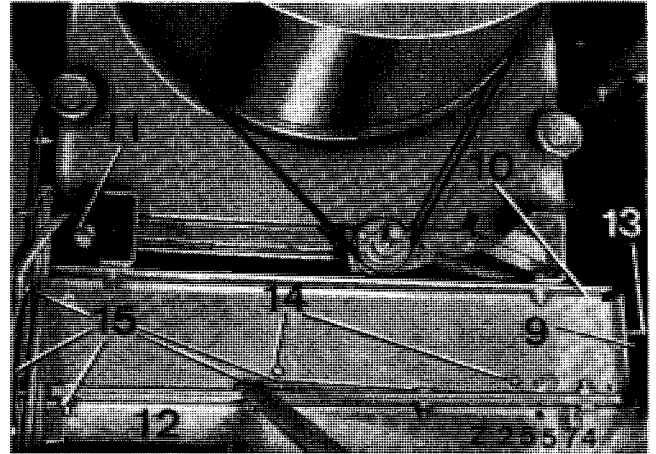


Fig. 25 — Removing Right-Hand Engine Mounting Bracket

- 9 Clamp
- 10 Engine mounting bracket
- 11 Wiring harness plug
- 12 Brace
- 13 Hydraulic line (combines with Posi-Torq cylinder drive only)
- 14 Cap screws
- 15 Attaching screws

Attach lifting eyes to engine as shown in fig. 26 (see Special Tools).

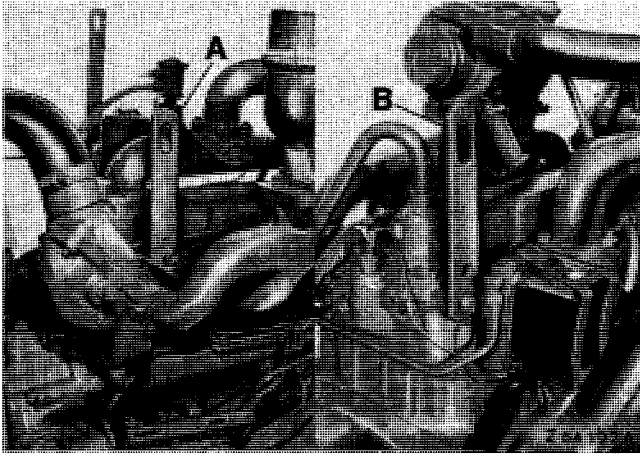


Fig. 26 – Attaching Lifting Eyes

- A Lifting eye JD 244-2
- B Lifting eye JD 244-1

By means of a suitable hoist lift up complete engine approx. 200 mm (8 in.) and slide to the right out of combine.



**CAUTION!** Be careful when lowering engine to the ground. Danger of accidents!

## Installation

When installing engine, reverse removal procedure.

With engine installed and attaching cap screws 15 (fig. 25) tightened, check all drive belts for proper adjustment, true running and tension (especially power band, see section 120 for details).

Check the following:

- Engine oil level
- Hydraulic oil level
- Coolant level

Bleed the fuel system (see operator's manual) and make at test run of the engine.

While engine is running bleed the hydraulic system by operating all hydraulic control levers (operate until free of air). Then with hydraulic cylinders retracted again check level of hydraulic oil. If necessary, top up system to correct level with oil of specific quality and viscosity (see operator's manual).

Check control valve connections for leakage.

Having completed the engine test run check all attaching cap screws for tightness.

Check all drive belts for correct adjustment, true running and tension.

Check engine speeds and adjust, if necessary.

## Removal and Installation of Engine – Combines 985\*, 985 Hydro/4, 1085 and 1085 Hydro/4

### General Information

A hoist is required for removing engine from combine. The hoist should be high enough to lift the engine approx. 200 mm (8 in.)

*NOTE: For most service operations the engine need not be removed. Remove the engine in case of major engine overhaul or for repairs to the crankshaft.*

Always remove the engine from right-hand side of combine.

### Removal

*NOTE: When removing engine, it is not necessary to mark position of engine carrier to combine frame.*

Carry out the following preparatory work to remove engine:

**IMPORTANT! Lower feeder conveyor to the ground (hydraulic system now pressure-free).**

Disconnect ground (-) and positive (+) cable at battery.

### WORK ON LEFT-HAND SIDE OF COMBINE

Remove lower side panel.

Remove beater drive belt guard.

Slacken transmission drive belt 1 (fig. 28) at tensioner 2.

Remove power band guide 3.

Remove clamps of engine breather tube 4 and pull out tube from O-ring guide (left-hand engine mounting frame).

Remove cotter pin and pin 5 from connecting plates 8 between both arms of cutting platform throw-out device.

Remove cotter pins (B) and (D) (fig. 27). Remove arm (C) to the left, at the same time disconnecting link (A) from arm.

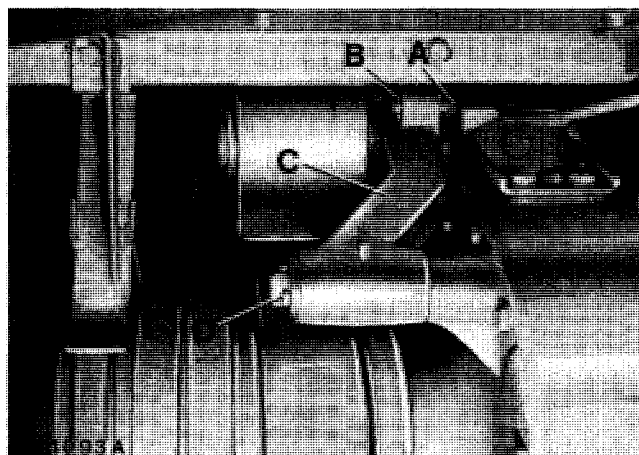


Fig. 27 – Removing Cutting Platform Throw-Out Device

- A Link
- B Cotter pin
- C Arm
- D Cotter pin

*NOTE: Do not disconnect link (A) at lifting plate.*

Remove power band guide bracket 6 (fig. 28) from left-hand engine mounting bracket 7.

Loosen clamps of hydraulic lines and battery cables at left-hand engine mounting bracket.

Disconnect all belts from engine drive pulley.

\* From Serial No. 018433

**CAUTION!** Secure Posi Torq upper unit properly to prevent it from falling to the ground.

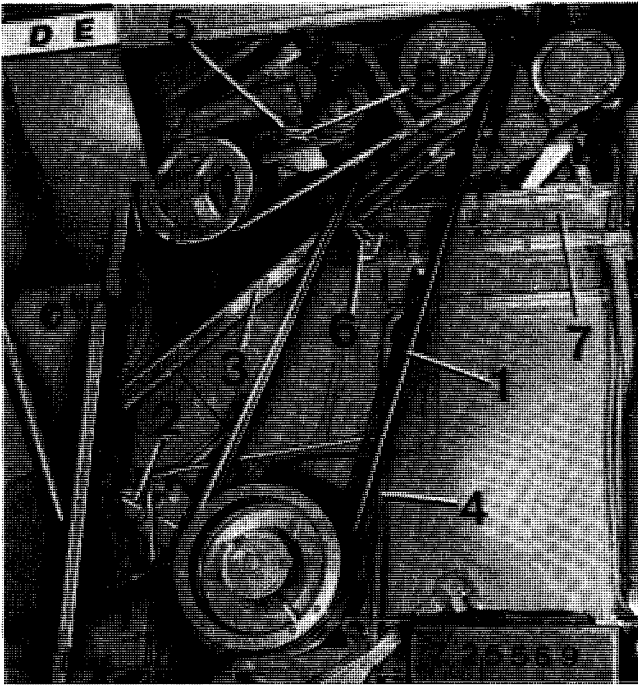


Fig. 28 – Preparing to Remove Engine

- 1 Transmission drive belt
- 2 Tensioner
- 3 Power band guide
- 4 Engine breather tube
- 5 Pin
- 6 Bracket
- 7 Engine mounting bracket
- 8 Connecting plates

On combines with hydrostatic drive, additionally carry out the following: Remove drive belt 8 (fig. 29) of hydrostatic drive variable pump after shifting tensioner pulley 9 by means of tensioner 10. Disconnect the two oil hoses from lines at points 11 and 12.

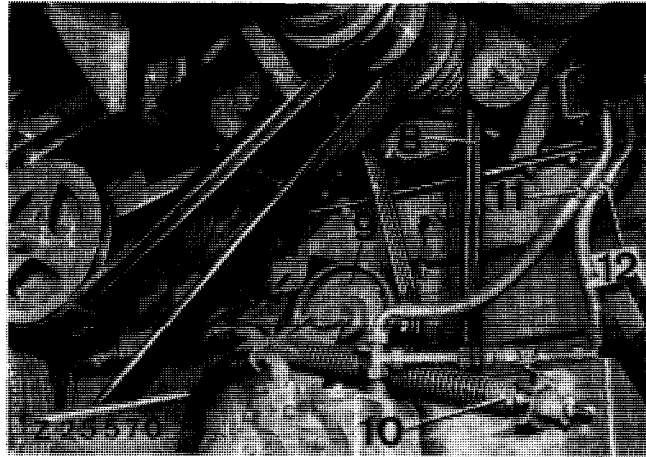


Fig. 29 – Preparing to Remove Engine (Combine with Hydrostatic Drive)

- 8 Drive belt
- 9 Tensioner pulley
- 10 Tensioner
- 11 Disconnecting point
- 12 Disconnecting point

Remove air intake pipe 8 (fig. 30) and muffler 9 with exhaust pipe 10.

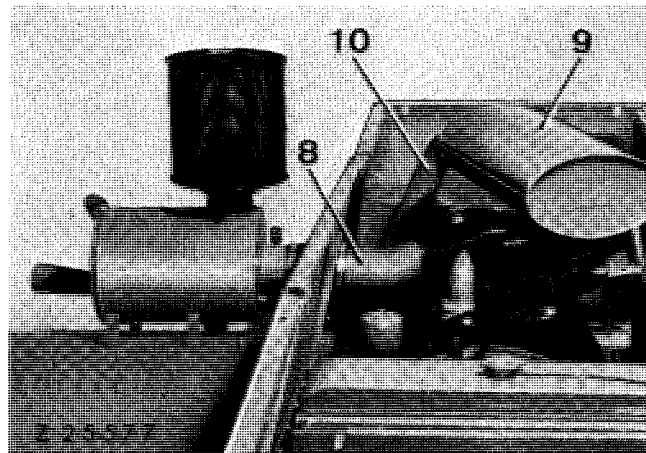


Fig. 30 – Preparing to Remove Engine (1985 Combine Shown)

- 8 Air intake pipe
- 9 Muffler
- 10 Exhaust pipe

Disconnect fuel inlet line 1 (fig. 31) at fuel transfer pump 3. Disconnect fuel return line 2 at fuel injection nozzle return line 4.

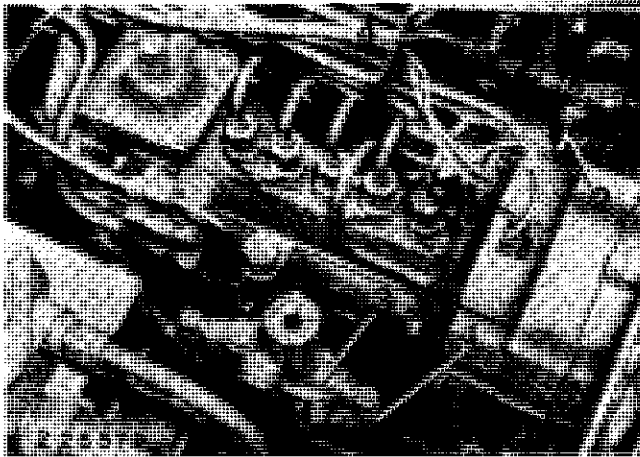


Fig. 31 — Preparing to Remove Engine

- 1 Fuel inlet line
- 2 Fuel return line
- 3 Fuel transfer pump
- 4 Fuel injection nozzle return line

Disconnect speed control cable at injection pump. Remove speed control cable bracket at engine. Disconnect shut-off cable at injection pump.

Remove bracket between hydraulic tank and rear panel of engine.

#### WORK AT GRAIN TANK REAR PANEL AREA

At control valve remove both inspection plates from rear panel of grain tank and from grain tank floor.

**IMPORTANT!** Thoroughly clean control valve area.

Remove ball joints from rocker arms 4 (fig. 32) on control valve.

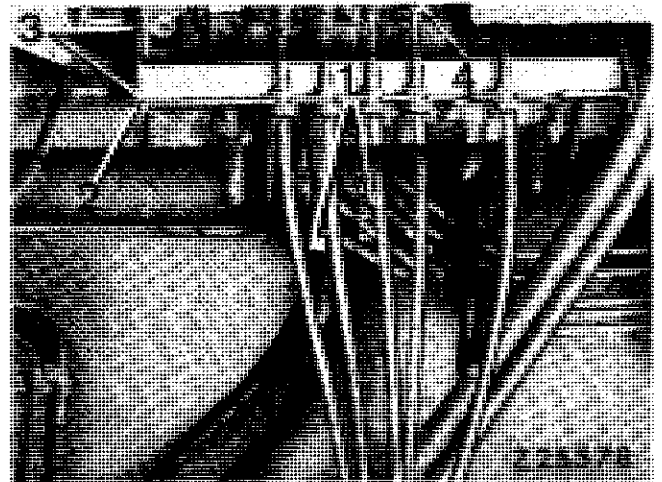


Fig. 32 — Preparing to Remove Engine at Control Valve

- 1 Hose connections
- 2 Bowden cable bracket
- 3 Cap screws
- 4 Rocker arms

Disconnect bowden cable bracket 2 (fig. 32) from control valve by removing the four cap screws 3.

Disconnect both hose connections 1 (fig. 32) leading to the steering pump. Seal openings immediately with plastic plugs.

*NOTE: Mark position of hydraulic lines to control valve before removal.*

Disconnect all hydraulic lines to control valve and seal openings immediately with plastic plugs or caps.



**Suggest:**

**If the above button click is invalid.**

**Please download this document**

**first, and then click the above link**

**to download the complete manual.**

**Thank you so much for reading**

**WORK ON RIGHT-HAND SIDE OF COMBINE**

Remove engine cover. Remove rear triangular plate from rear engine panel.

Disconnect the long hinged cover below the John Deere sign at the three hinges and remove.

Remove the four screws and lift off cover with John Deere sign.

Remove operator's seat. Disconnect plug 8 (fig. 33) after removing attaching clamp.

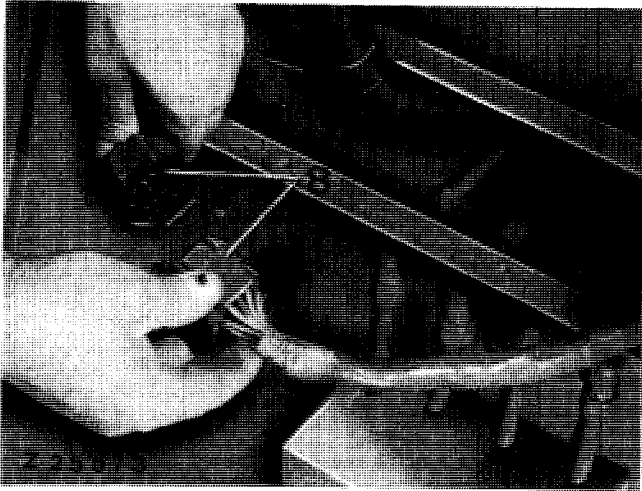


Fig. 33 — Wiring Harness Plug next to Operator's Seat (Seat Removed)

8 Wiring harness plug

Disconnect wiring harness plug 11 (fig. 34) at right-hand engine mounting bracket.

Disconnect cable to electrical fuel transfer pump at plug. Disconnect straw walker warning device cable at plug behind engine.

Loosen clamp 9 (fig. 34) attaching hydraulic line 13 of beater variable drive. Disconnect hydraulic line 13 at accumulator of variable cylinder drive. Disconnect engine floor plate at the three cap screws 14 at right and left-hand side of engine mounting bracket. Remove fuel tank brace 12 from mounting bracket.

Remove the six attaching screws 15 of right and left-hand engine mounting bracket 10.

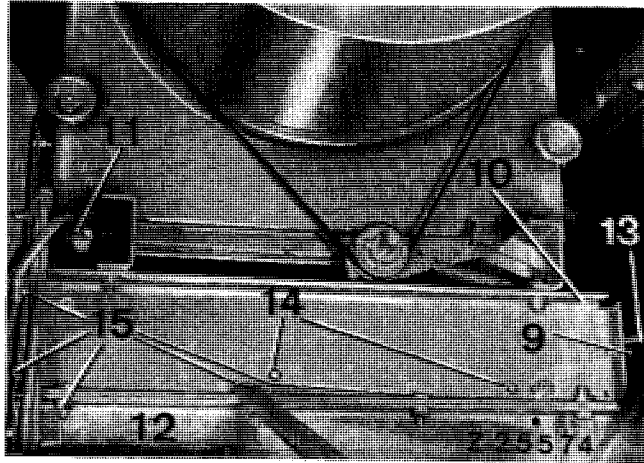


Fig. 34 — Removing Right-Hand Engine Mounting Bracket

- 9 Clamp
- 10 Engine mounting bracket
- 11 Wiring harness plug
- 12 Brace
- 13 Hydraulic line
- 14 Cap screws
- 15 Attaching screws

Attach lifting eyes to engine as shown in fig. 35 (see Special Tools).

**<https://www.ebooklibonline.com>**

Hello dear friend!

Thank you very much for reading.

Enter the link into your browser.

The full manual is available for immediate download.

**<https://www.ebooklibonline.com>**