



# JD24A Skid-Steer Loader



JOHN DEERE

## TECHNICAL MANUAL

JD24A Skid-Steer  
Loader

TM1157 (01NOV76) English

John Deere  
Lawn & Grounds Care Division  
TM1157 (01NOV76)

LITHO IN U.S.A.  
ENGLISH



## SECTION AND GROUP CONTENTS OF THIS MANUAL

### SECTION 1 - GENERAL INFORMATION

- Group I - Contents, Index and Page List
- Group II - Introduction and Safety Information
- Group III - General Specifications
- Group IV - Predelivery, Delivery and After-Sale Services
- Group V - Lubrication

### SECTION 1 - WHEELS AND TIRES

- Group 0110 - Powered Wheels, Tires, and Fastenings
- Group 0199 - Specifications and Special Tools

### SECTION 2 - AXLES

- Group 0200 - Axles
- Group 0299 - Specifications and Special Tools

### SECTION 3 - TRANSMISSION

- Group 0315 - Controls
- Group 0360 - Hydrostatic Pump and Motor
- Group 0399 - Specifications and Special Tools

### SECTION 4 - DIESEL ENGINE

- Group 0400 - Engine
- Group 0401 - Crankshaft and Main Bearings
- Group 0402 - Camshaft and Valve Actuating Means
- Group 0403 - Connecting Rods and Pistons
- Group 0404 - Cylinder Block
- Group 0407 - Engine Oiling System
- Group 0409 - Cylinder Head and Valves
- Group 0413 - Fuel Injection System
- Group 0417 - Water Pump
- Group 0418 - Thermostats, Housings and Piping
- Group 0422 - Starting System
- Group 0433 - Flywheel, Housing and Fasteners
- Group 0499 - Specifications and Special Tools

### SECTION 4A - GASOLINE ENGINE

- Group 0400A - Basic Engine
- Group 0401A - Crankshaft and Main Bearings
- Group 0402A - Camshaft and Valve Actuating Means
- Group 0403A - Connecting Rods and Pistons
- Group 0404A - Cylinder Block and Valves
- Group 0405A - Carburetor
- Group 0406A - Governor
- Group 0407A - Engine Oiling System
- Group 0422A - Starter
- Group 0499A - Specifications and Torque Values

### SECTION 5 - ENGINE AUXILIARY SYSTEMS

- Group 0505 - Starting Aids
- Group 0510 - Engine Cooling System
- Group 0520 - Intake System
- Group 0560 - External Fuel Supply System
- Group 0599 - Specifications and Special Tools

### SECTION 10 - SERVICE BRAKES

- Group 1011 - Brakes Active Elements
- Group 1015 - Controls Linkage

### SECTION 11 - PARKING EMERGENCY BRAKE

- Group 1115 - Controls Linkage

### SECTION 16 - ELECTRICAL SYSTEMS

- Group 1671 - Batteries, Supports and Cables
- Group 1672 - Alternator, Regulator and Charging System Wiring
- Group 1673 - Lighting System
- Group 1699 - Specifications and Special Tools

### SECTION 18 - OPERATOR'S STATION

- Group 1810 - Operator Enclosure
- Group 1821 - Seat
- Group 1823 - Instruments and Indicators
- Group 1824 - External Engine Speed Control
- Group 1899 - Specifications and Special Tools

### SECTION 21 - HYDRAULIC SYSTEM

- Group 2161 - Hydraulic Pump
- Group 2162 - Control Valve
- Group 2165 - Hydraulic Cylinders
- Group 2199 - Specifications and Torque Valves

### SECTION 90 - SYSTEM TESTING

- Group 9005 - General Information - Seven Basic Steps of Testing and Diagnosis
- Group 9010 - Engine
- Group 9015 - Electrical System
- Group 9020 - Power Train
- Group 9025 - Hydraulic System

## ALPHABETICAL INDEX

A	Page	H	Page
After-Sales Inspection .....	I-IV-8	Hour Meter .....	1823-1
Air Cleaner .....	0520-1	Hydraulic System .....	2100-1
Air Restriction Indicator .....	1823-2	Hydraulic Pump .....	2161-1
Alternator .....	1672-1	Hydrostatic Motor .....	0300-1
Axle .....	0200-1	Hydrostatic Pump .....	0300-1
		Hydrostatic System .....	0300-1
B		I	
Battery .....	1671-1	Injection, Fuel (Diesel) .....	0413-1
Block, Engine (Diesel) .....	0404-1	Instrument Panel .....	1810-6
Block, Engine (Gasoline) .....	0404A-1	Instruments .....	1823-1
Brakes, Emergency .....	1100-1	Intake, Engine .....	0520-1
Brakes, Service .....	1000-1		
C		K	
Cooling System .....	0505-1	Key Switch .....	1823-3
Camshaft (Diesel) .....	0402-1		
Camshaft (Gasoline) .....	0402A-1	L	
Charging System .....	1672-1	Lift Arm Locks .....	1810-1
Connecting Rods (Diesel) .....	0403-1	Lighting System .....	1673-1
Connecting Rods (Gasoline) .....	0403A-1	Lock, Lift Arm .....	1810-1
Control, Speed .....	1824-1	Lubricants .....	I-V-2
Control Valves .....	2162-1	Lubrication .....	I-V-1
Controls, Hydrostatic .....	0300-1		
Crankshaft (Diesel) .....	0401-1	M	
Crankshaft (Gasoline) .....	0401A-1	Main Bearings (Diesel) .....	0401-1
Cylinder Block, Engine (Diesel) .....	0404-1	Main Bearings (Gasoline) .....	0401A-1
Cylinder Block, Engine (Gasoline) .....	0404A-1	Malfunctions, Diagnosing .....	9000-1
Cylinder Head (Diesel) .....	0409-1	Motor, Hydrostatic .....	0300-1
Cylinder Head (Gasoline) .....	0409A-1		
Cylinders, Hydraulic .....	2165-1	N	
		Neutral Start Switches .....	9020-7
D		O	
Defroster .....	1810-5	Oil Gauge .....	1823-2
Delivery Service .....	I-IV-8	Oiling System, Engine (Diesel) .....	0407-1
Diagnosing Malfunctions .....	9000-1	Oiling System, Engine (Gasoline) .....	0407A-1
E		P	
Electrical System .....	1600-1	Panel, Instrument .....	1810-6
Engine (Diesel) .....	0400-1	Piston, Engine (Diesel) .....	0403-1
Engine (Gasoline) .....	0400A-1	Piston, Engine (Gasoline) .....	0403A-1
Engine Specifications .....	I-III-1	Pre-delivery Service .....	I-IV-1
F		Pump, Hydraulic .....	2161-1
Fan .....	1810-5	Pump, Hydrostatic .....	0300-1
Fuel Gauge .....	1823-4	Pump Linkage .....	0368-4
Fuel Injection (Diesel) .....	0413-1	Pump, Water .....	0417-1
Flywheel (Diesel) .....	0433-1		
Fuel Tanks .....	0560-1	G	
		Gauges .....	1823-1
		Glow Plug Indicator (Diesel) .....	1823-3

**<https://www.ebooklibonline.com>**

Hello dear friend!

Thank you very much for reading.

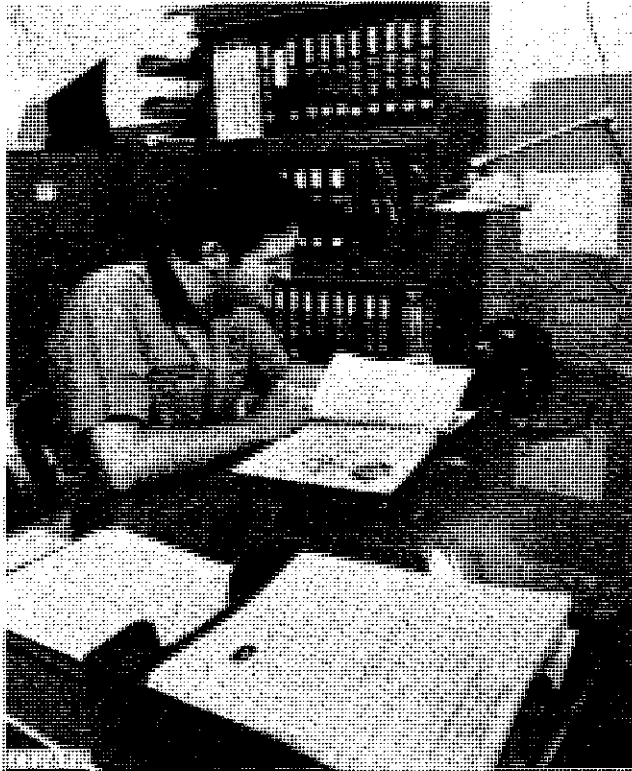
Enter the link into your browser.

The full manual is available for immediate download.

**<https://www.ebooklibonline.com>**

	Page		Page
<b>R</b>		<b>T</b>	
Regulator .....	1672-1	T-Bar .....	0368-4
Rollover Guard .....	1810-2	Temperature Gauge .....	1823-4
ROPS .....	1810-2	Testing Systems .....	9005-1
<b>S</b>		Thermostat (Diesel) .....	0418-1
Solenoid (Diesel) .....	0422-1	Timing Engine (Diesel) .....	0409-3
Solenoid (Gasoline) .....	0422A-1	Timing Engine (Gasoline) .....	0499A-1
Specifications		<b>V</b>	
General .....	I-III-2	Vacuum Gauge .....	1823-3
Axle .....	0299-1	Valve, Control .....	2162-1
Electrical .....	1699-1	Valves, Engine (Diesel) .....	0409-1
Engine (Diesel) .....	0499-1	Valves, Engine (Gasoline) .....	0404A-1
Engine (Gasoline) .....	0499A-1	<b>W</b>	
Hydraulic .....	2199-1	Water Pump (Diesel) .....	0417-1
Hydrostatic .....	0399-1	Wheels .....	0100-1
Speed Control .....	1824-1	Windshield Wiper .....	1810-5
Starter (Diesel) .....	0422-1	Wiper, Windshield .....	1810-5
Starter (Gasoline) .....	0422A-1		
Starting Aid .....	0505-3		
Storage .....	I-IV-1		
System Test .....	9000-1		

## Group II INTRODUCTION AND SAFETY INFORMATION INTRODUCTION



Use FOS Manuals for Reference

This technical manual is part of a twin concept of service:

The two kinds of manuals work as a team to give you both the general background and technical details of shop service.

### •FOS Manuals - for reference

Fundamentals of Service (FOS) Manuals cover basic theory of operation, fundamentals of trouble shooting, general maintenance, and basic types of failure and their causes. FOS Manuals are for training new personnel and for reference by experienced service technicians.



When a service technician should refer to a FOS Manual for more information, a FOS symbol like the one at the left is used in the TM to identify the reference.

### •Technical Manuals - for actual service

Technical Manuals are concise service guides for a specific machine. Technical manuals are on-the-job guides containing only the vital information needed by an experienced service technician.



Use Technical Manuals for Actual Service

This technical manual was planned and written for you - an experienced service technician. Keep it in a permanent binder in the shop where it is handy. Refer to it whenever in doubt about correct service procedures or specifications.


Some features of this manual:

- Inside front cover - "Table of Contents".
- Section I - General specifications and services.
- Sections 1 through 21 - Removal, repair, testing (components removed), installation, and adjustment.
- Section 90 - Detailed explanation of system operation, diagnosis, visual inspection, testing, and adjustments.
- Specifications grouped and illustrated at the end of each section.

## MAINTENANCE WITHOUT ACCIDENT WORK SAFELY



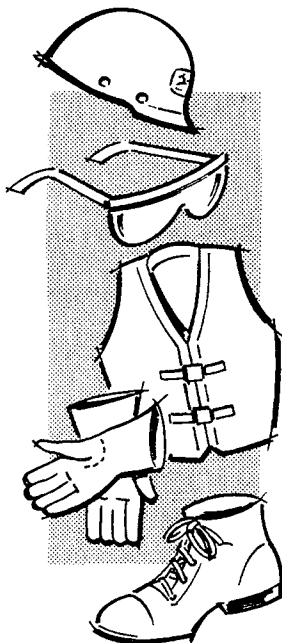
T27999

 This safety alert symbol identifies important safety messages in this manual and on the skid-steer loader. When you see this symbol, be alert to the possibility of personal injury and carefully read the message that follows.

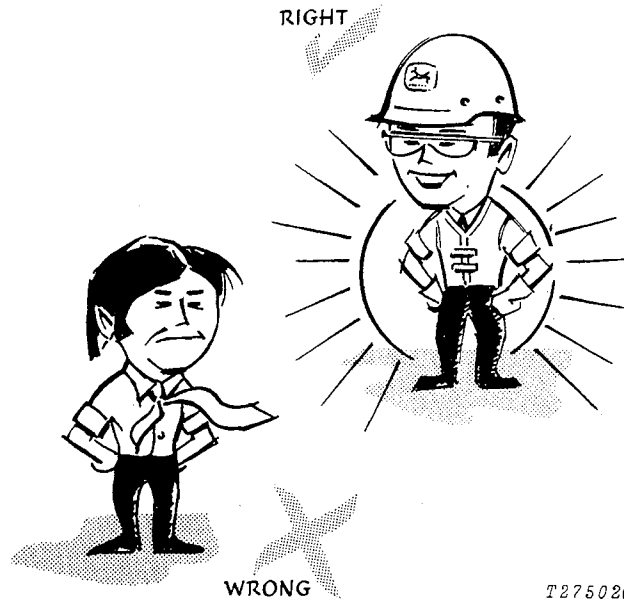
### EVERY EMPLOYER HAS A SAFETY PROGRAM. KNOW WHAT IT IS!

Consult your shop foreman for specific instructions on a job, and the safety equipment required.

For instance, you may need: Hard hat, safety shoes, safety goggles, heavy gloves, reflector vests, ear protectors, respirators.



T27501

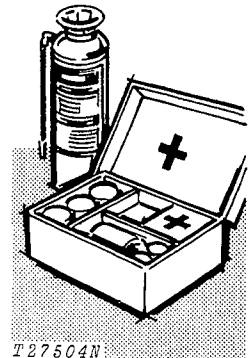


T27502

**ALWAYS AVOID** loose clothing or any accessory - flopping cuffs, dangling neckties and scarves, or rings and wrist watches - that can catch in moving parts and put you out of work.

### BE ALERT!

Plan ahead - work safely - avoid accidental damage and injury. If a careless moment does cause an accident or fire, react quickly with the tools and skills at hand—know how to use a first-aid kit and a fire extinguisher—and where to get aid and assistance. In an emergency, split-second action is the key to safety.



T27504N

## MAINTENANCE WITHOUT ACCIDENT

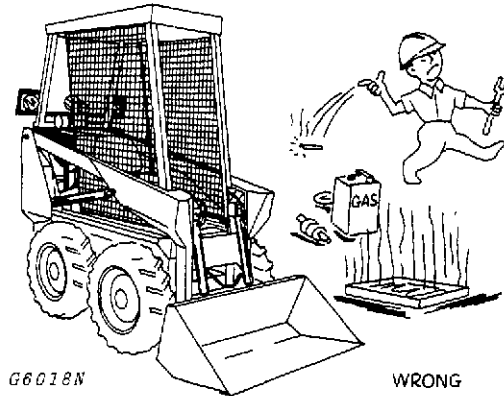
Specific safety procedures should always be observed, whether servicing the equipment or making the repairs. Remembering these - in time! - can prevent an injury... or save your life...

### AVOID FIRE HAZARDS—

#### Fuel is Dangerous!

Don't smoke while refueling.  
Don't smoke while handling highly flammable material.

Engine should be shut off when refueling.  
Use care in refueling if the engine is hot.  
Don't use open pans of gasoline or diesel fuel for cleaning parts. Good commercial, nonflammable solvents are preferred.



#### Battery Gas is Highly Flammable!

Provide adequate ventilation when charging batteries.

Don't check battery charge by placing metal objects across the posts.

#### KNOW WHERE FIRE EXTINGUISHERS ARE KEPT!



Don't allow sparks or open flame near batteries.  
Don't smoke near battery.

#### Flame is Not a Flashlight!

Never check fuel, battery electrolyte or coolant levels with an open flame.

Never use an open flame to look for leaks anywhere on the equipment.

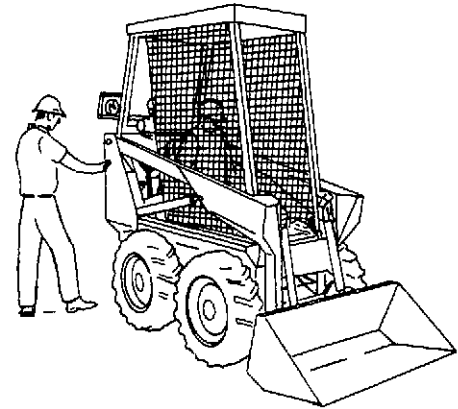
Never use an open flame as a light anywhere on or around the equipment.

Litho in U.S.A.

### UNDER ALL MAINTENANCE CONDITIONS -

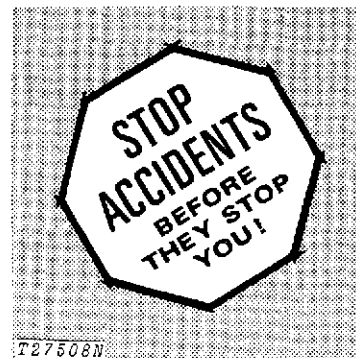
Do not perform any work on the equipment unless authorized to do so. Then be sure you know what you're doing. Follow recommended procedures.

Never service the equipment while it is being operated.



### SERVICE TECHNICIANS

Avoid working on equipment with the engine running. If it is necessary to make checks with the engine running, **ALWAYS USE TWO** - one, the operator, at the controls, the other checking in view of the operator. **KEEP HANDS AWAY FROM MOVING PARTS.**



## MAINTENANCE WITHOUT ACCIDENT

Before servicing, adjusting or repairing Skid-Steer Loader - LOWER bucket to the ground - or, if necessary raise bucket for access to certain parts. **SECURELY SUPPORT** by using lift arm locks. **DO NOT** rely on controls to support or position bucket for maintenance.

Never allow ANYONE to walk under equipment that is raised and not properly blocked.

Avoid working directly under raised and blocked equipment unless absolutely necessary.

If the machine is on an incline, block it securely.

Use hoisting equipment for lifting heavy parts. **TAKE CARE! WATCH OUT FOR OTHER PEOPLE IN THE VICINITY.**

Use extreme caution in removing radiator caps, drain plugs, grease fittings, or hydraulic pressure caps.

Wear safety glasses when drilling, grinding, or hammering metal.

Make sure the maintenance area is adequately vented.

Keep maintenance area **CLEAN AND DRY**. Oily and wet floors are slippery; greasy rags are a fire hazard; wet spots are dangerous when working with electrical equipment.

### SERVICING PRECAUTIONS

Stop the engine before cleaning or lubricating the equipment.

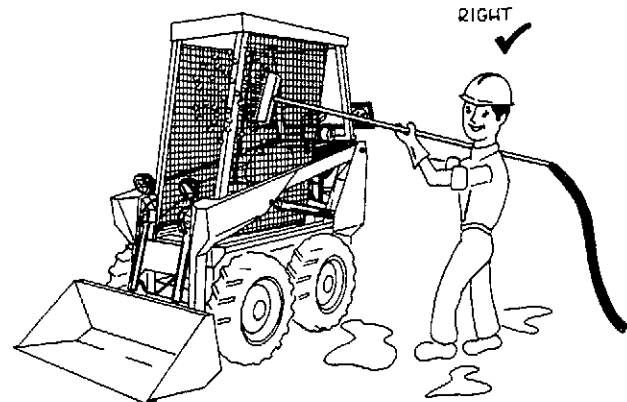
Lower mounted equipment and tools to the ground carefully.

Engine coolant gets hot! Don't remove the radiator cap until coolant temperature is below the boiling point. Then turn cap slightly to relieve pressure before removing.

Exhaust gases are dangerous! Periodically check exhaust system for excessive leakage.

Don't forget a hydraulic system may be pressurized! To relieve pressure, follow the technical manual.

When checking hydraulic pressure, be sure to use the correct test gauge for the pressure in the particular system.



Keep the operator's platform clean. Do not use it as a storage area.

Keep the engine closure screens free of foreign matter. Avoid a possible fire hazard.

Keep all equipment free of dirt and oil. In freezing weather, beware of snow and ice on operator's platform.

## MAINTENANCE WITHOUT ACCIDENT

### ADJUSTING PRECAUTIONS

#### *... for Operating Adjustments*

Keep controls properly adjusted at all times. Before making adjustments, stop engine.

Before removing any covers, stop engine. Take all objects from your pockets which could fall. Don't let adjusting wrenches fall.

#### *... for Maintenance Adjustments*

Don't attempt to check belt tension while the engine is running.

Don't adjust the fuel system while the machine is in motion.

### PRECAUTIONS DURING REPAIR

Before working on hydraulic system—make sure engine is not running and the system pressure is relieved by working the control levers in all directions with the engine shut off.

Before repairing the electrical system, or performing a major overhaul, make sure the battery is disconnected.

### KNOW EQUIPMENT IS READY!

Check guards, safety equipment, and all protective devices installed on the skid steer. Each one should be in place and secure.

Check levels of fuel, coolant, hydraulic fluid, and lubricating oil. If fuel must be added - **FIRST, PUT OUT THAT CIGARETTE.**

Although it is impractical to try to cover every possible maintenance situation, the safety precautions recommended here should serve to develop and promote safe maintenance procedures.

The information contained in this manual is not intended to replace safety codes, insurance requirements, federal, state, and local laws, rules and regulations. In particular, your service area or jobsite activities may be subject to state safety rules and/or federal regulation under the Occupational Safety and Health Act (OSHA). Familiarize yourself with all regulations applicable to your situation in order to avoid possible safety violations.

## Group III

# GENERAL SPECIFICATIONS

*(Specifications and design subject to change without notice. Wherever applicable, specifications are in accordance with IEMC and SAE standards. Except where otherwise noted, these specifications are based on a unit equipped with 10 x 16.5, 4 ply rating steel-ply tires and standard equipment.)*

POWER	SAE
((@ 2800 Engine rpm)	
Gross .....	37
Net .....	35

Net engine flywheel power is for an engine equipped with fan, air cleaner, water pump, lubricating oil pump, fuel injection pump, alternator and muffler. The gross engine power is without fan. Gross and net flywheel power ratings are under SAE standard conditions of 500-ft (152 m) altitude and 85°F (29.5°C) temperature and DIN 70 020 conditions (non-corrected). No derating is required up to 10,000 feet (3000 m) altitude.

\*\*In the international system of units power is expressed in kilowatts (kW).

### ISUZU ENGINE

Diesel, 4-Cylinder, 4-stroke cycle	
Bore and Stroke .....	3.37 x 3.31 in. (86 x 84 mm)
Piston Displacement .....	119 cu. in. (1951 cc)
Compression Ratio .....	20.1 to 1
Maximum Torque ((@ 2000 RPM	79.6 lb-ft (107.9 Nm)
MACC or AMA (U. S. Tax)-horsepower .....	18.34
Cooling .....	Pressurized with Single Thermostat and Control By Pass
Fan .....	Blower
Air Cleaner with Restriction Indicator .....	Dry

### CONTINENTAL ENGINE

Gasoline - 4 Cylinder	
Bore and Stroke .....	3.188 x 3.50 (81 x 89 mm)
Piston Displacement .....	112 Cu. In. (1836 cm <sup>3</sup> )
Compression Ratio .....	6.0761
Maximum Torque ((@1500 RPM	90 lb-ft (122 Nm) (12.2 kgm)

TRAVEL SPEED - (2800 Engine rpm no Tire Slip)	
Forward or Reverse .....	0 to 6.5 mph (0 to 10.5 km/hr)

### DRIVE AXLES

Axles are specially treated, forged 2.56 in (65 mm) diameter steel. Chain and sprocket primary and final drive.

### BRAKES

Service .....	Dry Disc Type on Two Front Wheels
Emergency .....	Foot Operated Mechanical
Parking .....	Hand Operated Center Pull Mechanical

### STEERING

T-Bar controls forward and reverse, right and left movements through two axial variable piston pumps and two axial fixed piston motors.  
 Turning Radius .....

360 Degrees in	its own length
----------------	----------------

### HYDRAULIC SYSTEM

Open center, constant flow hydrostatic pump driven from crankshaft - 15 gpm (60.51 lpm) 2000 psi (140.6 kg/cm<sup>2</sup>) at 2800 engine rpm.

### TIRES

- 10 x 16.5, 4 ply rating, steel cap
- 15.5 x 15, 8 ply rating, terra
- 6.50 x 16, solid rubber
- 7 x 15, 6 ply rating, steel cap

### CAPACITIES

	U.S.	Liter
Fuel Tank .....	24 Gal.	90.8 l
Cooling System .....	12 Qts.	11.3 l
Engine Lubrication with Filter	5-1/4 Qts.	4.9 l
Hydraulic System .....	18 Gal.	68.1 l

### ELECTRICAL SYSTEM:

12-Volt totally enclosed alternator, belt-driven

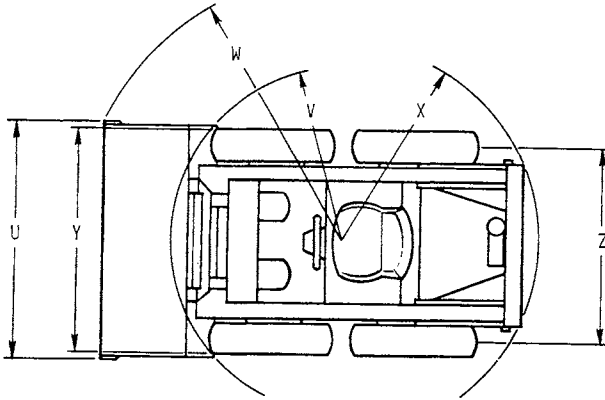
Battery 12-volt (Diesel) .....	(95 amp-hr.)
(Gas) .....	(61 amp-hr.)



G9528

Specifications are in accordance with IEMC standards. Dimensions are with the Quik-Tatch 10 cu. ft. heaped (0.28 m<sup>3</sup>) Earth and Foundry Bucket and 10 x 16.5 Steel Cap Tires

A—Overall height - lift arms raised	143.25-in. (3 640 mm)
B—Height to hinge pin (Maximum)	110-in. (2 795 mm)
C—Overall height	64.5-in. (28 mm)
D—Overall length - with bucket	115.50-in. (2 935 mm)
L—Dump angle	37°
F—Dump height	84-in. (2 135 mm)
G—Reach of maximum height	16.25-in. (415 mm)
H—Reach bucket on ground	48.25-in. (1 225 mm)
I—Maximum rollback at ground	31°
J—Carry position	10-in. (255 mm)
K—Maximum rollback at carry position	32°
L—Maximum rollback - full raised	107°
M—Digging depth	0
N—Height to seat	42-in. (1 070 mm)
O—Wheel base	35-in. (89 mm)
P—Overall height with Roll-gard	84.75-in. (2 155 mm)
Q—Overall length - less bucket	85-in. (2 160 mm)
R—Ground clearance	7.50-in. (190 mm)
S—Maximum grading angle	93°
T—Angle of departure	23°



G5275

- U—Bucket width ..... 61-in. (1550 mm)
- V—Front clearance circle ..... 44-in. (1120 mm)  
(less bucket) radius
- W—Front clearance circle ..... 72.50-in. (1840 mm)  
(with bucket) radius
- X—Rear clearance circle ..... 53.25-in. (1355 mm)  
(radius)
- Y—Overall width less bucket ... 59.5-in. (1510 mm)
- Z—Tread ..... 49-in. (1.25 m)
- Operating capacity.. Operating capacity is 1250 lbs.  
(567 kg) Bucket capacities vary  
according to application.
- Shipping weight ..... 4848 lbs. (2199 kg)
- Distribution.....Rear - 65% Front - 35%

(Specifications and design subject to change without notice.)

### ADDITIONAL STANDARD EQUIPMENT

Muffler  
Transistorized Voltage Regulator  
Engine Heat Shield  
Belly Pans  
Adjustable Seat with Seat Belt  
  
Roll-Gard Canopy with Side Screens  
Radiator Guard with Rubber Latches  
Hand and Foot Brake  
Canopy Mounted Lift Arm Locks  
Quick-Tatch Mounting Frame

Gauges:  
  
Engine Oil Pressure  
Coolant Temperature  
Electric Hour Meter  
Ammeter  
Fuel  
Glow Plug Indicator  
Air Restriction Indicator  
Hydraulic Vacuum

## Group IV PREDELIVERY, DELIVERY, AND AFTER-SALE SERVICES

### TEMPORARY STORAGE

After receiving your loader from the factory and before putting the machine into temporary storage, perform the following checks:

For long term storage (over 30 days) information, consult your JD24-A Operator's Manual.

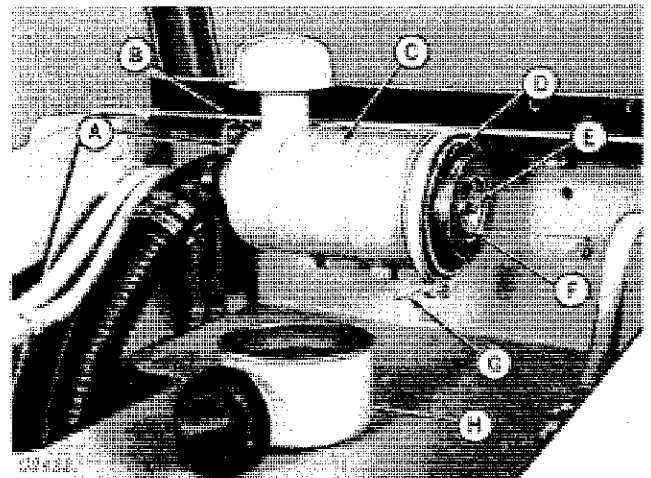
1. Check battery electrolyte level and charge the battery, if necessary.
2. Check the level of coolant in the radiator. The coolant should be maintained at a level midway between the radiator core and filler neck.
3. Fill the fuel tank.
4. Check crankcase oil level. Oil should be at top mark of dipstick after loader has been shut down for 10 minutes.
5. Relieve hydraulic pressure by stopping engine, lowering all equipment and operating control levers until system fails to respond.
6. Check torque on wheel lug nuts. Tighten nut to 90 lb-ft (118 Nm) (12 kgm) torque.

### PREDELIVERY SERVICE

Because of the shipping factors involved, plus extra finishing touches that are necessary to promote customer satisfaction, proper predelivery service is of prime importance to the dealer and the customer.

Use the following list when preparing a unit for delivery to the customer.

#### 1. Air Cleaner



- |                         |            |
|-------------------------|------------|
| A—Restriction Indicator | E—Gasket   |
| B—Reset Button          | F—Wing Nut |
| C—Air Cleaner Body      | G—Clamp    |
| D—Element               | H—Dust Cap |

Fig. 1—Air Cleaner

Check air cleaner restriction indicator. If the restriction indicator is locked in red position, check and clean air filter element. Replace element, if necessary.

## 2. Check Air Intake Hoses

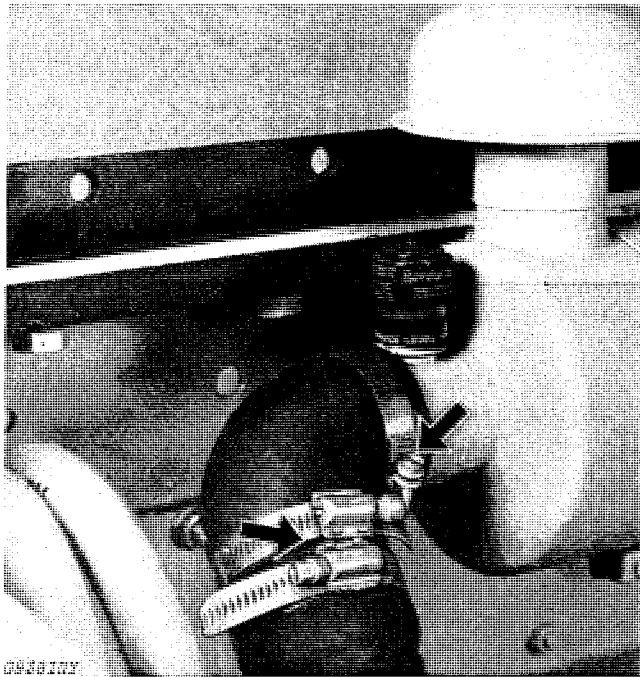


Fig. 2-Hose Clamps

Check clamps on hoses which connect air cleaner to engine. Tighten hose clamps where necessary to prevent dirt from entering engine. Inspect hoses for cracks.

## 3. Fuel Tank

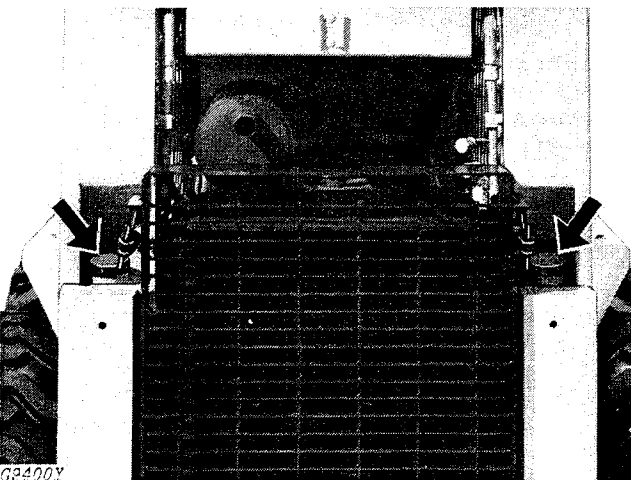


Fig. 3-Fuel Tanks

Check fuel tank level. If fuel level is low, add sufficient fuel to fill fuel tank. Fuel tank capacity is 24 U.S. Gal. (90.8 l).

## 4. Fuel Filter

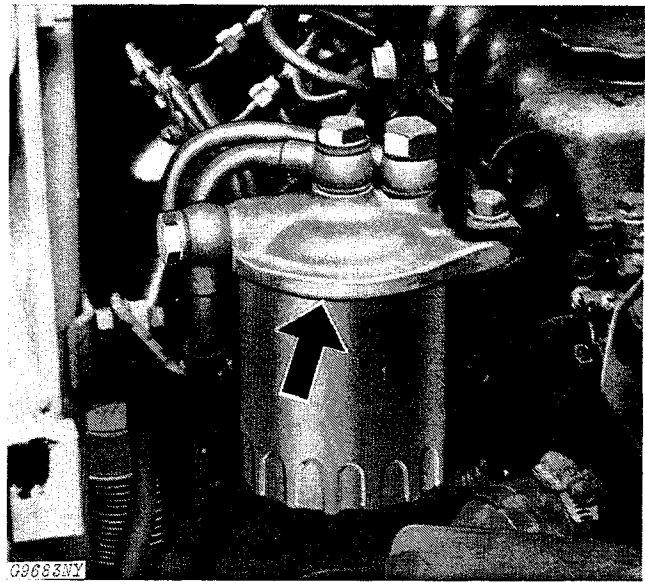
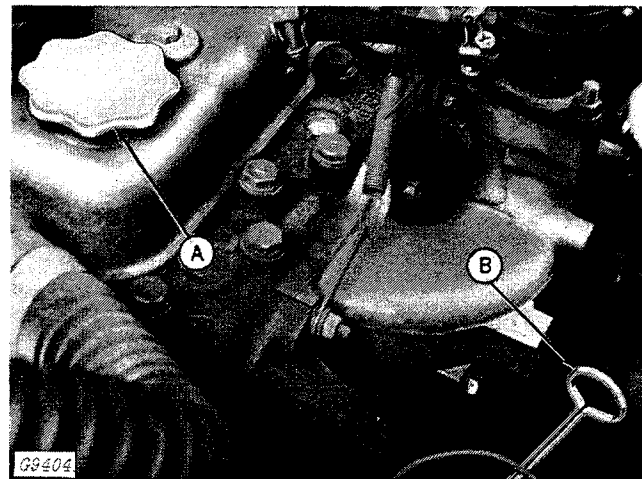


Fig. 4-Fuel Filter

Check fuel filter for loose connections.

## 5. Crankcase Oil Level



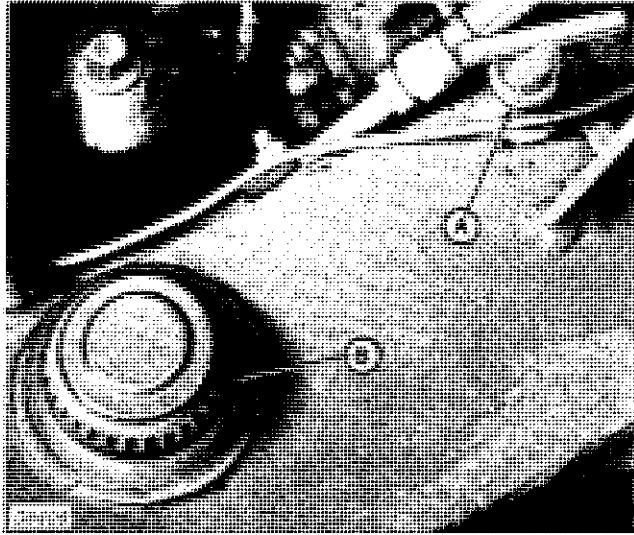
A—Crankcase Filler Cap

B—Crankcase Dipstick

Fig. 5-Crankcase Filler Cap and Dipstick

Check crankcase oil level with unit on level ground and engine off. If oil level is at or below bottom mark on dipstick, add oil specified on page I-V-2 to bring oil level to mark on dipstick. Do not operate engine with oil level below the bottom mark.

## 6. Hydraulic Reservoir Oil Level



A—Hydraulic Dipstick

B—Hydraulic Filler Cap

Fig. 6-Hydraulic Dipstick and Filler Cap

Check oil level in loader hydraulic reservoir. Level should be midway between low and high marks.

## 7. Radiator

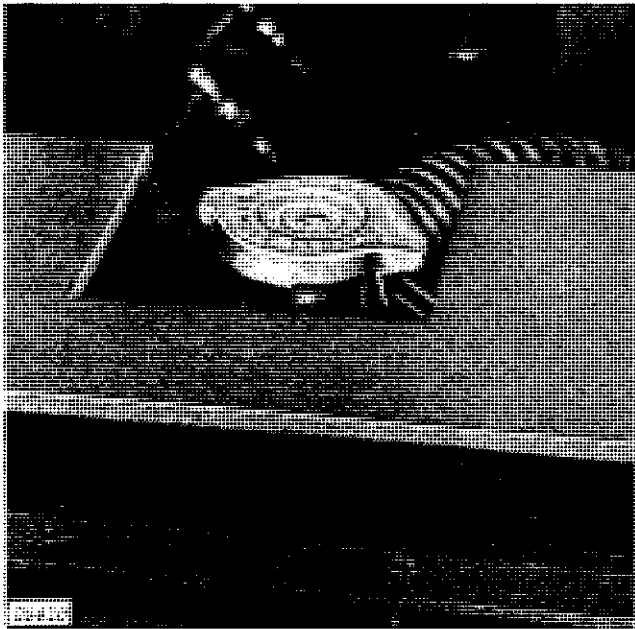
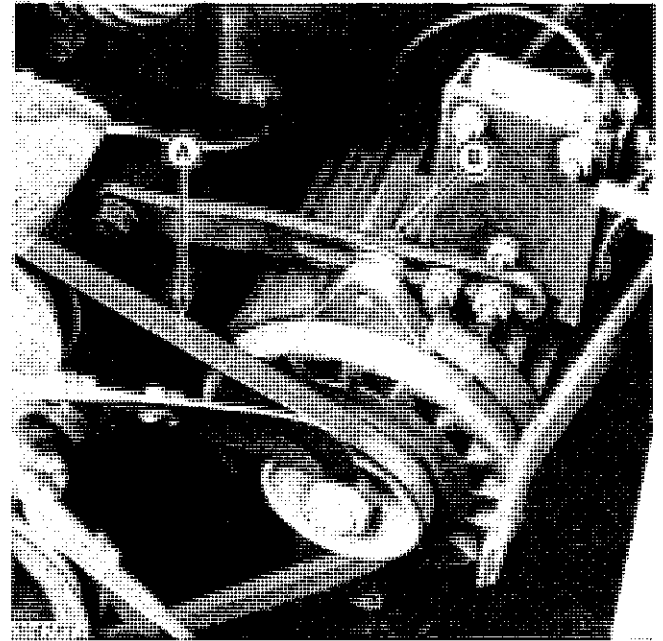


Fig. 7-Radiator Filler Cap

**⚠ CAUTION:** Do not remove radiator filler cap until the coolant temperature is below its boiling point. Then loosen cap slowly to the stop to relieve any excess pressure before removing cap completely.

Check the level of coolant in the radiator. Coolant should be maintained at a level midway between the radiator core and filler neck. Add permanent type anti-freeze if cold weather is anticipated.

## 8. Alternator Belt Tension



A—Fan Belt

B—Adjustment Screw

Fig. 8-Alternator Fan Belt

**IMPORTANT:** Do not pry on the rear alternator housing as this may damage the alternator.

The fan belt on the loader should have a 3/4-inch (19.1 mm) deflection with 20 pounds (9 kg) tension.

## 9. Battery

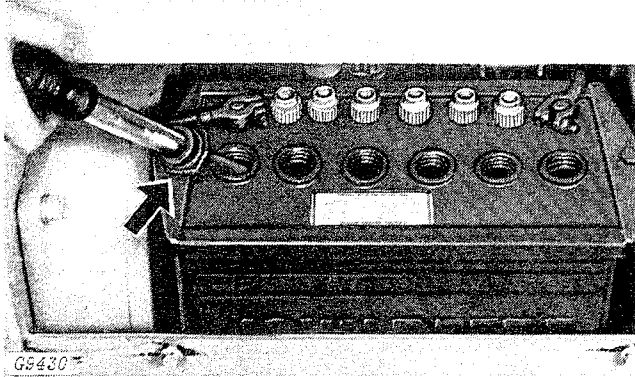
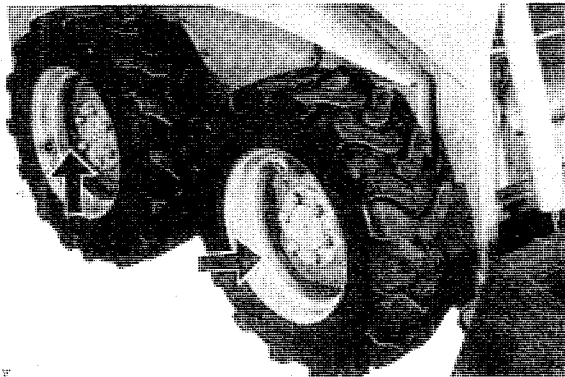


Fig. 9-Battery

Check battery electrolyte reading. If distilled water is not available, use clean soft water. Avoid use of hard water. Remove foreign material from top of battery. Tighten terminal connections and coat terminals with petroleum jelly. Clean vent holes in battery caps.

## 10. Tire Pressure



Check air pressure in tires with an accurate gauge having 1-pound (0.07 kg/cm<sup>2</sup>) graduations.

All tires must be identical in psi rating.

## 11. Wheel Lug Nuts

The wheel lug nuts must be tightened to 90 lb-ft (118 Nm) (12 kgm).

## 12. Check Seat Operation

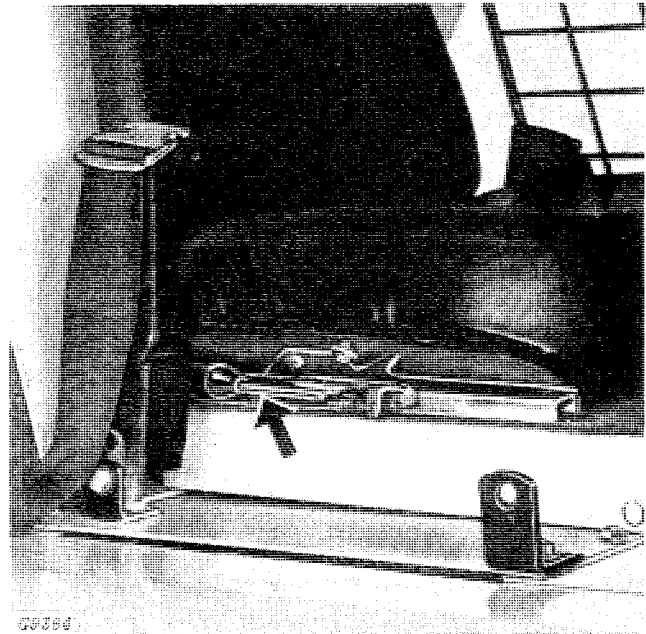


Fig. 11-Adjustment Lever

Check the distance from seat to control pedals and move seat forward or rearward for correct position.

## 13. T-Bar Lever Control

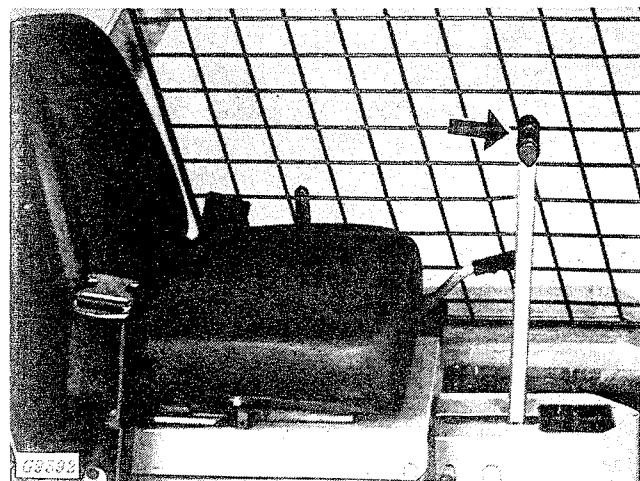
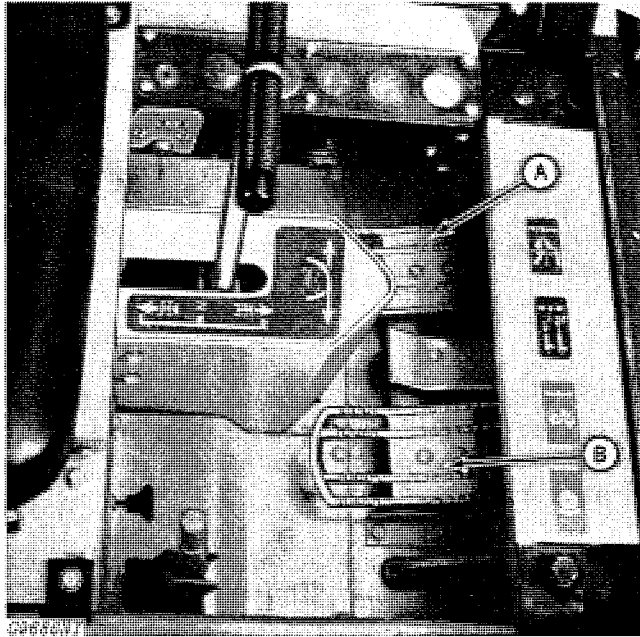


Fig. 12-T-Bar Lever

Check forward, rearward, left hand and right hand movement by moving T-bar lever controls from neutral position forward and rearward, and turning from side to side.

## 14. Check Boom and Bucket Pedal Operation



A—Boom Control Pedal

B—Bucket Control Pedal

Fig. 13-Boom and Bucket Pedals

The boom control pedal is located on the floor of the loader on the left-hand side.

To raise the boom, push down on the rear of the boom control pedal.

To lower boom push down on the front of the boom control pedal.

**NOTE:** When raising or lowering the boom, the boom control lever will always return to the neutral position when released.

To position the boom in the float position, move the control pedal all the way down on the front of the control pedal to the detent position. Pedal will remain in the float (detent) position until manually returned to neutral.

**⚠ CAUTION:** To avoid free-fall of load when lowering boom, do not fully depress boom control pedal. Carry load as low as possible. Never make sharp maneuvers with boom in raised position.

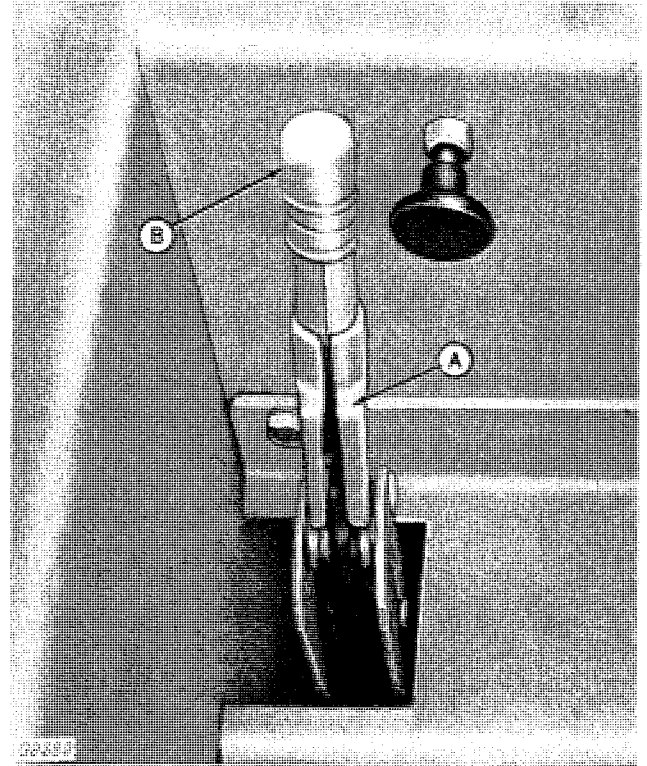
**⚠ CAUTION:** When parking, always lower the boom to the ground before dismounting.

The bucket control pedal is located on the floor of the loader on the right hand side.

To curl the bucket inward or raise the front of the forks, push down on the rear of bucket control pedal.

To dump bucket or lower front of forks, depress front of bucket control pedal.

## 15. Check Brake Operation



A—Brake Handle

B—Adjustment Knob

Fig. 15-Parking Brake

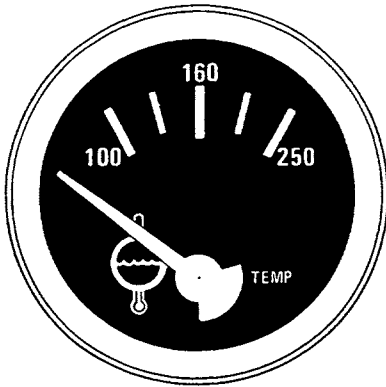
The brake handle is on the right side of the loader. Pull the brake handle rearward to set the brake.

To release the brakes, push the brake handle forward.

If the brakes are slipping, turn the adjustment knob on the brake handle counterclockwise to tighten the brake cable.

## 16. Checking Instruments and Gauges

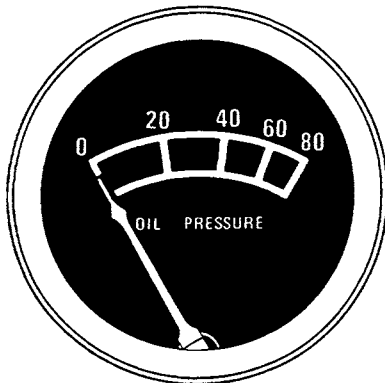
When operating the loader check the engine coolant temperature gauge, oil pressure gauge, hydraulic vacuum gauge and ammeter.



G9467

Fig. 15-Water Temperature Gauge

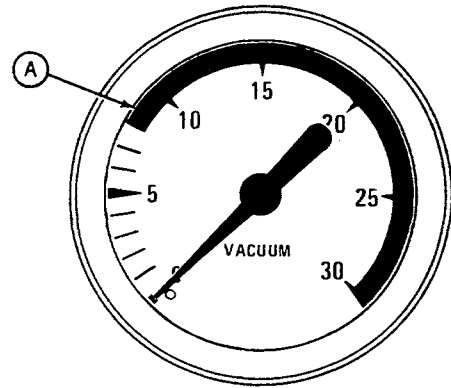
The water temperature gauge indicates the temperature of engine water coolant. The average temperature should be 170°F.



G9531

Fig. 16-Oil Pressure Gauge

The oil pressure gauge gives the oil pressure of the engine. When the engine is thoroughly warmed, the oil pressure should be 65-80 psi (4-5 bar) (5-6 kg/cm<sup>2</sup>) at 2800 rpm on the diesel, and 30-40 psi (2-3 bar) (2-3 kg/cm<sup>2</sup>) at 2950 rpm for gasoline.



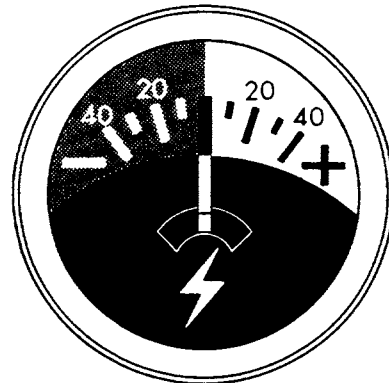
G9589

Fig. 17-Hydraulic Vacuum Gauge

The hydraulic vacuum gauge measures the hydraulic oil in inches of mercury. If the needle of the gauge is in the red zone after 30 to 45 minutes of operation, change the hydraulic oil filters.

**IMPORTANT:** Filters are to be changed every 100 hours of operation. This gauge is for added protection. If the filters are not changed, recirculation of foreign material in the system will cause damage to the pump, valves, and cylinders.

*NOTE:* Both filters must be changed.



G9451

Fig. 18-Ammeter

If the ammeter needle is pointing straight up or in the "plus" area, the alternator is charging.

If the needle goes into the "minus" area with the engine operating, stop the engine and determine the cause.

## LUBRICATION

All grease fittings were properly lubricated and checked before the loader left the factory. However, to insure proper customer satisfaction, check each fitting shown in the following pages and lubricate it, if necessary, with John Deere Multi-Purpose Lubricant or an equivalent.

### 1. Lift Arm and Cylinder Lubrication

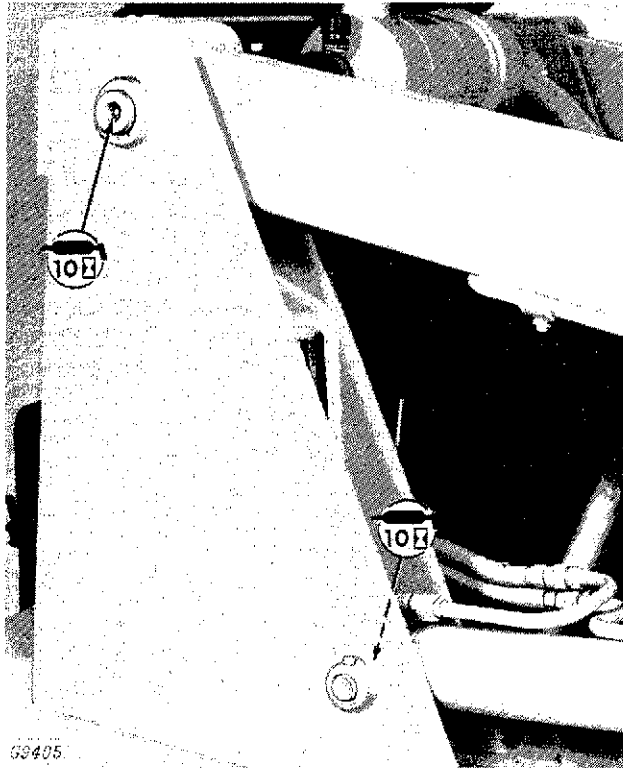


Fig. 19-Lift Arm Lubrication

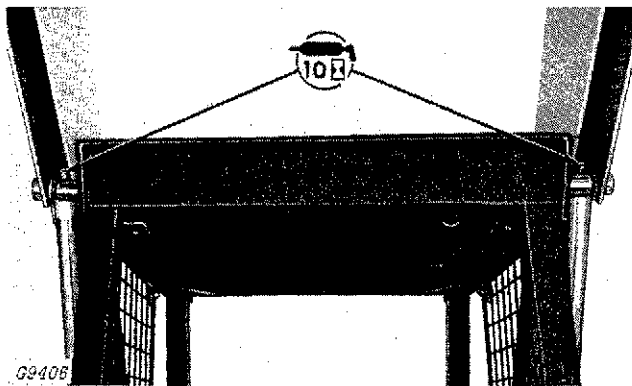


Fig. 20-Cylinder Pivot Points

Lubricate pivot points and lift arm cylinder grease fittings every 10 hours of operation with two strokes of grease gun containing John Deere Multi-Purpose Lubricant or an equivalent.

### 2. Tilt Cylinder and Pivot Points

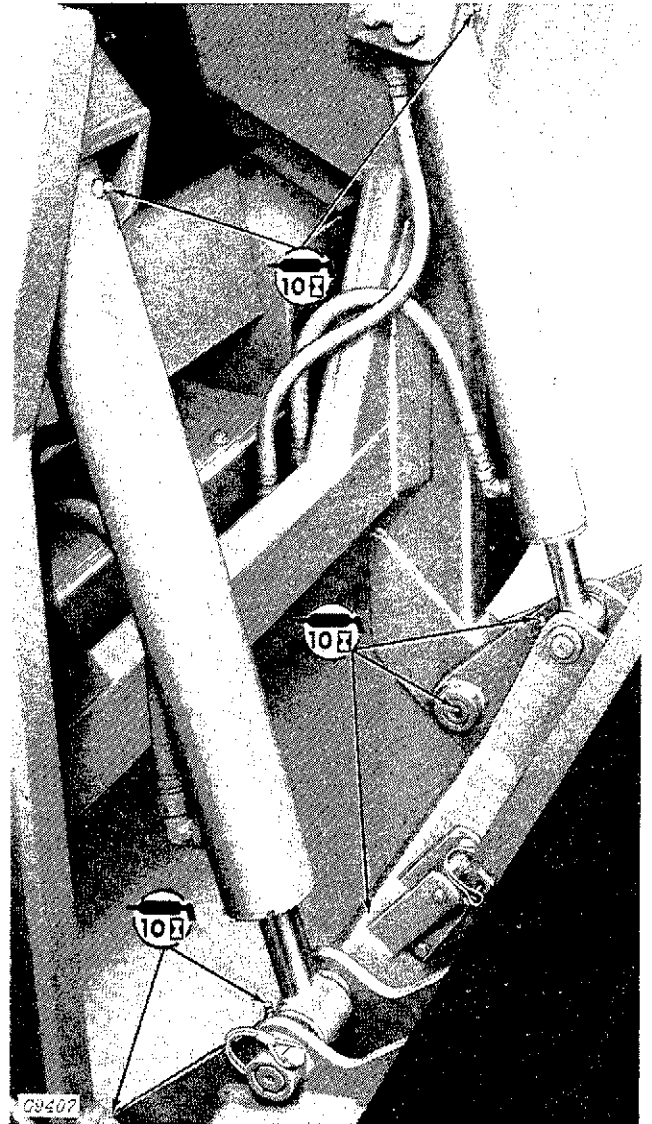


Fig. 21-Tilt Cylinder and Pivot Points

Lubricate pivot points and tilt cylinder grease fittings every 10 hours of operation with two strokes of grease gun containing John Deere Multi-Purpose Lubricant or equivalent.

### 3. Engine Chain Coupler (Diesel)

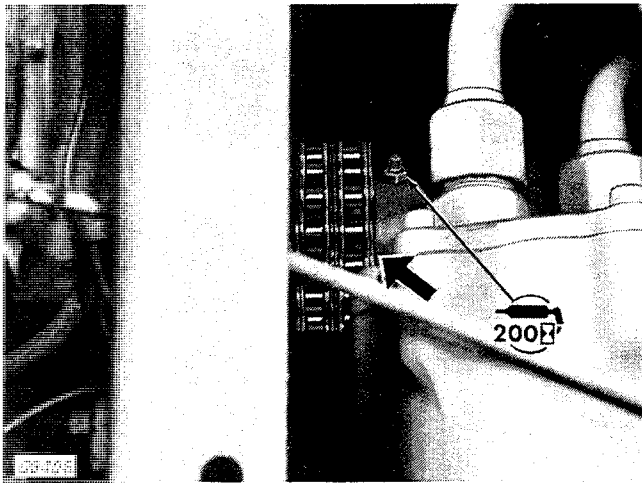


Fig. 22-Engine Chain Coupler

Lubricate engine chain coupler grease fitting every 200 hours of operation with two strokes of grease gun containing Moly Grease or equivalent.

### DELIVERY SERVICE

A thorough discussion of the operation and service of a new machine at the time of delivery helps to assure complete customer satisfaction. Proper delivery should be an important phase of a dealer's program. A portion of the John Deere Delivery Receipt emphasizes the importance of proper delivery service.

It is a well-known fact that many complaints have arisen simply because the owner was not shown how to operate and service the new machine properly. Enough time should be devoted, at the customer's convenience, to introduce the owner to the new Skid-Steer Loader and explaining how to operate and service it.

The following procedure is recommended before the technician and owner complete the delivery acknowledgements portion of the Delivery Receipt.

Using the operator's manual as a guide be sure that the owner understands these points thoroughly:

1. The importance of safety.
2. The importance of lubrication and periodic services.
3. The importance of the break-in period.
4. Controls and instruments.
5. How to start and stop the engine.
6. All functions of the hydraulic system.

After explaining and demonstrating the above features, have the owner sign the Delivery Receipt and give the owner the operator's manual.

### AFTER-SALE INSPECTION

The purchaser of a new John Deere machine is entitled to a free inspection at some mutually agreeable time within the warranty period after the equipment has been "run-in," usually at approximately 100 hours of machine operation. The terms of this after-sale inspection are outlined on the customer's John Deere Delivery Receipt.

The purpose of this inspection is to make sure that the customer is receiving satisfactory performance from the machine. At the same time, the inspection should reveal whether or not the machine is being operated, lubricated, and serviced properly.

If the recommended after-sale service inspection is followed, the dealer can eliminate a needless volume of service work by preventing minor irregularities from developing into serious problems later on. This will promote strong dealer-customer relations and present the dealer an opportunity to answer questions that may have arisen during the first few days of operation.



**Suggest:**

**If the above button click is invalid.**

**Please download this document**

**first, and then click the above link**

**to download the complete manual.**

**Thank you so much for reading**

## Group V LUBRICATION

### GENERAL INFORMATION

Illustrated below is the periodic service chart which is mounted on the loader heat shield. More detailed information on servicing the loader can be found in the current JD24-A Skid-Steer Loader Operator's Manual.

Use the operator's manual and the periodic service chart as references when servicing the loader. Remind your customer to thoroughly read the operator's manual before attempting to service or operate the loader.



Fig. 1-Lubrication Chart

**<https://www.ebooklibonline.com>**

Hello dear friend!

Thank you very much for reading.

Enter the link into your browser.

The full manual is available for immediate download.

**<https://www.ebooklibonline.com>**